

DISTRICT I  
1625 N. FRENCH DR., HOBBS, NM 88240

State of New Mexico  
Energy, Minerals and Natural Resources Department

Form C-102

Revised October 12, 2005

Submit to Appropriate District Office

State Lease - 4 Copies

Fee Lease - 3 Copies

DISTRICT II  
1301 W. GRAND AVENUE, ARTESIA, NM 88210

OIL CONSERVATION DIVISION

11885 SOUTH ST. FRANCIS DR.  
Santa Fe, New Mexico 87505

DISTRICT III  
1000 RIO BRAZOS RD., AZTEC, NM 87410

DISTRICT IV  
11885 S. ST. FRANCIS DR., SANTA FE, NM 87505

WELL LOCATION AND ACREAGE DEDICATION PLAT

☐ AMENDED REPORT

API Number 30-015-38353	Pool Code 96718	Pool Name Loco Hills; Glorieta Yeso
Property Code 302483	Property Name ELECTRA FEDERAL	Well Number 52
OGRID No. 229137	Operator Name COG OPERATING, LLC	Elevation 3712'

Surface Location

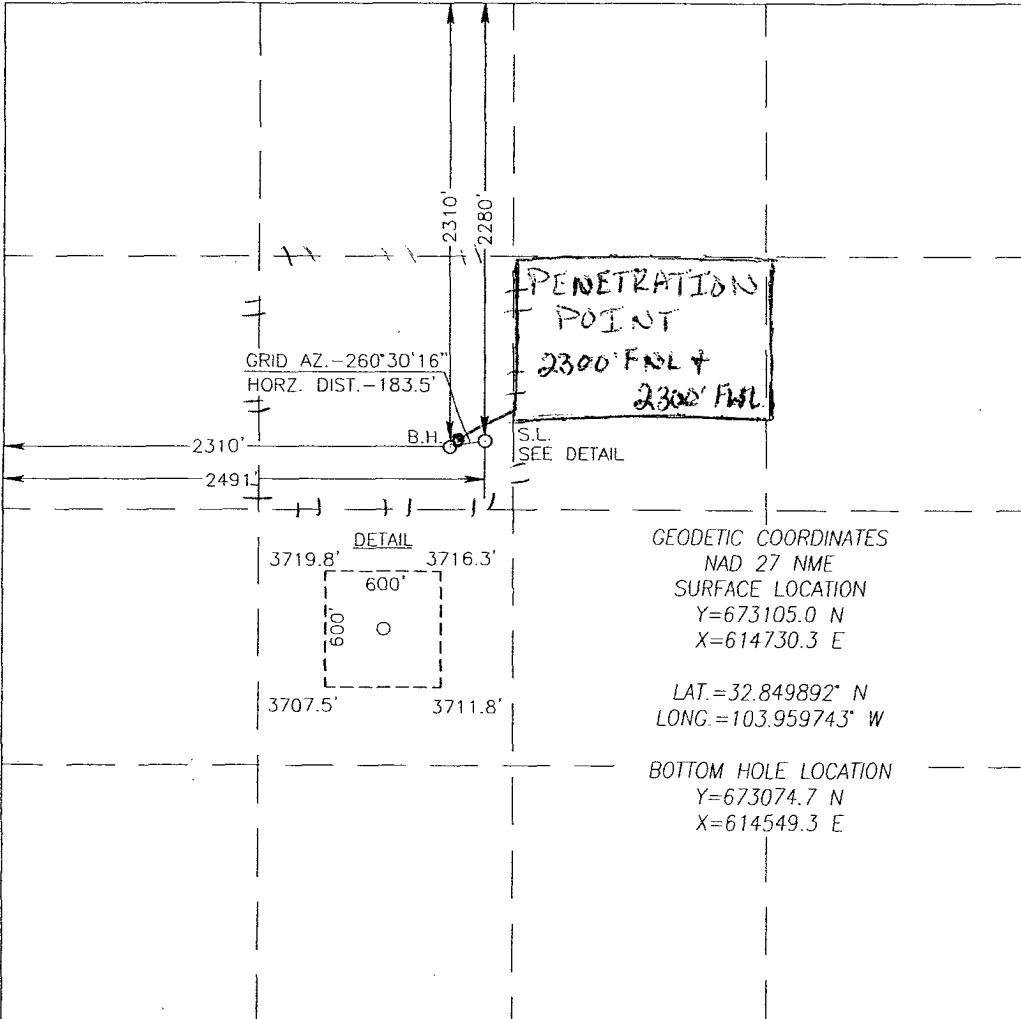
UL or lot No. F	Section 10	Township 17-S	Range 30-E	Lot Idn	Feet from the 2280	North/South line NORTH	Feet from the 2491	East/West line WEST	County EDDY
--------------------	---------------	------------------	---------------	---------	-----------------------	---------------------------	-----------------------	------------------------	----------------

Bottom Hole Location If Different From Surface

UL or lot No. F	Section 10	Township 17-S	Range 30-E	Lot Idn	Feet from the 2310	North/South line NORTH	Feet from the 2310	East/West line WEST	County EDDY
--------------------	---------------	------------------	---------------	---------	-----------------------	---------------------------	-----------------------	------------------------	----------------

Dedicated Acres	Joint or Infill	Consolidation Code	Order No.
-----------------	-----------------	--------------------	-----------

NO ALLOWABLE WILL BE ASSIGNED TO THIS COMPLETION UNTIL ALL INTERESTS HAVE BEEN CONSOLIDATED  
OR A NON-STANDARD UNIT HAS BEEN APPROVED BY THE DIVISION

	<p><b>OPERATOR CERTIFICATION</b></p> <p>I hereby certify that the information herein is true and complete to the best of my knowledge and belief, and that this organization either owns a working interest or unleased mineral interest in the land including the proposed bottom hole location or has a right to drill this well at this location pursuant to a contract with an owner of such mineral or working interest, or to a voluntary pooling agreement or a compulsory pooling order heretofore entered by the division.</p> <p>Signature: <u>Kelly J. Holly</u> Date: <u>11/04/2010</u></p> <p>Printed Name: <u>Kelly J. Holly</u></p>
	<p><b>SURVEYOR CERTIFICATION</b></p> <p>I hereby certify that the well location shown on this plat was plotted from field notes of actual surveys made by me or under my supervision, and that the same is true and correct to the best of my belief.</p> <p>Date Surveyed: <u>11/03/10</u></p> <p>Signature &amp; Seal of Professional Surveyor: <u>GARY G. EIDSON</u> 12641</p> <p>Certificate No. <u>GARY G. EIDSON 12641</u> <u>RONALD J. EIDSON 3239</u></p>

DISTRICT I  
1625 N. FRENCH DR., HOBBS, NM 88240

State of New Mexico  
Energy, Minerals and Natural Resources Department

Form C-102

Revised October 12, 2005

DISTRICT II  
1301 W. GRAND AVENUE, ARTESIA, NM 88210

OIL CONSERVATION DIVISION

Submit to Appropriate District Office

State Lease - 4 Copies

Fee Lease - 3 Copies

DISTRICT III  
1000 RIO BRAZOS RD., AZTEC, NM 87410

11885 SOUTH ST. FRANCIS DR.  
Santa Fe, New Mexico 87505

DISTRICT IV  
11885 S. ST. FRANCIS DR., SANTA FE, NM 87505

WELL LOCATION AND ACREAGE DEDICATION PLAT

☐ AMENDED REPORT

API Number 30-015-	Pool Code 96718	Pool Name LOCO HILLS; GLORIETA-YESO
Property Code 302483	Property Name ELECTRA FEDERAL	Well Number 52
OGRID No. 229137	Operator Name COG OPERATING, LLC	Elevation 3712'

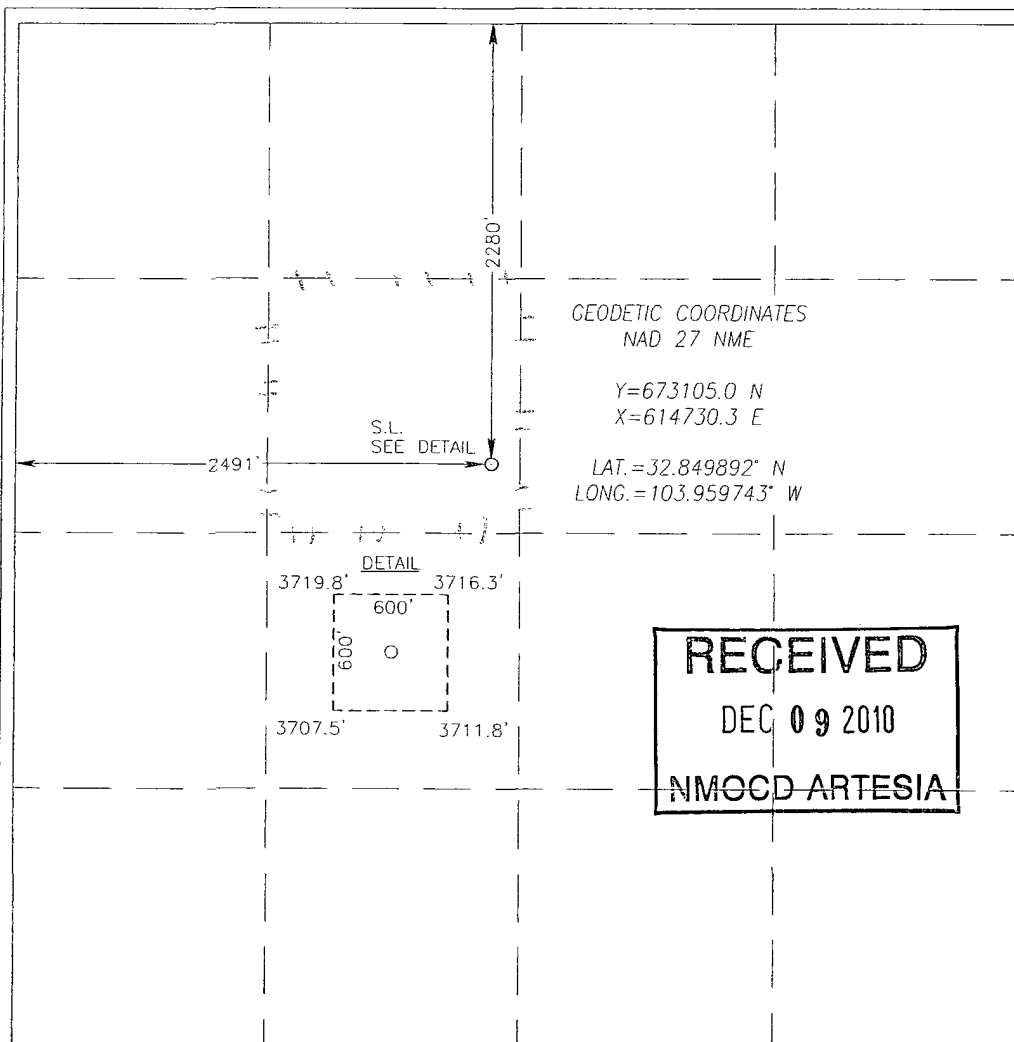
Surface Location

UL or lot No. F	Section 10	Township 17-S	Range 30-E	Lot Idn	Feet from the 2280	North/South line NORTH	Feet from the 2491	East/West line WEST	County EDDY
--------------------	---------------	------------------	---------------	---------	-----------------------	---------------------------	-----------------------	------------------------	----------------

Bottom Hole Location If Different From Surface

UL or lot No.	Section	Township	Range	Lot Idn	Feet from the	North/South line	Feet from the	East/West line	County
Dedicated Acres 40	Joint or Infill	Consolidation Code	Order No.						

NO ALLOWABLE WILL BE ASSIGNED TO THIS COMPLETION UNTIL ALL INTERESTS HAVE BEEN CONSOLIDATED  
OR A NON-STANDARD UNIT HAS BEEN APPROVED BY THE DIVISION



OPERATOR CERTIFICATION

I hereby certify that the information herein is true and complete to the best of my knowledge and belief, and that this organization either owns a working interest or unleased mineral interest in the land including the proposed bottom hole location or has a right to drill this well at this location pursuant to a contract with an owner of such mineral or working interest, or to a voluntary pooling agreement or a compulsory pooling order heretofore entered by the division.

Signature: *Robyn Odom* Date: 9/8/2010  
Printed Name: Robyn Odom

SURVEYOR CERTIFICATION

I hereby certify that the well location shown on this plat was plotted from field notes of actual surveys made by me or under my supervision, and that the same is true and correct to the best of my belief.

AUGUST 26, 2010

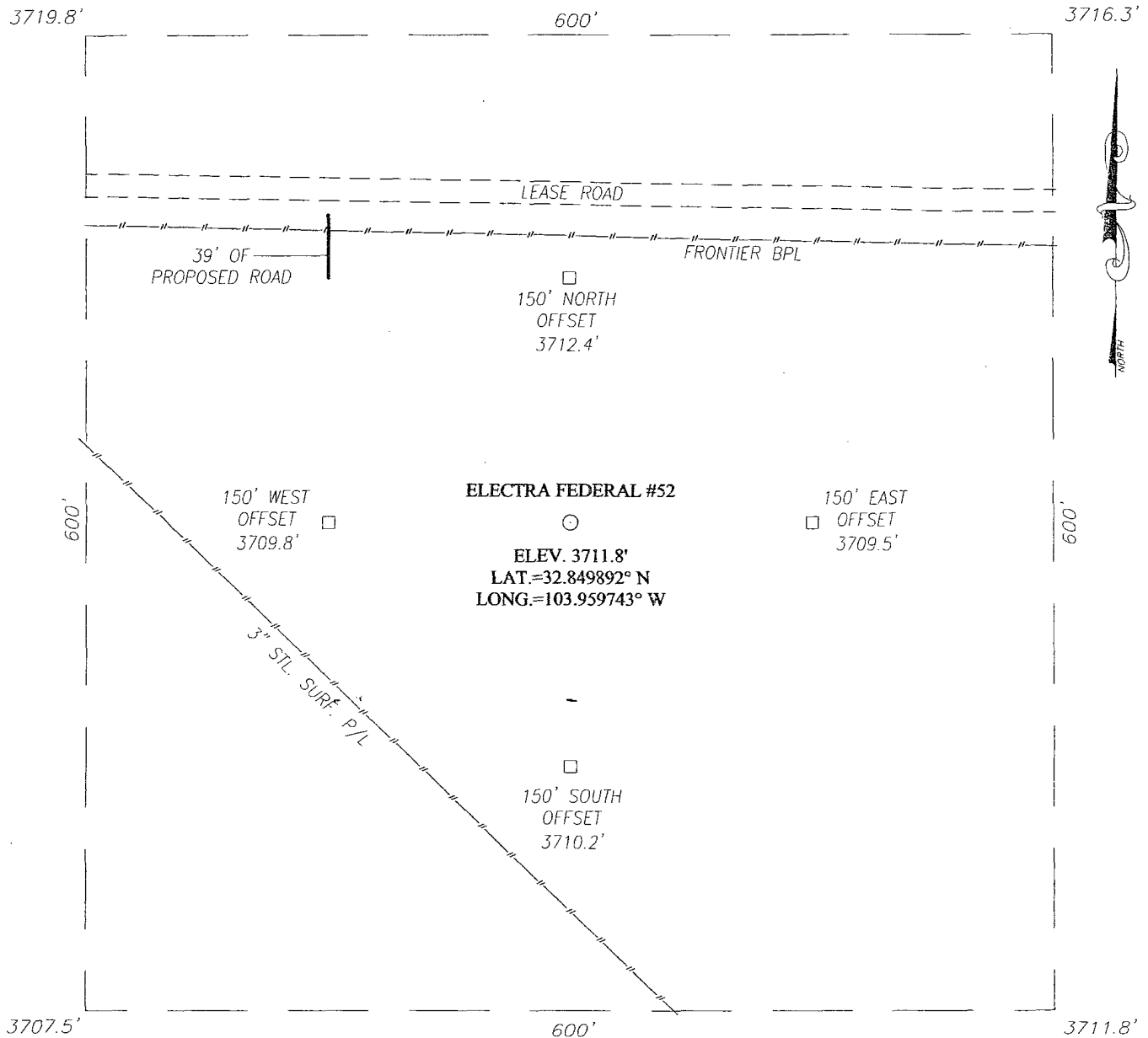
Date Surveyed: LA  
Signature & Seal of Professional Surveyor

*Ronald J. Eidson* 09/07/2010  
10-11-1096

Certificate No. GARY G. EIDSON 12641  
RONALD J. EIDSON 3239

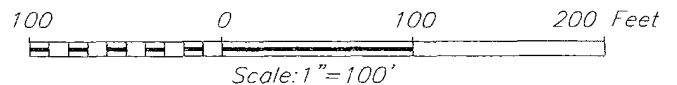
X 1st submitted

**SECTION 10, TOWNSHIP 17 SOUTH, RANGE 30 EAST, N.M.P.M.,**  
 EDDY COUNTY, NEW MEXICO



**DIRECTIONS TO LOCATION**

FROM THE INTERSECTION OF U.S. HWY. #82 AND CO. RD. #217 (HAGERMAN CUTOFF), GO NORTH ON CO. RD. #217 APPROX. 1.7 MILES. TURN RIGHT AND GO EAST APPROX. 1.3 MILES. TURN LEFT AND GO NORTH APPROX. 0.5 MILES. TURN RIGHT AND GO EAST APPROX. 0.1 MILE. THE LOCATION IS APPROX. 200 FEET SOUTH OF LEASE ROAD.



PROVIDING SURVEYING SERVICES  
 SINCE 1946  
**JOHN WEST SURVEYING COMPANY**  
 412 N. DAL PASO  
 HOBBS, N.M. 88240  
 (575) 393-3117

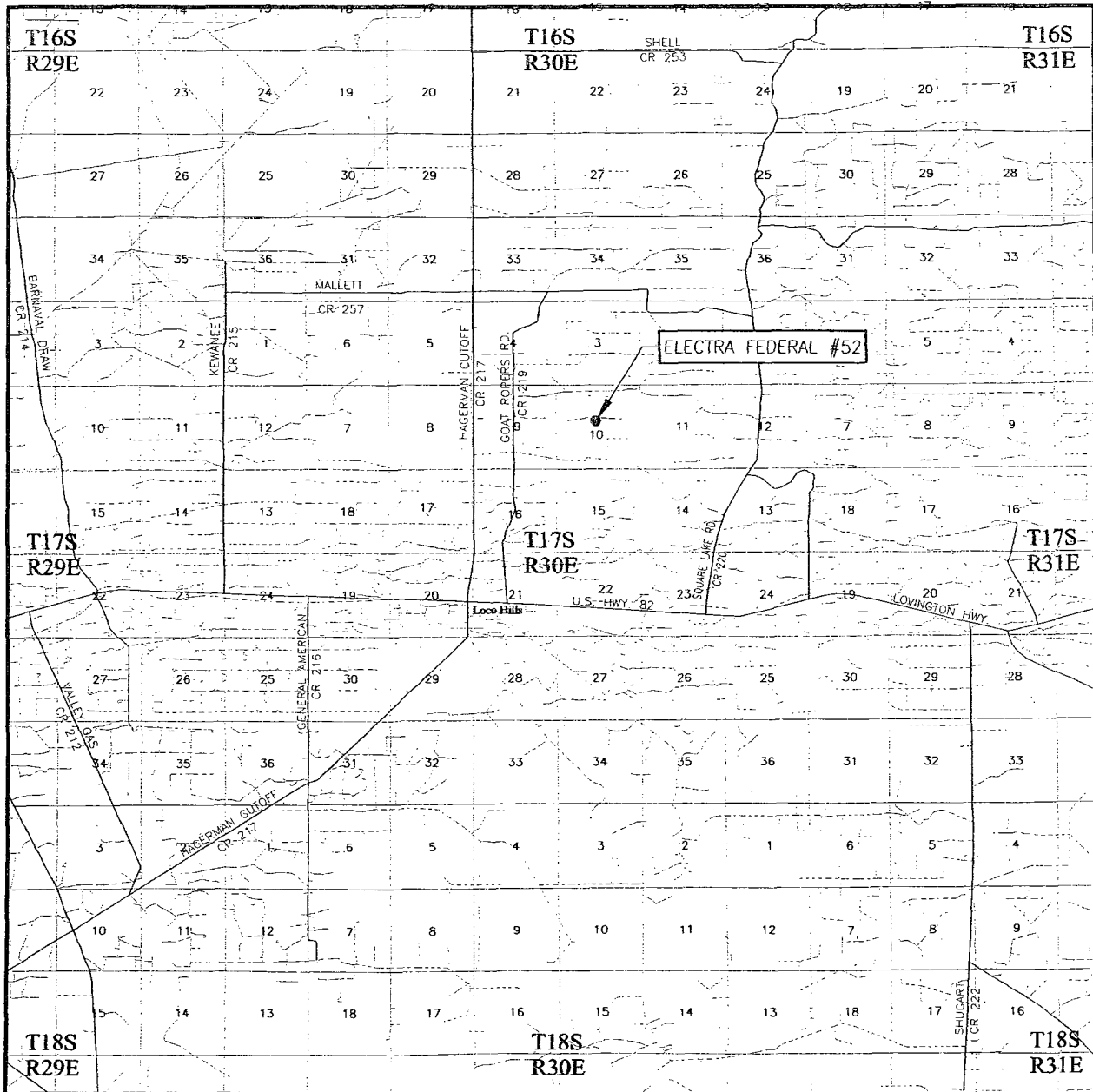
**COG OPERATING, LLC**

ELECTRA FEDERAL #52 WELL  
 LOCATED 2280 FEET FROM THE NORTH LINE  
 AND 2491 FEET FROM THE WEST LINE OF SECTION 10,  
 TOWNSHIP 17 SOUTH, RANGE 30 EAST, N.M.P.M.,  
 EDDY COUNTY, NEW MEXICO

Survey Date: 8/26/10	Sheet 1 of 1 Sheets
W.O. Number: 10.11.1096	Dr By: LA
Date: 9/2/10	10111096
	Scale: 1"=100'

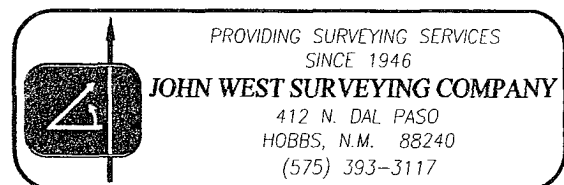
*1<sup>st</sup> submitted*

# VICINITY MAP



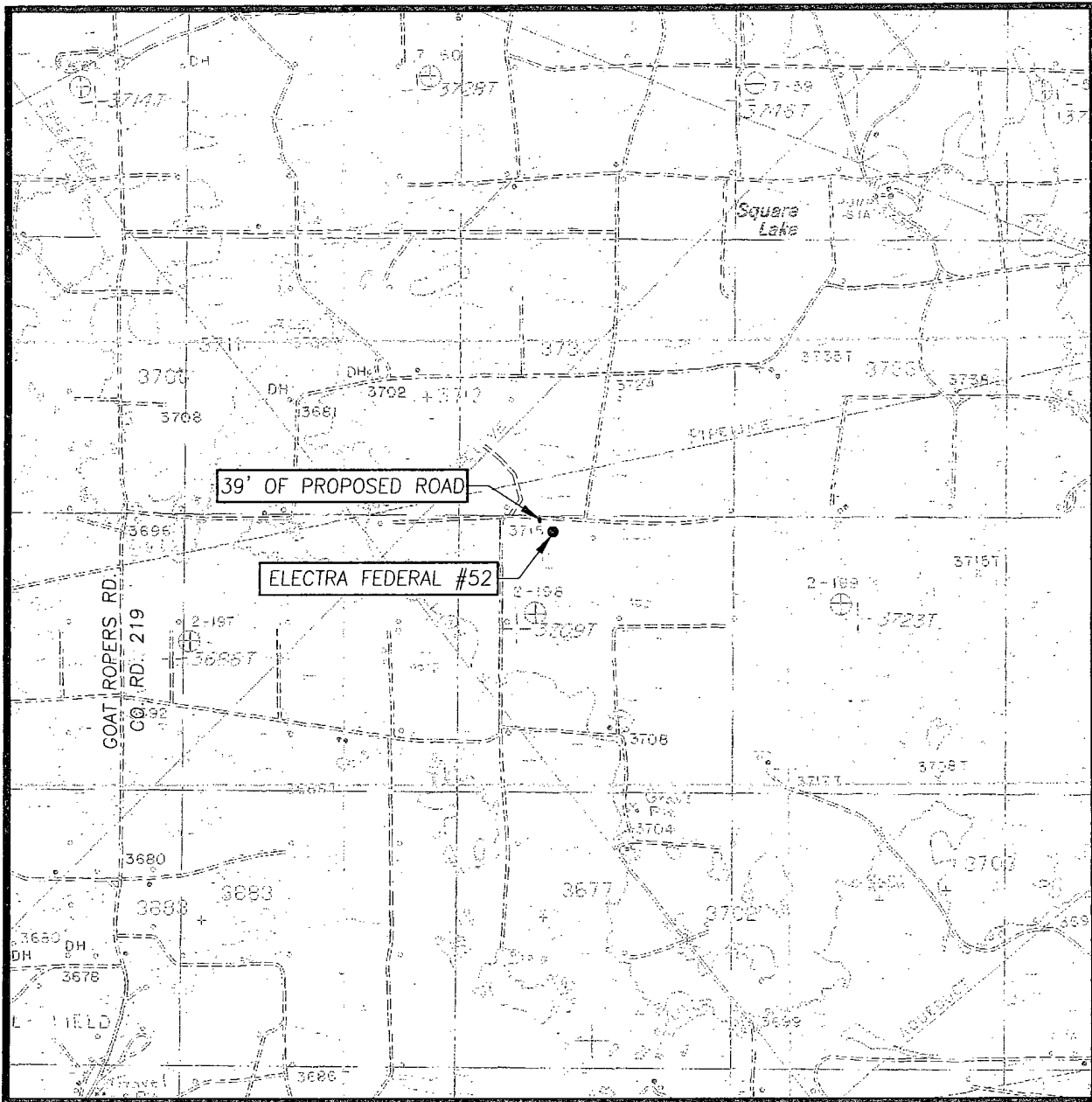
SCALE: 1" = 2 MILES

SEC. 10 TWP. 17-S RGE. 30-E  
 SURVEY N.M.P.M.  
 COUNTY EDDY STATE NEW MEXICO  
 DESCRIPTION 2280' FNL & 2491' FWL  
 ELEVATION 3712'  
 OPERATOR COG OPERATING, LLC  
 EDDYSE ELECTRA FEDERAL



X d d

# LOCATION VERIFICATION MAP



SCALE: 1" = 2000'

CONTOUR INTERVAL:  
LOCO HILLS, N.M. - 10'

SEC. 10 TWP. 17-S RGE. 30-E

SURVEY N.M.P.M.

COUNTY EDDY STATE NEW MEXICO

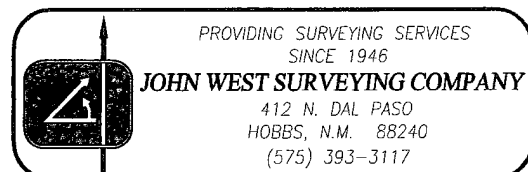
DESCRIPTION 2280' FNL & 2491' FWL

ELEVATION 3712'

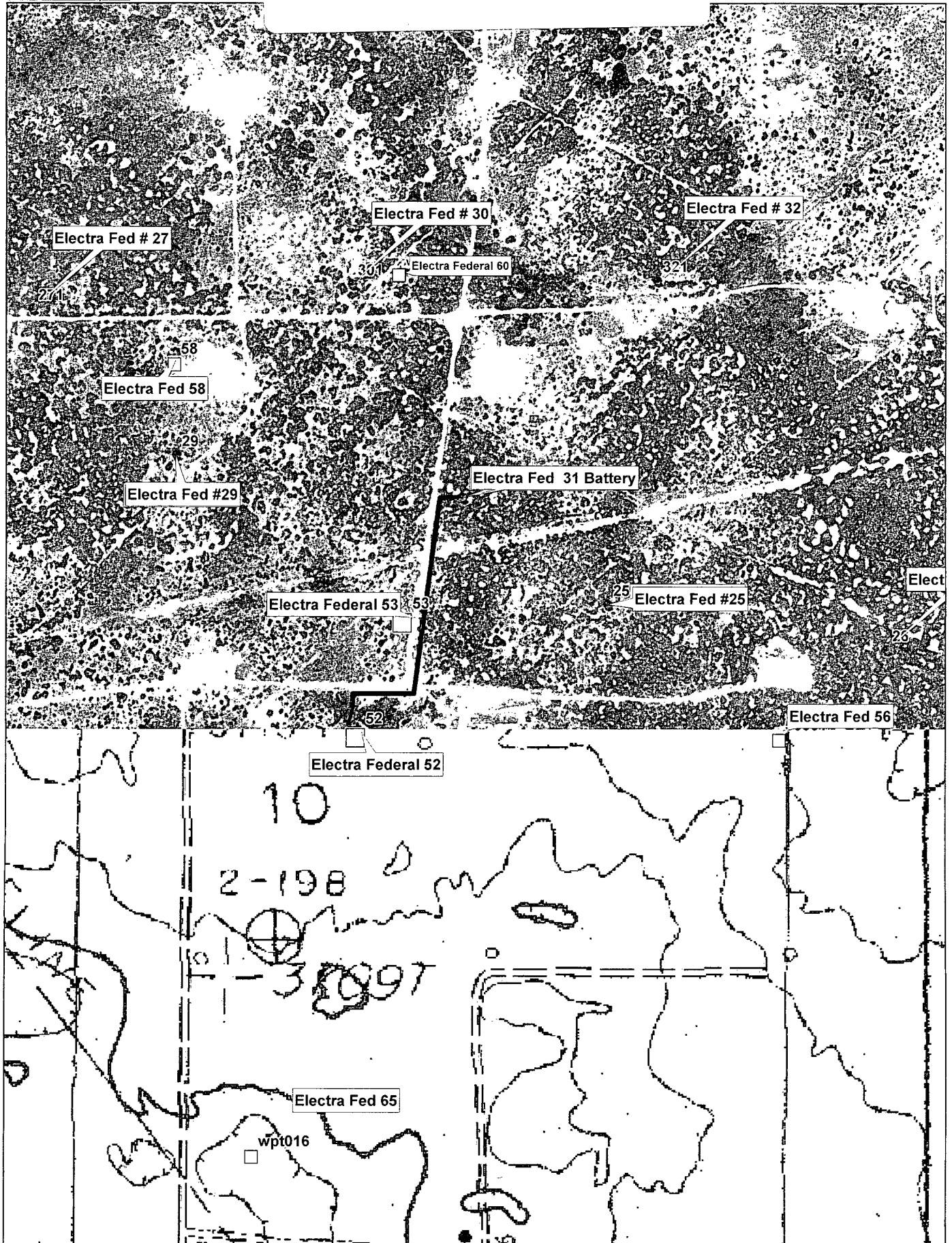
OPERATOR COG OPERATING, LLC

EDDYSE ELECTRA FEDERAL

U.S.G.S. TOPOGRAPHIC MAP  
LOCO HILLS, N.M.



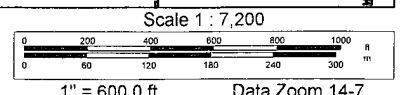
X old



Data use subject to license.

© DeLorme. XMap® 7.

www.delorme.com



X old