

30-015-38353

COG Operating LLC

Hydrogen Sulfide Drilling Operation Plan

I. HYDROGEN SULFIDE TRAINING

All personnel, whether regularly assigned, contracted, or employed on an unscheduled basis, will receive training from a qualified instructor in the following areas prior to commencing drilling operations on this well:

1. The hazards and characteristics of hydrogen sulfide (H₂S)
2. The proper use and maintenance of personal protective equipment and life support systems.
3. The proper use of H₂S detectors, alarms, warning systems, briefing areas, evacuation procedures, and prevailing winds.
4. The proper techniques for first aid and rescue procedures.

In addition, supervisory personnel will be trained in the following areas:

1. The effects of H₂S on metal components. If high tensile tubular are to be used, personnel will be trained in their special maintenance requirements.
2. Corrective action and shut-in procedures when drilling or reworking a well and blowout prevention and well control procedures.
3. The contents and requirements of the H₂S Drilling Operations Plan and Public Protection Plan.

There will be an initial training session just prior to encountering a known or probable H₂S zone (within 3 days or 500 feet) and weekly H₂S and well control drills for all personnel in each crew. The initial training session shall include a review of the site specific H₂S Drilling Operations Plan and the Public Protection Plan. **The concentrations of H₂S of wells in this area from surface to TD are low enough that a contingency plan is not required.**

II. H2S SAFETY EQUIPMENT AND SYSTEMS

Note: All H2S safety equipment and systems will be installed, tested, and operational when drilling reaches a depth of 500 feet above, or three days prior to penetrating the first zone containing or reasonable expected to contain H2S.

1. Well Control Equipment:

- A. Flare line.
- B. Choke manifold.
- C. Blind rams and pipe rams to accommodate all pipe sizes with properly sized closing unit.
- D. Auxiliary equipment may include if applicable: annular preventer & rotating head.

2. Protective equipment for essential personnel:

- A. Mark II Survive air 30-minute units located in the doghouse and at briefing areas, as indicated on well site diagram.

3. H2S detection and monitoring equipment:

- A. 1 portable H2S monitors positioned on location for best coverage and response. These units have warning lights and audible sirens when H2S levels of 20 PPM are reached.

4. Visual warning systems:

- A. Wind direction indicators as shown on well site diagram (Exhibit #8).
- B. Caution/Danger signs (Exhibit #7) shall be posted on roads providing direct access to location. Signs will be painted a high visibility yellow with black lettering of sufficient size to be readable at a reasonable distance from the immediate location. Bilingual signs will be used, when appropriate. See example attached.

5. Mud program:

- A. The mud program has been designed to minimize the volume of H2S circulated to surface. Proper mud weight, safe drilling practices, and the use of H2S scavengers will minimize hazards when penetrating H2S bearing zones.

6. Metallurgy:

- A. All drill strings, casings, tubing, wellhead, blowout preventer, drilling spool, kill lines, choke manifold and lines, and valves shall be suitable for H₂S service.
- B. All elastomers used for packing and seals shall be H₂S trim.

7. Communication:

- A. Radio communications in company vehicles including cellular telephone and 2-way radio.
- B. Land line (telephone) communication at Office.

8. Well testing:

- A. Drill stem testing will be performed with a minimum number of personnel in the immediate vicinity, which are necessary to safely and adequately conduct the test. The drill stem testing will be conducted during daylight hours and formation fluids will not be flowed to the surface. All drill-stem-testing operations conducted in an H₂S environment will use the closed chamber method of testing.
- B. There will be no drill stem testing.

EXHIBIT #7

WARNING
YOU ARE ENTERING AN H₂S
AUTHORIZED PERSONNEL ONLY

- 1. BEARDS OR CONTACT LENSES NOT ALLOWED
- 2. HARD HATS REQUIRED
- 3. SMOKING IN DESIGNATED AREAS ONLY
- 4. BE WIND CONSCIOUS AT ALL TIMES
- 5. CHECK WITH COG OPERATING FOREMAN AT

COG OPERATING LLC
1-432-683-7443
1-575-746-2010

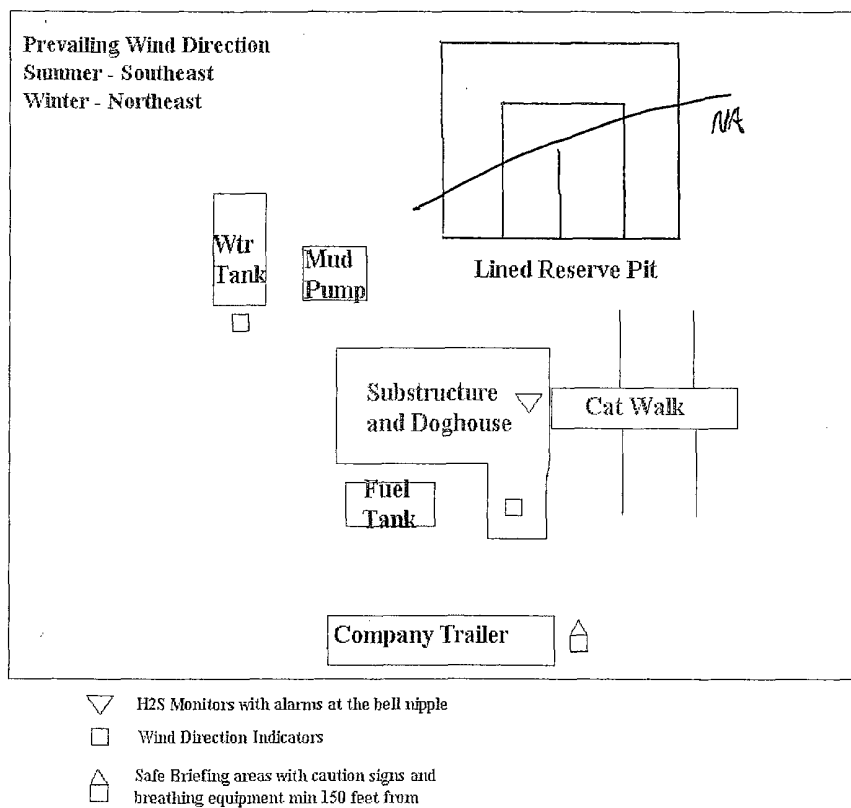
EDDY COUNTY EMERGENCY NUMBERS

ARTESIA FIRE DEPT. 575-746-5050
ARTESIA POLICE DEPT. 575-746-5000
EDDY CO. SHERIFF DEPT. 575-746-9888

LEA COUNTY EMERGENCY NUMBERS

HOBBS FIRE DEPT. 575-397-9308
HOBBS POLICE DEPT. 575-397-9285
LEA CO. SHERIFF DEPT. 575-396-1196

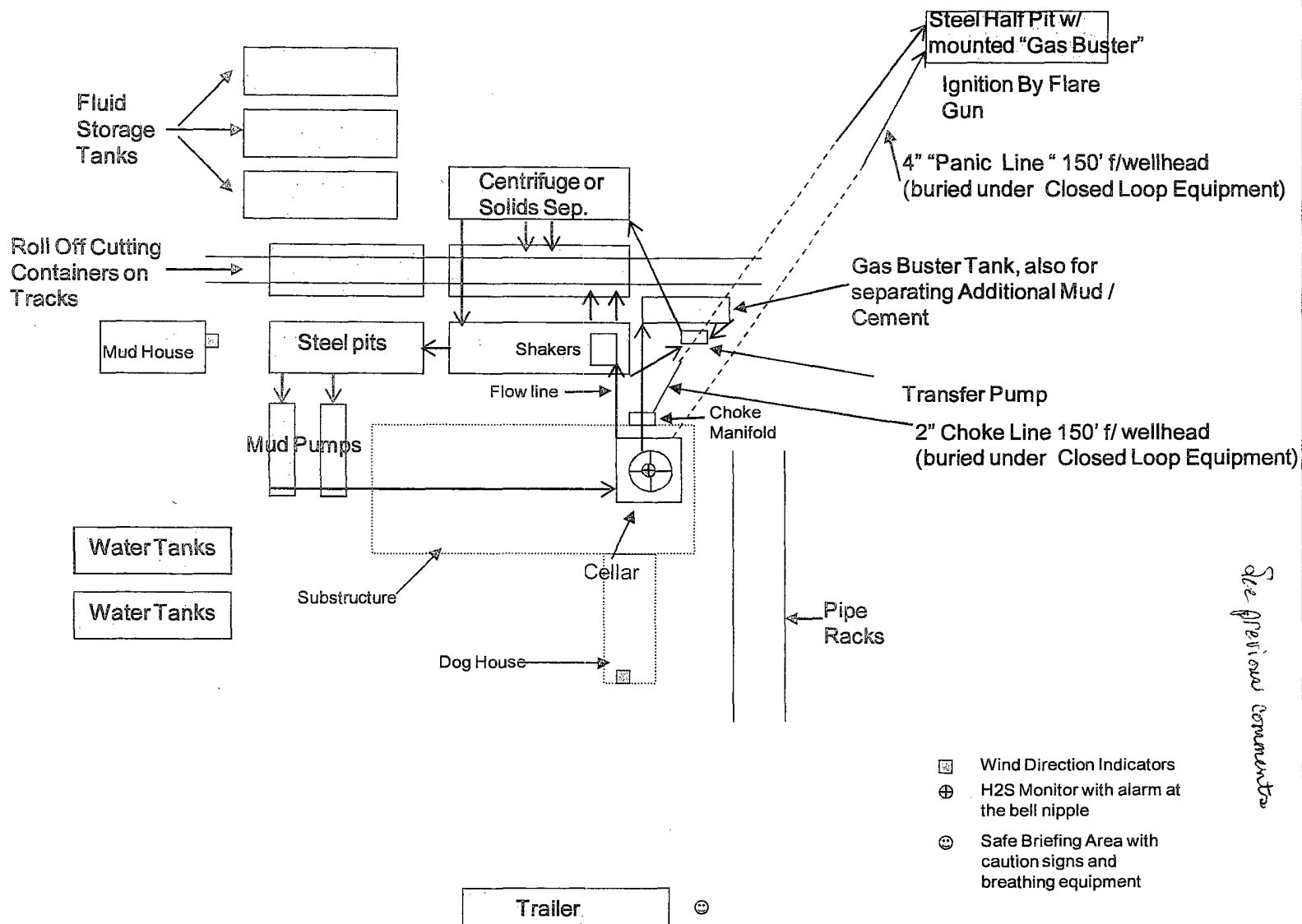
DRILLING LOCATION H₂S SAFETY EQUIPMENT Exhibit # 8



COG Operating LLC

EXHIBIT 8

Drilling Location - H2S Safety Equipment Diagram



SURFACE USE AND OPERATING PLAN

1. Existing & Proposed Access Roads

- A. The well site survey and elevation plat for the proposed well is shown in Exhibit #1. It was staked by John West Engineering, Hobbs, NM.
- B. All roads to the location are shown in the topographic map Exhibit #2. The existing lease roads are illustrated and are adequate for travel during drilling and production operations. Upgrading existing roads prior to drilling the well will be done where necessary.
- C. **Directions to Location:** From the intersection US Highway 82 and Co. Rd. 217 (Hagerman Cutoff), Go North on County Road 217 apprx 1.7 miles. Turn Right and Go East apprx 1.3 mile. Turn Left and to North apprx 0.5 mile. Turn Right & Go East apprx 0.1 mile. The location stake is apprx 200 feet South of lease road. See Vicinity Map, Exhibit #3.
- D. Routine grading and maintenance of existing roads will be conducted as necessary to maintain their condition as long as any operations continue on this lease. Roads will be maintained according to specifications in section 2A of this Surface Use and Operating Plan.

2. Proposed Access Road:

Exhibit #4 shows that 39' of new access road will be required for this location. If any road is required it will be constructed as follows:

- A. The maximum width of the running surface will be 14'. The road will be crowned, ditched and constructed of 6" rolled and compacted caliche. Ditches will be at 3:1 slope and 4 feet wide. Water will be diverted where necessary to avoid ponding, prevent erosion, maintain good drainage, and to be consistent with local drainage patterns.
- B. The average grade will be less than 1%.
- C. No turnouts are planned.
- D. No culverts, cattleguard, gates, low water crossings or fence cuts are necessary.

- E. Surfacing material will consist of native caliche. Caliche will be obtained from the actual well site if available. If not available onsite, caliche will be hauled from the nearest BLM caliche pit.

3. Location of Existing Well:

Exhibit #5 shows all existing wells within a one-mile radius of this well.

As shown on this plat there are numerous wells producing from the San Andres and Yeso formations.

4. Location of Existing and/or Proposed Facilities:

- A. COG Operating LLC does operate a production facility on this lease.
- B. If the well is productive, contemplated facilities will be as follows:
 - 1) Production will be sent to the Electra Federal tank battery located at the Electra Federal #31 well location at 1170 FNL & 2310 FEL, Section 10, T17S, R30E, UL B. The facility location is shown in Exhibit #5.
 - 2) The tank battery and facilities including all flow lines and piping will be installed according to API specifications.
 - 3) Any additional caliche will be obtained from the actual well site. If caliche does not exist or is not plentiful from the well site, the caliche will be hauled from a BLM approved caliche pit. Any additional construction materials will be purchased from contractors.
 - 4) Proposed flow lines, will follow an archaeologically approved route to the Electra Federal tank battery located at the Electra Federal #31 well location at 1170 FNL & 2310 FEL, Section 10, T17S, R30E, UL B. The flowline will be SDR 7 3" poly line laid on the surface and will be approximately 1560' in length with max pressure 100 psi. Flowlines will be no more than 11' from the paralleling road.
 - 5) It will be necessary to run electric power if this well is productive. Power will be provided by CVE and they will submit a separate plan and ROW for service to the well location.
 - 6) If the well is productive, rehabilitation plans will include the following:
 - a) The original topsoil from the well site will be returned to the location, and the site will be re-contoured as close as possible to the original site.

5. Location and Type of Water Supply:

The well will be drilled with combination brine and fresh water mud system as outlined in the drilling program. The water will be obtained from commercial water stations in the area and hauled to location by transport truck over the existing and proposed access roads shown in Exhibit #2. If a commercial fresh water source is nearby, fast line may be laid along existing road ROW's and fresh water pumped to the well. No water well will be drilled on the location.

6. Source of Construction Materials and Location "Turn-Over" Procedure:

Obtaining caliche: The primary way of obtaining caliche to build locations and roads will be by "turning over" the location. This means, caliche will be obtained from the actual well sight. A caliche permit will be obtained from BLM prior to pushing up any caliche. 2400 cu. Yards is max amount of caliche needed for pad and roads. Amount will vary for each pad. The procedure below has been approved by BLM personnel:

- A. The top 6 inches of topsoil is pushed off and stockpiled along the side of the location.
- B. An approximate 120' X 120' area is used within the proposed well site to remove caliche.
- C. Subsoil is removed and piled along side the 120' by 120' area within the pad site.
- D. When caliche is found, material will be stock piled within the pad site to build the location and road.
- E. Then subsoil is pushed back in the hole and caliche is spread accordingly across entire location and road.
- F. Once well is drilled, the stock piled top soil will be used for interim reclamation and spread along areas where caliche is picked up and the location size is reduced. Neither caliche or subsoil will be stock piled outside of the well pad. Topsoil will be stockpiled along the edge of the pad as depicted in attached plat.

In the event that no caliche is found onsite, caliche will be hauled in from a BLM approved caliche pit.

7. Methods of Handling Water Disposal:

- A. The well will be drilled utilizing a closed loop mud system. Drill cuttings will be held in roll-off style mud boxes and taken to an NMOCD approved disposal site.
- B. Drilling fluids will be contained in steel mud pits.

- C. Water produced from the well during completion will be held temporarily in steel tanks and then taken to an NMOCD approved commercial disposal facility.
- D. Garbage and trash produced during drilling or completion operations will be collected in a trash bin and hauled to an approved landfill. No toxic waste or hazardous chemicals will be produced by this operation.
- E. After the rig is moved out and the well is either completed or abandoned, all waste materials will be cleaned up within 30 days. In the event of a dry hole only a dry hole marker will remain.

8. Ancillary Facilities:

No airstrip, campsite or other facilities will be built as a result of the operation on this well.

9. Well Site Layout:

- A. The drill pad layout, with elevations staked by John West Engineering, is shown in Exhibit #4. Dimensions of the pad and pits are shown on Exhibit #6. . V door direction is West. Topsoil, if available, will be stockpiled per BLM specifications. Because the pad is almost level no major cuts will be required.
- B. Exhibit #6 also shows the proposed orientation of closed loop system and access road. No permanent living facilities are planned, but a temporary foreman/toolpusher's trailer will be on location during the drilling operations.

10. Plans for Restoration of the Surface:

- A. Interim Reclamation will take place after the well has been completed. The pad will be downsized by reclaiming the areas not needed for production operations. The portions of the pad that are not needed for production operations will be recontoured to its original state as much as possible. The caliche that is removed will be reused to either build another pad site or for road repairs within the lease. The stockpiled topsoil will then be spread out reclaimed area and reseeded with a BLM approved seed mixture. In the event that the well must be worked over or maintained, it may be necessary to drive, park, and/or operate machinery on reclaimed land. This area will be repaired or reclaimed after work is complete.

- B. Final Reclamation: Upon plugging and abandoning the well, All caliche for well pad and lease road will be removed and surface will be recountoured to reflect its surroundings as much as possible. Caliche will be recycled for road repair or reused for another well pad within the lease. If any topsoil remains, it will be spread out and the area will be re-seeded with a BLM approved mixture and revegetated as per BLM orders.

11.Surface Ownership:

- A. The surface is owned by the U.S. Government and is administered by the Bureau of Land Management. The surface is multiple uses with the primary uses of the region for grazing of livestock and the production of oil and gas.
- B. The surface tenant for this site is Charles K. Martin, P O Box 706, Artesia, NM 88211.
- C. The proposed road routes and surface location will be restored as directed by the BLM

12.Other Information:

- A. The area around the well site is grassland and the topsoil is sandy. The vegetation is moderately sparse with native prairie grasses, some mesquite and shinnery oak. No wildlife was observed but it is likely that mule deer, rabbits, coyotes and rodents traverse the area.
- B. There is no permanent or live water in the immediate area.
- C. There are no dwellings within 2 miles of this location.
- D. If needed, a Cultural Resources Examination is being prepared by Southern New Mexico Archaeological Services, Inc. P.O. Box 1, Bent New Mexico, 88314, phone # 505-671-4797 and the results will be forwarded to your office in the near future. Otherwise, **COG will be participating in the Permian Basin MOA Program.**

Surface Use Plan
COG Operating, LLC
Electra Federal 52
2280' FNL & 2491' FWL
Section 10, T-17-S, R-30-E, UL F
Eddy County, New Mexico

13. Bond Coverage:

Bond Coverage is Nationwide Bond # 000215

14. Lessee's and Operator's Representative:

The COG Operating LLC representative responsible for assuring compliance with the surface use plan is as follows:

John Coffman,	Erick Nelson.
Drilling Superintendent	Division Operations Manager
COG Operating LLC	COG Operating LLC
550 W. Texas, Suite 1300	550 W. Texas, Suite 1300
Midland, TX 79701	Midland, TX 79701
Phone (432) 683-7443 (office)	Phone (505) 746-2210 (office)
(432) 631-9762 (cell)	(432) 238-7591 (cell)

Surface Use Plan
COG Operating, LLC
Electra Federal 52
2280' FNL & 2491' FWL
Section 10, T-17-S, R-30-E, UL F
Eddy County, New Mexico

I hereby certify that I, or persons under my direct supervision, have inspected the drill site and access road proposed herein; that I am familiar with the conditions that presently exist; that I have full knowledge of State and Federal laws applicable to this operation; that the statements made in this APD package are, to the best of my knowledge, true and correct; and that the work associated with the operations proposed herein will be performed in conformity with this APD package and the terms and conditions under which it is approved. I also certify that I, or COG Operating, LLC, am responsible for the operations conducted under this application. These statements are subject to the provisions of 18 U.S.C. 1001 for the filing of false statements. Executed this 16th day of September, 2010.

Signed: _____

Printed Name: Carl Bird

Position: Drilling Engineer

Address: 550 W. Texas, Suite 1300, Midland, Texas 79701

Telephone: (432) 683-7443

Field Representative (if not above signatory): Same

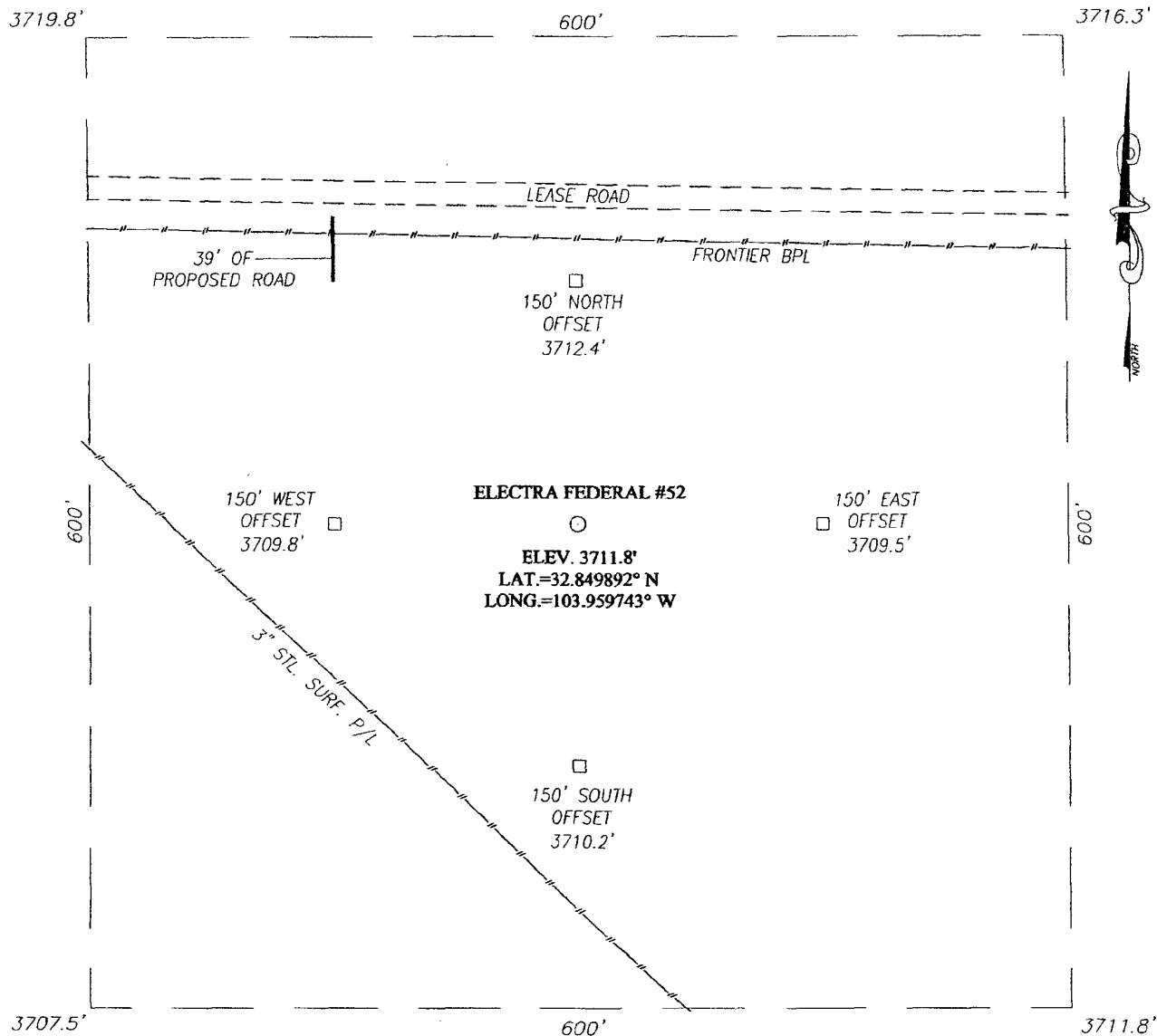
E-mail: cbird@conchoresources.com

Surface Use Plan
COG Operating, LLC
Electra Federal 52
2280' FNL & 2491' FWL
Section 10, T-17-S, R-30-E, UL F
Eddy County, New Mexico

Exhibits:

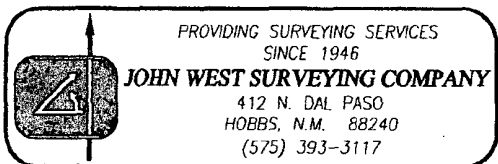
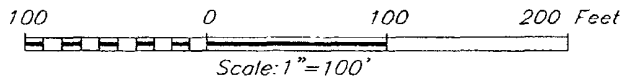
- | | |
|--------------------|---|
| Exhibit #1 | Wellsite and Elevation Plat |
| | Form C-102 Well location and acreage dedication plat |
| Exhibit #2 | Topographic Map (West) |
| Exhibit #3 | Vicinity Map and area roads |
| Exhibit #4 | Elevation Plat (West) |
| Exhibit #5 | Topographic extract showing wells, roads and flowlines |
| Exhibit #6 | Pad Layout and orientation |
| Exhibit #7 | H2S Signage |
| Exhibit #8 | H2S Equipment location |
| Exhibit #9 | BOP and Choke diagrams |
| Exhibit #10 | Form C-144 NMOCD pit permit application |

SECTION 10, TOWNSHIP 17 SOUTH, RANGE 30 EAST, N.M.P.M.,
 EDDY COUNTY, NEW MEXICO



DIRECTIONS TO LOCATION

FROM THE INTERSECTION OF U.S. HWY. #82 AND CO. RD. #217 (HAGERMAN CUTOFF), GO NORTH ON CO. RD. #217 APPROX. 1.7 MILES. TURN RIGHT AND GO EAST APPROX. 1.3 MILES. TURN LEFT AND GO NORTH APPROX. 0.5 MILES. TURN RIGHT AND GO EAST APPROX. 0.1 MILE. THE LOCATION IS APPROX. 200 FEET SOUTH OF LEASE ROAD.

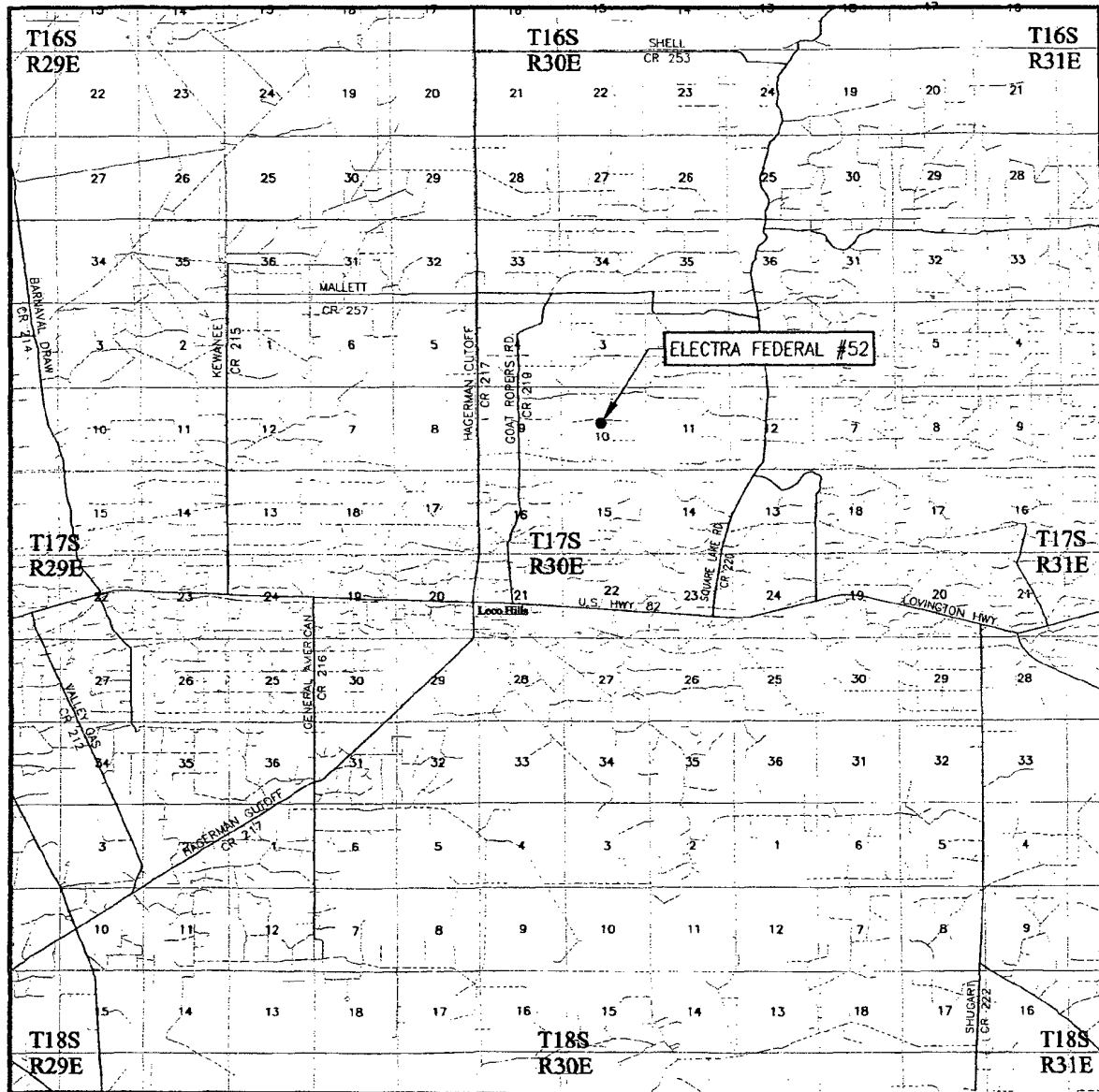


COG OPERATING, LLC

ELECTRA FEDERAL #52 WELL
 LOCATED 2280 FEET FROM THE NORTH LINE
 AND 2491 FEET FROM THE WEST LINE OF SECTION 10,
 TOWNSHIP 17 SOUTH, RANGE 30 EAST, N.M.P.M.,
 EDDY COUNTY, NEW MEXICO


Survey Date: 8/26/10	Sheet 1 of 1 Sheets
W.O. Number: 10.11.1096	Dr By: LA
Date: 9/2/10	10111096
	Scale: 1"=100'

VICINITY MAP



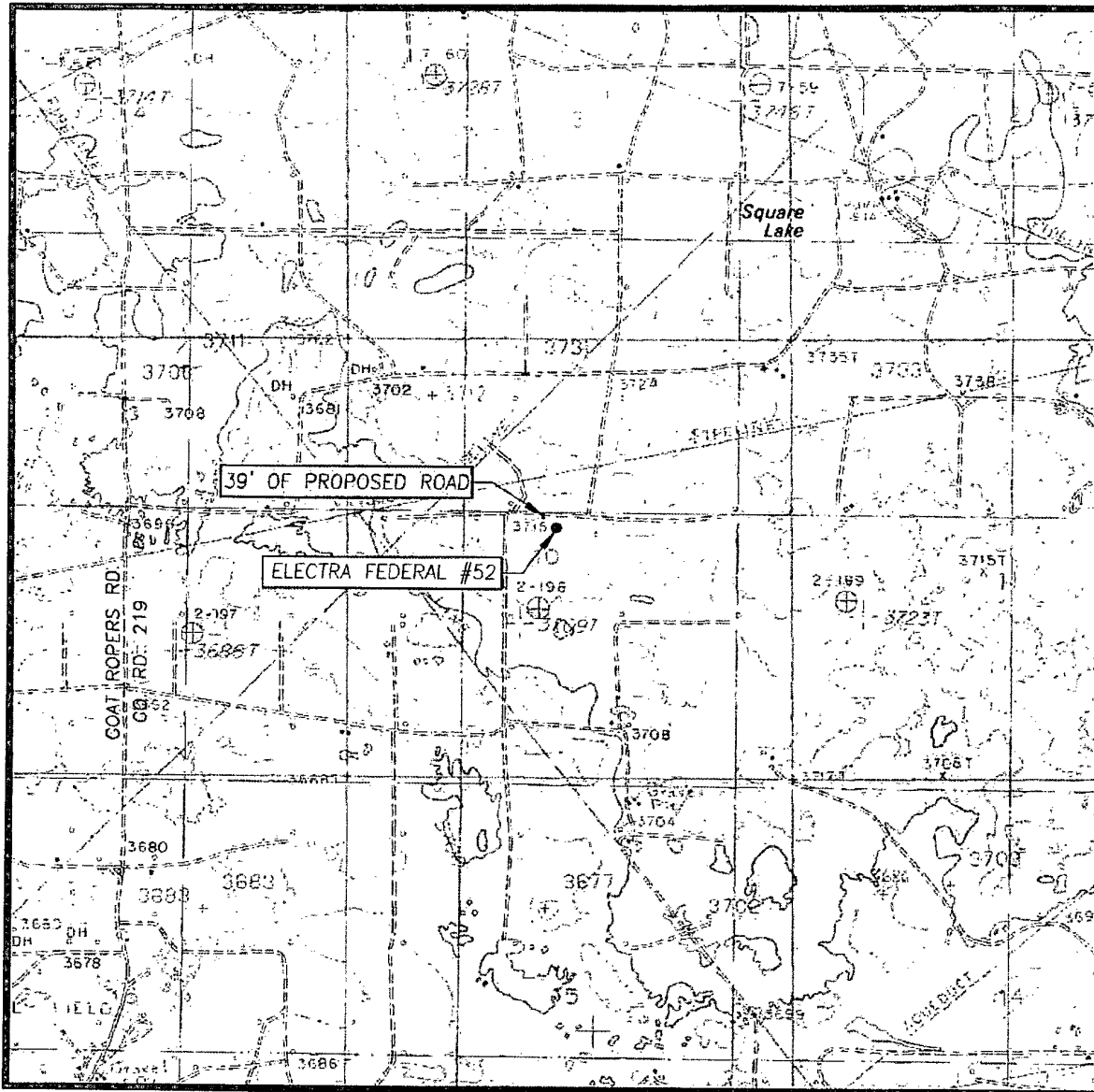
SCALE: 1" = 2 MILES

SEC. 10 TWP. 17-S RGE. 30-E
 SURVEY N.M.P.M.
 COUNTY EDDY STATE NEW MEXICO
 DESCRIPTION 2280' FNL & 2491' FWL
 ELEVATION 3712'
 OPERATOR COG OPERATING, LLC
 EDDYSE ELECTRA FEDERAL



PROVIDING SURVEYING SERVICES
 SINCE 1946
JOHN WEST SURVEYING COMPANY
 412 N. DAL PASO
 HOBBS, N.M. 88240
 (575) 393-3117

LOCATION VERIFICATION MAP



SCALE: 1" = 2000'

CONTOUR INTERVAL:
LOCO HILLS, N.M. - 10'

SEC. 10 TWP. 17-S RGE. 30-E

SURVEY N.M.P.M.

COUNTY EDDY STATE NEW MEXICO

DESCRIPTION 2280' FNL & 2491' FWL

ELEVATION 3712'

OPERATOR COG OPERATING, LLC

EDDYSE ELECTRA FEDERAL

U.S.G.S. TOPOGRAPHIC MAP

LOCO HILLS, N.M.

PROVIDING SURVEYING SERVICES
SINCE 1946

JOHN WEST SURVEYING COMPANY

412 N. DAL PASO
HOBBS, N.M. 88240
(575) 393-3117

Offset Wells to Electra Federal #52

API#	Operator	County	Legal	Lease	Well#	Date Issued	Permitted Depth	Permit TVD	Images	Doc	Total Depth	Well Type	Well Status	TD Source	Permit#
30-015-38183	COG OPERATING LLC	EDDY	S:10, T:17S, R:30E	ELECTRA FEDERAL	060	9/1/2010	6,150		No	link	6,150	PO	Active Permit	Permit	TEMP1352328106
30-015-38180	COG OPERATING LLC	EDDY	S:15, T:17S, R:30E	ELECTRA FEDERAL	066	8/31/2010	6,150		No	link	6,150	PO	Active Permit	Permit	TEMP1637526592
30-015-38181	COG OPERATING LLC	EDDY	S:10, T:17S, R:30E	ELECTRA FEDERAL	056	8/31/2010	6,150		No	link	6,150	PO	Active Permit	Permit	TEMP201234374
30-015-38182	COG OPERATING LLC	EDDY	S:10, T:17S, R:30E	ELECTRA FEDERAL	058	8/31/2010	6,150		No	link	6,150	PO	Active Permit	Permit	TEMP539528208
30-015-38184	COG OPERATING LLC	EDDY	S:10, T:17S, R:30E	ELECTRA FEDERAL	064	8/31/2010	6,050		No	link	6,050	PO	Active Permit	Permit	TEMP1109766089
30-015-38185	COG OPERATING LLC	EDDY	S:10, T:17S, R:30E	ELECTRA FEDERAL	065	8/31/2010	6,000		No	link	6,000	PO	Active Permit	Permit	TEMP1467633996
30-015-38108	THOMPSON, J. CLEO	EDDY	S:4, T:17S, R:30E	COLUMBUS "4"	1	8/6/2010	6,000		Yes	link	6,000	PO	Active	Permit	TEMP2079040900
30-015-38050	COG OPERATING LLC	EDDY	S:9, T:17S, R:30E	MIRANDA FEDERAL	16	7/20/2010	6,000		Yes	link	6,000	PO	Active	Permit	TEMP294378621
30-015-38053	COG OPERATING LLC	EDDY	S:9, T:17S, R:30E	MIRANDA FEDERAL	18	7/20/2010	6,000		Yes	link	6,000	PO	Active	Permit	TEMP549730574
30-015-37826	COG OPERATING LLC	EDDY	S:9, T:17S, R:30E	POLARIS B FEDERAL	13	5/10/2010	6,000		Yes	link	6,000	PO	Active Permit	Permit	TEMP1590385516
30-015-37794	CIMAREX ENERGY CO. OF COLORADO	EDDY	S:3, T:17S, R:30E	POSEIDON "3" FEDERAL COM	17	4/23/2010	6,000		Yes	link	6,000	PO	Active Permit	Permit	TEMP659685108
30-015-37808	CIMAREX ENERGY CO. OF COLORADO	EDDY	S:3, T:17S, R:30E	POSEIDON "3" FEDERAL	19	4/23/2010	6,000		Yes	link	6,000	PO	Active Permit	Permit	TEMP596934719
30-015-37809	CIMAREX ENERGY CO. OF COLORADO	EDDY	S:3, T:17S, R:30E	POSEIDON "3" FEDERAL	18	4/23/2010	6,000		Yes	link	6,000	PO	Active Permit	Permit	TEMP1510265666
30-015-37536	CIMAREX ENERGY CO. OF COLORADO	EDDY	S:2, T:17S, R:30E	CASTOR 2 STATE	001	2/2/2010	6,000		Yes	link	6,000	PO	Active Permit	Permit	TEMP1368766046
30-015-37458	COG OPERATING LLC	EDDY	S:2, T:17S, R:30E	YALE STATE	033	12/29/2009	6,200		Yes	link	6,200	PO	Active Permit	Permit	TEMP1535138214
30-015-37459	COG OPERATING LLC	EDDY	S:2, T:17S, R:30E	YALE STATE	001	12/29/2009	6,200		Yes	link	6,200	PO	Active Permit	Permit	TEMP1941479025
30-015-37460	COG OPERATING LLC	EDDY	S:2, T:17S, R:30E	YALE STATE	017	12/29/2009	6,200		Yes	link	6,200	PO	Active Permit	Permit	TEMP1142856090
30-015-37493	BURNETT OIL CO., INC.	EDDY	S:11, T:17S, R:30E	GISSLER "B"	57	12/16/2009	6,000		Yes	link	6,000	O	Active Permit	Permit	TEMP98128470
	COG OPERATING			CARMEN											

30-015-37478	LLC	EDDY	S:3, T:17S, R:30E	FEDERAL	2	12/12/2009	6,109	6,100	Yes	link	6,109	PO	Active Permit	Permit	TEMP1339044596
30-015-37441	COG OPERATING LLC	EDDY	S:10, T:17S, R:30E	ELECTRA-FEDERAL	61	12/9/2009	5,950		Yes	link	5,950	PO	Active Permit	Permit	TEMP1329887806
30-015-37442	COG OPERATING LLC	EDDY	S:10, T:17S, R:30E	ELECTRA-FEDERAL	59	12/9/2009	5,950		Yes	link	5,950	PO	Active Permit	Permit	TEMP1382341820
30-015-37443	COG OPERATING LLC	EDDY	S:10, T:17S, R:30E	ELECTRA-FEDERAL	57	12/9/2009	6,000		Yes	link	6,000	PG	Active Permit	Permit	TEMP2093451377
30-015-37411	COG OPERATING LLC	EDDY	S:10, T:17S, R:30E	ELECTRA-FEDERAL	50	12/4/2009	6,050		Yes	link	6,050	PO	Active Permit	Permit	TEMP384714085
30-015-37380	CIMAREX ENERGY CO. OF COLORADO	EDDY	S:10, T:17S, R:30E	HYDRUS "10" FEDERAL	11	11/3/2009	6,000		Yes	link	6,000	O	Active Permit	Permit	TEMP1164129741
30-015-37381	CIMAREX ENERGY CO. OF COLORADO	EDDY	S:10, T:17S, R:30E	HYDRUS "10" FEDERAL	3707	11/3/2009	6,000		Yes	link	5,773	O	Active Permit	Completion	TEMP1822603675
30-015-37383	CIMAREX ENERGY CO. OF COLORADO	EDDY	S:10, T:17S, R:30E	HYDRUS "10" FEDERAL	12	11/3/2009	6,011	6,000	Yes	link	5,945	O	Active Permit	Completion	TEMP1310217795
30-015-37342	CIMAREX ENERGY CO. OF COLORADO	EDDY	S:10, T:17S, R:30E	HYDRUS "10"	9	10/13/2009	6,013	4,768	Yes	link	5,997	O	Active Permit	Completion	TEMP350729798
30-015-37318	COG OPERATING LLC	EDDY	S:9, T:17S, R:30E	MIRANDA FEDERAL	3	10/6/2009	6,170	6,150	Yes	link	6,065	O	Active Permit	Completion	TEMP907776691
30-015-37315	COG OPERATING LLC	EDDY	S:9, T:17S, R:30E	MIRANDA FEDERAL	6	10/6/2009	6,000		Yes	link	6,000	PO	Active Permit	Permit	TEMP1797634667
30-015-37247	COG OPERATING LLC	EDDY	S:10, T:17S, R:30E	ELECTRA FEDERAL	54	8/21/2009	5,950		Yes	link	5,950	PO	Active Permit	Permit	TEMP1579575474
30-015-37225	COG OPERATING LLC	EDDY	S:10, T:17S, R:30E	ELECTRA FEDERAL	63	8/12/2009	5,950		Yes	link	5,950	PO	Active Permit	Permit	TEMP2108970565
30-015-37226	COG OPERATING LLC	EDDY	S:10, T:17S, R:30E	ELECTRA FEDERAL	45	8/12/2009	6,050		Yes	link	6,070	O	Active Permit	Completion	TEMP1073317048
30-015-37224	COG OPERATING LLC	EDDY	S:10, T:17S, R:30E	ELECTRA FEDERAL	51	8/12/2009	5,950		Yes	link	6,050	O	Active Permit	Completion	TEMP1980340262
30-015-37223	COG OPERATING LLC	EDDY	S:10, T:17S, R:30E	ELECTRA FEDERAL	47	8/12/2009	6,050		Yes	link	6,050	PG	Active Permit	Permit	TEMP72082703
30-015-37197	COG OPERATING LLC	EDDY	S:10, T:17S, R:30E	ELECTRA FEDERAL	26	7/29/2009	6,000		Yes	link	6,008	O	Active Permit	Completion	TEMP1817297794
30-015-31583	COG OPERATING LLC	EDDY	S:16, T:17S, R:30E	TEXACO BE	5	6/9/2009	6,200		Yes	link	5,982	O	Pumping	Completion	TEMP1807484942
30-015-31585	COG OPERATING LLC	EDDY	S:16, T:17S, R:30E	TEXACO BE	6	6/9/2009	6,200		Yes	link	4,913	PO	Pumping	Completion	TEMP1044111092
30-015-37087	COG OPERATING LLC	EDDY	S:10, T:17S, R:30E	ELECTRA FEDERAL	41	5/19/2009	6,020	6,000	Yes	link	6,020	PO	Active Permit	Permit	TEMP1654540654
	COG														

30-015-37088	OPERATING LLC	EDDY	S:10, T:17S, R:30E	ELECTRA FEDERAL	44	5/19/2009	6,106	6,100	Yes	link	6,106	PO	Active Permit	Permit	TEMP805797442
30-015-37080	COG OPERATING LLC	EDDY	S:15, T:17S, R:30E	ELECTRA FEDERAL	38	5/19/2009	6,000		Yes	link	6,000	PO	Active Permit	Permit	TEMP877137453
30-015-37086	COG OPERATING LLC	EDDY	S:10, T:17S, R:30E	ELECTRA FEDERAL	42	5/19/2009	6,000		Yes	link	6,054	O	Active Permit	Completion	TEMP1329367888
30-015-37082	COG OPERATING LLC	EDDY	S:15, T:17S, R:30E	ELECTRA FEDERAL	39	5/19/2009	6,000		Yes	link	6,002	O	Active Permit	Completion	TEMP2124951541
30-015-37081	COG OPERATING LLC	EDDY	S:15, T:17S, R:30E	ELECTRA FEDERAL	40	5/19/2009	6,000		Yes	link	6,039	O	Active Permit	Completion	TEMP422968915
30-015-37107	COG OPERATING LLC	EDDY	S:10, T:17S, R:30E	ELECTRA FEDERAL	46	5/19/2009	6,000		Yes	link	6,033	O	Active Permit	Completion	TEMP256366600
30-015-37279	COG OPERATING LLC	EDDY	S:10, T:17S, R:30E	ELECTRA FEDERAL	48	5/19/2009	6,000		Yes	link	6,014	O	Active Permit	Completion	TEMP1919727700
30-015-36272	COG OPERATING LLC	EDDY	S:15, T:17S, R:30E	ELECTRA FEDERAL	24	3/13/2009	7,330		Yes	link	9,600	O	Active Permit	Completion	TEMP1041872142
30-015-36961	COG OPERATING LLC	EDDY	S:10, T:17S, R:30E	ELECTRA FEDERAL	43	2/23/2009	6,000		Yes	link	6,003	O	Active Permit	Completion	TEMP1294170018
30-015-36959	COG OPERATING LLC	EDDY	S:15, T:17S, R:30E	ELECTRA FEDERAL	37	2/19/2009	6,000		Yes	link	6,011	O	Active Permit	Completion	TEMP333349679
30-015-36957	COG OPERATING LLC	EDDY	S:10, T:17S, R:30E	ELECTRA FEDERAL	36	2/19/2009	6,000		Yes	link	6,006	O	Active Permit	Completion	TEMP1773788264
30-015-36958	COG OPERATING LLC	EDDY	S:10, T:17S, R:30E	ELECTRA FEDERAL	35	2/19/2009	6,000		Yes	link	6,044	O	Active Permit	Completion	TEMP772705040
30-015-36893	COG OPERATING LLC	EDDY	S:9, T:17S, R:30E	POLARIS B FEDERAL	30	1/8/2009	6,000		Yes	link	6,000	PO	Active Permit	Permit	TEMP1407801079
30-015-36894	PREMIER OIL & GAS, INC.	EDDY	S:15, T:17S, R:30E	DALE H PARKE B TR C	25	1/8/2009	6,150		Yes	link	6,150	O	Active Permit	Permit	TEMP212010768
30-015-36823	CIMAREX ENERGY CO. OF COLORADO	EDDY	S:3, T:17S, R:30E	POSEIDON 3 FEDERAL	3	12/2/2008	6,000		Yes	link	5,614	O	Active Permit	Completion	TEMP1931276398
30-015-36821	CIMAREX ENERGY CO. OF COLORADO	EDDY	S:3, T:17S, R:30E	POSEIDON 3 FEDERAL	13	11/28/2008	6,012	6,000	Yes	link	6,012	PO	Active Permit	Permit	TEMP1512849616
30-015-36822	CIMAREX ENERGY CO. OF COLORADO	EDDY	S:3, T:17S, R:30E	POSEIDON 3 FEDERAL	5	11/28/2008	6,004	6,000	Yes	link	6,000	O	Active Permit	Completion	TEMP655523231
30-015-36820	CIMAREX ENERGY CO. OF COLORADO	EDDY	S:3, T:17S, R:30E	POSEIDON 3 FEDERAL	1	11/28/2008	6,023	6,000	Yes	link	6,023	PO	Active Permit	Permit	TEMP178584501
30-015-36783	BURNETT OIL CO., INC.	EDDY	S:11, T:17S, R:30E	GISSLER B	50	11/24/2008	6,000		Yes	link	6,000	O	Active Permit	Permit	TEMP851811880
30-015-36761	PREMIER OIL & GAS, INC.	EDDY	S:15, T:17S, R:30E	DALE H. PARKE B TR. C	24	10/31/2008	6,150		Yes	link	6,150	O	Active Permit	Permit	TEMP1798992831
30-015-36743	CIMAREX ENERGY CO. OF COLORADO	EDDY	S:3, T:17S, R:30E	POSEIDON 3 FEDERAL	7	10/24/2008	6,012	6,000	Yes	link	5,696	O	Active Permit	Completion	TEMP1898501753

30-015-36739	COG OPERATING LLC	EDDY	S:10, T:17S, R:30E	ELECTRA FEDERAL	25	10/23/2008	6,000		Yes	link	6,010	O	Active Permit	Completion	TEMP377503053
30-015-36741	COG OPERATING LLC	EDDY	S:10, T:17S, R:30E	ELECTRA FEDERAL	27	10/23/2008	6,000		Yes	link	6,008	O	Active Permit	Completion	TEMP1399748471
30-015-36944	COG OPERATING LLC	EDDY	S:10, T:17S, R:30E	ELECTRA FEDERAL	32	10/16/2008	6,000		Yes	link	6,004	O	Active Permit	Completion	TEMP262159621
30-015-36707	COG OPERATING LLC	EDDY	S:9, T:17S, R:30E	POLARIS B FEDERAL	21	10/7/2008	6,000		Yes	link	6,010	O	Active Permit	Completion	TEMP2094721500
30-015-36710	COG OPERATING LLC	EDDY	S:9, T:17S, R:30E	POLARIS B FEDERAL	24	10/7/2008	6,000		Yes	link	6,005	O	Active Permit	Completion	TEMP1181899106
30-015-36708	COG OPERATING LLC	EDDY	S:9, T:17S, R:30E	POLARIS B FEDERAL	22	10/7/2008	6,000		Yes	link	6,014	O	Active Permit	Completion	TEMP1133770360
30-015-36663	COG OPERATING, LLC or COG OPERATING LLC	EDDY	S:9, T:17S, R:30E	POLARIS B FEDERAL	31	10/3/2008	6,000		Yes	link	6,006	O	Active Permit	Completion	TEMP1993502779
30-015-36667	COG OPERATING LLC	EDDY	S:9, T:17S, R:30E	POLARIS B FEDERAL	32	10/3/2008	6,000		Yes	link	6,015	O	Active Permit	Completion	TEMP1434316969
30-015-36611	CIMAREX ENERGY CO. OF COLORADO	EDDY	S:3, T:17S, R:30E	POSEIDON 3 FEDERAL	12	9/7/2008	6,000		Yes	link	6,000	PO	Active Permit	Permit	TEMP415567852
30-015-36614	CIMAREX ENERGY CO. OF COLORADO	EDDY	S:3, T:17S, R:30E	POSEIDON 3 FEDERAL	16	9/3/2008	6,000		Yes	link	6,000	PO	Active Permit	Permit	TEMP729702097
30-015-36609	CIMAREX ENERGY CO. OF COLORADO	EDDY	S:3, T:17S, R:30E	POSEIDON 3 FEDERAL	9	9/3/2008	6,000		Yes	link	6,000	PO	Active Permit	Permit	TEMP32141951
30-015-36608	CIMAREX ENERGY CO. OF COLORADO	EDDY	S:3, T:17S, R:30E	POSEIDON 3 FEDERAL	8	9/3/2008	6,000		Yes	link	6,000	PO	Active Permit	Permit	TEMP785660898
30-015-36612	CIMAREX ENERGY CO. OF COLORADO	EDDY	S:3, T:17S, R:30E	POSEIDON 3 FEDERAL	14	9/3/2008	6,000		Yes	link	6,000	PO	Active Permit	Permit	TEMP1708599286
30-015-36613	CIMAREX ENERGY CO. OF COLORADO	EDDY	S:3, T:17S, R:30E	POSEIDON 3 FEDERAL	15	9/3/2008	6,000		Yes	link	6,000	PO	Active Permit	Permit	TEMP191726485
30-015-36610	CIMAREX ENERGY CO. OF COLORADO	EDDY	S:3, T:17S, R:30E	POSEIDON 3 FEDERAL	11	9/3/2008	6,000		Yes	link	6,000	PO	Active Permit	Permit	TEMP1104809481
30-015-36607	CIMAREX ENERGY CO. OF COLORADO	EDDY	S:3, T:17S, R:30E	POSEIDON 3 FEDERAL	2	9/3/2008	6,000		Yes	link	6,000	PO	Active Permit	Permit	TEMP1032037220
30-015-36569	CIMAREX ENERGY CO. OF COLORADO	EDDY	S:3, T:17S, R:30E	POSEIDON 3 FEDERAL	006	8/25/2008	6,000		Yes	link	6,050	O	Active Permit	Completion	TEMP795520315
30-015-36570	CIMAREX ENERGY CO. OF COLORADO	EDDY	S:3, T:17S, R:30E	POSEIDON 3 FEDERAL	004	8/25/2008	6,000		Yes	link	6,000	O	Active Permit	Permit	TEMP894943759
30-015-26233	COG OPERATING LLC	EDDY	S:16, T:17S, R:30E	TEXACO BE	4	8/22/2008	6,000		Yes	link	4,970	O	Active	WellLog	TEMP442165493

30-015-36488	COG OPERATING LLC	EDDY	S:16, T:17S, R:30E	TEXACO BE	011	8/10/2008			Yes	link	6,022	O	Active Permit	Completion	TEMP774224795
30-015-36544	CIMAREX ENERGY CO. OF COLORADO	EDDY	S:10, T:17S, R:30E	HYDRUS 10 FEDERAL	6	8/5/2008	6,000		Yes	link	6,027	O	Active Permit	Completion	TEMP1210437623
30-015-36545	CIMAREX ENERGY CO. OF COLORADO	EDDY	S:10, T:17S, R:30E	HYDRUS 10 FEDERAL	7	8/5/2008	6,000		Yes	link	6,000	O	Active Permit	Permit	TEMP477789047
30-015-36543	CIMAREX ENERGY CO. OF COLORADO	EDDY	S:10, T:17S, R:30E	HYDRUS 10 FEDERAL	5	8/5/2008	6,000		Yes	link	6,000	O	Active Permit	Permit	TEMP1979927174
30-015-36546	CIMAREX ENERGY CO. OF COLORADO	EDDY	S:10, T:17S, R:30E	HYDRUS 10 FEDERAL	8	8/5/2008	6,000		Yes	link	5,866	O	Active Permit	Completion	TEMP7288860
30-015-36448	COG OPERATING LLC	EDDY	S:10, T:17S, R:30E	ELECTRA FEDERAL	29	7/25/2008	6,000		Yes	link	6,037	O	Active Permit	Completion	TEMP821564070
30-015-36465	COG OPERATING LLC	EDDY	S:10, T:17S, R:30E	ELECTRA FEDERAL	28	7/25/2008	6,000		Yes	link	6,034	O	Active Permit	Completion	TEMP633110441
30-015-36467	COG OPERATING LLC	EDDY	S:10, T:17S, R:30E	ELECTRA FEDERAL	31	7/25/2008	6,000		Yes	link	6,029	O	Active Permit	Completion	TEMP1668171098
30-015-36466	COG OPERATING LLC	EDDY	S:10, T:17S, R:30E	ELECTRA FEDERAL	30	7/25/2008	6,000		Yes	link	6,007	O	Active Permit	Completion	TEMP670218346
30-015-36469	COG OPERATING LLC	EDDY	S:10, T:17S, R:30E	ELECTRA FEDERAL	34	7/24/2008	6,000		Yes	link	6,004	O	Active Permit	Completion	TEMP613953058
30-015-36468	COG OPERATING LLC	EDDY	S:10, T:17S, R:30E	ELECTRA FEDERAL	33	7/24/2008	6,000		Yes	link	6,011	O	Active Permit	Completion	TEMP1928764291
30-015-36353	COG OPERATING LLC	EDDY	S:16, T:17S, R:30E	TEXACO BE	010	6/4/2008			Yes	link	6,030	O	Active Permit	Completion	TEMP1202395592
30-015-36331	CIMAREX ENERGY CO. OF COLORADO	EDDY	S:10, T:17S, R:30E	HYDRUS 10 FEDERAL	4	5/6/2008	6,000		Yes	link	6,000	O	Active Permit	Permit	TEMP190412036
30-015-36317	COG OPERATING LLC	EDDY	S:10, T:17S, R:30E	ELECTRA FEDERAL	22	5/1/2008	5,950		Yes	link	6,027	O	Active Permit	Completion	TEMP1859607366
30-015-36330	CIMAREX ENERGY CO. OF COLORADO	EDDY	S:10, T:17S, R:30E	HYDRUS 10 FEDERAL	3	4/30/2008	6,000		Yes	link	6,005	O	Active Permit	Completion	TEMP344174652
30-015-36272	COG OPERATING LLC	EDDY	S:15, T:17S, R:30E	ELECTRA FEDERAL	24	3/26/2008	5,950		Yes	link	9,600	O	Active Permit	Completion	TEMP1640351496
30-015-36233	CIMAREX ENERGY CO. OF COLORADO	EDDY	S:10, T:17S, R:30E	HYDRUS "10" FEDERAL	1	3/17/2008	6,000		Yes	link	5,980	O	Active Permit	Completion	TEMP266354045
30-015-36186	CIMAREX ENERGY CO. OF COLORADO	EDDY	S:10, T:17S, R:30E	HYDRUS 10 FEDERAL	002	3/6/2008	6,000		Yes	link	6,000	O	Active Permit	Permit	TEMP988246016
30-015-36037	PREMIER OIL & GAS INC or PREMIER OIL & GAS, INC.	EDDY	S:15, T:17S, R:30E	DALE H. PARKE B TR. C	21	1/17/2008	6,150		Yes	link	6,100	O	Active Permit	Completion	TEMP1131587252
	PREMIER OIL &														

30-015-36049	GAS INC or PREMIER OIL & GAS, INC.	EDDY	S:15, T:17S, R:30E	DALE H. PARKE B TR. C	23	1/15/2008	6,150		Yes	link	6,100	O	Active Permit	Completion	TEMP1392169083
30-015-36048	PREMIER OIL & GAS INC or PREMIER OIL & GAS, INC.	EDDY	S:15, T:17S, R:30E	DALE H. PARKE B TR. C	20	1/15/2008	6,150		Yes	link	6,100	O	Active Permit	Completion	TEMP1363490688
30-015-35979	COG OPERATING LLC	EDDY	S:10, T:17S, R:30E	ELECTRA FEDERAL	23	12/7/2007	5,950		Yes	link	5,972	O	Active Permit	Completion	TEMP1059336672
30-015-35931	COG OPERATING LLC	EDDY	S:9, T:17S, R:30E	POLARIS B FEDERAL	15	11/15/2007	5,900		Yes	link	5,920	O	Active Permit	Completion	TEMP1508882844
30-015-35895	COG OPERATING LLC	EDDY	S:10, T:17S, R:30E	ELECTRA FEDERAL	20	10/27/2007	5,950		Yes	link	5,986	O	Active Permit	Completion	TEMP1941977476
30-015-35896	COG OPERATING LLC	EDDY	S:10, T:17S, R:30E	ELECTRA FEDERAL	21	10/27/2007	5,950		Yes	link	5,950	PO	Active Permit	Permit	TEMP381997825
30-015-35780	COG OPERATING LLC	EDDY	S:15, T:17S, R:30E	ELECTRA FEDERAL	17	9/5/2007	6,100		Yes	link	6,106	O	Active Permit	Completion	TEMP1954273830
30-015-35473	COG OPERATING LLC	EDDY	S:10, T:17S, R:30E	ELECTRA FEDERAL	13	3/7/2007	6,000		Yes	link	6,016	O	Active Permit	Completion	TEMP1084171273
30-015-35427	COG OPERATING LLC	EDDY	S:10, T:17S, R:30E	ELECTRA FEDERAL	011	2/9/2007	6,000		Yes	link	6,110	O	Active Permit	Completion	TEMP1099927429
30-015-35428	COG OPERATING LLC	EDDY	S:10, T:17S, R:30E	ELECTRA FEDERAL	012	2/9/2007	6,000		Yes	link	6,000	PO	Active Permit	Permit	TEMP465644849
30-015-35429	COG OPERATING LLC	EDDY	S:10, T:17S, R:30E	ELECTRA FEDERAL	14	2/9/2007	6,000		Yes	link	6,047	O	Active Permit	Completion	TEMP1577174241
30-015-35430	COG OPERATING LLC	EDDY	S:10, T:17S, R:30E	ELECTRA FEDERAL	015	2/9/2007	6,000		Yes	link	5,925	O	Active Permit	Completion	TEMP981140710
30-015-35431	COG OPERATING LLC	EDDY	S:10, T:17S, R:30E	ELECTRA FEDERAL	016	2/9/2007	6,000		Yes	link	6,000	O	Active Permit	Permit	TEMP436257269
30-015-35649	COG OPERATING LLC	EDDY	S:9, T:17S, R:30E	POLARIS B FEDERAL	6	1/25/2007	6,000		Yes	link	5,970	O	Active	Completion	TEMP1339367287
30-015-35394	COG OPERATING LLC	EDDY	S:9, T:17S, R:30E	POLARIS B FEDERAL	009	1/23/2007	6,000		Yes	link	6,007	O	Active Permit	Completion	TEMP1587569271
30-015-35395	COG OPERATING LLC	EDDY	S:9, T:17S, R:30E	POLARIS B FEDERAL	10	1/22/2007	6,000		Yes	link	6,000	O	Active	Permit	TEMP1148479211
30-015-34883	COG OPERATING LLC	EDDY	S:16, T:17S, R:30E	PAWNEE STATE	003	5/19/2006	6,000		No	link	6,020	O	Active Permit	Completion	TEMP1408390273
30-015-34845	MACK ENERGY CORPORATION or MACK ENERGY CORP	EDDY	S:10, T:17S, R:30E	ELECTRA FEDERAL	10	5/5/2006	6,000		No	link	6,000	O	Active Permit	Permit	TEMP911316919
30-015-34721	MACK ENERGY CORPORATION or MACK ENERGY CORP	EDDY	S:10, T:17S, R:30E	ELECTRA FEDERAL	9	3/24/2006	6,000		No	link	6,070	O	Active Permit	Completion	TEMP2099552169

30-015-34719	MACK ENERGY CORPORATION or MACK ENERGY CORP	EDDY	S:15, T:17S, R:30E	ELECTRA FEDERAL	8	3/22/2006	6,000	No	link	6,075	O	Active Permit	Completion	TEMP797967130
30-015-34720	MACK ENERGY CORPORATION or MACK ENERGY CORP	EDDY	S:15, T:17S, R:30E	ELECTRA FEDERAL	7	3/22/2006	6,000	No	link	6,150	O	Active Permit	Completion	TEMP688869542
30-015-34707	MACK ENERGY CORPORATION or MACK ENERGY CORP	EDDY	S:9, T:17S, R:30E	POLARIS B FEDERAL	5	3/20/2006	6,000	No	link	5,985	O	Active Permit	Completion	TEMP18165197
30-015-34708	MACK ENERGY CORPORATION or MACK ENERGY CORP	EDDY	S:15, T:17S, R:30E	ELECTRA FEDERAL	6	3/20/2006	6,000	No	link	6,040	O	Active Permit	Completion	TEMP638870798
30-015-34538	MACK ENERGY CORPORATION or MACK ENERGY CORP	EDDY	S:16, T:17S, R:30E	MESILLA STATE	003	1/10/2006	6,000	No	link	5,970	O	Active Permit	WellLog	TEMP1325510481
30-015-34539	MACK ENERGY CORPORATION or MACK ENERGY CORP	EDDY	S:16, T:17S, R:30E	TEXACO BE	007	1/10/2006	6,000	No	link	6,630	O	Active Permit	WellLog	TEMP1286914642
30-015-34688	BURNETT OIL COMPANY, INC.	EDDY	S:14, T:17S, R:30E	GISSLER B	37	9/21/2005	5,400	No	link	5,080	O	Active Permit	Completion	TEMP1424434738
30-015-34211	MARBOB ENERGY CORP	EDDY	S:15, T:17S, R:30E	GREENTHROAT FEDERAL	001	7/13/2005	11,600	No	link	11,750	O	Active Permit	WellLog	TEMP782682229
30-015-34022	BURNETT OIL COMPANY, INC.	EDDY	S:14, T:17S, R:30E	GISSLER B	036	3/21/2005	5,400	No	link	5,390	O	Active	Completion	TEMP68224153
30-015-33517	BURNETT OIL COMPANY, INC. or BURNETT OIL CO., INC.	EDDY	S:14, T:17S, R:30E	GISSLER "B"	34	7/16/2004	5,400	No	link	5,361	O	Active	Completion	TEMP1066908346
30-015-33517	BURNETT OIL CO INC	EDDY	S:14, T:17S, R:30E	GISSLER B	034	6/30/2004		No	link	5,361	O	Active	Completion	TEMP971463573
30-015-32390	PREMIER OIL & GAS INC	EDDY	S:15, T:17S, R:30E	D H PARKE B TRACT C	015	8/22/2003		No	link	5,041	O	Active	Completion	TEMP1055887419
30-015-32397	PREMIER OIL & GAS INC	EDDY	S:15, T:17S, R:30E	D H PARKE B TRACT C	018	7/18/2003		No	link	5,030	O	Active	Completion	TEMP397801194
30-015-32396	PREMIER OIL & GAS INC or PREMIER OIL & GAS, INC.	EDDY	S:15, T:17S, R:30E	D H PARKE B TRACT C	017	5/1/2003		No	link	5,010	O	Active	Completion	TEMP337159984
30-015-10091	HANSON ENERGY	EDDY	S:10, T:17S, R:30E	GENERAL AMERICAN	001	5/1/2003	0	No	link	0	O	Pumping	Permit	TEMP1623965814
30-015-32396	PREMIER OIL & GAS INC	EDDY	S:15, T:17S, R:30E	D H PARKE B TRACT C	017	4/30/2003		No	link	5,010	O	Active	Completion	TEMP1124686177
30-015-32393	PREMIER OIL & GAS INC	EDDY	S:15, T:17S, R:30E	D H PARKE B TRACT C	014	4/3/2003		No	link	5,005	O	Active	Completion	TEMP1303927343
30-015-32372	PREMIER OIL & GAS INC	EDDY	S:15, T:17S, R:30E	D H PARKE B TRACT C	012	9/30/2002		No	link	5,018	O	Active	Completion	TEMP1240594798
	CBS OPERATING CORPORATION or CBS OPERATING													

30-015-04064	CORP	EDDY	S:3, T:17S, R:30E	FEDERAL JJ	001	9/1/2002	0		No	link	0	O	Active	Permit	TEMP1329204434
	CBS OPERATING CORPORATION or CBS OPERATING CORP			BURNHAM GRAYBURG SAN ANDRES UNIT											
30-015-04044	CORP	EDDY	S:2, T:17S, R:30E	BURNHAM GRAYBURG SAN ANDRES UNIT	001A	9/1/2002			No	link		I	Flowing		TEMP364041299
	CBS OPERATING CORPORATION or CBS OPERATING CORP			BURNHAM GRAYBURG SAN ANDRES UNIT											
30-015-04050	CORP	EDDY	S:2, T:17S, R:30E	BURNHAM GRAYBURG SAN ANDRES UNIT	002B	9/1/2002			No	link	3,207	O	Active	WellLog	TEMP691847362
	CBS OPERATING CORPORATION or CBS OPERATING CORP			BURNHAM GRAYBURG SAN ANDRES UNIT											
30-015-04051	CORP	EDDY	S:2, T:17S, R:30E	BURNHAM GRAYBURG SAN ANDRES UNIT	003B	9/1/2002			No	link		O	Active		TEMP1059667310
	CBS OPERATING CORPORATION or CBS OPERATING CORP														
30-015-04065	CORP	EDDY	S:3, T:17S, R:30E	FEDERAL KK	002	9/1/2002	0		No	link	3,050	O	Shut-in	WellLog	TEMP78942364
	CBS OPERATING CORPORATION or CBS OPERATING CORP														
30-015-04066	CORP	EDDY	S:3, T:17S, R:30E	FEDERAL KK	003	9/1/2002			No	link	3,008	O	Flowing	WellLog	TEMP45716280
	CBS OPERATING CORPORATION or CBS OPERATING CORP														
30-015-04067	CORP	EDDY	S:3, T:17S, R:30E	FEDERAL KK	004	9/1/2002			No	link	3,375	O	Shut-in	WellLog	TEMP281705034
	CBS OPERATING CORPORATION or CBS OPERATING CORP														
30-015-04115	CORP	EDDY	S:10, T:17S, R:30E	FEDERAL R	001	9/1/2002			No	link		O	Active		TEMP463953658
	CBS OPERATING CORPORATION or CBS OPERATING CORP														
30-015-04170	CORP	EDDY	S:10, T:17S, R:30E	FEDERAL R	002	9/1/2002			No	link	3,254	O	Active	WellLog	TEMP1765666218
	CBS OPERATING CORPORATION or CBS OPERATING CORP														
30-015-04171	CORP	EDDY	S:10, T:17S, R:30E	FEDERAL R	003	9/1/2002			No	link	2,982	O	Active	WellLog	TEMP1726806579
	CBS OPERATING CORPORATION or CBS OPERATING CORP														
30-015-20314	CORP	EDDY	S:3, T:17S, R:30E	FEDERAL JJ	002	9/1/2002			No	link		O	Injection Well		TEMP569296591

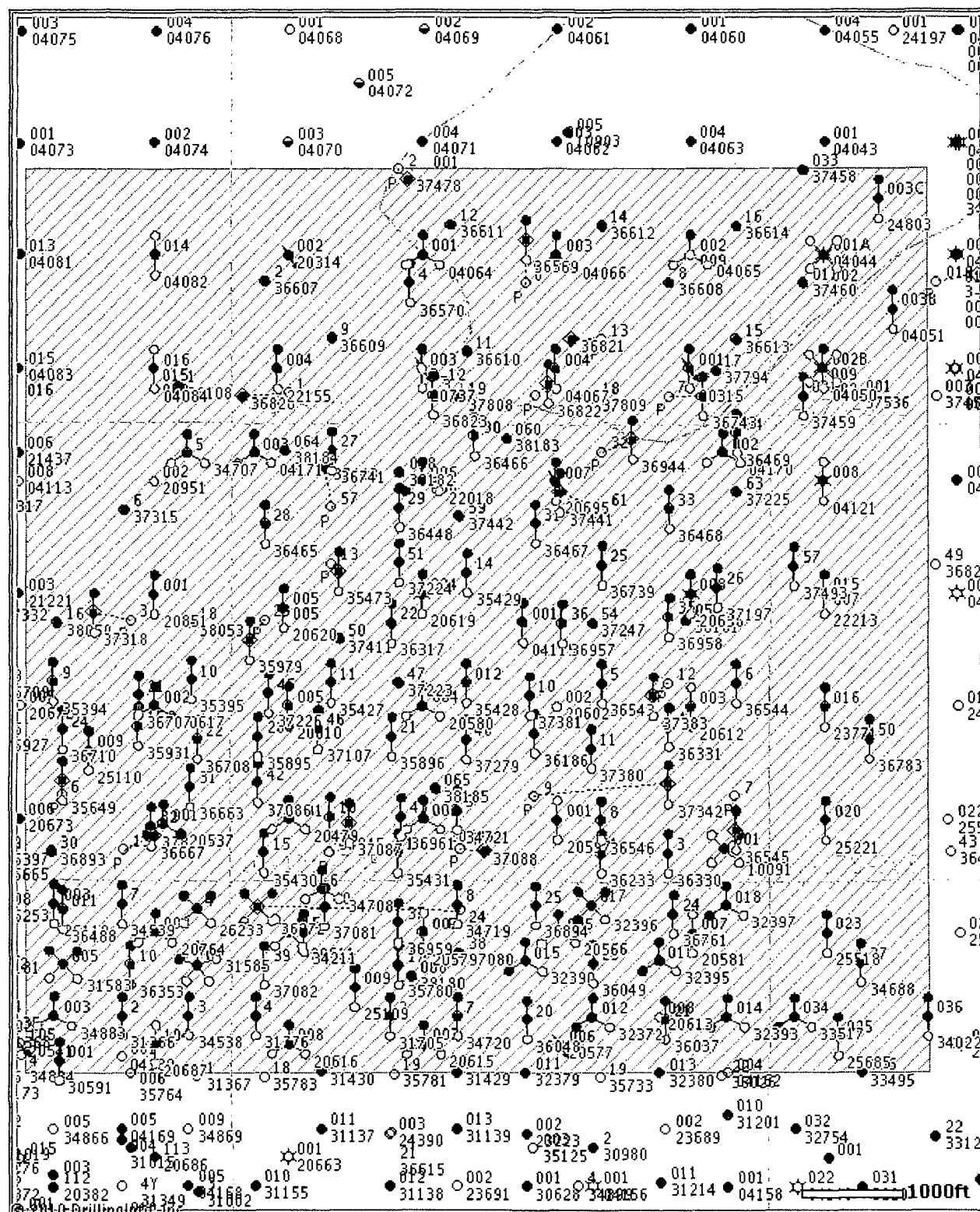
30-015-20315	CBS OPERATING CORPORATION or CBS OPERATING CORP	EDDY	S:3, T:17S, R:30E	FEDERAL KK	001	9/1/2002			No	link		I	Injection Well	TEMP306513093
30-015-20479	CBS OPERATING CORPORATION or CBS OPERATING CORP	EDDY	S:10, T:17S, R:30E	LOCO HILLS A FEDERAL	001	9/1/2002			No	link		O	Active	TEMP1446556138
30-015-20536	CBS OPERATING CORPORATION or CBS OPERATING CORP	EDDY	S:10, T:17S, R:30E	LOCO HILLS A FEDERAL	002	9/1/2002			No	link	2,917	O	Flowing	WellLog TEMP1525414338
30-015-20580	CBS OPERATING CORPORATION or CBS OPERATING CORP	EDDY	S:10, T:17S, R:30E	LOCO HILLS A FEDERAL	004	9/1/2002			No	link		O	Active	TEMP1149884088
30-015-20610	CBS OPERATING CORPORATION or CBS OPERATING CORP	EDDY	S:10, T:17S, R:30E	LOCO HILLS A FEDERAL	005	9/1/2002	0		No	link	2,893	PI	Flowing	WellLog TEMP650356016
30-015-20611	CBS OPERATING CORPORATION or CBS OPERATING CORP	EDDY	S:15, T:17S, R:30E	LOCO HILLS A FEDERAL	006	9/1/2002			No	link	3,525	O	Flowing	WellLog TEMP758470457
30-015-20615	CBS OPERATING CORPORATION or CBS OPERATING CORP	EDDY	S:15, T:17S, R:30E	LOCO HILLS A FEDERAL	007	9/1/2002			No	link	2,902	G	Flowing	WellLog TEMP167604821
30-015-20616	CBS OPERATING CORPORATION or CBS OPERATING CORP	EDDY	S:15, T:17S, R:30E	LOCO HILLS A FEDERAL	008	9/1/2002			No	link	2,858	O	Shut-in	WellLog TEMP141057147
30-015-20617	CBS OPERATING CORPORATION or CBS OPERATING CORP	EDDY	S:9, T:17S, R:30E	LOCO HILLS B FEDERAL	002	9/1/2002			No	link	2,878	O	Active	WellLog TEMP414613615
30-015-20619	CBS OPERATING CORPORATION or CBS OPERATING CORP	EDDY	S:10, T:17S, R:30E	FEDERAL R	004	9/1/2002			No	link	2,970	G	Flowing	WellLog TEMP388450690
	CBS OPERATING													

30-015-20620	CORPORATION or CBS OPERATING CORP	EDDY	S:10, T:17S, R:30E	FEDERAL R	005	9/1/2002		No	link	2,950	O	Active	WellLog	TEMP263407298
30-015-20695	CBS OPERATING CORPORATION or CBS OPERATING CORP	EDDY	S:10, T:17S, R:30E	FEDERAL R	007	9/1/2002		No	link	3,160	I	Injection Well	WellLog	TEMP1344858429
30-015-20696	CBS OPERATING CORPORATION or CBS OPERATING CORP	EDDY	S:10, T:17S, R:30E	FEDERAL R	008	9/1/2002		No	link	3,200	G	Flowing	WellLog	TEMP1476057804
30-015-20737	CBS OPERATING CORPORATION or CBS OPERATING CORP	EDDY	S:3, T:17S, R:30E	FEDERAL JJ	003	9/1/2002		No	link	2,700	I	Injection Well	WellLog	TEMP1156794244
30-015-22018	CBS OPERATING CORPORATION or CBS OPERATING CORP	EDDY	S:10, T:17S, R:30E	FEDERAL R	006	9/1/2002		No	link	3,195	O	Active	WellLog	TEMP293792594
30-015-24803	CBS OPERATING CORPORATION or CBS OPERATING CORP	EDDY	S:2, T:17S, R:30E	BURNHAM GRAYBURG SAN ANDRES UNIT	003C	9/1/2002		No	link	3,250	PO	Pumping	WellLog	TEMP1166234533
30-015-25109	CBS OPERATING CORPORATION or CBS OPERATING CORP	EDDY	S:15, T:17S, R:30E	LOCO HILLS A FEDERAL	009	9/1/2002		No	link	3,060	PO	Active	WellLog	TEMP747783976
30-015-25110	CBS OPERATING CORPORATION or CBS OPERATING CORP	EDDY	S:9, T:17S, R:30E	LOCO HILLS B FEDERAL	009	9/1/2002		No	link	3,040	PO	Shut-in	WellLog	TEMP760480689
30-015-22155	CBS OPERATING CORPORATION or CBS OPERATING CORP	EDDY	S:3, T:17S, R:30E	FEDERAL JJ	004	9/1/2002		No	link		O	Active		TEMP64668702
30-015-32396	PREMIER OIL & GAS INC or PREMIER OIL & GAS, INC.	EDDY	S:15, T:17S, R:30E	DALE H. PARKE "B" TR C	17	7/29/2002	6,000	No	link	5,010	O	Active	Completion	TEMP952075478
30-015-32395	PREMIER OIL & GAS INC or PREMIER OIL & GAS, INC.	EDDY	S:15, T:17S, R:30E	DALE H. PARKE "B" TR C	16	7/29/2002	6,000	No	link	5,050	O	Active	Completion	TEMP1667828325
	PREMIER OIL &													

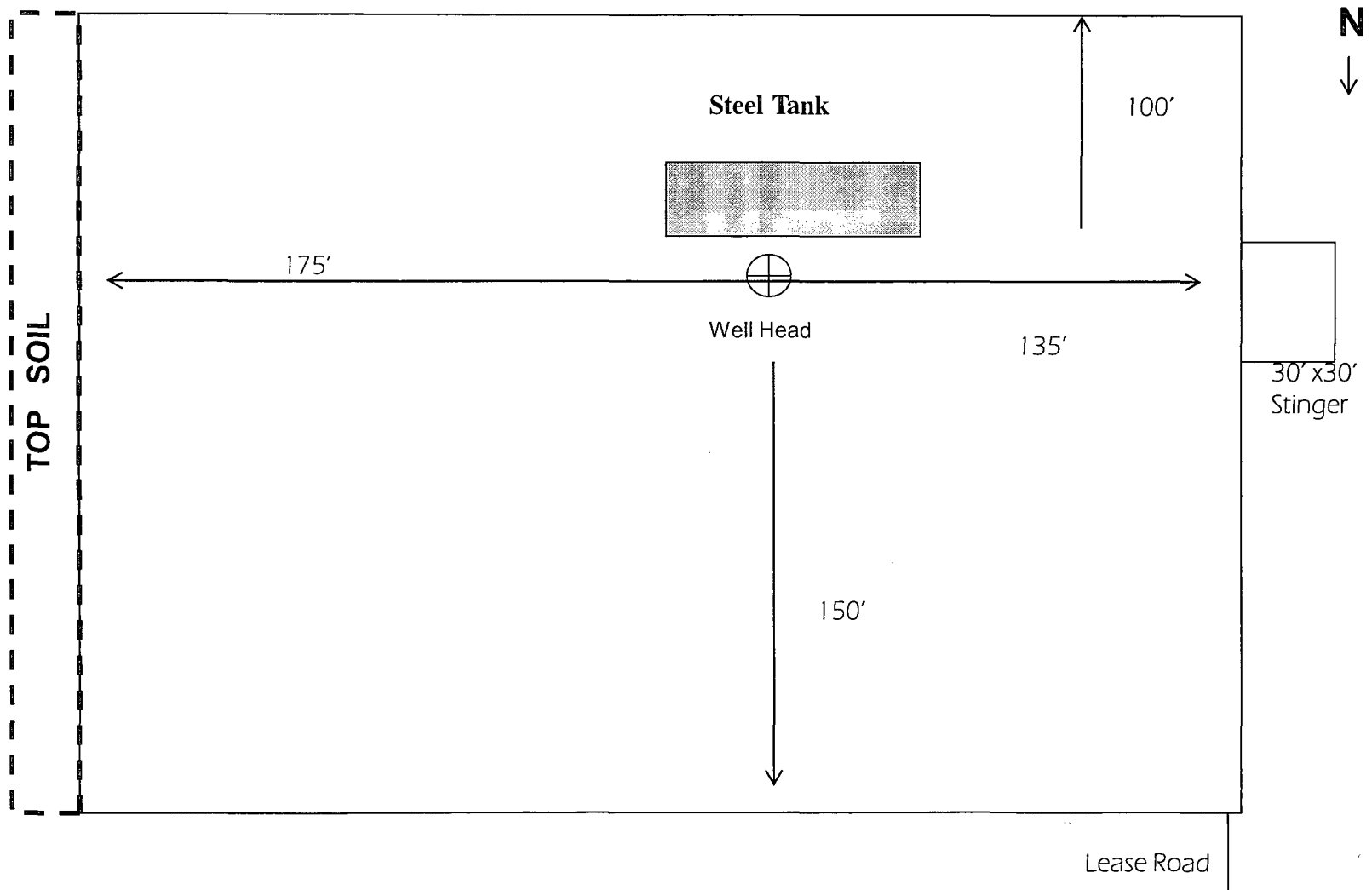
30-015-32397	GAS INC or PREMIER OIL & GAS, INC.	EDDY	S:15, T:17S, R:30E	DALE H. PARKE "B" TR C	18	7/29/2002	6,000	No	link	5,030	O	Active	Completion	TEMP747206285
30-015-32390	PREMIER OIL & GAS INC or PREMIER OIL & GAS, INC.	EDDY	S:15, T:17S, R:30E	DALE H PARKE B TRACK C	015	7/26/2002	6,000	No	link	5,041	O	Active	Completion	TEMP16896062
30-015-32393	PREMIER OIL & GAS INC or PREMIER OIL & GAS, INC.	EDDY	S:15, T:17S, R:30E	DALE H. PARKE "B" TR C	14	7/24/2002	6,000	No	link	5,005	O	Active	Completion	TEMP1208056916
30-015-32372	PREMIER OIL & GAS INC	EDDY	S:15, T:17S, R:30E	DALE H. PARKE B TRACT C	012	7/10/2002	6,000	No	link	5,018	O	Active	Completion	TEMP393318239
30-015-32395	PREMIER OIL & GAS INC	EDDY	S:15, T:17S, R:30E	D H PARKE B TRACT C	016	6/30/2002		No	link	5,050	O	Active	Completion	TEMP1613213300
30-015-31776	MACK ENERGY CORP	EDDY	S:15, T:17S, R:30E	ELECTRA FEDERAL	004	5/11/2001		No	link	6,057	O	Pumping	Completion	TEMP1079717175
30-015-31705	MACK ENERGY CORP	EDDY	S:15, T:17S, R:30E	ELECTRA FEDERAL	003	4/9/2001		No	link	4,925	O	Pumping	Completion	TEMP1529680513
30-015-31583	MACK ENERGY CORP	EDDY	S:16, T:17S, R:30E	TEXACO BE	005	1/30/2001		Yes	link	5,982	O	Pumping	Completion	TEMP1698500676
30-015-31585	MACK ENERGY CORP	EDDY	S:16, T:17S, R:30E	TEXACO BE	006	1/30/2001		No	link	4,913	PO	Pumping	Completion	TEMP1368001371
30-015-31366	MACK ENERGY CORP	EDDY	S:16, T:17S, R:30E	MESILLA STATE	002	10/9/2000		No	link	4,925	O	Pumping	Completion	TEMP1693052895
30-015-30591	MACK ENERGY CORP	EDDY	S:16, T:17S, R:30E	PAWNEE STATE	001	3/16/1999		No	link	4,860	O	Pumping	Completion	TEMP1023303344
30-015-26233	MACK ENERGY CORP	EDDY	S:16, T:17S, R:30E	TEXACO BE	004	1/1/1990		No	link	4,970	O	Active	WellLog	TEMP371653078
30-015-26110	MACK ENERGY CORP	EDDY	S:16, T:17S, R:30E	TEXACO BE	003	8/1/1989		No	link	5,530	PO	Shut-in	WellLog	TEMP1271978899
30-015-25685	BURNETT OIL CO INC	EDDY	S:14, T:17S, R:30E	GISSLER B(A-2)	025	4/1/1987	0	No	link	3,517	O	Pumping	WellLog	TEMP1202831366
30-015-25518	BURNETT OIL CO INC	EDDY	S:14, T:17S, R:30E	GISSLER B	023	4/1/1986		No	link	3,549	PI	Flowing	WellLog	TEMP271187643
30-015-25221	BURNETT OIL CO INC	EDDY	S:11, T:17S, R:30E	GISSLER B	020	7/1/1985		No	link	3,520	PO	Pumping	WellLog	TEMP1961312655
30-015-23771	BURNETT OIL CO INC	EDDY	S:11, T:17S, R:30E	GISSLER B	016	6/1/1982		No	link	3,205	PI	Flowing	WellLog	TEMP1075649976
30-015-22213	BURNETT OIL CO INC	EDDY	S:11, T:17S, R:30E	GISSLER B	015	10/1/1977	0	No	link	3,170	O	Pumping	WellLog	TEMP1383189944
30-015-20851	SEELY OIL CO	EDDY	S:9, T:17S, R:30E	ARCO FEDERAL	001	11/1/1973	0	No	link	2,880	O	Active	WellLog	TEMP232211988
30-015-20764	MACK ENERGY CORP	EDDY	S:16, T:17S, R:30E	TEXACO BE	002	11/9/1972	3,950	No	link	3,950	O	Pumping	WellLog	TEMP1446879590
30-015-20537	ANADARKO PETROLEUM CORP	EDDY	S:9, T:17S, R:30E	LOCO HOLLS B FEDERAL	001	9/22/1972	2,862	Yes	link	2,872	PO	Injection Well	WellLog	TEMP1176830929
30-015-20566	PREMIER OIL & GAS INC	EDDY	S:15, T:17S, R:30E	DALE H PARKE B	005	1/10/1972	3,450	No	link	3,450	O	Pumping	Permit	TEMP1844740601
30-015-20537	CBS OPERATING CORPORATION or CBS OPERATING CORP	EDDY	S:9, T:17S, R:30E	LOCO HILLS B FEDERAL	001	11/16/1971	2,900	Yes	link	2,872	PO	Injection Well	WellLog	TEMP1400755695
	STEVENS OPERATING													

30-015-20694	CORPORATION or HANAGAN PETROLEUM CORP	EDDY	S:10, T:17S, R:30E	PRE-ONGARD WELL	006	1/1/1970			No	link		PO	Active Permit		TEMP500241086
--------------	--	------	--------------------	--------------------	-----	----------	--	--	----	------	--	----	---------------	--	---------------

Offset Wells to Electra Federal #52



© 2010 Drilling Info, Inc. All rights reserved. All data and information is provided "As Is" and subject to the DI subscription agreement.



Not To Scale

COG OPERATING LLC
Rig Layout-Closed Loop
System Electra Federal 52

