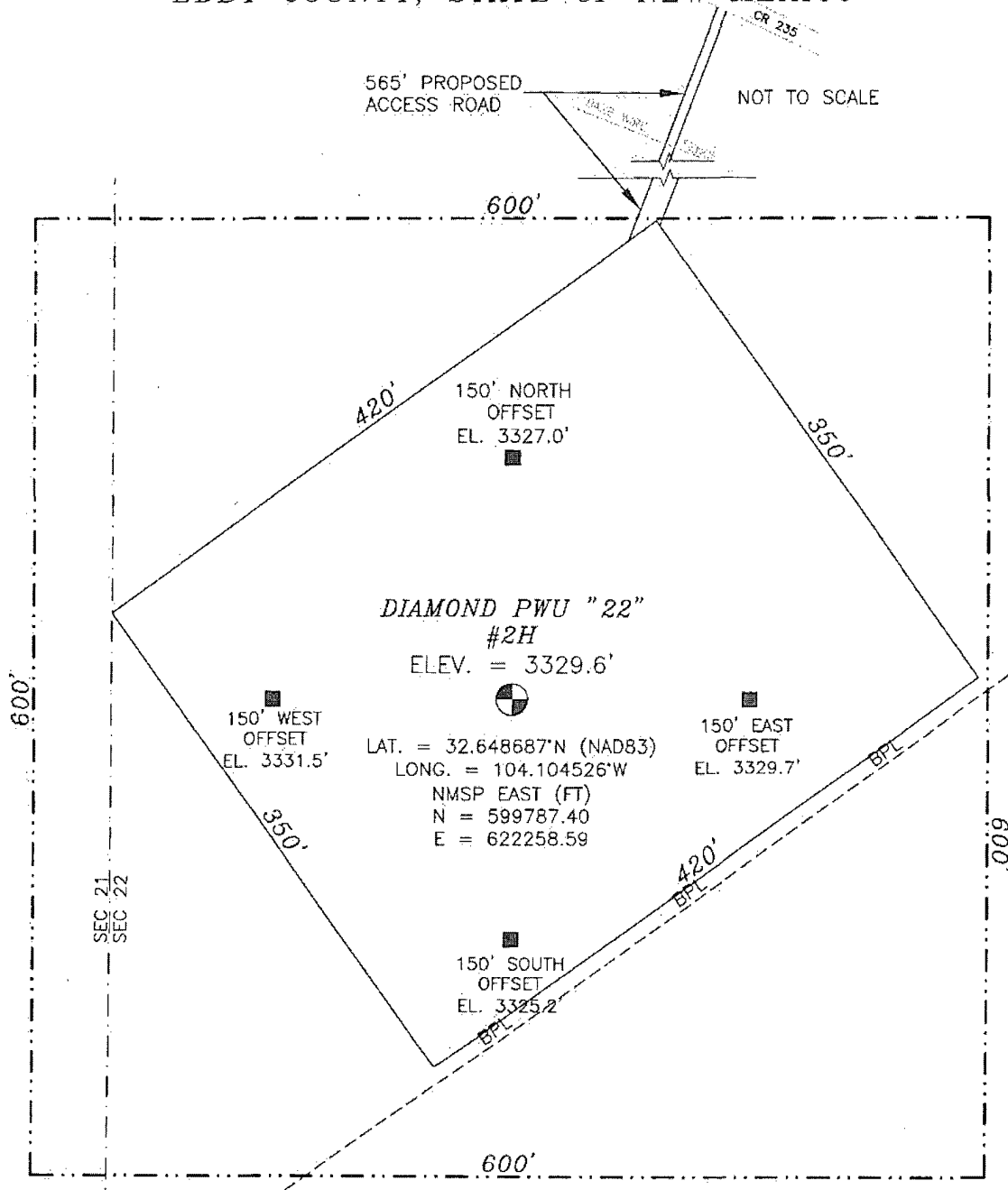


SECTION 22, TOWNSHIP 19 SOUTH, RANGE 29 EAST, N.M.P.M.
 EDDY COUNTY, STATE OF NEW MEXICO



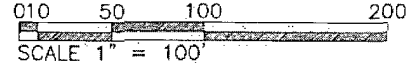
DIAMOND PWU "22"
#2H
 ELEV. = 3329.6'

LAT. = 32.648687°N (NAD83)
 LONG. = 104.104526°W
 NMSP EAST (FT)
 N = 599787.40
 E = 622258.59

150' WEST
 OFFSET
 EL. 3331.5'

150' EAST
 OFFSET
 EL. 3329.7'

150' SOUTH
 OFFSET
 EL. 3325.2'



DIRECTIONS TO LOCATION
 FROM CR 235 (CURRY COMB) & CR 210 (OLD LOCO), GO
 SOUTHEAST 0.8 MILES TO A PROPOSED ROAD SURVEY AND FOLLOW
 FLAGS SOUTHWEST 565' TO THE NORTHEAST CORNER OF PROPOSED
 PAD FOR THIS LOCATION.

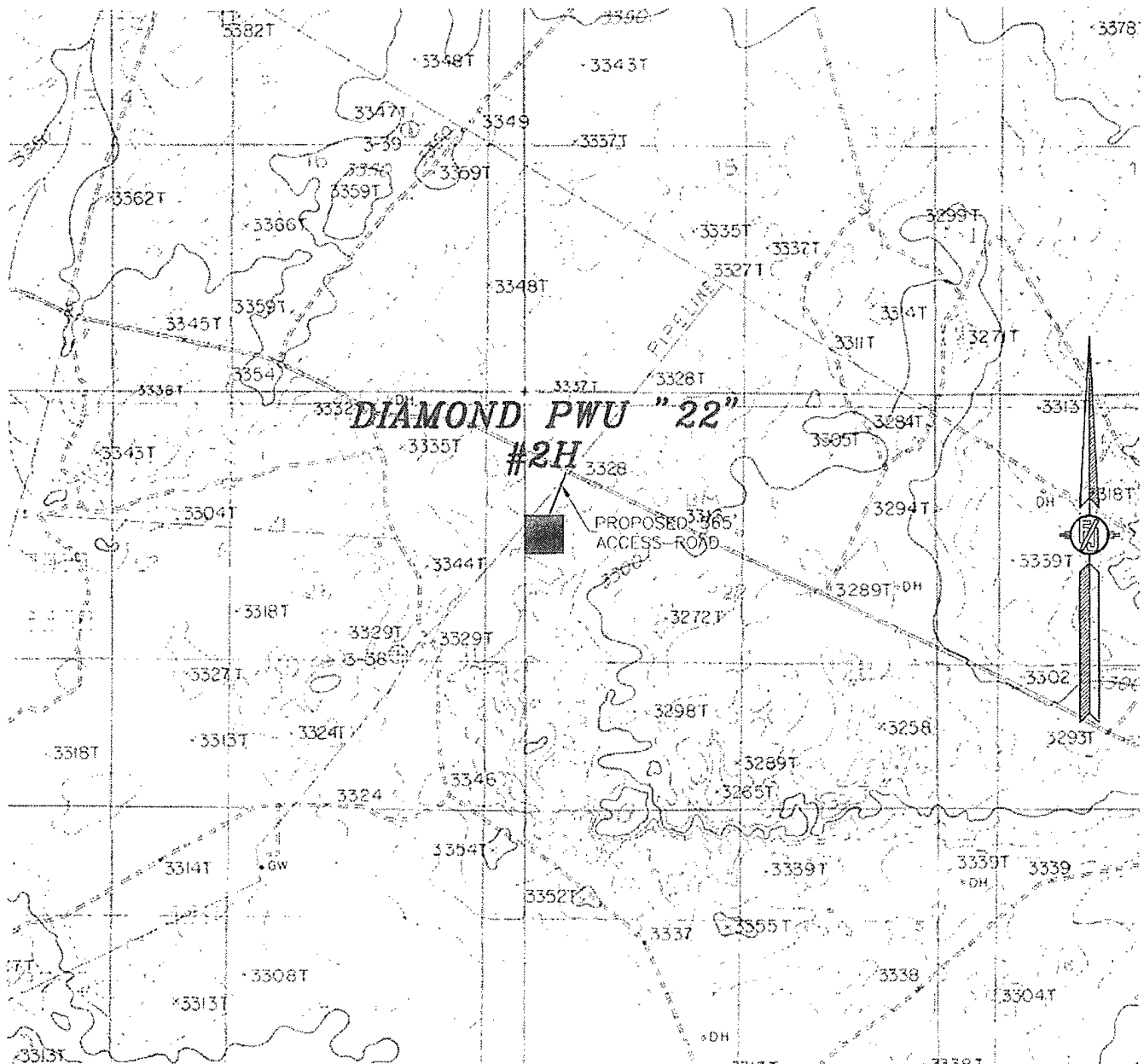
DEVON ENERGY PRODUCTION COMPANY, L.P.
DIAMOND PWU "22" #2H
 LOCATED 1800 FT. FROM THE NORTH LINE
 AND 250 FT. FROM THE WEST LINE OF
 SECTION 22, TOWNSHIP 19 SOUTH,
 RANGE 29 EAST, N.M.P.M.
 EDDY COUNTY, STATE OF NEW MEXICO

DECEMBER 16, 2010

SURVEY NO. 348

MADRON SURVEYING, INC. 301 SOUTH CANAL CARLSBAD, NEW MEXICO
 (575) 887-5830

SECTION 22, TOWNSHIP 19 SOUTH, RANGE 29 EAST, N.M.P.M.
 EDDY COUNTY, STATE OF NEW MEXICO
LOCATION VERIFICATION MAP



CONTOUR INTERVAL
 ILLINOIS CAMP NE

NOT TO SCALE

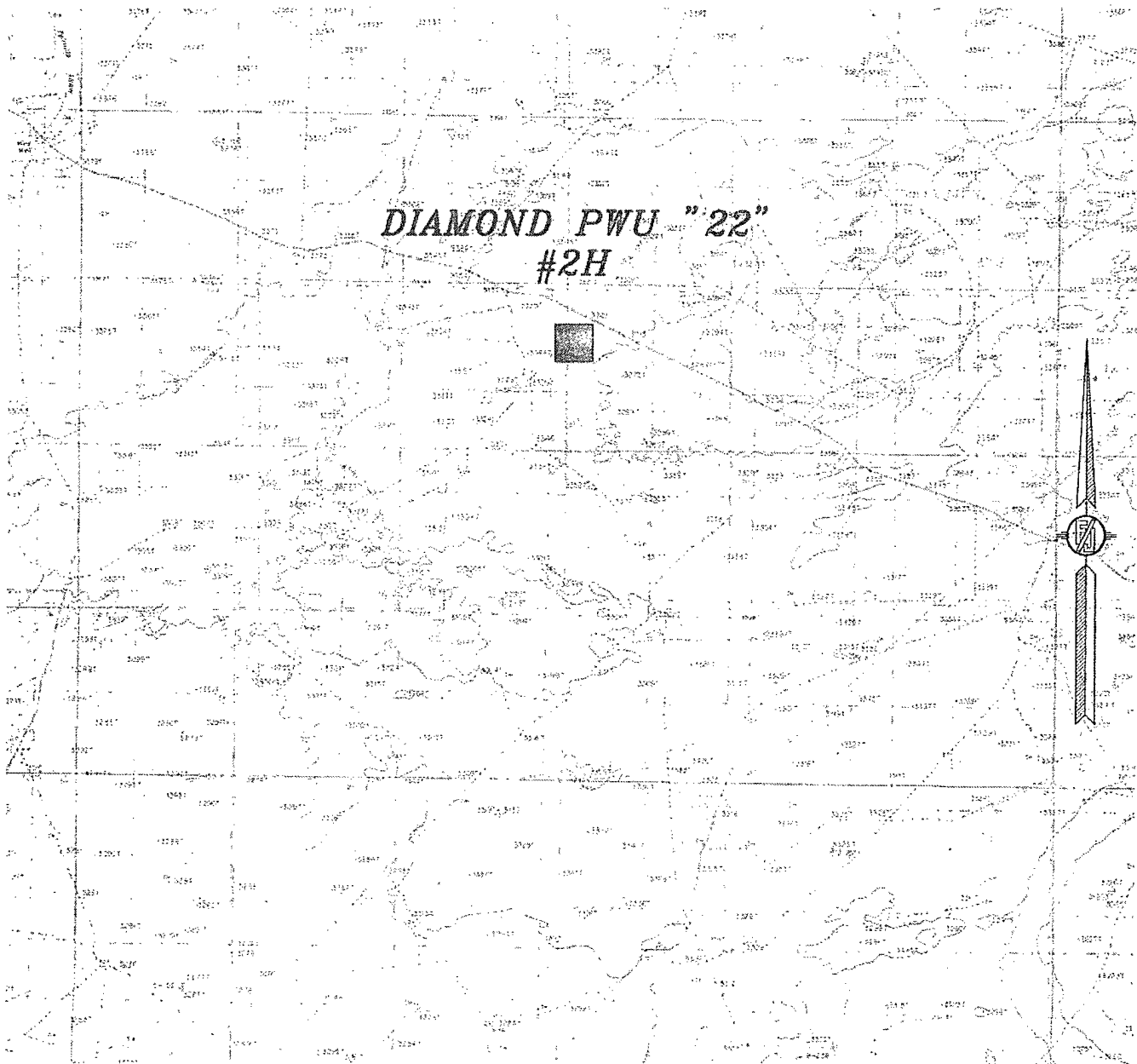
DEVON ENERGY PRODUCTION COMPANY, L.P.
DIAMOND PWU "22" #2H
 LOCATED 1800 FT. FROM THE NORTH LINE
 AND 250 FT. FROM THE WEST LINE OF
 SECTION 22, TOWNSHIP 19 SOUTH,
 RANGE 29 EAST, N.M.P.M.
 EDDY COUNTY, STATE OF NEW MEXICO

DECEMBER 16, 2010

SURVEY NO. 348

MADRON SURVEYING, INC. 301 SOUTH CANAL (575) 887-5830 CARLSBAD, NEW MEXICO

SECTION 22, TOWNSHIP 19 SOUTH, RANGE 29 EAST, N.M.P.M.
EDDY COUNTY, STATE OF NEW MEXICO
VICINITY MAP



**DIAMOND PWU "22"
#2H**

DEVON ENERGY PRODUCTION COMPANY, L.P. NOT TO SCALE
DIAMOND PWU "22" #2H
LOCATED 1800 FT. FROM THE NORTH LINE
AND 250 FT. FROM THE WEST LINE OF
SECTION 22, TOWNSHIP 19 SOUTH,
RANGE 29 EAST, N.M.P.M.
EDDY COUNTY, STATE OF NEW MEXICO

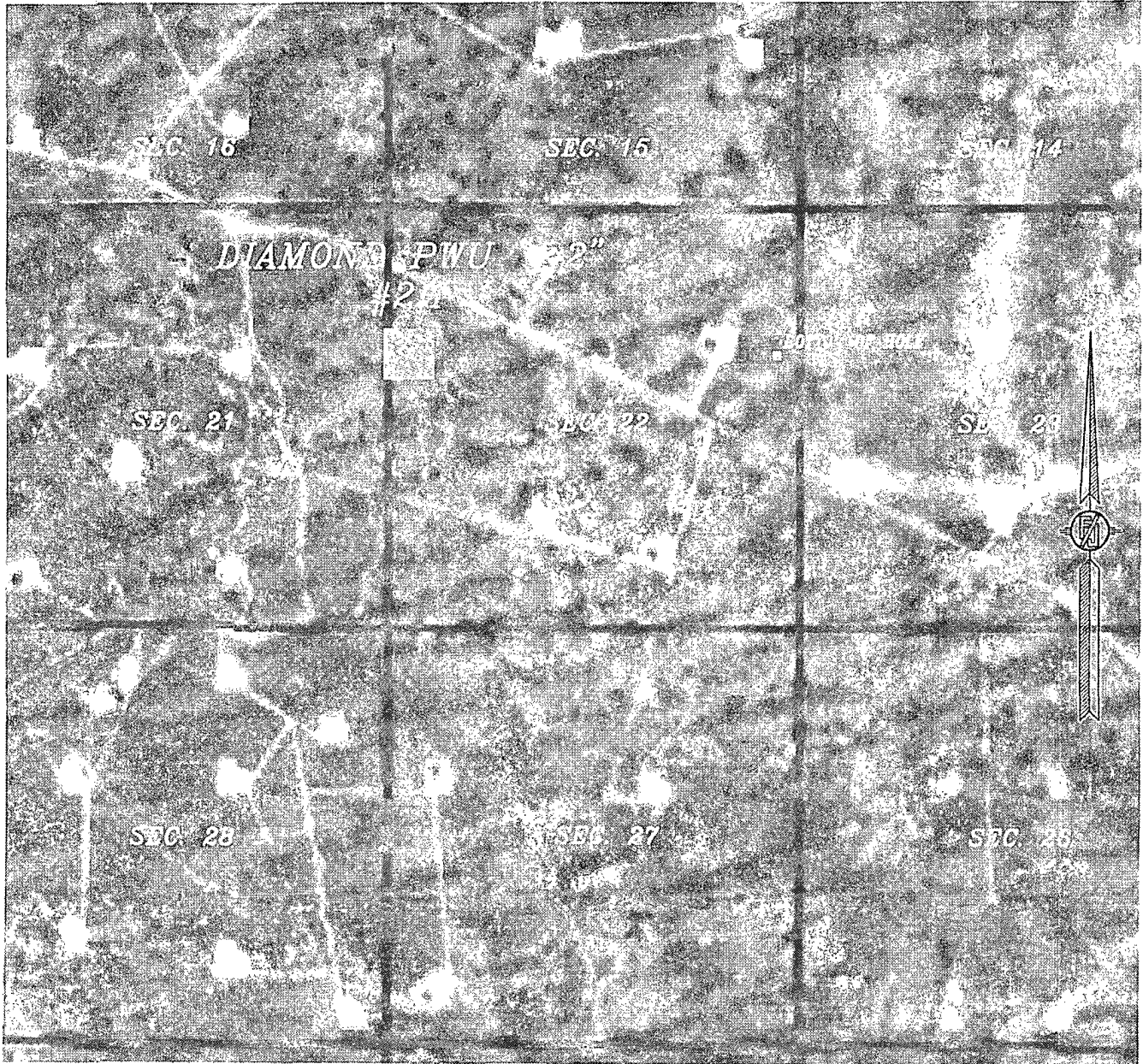
DECEMBER 16, 2010

SURVEY NO. 348

MADRON SURVEYING, INC. 301 SOUTH CANAL CARLSBAD, NEW MEXICO
(575) 857-5830

SECTION 22, TOWNSHIP 19 SOUTH, RANGE 29 EAST, N.M.P.M.
EDDY COUNTY, STATE OF NEW MEXICO

AERIAL MAP



NOT TO SCALE
AERIAL PHOTO:
GOOGLE EARTH
USDA - AUG, 2009

DEVON ENERGY PRODUCTION COMPANY, L.P.

DIAMOND PWU "22" #2H

LOCATED 1800 FT. FROM THE NORTH LINE
AND 250 FT. FROM THE WEST LINE OF
SECTION 22, TOWNSHIP 19 SOUTH,
RANGE 29 EAST, N.M.P.M.
EDDY COUNTY, STATE OF NEW MEXICO

DECEMBER 16, 2010

SURVEY NO. 348

MADRON SURVEYING, INC. 301 SOUTH CANAL CARLSBAD, NEW MEXICO
(575) 687-5830

SECTION LAND PLAT

County Eddy State New Mexico

Section 22 Township 19 S Range 29 E

Diamond PWU 22 2 H

SHL: 1800' FNL, 250' FWL / BHL: 1800' FNL, 330' FEL

SHL			BHL
State NM K0 4721	State NM L0 3099	State NM	K0 3830