

MULTI-POINT SURFACE USE AND OPERATIONS PLAN
YATES PETROLEUM CORPORATION
Lechuza "BQC" Federal #1H
480' FNL & 100' FEL, Surface Hole, Sec.35-26S-28E
480' FNL & 330' FWL, Bottom Hole, Sec. 35-26-28E
Eddy County, New Mexico
Surface Use Plan of Operations

30-015-38522

This plan is submitted with Form 3160-3, Application for Permit to Drill, covering the above described well. The purpose of this plan is to describe the location of the proposed well, the proposed construction activities and operations plan, the magnitude of the surface disturbance involved and the procedures to be followed in rehabilitating the surface after completion of the operations, so that a complete appraisal can be made of the environmental effect associated with the operations.

1. EXISTING ROADS:

Exhibit A is a portion of the BLM map showing the well and roads in the vicinity of the proposed location. The proposed well site is located approximately 16.5 miles southeast of Malaga, New Mexico and the access route to the location is indicated in red and green on Exhibit A.

DIRECTIONS: Go south out of Malaga, New Mexico on the Pecos Highway (285) for approximately 15.2 and there will be an old railroad bed, a gate, and a cattle guard. Turn right thru the gate and follow the railroad bed for about 0.3 of a mile and crossover the railroad bed and the road will turn NW. Go for about 0.5 of a mile and new road will start here and goes north for approximately to the Se corner of the pad. (Both the Buho State #1 and the Lechuza BQC Federal share this location and access road.)

2. PLANNED ACCESS ROAD:

- A. The proposed new access will be approximately 0.3 of a mile in length from the point of origin to the southeast corner of the drilling pad.
- B. The new road will be 14 feet in width (driving surface) and will be adequately drained to control runoff and soil erosion.
- C. The new road will be bladed with drainage on both sides. One traffic turnout may be needed.
- D. The route of the road is visible.
- E. Existing roads will be maintained in the same or better condition.

3. LOCATION OF EXISTING WELL:

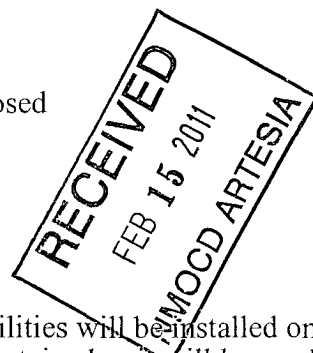
- A. There is drilling activity within a one-mile radius of the well site.
- B. Exhibit D shows existing wells within a one-mile radius of the proposed well site.

4. LOCATION OF EXISTING AND/OR PROPOSED FACILITIES:

- A. There are no production facilities on this lease at the present time.
- B. In the event that the well is productive, the necessary production facilities will be installed on the drilling pad. If the well is productive oil, a gas or diesel self-contained unit will be used to provide the necessary power until an electric line can be built, if needed.

5. LOCATION AND TYPE OF WATER SUPPLY:

- A. It is planned to drill the proposed well with a brine water system. The water will be obtained from commercial sources and will be hauled to the location by trucks over the existing and proposed roads shown in Exhibit A.



6. SOURCE OF CONSTRUCTION MATERIALS:

The dirt contractor will be responsible for finding a source of material for construction of road and pad and will obtain any permits that may be required.

7. METHODS OF HANDLING WASTE DISPOSAL:

- A. This well will be drilled with a closed loop system
- B. The closed loop system will be constructed, maintained, and closed in compliance with the State of New Mexico, Energy and Natural Resources Department, Oil Conservation Division – the “Pit Rule” 19.15.17 NMAC.
- C. Drilling fluids will be removed after drilling and completions are completed.
- D. Water produced during operations will be collected in tanks until hauled to an approved disposal system, or separate disposal application will be submitted.
- E. Oil produced during operations will be stored in tanks until sold.
- F. Current laws and regulations pertaining to the disposal of human waste will be complied with.
- G. All trash, junk, and other waste materials will be contained in trash cages or bins to prevent scattering and will be removed and deposited in an approved sanitary landfill. Burial on site is not approved.

8. ANCILLARY FACILITIES: NONE

9. WELLSITE LAYOUT:

- A. Exhibit C shows the relative location and dimensions of the well pad, the closed loop system, the location of the drilling equipment, drilling rig orientation and access road approach.
- B. The closed loop system will be constructed, maintained, and closed in compliance with the State of New Mexico, Energy and Natural Resources Department, Oil Conservation Division – the “Pit Rule” 19.15.17 NMAC.
- C. A 600' x 600' area has been staked and flagged.

10. PLANS FOR RESTORATION:

- A. After finishing drilling and/or completion operations, all equipment and other material not needed for further operations will be removed. The location will be cleaned of all trash and junk to leave the well site in as aesthetically pleasing a condition as possible.
- B. Unguarded pits, if any, containing fluids will be fenced until they have dried and have been leveled.
- C. If the proposed well is plugged and abandoned, all rehabilitation and/or vegetation requirements of the Bureau of Land Management will be complied with and will be accomplished as expeditiously as possible.
- D. See attached plans for interim and final reclamation.

11. SURFACE OWNERSHIP:

Federal Lands under the supervision of the Carlsbad BLM.

12. OTHER INFORMATION:

- A. The primary use of the surface is for grazing.
- B. Refer to the archaeological report for a description of the topography, flora, fauna, soil characteristics, dwellings, and historical and cultural sites.

CERTIFICATION
YATES PETROLEUM CORPORATION
Lechuza BQC Federal #1H

I hereby certify that I, or someone under my direct supervision, have inspected the drill site and access route proposed herein; that I am familiar with the conditions which currently exist; and an someone under employment of Yates Petroleum Corporation has full knowledge of state and federal laws applicable to this operation; that the statements made in this APD package are, to the best of my knowledge, true and correct; and that the work associated with the operations proposed herein will be performed in conformity with this APD package and the terms and conditions under which it is approved. I also certify that I, or the company I represent, am responsible for the operations conducted under this application. These statements are subject to the provisions of 18 U.S.C. 1001 for the filing of false statements.

Executed this 13th day of October 2010

Signature Clifton May

Name Clifton May

Position Title Land Regulatory Agent

Address 105 South Fourth Street, Artesia, New Mexico 88210

Telephone (505) 748-4372

Field Representative (if not above signatory) Tim Bussell, Drilling Supervisor

Address (if different from above) Same as above.

Telephone (if different from above) (505) 748-4221

E-mail (optional)

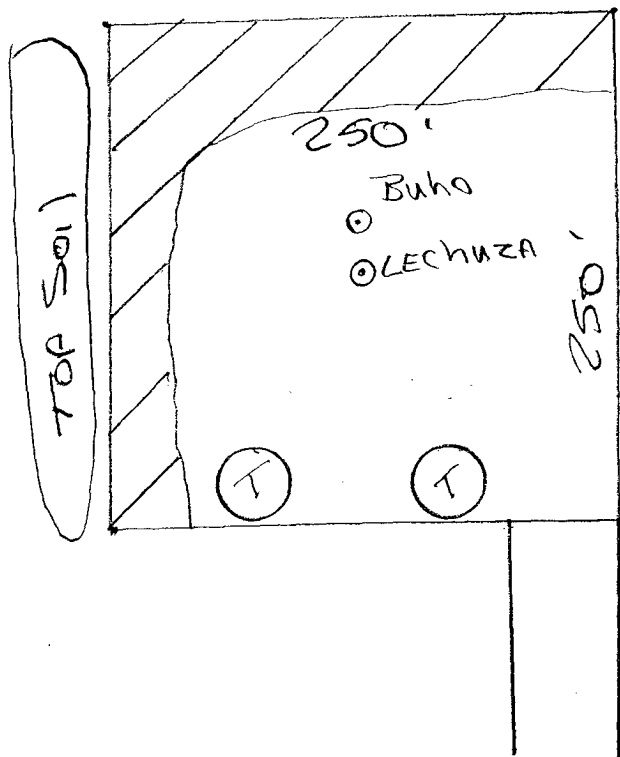
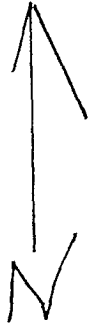
YATES PETROLEUM CORPORATION

Lechuza BQC Federal #1H
480' FNL and 100' FEL
Unit A, Section 35, T26S-R28E
Eddy County, New Mexico

Plans for Interim and Final Surface Reclamation.

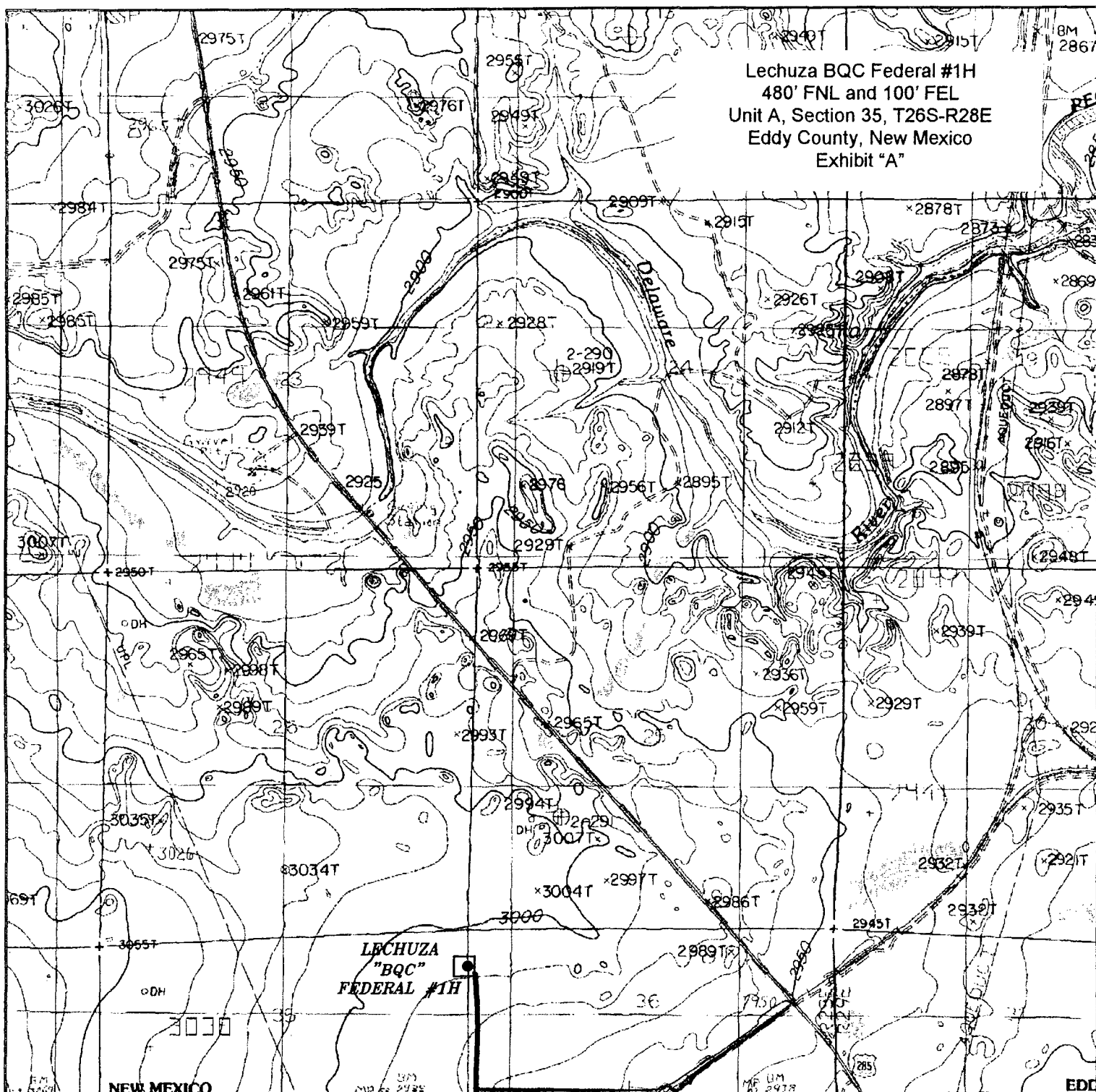
1. Well location will be contoured to resemble the original topography as closely as possible. Surface reclamation measures will be taken to avoid new erosion on the well location and the area surrounding the well location. These measures will be overseen by Yates' personnel following a structured plan for the reclamation of each individual site.
2. Major drainage systems will be avoided as determined at the onsite with the BLM. Minor drainages may be rerouted around the well site within the 600' x 600' cleared area to avoid moving the well location.
3. Segregation of topsoil or like soils will be placed in low lift rows rather than in a stockpile just off the caliche well pad. Placement of these lift rows will be determined at the BLM onsite or at the time of construction by Yates Personnel.
4. Yates will use prudent oil field practices when constructing well locations and related facilities. Yates personnel will determine the size of the well location needed for safe working conditions for personnel during all aspects on the drilling and production process.
5. Back fill requirements for above ground reserve pits will be met by using cut, fill, and contouring of available top soil and like soils from the pit area. Should additional material be needed it will be brought in from a BLM approved source.
6. All topsoil will be spread over the area reclaimed during interim reclamation using a front end loader. For final reclamation enough topsoil will be evenly distributed between the interim reclaimed area and the final reclaimed area. This method of soil stabilization should help maintain the productivity and viability of the topsoil.
7. Soil treatments will be determined at the time of final reclamation by Yates' Environmental Specialist or other designated personnel to meet BLM final reclamation goals.
8. Reseeding of disturbed areas will be accordance with the seed mixtures attached to the approved APD as Conditions of Approval. Planting and soil preparation will be done during the rainy season between June 1st and September 1st.
9. Yates' personnel will control weeds during the productive period through final abandonment of the well. Yates may also use the option to hire a third party to be in charge of weed control or participate in the Chaves Soil and Water District program to pool monies for weed control.
10. Well pads, roads and related facilities with caliche or other surfacing material will be picked up or turned over at the time of final abandonment. These materials may be used on other projects in the area if possible or placed back in the caliche pit or other designated site. Buried pipelines will be left in place after being bled down and purged. Above surface support equipment will be removed or cut down below plow depth and removed. Pipeline right-of-ways will be reseeded according to BLM Best Management Practices.

Lechuza BQC Federal #1H
480' FNL and 100' FEL
Unit A, Section 35, T26S-R28E
Eddy County, New Mexico
Exhibit F



POSSIBLE Reclamation
AND TANK BATTER LOCATION
Subject to Change

NOT TO SCALE



LECHUZA "BQC" FEDERAL #1H
 Located 480' FNL and 100' FEL
 Section 35, Township 26 South, Range 28 East,
 N.M.P.M., Eddy County, New Mexico.

basin
surveys
 focused on excellence
 in the oilfield

P.O. Box 1786
 1120 N. West County Rd.
 Hobbs, New Mexico 88241
 (575) 393-7316 - Office
 (575) 392-2206 - Fax
 basinsurveys.com

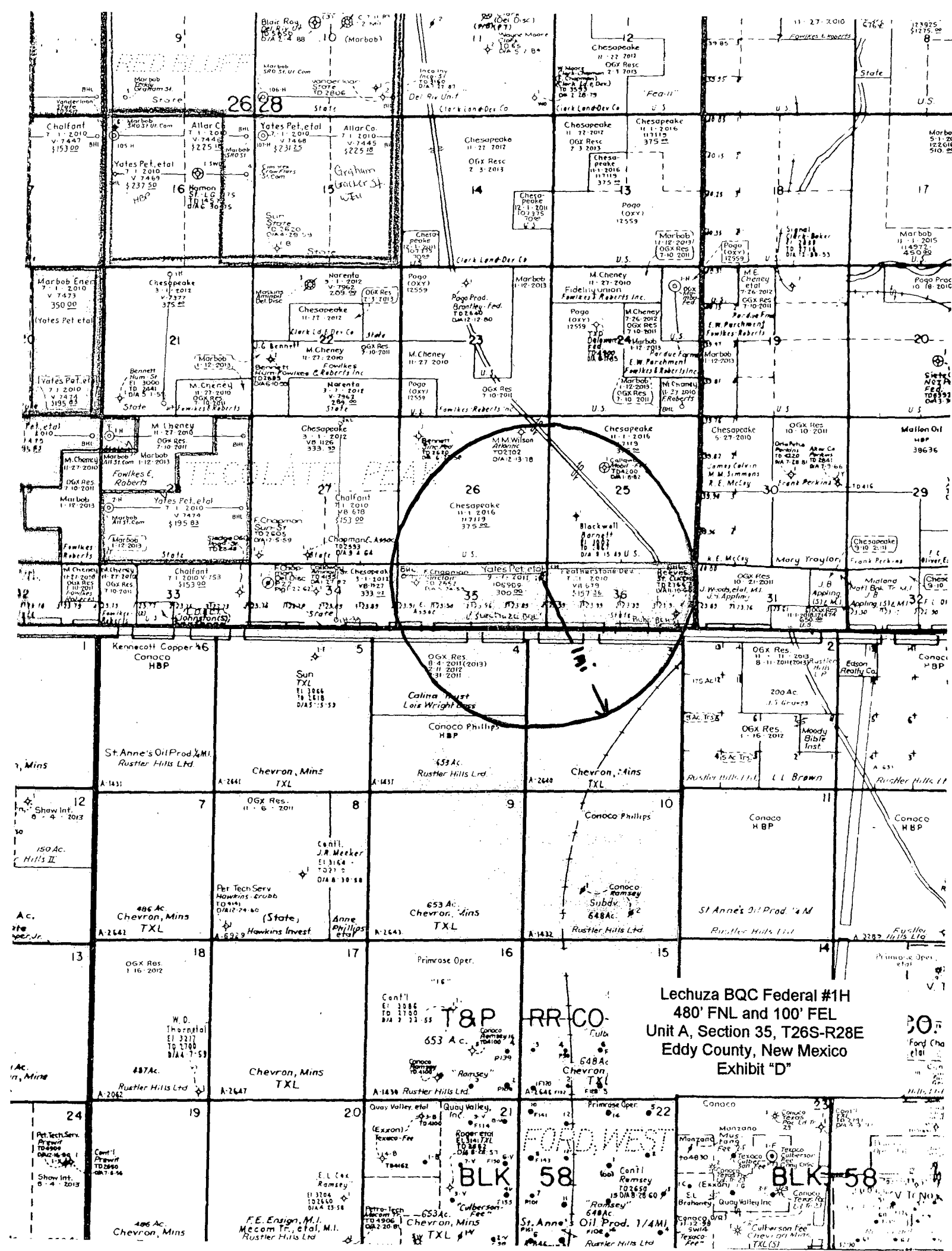
W.O. Number: JMS 23161

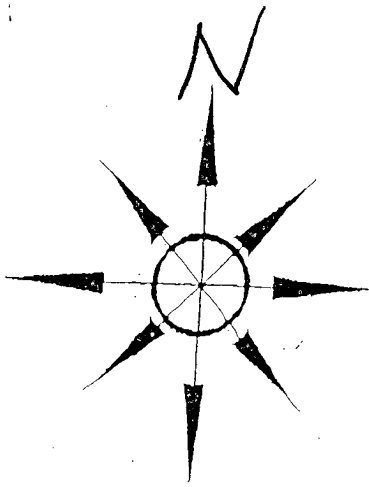
Survey Date: 07-27-2010

Scale: 1" = 2000'

Date: 07-28-2010

YATES
PETROLEUM
CORP.





Yates Petroleum Corporation
Location Layout for Permian Basin

Closed Loop Design Plan

Lechuza BQC Federal #1H
480' FNL and 100' FEL
Unit A, Section 35, T26S-R28E
Eddy County, New Mexico
Exhibit "C"

* NOT TO SCALE

