

DISTRICT I  
1625 N. FRENCH DR., HOBBS, NM 68240

DISTRICT II  
1301 W. GRAND AVENUE, ARTESIA, NM 68210

DISTRICT III  
1000 Rio Brazos Rd., Aztec, NM 87410

DISTRICT IV  
1220 S. ST. FRANCIS DR., SANTA FE, NM 87505

State of New Mexico  
Energy, Minerals and Natural Resources Department

OIL CONSERVATION DIVISION  
1220 SOUTH ST. FRANCIS DR.  
Santa Fe, New Mexico 87505

REC'D/MIDLAND

DEC 07 2009 Form C-102

Revised October 12, 2005  
Submit to Appropriate District Office  
State Lease - 4 Copies  
Fee Lease - 3 Copies

WELL LOCATION AND ACREAGE DEDICATION PLAT

☐ AMENDED REPORT

API Number <b>30-015-38544</b>	Pool Code <b>64453</b>	Pool Name <b>Willow Lake, Delaware</b>
Property Code <b>38531</b>	Property Name <b>GOLDENCHILD 6 STATE</b>	Well Number <b>1</b>
UGRID No. <b>005380</b>	Operator Name <b>XTO ENERGY</b>	Elevation <b>2891'</b>

Surface Location

UL or lot No.	Section	Township	Range	Lot Idn	Feet from the	North/South line	Feet from the	East/West line	County
1	6	25-S	29-E		2080	SOUTH	990	EAST	EDDY

Bottom Hole Location If Different From Surface

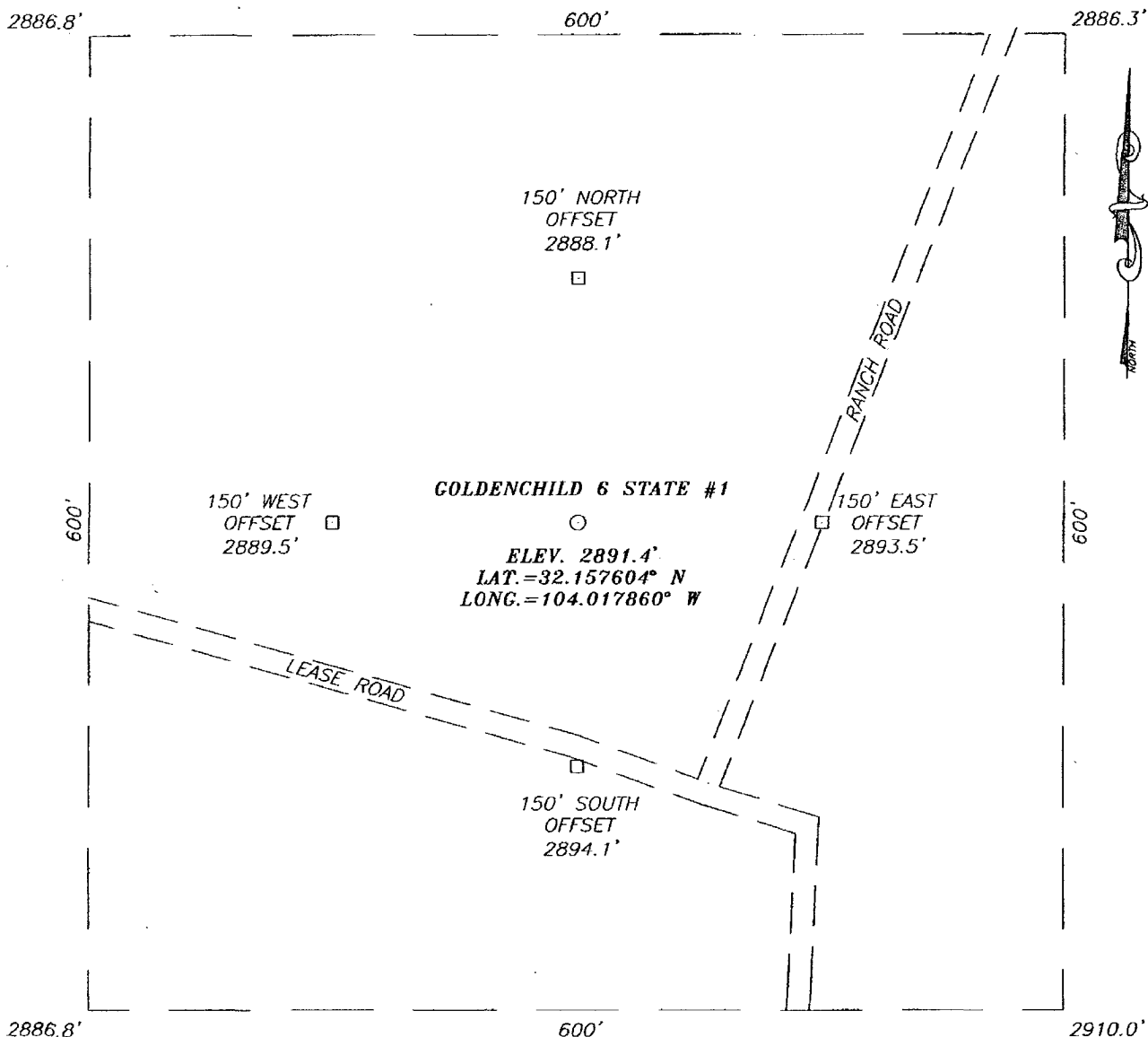
UL or lot No.	Section	Township	Range	Lot Idn	Feet from the	North/South line	Feet from the	East/West line	County
Dedicated Acres <b>40</b>		Joint or Infill		Consolidation Code		Order No.			

NO ALLOWABLE WILL BE ASSIGNED TO THIS COMPLETION UNTIL ALL INTERESTS HAVE BEEN CONSOLIDATED  
OR A NON-STANDARD UNIT HAS BEEN APPROVED BY THE DIVISION

LOT 4	LOT 3	LOT 2	LOT 1
LOT 5	<div style="text-align: center;"><b>RECEIVED</b> JAN 10 2011 NMOCD ARTESIA</div>		
LOT 6			
LOT 7			
<p>GEODETIC COORDINATES NAD 27 NME  Y=421200.8 N X=597627.7 E  LAT.=32.157604° N LONG.=104.017860° W</p> <p>2886.8' 2886.3' 600' 2889.8' 2910.0' 600' 2080'</p>			
<p><b>OPERATOR CERTIFICATION</b></p> <p>I hereby certify that the information herein is true and complete to the best of my knowledge and belief, and that this organization either owns a working interest or unleased mineral interest in the land including the proposed bottom hole location or has a right to drill this well at this location pursuant to a contract with an owner of such mineral or working interest, or to a voluntary pooling agreement or a compulsory pooling order heretofore entered by the division.</p> <p><i>Barry W. Hunt</i> 1/6/11 Signature Date <i>Barry W. Hunt</i> Printed Name</p>			
<p><b>SURVEYOR CERTIFICATION</b></p> <p>I hereby certify that the well location shown on this plat was plotted from field notes of actual surveys made by me or under my supervision, and that the same is true and correct to the best of my belief.</p> <p>RONALD J. EIDSON NOVEMBER 24 2009 Date Surveyed Signature &amp; Seal Professional Surveyor <i>Ronald J. Eidson</i> 12-03-09 094441026</p> <p>Certificate No. RONALD EIDSON 3239</p>			

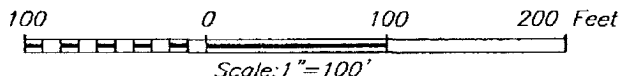
148

**SECTION 6, TOWNSHIP 25 SOUTH, RANGE 29 EAST, N.M.P.M.,**  
 EDDY COUNTY, NEW MEXICO



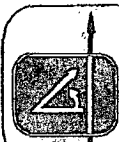
**DIRECTIONS TO LOCATION**

FROM THE INTERSECTION OF U.S. HWY. #285 AND CO. RD. #725 (WHITEHORN), GO NORTHEAST ON CO. RD. #725 APPROX. 3.7 MILES. CROSS THE RIVER AND CONTINUE SOUTHEAST APPROX. 0.2 MILES. TURN LEFT AND GO NORTHEAST APPROX. 1.9 MILES. TURN LEFT AND GO NORTHWEST APPROX. 0.2 MILES. VEER RIGHT AND CONTINUE NORTH APPROX. 0.2 MILES. TURN LEFT AND GO NORTHWEST APPROX. 2.1 MILES. TURN LEFT AND GO WEST APPROX. 0.1 MILES. VEER LEFT AND GO SOUTHWEST 0.1 MILE. TURN RIGHT AND GO NORTHWEST APPROX. 1.1 MILES. VEER RIGHT AND GO NORTH APPROX. 0.2 MILES. VEER LEFT AND GO APPROX. 200 FEET. THIS LOCATION STAKE IS APPROX. 150 FEET NORTH OF ROAD.



**XTO ENERGY**

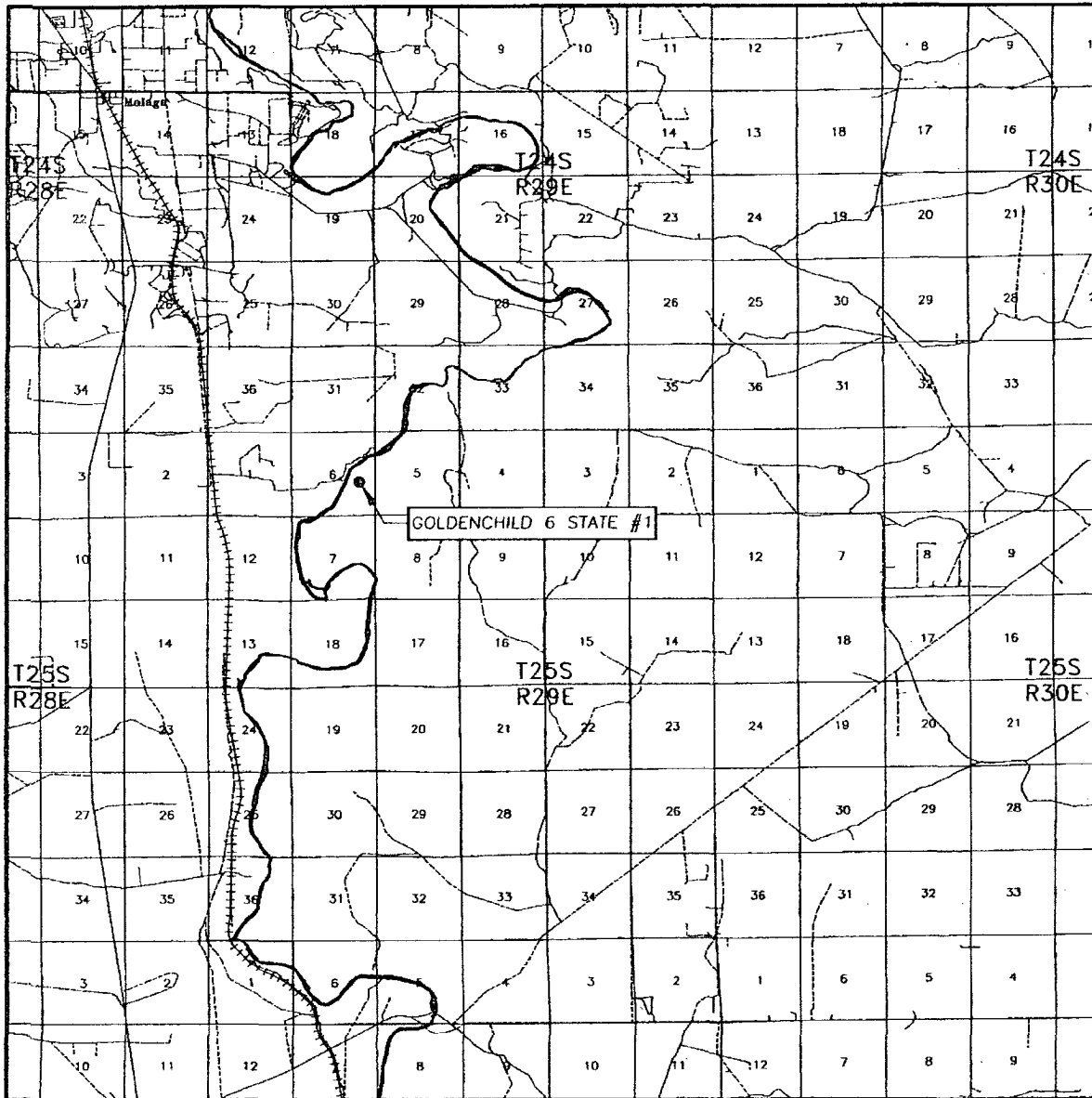
GOLDENCHILD 6 STATE #1 WELL  
 LOCATED 2080 FEET FROM THE SOUTH LINE  
 AND 990 FEET FROM THE EAST LINE OF SECTION 6,  
 TOWNSHIP 25 SOUTH, RANGE 29 EAST, N.M.P.M.,  
 EDDY COUNTY, NEW MEXICO.



PROVIDING SURVEYING SERVICES  
 SINCE 1946  
**JOHN WEST SURVEYING COMPANY**  
 412 N. DAL PASO  
 HOBBS, N.M. 88240  
 (575) 393-3117

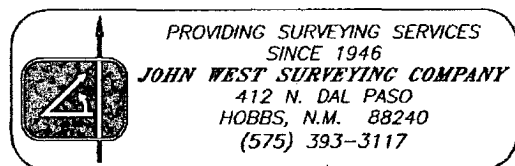
Survey Date: 11/24/09	Sheet 1 of 1 Sheets
W.O. Number: 09.11.1026	Dr By: LA
Date: 12/3/09	09111026
	Scale: 1"=100'

# VICINITY MAP

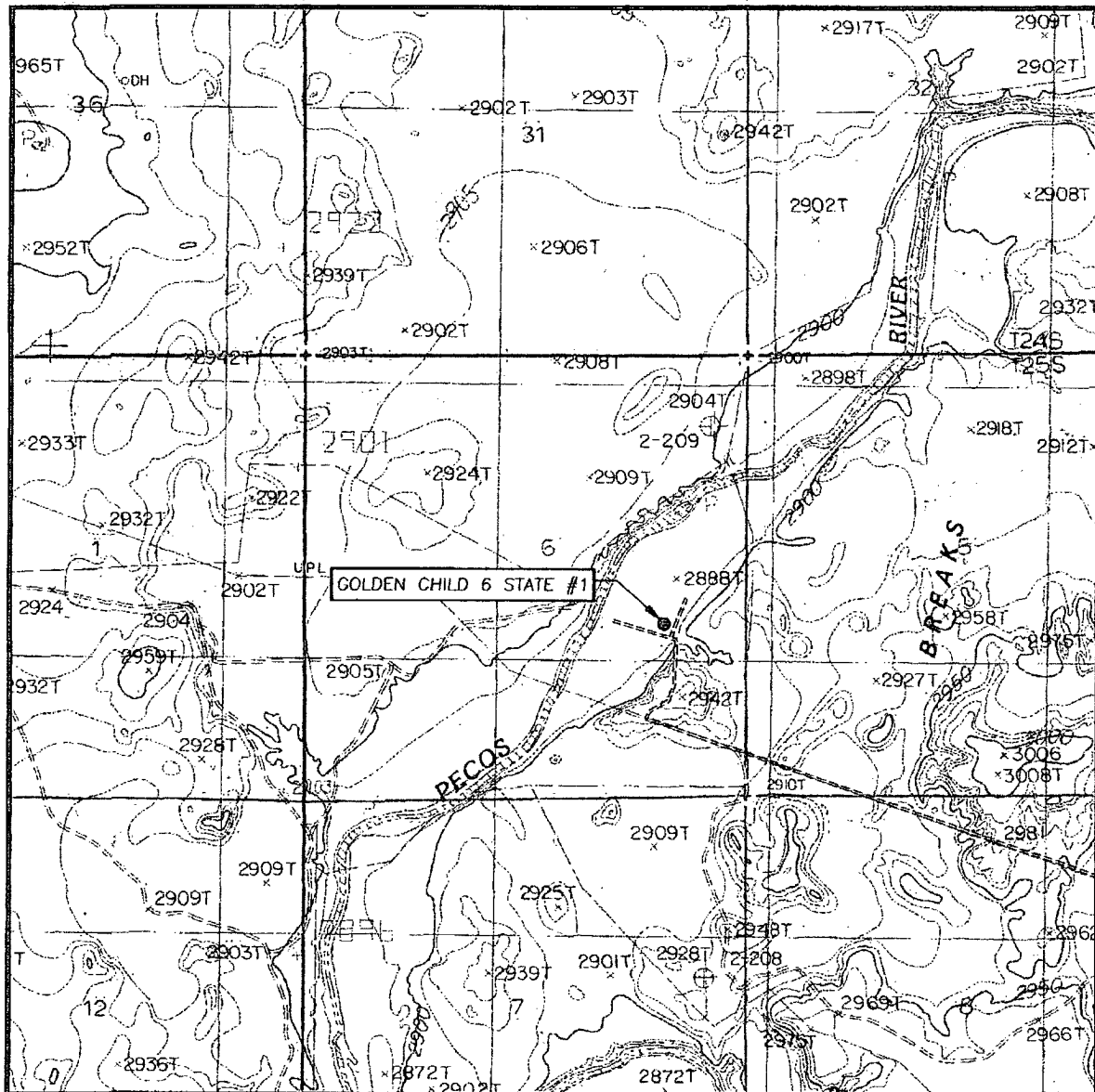


SCALE: 1" = 2 MILES

SEC. 6 TWP. 25-S RGE. 29-E  
 SURVEY N.M.P.M.  
 COUNTY EDDY STATE NEW MEXICO  
 DESCRIPTION 2080' FSL & 990' FEL  
 ELEVATION 2891'  
 OPERATOR XTO ENERGY  
 LEASE GOLDENCHILD 6 STATE



# LOCATION VERIFICATION MAP



SCALE: 1" = 2000'

CONTOUR INTERVAL:  
MALAGA, N.M. - 10'

SEC. 6 TWP. 25-S RGE. 29-E

SURVEY \_\_\_\_\_ N.M.P.M.

COUNTY EDDY STATE NEW MEXICO

DESCRIPTION 2080' FSL & 990' FEL

ELEVATION 2891'

OPERATOR XTO ENERGY

LEASE GOLDENCHILD 6 STATE

U.S.G.S. TOPOGRAPHIC MAP  
MALAGA, N.M.

