

30-015-38533

RECEIVED

FEB 25 2011

NMOCD ARTESIA

**SURFACE USE PLAN**

Devon Energy Production Company, LP

**Cotton Draw Unit 135H**

Surface Location: 200' FSL & 1600' FWL, Unit N, Sec 2 T25S R31E, Eddy, NM

Bottom Hole Location: 2600' FSL & 986' FWL, Unit L, Sec 35 T24S R31E, Eddy, NM

**1. Existing Roads:**

- a. The well site and elevation plat for the proposed well are reflected on the well site layout; Form C-102. The well was staked by Madron Surveying, Inc.
- b. All roads into the location are depicted on Exhibit 3.
- c. Directions to Location: From CR #786 (Buck Jackson) and CR #791 (Buck Thorn) go south 3.1 miles, turn left and go east 1.15 miles to a proposed road survey and follow flags north 796' to proposed pad for this location.

**2. New or Reconstructed Access Roads:**

- a. The well site layout, Form C-102 shows the existing County road. Approximately 796' of new access road will be constructed as follows. The maximum width of the road will be 15'. It will be crowned and made of 6" rolled and compacted caliche. Water will be deflected, as necessary, to avoid accumulation and prevent surface erosion.
- b. Surface material will be native caliche. This material will be obtained from a BLM approved pit nearest in proximity to the location. The average grade will be approximately 1%.
- c. No cattle guards, grates or fence cuts will be required. No turnouts are planned.

**3. Location of Existing Wells:**

One Mile Radius Plat shows all existing and proposed wells within a one-mile radius of the proposed location. See attached plat.

**4. Location of Existing and/or Proposed Production Facilities:**

- a. In the event the well is found productive it will go to a battery on site and the necessary production equipment will be installed at the well site. (See Attached diagram)
- b. If necessary, the well will be operated by means of an electric prime mover. Electric power poles will be set along side of the access road.
- c. All flow lines will adhere to API standards.
- d. If the well is productive, rehabilitation plans are as follows:
  - i. The original topsoil from the well site will be returned to the location. The drill site will then be contoured as close as possible to the original state.

**5. Location and Types of Water Supply:**

This location will be drilled using a combination of water mud systems (outlined in the Drilling Program). The water will be obtained from commercial water stations in the area and hauled to location by transport truck using the existing and proposed roads shown in the C-102. On occasion, water will be obtained from a pre-existing water well, running a pump directly to the drill rig. In these cases where a poly pipeline is used to transport water for drilling purposes, proper authorizations will be secured. If a poly pipeline is used, the size, distance, and map showing route will be provided to the BLM via sundry notice.

**6. Construction Materials:**

The caliche utilized for the drilling pad and proposed access road will be from minerals that are located onsite or will be used onsite. If minerals are not available onsite, then an established mineral pit will be used to build the location and stem road.

**7. Methods of Handling Waste Material:**

- a. Drill cuttings will be disposed.
- b. All trash, junk and other waste material will be contained in trash cages or trash bins to prevent scattering. When the job is completed all contents will be removed and disposed of in an approved sanitary landfill.
- c. The supplier, including broken sacks, will pick up salts remaining after completion of well.
- d. A Porto-john will be provided for the rig crews. This equipment will be properly maintained during the drilling and completion operations and will be removed when all operations are complete.
- e. Remaining drilling fluids will be sent to a closed loop system. Water produced during completion will be put into a closed loop system. Oil and condensate produced will be put into a storage tank and sold.
- f. Disposal of fluids to be transported by the following companies:
  - i. American Production Service Inc, Odessa TX
  - ii. Gandy Corporation, Lovington NM
  - iii. I & W Inc, Loco Hill NM
  - iv. Jims Water Service of Co Inc, Denver CO

**8. Ancillary Facilities:** No campsite or other facilities will be constructed as a result of this well.

**9. Well Site Layout**

- a. Exhibit D shows the proposed well site layout with dimensions of the pad layout.
- b. This exhibit indicated proposed location of sump pits and living facilities.
- c. Mud pits in the active circulating system will be steel pits.
- d. A closed loop system will be utilized.



devon

## Proposed Interim Site Reclamation

Devon Energy Production Co.  
CDU 135H, 136H and 137H  
SE/4 SW/4  
Sec. 2-T25S-R31E  
Eddy County, NM

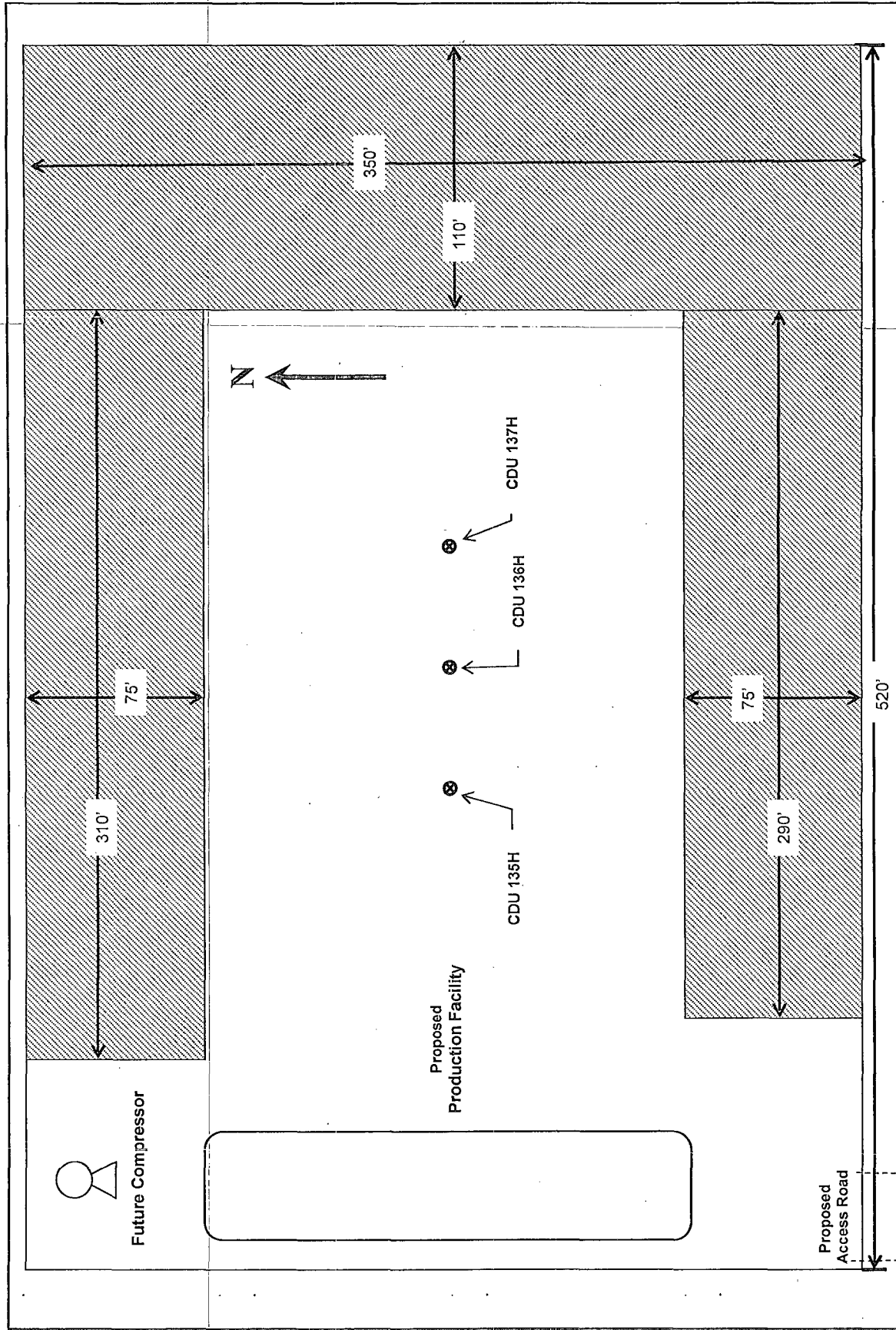


Proposed  
Reclamation Area



1" = 50'

GM 8/26/10



- e. If a pit or closed loop system is utilized, Devon will comply with the NMOCD requirements 19.15.17 and submit form C-144 to the appropriate NMOCD District Office. A copy to be provided to the BLM.

**10. Plans for Surface Reclamation Include Both Final & Interim:**

- a. After concluding the drilling and/or completion operations, if the well is found non-commercial, the caliche will be removed from the pad and transported to the original caliche pit or used for other drilling locations. The road will be reclaimed as directed by the BLM. The original top soil will again be returned to the pad and contoured, as close as possible, to the original topography. We will use a closed loop system.
- b. The location and road will be rehabilitated as recommended by the BLM.
- c. If the well is deemed commercially productive, caliche from areas of the pad site not required for operations will be reclaimed. The original top soil will be returned to the area of the drill pad not necessary to operate the well. These unused areas of the drill pad will be contoured, as close as possible, to match the original topography.
- d. All disturbed areas not needed for active support of production operations will undergo interim reclamation. The portions of the cleared well site not needed for operational and safety purposes will be recontoured to a final or intermediate contour that blends with the surrounding topography as much as possible. Topsoil will be respread over areas not needed for all-weather operations.

**11. Surface Ownership**

- a. The surface is owned by the US Government and is administered by the Bureau of Land Management. The surface is multiple use with the primary uses of the region for the grazing of livestock and the production of oil and gas. The minerals are owned and administered by the State of New Mexico and the BLM.
- b. The proposed road routes and the surface location will be restored as directed by the BLM.

**12. Other Information:**

- a. The area surrounding the well site is grassland. The topsoil is very sandy in nature. The vegetation is moderately sparse with native prairie grass, sage bush, yucca and miscellaneous weeds. No wildlife was observed but it is likely that deer, rabbits, coyotes, and rodents traverse the area.
- b. There is no permanent or live water in the general proximity of the location.
- c. There are no dwellings within 2 miles of location.
- d. A Cultural Resources Examination will be completed by the Permian Basin Cultural Resource Fund in lieu of being required to conduct a Class III Survey for cultural resources associated with their project within the BLM office in Carlsbad, New Mexico.

- e. If a pit or closed loop system is utilized, Devon will comply with the NMOCD requirements 19.15.17 and submit form C-144 to the appropriate NMOCD District Office. A copy to be provided to the BLM.

**10. Plans for Surface Reclamation Include Both Final & Interim:**

- a. After concluding the drilling and/or completion operations, if the well is found non-commercial, the caliche will be removed from the pad and transported to the original caliche pit or used for other drilling locations. The road will be reclaimed as directed by the BLM. The original top soil will again be returned to the pad and contoured, as close as possible, to the original topography. We will use a closed loop system.
- b. The location and road will be rehabilitated as recommended by the BLM.
- c. If the well is deemed commercially productive, caliche from areas of the pad site not required for operations will be reclaimed. The original top soil will be returned to the area of the drill pad not necessary to operate the well. These unused areas of the drill pad will be contoured, as close as possible, to match the original topography.
- d. All disturbed areas not needed for active support of production operations will undergo interim reclamation. The portions of the cleared well site not needed for operational and safety purposes will be recontoured to a final or intermediate contour that blends with the surrounding topography as much as possible. Topsoil will be respread over areas not needed for all-weather operations.

**11. Surface Ownership**

- a. The surface is owned by the US Government and is administered by the Bureau of Land Management. The surface is multiple use with the primary uses of the region for the grazing of livestock and the production of oil and gas. The minerals are owned and administered by the State of New Mexico and the BLM.
- b. The proposed road routes and the surface location will be restored as directed by the BLM.

**12. Other Information:**

- a. The area surrounding the well site is grassland. The topsoil is very sandy in nature. The vegetation is moderately sparse with native prairie grass, sage bush, yucca and miscellaneous weeds. No wildlife was observed but it is likely that deer, rabbits, coyotes, and rodents traverse the area.
- b. There is no permanent or live water in the general proximity of the location.
- c. There are no dwellings within 2 miles of location.
- d. A Cultural Resources Examination will be completed by the Permian Basin Cultural Resource Fund in lieu of being required to conduct a Class III Survey for cultural resources associated with their project within the BLM office in Carlsbad, New Mexico.

**13. Bond Coverage:**

Bond Coverage is Nationwide; Bond # is CO-1104

---

**Operators Representative:**

The Devon Energy Production Company, L.P. representatives responsible for ensuring compliance of the surface use plan are listed below.

Greg McGowen - Operations Engineer  
Advisor

Devon Energy Production Company, L.P.

20 North Broadway

Oklahoma City, OK 73102-8260

(405) 228-8965 (office)

(405) 464-9769 (Cellular)

Don Mayberry - Superintendent

Devon Energy Production Company, L.P.

Post Office Box 250

Artesia, NM 88211-0250

(575) 748-3371 (office)

(575) 746-4945 (home)

---

## Certification

I hereby certify that I, or persons under my direct supervision, have inspected the proposed drill site and access road proposed herein; that I am familiar with the conditions that presently exist; that I have full knowledge of State and Federal laws applicable to this operation; that the statements made in this APD package are, to the best of my knowledge, true and correct; and that the work associated with the operations proposed herein will be performed in conformity with this APD package and the terms and conditions under which it is approved. I also certify that I, or Devon Energy Production Company, L.P. am responsible for the operations conducted under this application. These statements are subject to the provisions of 18 U.S.C. 1001 for the filing of false statements.

I hereby also certify that I, or Devon Energy Production Company, L.P. have made a good faith effort to provide the surface owner with a copy of the Surface Use Plan of Operations and any Conditions of Approval that are attached to the APD.

Executed this 16<sup>th</sup> day of November, 2010.

Printed Name: Judy A. Barnett

Signed Name: 

Position Title: Regulatory Analyst

Address: 20 North Broadway, OKC OK 73102

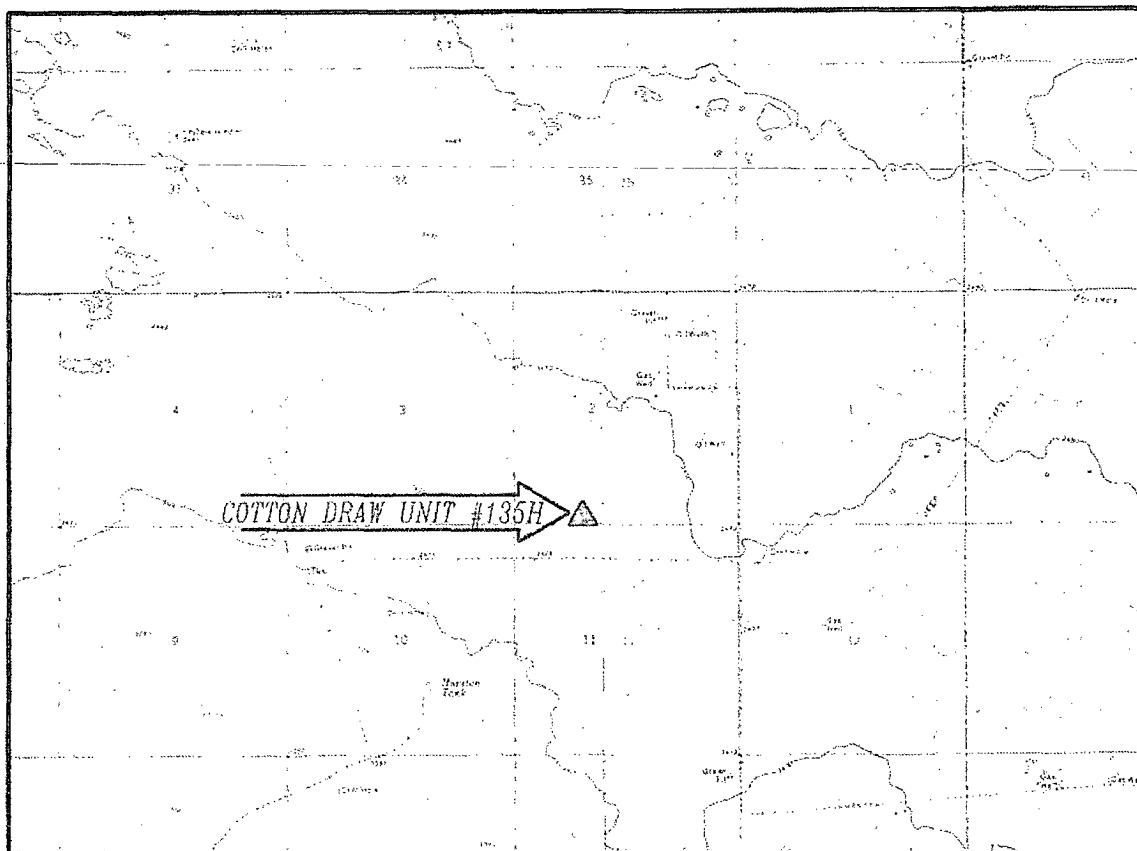
Telephone: (405)-228-8699

Field Representative (if not above signatory):

Address (if different from above):

Telephone (if different from above):

SECTION 2, TOWNSHIP 25 SOUTH, RANGE 31 EAST, N.M.P.M.  
EDDY COUNTY, STATE OF NEW MEXICO  
**LOCATION VERIFICATION MAP**



CONTOUR INTERVAL:  
BIG SINKS  
PADUCA BREAKS NW

NOT TO SCALE

**DIRECTIONS TO LOCATION**

FROM CR.# 786 (BUCK JACKSON) (CALICHE) AND CR.# 791 (BUCK THORN) (CALICHE) GO SOUTH ON CR. 791 3.1 MILES TURN LEFT AND GO EAST 1.15 MILES TO A PROPOSED ROAD SURVEY AND FOLLOW FLAGS NORTH 796' TO A PROPOSED PAD FOR THIS LOCATION.

SEC. 2 TWP. 25-S RGE. 31-E  
SURVEY N.M.P.M.  
COUNTY EDDY STATE NEW MEXICO  
DESCRIPTION 200' FSL & 1600' FWL  
ELEVATION 3420.8'  
OPERATOR DEVON ENERGY PRODUCTION COMPANY, LP  
LEASE COTTON DRAW

DEVON ENERGY PRODUCTION COMPANY, L.P.  
COTTON DRAW UNIT #135H  
LOCATED 200 FT. FROM THE SOUTH LINE  
AND 1600 FT. FROM THE WEST LINE OF  
SECTION 2, TOWNSHIP 25 SOUTH,  
RANGE 31 EAST, N.M.P.M.  
EDDY COUNTY, STATE OF NEW MEXICO

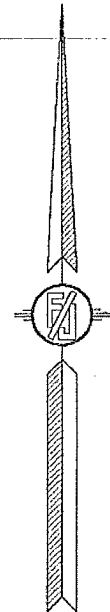
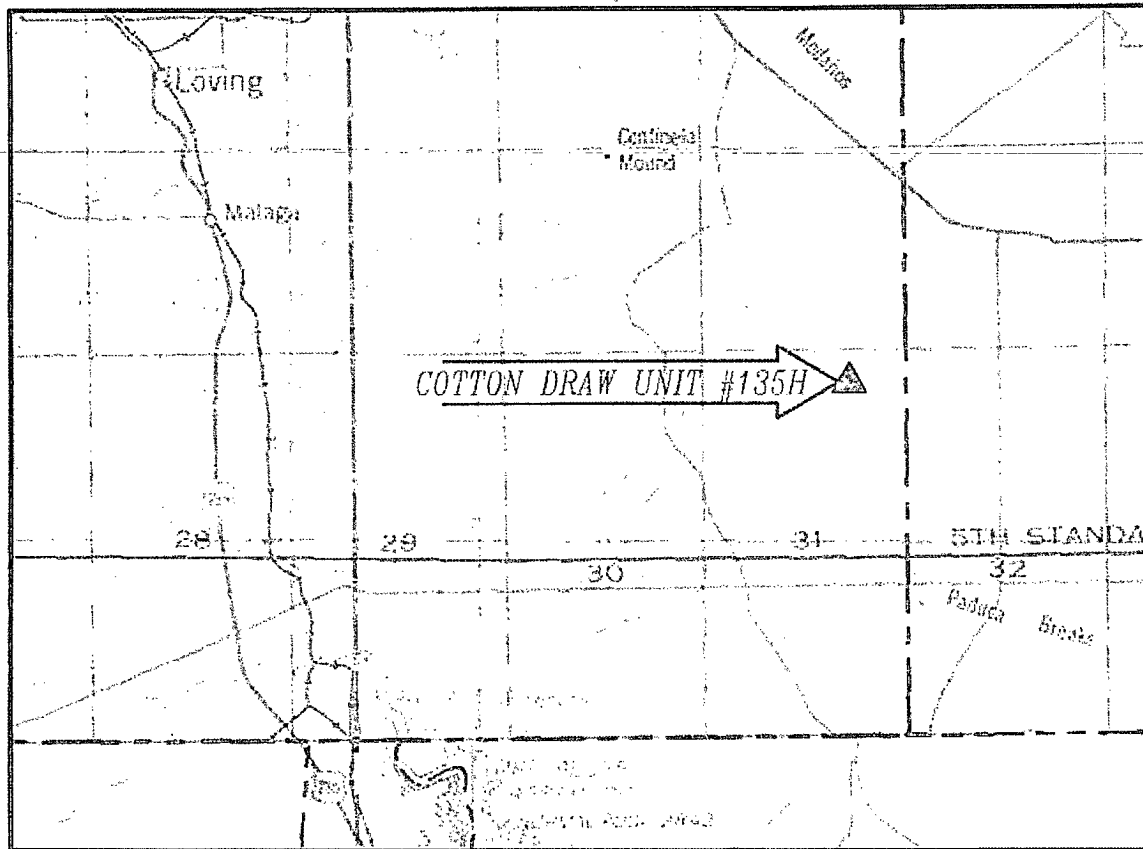
AUGUST 9, 2010

SURVEY NO. 174 - R1

MADRON SURVEYING, INC. 301 SOUTH CANAL (575) 857-5850 CARLSBAD, NEW MEXICO



SECTION 2, TOWNSHIP 25 SOUTH, RANGE 31 EAST, N.M.P.M.  
 EDDY COUNTY, STATE OF NEW MEXICO  
 VICINITY MAP



DIRECTIONS TO LOCATION

NOT TO SCALE

FROM CR.# 786 (BUCK JACKSON) (CALICHE) AND CR.# 791 (BUCK THORN) (CALICHE) GO SOUTH ON CR. 791 3.1 MILES TURN LEFT AND GO EAST 1.15 MILES TO A PROPOSED ROAD SURVEY AND FOLLOW FLAGS NORTH 796' TO A PROPOSED PAD FOR THIS LOCATION.

SEC. 2 TWP. 25-S RCE. 31-E  
 SURVEY N.M.P.M.  
 COUNTY EDDY STATE NEW MEXICO  
 DESCRIPTION 200' FSL & 1600' FWL  
 ELEVATION 3420.8'  
 OPERATOR DEVON ENERGY PRODUCTION COMPANY, LP  
 LEASE COTTON DRAW

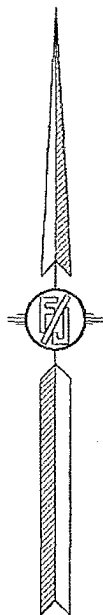
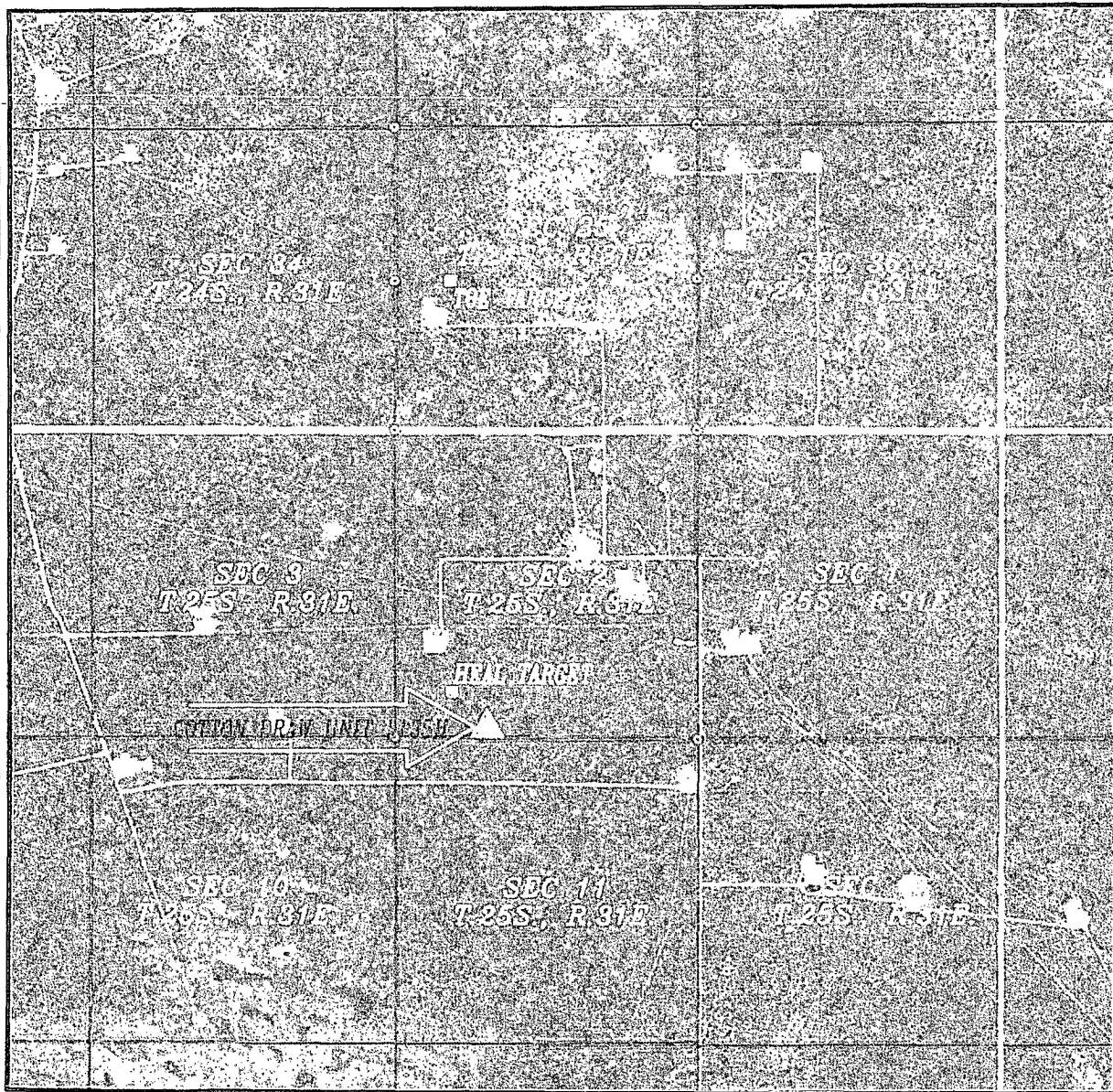
DEVON ENERGY PRODUCTION COMPANY, L.P.  
 COTTON DRAW UNIT #135H  
 LOCATED 200 FT. FROM THE SOUTH LINE  
 AND 1600 FT. FROM THE WEST LINE OF  
 SECTION 2, TOWNSHIP 25 SOUTH,  
 RANGE 31 EAST, N.M.P.M.  
 EDDY COUNTY, STATE OF NEW MEXICO

AUGUST 9, 2010

SURVEY NO. 174 - R1

MADRON SURVEYING, INC. 301 SOUTH CANAL CARLSBAD, NEW MEXICO  
 (575) 687-5830

SECTION 2, TOWNSHIP 25 SOUTH, RANGE 31 EAST, N.M.P.M.  
 EDDY COUNTY, STATE OF NEW MEXICO  
 AERIAL PHOTO



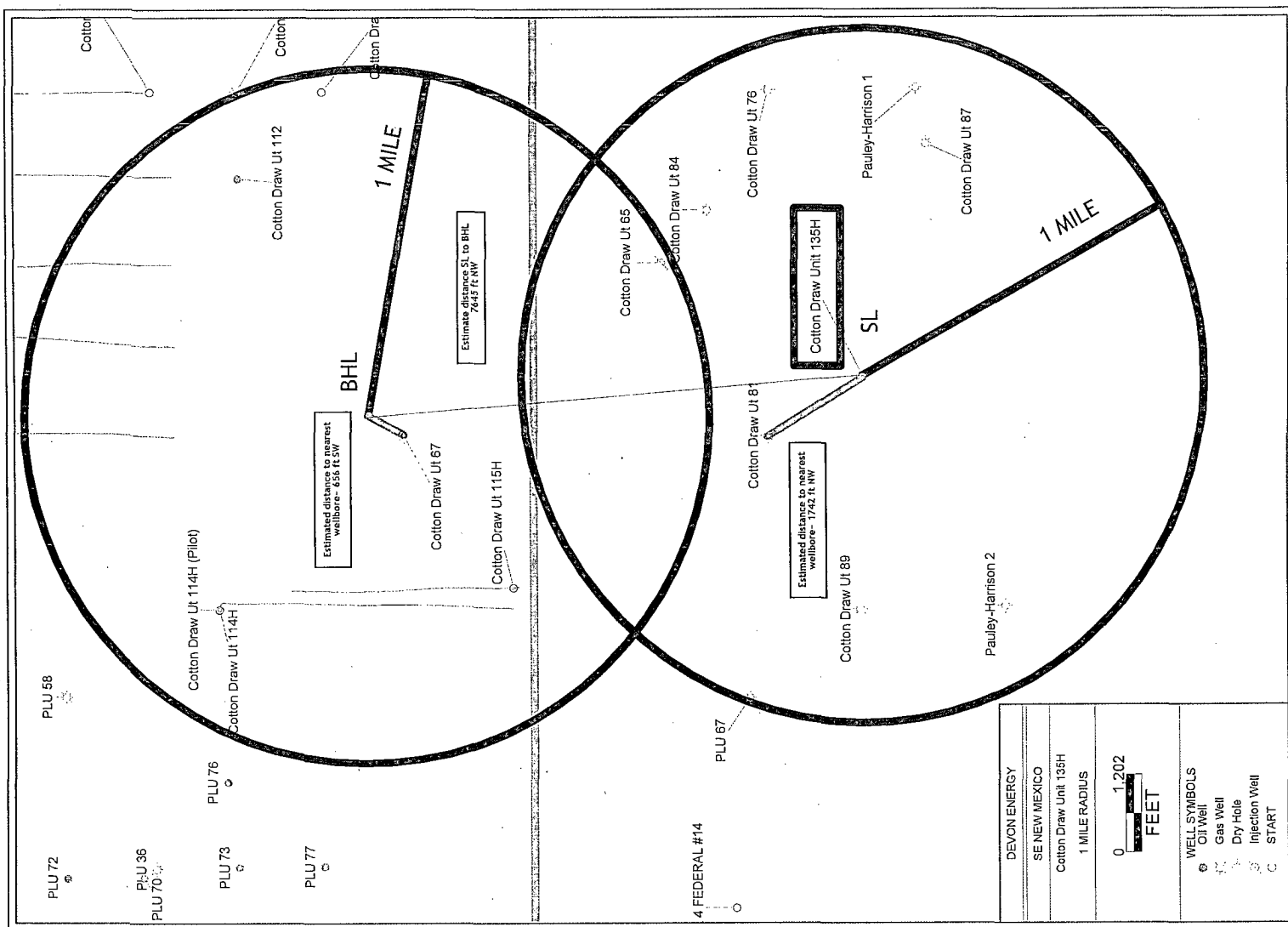
NOT TO SCALE  
 AERIAL PHOTO:  
 GOOGLE EARTH  
 USDA - AUG, 2009

DEVON ENERGY PRODUCTION COMPANY, L.P.  
 COTTON DRAW UNIT #135H  
 LOCATED 200 FT. FROM THE SOUTH LINE  
 AND 1600 FT. FROM THE WEST LINE OF  
 SECTION 2, TOWNSHIP 25 SOUTH,  
 RANGE 31 EAST, N.M.P.M.  
 EDDY COUNTY, STATE OF NEW MEXICO

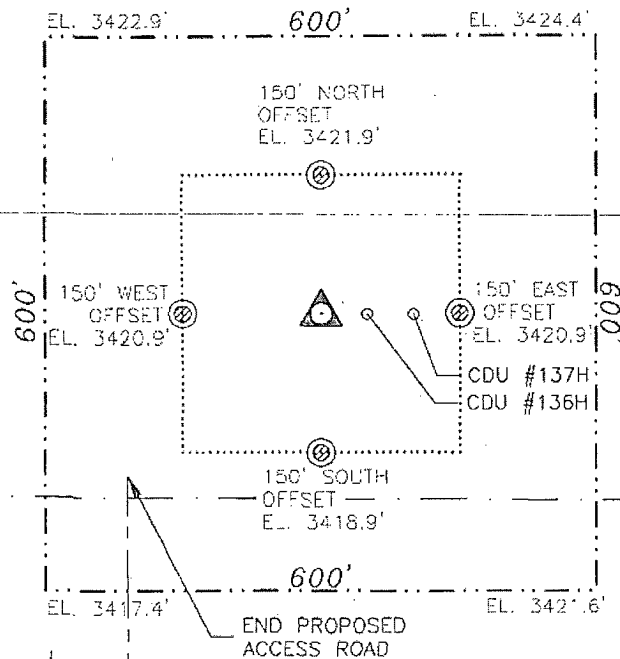
AUGUST 9, 2010

SURVEY NO. 174 - R1

MADRON SURVEYING, INC. 301 SOUTH CANAL CARLSBAD, NEW MEXICO  
 (575) 887-5830



SECTION 2, TOWNSHIP 25 SOUTH, RANGE 31 EAST, N.M.P.M.  
EDDY COUNTY, STATE OF NEW MEXICO



COTTON DRAW UNIT #135H

ELEV. = 3420.8'

LAT. = 32°09'09.940"N (NAD83)

LONG. = 103°45'07.405"W

NMSP EAST (FT)

N = 419734.16

E = 721236.80

SEC. 2  
SEC. 11

BC 1915

CENTERLINE  
PROPOSED  
ACCESS ROAD  
(796 L.F.)

BEGIN PROPOSED  
ACCESS ROAD

0 20 100 200 400

SCALE 1" = 200'

DIRECTIONS TO LOCATION

FROM CR. # 786 (BUCK JACKSON) (CALICHE) AND CR. # 791  
(BUCK THORN) (CALICHE) GO SOUTH ON CR. 791 3.1 MILES  
TURN LEFT AND GO EAST 1.15 MILES TO A PROPOSED ROAD  
SURVEY AND FOLLOW FLAGS NORTH 796' TO A PROPOSED PAD  
FOR THIS LOCATION.

DEVON ENERGY PRODUCTION COMPANY, L.P.

COTTON DRAW UNIT #135H

LOCATED 200 FT. FROM THE SOUTH LINE  
AND 1600 FT. FROM THE WEST LINE OF  
SECTION 2, TOWNSHIP 25 SOUTH,

RANGE 31 EAST, N.M.P.M.

EDDY COUNTY, STATE OF NEW MEXICO

AUGUST 9, 2010

SURVEY NO. 174 - R1

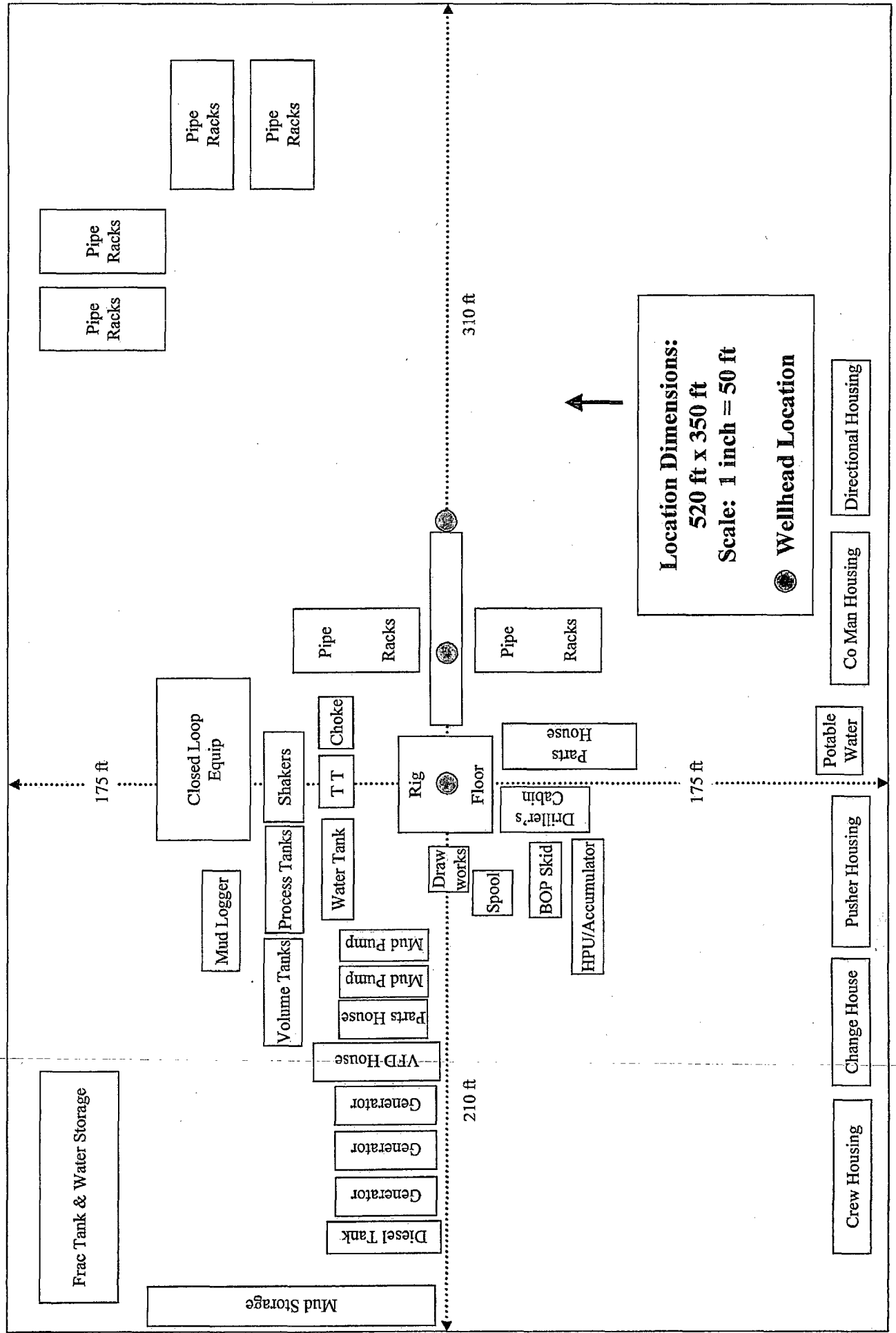
MADRON SURVEYING, INC.

301 SOUTH CANAL  
(575) 687-5836

CARLSBAD, NEW MEXICO

# H&P Flex Rig Location Layout

## 3 Well Pad





**Fluid Technology**

ContiTech Beattie Corp.  
Website: [www.contitechbeattie.com](http://www.contitechbeattie.com)

Monday, June 14, 2010

RE: Drilling & Production Hoses  
Lifting & Safety Equipment

---

To Helmerich & Payne,

A Continental ContiTech hose assembly can perform as intended and suitable for the application regardless of whether the hose is secured or unsecured in its configuration. As a manufacturer of High Pressure Hose Assemblies for use in Drilling & Production, we do offer the corresponding lifting and safety equipment, this has the added benefit of easing the lifting and handling of each hose assembly whilst affording hose longevity by ensuring correct handling methods and procedures as well as securing the hose in the unlikely event of a failure; but in no way does the lifting and safety equipment affect the performance of the hoses providing the hoses have been handled and installed correctly. It is good practice to use lifting & safety equipment but not mandatory.

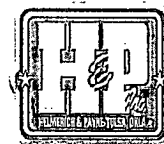
Should you have any questions or require any additional information/clarifications then please do not hesitate to contact us.

ContiTech Beattie is part of the Continental AG Corporation and can offer the full support resources associated with a global organization.

Best regards,

Robin Hodgson  
Sales Manager  
ContiTech Beattie Corp

ContiTech Beattie Corp,  
11535 Brittmoore Park Drive,  
Houston, TX 77041  
Phone: +1 (832) 327-0141  
Fax: +1 (832) 327-0148  
[www.contitechbeattie.com](http://www.contitechbeattie.com)





**PHOENIX RUBBER  
INDUSTRIAL LTD.**

**QUALITY DOCUMENT**

H-6728 Szeged, Budapesti út 10. Hungary • H-6701 Szeged, P. O. Box 152  
Phone: (3662) 566-737 • Fax: (3662) 566-738

SALES & MARKETING: H-1092 Budapest, Ráday u. 42-44. Hungary • H-1440 Budapest, P. O. Box 26  
Phone: (361) 456-4200 • Fax: (361) 217-2972, 456-4273 • www.taurusmarga.hu

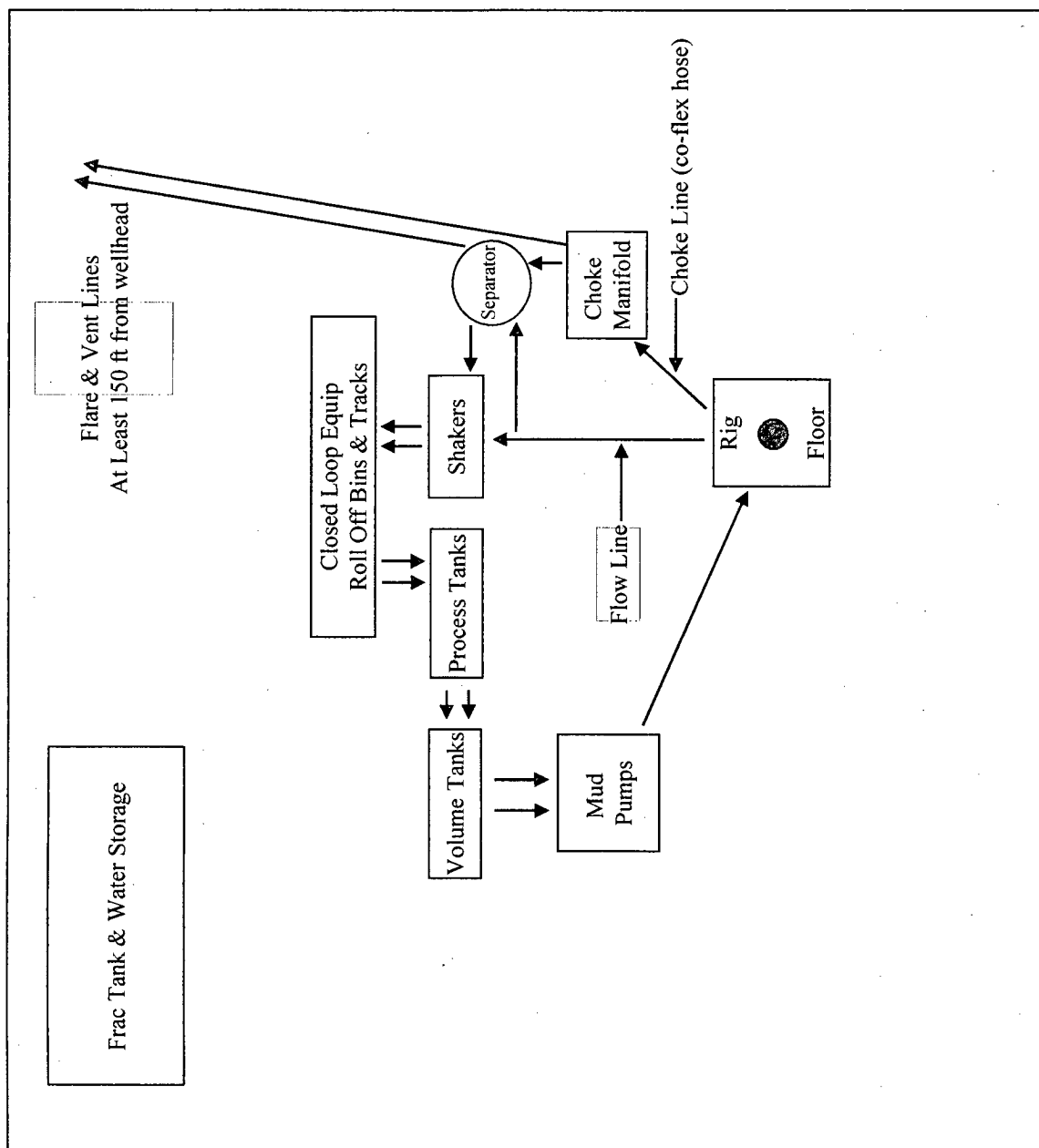
<b>QUALITY CONTROL INSPECTION AND TEST CERTIFICATE</b>				CERT. N°: 555	
PURCHASER: Phoenix Beattie Co.				P.O. N°: 1519FA-871	
PHOENIX RUBBER order N°: 170466		HOSE TYPE: 3" ID Choke and Kill Hose			
HOSE SERIAL N°: 34137		NOMINAL / ACTUAL LENGTH: 11,43 m			
W.P. 68,96 MPa 10000 psi		T.P. 103,4 MPa 15000 psi		Duration: 60 min.	
Pressure test with water at ambient temperature					
See attachment (1 page)					
↑ 10 mm = 10 Min. → 10 mm = 16 MPa					
COUPLINGS					
Type	Serial N°		Quality		Heat N°
3" coupling with 4 1/16" Flange end	714 715		AISI 4130		C7626
			AISI 4130		47357
API Spec 16 C Temperature rate: "B"					
All metal parts are flawless					
WE CERTIFY THAT THE ABOVE HOSE HAS BEEN MANUFACTURED IN ACCORDANCE WITH THE TERMS OF THE ORDER AND PRESSURE TESTED AS ABOVE WITH SATISFACTORY RESULT.					
Date:  30. April. 2002.	Inspector		Quality Control  <b>PHOENIX RUBBER Industrial Ltd.</b> Hose Inspection and Pressure Testing Department 		

**PHOENIX RUBBER**  
Industrial Ltd.  
Hose Inspection and  
Certification Dept.

Wick:



# Closed Loop Equipment Diagram



Bureau of Land Management  
RECEIVED

DEC 08 2010

Carlsbad Field Office  
Carlsbad, N.M.