

30-015-38476

**BURNETT OIL CO., INC. EMERGENCY NOTIFICATION LIST**

**Burnett's New Mexico Office** (575) 677-2313  
**Belton Mathews BOCI District Superintendent** CELL (575) 703-9601  
BURNETT OIL HOME OFFICE (817) 332-5108  
Mark Jacoby BOCI ENGINEERING MANAGER CELL (817) 312- 2751

**EDDY COUNTY SHERIFF** 911 OR (575) 746-9888  
**NEW MEXICO STATE POLICE** (575) 746-2701

Loco Hills Fire Department (VOLUNTEER ONLY) 911 OR (575) 677 2349  
For Medical and Fire (575) 746-2701 (ARTESIA)

Flight for Life Air Ambulance (LUBBOCK) (806) 743-9911  
Aerocare Air Ambulance (LUBBOCK) (806) 747-8923  
Med Flight Air Ambulance (ALBUQ) (505) 842-4433  
S B Med Svc Air Ambulance (ALBUQ) (505) 842-4949

US Bureau of Land Management Carlsbad (575) 361-2822 (575) 234-5972  
New Mexico Oil Conversation Division ARTESIA (575) 748-1283  
New Mexico Emergency Response Commission 24 HR (575) 827-9126  
New Mexico State Emergency Operation Center (575) 476-9635  
Local Emergency Planning Committee (Artesia) (575) 746-2122  
National Emergency Response Center (Washington, DC) (800) 424-8802

Boots & Coots IWC (800) 256-9688  
Cudd Pressure Control (432) 570-5300  
Halliburton Svc (575) 746-2757  
B J Svc (575) 746-2293

**THIS MUST BE POSTED AT THE RIG WHILE ON LOCATION.**

**Burnett Office 87 SQUARE LAKE ROAD (CR #220), Loco Hills, New Mexico 88255**  
(Loco Hills, New Mexico (2 MILES East of Loco Hills On US Hwy 82 TO C#220 Then  
North On CR# 220 Approx One Mile To Office.).

DRILLING EXHIBIT A

## HYDROGEN SULFIDE (H<sub>2</sub>S) CONTINGENCY PLAN

ASSUMED 100 PPM ROE = 3000'

### Emergency Procedures

**In the event of a release of gas containing H<sub>2</sub>S, The first responder(s) must**

- \* Isolate the area and prevent entry by other persons into the 100 PPM ROE.
- \* Evacuate any public places encompassed by 100 PPM ROE.
- \* Be equipped with H<sub>2</sub>S monitors and air packs in order to control release.
- \* Use the "buddy system" to ensure no injuries occur during the response.
- \* Take precautions to avoid personal injury during this operation.
- \* Have received training in the following:
  1. H<sub>2</sub>S detection
  2. Measures for protection against this gas
  3. Equipment used for protection and emergency response.

### Ignition of Gas Source

Should control of the well be considered lost and ignition considered, take care to protect against exposure to Sulfur Dioxide (SO<sub>2</sub>.) Intentional ignition must be coordinated with the NMOCD and local officials. Additionally the New Mexico State Police may become involved. NM State Police shall be the incident command on scene of any major release. Take care to protect downwind whenever there is an ignition of gas.

### **Characteristics of H<sub>2</sub>S and SO<sub>2</sub>**

Common Name	Chemical Formula	Specific Gravity	Threshold Limit	Hazardous Limit	Lethal Concentration
Hydrogen Sulfide	H <sub>2</sub> S	1.189 Air = 1	10 ppm	100 ppm/hr	600 ppm
Sulfur Dioxide	SO <sub>2</sub>	2.21 Air = 1	2 ppm	NA	1000 ppm

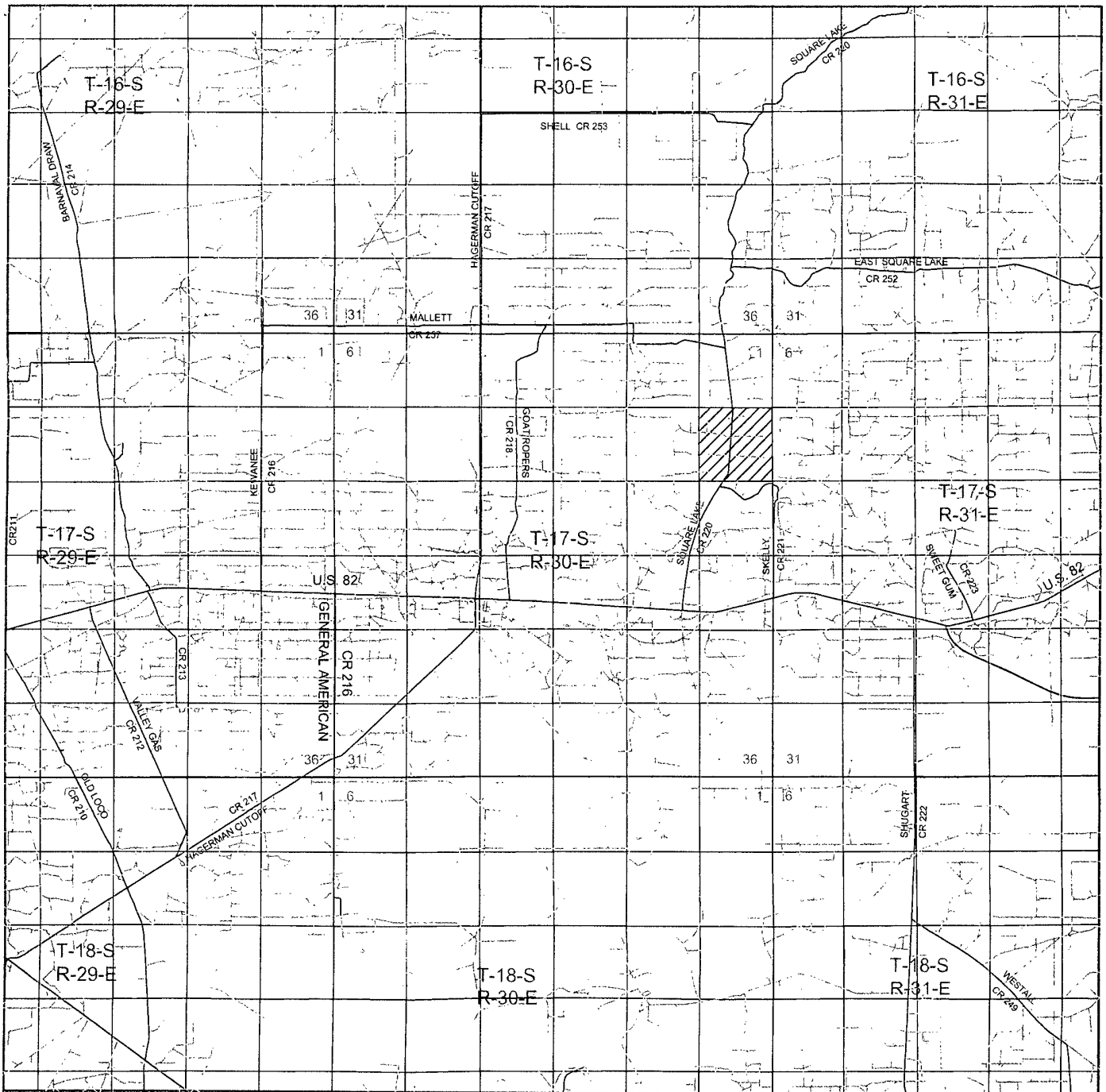
### **Contacting Authorities**

Burnett Oil Co., Inc. personal must liaison with local and state agencies to ensure a proper response to a major release. Additionally, the OCD must be notified of the release as soon as possible but no later than 4 hours. Agencies will ask for information such as type and volume of release, wind and direction, location of release, etc. **Be sure all is written down and ready to give to contact list (Drilling Exhibit A.) Directions to the site are below.** Burnett's response must be in coordination with the State of New Mexico's Hazardous Materials Emergency Response Plan.

**Burnett Office 87 SQUARE LAKE ROAD (CR #220), Loco Hills, New Mexico 88255  
(Loco Hills, New Mexico (2 MILES East of Loco Hills On US Hwy 82 TO C#220 Then North On CR# 220 Approx One Mile To Office**

**BURNETT OIL CO., INC.**

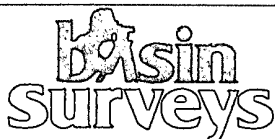
DRILLING EXHIBIT B



# GISSLER "A" #39

SURFACE EXHIBIT A

Located 330' FSL and 2210' FWL  
 Section 12, Township 17 South, Range 30 East,  
 N.M.P.M., Eddy County, New Mexico.



focused on excellence  
 in the oilfield

P.O. Box 1786  
 1120 N. West County Rd.  
 Hobbs, New Mexico 88241  
 (575) 393-7316 - Office  
 (575) 392-2206 - Fax  
 basinsurveys.com

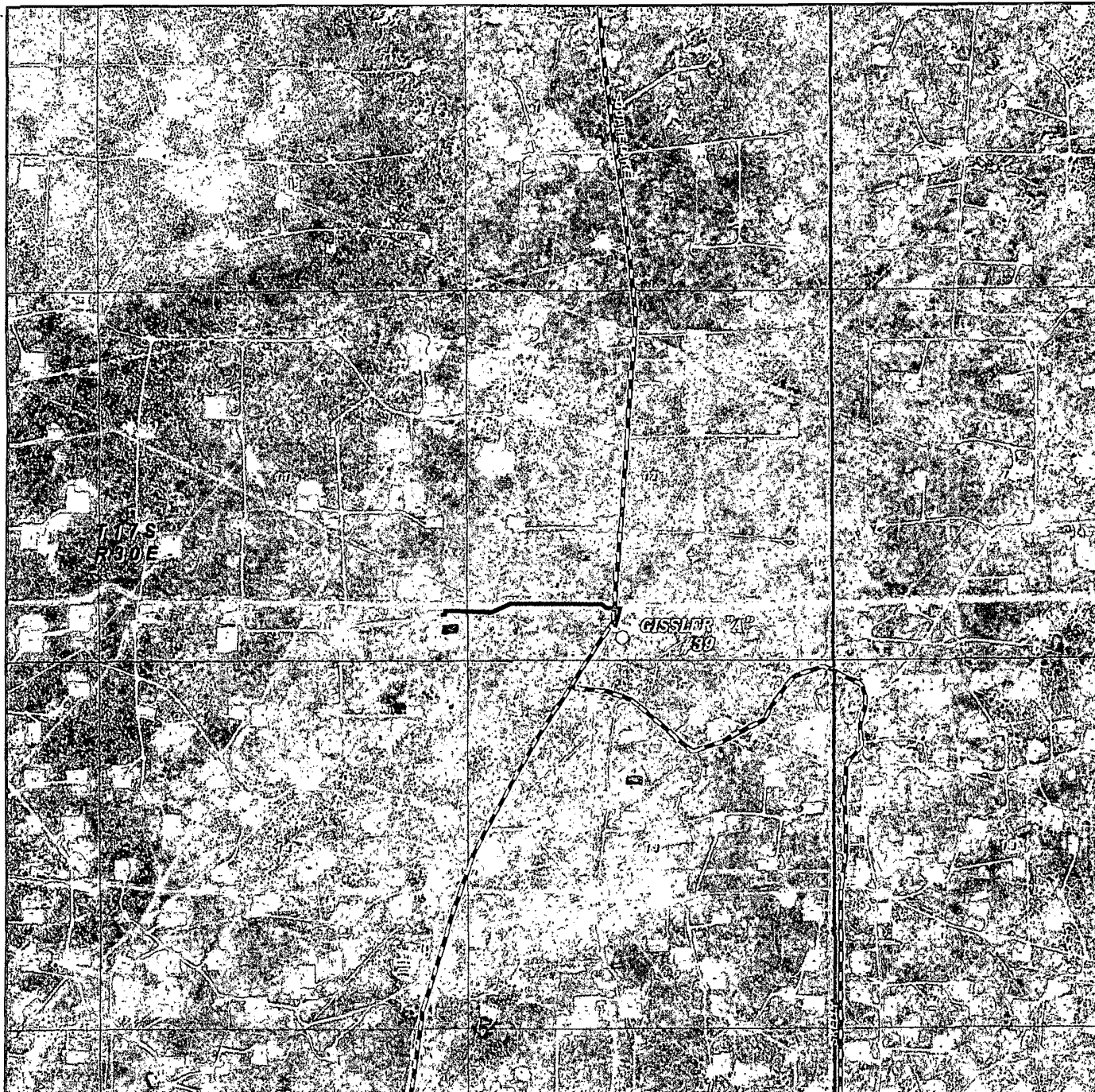
W.O. Number: JMS 23944

Survey Date: 01-05-2011

Scale: 1" = 2 Miles

Date: 01-21-2011

**BURNETT OIL  
 COMPANY, INC.**



GISSLER "A" #39

SURFACE EXHIBIT A2

Located 330' FSL and 2210' FWL

Section 12, Township 17 South, Range 30 East,  
N.M.P.M., Eddy County, New Mexico.

**basin**  
**surveys**  
focused on excellence  
in the oilfield

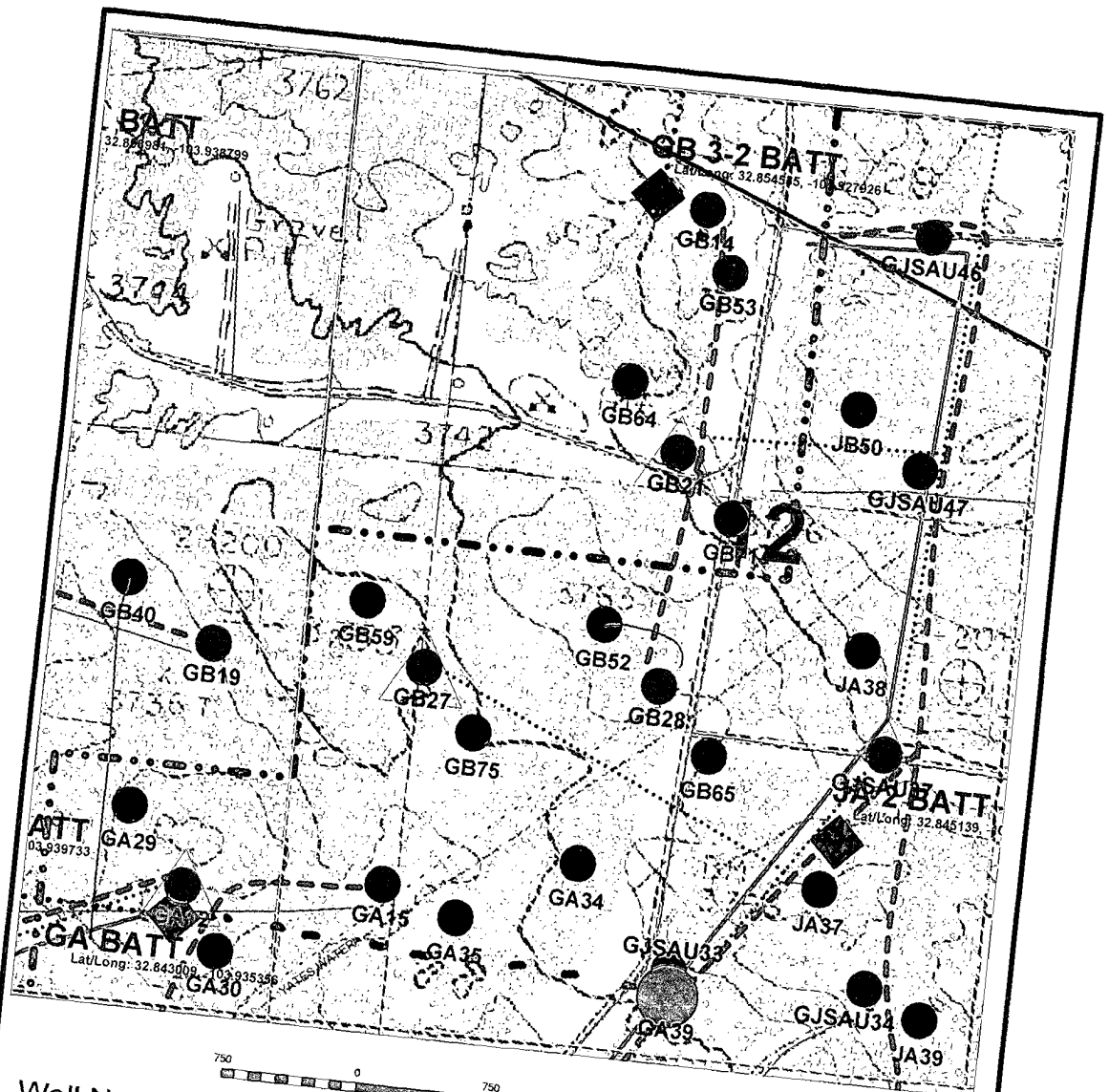
P.O. Box 1786  
1120 N. West County Rd.  
Hobbs, New Mexico 88241  
(575) 393-7316 - Office  
(575) 392-2206 - Fax  
basinsurveys.com

W.O. Number. JMS 23944

Scale: 1" = 2000'

YELLOW TINT - USA LAND  
BLUE TINT - STATE LAND  
NATURAL COLOR - FEE LAND

**BURNETT OIL**  
**COMPANY, INC.**



Well Names  
 GA = Gissler A  
 GB = Gissler B  
 JA = Jackson A  
 JB = Jackson B  
 SA = Stevens A  
 SB = Stevens B  
 GJSA = Grayburg Jackson San Andres

Burnett Oil Co., Inc.  
 6666

Gissler A39 Proposed Well Location  
 (Map Reflects Burnett Operated Wells Only)  
 Eddy County, New Mexico

Author: CLK, Eng Tech	Scale: 1" = 750'	Date: December 27, 2010
--------------------------	---------------------	----------------------------

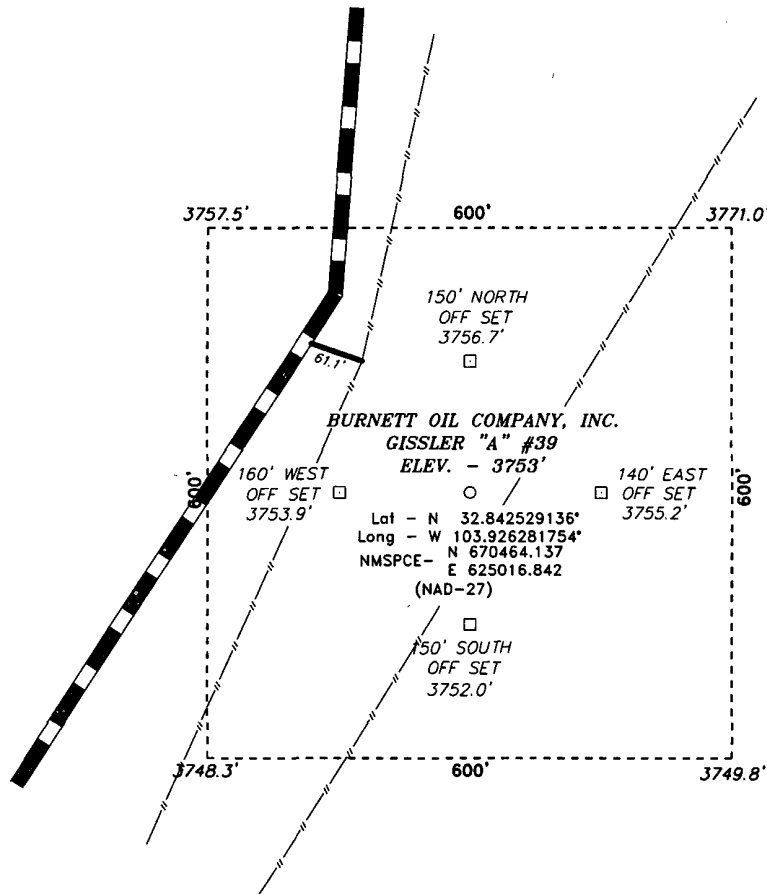
Gissler A39

T17S, R30E, Sect 12, Unit N, NMLC029338A  
 330' FSL, 2210' FWL, GA Battery  
 Lat/Long: 32.842589, -103.926295

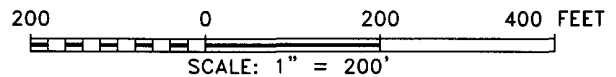
2600' flow line  
 ROW  
 w/county  
 to bore  
 under  
 CR220

SURFACE EXHIBIT B

SECTION 12, TOWNSHIP 17 SOUTH, RANGE 30 EAST, N.M.P.M.,  
EDDY COUNTY, NEW MEXICO.



SURFACE EXHIBIT C



Directions to Location:

FROM THE JUNCTION OF HWY 82 AND SQUARE LAKE,  
GO NORTH ON SQUARE LAKE FOR 2.0 MILES TO  
PROPOSED LOCATION.

**BASIN SURVEYS** P.O. BOX 1786 - HOBBS, NEW MEXICO

W.O. Number: 23944 Drawn By: J. SMALL

Date: 01-21-2011 Disk: JMS 23944

**BURNETT OIL COMPANY, INC.**

REF: GISSLER "A" #39 / WELL PAD TOPO

THE GISSLER "A" #39 LOCATED 330'

FROM THE SOUTH LINE AND 2210' FROM THE WEST LINE OF

SECTION 12, TOWNSHIP 17 SOUTH, RANGE 30 EAST,

N.M.P.M., EDDY COUNTY, NEW MEXICO.

Survey Date: 01-05-2011 Sheet 1 of 1 Sheets



**GISSLER "A" #39**

**SURFACE EXHIBIT A1**

Located 330' FSL and 2210' FWL  
Section 12, Township 17 South, Range 30 East,  
N.M.P.M., Eddy County, New Mexico.

**basin  
surveys**  
focused on excellence  
in the oilfield

P.O. Box 1786  
1120 N. West County Rd.  
Hobbs, New Mexico 88241  
(575) 393-7316 - Office  
(575) 392-2206 - Fax  
basinsurveys.com

W.O. Number: JMS 23944

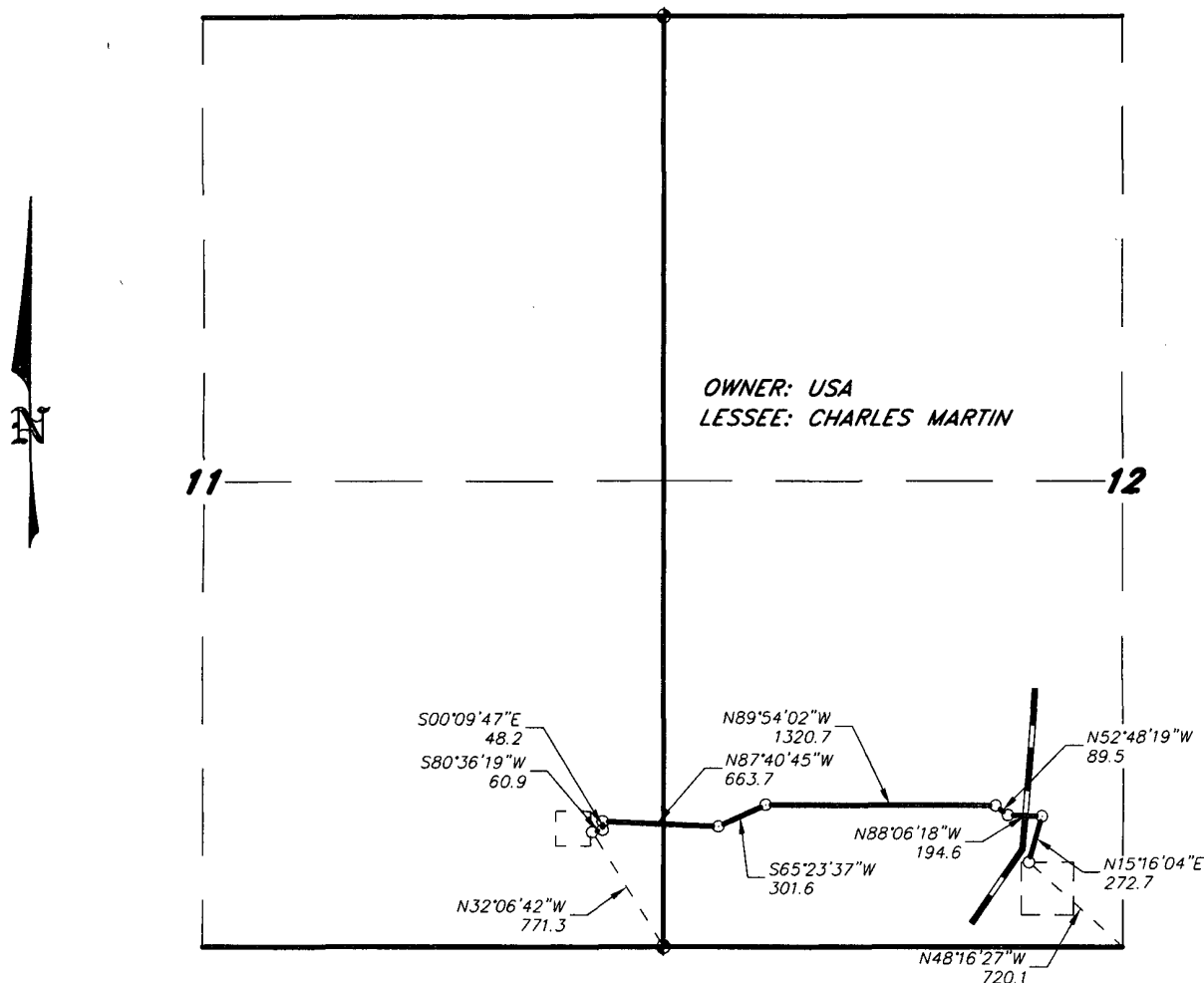
Survey Date: 01-05-2011

Scale: 1" = 2000'

Date: 01-21-2011

**BURNETT OIL  
COMPANY, INC.**

SECTIONS 11&12, TOWNSHIP 17 SOUTH, RANGE 30 EAST, N.M.P.M.,  
EDDY COUNTY, NEW MEXICO.



LEGAL DESCRIPTION

A STRIP OF LAND 30.0 FEET WIDE, LOCATED IN SECTIONS 11&12, TOWNSHIP 17 SOUTH, RANGE 30 EAST, N.M.P.M., EDDY COUNTY, NEW MEXICO AND BEING 15.0 FEET LEFT AND RIGHT OF THE ABOVE PLATTED CENTERLINE SURVEY.

SECTION 11 = 457.7 FEET = 27.74 RODS = 0.09 MILES = 0.32 ACRES  
SECTION 12 = 2494.2 FEET = 151.16 RODS = 0.47 MILES = 1.71 ACRES  
TOTAL = 2951.9 FEET = 178.90 RODS = 0.56 MILES = 2.03 ACRES

SURFACE EXHIBIT C2

I HEREBY CERTIFY THAT THIS SURVEY WAS PREPARED FROM FIELD NOTES OF AN ACTUAL SURVEY AND MEETS OR EXCEEDS THE REQUIREMENTS FOR LAND SURVEYS AS SPECIFIED BY THIS STATE.

GARY L. JONES, P.S. No. 7977  
REGISTERED PROFESSIONAL LAND SURVEYOR No. 5074

**BASIN SURVEYS** P.O. BOX 1786-HOBBS, NEW MEXICO

W.O. Number: 23944 Drawn By: J. M. SMALL

Date: 01-21-2011 Disk: JMS 23944

1000 0 1000 2000 FEET

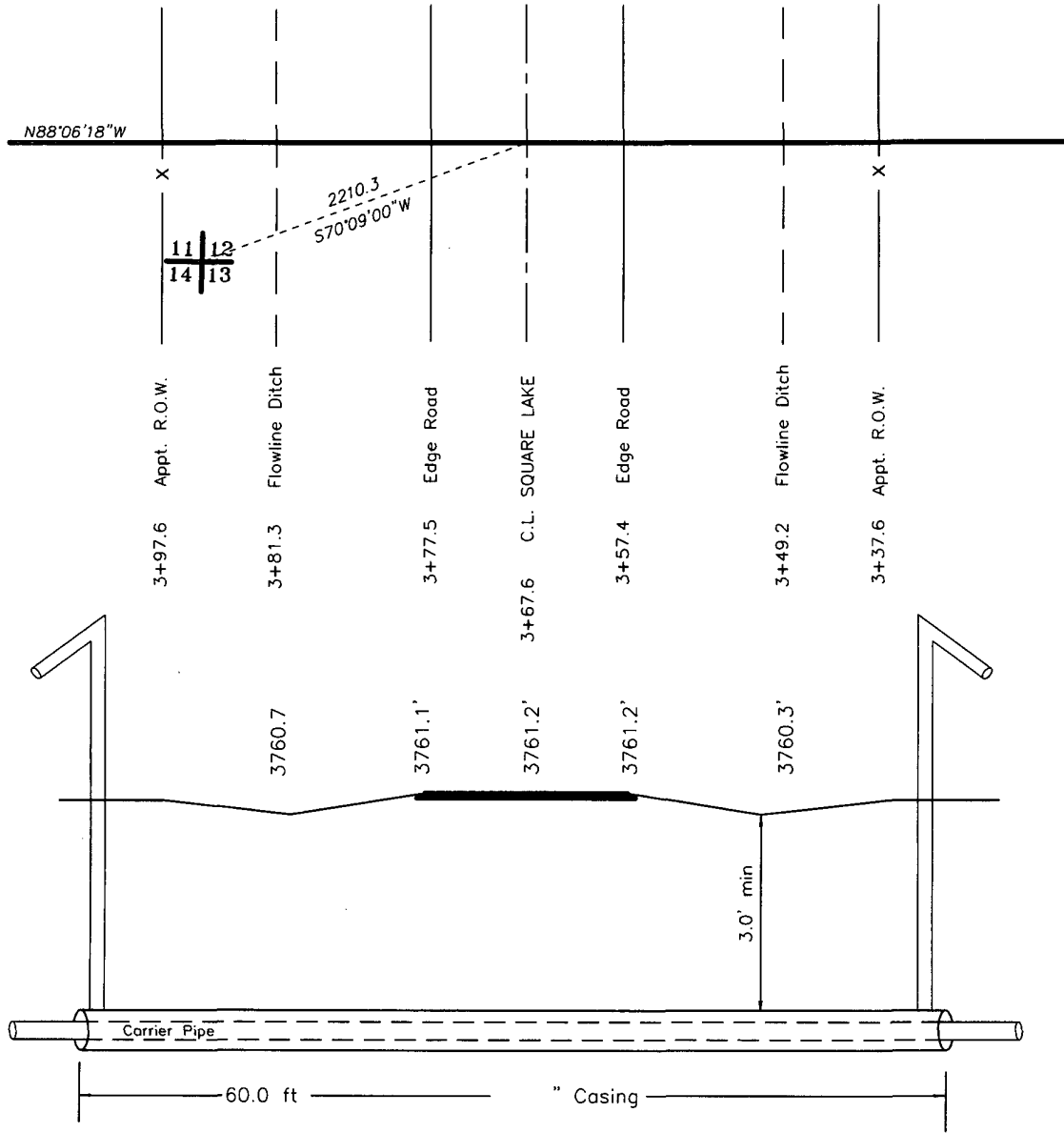
**BURNETT OIL COMPANY, INC.**

REF: PROPOSED FLOWLINE TO THE GISSLER "A" #39

A FLOWLINE CROSSING USA LAND IN  
SECTIONS 11&12, TOWNSHIP 17 SOUTH, RANGE 30 EAST,  
N.M.P.M., EDDY COUNTY, NEW MEXICO.

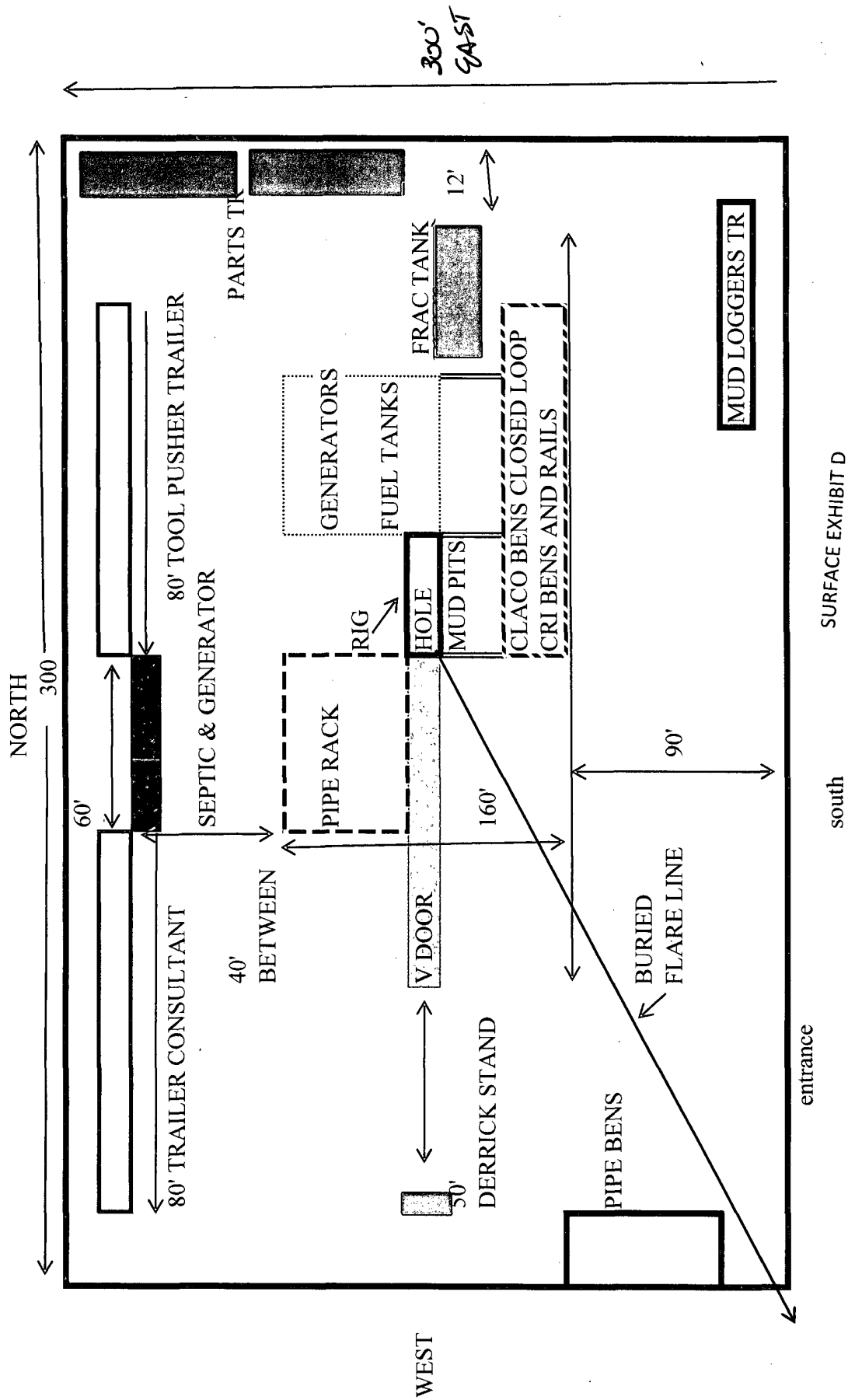
Survey Date: 01-05-2011 Sheet 1 of 1 Sheets



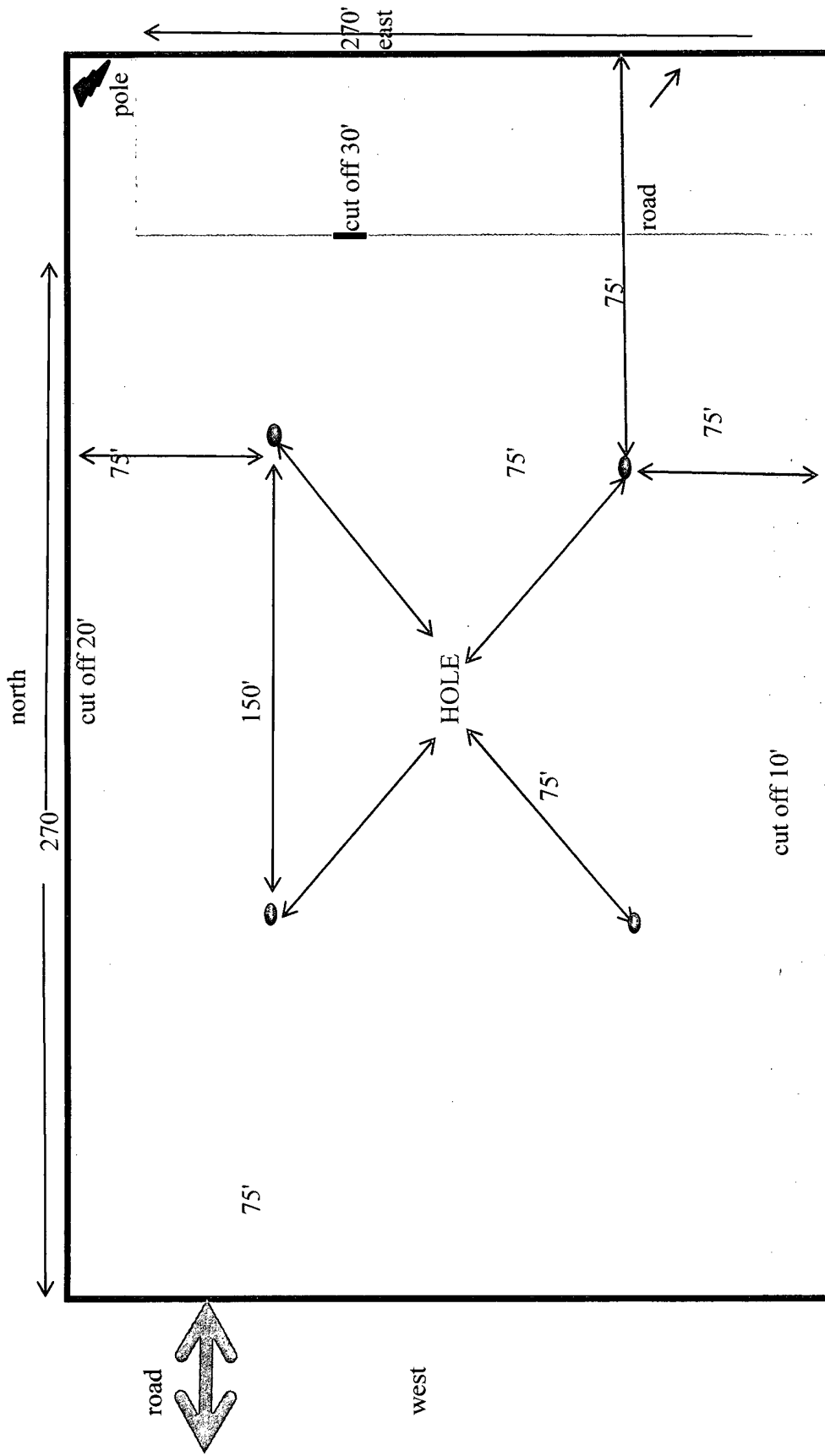


surface exhibit C2

	Carrier Pipe	Casing Pipe	CROSSING OF CO. RD. SQUARE LAKE
Contents			<b>BURNETT OIL COMPANY, INC.</b>
O.D.			REF: PROPOSED FLOWLINE TO THE GISSLER "A" #39
I.D.			A ROAD CROSSING IN SECTION 12, TOWNSHIP 17 SOUTH, RANGE 30 EAST, N.M.P.M. EDDY COUNTY, NEW MEXICO.
Material			
W.T.			
Grade			



Gissler A 39  
 Drill Pad Layout



south

Gisslen A 39  
Surface Use  
Reclamation Ex. F

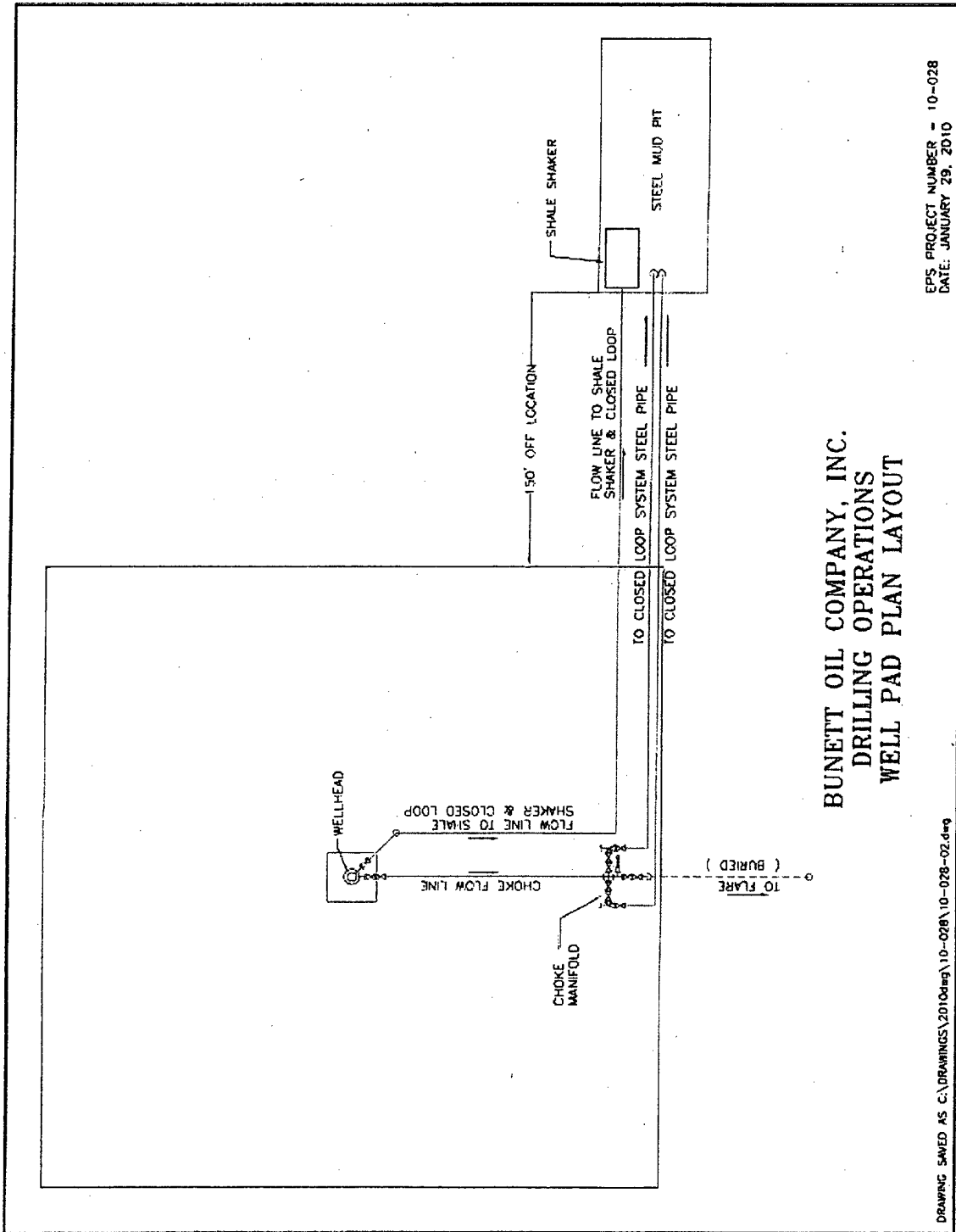


Exhibit 27