

DISTRICT I
1625 N. French Dr., Hobbs, NM 88240
DISTRICT II
1301 W. Grand Avenue, Artesia, NM 88210

DISTRICT III
1000 Rio Brazos Rd., Aztec, NM 87410

DISTRICT IV
1220 S. St. Francis Dr., Santa Fe, NM 87505

State of New Mexico
Energy, Minerals and Natural Resources Department

Form C-102
Revised July 16, 2010

Submit one copy to appropriate
District Office

OIL CONSERVATION DIVISION
1220 South St. Francis Dr.
Santa Fe, New Mexico 87505

WELL LOCATION AND ACREAGE DEDICATION PLAT

☐ AMENDED REPORT

API Number 30-015-38474	Pool Code 97565	Pool Name N. Seven Rivers Glorieta, Veso
Property Code 38496	Property Name QUICK DRAW "22" DE	Well Number 1H
GRID No. 14744	Operator Name MEWBOURNE OIL COMPANY	Elevation 3451'

Surface Location

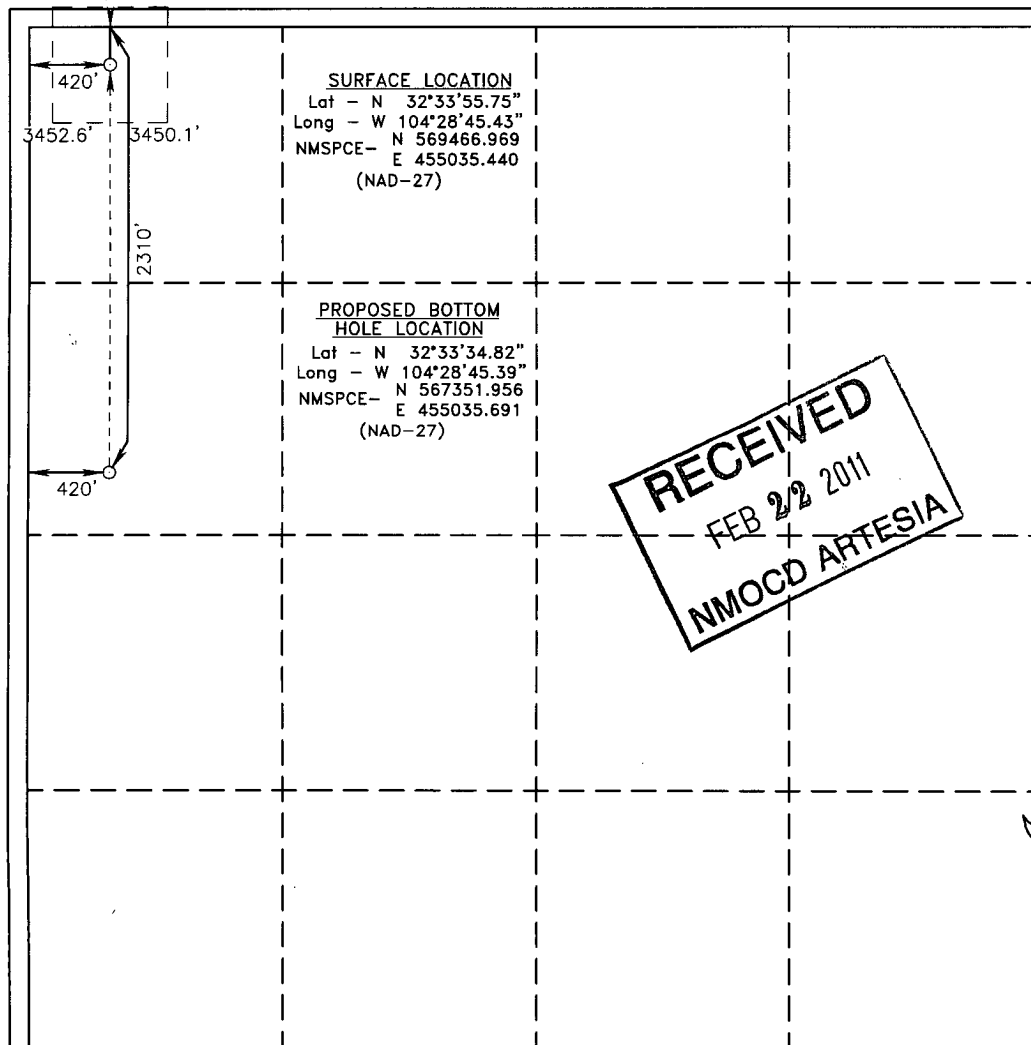
UL or lot No.	Section	Township	Range	Lot Idn	Feet from the	North/South line	Feet from the	East/West line	County
D	22	20 S	25 E		195	NORTH	420	WEST	EDDY

Bottom Hole Location If Different From Surface

UL or lot No.	Section	Township	Range	Lot Idn	Feet from the	North/South line	Feet from the	East/West line	County
E	22	20 S	25 E		2310	NORTH	420	WEST	EDDY

Dedicated Acres 80	Joint or Infill	Consolidation Code	Order No.
------------------------------	-----------------	--------------------	-----------

NO ALLOWABLE WILL BE ASSIGNED TO THIS COMPLETION UNTIL ALL INTERESTS HAVE BEEN CONSOLIDATED
OR A NON-STANDARD UNIT HAS BEEN APPROVED BY THE DIVISION



OPERATOR CERTIFICATION
I hereby certify that the information contained herein is true and complete to the best of my knowledge and belief, and that this organization either owns a working interest or unleased mineral interest in the land including the proposed bottom hole location or has a right to drill this well at this location pursuant to a contract with an owner of such a mineral or working interest, or to a voluntary pooling agreement or a compulsory pooling order heretofore entered by the division.

Jackie Lathan 2/16/11
Signature Date

Jackie Lathan
Printed Name

jathan@mewbourne.com
Email Address

SURVEYOR CERTIFICATION
I hereby certify that the well location shown on this plat was plotted from field notes of actual surveys made by me or under my supervision, and that the same is true and correct to the best of my belief.

JANUARY JONES 2011
Date Surveyed

ME MEXICO
Signature Seal of Professional Surveyor 7977

7977
Certificate No.

Basin Surveys 24105

MEWBOURNE OIL COMPANY

701 S. CECIL
PO BOX 5270
HOBBS, NM 88240
(575) 393-5905
(575) 397-6252 FAX

February 16, 2011

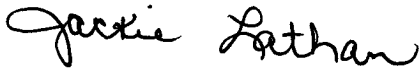
OIL CONSERVATION DIVISION
1301 W. GRAND AVENUE
ARTESIA, NM 88210

RE: Quick Draw 22 DE #1H

Mewbourne Oil Company has submitted an APD electronically on 02/16/11. Please find enclosed a C-144 CLEZ, Directional plan, & C-102 showing surface & bottom hole locations.

If you have any questions please call me @ 575-393-5905.

Thank you,



Jackie Lathan
Mewbourne Oil Company
Hobbs Regulatory
575-393-5905
jlathan@mewbourne.com

