

**BURNETT OIL CO., INC. EMERGENCY NOTIFICATION LIST**

**Burnett's New Mexico Office** (575) 677-2313  
**Belton Mathews BOCI District Superintendent** CELL (575) 703-9601  
 BURNETT OIL HOME OFFICE (817) 332-5108  
**Mark Jacoby BOCI ENGINEERING MANAGER** CELL (817) 312-2751

**EDDY COUNTY SHERIFF** 911 OR (575) 746-9888  
**NEW MEXICO STATE POLICE** (575) 746-2701

**Loco Hills Fire Department (VOLUNTEER ONLY)** 911 OR (575) 677 2349  
**For Medical and Fire** (575) 746-2701 (ARTESIA)

**Flight for Life Air Ambulance (LUBBOCK)** (806) 743-9911  
**Aerocare Air Ambulance (LUBBOCK)** (806) 747-8923  
**Med Flight Air Ambulance (ALBUQ)** (505) 842-4433  
**S B Med Svc Air Ambulance (ALBUQ)** (505) 842-4949

**US Bureau of Land Management Carlsbad** (575) 361-2822 (575) 234-5972  
**New Mexico Oil Conversation Division** ARTESIA (575) 748-1283  
**New Mexico Emergency Response Commission** 24 HR (575) 827-9126  
**New Mexico State Emergency Operation Center** (575) 476-9635  
**Local Emergency Planning Committee (Artesia)** (575) 746-2122  
**National Emergency Response Center (Washington, DC)** (800) 424-8802

**Boots & Coots IWC** (800) 256-9688  
**Cudd Pressure Control** (432) 570-5300  
**Halliburton Svc** (575) 746-2757  
**B J Svc** (575) 746-2293

**THIS MUST BE POSTED AT THE RIG WHILE ON LOCATION.**

**Burnett Office 87 SQUARE LAKE ROAD (CR #220), Loco Hills, New Mexico 88255**  
 (Loco Hills, New Mexico (2 MILES East of Loco Hills On US Hwy 82 TO C#220 Then  
 North On CR# 220 Approx One Mile To Office.).

## HYDROGEN SULFIDE (H<sub>2</sub>S) CONTINGENCY PLAN

ASSUMED 100 PPM ROE = 3000'

### Emergency Procedures

**In the event of a release of gas containing H<sub>2</sub>S, The first responder(s) must**

- \* Isolate the area and prevent entry by other persons into the 100 PPM ROE.
- \* Evacuate any public places encompassed by 100 PPM ROE.
- \* Be equipped with H<sub>2</sub>S monitors and air packs in order to control release.
- \* Use the "buddy system" to ensure no injuries occur during the response.
- \* Take precautions to avoid personal injury during this operation.
- \* Have received training in the following:
  1. H<sub>2</sub>S detection
  2. Measures for protection against this gas
  3. Equipment used for protection and emergency response.

### Ignition of Gas Source

Should control of the well be considered lost and ignition considered, take care to protect against exposure to Sulfur Dioxide (SO<sub>2</sub>.) Intentional ignition must be coordinated with the NMOCD and local officials. Additionally the New Mexico State Police may become involved. NM State Police shall be the incident command on scene of any major release. Take care to protect downwind whenever there is an ignition of gas.

### **Characteristics of H<sub>2</sub>S and SO<sub>2</sub>**

Common Name	Chemical Formula	Specific Gravity	Threshold Limit	Hazardous Limit	Lethal Concentration
Hydrogen Sulfide	H <sub>2</sub> S	1.189 Air = 1	10 ppm	100 ppm/hr	600 ppm
Sulfur Dioxide	SO <sub>2</sub>	2.21 Air = 1	2 ppm	NA	1000 ppm

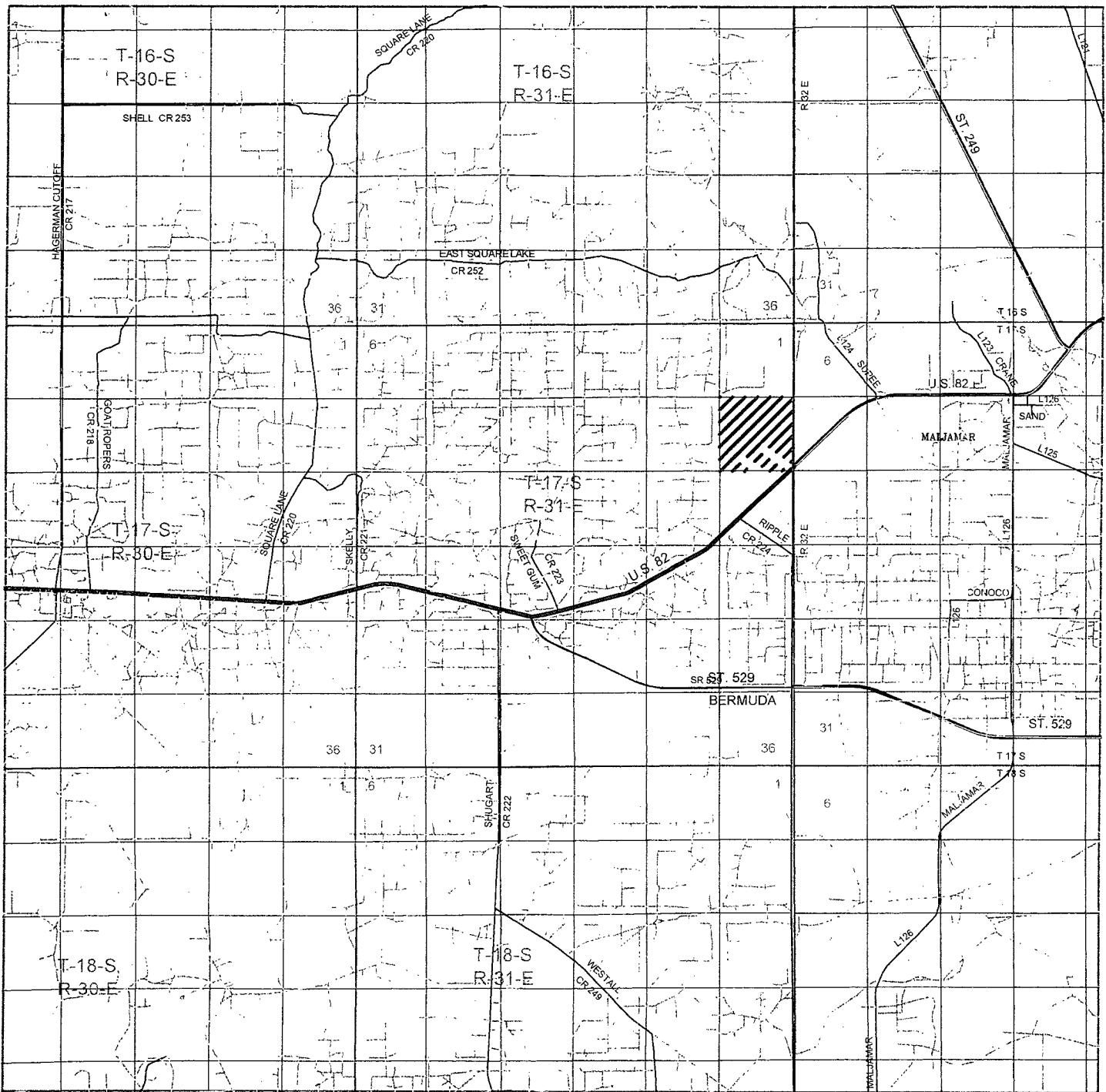
### **Contacting Authorities**

Burnett Oil Co., Inc. personnel must liaison with local and state agencies to ensure a proper response to a major release. Additionally, the OCD must be notified of the release as soon as possible but no later than 4 hours. Agencies will ask for information such as type and volume of release, wind and direction, location of release, etc. **Be sure all is written down and ready to give to contact list (Drilling Exhibit A.) Directions to the site are below.** Burnett's response must be in coordination with the State of New Mexico's Hazardous Materials Emergency Response Plan.

**Burnett Office 87 SQUARE LAKE ROAD (CR #220), Loco Hills, New Mexico 88255  
(Loco Hills, New Mexico (2 MILES East of Loco Hills On US Hwy 82 TO C#220 Then North On CR# 220 Approx One Mile To Office**

**BURNETT OIL CO., INC.**

DRILLING EXHIBIT B

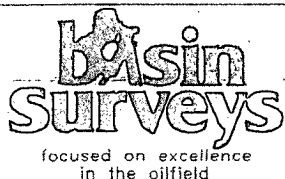


# **NOSLER FEDERAL #1**

**SURFACE EXHIBIT A**

Located 330' FSL and 840' FWL

Section 12, Township 17 South, Range 31 East,  
N.M.P.M., Eddy County, New Mexico.



P.O. Box 1786  
1120 N. West County Rd.  
Hobbs, New Mexico 88241  
(575) 393-7316 - Office  
(575) 392-2206 - Fax  
basinsurveys.com

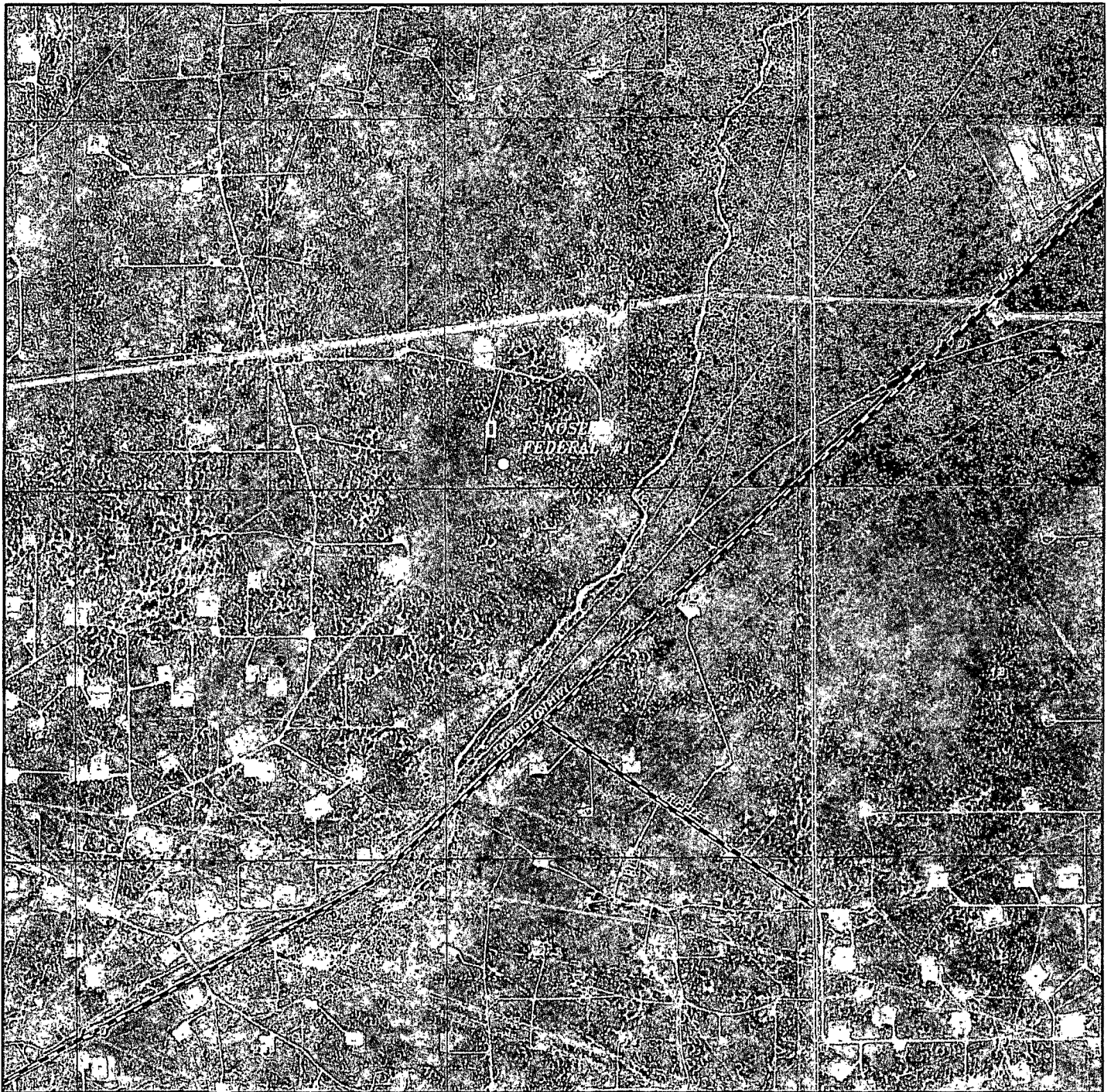
W.O. Number: JMS 24191

Survey Date: 02-18-2011

Scale: 1" = 2 Miles

Date: 02-25-2011

**BURNETT OIL  
COMPANY, INC.**

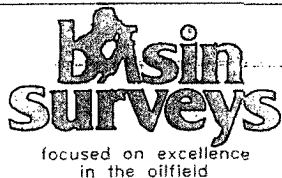


## NOSLER FEDERAL #1

SURFACE EXHIBIT A2

Located 330' FSL and 840' FWL

Section 12, Township 17 South, Range 31 East,  
N.M.P.M., Eddy County, New Mexico.



P.O. Box 1786  
1120 N. West County Rd.  
Hobbs, New Mexico 88241  
(575) 393-7316 - Office  
(575) 392-2206 - Fax  
basinsurveys.com

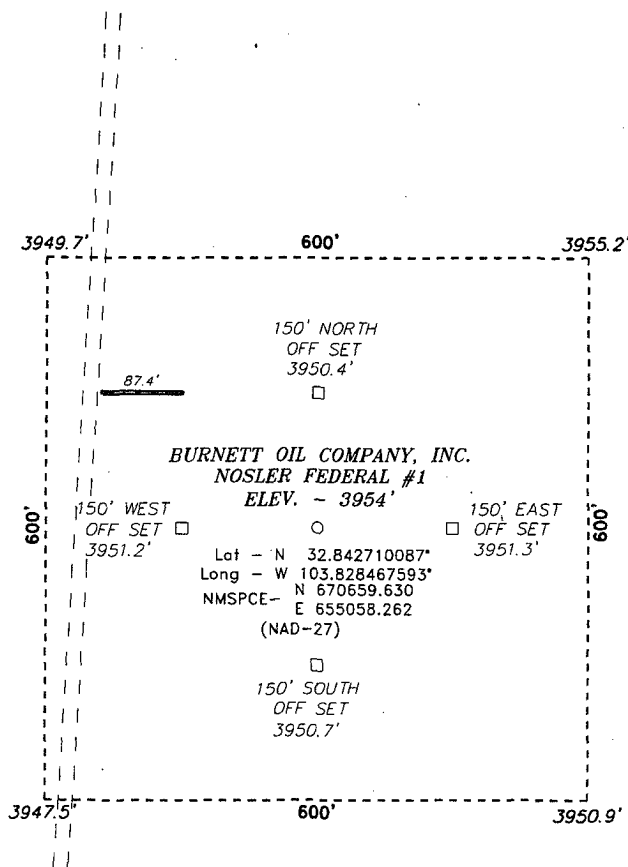
W.O. Number: JMS 24191

Scale: 1" = 2000'

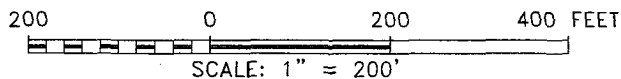
YELLOW TINT - USA LAND  
BLUE TINT - STATE LAND  
NATURAL COLOR - FEE LAND

**BURNETT OIL  
COMPANY, INC.**

SECTION 12, TOWNSHIP 17 SOUTH, RANGE 31 EAST, N.M.P.M.,  
EDDY COUNTY, NEW MEXICO.



SURFACE EXHIBIT C



Directions to Location:

FROM MILE MARKER 141 OF HWY 82, GO WEST 0.5 MILES TO LEASE ROAD, ON LEASE ROAD GO NORTHWEST 0.2 MILES TO LEASE ROAD, ON LEASE ROAD GO NORTH 0.2 MILES, THENCE EAST 0.4 MILES, THENCE NORTH 1.0 MILES THENCE EAST 0.6 MILES TO LEASE ROAD, ON LEASE ROAD GO SOUTH 0.2 MILES TO PROPOSED LEASE ROAD.

**BASIN SURVEYS** P.O. BOX 1786-HOBBS, NEW MEXICO

**BURNETT OIL COMPANY, INC.**

REF: NOSLER FEDERAL #1 / WELL PAD TOPO

THE NOSLER FEDERAL #1 LOCATED 330'

FROM THE SOUTH LINE AND 840' FROM THE WEST LINE OF  
SECTION 12, TOWNSHIP 17 SOUTH, RANGE 31 EAST,

N.M.P.M., EDDY COUNTY, NEW MEXICO.

W.O. Number: 24191

Drawn By: J. SMALL

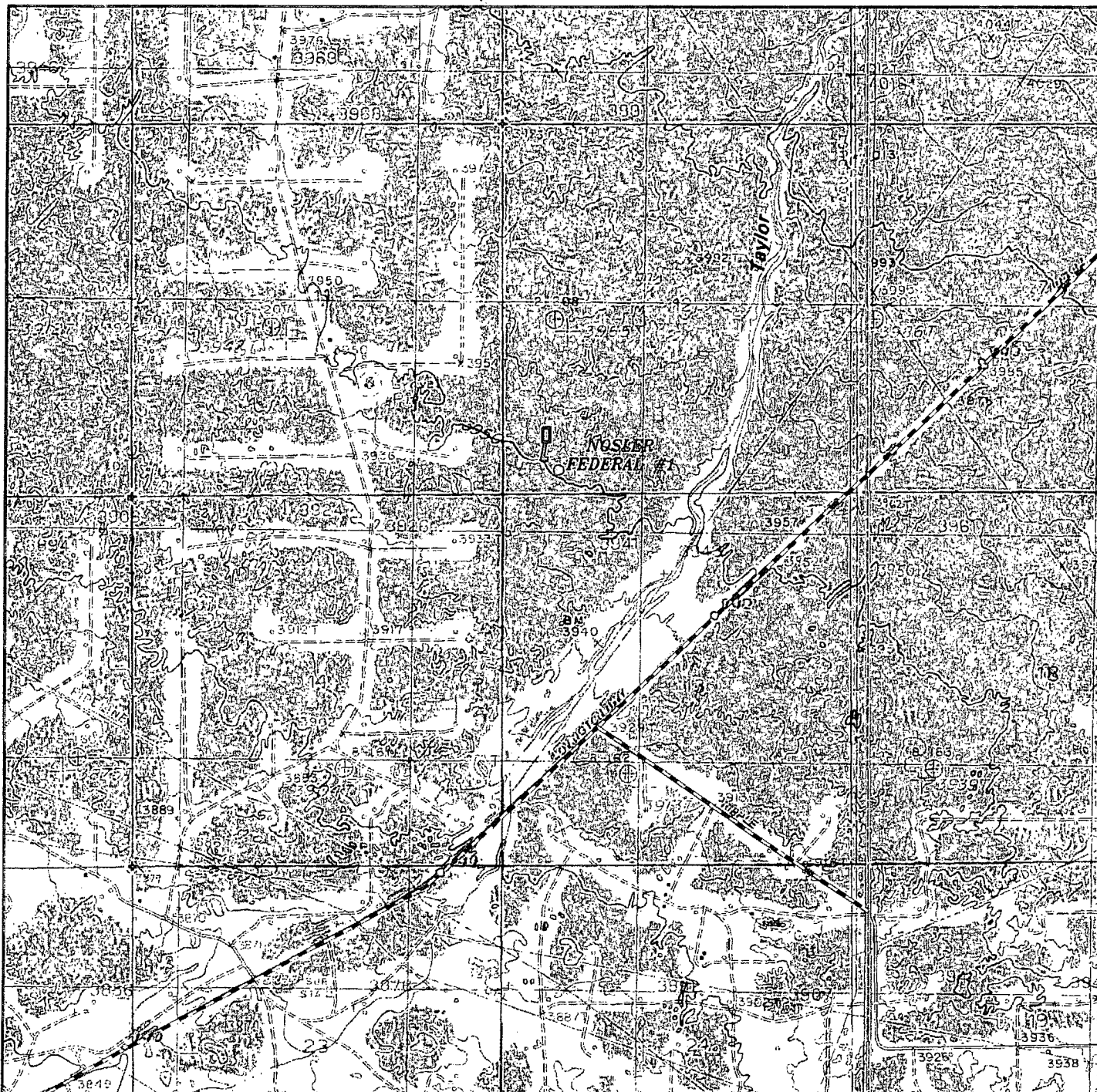
Date: 02-25-2011

Disk: JMS 24191

Survey Date: 02-18-2011

Sheet 1 of 1 Sheets





# **NOSLER FEDERAL #1**

**SURFACE EXHIBIT A1**

Located 330' FSL and 840' FWL

Section 12, Township 17 South, Range 31 East,  
N.M.P.M., Eddy County, New Mexico.

**basin**  
**surveys**

focused on excellence  
in the oilfield

P.O. Box 1786  
1120 N. West County Rd.  
Hobbs, New Mexico 88241  
(575) 393-7316 - Office  
(575) 392-2206 - Fax  
basinsurveys.com

W.O. Number: JMS 24191

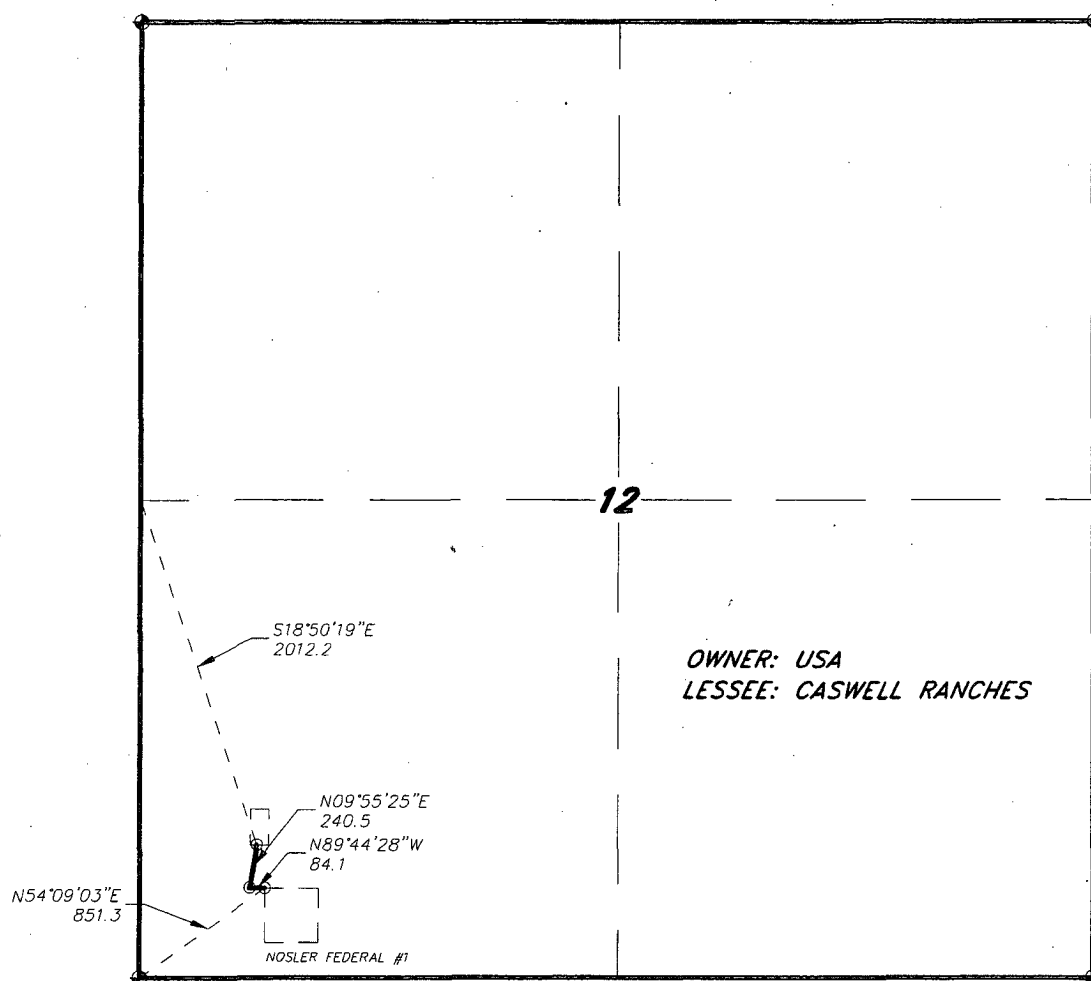
Survey Date: 02-18-2011

Scale: 1" = 2000'

Date: 02-25-2011

**BURNETT OIL**  
**COMPANY, INC.**

SECTION 12, TOWNSHIP 17 SOUTH, RANGE 31 EAST, N.M.P.M.,  
EDDY COUNTY, NEW MEXICO.



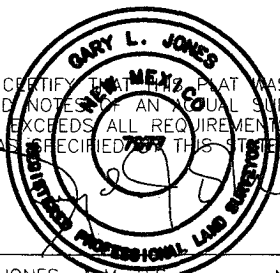
LEGAL DESCRIPTION

A STRIP OF LAND 30.0 FEET WIDE, LOCATED IN SECTION 12, TOWNSHIP 17 SOUTH, RANGE 31 EAST, N.M.P.M., EDDY COUNTY, NEW MEXICO AND BEING 15.0 FEET LEFT AND RIGHT OF THE ABOVE PLATTED CENTERLINE SURVEY.

SECTION 12 = 324.6 FEET  $\approx$  19.67 RODS = 0.06 MILES = 0.22 ACRES

SURFACE EXHIBIT C2

I HEREBY CERTIFY THAT THIS PLAT WAS PREPARED  
FROM FIELD NOTES OF AN ACTUAL SURVEY AND  
MEETS OR EXCEEDS ALL REQUIREMENTS FOR LAND  
SURVEYS AS SPECIFIED BY THIS STATE.



GARY L. JONES N.M. L.S. No. 7977  
TEXAS P.L.S. No. 5074

**BASIN SURVEYS** P.O. BOX 1786 - HOBBS, NEW MEXICO

W.O. Number: 24191 Drawn By: J. M. SMALL

Date: 02-25-2011 Disk: JMS 24191

1000 0 1000 2000 FEET

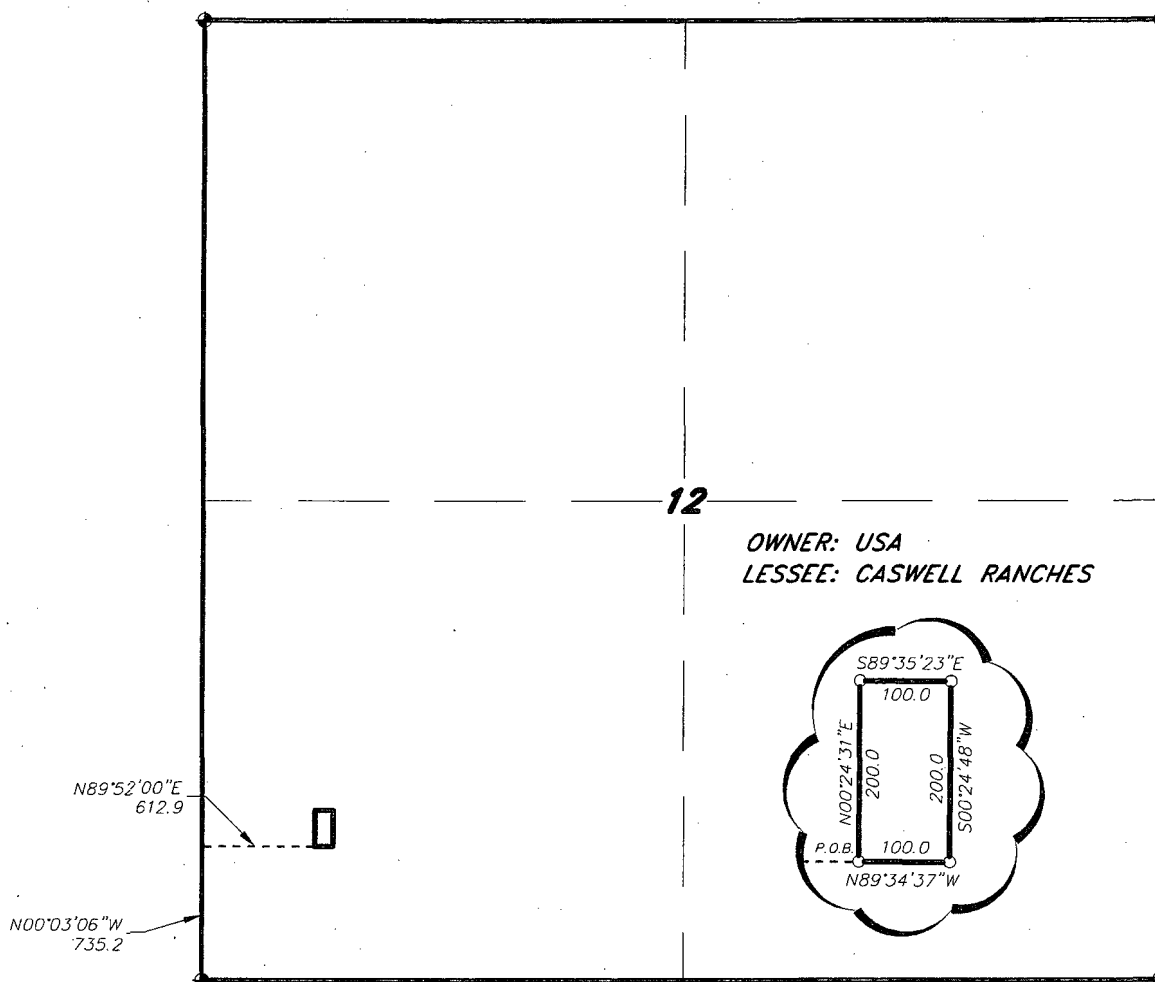
**BURNETT OIL COMPANY, INC.**

REF: PROPOSED FLOWLINE TO THE NOSLER FEDERAL #1

A FLOWLINE CROSSING USA LAND IN  
SECTION 12, TOWNSHIP 17 SOUTH, RANGE 31 EAST,  
N.M.P.M., EDDY COUNTY, NEW MEXICO.

Survey Date: 02-18-2011 Sheet 1 of 1 Sheets

SECTION 12, TOWNSHIP 17 SOUTH, RANGE 31 EAST, N.M.P.M.,  
EDDY COUNTY, NEW MEXICO.



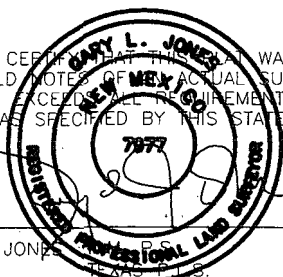
LEGAL DESCRIPTION

A TRACT OF LAND LOCATED IN SECTION 12, TOWNSHIP 17 SOUTH, RANGE 31 EAST, N.M.P.M., EDDY COUNTY, NEW MEXICO AND BEING MORE PARTICULARLY DESCRIBED AS FOLLOWS:

BEGINNING AT A POINT WHICH LIES N.00°03'06\"W, 735.2 FEET AND N.89°52'00\"E., 612.9 FEET FROM THE SOUTHWEST CORNER OF SAID SECTION 12; THENCE N.00°24'31\"E., 200.0 FEET; THENCE S.89°35'23\"E., 100.0 FEET; THENCE S.00°24'48\"W. 200.0 FEET; THENCE N.89°34'37\"W, 100.0 FEET TO THE POINT OF BEGINNING. SAID TRACT OF LAND BEING 0.46 ACRES, MORE OR LESS.

TANK BATTERY EXHIBIT

I HEREBY CERTIFY THAT THIS MAP WAS PREPARED FROM FIELD NOTES OF AN ACTUAL SURVEY AND MEETS OR EXCEEDS ALL REQUIREMENTS FOR LAND SURVEYS AS SPECIFIED BY THIS STATE.



GARY L. JONES, P.S. No. 7977  
TEXAS LAND SURVEYOR No. 5074

**BASIN SURVEYS** P.O. BOX 1786—HOBBS, NEW MEXICO

W.O. Number: 24191 Drawn By: J. M. SMALL

Date: 02-25-2011 Disk: JMS 24191

1000 0 1000 2000 FEET

**BURNETT OIL COMPANY, INC.**

REF: *WASLER A* TANK BATTERY

A TANK BATTERY LOCATED ON USA LAND IN  
SECTION 12, TOWNSHIP 17 SOUTH, RANGE 31 EAST,  
N.M.P.M., EDDY COUNTY, NEW MEXICO.

Survey Date: 02-18-2011 Sheet 1 of 1 Sheets