

DISTRICT I
1625 N. FRENCH DR., HOBBS, NM 88240
DISTRICT II
1301 W. GRAND AVENUE, ARTESIA, NM 88210
DISTRICT III
1000 RIO BRAZOS RD., AZTEC, NM 87410
DISTRICT IV
11885 S. ST. FRANCIS DR., SANTA FE, NM 87505

State of New Mexico
Energy, Minerals & Natural Resources Department
OIL CONSERVATION DIVISION
1220 South St. Francis Dr.
Santa Fe, New Mexico 87505

Form C-102
Revised July 16, 2010
Submit to Appropriate
District Office

☐ AMENDED REPORT

WELL LOCATION AND ACREAGE DEDICATION PLAT

API Number 30-015-39021	Pool Code 22040	Pool Name Empire; ABO
Property Code 309164	Property Name EMPIRE ABO UNIT	Well Number 411
OGRID No. 873	Operator Name APACHE CORPORATION	Elevation 3664'

Surface Location

UL or lot No. D(4)	Section 6	Township 18-S	Range 28-E	Lot Idn	Feet from the 40	North/South line NORTH	Feet from the 145	East/West line WEST	County EDDY
------------------------------	---------------------	-------------------------	----------------------	---------	----------------------------	----------------------------------	-----------------------------	-------------------------------	-----------------------

Bottom Hole Location If Different From Surface

UL or lot No.	Section	Township	Range	Lot Idn	Feet from the	North/South line	Feet from the	East/West line	County
Dedicated Acres 43.8		Joint or Infill	Consolidation Code	Order No.					

NO ALLOWABLE WILL BE ASSIGNED TO THIS COMPLETION UNTIL ALL INTERESTS HAVE BEEN CONSOLIDATED OR A NON-STANDARD UNIT HAS BEEN APPROVED BY THE DIVISION

LOT 4 145' 40'	LOT 3	LOT 2	LOT 1
LOT 5	<div>RECEIVED MAY 11 2011 NMOCD ARTESIA</div> GEODETIC COORDINATES NAD 27 NME SURFACE LOCATION Y=648600.0 N X=534055.6 E LAT.=32.783043° N LONG.=104.222523° W LAT.=32° 46' 59" N LONG.=104° 13' 21" W		
LOT 6			
LOT 7			

OPERATOR CERTIFICATION

I hereby certify that the information herein is true and complete to the best of my knowledge and belief, and that this organization either owns a working interest or unleased mineral interest in the land including the proposed bottom hole location or has a right to drill this well at this location pursuant to a contract with an owner of such mineral or working interest, or to a voluntary pooling agreement or a compulsory pooling order heretofore entered by the division.

Sorina L. Flores 5/9/11
Signature Date

Sorina L. Flores
Printed Name

Sorina.L.Flores@apachecorp.com
E-mail Address

SURVEYOR CERTIFICATION

I hereby certify that the well location shown on this plat was plotted from field notes of actual surveys made by me or under my supervision, and that the same is true and correct to the best of my belief.

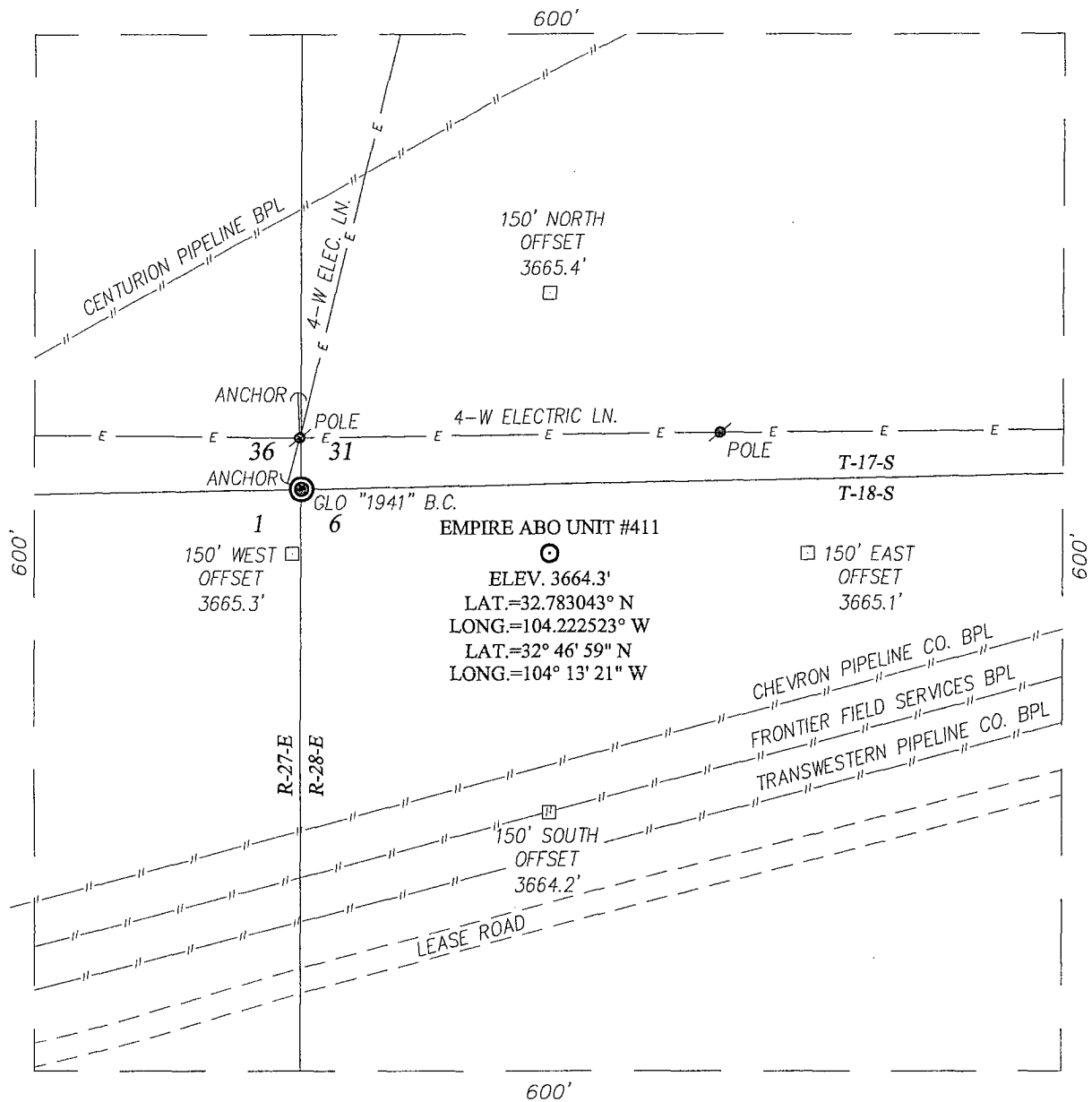
APRIL 15, 2011

Date of Survey
Signature & Seal of Professional Surveyor:

RONALD J. EIDSON
NEW MEXICO
3239
Ronald J. Eidson 4/28/2011
Certificate Number
Gary G. Eidson 12641
Ronald J. Eidson 3239
DSS JWSC W.O.: 11.11.0837

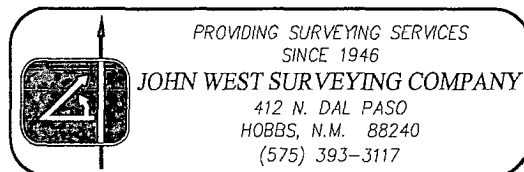
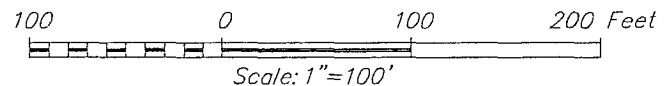
SECTION 6, TOWNSHIP 18 SOUTH, RANGE 28 EAST, N.M.P.M.

EDDY COUNTY NEW MEXICO



DIRECTIONS TO LOCATION

FROM THE INTERSECTION OF U.S. HIGHWAY #82 AND CO. RD. #204 (HILLTOP RD.), GO SOUTH ON CO. RD. #204 APPROX. 2.2 MILES. TURN RIGHT AND GO WEST APPROX. 0.1 MILE. THIS LOCATION STAKE IS APPROX. 200 FEET SOUTH OF LEASE ROAD.

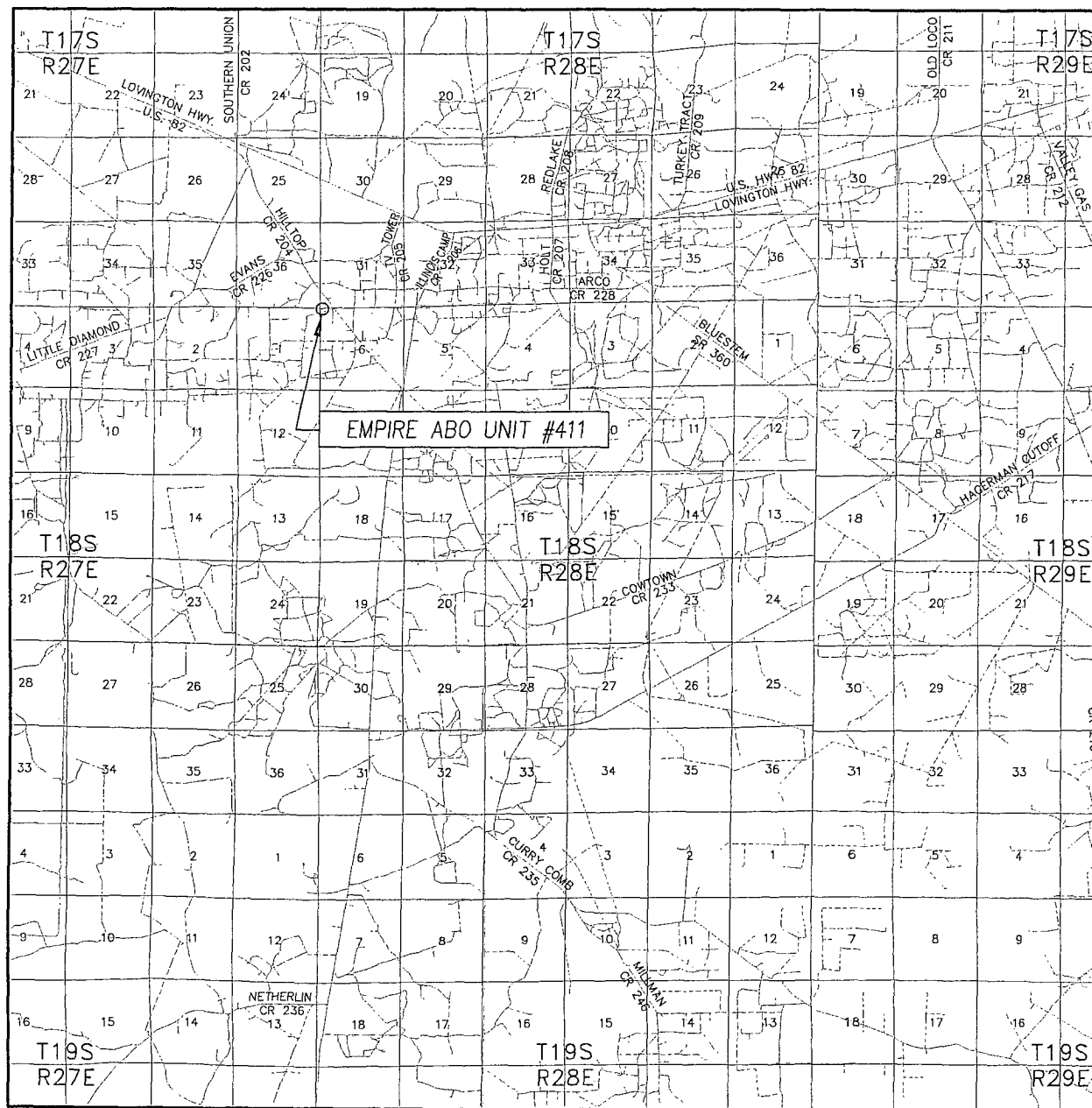


APACHE CORPORATION

EMPIRE ABO UNIT #411 WELL
LOCATED 40 FEET FROM THE NORTH LINE
AND 145 FEET FROM THE WEST LINE OF SECTION 6,
TOWNSHIP 18 SOUTH, RANGE 28 EAST, N.M.P.M.,
EDDY COUNTY, NEW MEXICO

Survey Date: 4/15/11	Sheet 1 of 1 Sheets
W.O. Number: 11.11.0837	Dr. By: DSS
Date: 4/25/11	Rel. W.O.: 11110837
	Scale: 1"=100'

VICINITY MAP



SCALE: 1" = 2 MILES

SEC. 6 TWP. 18-S RGE. 28-E

SURVEY N.M.P.M.

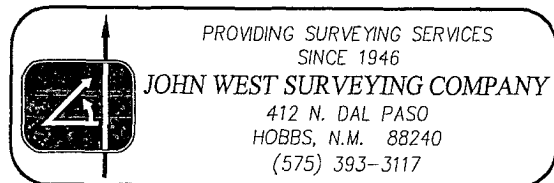
COUNTY EDDY STATE NEW MEXICO

DESCRIPTION 40' FNL & 145' FWL

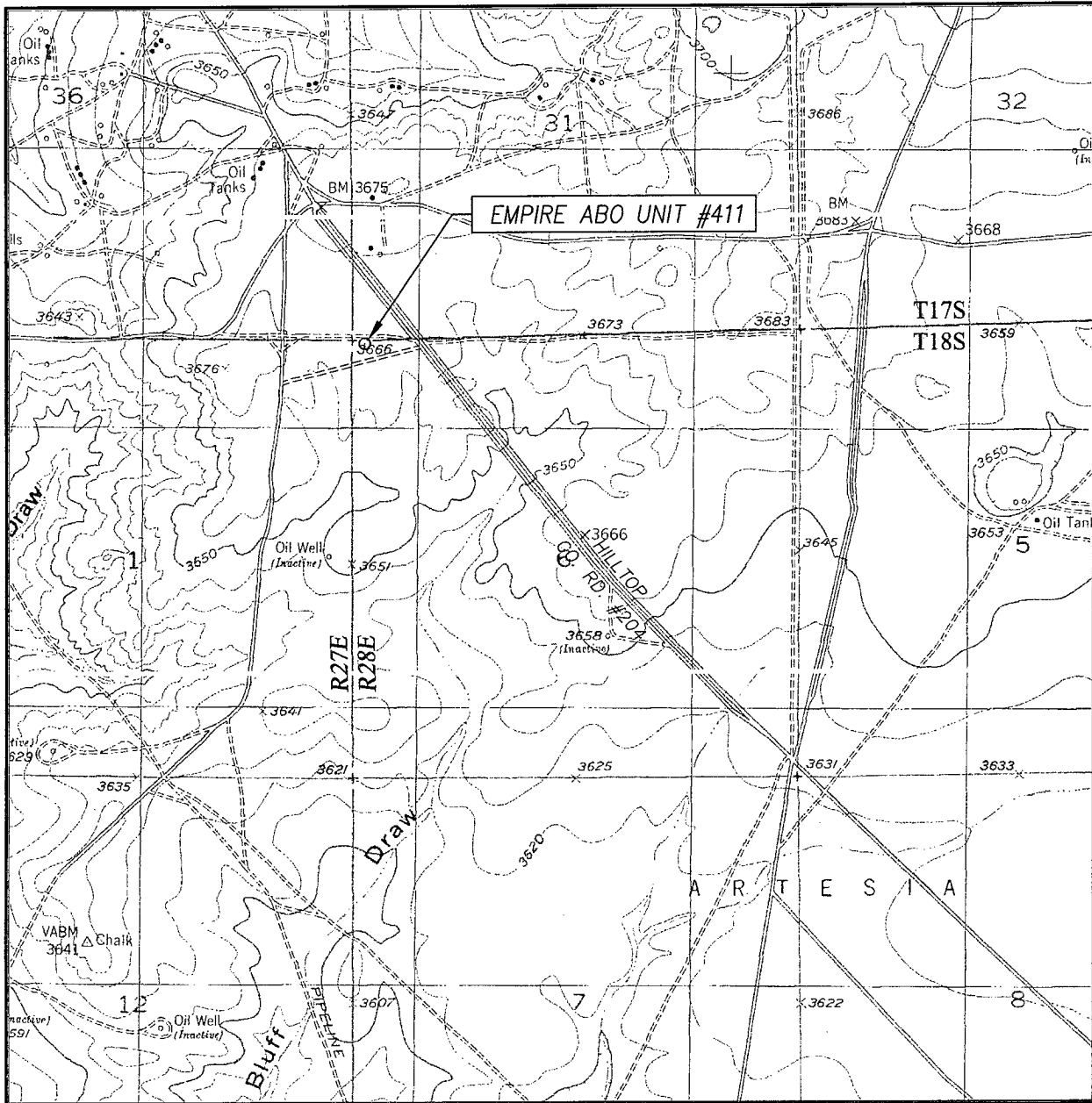
ELEVATION 3664'

OPERATOR APACHE CORPORATION

LEASE EMPIRE ABO UNIT



LOCATION VERIFICATION MAP



SCALE: 1" = 2000'

CONTOUR INTERVAL:
RED LAKE, N.M. - 10'

SEC. 6 TWP. 18-S RGE. 28-E

SURVEY N.M.P.M.

COUNTY EDDY STATE NEW MEXICO

DESCRIPTION 40' FNL & 145' FWL

ELEVATION 3664'

OPERATOR APACHE CORPORATION

LEASE EMPIRE ABO UNIT

U.S.G.S. TOPOGRAPHIC MAP
RED LAKE, N.M.

