

DISTRICT I  
1825 N. French Dr., Hobbs, NM 88240  
DISTRICT II  
1301 W. Grand Avenue, Artesia, NM 88210

DISTRICT III  
1000 Rio Brazos Rd., Aztec, NM 87410

DISTRICT IV  
1220 S. St. Francis Dr., Santa Fe, NM 87505

State of New Mexico  
Energy, Minerals and Natural Resources Department

Form C-102  
Revised July 16, 2010

Submit one copy to appropriate  
District Office

OIL CONSERVATION DIVISION

1220 South St. Francis Dr.  
Santa Fe, New Mexico 87505

WELL LOCATION AND ACREAGE DEDICATION PLAT

☐ AMENDED REPORT

API Number <b>30-015-39052</b>	Pool Code <b>96210</b>	Pool Name <b>Empire; Glorieta-Yeso</b>
Property Code <b>38581</b> ✓	Property Name <b>PERE MARQUETTE 18 FEDERAL</b> ✓	Well Number <b>6</b> ✓
OGRID No. <b>162683</b> ✓	Operator Name <b>CIMAREX ENERGY CO. OF COLORADO</b> ✓	Elevation <b>3681'</b>

Surface Location

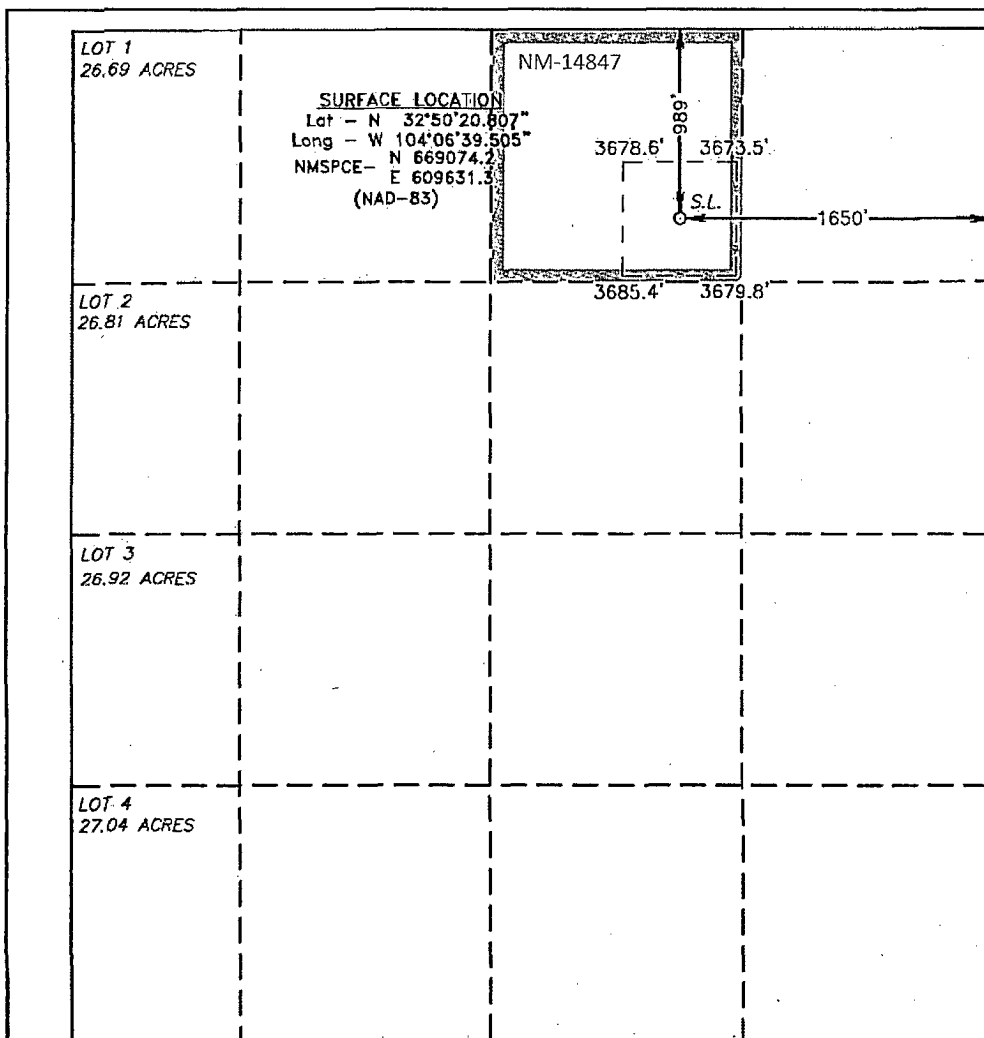
UL or lot No.	Section	Township	Range	Lot Idn	Feet from the	North/South line	Feet from the	East/West line	County
B	18	17 S	29 E		989	NORTH	1650	EAST	EDDY

Bottom Hole Location If Different From Surface

UL or lot No.	Section	Township	Range	Lot Idn	Feet from the	North/South line	Feet from the	East/West line	County

Dedicated Acres	Joint or Infill	Consolidation Code	Order No.
40			

NO ALLOWABLE WILL BE ASSIGNED TO THIS COMPLETION UNTIL ALL INTERESTS HAVE BEEN CONSOLIDATED  
OR A NON-STANDARD UNIT HAS BEEN APPROVED BY THE DIVISION



OPERATOR CERTIFICATION

I hereby certify that the information contained herein is true and complete to the best of my knowledge and belief, and that this organization either owns a working interest or unleased mineral interest in the land including the proposed bottom hole location or has a right to drill this well at this location pursuant to a contract with an owner of such a mineral or working interest, or to a voluntary pooling agreement or a compulsory pooling order heretofore entered by the division.

*Zeno Farris* 2/4/2011  
Signature Date

Zeno Farris

Printed Name  
zfarris@cimarex.com

Email Address

SURVEYOR CERTIFICATION

I hereby certify that the well location shown on this plat was plotted from field notes of actual surveys made by me or under my supervision and that the same is true and correct to the best of my belief.

JANUARY 14 2011  
Date Surveyed  
Signature & Seal of  
Professional Surveyor  
W.O. [Signature]

Certificate No. Gary L. Jones 7977

BASIN SURVEYS 23850