

DISTRICT I
1625 N. French Dr., Hobbs, NM 88240

DISTRICT II
1301 W. Grand Avenue, Artesia, NM 88210

DISTRICT III
1000 Rio Brazos Rd., Aztec, NM 87410

DISTRICT IV
1220 S. St. Francis Dr., Santa Fe, NM 87505

State of New Mexico
Energy, Minerals and Natural Resources Department

Form C-102
Revised October 15, 2009

Submit one copy to appropriate
District Office

OIL CONSERVATION DIVISION
1220 South St. Francis Dr.
Santa Fe, New Mexico 87505

WELL LOCATION AND ACREAGE DEDICATION PLAT

☐ AMENDED REPORT

| | | |
|----------------------------|--|---|
| API Number 30-015-37878 | Pool Code 96217 | Pool Name WILLOW LAKE; BONE SPRING SOUTHEAST |
| Property Code 38645 | Property Name COOTER "16" STATE | Well Number 8H |
| OGRID No. 6137 | Operator Name DEVON ENERGY PRODUCTION COMPANY, L.P. | Elevation 3036' |

Surface Location

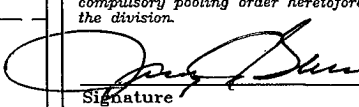
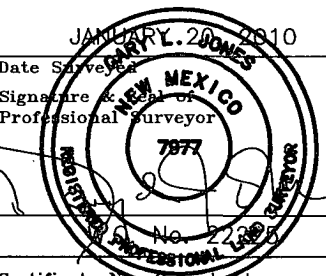
| UL or lot No. | Section | Township | Range | Lot Idn | Feet from the | North/South line | Feet from the | East/West line | County |
|---------------|---------|----------|-------|---------|---------------|------------------|---------------|----------------|--------|
| P | 16 | 25 S | 29 E | | 330 | SOUTH | 420 | EAST | EDDY |

Bottom Hole Location If Different From Surface

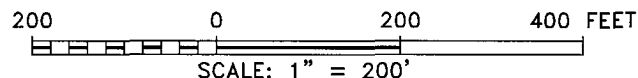
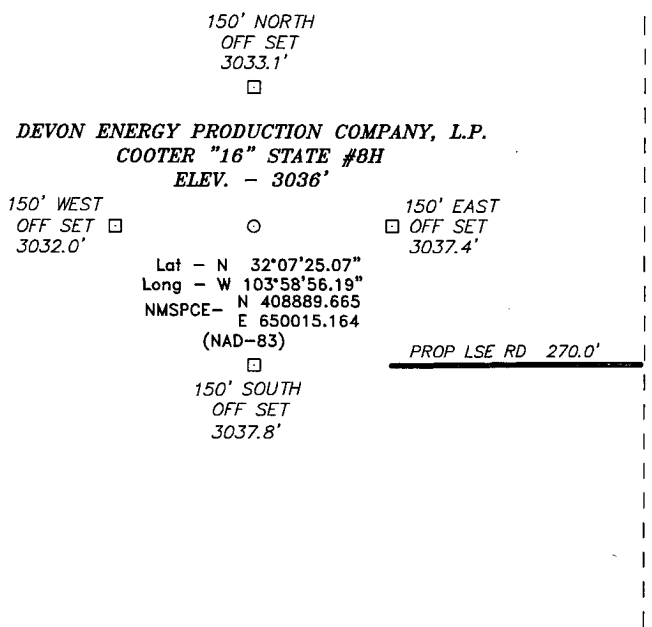
| UL or lot No. | Section | Township | Range | Lot Idn | Feet from the | North/South line | Feet from the | East/West line | County |
|---------------|---------|----------|-------|---------|---------------|------------------|---------------|----------------|--------|
| A | 16 | 25 S | 29 E | | 330 | NORTH | 417 | EAST | EDDY |

| | | | |
|------------------------|-----------------|--------------------|-----------|
| Dedicated Acres 320 | Joint or Infill | Consolidation Code | Order No. |
|------------------------|-----------------|--------------------|-----------|

NO ALLOWABLE WILL BE ASSIGNED TO THIS COMPLETION UNTIL ALL INTERESTS HAVE BEEN CONSOLIDATED
OR A NON-STANDARD UNIT HAS BEEN APPROVED BY THE DIVISION

| | | | |
|---|--|---|---|
| <p>N: 413853.5730 E: 645110.5070 LAT: N032°08'14.35" LONG: W103°59'53.05"</p> | <p>PROPOSED BOTTOM HOLE LOCATION Lat - N 32°08'11.13" Long - W 103°58'55.93" NMSPC- N 413544.198 E 650022.893 (NAD-83)</p> | <p>N: 413875.8720 E: 650420.8100 LAT: N032°08'14.40" LONG: W103°58'51.29"</p> | <p>OPERATOR CERTIFICATION I hereby certify that the information contained herein is true and complete to the best of my knowledge and belief, and that this organization either owns a working interest or unleased mineral interest in the land including the proposed bottom hole location or has a right to drill this well at this location pursuant to a contract with an owner of such a mineral or working interest, or to a voluntary pooling agreement or a compulsory pooling order heretofore entered by the division.  Signature _____ Date 4/12/11 Judy A. Barnett Regulatory Specialist Printed Name</p> |
| <p>RECEIVED APR 14 2011 NMOOD ARTESIA</p> | <p>Project Area Production Area</p> | <p>N: 411222.1980 E: 650437.5420 LAT: N032°07'48.14" LONG: W103°58'51.19"</p> | <p>SURVEYOR CERTIFICATION I hereby certify that the well location shown on this plat was plotted from field notes of actual surveys made by me or under my supervision, and that the same is true and correct to the best of my belief.  Date Surveyed Signature of Professional Surveyor Certificate No. 7977 BASIN SURVEYS</p> |
| <p>N: 408543.4960 E: 645141.5510 LAT: N032°07'21.80" LONG: W103°59'52.88"</p> | <p>PP: 318 FSL & 379 FEL</p> | <p>N: 408554.5920 E: 647798.3890 LAT: N032°07'21.82" LONG: W103°59'21.98"</p> | |

SECTION 16, TOWNSHIP 25 SOUTH, RANGE 29 EAST, N.M.P.M.,
EDDY COUNTY, NEW MEXICO.



Directions to Location:

FROM THE JUNCTION OF HWY 285 AND WHITE
THORN, GO EAST 4.0 MILES TO LEASE ROAD, GO
NORTHEAST 1.8 MILES THENCE NORTH 3.1 MILES TO
PROPOSED LEASE ROAD.

BASIN SURVEYS P.O. BOX 1786-HOBBS, NEW MEXICO

W.O. Number: 22225 Drawn By: J. SMALL

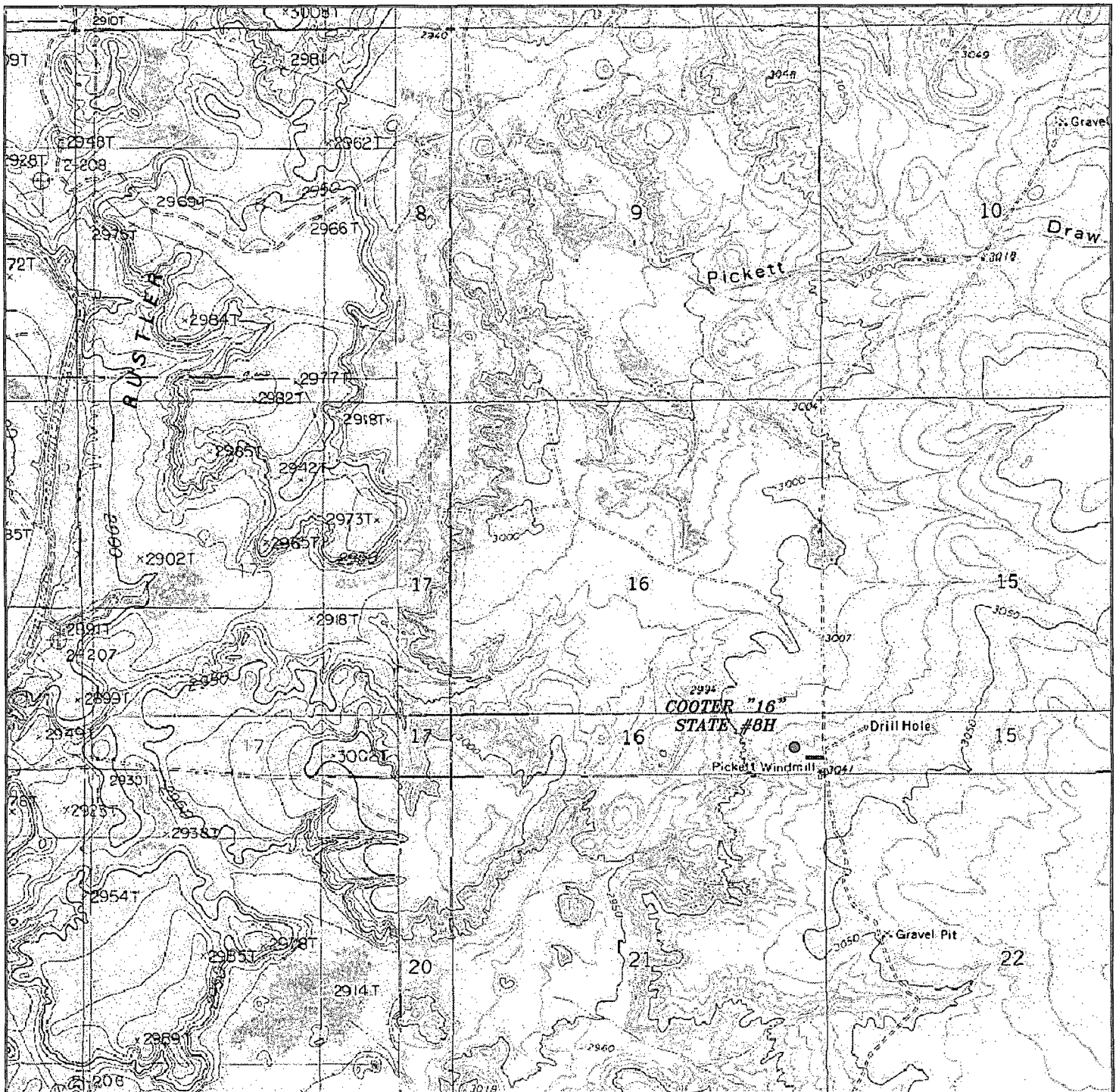
Date: 01-22-2010 Disk: JMS 22225

DEVON ENERGY PRODUCTION COMPANY, L.P.

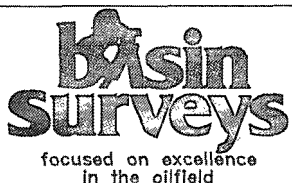
REF: COOTER "16" STATE #8H / WELL PAD TOPO

THE COOTER "16" STATE #8H LOCATED 330'
FROM THE SOUTH LINE AND 420' FROM THE EAST LINE OF
SECTION 16, TOWNSHIP 25 SOUTH, RANGE 29 EAST,
N.M.P.M., EDDY COUNTY, NEW MEXICO.

Survey Date: 01-20-2010 Sheet 1 of 1 Sheets



COOTER "16" STATE #8H
 Located 330' FSL and 420' FEL
 Section 16, Township 25 South, Range 29 East,
 N.M.P.M., Eddy County, New Mexico.



P.O. Box 1786
 1120 N. West County Rd.
 Hobbs, New Mexico 88241
 (575) 393-7316 - Office
 (575) 392-2206 - Fax
 basinsurveys.com

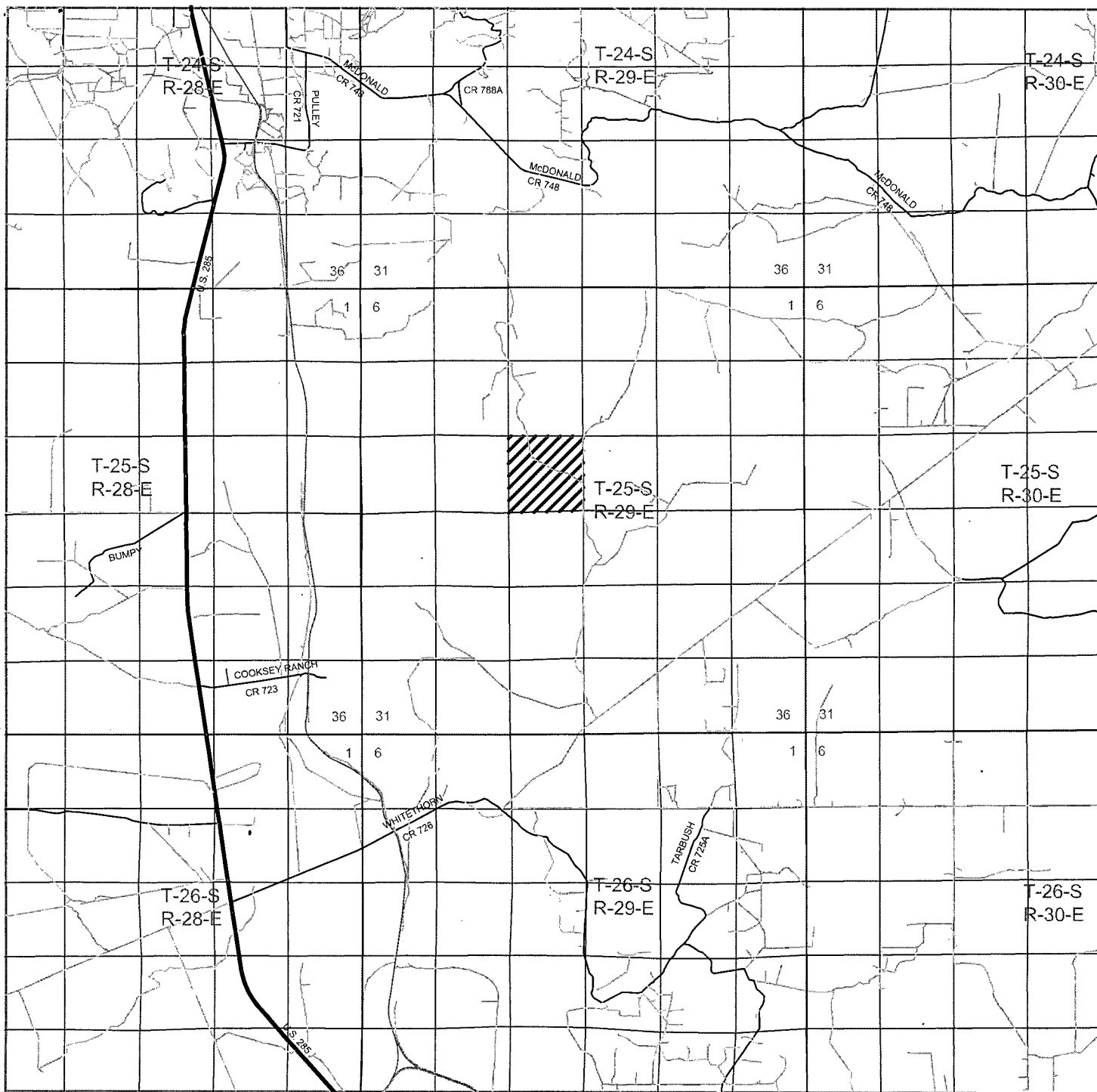
W.O. Number: JMS 22225

Survey Date: 01-20-2010

Scale: 1" = 2000'

Date: 01-22-2010

**DEVON ENERGY
 PRODUCTION
 COMPANY, L.P.**



COOTER "16" STATE #8H
 Located 330' FSL and 420' FEL
 Section 16, Township 25 South, Range 29 East,
 N.M.P.M., Eddy County, New Mexico.



P.O. Box 1786
 1120 N. West County Rd.
 Hobbs, New Mexico 88241
 (575) 393-7316 - Office
 (575) 392-2206 - Fax
 basinsurveys.com

W.O. Number: JMS 22225

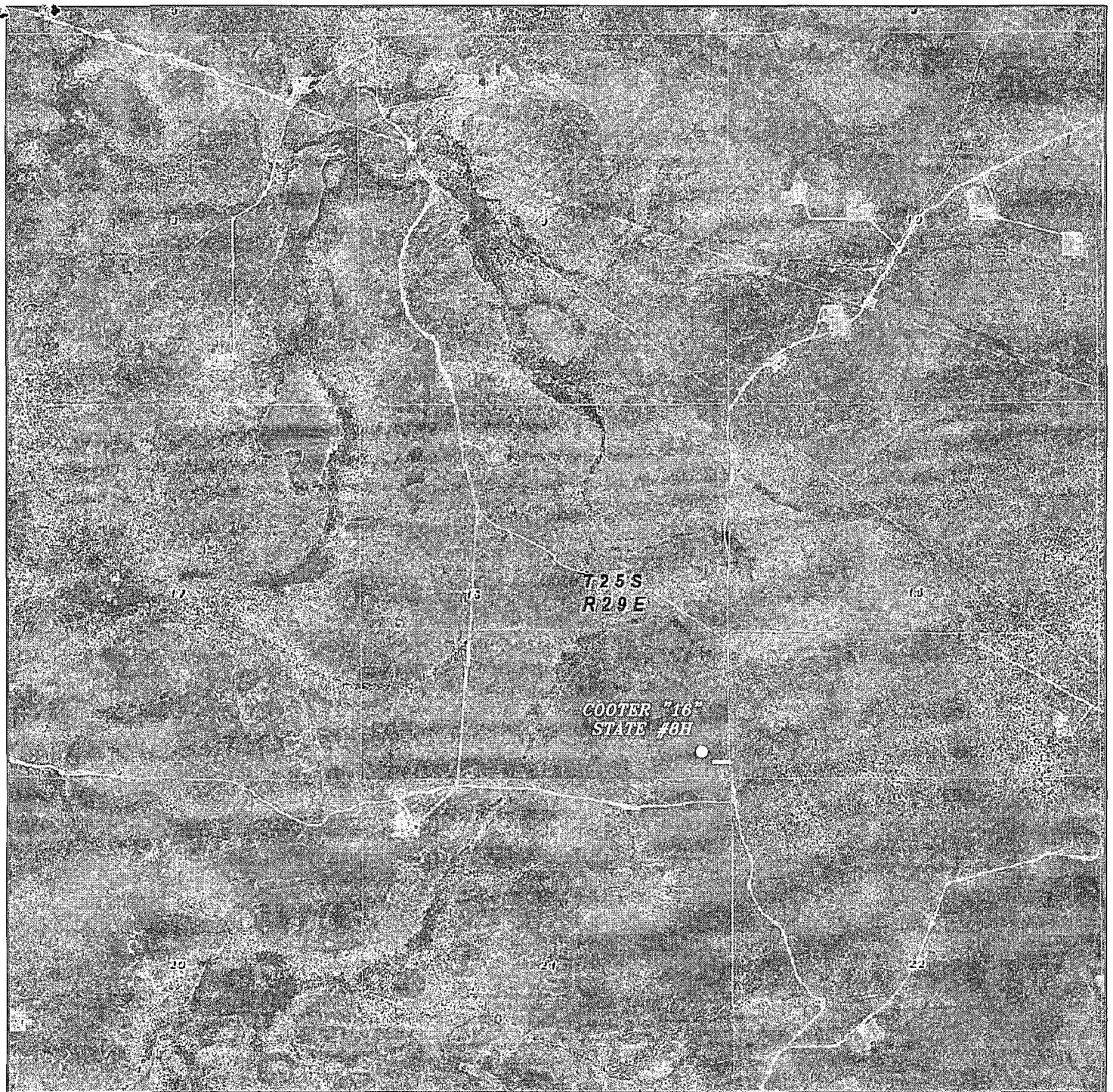
Survey Date: 01-20-2010

Scale: 1" = 2 Miles

Date: 01-22-2010



DEVON ENERGY
 PRODUCTION
 COMPANY, L.P.



COOTER "16" STATE #8H
Located 330' FSL and 420' FEL
Section 16, Township 25 South, Range 29 East,
N.M.P.M., Eddy County, New Mexico.



P.O. Box 1786
1120 N. West County Rd.
Hobbs, New Mexico 88241
(575) 393-7316 - Office
(575) 392-2206 - Fax
basinsurveys.com

W.O. Number: JMS 22225

Scale: 1" = 2000'

YELLOW TINT - USA LAND
BLUE TINT - STATE LAND
NATURAL COLOR - FEE LAND



DEVON ENERGY
PRODUCTION
COMPANY, L.P.