

30-005-60230

NO. OF COPIES RECEIVED	3
DISTRIBUTION	
SANTA FE	1
FILE	1
U.S.G.S.	2
LAND OFFICE	
OPERATOR	1

NEW MEXICO OIL CONSERVATION COMMISSION

RECEIVED

SEP 11 1972

Form C-101
Revised 1-1-65

5A. Indicate Type of Lease
STATE FEE

5. State Oil & Gas Lease No.

O. C. C.

APPLICATION FOR PERMIT TO DRILL, DEEPEN, OR PLUG BACK

1a. Type of Work
 DRILL DEEPEN PLUG BACK

b. Type of Well
 OIL WELL GAS WELL OTHER SINGLE ZONE MULTIPLE ZONE

2. Name of Operator
 Shenandoah Oil Corporation

3. Address of Operator
 702 Gibbs Tower West, Midland, Texas 79701

4. Location of Well
 UNIT LETTER E LOCATED 1080 FEET FROM THE North LINE
 AND 600 FEET FROM THE West LINE OF SEC. 12 TWP. 14 S RGE. 26E NMPM

7. Unit Agreement Name

8. Farm or Lease Name
 Utterback

9. Well No.
 1

10. Field and Pool, or Wildcat
 Wildcat

12. County
 Chaves

19. Proposed Depth
 7000

19A. Formation
 Mississippian

20. Rotary or C.T.
 Rotary

21A. Kind & Status Plug. Bond
 Blanket

21B. Drilling Contractor
 Not awarded yet

22. Approx. Date Work will start
 Nov. 1, 1972

PROPOSED CASING AND CEMENT PROGRAM

SIZE OF HOLE	SIZE OF CASING	WEIGHT PER FOOT	SETTING DEPTH	SACKS OF CEMENT	EST. TOP
17 1/2"	13 3/8"	48#	400	Circ. to surf.	Surface
12 1/4"	8 5/8"	24#	1150	Circ. to surf.	Surface
7 7/8"	4 1/2"	9.5# & 10.5#	7000	Sufficient amount to adequately cover all potential productive zones	

The 13 3/8" and 8 5/8" casing strings will be set and cement circulated to surface by plug displacement method. Hydraulic BOP's will be installed during drilling operations and will be tested daily to 1000 psi.

Mud of sufficient weight will be utilized to protect all formations.

APPROVAL VALID FOR 90 DAYS UNLESS DRILLING COMMENCED, EXPIRES 12-11-72

IN ABOVE SPACE DESCRIBE PROPOSED PROGRAM: IF PROPOSAL IS TO DEEPEN OR PLUG BACK, GIVE DATA ON PRESENT PRODUCTIVE ZONE AND PROPOSED NEW PRODUCTIVE ZONE. GIVE BLOWOUT PREVENTER PROGRAM, IF ANY.

I hereby certify that the information above is true and complete to the best of my knowledge and belief.

Signed Thomas J. Vinso Title District Production Supt. Date September 7, 1972

APPROVED BY W. R. Gressett TITLE OIL AND GAS INSPECTOR DATE SEP 11 1972

CONDITIONS OF APPROVAL, IF ANY:
 Cement must be circulated to 12 3/4" & 8 5/8" casing time to witness cementing 8 7/8" casing

N. MEXICO OIL CONSERVATION COMMISS
WELL LOCATION AND ACREAGE DEDICATION PLAT

Form C-102
 Supersedes C-128
 Effective 1-1-65

All distances must be from the outer boundaries of the Section.

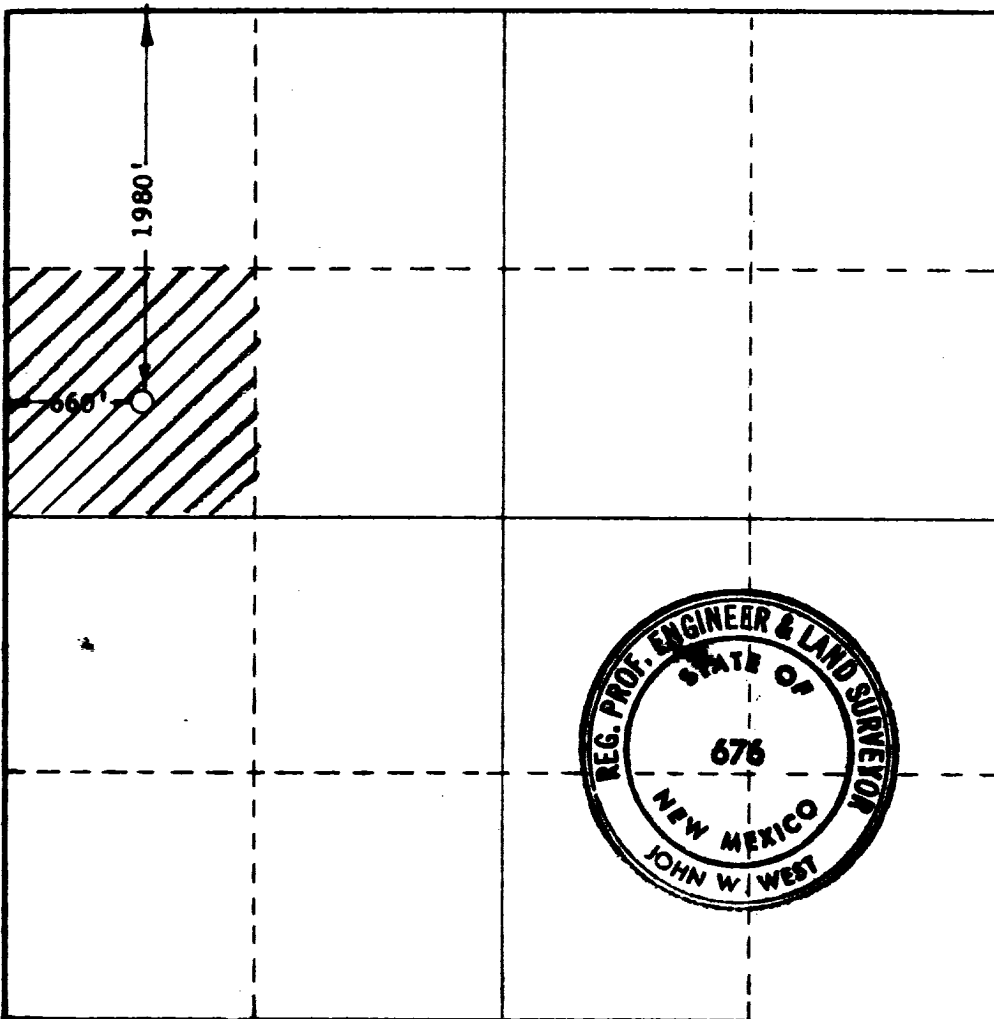
Operator SHENANDOAH OIL CORPORATION		Lease SHENANDOAH <i>Utterback</i>		Well No. 1
Unit Letter E	Section 12	Township 14 SOUTH	Range 26 EAST	County CRAVES
Actual Footage Location of Well: 1980 feet from the NORTH line and 660 feet from the WEST line				
Ground Level Elev. 3393.14	Producing Formation <i>STRADON MISS</i>	Pool <i>Wildcat</i>	Dedicated Acreage: 40 Acres	

- Outline the acreage dedicated to the subject well by colored pencil or hachure marks on the plat below.
- If more than one lease is dedicated to the well, outline each and identify the ownership thereof (both as to working interest and royalty).
- If more than one lease of different ownership is dedicated to the well, have the interests of all owners been consolidated by communitization, unitization, force-pooling, etc?

Yes No If answer is "yes," type of consolidation _____

If answer is "no," list the owners and tract descriptions which have actually been consolidated. (Use reverse side of this form if necessary.) _____

No allowable will be assigned to the well until all interests have been consolidated (by communitization, unitization, forced-pooling, or otherwise) or until a non-standard unit, eliminating such interests, has been approved by the Commission.



CERTIFICATION

I hereby certify that the information contained herein is true and complete to the best of my knowledge and belief.

Thomas E. Fenno

Name
THOMAS E. FENNO

Position
DISTRICT PRODUCTION SUPT.

Company
SHENANDOAH OIL CORPORATION

Date
SEPTEMBER 7, 1972

I hereby certify that the well location shown on this plat was plotted from field notes of actual surveys made by me or under my supervision, and that the same is true and correct to the best of my knowledge and belief.

Date Surveyed
SEPTEMBER 1, 1972

Registered Professional Engineer and/or Land Surveyor

John W. West

Certificate No. **676**

