

**NL MEXICO OIL CONSERVATION COMMISS.
WELL LOCATION AND ACREAGE DEDICATION PLAT**

Form C-102
Supersedes C-128
Effective 1-1-65

All distances must be from the outer boundaries of the Section.

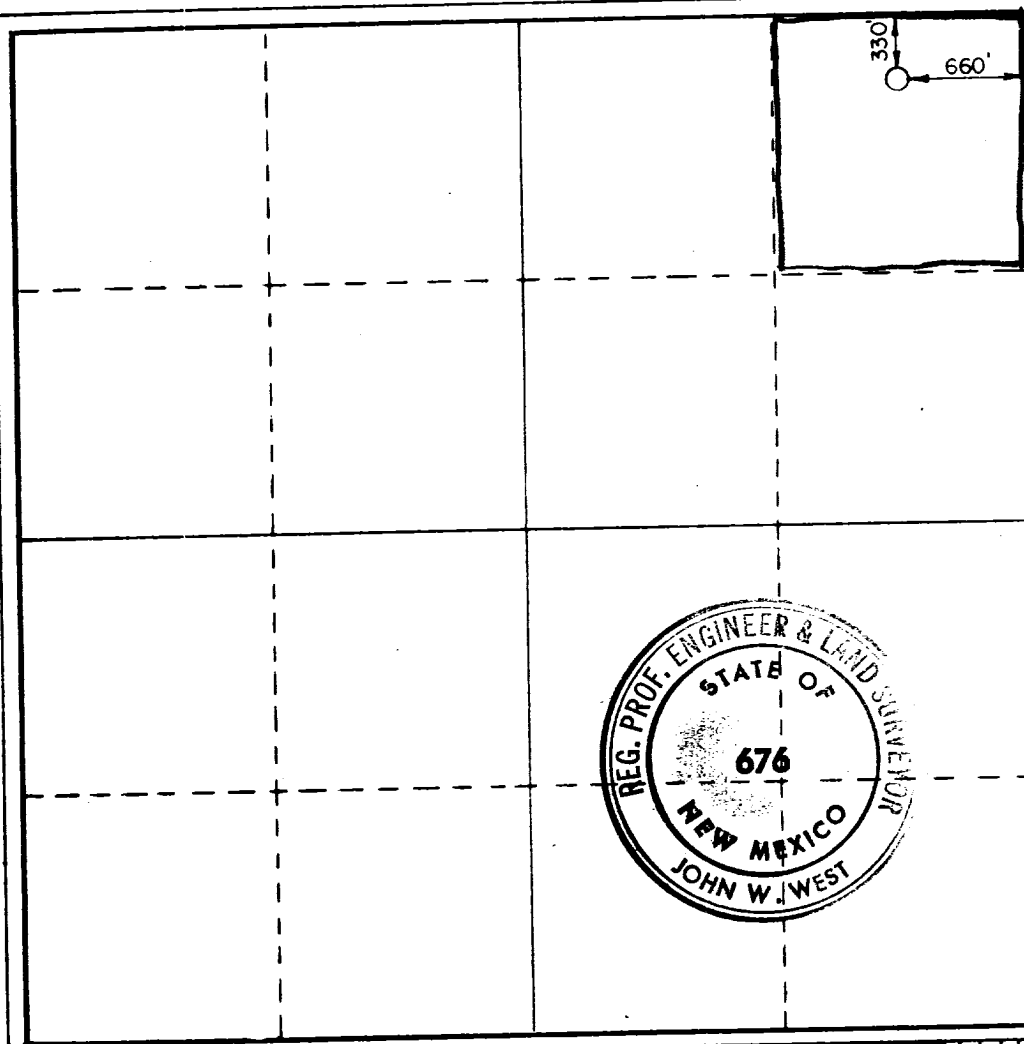
Operator SECAN OIL COMPANY, INC.			Lease RUTLEDGE FEDERAL		Well No. 1
Unit Letter A	Section 25	Township 11 SOUTH	Range 27 EAST	County CHAVES	
Actual Footage Location of Well: 330 feet from the NORTH line and 660 feet from the EAST line					
Ground Level Elev. 3740' GR	Producing Formation DEVONIAN		Pool WILDCAT		Dedicated Acreage: 40 Acres

1. Outline the acreage dedicated to the subject well by colored pencil or hachure marks on the plat below.
2. If more than one lease is dedicated to the well, outline each and identify the ownership thereof (both as to working interest and royalty).
3. If more than one lease of different ownership is dedicated to the well, have the interests of all owners been consolidated by communitization, unitization, force-pooling, etc?

☐ Yes ☐ No If answer is "yes," type of consolidation _____

If answer is "no," list the owners and tract descriptions which have actually been consolidated. (Use reverse side of this form if necessary.) _____

No allowable will be assigned to the well until all interests have been consolidated (by communitization, unitization, forced-pooling, or otherwise) or until a non-standard unit, eliminating such interests, has been approved by the Commission.



CERTIFICATION

I hereby certify that the information contained herein is true and complete to the best of my knowledge and belief.

Name: *Elmer R. Rupp*
 Position: **MANAGER OF PRODUCTION**
 Company: **SECAN OIL COMPANY, INC.**
 Date: **MARCH 26, 1973**

I hereby certify that the well location shown on this plat was plotted from field notes of actual survey by me or under my supervision and that the same is true and correct to the best of my knowledge.

**RECEIVED
MAR 28 1973
U.S. GEOLOGICAL SURVEY
ARTESIA, NEW MEXICO**

Date Surveyed: **MARCH 22, 1973**
 Registered Professional Engineer and/or Land Surveyor

John W. West
 Certificate No. **676**

