

NO. OF COPIES RECEIVED 6

DISTRIBUTION

SANTA FE 1

FILE 1 ✓

U.S.G.S. 1

LAND OFFICE 1

OPERATOR 1

NEW MEXICO OIL CONSERVATION COMMISSION
RECEIVED

APR 1 1973

30-005-60263
Form C-101
Revised 14-65

5A. Indicate Type of Lease
STATE ☒ FEE ☐

5. State Oil & Gas Lease No.
K-3191

7. Unit Agreement Name

8. Farm or Lease Name
EL CINCO

9. Well No.
1

10. Field and Pool, or Wildcat
WILDCAT

12. County
CHAVES

19. Proposed Depth
1900'

19A. Formation
QUEEN SAND

20. Rotary or C.T.
CABLE TOOL

21. Elevations (Show whether DF, RT, etc.)
3742.5 gr.

21A. Kind & Status Plug. Bond
STATE WIDE

21B. Drilling Contractor
CORTEZ DRLG. Co.

22. Approx. Date Work will start
APRIL 14, 1973

APPLICATION FOR PERMIT TO DRILL, DEEPEN, OR PLUG BACK

1a. Type of Work
DRILL ☒ DEEPEN ☐ PLUG BACK ☐

b. Type of Well
OIL WELL ☒ GAS WELL ☐ OTHER ☐

2. Name of Operator
McCLELLAN OIL CORPORATION

3. Address of Operator
P. O. Box 848, ROSWELL, NEW MEXICO 88201

4. Location of Well
UNIT LETTER I LOCATED 1980 FEET FROM THE SOUTH LINE
AND 660 FEET FROM THE EAST LINE OF SEC. 11 TWP. 14-S RGE. 29-E NMPM

11. Elevations (Show whether DF, RT, etc.)
3742.5 gr.

21A. Kind & Status Plug. Bond
STATE WIDE

21B. Drilling Contractor
CORTEZ DRLG. Co.

22. Approx. Date Work will start
APRIL 14, 1973

PROPOSED CASING AND CEMENT PROGRAM

SIZE OF HOLE	SIZE OF CASING	WEIGHT PER FOOT	SETTING DEPTH	SACKS OF CEMENT	EST. TOP
12 1/2"	8-5/8"	20 LB.	350'	100	CIRC.
8"	4 1/2"	10 1/2 LB.	1900'	150	1400'

PREPARE TO TEST THE QUEEN SAND ZONE WITH CABLE TOOL. IF PRODUCTION IS INDICATED, RUN CASING AND ATTEMPT COMPLETION.

APPROVAL VALID
FOR 30 DAYS UNLESS
DRILLING COMMENCED,
EXPIRES 7-13-73

IN ABOVE SPACE DESCRIBE PROPOSED PROGRAM: IF PROPOSAL IS TO DEEPEN OR PLUG BACK, GIVE DATA ON PRESENT PRODUCTIVE ZONE AND PROPOSED NEW PRODUCTIVE ZONE. GIVE BLOWOUT PREVENTER PROGRAM, IF ANY.

I hereby certify that the information above is true and complete to the best of my knowledge and belief.

Signed Joe L. McClullo Title PRESIDENT Date 4/10/73

(This space for State Use)

APPROVED BY W. A. Gussert TITLE OIL AND GAS INSPECTOR DATE APR 13 1973

CONDITIONS OF APPROVAL, IF ANY:

NEW MEXICO OIL CONSERVATION COMMISSION
WELL LOCATION AND ACREAGE DEDICATION PLAT

RECEIVED

Form C-102
Supersedes C-128
Effective 1-1-65

APR 13 1973

All distances must be from the outer boundaries of the Section.

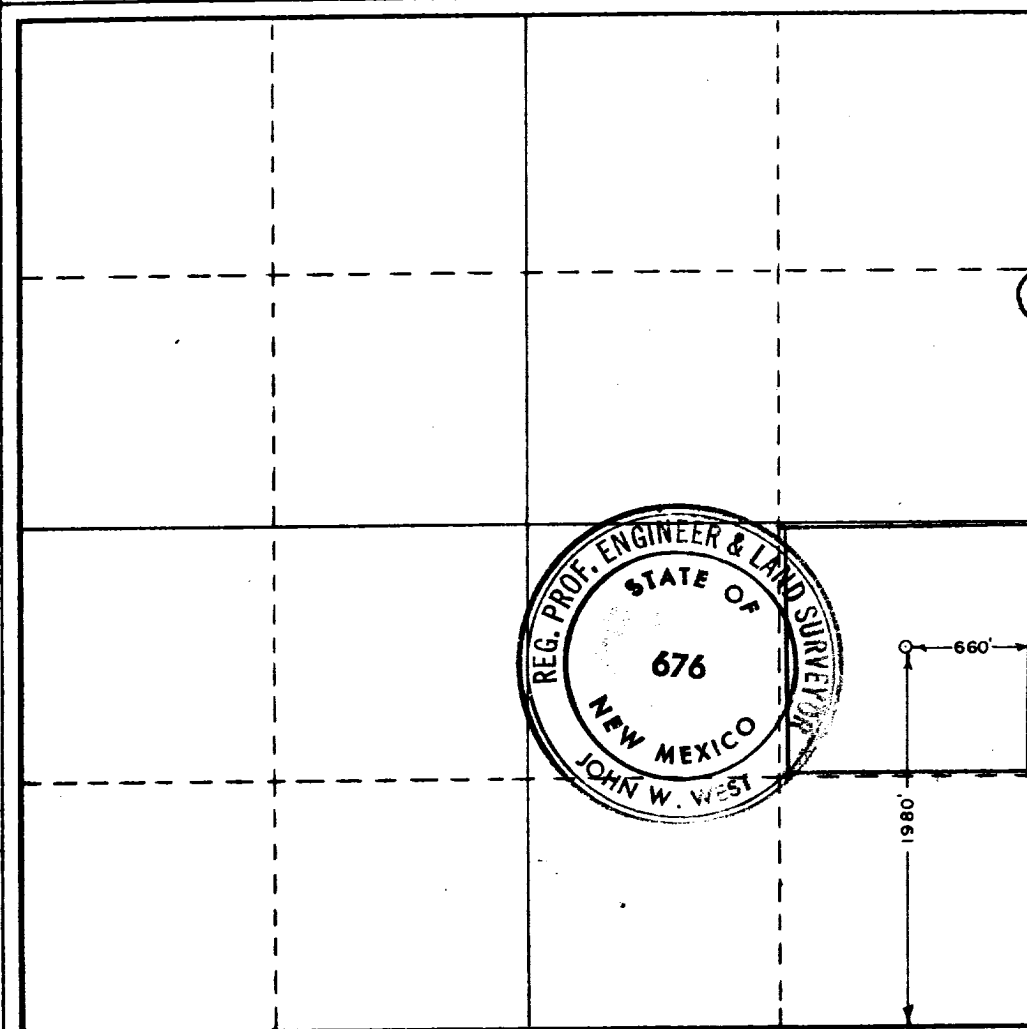
Operator MCCLELLAN OIL CORP.			Lease EL CINCO		Well No. O. C. C. 1
Unit Letter I	Section 11	Township 14 SOUTH	Range 29 EAST	County ARTESIA, OFFICE CHAVES	
Actual Footage Location of Well: 1980 feet from the SOUTH line and 660 feet from the EAST line					
Ground Level Elev. 3742.5 GR	Producing Formation QUEEN SAND		Pool WILDCAT	Dedicated Acreage: 40 Acres	

1. Outline the acreage dedicated to the subject well by colored pencil or hachure marks on the plat below.
2. If more than one lease is dedicated to the well, outline each and identify the ownership thereof (both as to working interest and royalty).
3. If more than one lease of different ownership is dedicated to the well, have the interests of all owners been consolidated by communitization, unitization, force-pooling, etc?

☐ Yes ☐ No If answer is "yes," type of consolidation _____

If answer is "no," list the owners and tract descriptions which have actually been consolidated. (Use reverse side of this form if necessary.) _____

No allowable will be assigned to the well until all interests have been consolidated (by communitization, unitization, forced-pooling, or otherwise) or until a non-standard unit, eliminating such interests, has been approved by the Commission.



CERTIFICATION

I hereby certify that the information contained herein is true and complete to the best of my knowledge and belief.

Name
JACK L. MCCLELLAN

Position
PRESIDENT

Company
MCCLELLAN OIL CORP.

Date
APRIL 12, 1973

I hereby certify that the well location shown on this plat was plotted from field notes of actual surveys made by me or under my supervision, and that the same is true and correct to the best of my knowledge and belief.

Date Surveyed
APRIL 11, 1973

Registered Professional Engineer and/or Land Surveyor

John W West
Certificate No. **676**

0 330 660 990 1320 1650 1980 2310 2640 2970 3300 3630 3960 4290 4620 4950 5280 5610 5940 6270 6600