

UNITED STATES
DEPARTMENT OF THE INTERIOR
GEOLOGICAL SURVEY

APPLICATION FOR PERMIT TO DRILL, DEEPEN, OR PLUG BACK

1a. TYPE OF WORK

DRILL ☒DEEPEN ☐PLUG BACK ☐

b. TYPE OF WELL

OIL
WELL ☒GAS
WELL ☐OTHER ☐SINGLE
ZONE ☒MULTIPLE
ZONE ☐

2. NAME OF OPERATOR

McCLELLAN OIL CORPORATION

3. ADDRESS OF OPERATOR

Box 848, Roswell, New Mexico 88201

4. LOCATION OF WELL (Report location clearly and in accordance with any State requirements.)

At surface

At proposed prod. zone

660' FNL & 660' FWL

14. DISTANCE IN MILES AND DIRECTION FROM NEAREST TOWN OR POST OFFICE*

17 MILES EAST OF HAGERMAN

15. DISTANCE FROM PROPOSED*

LOCATION TO NEAREST
PROPERTY OR LEASE LINE, FT.
(Also to nearest drlg. unit line, if any)

660'

18. DISTANCE FROM PROPOSED LOCATION*
TO NEAREST WELL, DRILLING, COMPLETED,
OR APPLIED FOR, ON THIS LEASE, FT.

1 MILE

16. NO. OF ACRES ASSIGNED

640

19. PROPOSED DEPTH

1300'

17. NO. OF ACRES ASSIGNED
TO THIS WELL

40

20. ROTARY OR CABLE TOOLS

CABLE TOOLS

21. ELEVATIONS (Show whether DF, RT, GR, etc.)

3607' G. L.

22. APPROX. DATE WORK WILL START*

23.

PROPOSED CASING AND CEMENTING PROGRAM

SIZE OF HOLE	SIZE OF CASING	WEIGHT PER FOOT	SETTING DEPTH	QUANTITY OF CEMENT
10 1/2"	8-5/8"	20 LB.	200'	* SET
8"	4 1/2"	9 1/2 LB.	1300'	100 SX.

WILL DRILL TO APPROX. 1300' TO TEST THE QUEEN SAND. IF PRODUCTION
IS INDICATED, WILL SET CASING & ATTEMPT COMPLETION. CORTEZ DRILLING
COMPANY WILL BE THE CONTRACTOR.

* IF PRODUCTION IS ACCOMPLISHED, WILL CIRCULATE CEMENT
TUBING. IF DRY, WILL PULL & SPOT CEMENT PLUGS OVER WAY
INTERVALS.

IN ABOVE SPACE DESCRIBE PROPOSED PROGRAM: If proposal is to deepen or plug back, give data on present productive zone and proposed new productive zone. If proposal is to drill or deepen directionally, give pertinent data on subsurface locations and measured and true vertical depths. Give blowout prevention program, if any.

24.

SIGNED

James L. McClellan

TITLE

PRESIDENT

DATE

6/14/73

(This space for Federal or State office use)

PERMIT NO.

APPROVAL DATE

DATE

APPROVED
JUN 25 1973

CONDITIONS OF APPROVAL, IF ANY:

R. L. BECKMAN
ACTING DISTRICT ENGINEERTHIS APPROVAL IS EXTENDED IF OPERATIONS
ARE NOT COMMENCED WITHIN 3 MONTHS.
SEP 25 1973
*See Instructions On Reverse Side

NEW MEXICO OIL CONSERVATION COMMISSION
WELL LOCATION AND ACREAGE DEDICATION PLAT

Form C-102
Supersedes C-128
Effective 1-1-65

All distances must be from the outer boundaries of the Section.

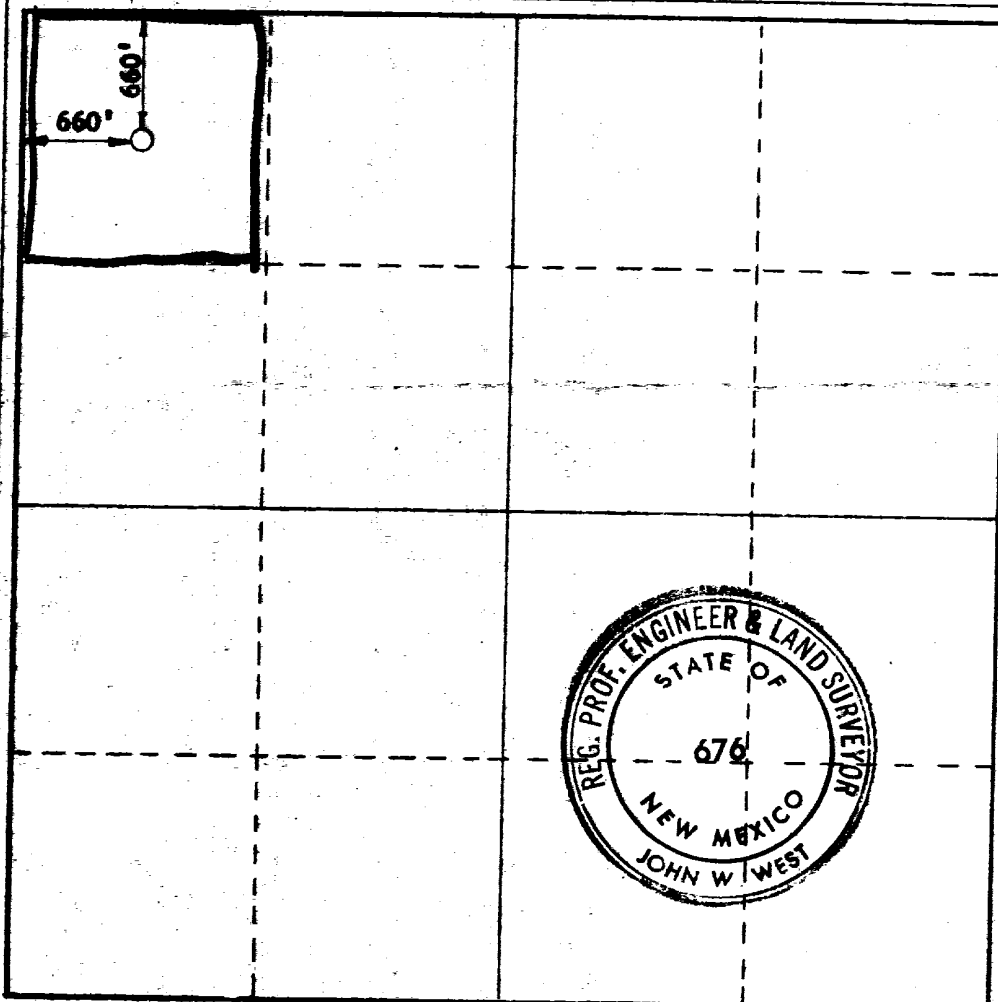
Operator McCLELLAN OIL CORPORATION			Lease BUTTER SPRINGS		Well No. 1
Unit Letter 1B	Section 23	Township 14 SOUTH	Range 28 EAST	County CHAVES	
Actual Footage Location of Well: 660 feet from the NORTH line and 660 feet from the WEST line					
Ground Level Elev. 3595'	Producing Formation QUEEN SAND		Pool WILDCAT		Dedicated Acreage: 40 Acres

1. Outline the acreage dedicated to the subject well by colored pencil or hachure marks on the plat below.
2. If more than one lease is dedicated to the well, outline each and identify the ownership thereof (both as to working interest and royalty).
3. If more than one lease of different ownership is dedicated to the well, have the interests of all owners been consolidated by communitization, unitization, force-pooling, etc?

☐ Yes ☐ No If answer is "yes," type of consolidation _____

If answer is "no," list the owners and tract descriptions which have actually been consolidated. (Use reverse side of this form if necessary.) _____

No allowable will be assigned to the well until all interests have been consolidated (by communitization, unitization, forced-pooling, or otherwise) or until a non-standard unit, eliminating such interests, has been approved by the Commission.



CERTIFICATION

I hereby certify that the information contained herein is true and complete to the best of my knowledge and belief.

John L. McClellan

Name
JOHN L. McCLELLAN
Position
PRESIDENT

Company
McCLELLAN OIL CORP.

Date
6/15/73

RECEIVED
JUN 18 1973
I hereby certify that the well location shown on this plat was plotted from field notes of actual survey made by me or under my supervision, and that the same is true and correct to the best of my knowledge and belief.

Date Surveyed
JUNE 14, 1973

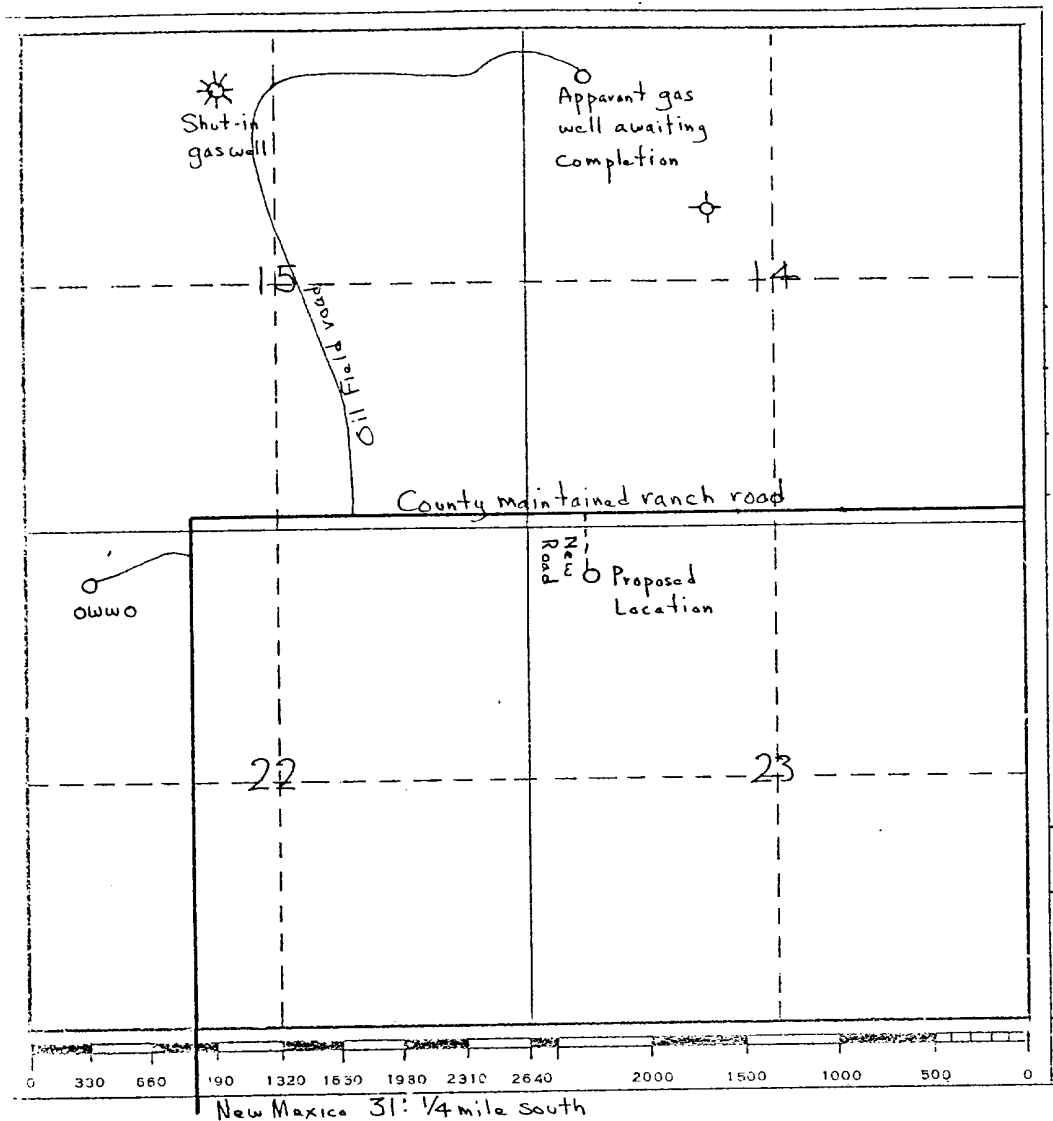
Registered Professional Engineer and/or Land Surveyor
John W. West

Certificate No.
676



JME

MCCLELLAN OIL CORPORATION
Box 848
ROSWELL, NEW MEXICO 88201



PROPOSE TO USE EXISTING ROADS, OIL FIELD AND RANCH, AND TO CONSTRUCT APPROXIMATELY 660' OF NEW ROAD TO LOCATION. NO WATER EXISTS IN THIS AREA AND WILL HAVE TO BE TRUCKED IN TO LOCATION. COMBUSTIBLE MATERIAL WILL BE BURNED, NON-COMBUSTIBLE MATERIAL WILL BE BURIED WITH PIT FILLING.

AFTER COMPLETION OR ABANDONMENT, THE PIT WILL BE FILLED, THE LOCATION CLEANED, AND THE AREA RESTORED, AS MUCH AS POSSIBLE, TO ITS ORIGINAL STATE.

