

NO. OF COPIES RECEIVED 10

DISTRIBUTION

SANTA FE ☒

FILE ☒

U.S.G.S. ☒

LAND OFFICE ☒

OPERATOR ☒

RECEIVED
NEW MEXICO OIL CONSERVATION COMMISSION

DEC 26 1973

D.C.C.
MESA, OFFICE

30-005-60289

Form O-12
Revised 1-73

5A. Indicate Type of Lease
STATE ☒ FEDERAL ☐

5. State Oil & Gas Lease No.
L-4608

APPLICATION FOR PERMIT TO DRILL, DEEPEN, OR PLUG BACK

1a. Type of Work
DRILL ☒ DEEPEN ☐ PLUG BACK ☐

b. Type of Well
OIL WELL ☐ GAS WELL ☒ OTHER ☐

2. Name of Operator
R. L. Force

3. Address of Operator
3700 First National Bank Bldg., Dallas, Texas 75202

4. Location of Well
UNIT LETTER 0 LOCATION 1980 FEET FROM THE East LINE
ARC 660 FEET FROM THE South LINE OF SEC. 11 TWP. 14S R6E 28E NMPM

5. Proposed Depth 1900' 5A. Formation Premier C.T.
21. Elevations (Show whether DF, RT, etc.)
Ground 3600 est. 21A. Kind & Status Plug. Bond one well 21B. Drilling Contractor Cortez Drilling Co. Approx. Date Work will start Feb. 1, 1974

PROPOSED CASING AND CEMENT PROGRAM

SIZE OF HOLE	SIZE OF CASING	WEIGHT PER FOOT	SETTING DEPTH	SACKS OF CEMENT	EST. TOP circulate
12"	8-5/8"	10#	300'	200	1450'
6"	4-1/2"	9.5#	1550'	100	

Hole will be drilled cable tool to top of Premier Sand. 4" casing will be set on top of Premier Sand. Will drill 4" Premier with reverse circulating unit.

APPROVAL VALID
FOR 90 DAYS UNLESS
DRILLING COMMENCED,

EXPIRES 4-8-74

IN ABOVE SPACE DESCRIBE PROPOSED PROGRAM; IF PROPOSAL IS TO DEEPEN OR PLUG BACK, GIVE DATA ON PRESENT WELL, OILY ZONE AND PROPOSED NEW PRODUCTION ZONE. GIVE FLOWOUT PREVENTION PROGRAM, IF ANY.

I hereby certify that the information above is true and complete to the best of my knowledge and belief.

Signed R. L. Force Title Agent Date 12-24-73

(This space for State Use)

APPROVED BY W. A. Gressett TITLE OIL AND GAS INSPECTOR
CONDITIONS OF APPROVAL, IF ANY:

JAN 8 1974

NEW MEXICO OIL CONSERVATION COMMISSION
WELL LOCATION AND ACREAGE DEDICATION PLAT

Form C-102
Supersedes C-128
Effective 1-1-65

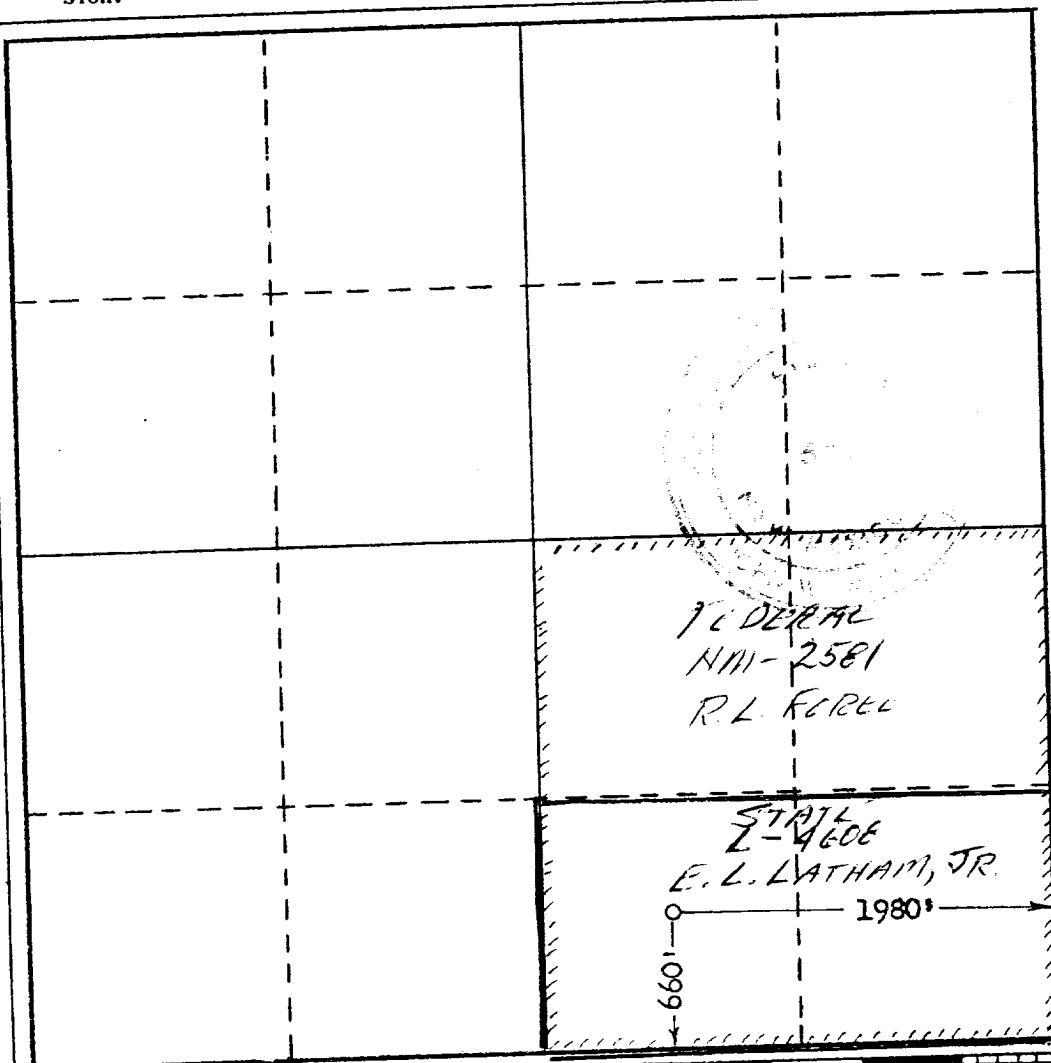
All distances must be from the outer boundaries of the Section.

Operator R. L. FOREE		Lease State-Com		Well No. 1
Unit Letter 0	Section 11	Township 14 South	Range 28 East	County Chaves
Actual Footage Location of Well: 1980 feet from the east line and 660 feet from the south line				
Ground Level Elev. 1980	Producing Formation Premier	Pool Sams Ranch	Dedicated Acreage: 160 Acres	

1. Outline the acreage dedicated to the subject well by colored pencil or hachure marks on the plat below.
2. If more than one lease is dedicated to the well, outline each and identify the ownership thereof (both as to working interest and royalty).
3. If more than one lease of different ownership is dedicated to the well, have the interests of all owners been consolidated by communitization, unitization, force-pooling, etc?

☐ Yes ☒ No If answer is "yes," type of consolidation _____

If answer is "no," list the owners and tract descriptions which have actually been consolidated. (Use reverse side of this form if necessary.) TO BE COMMUNITIZED IF PRODUCTIVE
No allowable will be assigned to the well until all interests have been consolidated (by communitization, unitization, forced-pooling, or otherwise) or until a non-standard unit, eliminating such interests, has been approved by the Commission.



CERTIFICATION

I hereby certify that the information contained herein is true and complete to the best of my knowledge and belief.

Name John W. West
Position Agent
Company R. L. FOREE
Date Dec. 26, 1973

I hereby certify that the well location shown on this plat was plotted from field notes of actual surveys made by me or under my supervision, and that the same is true and correct to the best of my knowledge and belief.

Date Surveyed Dec. 26, 1973
Registered Professional Engineer and/or Land Surveyor

John W. West
Certificate No. **676**

0 330 660 990 1320 1650 1980 2310 2640 2970 3300 3630 3960 4290 4620 4950 5280 5610 5940 6270 6600