

NEW MEXICO OIL CONSERVATION COMMISSION
WELL LOCATION AND ACREAGE DEDICATION PLAT

Form C-102
Supersedes C-128
Effective 1-1-65

All distances must be from the outer boundaries of the Section

Operator MOUNTAIN STATES PETROLEUM CORP.		Lease STATE COM		Well No. 1
Section M	Section 36	Township 14 SOUTH	Range 27 EAST	County CHAVES
Actual Surface Location of Well: 990 feet from the SOUTH line and 990 feet from the WEST line				
Ground Level Elev. 3524.1	Producing Formation Atoka	Pool Buffalo Valley Penn	Dedicated Acreage 320	

- Outline the acreage dedicated to the subject well by colored pencil or hatchure marks on the plat below.
- If more than one lease is dedicated to the well, outline each and identify the ownership thereof (both as to working interest and royalty)
- If more than one lease of different ownership is dedicated to the well, have the interests of all owners been consolidated by communitization, unitization, force-pooling, etc?

RECEIVED

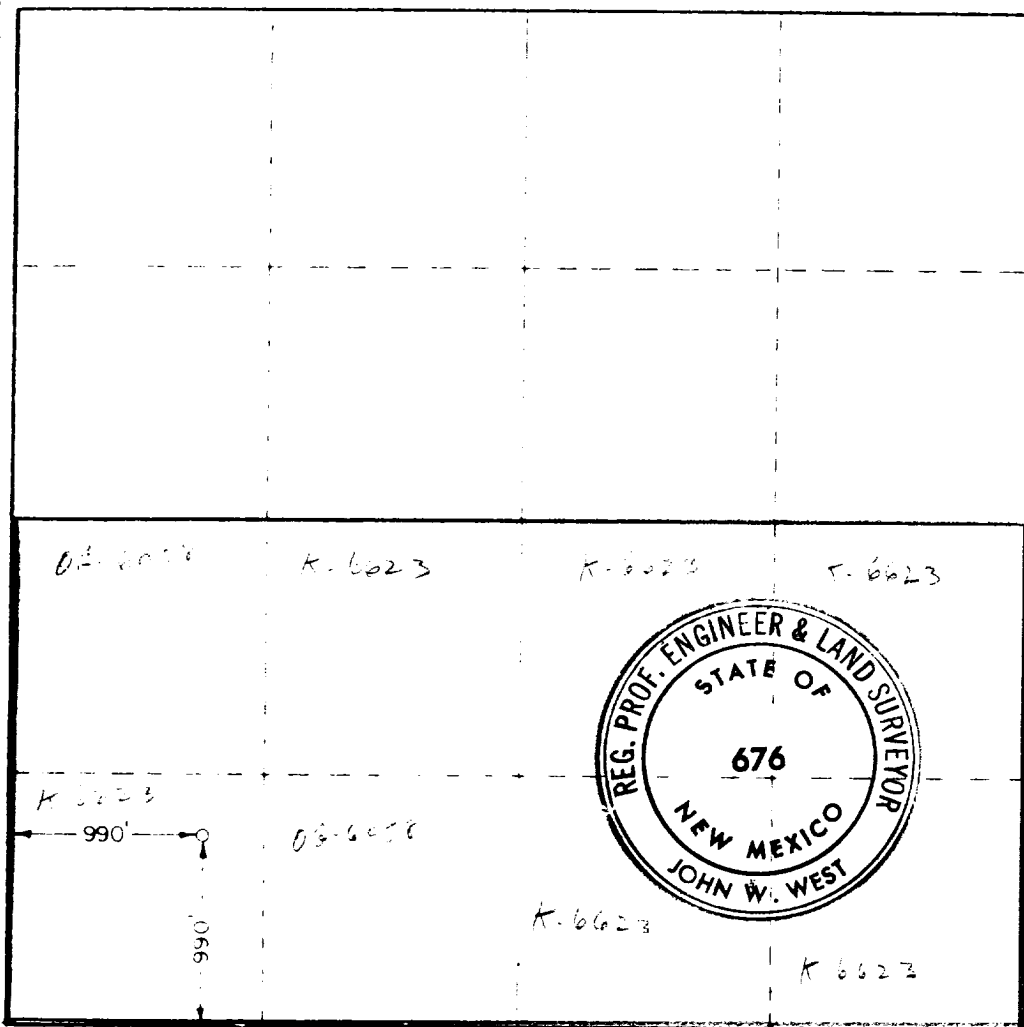
MAR 21 1974

O. C. C.
ARTESIA, OFFICE

☐ Yes ☐ No If answer is "yes" type of consolidation will be communitized if productive.

If answer is "no" list the owners and tract descriptions which have actually been consolidated (Use reverse side of this form if necessary.)

No allowable will be assigned to the well until all interests have been consolidated (by communitization, unitization, forced-pooling, or otherwise) or until a non-standard unit, eliminating such interests, has been approved by the Commission.



CERTIFICATION

I hereby certify that the information contained herein is true and complete to the best of my knowledge and belief.

K. C. Havenor

K. C. Havenor

Geologist

Mountain States Petro. Corp.

March 19, 1974

I hereby certify that the well location shown on this plat was plotted from field notes of actual surveys made by me or under my supervision and that the same is true and correct to the best of my knowledge and belief.

Date Surveyed

MARCH 16, 1974

Registered Professional Engineer

and Land Surveyor

John W. West

Certificate No.

676

0 330 660 990 1320 1650 1980 2310 2640 2970 3300 3630 3960 4290 4620 4950 5280 5610 5940 6270 6600 6930 7260 7590 7920 8250 8580 8910 9240 9570 9900