



## OIL CONSERVATION COMMISSION

STATE OF NEW MEXICO  
P. O. DRAWER DD - ARTESIA  
88210

June 16, 1975

I. R. TRUJILLO  
CHAIRMAN

LAND COMMISSIONER  
PHIL R. LUCERO  
MEMBER

STATE GEOLOGIST  
A. L. PORTER, JR.  
SECRETARY - DIRECTOR

The Anchutz Corporation  
1270 Entex Building  
Houston, Texas 77002

Re: State  
#1-O, 32-6-27  
Chaves County, N. M.

Gentlemen:

We hereby acknowledge receipt of a Notice of Intent to Plug and Abandon the subject well.

To complete our records on this well, please submit the following:

1. Form C-103 reporting the spud date, setting and cementing the conductor and surface casing, including the amount and type of cement used, W.O.C. time, pressure test and results of same.
2. Form C-103, Subsequent Report of P & A.
3. Form C-105, Well Completion Report and Log with all applicable information thereon including the Formation Record and Tops, said report to be accompanied by a summary of all special tests conducted including drill stem and deviation tests.

Sincerely yours,

OIL CONSERVATION COMMISSION

W. A. Gressett  
Supervisor, District II

NO. OF COPIES RECEIVED	
DISTRIBUTION	
SANTA FE	
FILE	
U.S.G.S.	
LAND OFFICE	
OPERATOR	

NEW MEXICO OIL CONSERVATION COMMISSION  
**RECEIVED**

MAR 21 1975

O. C. C.

30-005-60338

Form C-101  
Revised 1-1-65

5A. Indicate Type of Lease STATE <input checked="" type="checkbox"/> FEE <input type="checkbox"/>	
5. State Oil & Gas Lease No. L-4239	
7. Unit Agreement Name None	
8. Farm or Lease Name State	
9. Well No. 1	
10. Field and Pool, or Wildcat Wildcat	
12. County Chaves	
19. Proposed Depth 6800	19A. Formation Granite Wash
20. Rotary or C.T. Rotary	
21. Elevations (Show whether DF, RT, etc.) 4039 G.L.	21A. Kind & Status Plug. Bond See Attached one well
21B. Drilling Contractor MGF	22. Approx. Date Work will start 4/3/75

APPLICATION FOR PERMIT TO DRILL, DEEPEN, OR PLUG BACK

1a. Type of Work DRILL <input checked="" type="checkbox"/> DEEPEN <input type="checkbox"/> PLUG BACK <input type="checkbox"/>	
b. Type of Well OIL WELL <input checked="" type="checkbox"/> GAS WELL <input type="checkbox"/> OTHER <input type="checkbox"/> SINGLE ZONE <input type="checkbox"/> MULTIPLE ZONE <input type="checkbox"/>	
2. Name of Operator The Anschutz Corporation	
3. Address of Operator 1270 Entex Building, Houston, Texas 77002	
4. Location of Well UNIT LETTER 0 LOCATED 330 FEET FROM THE South LINE AND 1650 FEET FROM THE East LINE OF SEC. 32 TWP. 6S RGE. 27E NMPM	
23. PROPOSED CASING AND CEMENT PROGRAM	

SIZE OF HOLE	SIZE OF CASING	WEIGHT PER FOOT	SETTING DEPTH	SACKS OF CEMENT	EST. TOP
17"	13-3/8"	48.0	50'	50	30'
12-1/4"	8-5/8"	24.0	1400'	670	0'
7-7/8"	5-1/2"	15.5	6800'	300	5300'

Blowout prevention equipment will be as follows:

Series 900 10" braden head, welded on new 8-5/8" 24# K-55 csg. on which will be bolted a Schaffer double ram series 900 blowout preventer. Pipe rams for the pipe in use will be carried in the lower rams and blank rams will be carried in the top rams. All accessory valves (kill line, fillup line, braden head valves and choke line) will all be 3000 psi or greater WP valves and fittings suitable for oil field service. Said equipment will be tested with water to the Mill Test pressure for the casing in use or to the design service pressure of the equipment whichever is the lesser.

APPROVAL VALID  
FOR 90 DAYS UNLESS  
DRILLING COMMENCED,

6-31-75

IN ABOVE SPACE DESCRIBE PROPOSED PROGRAM: IF PROPOSAL IS TO DEEPEN OR PLUG BACK, GIVE DATA ON PRESENT PRODUCTIVE ZONE AND PROPOSED NEW PRODUCTIVE ZONE. GIVE BLOWOUT PREVENTER PROGRAM, IF ANY.

I hereby certify that the information above is true and complete to the best of my knowledge and belief.

Signed [Signature] Title Mgr., Drilling & Operations Date March 18, 1975

(This space for State Use)

APPROVED BY [Signature] TITLE SUPERVISOR, DISTRICT II DATE MAR 31 1975

CONDITIONS OF APPROVAL, IF ANY:

Cement must be circulated to  
surface behind 13 7/8" 8 5/8" casing

NEW MEXICO OIL CONSERVATION COMMISSION  
WELL LOCATION AND ACREAGE DEDICATION PLAT

Form C-102  
Supersedes C-128  
Effective 1-1-65

All distances must be from the outer boundaries of the Section

Operator <b>THE ANSCHUTZ CORPORATION</b>			Lease <b>STATE</b>		Well No. <b>1</b>
Section <b>0</b>	Section <b>32</b>	Township <b>6 SOUTH</b>	Range <b>27 EAST</b>	County <b>CHAVES</b>	
Approximate Location of Well: <b>1650</b> feet from the <b>EAST</b> line and <b>330</b> feet from the <b>SOUTH</b> line					
Ground Level Elev. <b>4039.4</b>	Producing Formation <i>Granite wash</i>		Pool <i>wildcat</i>	Dedicated Acreage: <b>40</b> Acres	

1. Outline the acreage dedicated to the subject well by colored pencil or hatchure marks on the plat below.
2. If more than one lease is dedicated to the well, outline each and identify the ownership thereof (both as to working interest and royalty).
3. If more than one lease of different ownership is dedicated to the well, have the interests of all owners been consolidated by communitization, unitization, force-pooling, etc?

**RECEIVED**

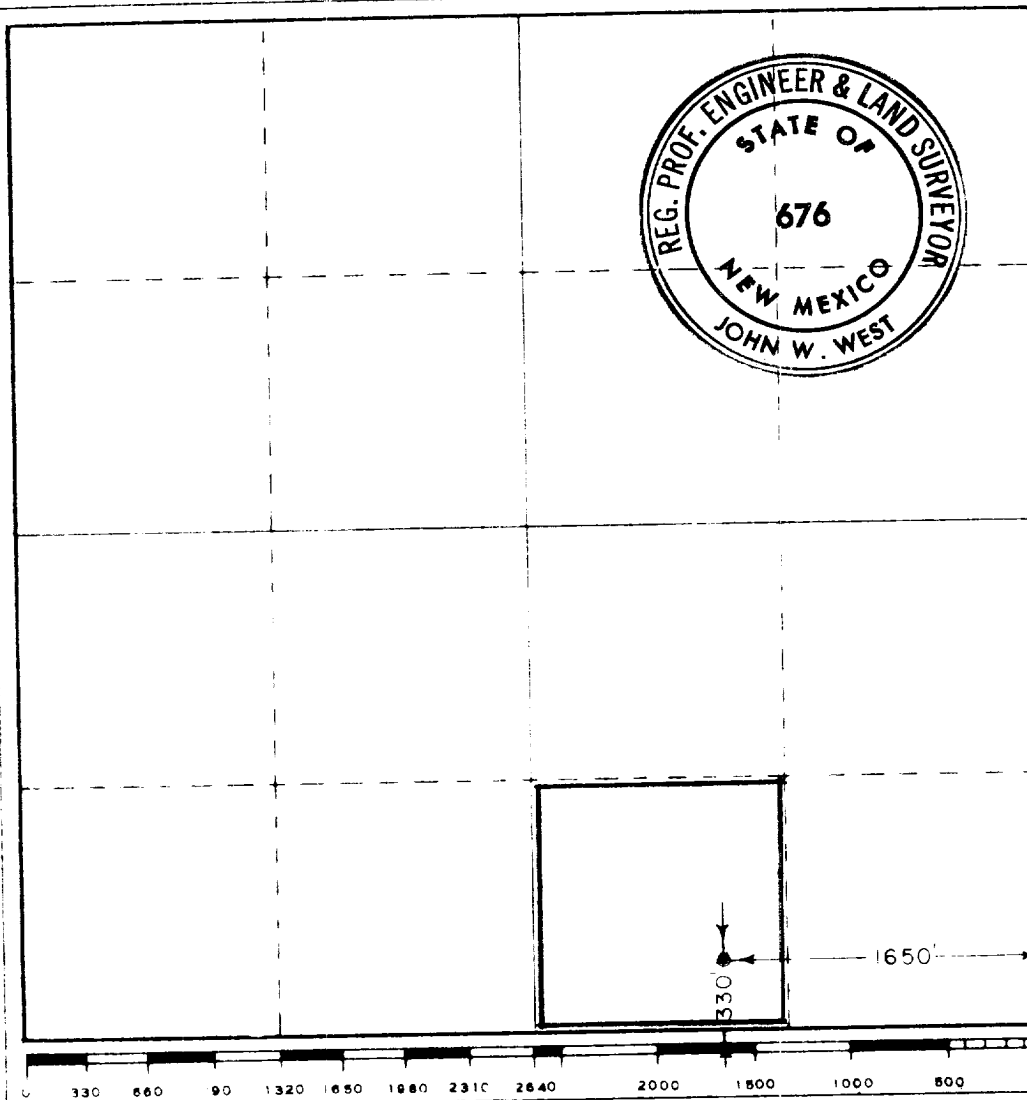
**MAR 21 1975**

**O. C. C.**  
**ARTESIA, OFFICE**

☐ Yes ☐ No If answer is "yes," type of consolidation \_\_\_\_\_

If answer is "no," list the owners and tract descriptions which have actually been consolidated. (Use reverse side of this form if necessary.) \_\_\_\_\_

No allowable will be assigned to the well until all interests have been consolidated (by communitization, unitization, forced-pooling, or otherwise) or until a non-standard unit, eliminating such interests, has been approved by the Commission.



**CERTIFICATION**

I hereby certify that the information contained herein is true and complete to the best of my knowledge and belief.

*W. J. Johnston*  
W. J. Johnston

Mgr., Drlg. & Operations

The Anschutz Corporation

March 18, 1975

I hereby certify that the well location shown on this plat was plotted from field notes of actual surveys made by me or under my supervision, and that the same is true and correct to the best of my knowledge and belief.

Date Surveyed

**JANUARY 21, 1975**

Registered Professional Engineer  
and a Land Surveyor

*John W. West*  
John W. West  
676