

NO. OF COPIES RECEIVED	2
DISTRIBUTION	
SANTA FE	
FILE	
U.S.G.S.	
LAND OFFICE	
OPERATOR	

NEW MEXICO OIL CONSERVATION COMMISSION

MAY 2 1975

O. C. C.
ARTESIA, OFFICE

30-005-60345

Form C-101
Revised 1-1-65

5A. Indicate Type of Lease	
STATE <input checked="" type="checkbox"/>	FEE <input type="checkbox"/>
5. State Oil & Gas Lease No.	
L 647	
7. Unit Agreement Name	
North King Camp Unit	
8. Farm or Lease Name	
9. Well No.	
12	
10. Field and Pool, or Wildcat	
Undesignated	
12. County	
Chaves	
19. Proposed Depth	19A. Formation
9500'	Lower Penn.
20. Rotary or C.T.	
Rotary	
21. Elevations (Show whether DE, RT, etc.)	21A. Kind & Status Plug. Bond
3755.2 GR	Statewide
21B. Drilling Contractor	
Moran Drilling	
22. Approx. Date Work will start	
June 1, 1975	

APPLICATION FOR PERMIT TO DRILL, DEEPEN, OR PLUG BACK

1a. Type of Work	
b. Type of Well	
DRILL <input checked="" type="checkbox"/>	DEEPEN <input type="checkbox"/>
OIL WELL <input type="checkbox"/>	GAS WELL <input checked="" type="checkbox"/>
OTHER <input type="checkbox"/>	
2. Name of Operator	
Franklin, Aston & Fair, Inc.	
3. Address of Operator	
P.O. Box 1090 Roswell, New Mexico 88201	
4. Location of Well	
UNIT LETTER E	LOCATED 1980
FEET FROM THE North LINE	
AND 660	FEET FROM THE West
LINE OF SEC. 36	
TWP. 13S	RGE. 29E
NMPM	
19. Proposed Depth	
9500'	
19A. Formation	
Lower Penn.	
20. Rotary or C.T.	
Rotary	
21. Elevations (Show whether DE, RT, etc.)	
3755.2 GR	
21A. Kind & Status Plug. Bond	
Statewide	
21B. Drilling Contractor	
Moran Drilling	
22. Approx. Date Work will start	
June 1, 1975	

PROPOSED CASING AND CEMENT PROGRAM

SIZE OF HOLE	SIZE OF CASING	WEIGHT PER FOOT	SETTING DEPTH	SACKS OF CEMENT	EST. TOP
15"	12-3/4"	48#	275'	300	circ. surf.
12 1/4"	8-5/8"	24#	2350'	2400	circ. surf.
7-7/8"	5-1/2"	17#	9500'	300	

This well will commence about June 1, 1975. The 12-3/4" surface casing will be set at about 275' with 300 sacks cement circulated to surface. The 8-5/8" intermediate casing will be set at about 2350' with 1400 sacks cement circulated to surface. A 7-7/8" hole will be drilled to approximately 9500' to test the Lower Pennsylvanian sands. If production is indicated, 5 1/2" casing will be run for completion attempt.

APPROVAL VALID
FOR 90 DAYS UNLESS
DRILLING COMMENCED,
EXPIRES 8-2-75

IN ABOVE SPACE DESCRIBE PROPOSED PROGRAM: IF PROPOSAL IS TO DEEPEN OR PLUG BACK, GIVE DATA ON PRESENT PRODUCTIVE ZONE AND PROPOSED NEW PRODUCTIVE ZONE. GIVE BLOWOUT PREVENTER PROGRAM, IF ANY.

I hereby certify that the information above is true and complete to the best of my knowledge and belief.

Signed Grant M. Smith Title Geologist Date April 30, 1975

(This space for State Use)

APPROVED BY W. A. Gussert TITLE SUPERVISOR, DISTRICT II DATE MAY 2 1975

CONDITIONS OF APPROVAL, IF ANY:

See attachment

MEXICO OIL CONSERVATION COMMISSION
WELL LOCATION AND ACREAGE DEDICATION PLAT

Form C-102
Supersedes C-128
Effective 1-1-65

All distances must be from the outer boundaries of the Section

Franklin, Aston & Fair, Incorporated

North King Camp Unit

12

E

36

13 South

29 East

Chaves

660

West

1980

North

3755.2

Lower Pennsylvanian

320

Indicate the acreage dedicated to the subject well by colored pencil or ballpoint pen on the map below.

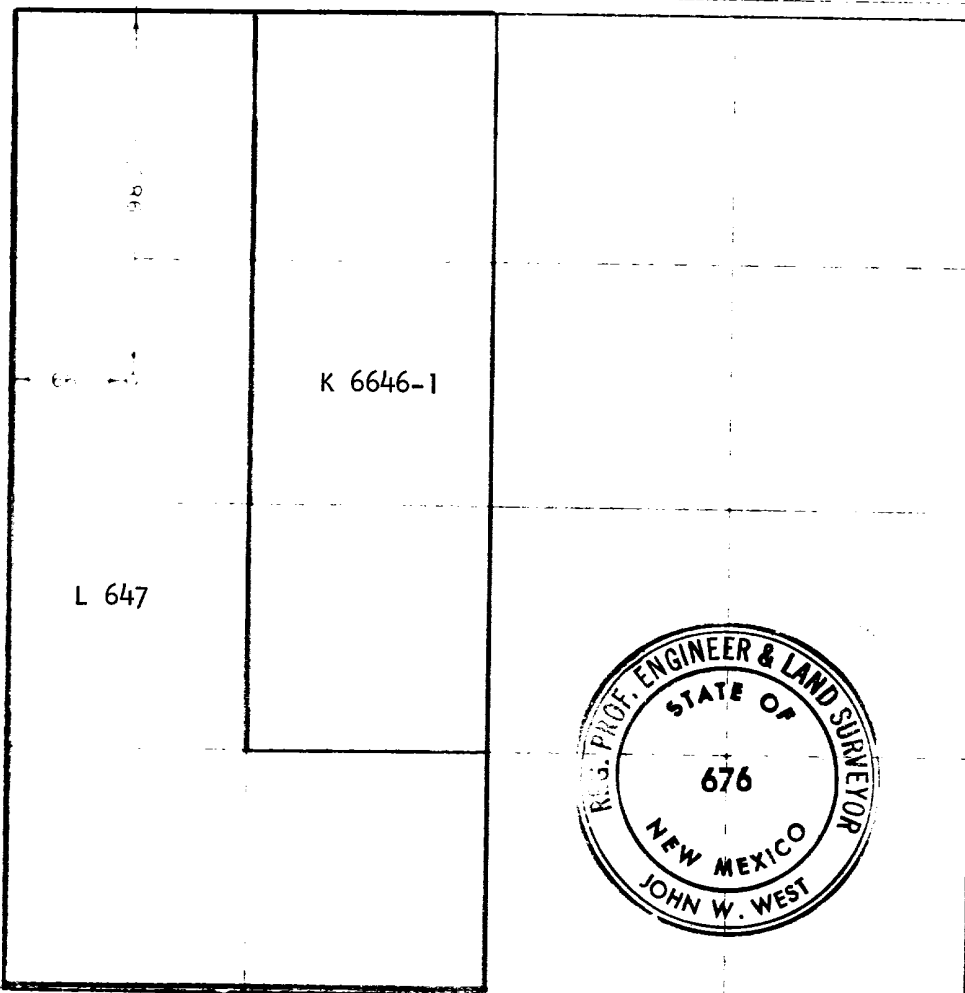
If more than one lease is dedicated to the well, outline each and identify the ownership thereof (both as to working interest and royalty).

If more than one lease or interest ownership is dedicated to the well, have the interests of all owners been consolidated by communitization, unitization, or pooling, etc?

X Yes Answer is "yes" type of consolidation Unitization

Indicate by "X" all leases and tract descriptions which have actually been consolidated. (Use reverse side of this form if necessary).

No flowline will be assigned to the well until all interests have been consolidated (by communitization, unitization, or pooling, or otherwise) or until a non-standard unit, eliminating such interests, has been approved by the Commission.



CERTIFICATION

I hereby certify that the information contained herein is true and complete to the best of my knowledge and belief.

Grant M. Smith

Grant M. Smith

Geologist

Franklin, Aston & Fair, Inc.

4-30-75

I hereby certify that the well location shown on this plat was located from field notes of actual surveys made by me or under my supervision, and that the same is true and correct to the best of my knowledge and belief.

April 23, 1975

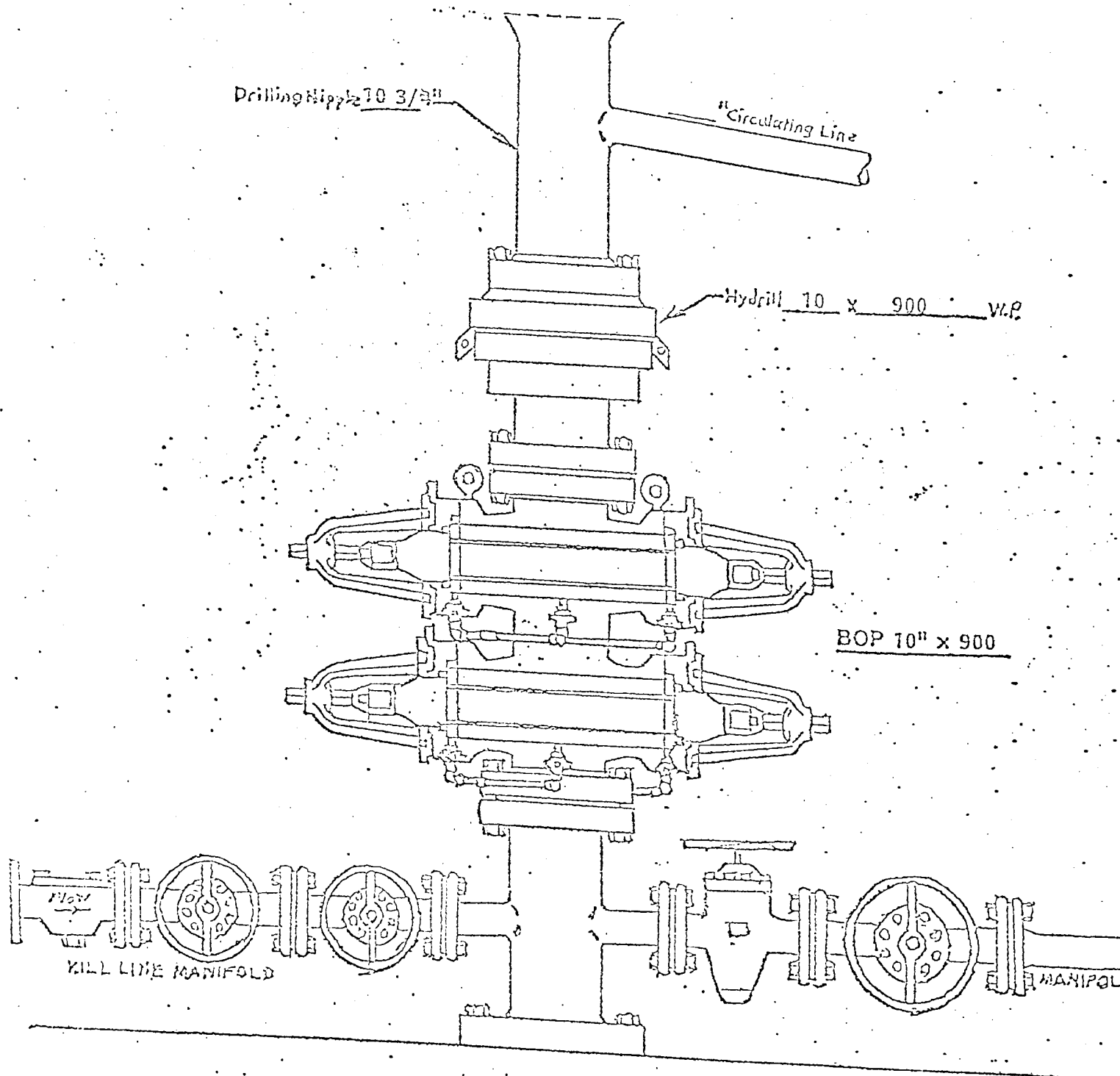
Registered Professional Engineer

John W. West

John W. West

676

Franklin, Aston & Fair, Inc.
WELL NAME: North King Camp Unit #12
LOCATION: 1980' FNL & 660' FWL, Section 36-13S-29E
Chaves County, New Mexico



WELL HEAD B.O.P.
3000 W.P.

☐ Manual
☒ Hydraulic