

UNITED STATES
DEPARTMENT OF THE INTERIOR
GEOLOGICAL SURVEY

APPLICATION FOR PERMIT TO DRILL, DEEPEN, OR PLUG BACK

1a. TYPE OF WORK

DRILL ☒DEEPEN ☐PLUG BACK ☐

b. TYPE OF WELL

OIL
WELL ☒GAS
WELL ☐

OTHER

SINGLE
ZONE ☐MULTIPLE
ZONE ☐

2. NAME OF OPERATOR

McClellan Oil Corporation

3. ADDRESS OF OPERATOR

P. O. Box 848, Roswell, New Mexico 88201

4. LOCATION OF WELL (Report location clearly and in accordance with any State requirements.)

At surface

At proposed prod. zone

1980' FNL & 1980' FWL

JUL 1 1975

14. DISTANCE IN MILES AND DIRECTION FROM NEAREST TOWN OR POST OFFICE*

14 miles East of Hagerman

O. C. C.
ARTESIA, OFFICE

15. DISTANCE FROM PROPOSED*

LOCATION TO NEAREST
PROPERTY OR LEASE LINE, FT.
(Also to nearest drlg. unit line, if any)

1980'

16. NO. OF ACRES IN LEASE

480

17. NO. OF ACRES ASSIGNED
TO THIS WELL

40

18. DISTANCE FROM PROPOSED LOCATION*

TO NEAREST WELL, DRILLING, COMPLETED,
OR APPLIED FOR, ON THIS LEASE, FT.

None

19. PROPOSED DEPTH

1350'

20. ROTARY OR CABLE TOOLS

Cable tools

21. ELEVATIONS (Show whether DF, RT, GR, etc.)

22. APPROX. DATE WORK WILL START*

June 20, 1975

23.

PROPOSED CASING AND CEMENTING PROGRAM

SIZE OF HOLE	SIZE OF CASING	WEIGHT PER FOOT	SETTING DEPTH	QUANTITY OF CEMENT
10-3/4"	8-5/8"	24 lb.	370'	*Set
8"	4-1/2"	9 1/2 lb.	1350'	150 sx

Purpose to drill to 1350' to test Queen sand. If production is indicated will set pipe and attempt completion. Cortez Drilling Company of Roswell, New Mexico, will be the drilling contractor.

* If production is achieved, will cement with 1" tubing.

IN ABOVE SPACE DESCRIBE PROPOSED PROGRAM: If proposal is to deepen or plug back, give data on present productive zone and proposed new productive zone. If proposal is to drill or deepen directionally, give pertinent data on subsurface locations and measured and true vertical depths. Give blowout preventer program, if any.

24.

SIGNED

S. L. McClellan

TITLE

Operator

DATE

June 9, 1975

(This space for Federal or State office use)

PERMIT NO.

APPROVAL DATE

APPROVED BY

TITLE

DATE

CONDITIONS OF APPROVAL, IF ANY.

ACTING DISTRICT ENGINEER

THIS APPROVAL IS RESCINDED IF OPERATIONS
ARE NOT COMMENCED WITHIN 3 MONTHS.
EXPIRES SEP 9 1975
*See Instructions On Reverse Side

NE EXICO OIL CONSERVATION COMMISSION
WELL LOCATION AND ACREAGE DEDICATION PLAT

Form C-102
Supersedes C-128
Effective 1-1-65

All distances must be from the outer boundaries of the Section.

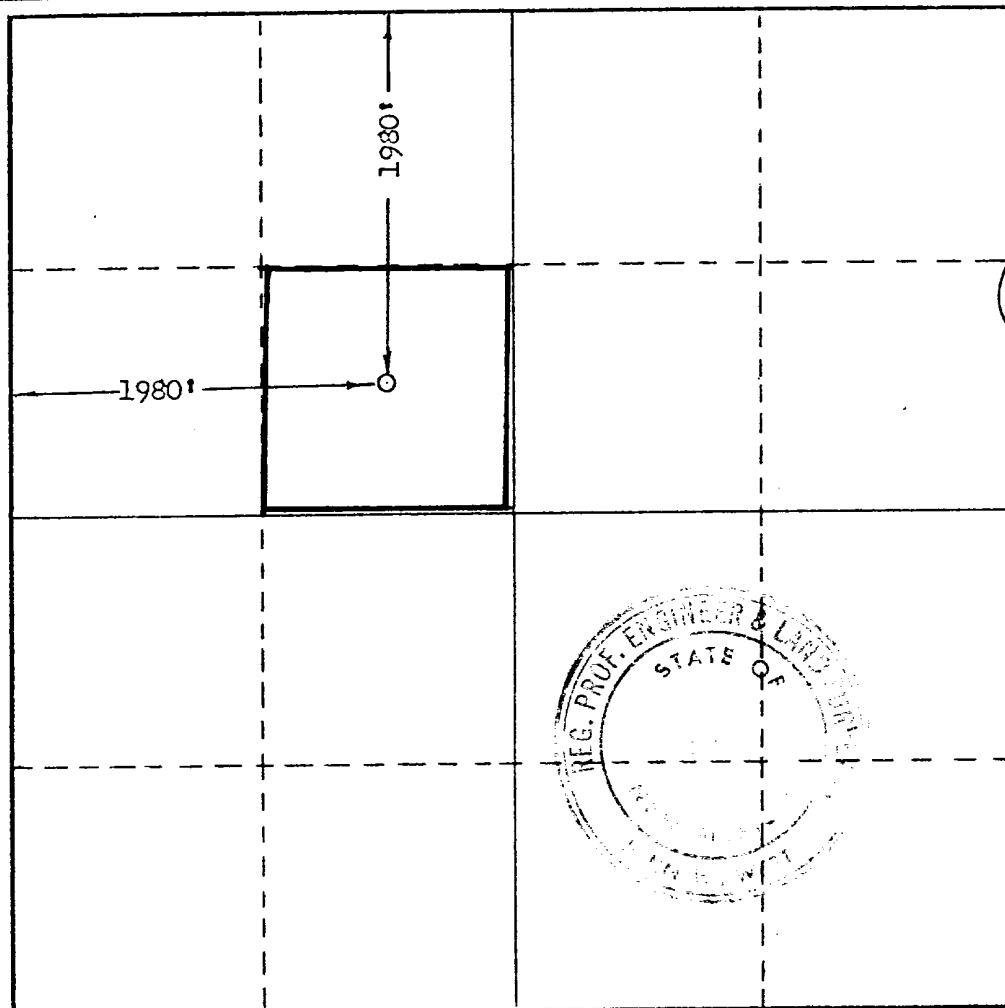
Operator McCLELLAN OIL CORPORATION			Lease Antelope Springs		Well No. 1
Unit Letter F	Section 26	Township 14 South	Range 28 East	County Chaves	
Actual Footage Location of Well: 1980 feet from the north line and 1980 feet from the west line					
Ground Level Elev.	Producing Formation Queen sand	Pool Wildcat	Dedicated Acreage: 40 Acres		

1. Outline the acreage dedicated to the subject well by colored pencil or hachure marks on the plat below.
2. If more than one lease is dedicated to the well, outline each and identify the ownership thereof (both as to working interest and royalty).
3. If more than one lease of different ownership is dedicated to the well, have the interests of all owners been consolidated by communitization, unitization, force-pooling, etc?

☐ Yes ☐ No If answer is "yes," type of consolidation _____

If answer is "no," list the owners and tract descriptions which have actually been consolidated. (Use reverse side of this form if necessary.) _____

No allowable will be assigned to the well until all interests have been consolidated (by communitization, unitization, forced-pooling, or otherwise) or until a non-standard unit, eliminating such interests, has been approved by the Commission.



CERTIFICATION

I hereby certify that the information contained herein is true and complete to the best of my knowledge and belief.

Jack L. McClellan
Name
Jack L. McClellan
Position
President
Company
McClellan Oil Corporation
Date
June 9, 1975

I hereby certify that the well location shown on this plat was plotted from field notes of actual surveys made by me or under my supervision, and that the same is true and correct to the best of my knowledge and belief.

Date Surveyed
June 7, 1975
Registered Professional Engineer and/or Land Surveyor

John W. West
Certificate No. **676**



McClellan Oil Corporation

Re: McClellan Oil Corporation
Antelope Springs No. 1
1980' FNL & 1980' FWL
Section 26, T14S-R28E
Chaves County, New Mexico

The following is a Plan of Development for Surface Use required to drill the proposed well attached to this application:

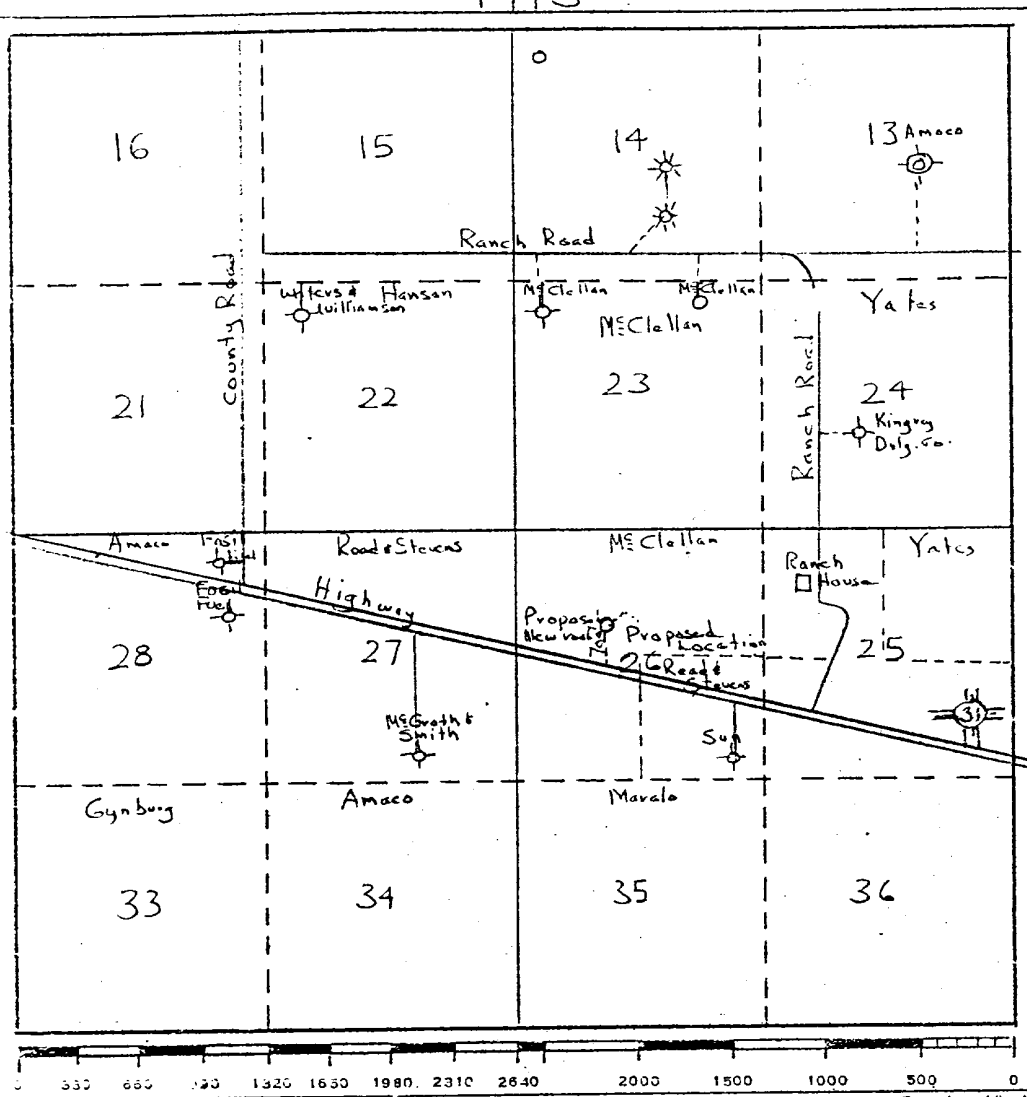
1. State Highway 31 is approximately $\frac{1}{4}$ mile South of the main County road bisecting Sections 26 and 27. Will build approximately 750' of new road.
2. The proposed road will be the only road into the proposed drillsite.
3. It is possible that other roads will be necessary to the North and South if this test is successful.
4. The production, if achieved, will be pumped into a tank battery located East of the test.
5. Drilling water will have to be turcked in as there is no source of fresh water in this area.
6. After completion of drilling operations all waste will be buried in a separate pit or hauled away.
7. Any produced brine water will be removed by truck in order to prevent contamination of any possible fresh water bearing sands in this area.
8. Cashinghead gas, if any, will await a pipeline as other shutin gas wells in this area.
9. Negotiations for a connection will be made immediatedly upon completion.
10. An attached development plat indicates location layout, rig plan, etc.
11. In the event a dry hole is achieved, all pits will be filled and the location restored, as near as possible, to its original condition.
12. If production is achieved, pad and roads will remain in effect however pits will be filled and restored, as near as possible, to their original condition.

JME

MCLELLAN OIL CORPORATION

BOX 849
ROSWELL, NEW MEXICO 89201
McClellan Oil Corp. No. 1
Chaves County, N.M.

T-14-S



R-28E

Scale = 1" = 400'

