

NO. OF COPIES RECEIVED 5

DISTRIBUTION

SANTA FE 1

FILE 1

U.S.G.S. 5

LAND OFFICE 1

OPERATOR 1

NEW MEXICO OIL CONSERVATION COMMISSION

RECEIVED

OCT 28 1975

O. C. C.

ASTORIA, OREGON

Form C-101  
Revised 1-1-65

5A. Indicate Type of Lease  
STATE ☐ FEE ☒

5. State Oil & Gas Lease No.

7. Unit Agreement Name

8. Farm or Lease Name  
Garner

9. Well No.  
1

10. Field and Pool, or Wildcat  
Wildcat

12. County  
Chavez

19. Proposed Depth  
4,000'

19A. Formation  
Aho

20. Rotary or C.T.  
Rotary

21. Elevations (Show whether DE, RT, etc.)  
3,527.3

21A. Kind & Status Plug. Bond  
\$10,000.00

21B. Drilling Contractor  
Williams Bros.

22. Approx. Date Work will start  
11-1-75

APPLICATION FOR PERMIT TO DRILL, DEEPEN, OR PLUG BACK

1a. Type of Work  
DRILL ☒ DEEPEN ☐ PLUG BACK ☐

b. Type of Well  
OIL WELL ☒ GAS WELL ☐ OTHER ☐

2. Name of Operator  
Land Oil Co. Inc.

3. Address of Operator  
P. O. Box 1201, Livingston, New Mexico

4. Location of Well  
UNIT LETTER D LOCATED 330 FEET FROM THE North LINE  
AND 330 FEET FROM THE West LINE OF SEC. 23 TWP. 14-S RGE. 25-T NMPM

23.

PROPOSED CASING AND CEMENT PROGRAM

| SIZE OF HOLE | SIZE OF CASING | WEIGHT PER FOOT | SETTING DEPTH | SACKS OF CEMENT | EST. TOP   |
|--------------|----------------|-----------------|---------------|-----------------|------------|
| 11 1/4"      | 8 5/8"         | 24 lb.          | 1100'         | 500 sacks       | All T to B |
| 7 7/8"       | 4 1/2"         | 10 lb.          | 4000'         | 150 sacks       | 3000'      |

Drill 11 1/4" hole to 1100'  
Run in and set 1100' of 8 5/8" 24 lb. casing  
Cement from bottom to surface with 500 sacks  
Install Double Schaffer P.O.P., and test to 600 lbs.  
after cementing has set 24 hrs.  
Then drill 7 7/8" hole to approximately 4000' to Aho zone  
If productive after testing, complete with 4 1/2" 10 lb.  
casing and Gun Perforate for production.

APPROVAL VALID  
FOR 90 DAYS UNLESS  
DRILLING COMMENCED,

EXPIRES 1-29-76

IN ABOVE SPACE DESCRIBE PROPOSED PROGRAM: IF PROPOSAL IS TO DEEPEN OR PLUG BACK, GIVE DATA ON PRESENT PRODUCTIVE ZONE AND PROPOSED NEW PRODUCTIVE ZONE. GIVE BLOWOUT PREVENTER PROGRAM, IF ANY.

I hereby certify that the information above is true and complete to the best of my knowledge and belief.

Signed Donald S. Sanford Title President Date 11-1-75

(This space for State Use)

APPROVED BY W. A. Gessett TITLE SUPERVISOR, DISTRICT II DATE OCT 29 1975

CONDITIONS OF APPROVAL, IF ANY:

Cement must be circulated to  
surface behind 8 7/8" casing

Notify N.M.O.C.C. in sufficient  
time to witness cementing  
the 8 7/8" casing

NEW MEXICO OIL CONSERVATION COMMISSION  
WELL LOCATION AND ACREAGE DEDICATION PLAT

Form C-102  
Supersedes C-128  
Effective 1-1-65

All distances must be from the outer boundaries of the Section.

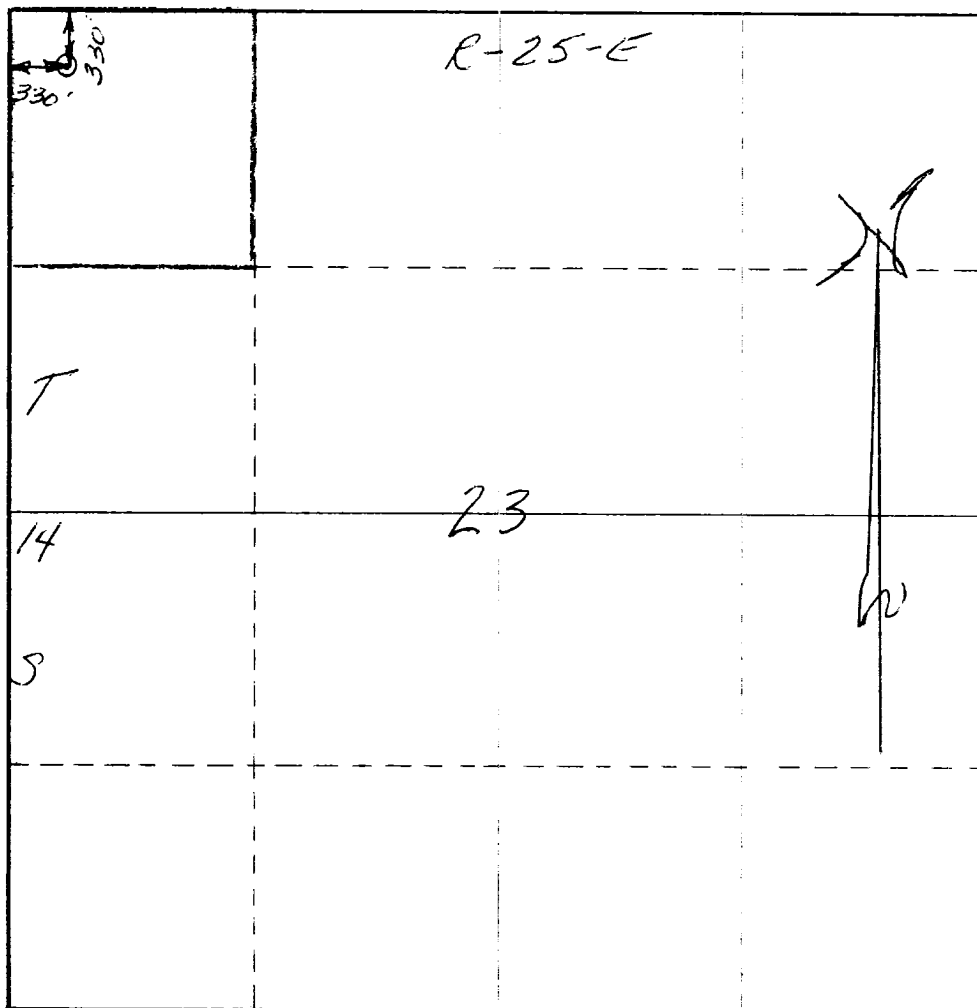
|  |                                   |                         |                                       |                         |
|--|-----------------------------------|-------------------------|---------------------------------------|-------------------------|
| Operator<br><b>Land Oil Co., Inc.</b>  |                                   | Lease<br><b>Garner</b>  |                                       | Well No.<br><b>1</b>    |
| Unit Letter  | Section<br><b>23</b>              | Township<br><b>14-S</b> | Range<br><b>25-E</b>                  | County<br><b>CHAVES</b> |
| Actual Footage Location of Well:<br><b>330</b> feet from the <b>NORTH</b> line and <b>330</b> feet from the <b>WEST</b> line |                                   |                         |                                       |                         |
| Ground Level Elev.<br><b>3527.8</b>  | Producing Formation<br><b>Abo</b> | Pool<br><b>Wildcat</b>  | Dedicated Acreage:<br><b>40</b> Acres |                         |

1. Outline the acreage dedicated to the subject well by colored pencil or hachure marks on the plat below.
2. If more than one lease is dedicated to the well, outline each and identify the ownership thereof (both as to working interest and royalty).
3. If more than one lease of different ownership is dedicated to the well, have the interests of all owners been consolidated by communitization, unitization, force-pooling, etc?

☐ Yes ☒ No If answer is "yes," type of consolidation \_\_\_\_\_

If answer is "no," list the owners and tract descriptions which have actually been consolidated. (Use reverse side of this form if necessary.) The NW 1/4 of Section 23

No allowable will be assigned to the well until all interests have been consolidated (by communitization, unitization, forced-pooling, or otherwise) or until a non-standard unit, eliminating such interests, has been approved by the Commission.



CERTIFICATION

I hereby certify that the information contained herein is true and complete to the best of my knowledge and belief.

*Donald L. Lanford*  
Donald L. Lanford

Name

President

Position

Land Oil Co.

Company

October 22, 1975

Date

I hereby certify that the well location shown on this plat was plotted from field notes of actual surveys made by me or under my supervision, and that the same is true and correct to the best of my knowledge and belief.

Date Surveyed

OCTOBER 22, 1975

Registered Professional Engineer  
and/or Land Surveyor

*J. C. Louchere*

Certificate No.

4574

0 330 660 990 1320 1650 1980 2310 2640 2970 3300