

NEW MEXICO OIL CONSERVATION COMMISSION
WELL LOCATION AND ACREAGE DEDICATION PLAT

Form C-100
Superseded by 128
Effective 1-1-65

All distances must be from the outer boundaries of the Section.

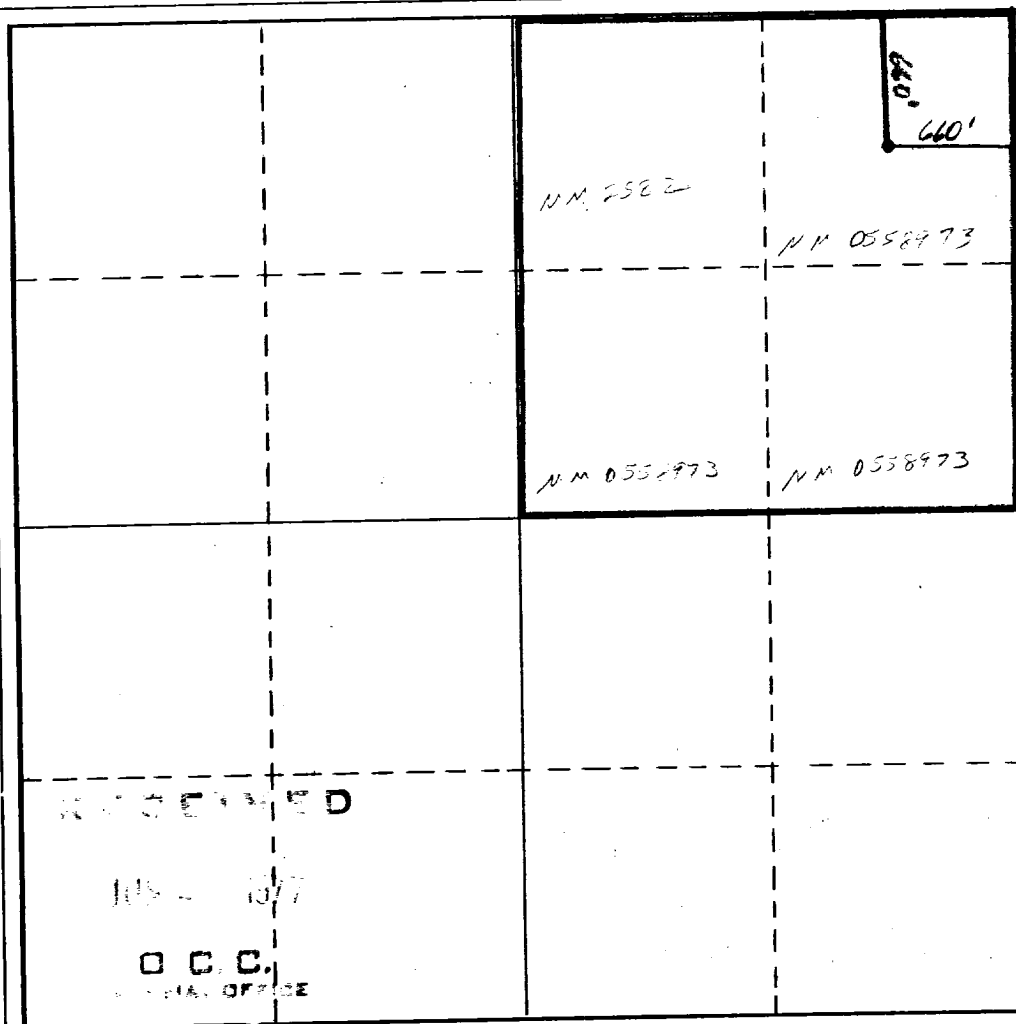
Operator C. E. LaRue and B. N. Muncy, Jr.			Lease Lillie Federal Com.		Well No. 1
Unit Letter A	Section 17	Township 14S	Range 28E	County Chaves	
Actual Footage Location of Well: 660 feet from the North line and 660 feet from the East line					
Ground Level Elev. 3563 GL	Producing Formation Premier		Pool Loma Ranch-Grayburg	Dedicated Acreage: 160 Acres	

- Outline the acreage dedicated to the subject well by colored pencil or hachure marks on the plat below.
- If more than one lease is dedicated to the well, outline each and identify the ownership thereof (both as to working interest and royalty).
- If more than one lease of different ownership is dedicated to the well, have the interests of all owners been consolidated by communitization, unitization, force-pooling, etc?

☒ Yes ☐ No If answer is "yes," type of consolidation Communitization

If answer is "no," list the owners and tract descriptions which have actually been consolidated. (Use reverse side of this form if necessary.)

No allowable will be assigned to the well until all interests have been consolidated (by communitization, unitization, forced-pooling, or otherwise) or until a non-standard unit, eliminating such interests, has been approved by the Commission.



CERTIFICATION

I hereby certify that the information contained herein is true and complete to the best of my knowledge and belief.

Name
[Signature]
Position
Operator
Company
C. E. LaRue and B. N. Muncy, Jr.
Date
June 1, 1977

I hereby certify that the well location shown on this plat was plotted from field notes of actual surveys made by me or under my supervision, and that the same is true and correct to the best of my knowledge and belief.

See original Plat

Date Surveyed

Registered Professional Engineer and/or Land Surveyor

Certificate No.

