

NEW MEXICO OIL CONSERVATION COMMISSION
WELL LOCATION AND ACREAGE DEDICATION PLAT

Form C-102
Supersedes C-128
Effective 1-1-65

All distances must be from the outer boundaries of the Section

RECEIVED
JUL 19 1976
U.S. GEOLOGICAL SURVEY
ARTLSA, NEW MEXICO

| | | | | |
|--|---------------------|-----------------------------|-------------------------|-------------------------|
| Operator <i>C.E. La Rue & Muncy Jr.</i> | | Lease Nola - Fed | | Well No. 2 |
| First Letter M | Section 8 | Township 14 South | Range 28 East | County Chaves |

Actual Footage Location of Well:

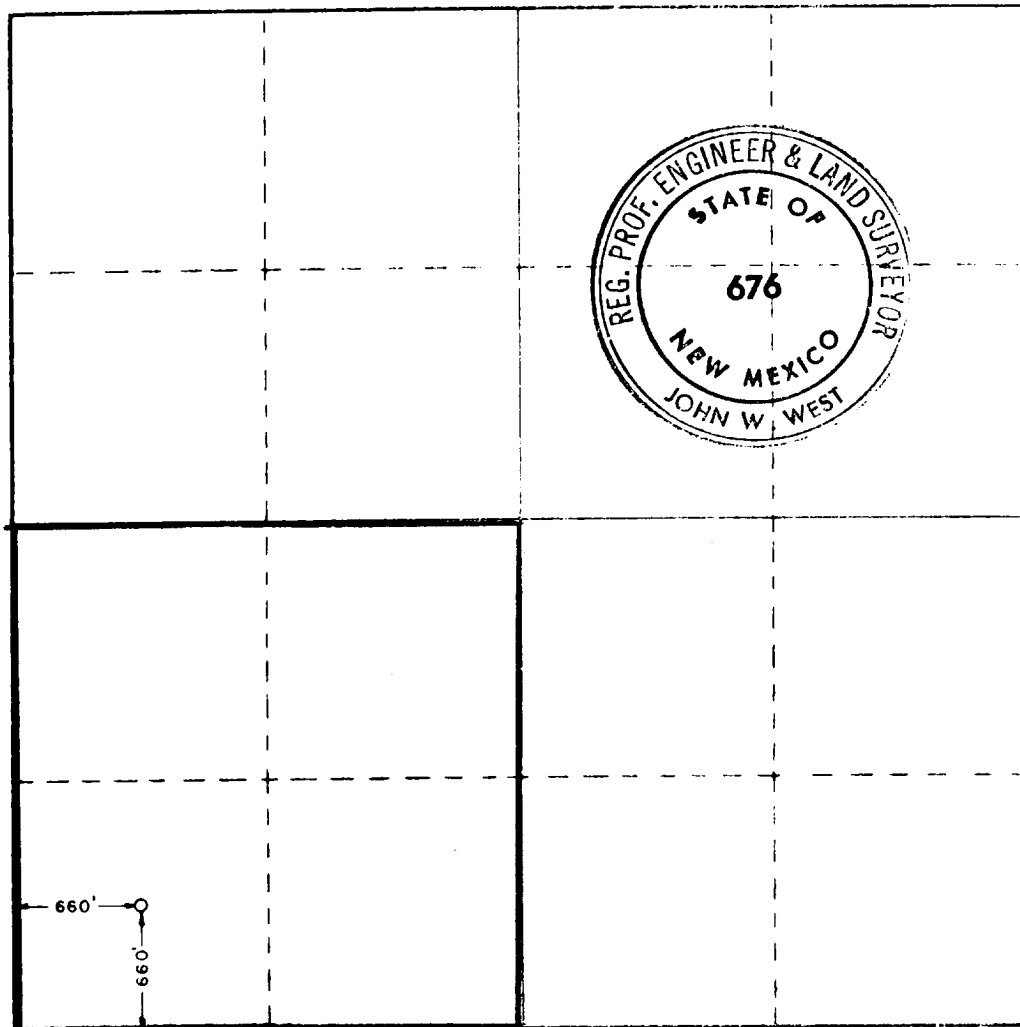
| | | | | | | | | |
|-----------------------------------|--|--------------|---------------------|------------|-----------------------------------|-------------|------|-------|
| 660 | feet from the | South | line and | 660 | feet from the | West | line | |
| Ground Level Elev. 3545 | Producing Formation <i>Grayburg</i> | | Pool <i>Unit</i> | | Dedicated Acreage: 16.0 | | | Acres |

- Outline the acreage dedicated to the subject well by colored pencil or hatchure marks on the plat below.
- If more than one lease is dedicated to the well, outline each and identify the ownership thereof (both as to working interest and royalty).
- If more than one lease of different ownership is dedicated to the well, have the interests of all owners been consolidated by communitization, unitization, force-pooling, etc?

☐ Yes ☐ No If answer is "yes," type of consolidation _____

If answer is "no," list the owners and tract descriptions which have actually been consolidated (Use reverse side of this form if necessary.) _____

No allowable will be assigned to the well until all interests have been consolidated (by communitization, unitization, forced-pooling, or otherwise) or until a non-standard unit, eliminating such interests, has been approved by the Commission.



CERTIFICATION

I hereby certify that the information contained herein is true and complete to the best of my knowledge and belief

B. N. Muncy, Jr.

Name
B. N. Muncy, Jr.

Position
Operator

Company
C.E. LaRue and B.N. Muncy, Jr.

Date
July 19, 1976

I hereby certify that the well location shown on this plat was plotted from field notes of actual surveys made by me or under my supervision, and that the same is true and correct to the best of my knowledge and belief.

July 15, 1976

Date Surveyed

Registered Professional Engineer
in Land and Surveying

John W. West
Certificate No. **676**

