

NO. OF COPIES RECEIVED	6
DISTRIBUTION	
SANTA FE	1
FILE	1
U.S.G.S.	2
LAND OFFICE	1
OPERATOR	1

# NEW MEXICO OIL & GAS COMMISSION

DEC 16 1976

10010

30-005-60404

Form C-101  
Revised 1-1-65

5A. Indicate Type of Lease STATE <input checked="" type="checkbox"/> FEE <input type="checkbox"/>
5. State Oil & Gas Lease No. K-4243
7. Unit Agreement Name
8. Farm or Lease Name ELKINS STATE
9. Well No. 1
10. Field and Pool, or Wildcat WILDCAT POOL
12. County CHAVES
16. Proposed Depth 7500
19A. Formation DEVONIAN
20. Rotary or C.T. ROTARY
21. Elevations (Show whether D.L., R.L., etc.) 4049.3 GL
21A. Kind & Status Plug, Bond BLANKET-CURRENT
21B. Drilling Contractor TBS
22. Approx. Date Work will start 15 FEBRUARY 1976

APPLICATION FOR PERMIT TO DRILL, DEEPEN, OR PLUG BACK	
1a. Type of Work b. Type of Well OIL WELL <input checked="" type="checkbox"/> GAS WELL <input type="checkbox"/> OTHER <input type="checkbox"/> SINGLE ZONE <input type="checkbox"/> MULTIPLE ZONE <input type="checkbox"/>	2. Name of Operator LAYTON ENTERPRISES, INC. ✓
3. Address of Operator 3103 79th St. LUBBOCK, TEXAS 79423	4. Location of Well UNIT LETTER N LOCATED 660 FEET FROM THE SOUTH LINE AND 1980 FEET FROM THE WEST LINE OF SEC. 1 T4S R2E 28E NMPM
23. PROPOSED CASING AND CEMENT PROGRAM	

SIZE OF HOLE	SIZE OF CASING	WEIGHT PER FOOT	SETTING DEPTH	SACKS OF CEMENT	EST. TOP
17 1/2	13 3/8	48	210	300	CIRCULATE
12 1/2	8 7/8	24	2000	800	CIRCULATE
7 7/8	5 1/2	17	7500	400	5000

BLOWOUT PREVENTER: SHAFFER LWS HYDRAULIC DOUBLE 10" X 900 SERIES WITH PAYNE 4-VALVE ACCUMULATOR CLOSING UNIT. (OR EQUIVALENT)  
TEST PIPE RAMS DAILY, BLIND RAMS WHEN PIPE OUT OF HOLE.

3-21-77

IN ABOVE SPACE DESCRIBE PROPOSED PROGRAM; IF PROPOSAL IS TO DEEPEN OR PLUG BACK, GIVE DATA ON PRESENT PRODUCTIVE ZONE AND PROPOSED NEW PRODUCTIVE ZONE, GIVE BLOWOUT PREVENTER PROGRAM, IF ANY.

I hereby certify that the information above is true and complete to the best of my knowledge and belief.

Signed Ronald L. Layton Title PRESIDENT Date 12-13-76  
(This space for State Use)

APPROVED BY W. A. Gussert TITLE SUPERVISOR DISTRICT II DATE DEC 21 1976  
CONDITIONS OF APPROVAL, IF ANY:

NEW MEXICO OIL CONSERVATION COMMISSION  
WELL LOCATION AND ACREAGE DEDICATION PLAT

Form C-128  
Supersedes C-128  
Effective 1-1-65

All distances must be from the outer boundaries of the Section

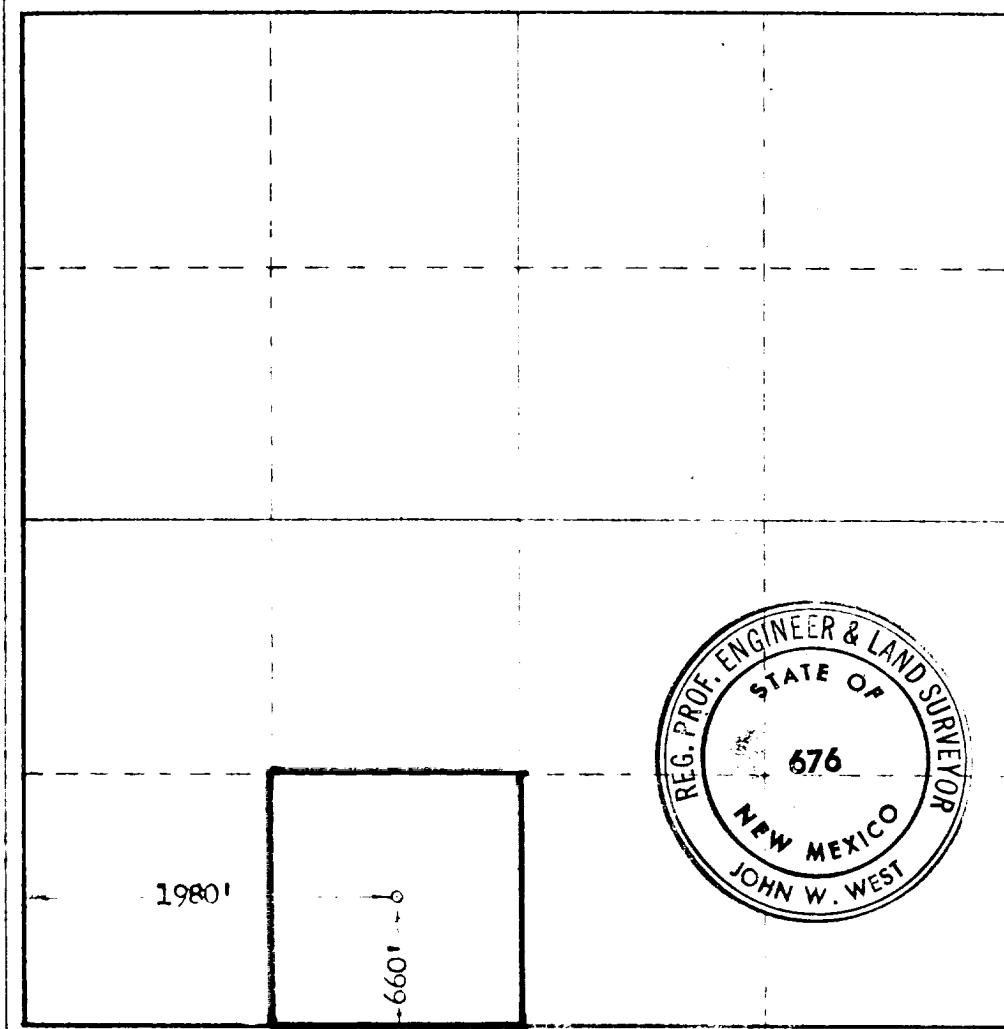
Operator <u>Layton Enterprises Inc.</u> <del>HARVARD EXPLORATION &amp; DEVELOPMENT CORP.</del>		Lease <u>Elkins- State</u>		Well No. <u>1</u>
Unit Letter <b>N</b>	Section <b>1</b>	Township <b>7 South</b>	Range <b>28 East</b>	County <b>Chaves</b>
Actual Footage Location of Well: <b>660</b> feet from the <b>south</b> line and <b>1980</b> feet from the <b>west</b> line				
Ground Level Elev. <b>4049.3</b>	Producing Formation <b>Devonian</b>	Pool <b>Undesignated</b>	Estimated Acreage: <b>40</b> Acres	

- Outline the acreage dedicated to the subject well by colored pencil or hatchure marks on the plat below.
- If more than one lease is dedicated to the well, outline each and identify the well (give both as to working interest and royalty).
- If more than one lease of different ownership is dedicated to the well, have the interests of all owners been consolidated by communitization, unitization, force-pooling, etc?

☐ Yes ☐ No If answer is "yes" type of consolidation Force Pooling

If answer is "no," list the owners and tract descriptions which have actually been consolidated (Use reverse side of this form if necessary.)

No allowable will be assigned to the well until all interests have been consolidated (by communitization, unitization, forced-pooling, or otherwise) or until a non-standard unit, eliminating such interests, has been approved by the Commission.



CERTIFICATION

I hereby certify that the information contained herein is true and complete to the best of my knowledge and belief.

*Donald R. Layton*

Donald R. Layton

President

Layton Enterprises, Inc.

13 December 1976

I hereby certify that the well location shown on this plat was plotted from field notes of actual surveys made by me or under my supervision, and that the same is true and correct to the best of my knowledge and belief.

Date surveyed  
Dec. 29, 1975

Registered Professional Engineer  
and a Land Surveyor

*John W. West*

676

0 330 660 990 1320 1650 1980 2310 2640 2970 3300 3630 3960 4290 4620 4950 5280 5610 5940 6270 6600