

UNITED STATES
DEPARTMENT OF THE INTERIOR

GEOLOGICAL SURVEY

APPLICATION FOR PERMIT TO DRILL, DEEPEN, OR PLUG BACK

1a. TYPE OF WORK

DRILL ☒DEEPEN ☐PLUG BACK ☐

b. TYPE OF WELL

OIL
WELL ☐GAS
WELL ☒OTHER ☐

RECEIVED

2. NAME OF OPERATOR

Samedan Oil Corporation

3. ADDRESS OF OPERATOR

900 Wall Towers East; Midland, Texas 79701

4. LOCATION OF WELL (Report location clearly and in accordance with any State requirements.)

At surface

1980' FWL and 746' FSL + 1980' WARTESIA, OFFICE

At proposed prod. zone

Same

14. DISTANCE IN MILES AND DIRECTION FROM NEAREST TOWN OR POST OFFICE*

20.8 miles (driving distance) east of the intersection of Hwys.

15. DISTANCE FROM PROPOSED

LOCATION TO NEAREST

PROPERTY OR LEASE LINE, FT.

(Also to nearest drilg. unit line, if any)

1980'

1720

18. DISTANCE FROM PROPOSED LOCATION*

TO NEAREST WELL, DRILLING, COMPLETED,

OR APPLIED FOR, ON THIS LEASE, FT.

None

19. PROPOSED DEPTH

1750'

21. ELEVATIONS (Show whether DF, RT, GR, etc.)

3487.2' Ground Level

7. UNIT AGREEMENT NAME

8. FARM OR LEASE NAME

Abbott Federal

9. WELL NO.

1

10. FIELD AND POOL, OR WILDCAT

Wildcat 3-SH

11. SEC., T., R., M., OR BLK.
AND SURVEY OR AREA

Sec. 6-T14S-R28E

12. COUNTY OR PARISH

Chaves

N.M.

17. NO. OF ACRES ASSIGNED
TO THIS WELL

160

20. ROTARY OR CABLE TOOLS

Rotary

22. APPROX. DATE WORK WILL START*

February 15, 1977

23.

PROPOSED CASING AND CEMENTING PROGRAM

SIZE OF HOLE

1 1/2"

7 7/8"

SIZE OF CASING

8 5/8"

5 1/2"

WEIGHT PER FOOT

24#

15 1/2#

SETTING DEPTH

200'

1750'

QUANTITY OF CEMENT

150 sx Class C 2- CaCl

300 sx Class C

Fluid Program: Salt water to total depth

BOP Program: 8" Schaefer 600 Series double BOP

RECEIVED

JAN 07 1977

U.S. GEOLOGICAL SURVEY
ARTESIA, NEW MEXICO

GAS NOT DEDICATED

IN ABOVE SPACE DESCRIBE PROPOSED PROGRAM: If proposal is to deepen or plug back, give data on present productive zone and proposed new productive zone. If proposal is to drill or deepen directionally, give pertinent data on subsurface locations and measured and true vertical depths. Give blowout preventer program, if any.

24.

SIGNED

Ken J. McLean

TITLE

Production Superintendent

DATE 1/6/77

(This space for Federal or State office use)

PERMIT NO.

APPROVAL DATE

APPROVED

APPROVED BY

CONDITIONS OF APPROVAL, IF ANY

THIS APPROVAL IS RESCINDED IF OPERATIONS
ARE NOT COMMENCED WITHIN 3 MONTHS.
EXPIRES JAN 4 1977

DATE

ACTING DISTRICT ENGINEER

*See Instructions On Reverse Side

WELL LOCATION AND ACREAGE DEDICATION AT

Supersedes C-128
Effective 1-1-65

All distances must be from the outer boundaries of the Section.

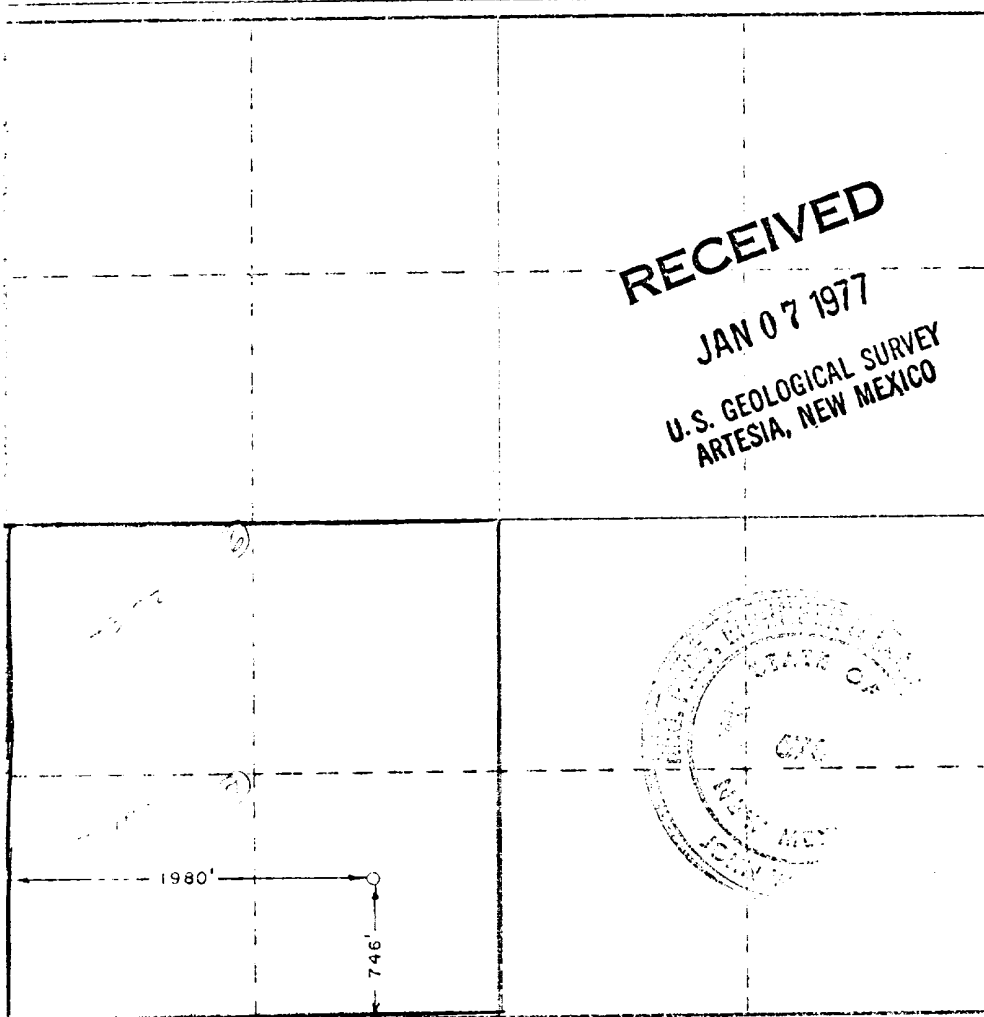
Operator SAMEDAN OIL COMPANY		Lease Abbott-Federal		Well No. 1	
Section 6	Township 14 South	Range 28 East	County Chaves		
Location of Well: 746 feet from the south line and 1980 feet from the west line. Section Elev. 3467.2 Producing Formation G-SF Pool Richman Dedicated Acreage 167.36 Acres					

- Outline the acreage dedicated to the subject well by colored pencil or hachure marks on the plat below.
- If more than one lease is dedicated to the well, outline each and identify the ownership thereof (both as to working interest and royalty).
- If more than one lease of different ownership is dedicated to the well, have the interests of all owners been consolidated by communitization, unitization, force-pooling, etc?

☐ Yes ☐ No If answer is "yes," type of consolidation _____

If answer is "no," list the owners and tract descriptions which have actually been consolidated. (Use reverse side of this form if necessary.) _____

No allowable will be assigned to the well until all interests have been consolidated (by communitization, unitization, forced-pooling, or otherwise) or until a non-standard unit, eliminating such interests, has been approved by the Commission.



CERTIFICATION

I hereby certify that the information contained herein is true and complete to the best of my knowledge and belief.

Name

Ron L. Mercer

Position

Production Superintendent

Company

Samedan Oil Corporation

Date

January 6, 1977

I hereby certify that the well location shown on this plat was plotted from field notes of actual surveys made by me or under my supervision, and that the same is true and correct to the best of my knowledge and belief.

Date Surveyed

Dec. 28, 1976

 Registered Professional Engineer
and/or Land Surveyor

 Signature: *John W. West*
 Certificate No. 676

APPLICATION FOR DRILLING
SAMEDAN OIL CORPORATION
WELL: ABBOTT FEDERAL NO. 1
CHAVES COUNTY, NEW MEXICO

In conjunction with Form 9-331 C, Application for Permit to Drill, subject well in Section 6, Township 14 South, Range 28 East, Chaves County, New Mexico, Samedan Oil Corporation submits the following ten items of pertinent information in accordance with U.S.G.S. requirements.

1. The geologic surface formation is Quaternary Alluvium and bolson deposits and other surficial deposits.
2. The estimated tops of geologic markers are as follows:

Yates	276'
Queen	1087'
San Andres	1590'
Abo	5175'

3. The estimated depths at which anticipated water, oil and gas formations are expected to be encountered are:

Water: Spotty, possibly at approximately 500 ft.

Gas: Queen-San Andres at approximately 1550 to 1750 feet.

4. Proposed casing program: See Form 9-331-C.
5. Pressure control equipment: See Form 9-331-C.
6. Mud Program: See Form 9-331-C.
7. Auxiliary equipment: Will use a 2" Manual BOP during completion operations.
8. Testing, logging and coring programs: No testing or coring. Gamma Ray Neutron logging.
9. No abnormal pressures or temperatures are anticipated.
10. Anticipated starting date: February 15, 1977.

RECEIVED
JAN 07 1977
U.S. GEOLOGICAL SURVEY
ARTESIA, NEW MEXICO

MULTI-POINT SURFACE USE AND OPERATIONS PLAN

SAMEDAN OIL CORPORATION
WELL: ABBOTT FEDERAL NO. 1
1980' FWL and 746' FSL, SEC. 6-T14S-R28E
CHAVES COUNTY, NEW MEXICO
LEASE: NM 23279
(EXPLORATORY WELL)

This plan is submitted with Form 9-331 C, Application for Permit to Drill, covering the above described well. The purpose of this plan is to describe the location of the proposed well, the proposed construction activities and operations plan, the magnitude of necessary surface disturbance involved, and the procedures to be followed in rehabilitating the surface after completion of the operations, so that a complete appraisal can be made of the environmental effects associated with operation.

RECEIVED
JAN 07 1977
U.S. GEOLOGICAL SURVEY
ARRESTA NEW MEXICO

1. EXISTING ROADS.

- A. Exhibit A is a copy of portions of BLM quad maps nos. SE-18 and SE-19, joined together, showing the location of the proposed well and the area surrounding the location on a scale of $\frac{1}{2}$ inch to a mile. The well location is a total driving distance of approximately 20.8 miles east of the intersection of Highways 31, 2 and Alternate 285 in Hagerman, New Mexico, and is indicated in red on Exhibit A.
- (1.) Proceed east from this intersection on Highway 31 for a distance of approximately 14.3 miles to reach the turnoff onto the north-bound (pipeline) access road leading to the proposed location. There is a cattleguard at the entrance to this dirt access road, which runs in a northwesterly direction. (Directly across Highway 31 from the entrance to the access road is a southbound dirt road, marked by a sign reading "Maralo, Inc.")
 - (2.) Proceed on the dirt access (pipeline) road for approximately 4.5 miles to a ranch road leading off to the left. En route to this point, you will pass the following points, which will serve as landmarks:
 - (a.) A second cattleguard, approximately $\frac{1}{10}$ of a mile from Highway 31.
 - (b.) A road leading to the Harry Ptasynski well location, on the right (east), approximately

3.8 miles beyond this second cattleguard. The Harry Ptasynski well location is currently under development at 660' FSL and 660' FWL, Section 4-14S-28E. Just before reaching this point, the pipeline road passes through a relatively deep "draw."

(c.) The ranch road which serves as an access road to the proposed well location is located approximately 6/10 of a mile beyond the Harry Ptasynski location, and forks to the left from the pipeline road. Take this left fork.

(3.) Proceed on this ranch road for 2.0 miles. The road includes several curves and some minor shifts in elevation en route to the proposed location, which is very close to the road on the left hand side of the road. The site is well marked with surveyor's flags.

(4.) It is not anticipated that any caliche fill will be necessary on the existing access roads. The ranch road would require bulldozing and blading over most of its length, but the soil is generally satisfactory to serve as the surface of the road.

(5) There is an alternate route to the location from the pipeline road, as indicated in green on Exhibit A. This route is approximately the same length as the recommended route, but includes a few areas which would be slightly more difficult for the movement of a drilling rig and other heavy equipment.

2. PLANNED ACCESS ROAD.

A. The new road to the wellsite will be approximately 200 feet in length and 12 feet in width. This road is shown in blue on Exhibit B. It will run in a generally northwest-to-southeast direction from the existing road and will join the drilling pad at the northeast corner of the pad. The road will be blade-scraped and it is anticipated that the surface will be hard enough to make it unnecessary to cover the road with caliche.

3. LOCATION OF EXISTING WELLS.

A. Existing wells within a two-mile radius of the proposed wellsite are shown in Exhibit C.

4. LOCATION OF EXISTING AND/OR PROPOSED FACILITIES.

A. At the present time, there is no production equipment

on this lease.

- B. No tank batteries, production lines, or service lines will be installed by the operator if the proposed well is productive. All gathering lines will be installed by the gas purchaser.

5. LOCATION AND TYPE OF WATER SUPPLY.

- A. It is planned to drill the proposed well with a salt water system. The water will be hauled to the location by truck over the existing roads and proposed new road, shown in Exhibits A and 3.

6. SOURCE OF CONSTRUCTION MATERIALS.

- A. It is not anticipated that any caliche will be required in the construction of the drilling pad or the proposed new road, or in the work to be performed in improving the existing access roads. The surface of these roads and the drilling pad will be sufficiently hard without the addition of a caliche surface.
- B. There is an open caliche pit in the northwest quarter of Section 17-14S-28E, which can be used as a source of caliche in the event that any small road-surface areas should, contrary to expectations, require limited quantities of caliche for surface reinforcement. This caliche pit is accessible via a west-bound road which joins the pipeline road in the lower portion of Section 9. The caliche pit is located a total distance of approximately 5.1 miles from the wellsite. Caliche would also be available adjacent to the alternate access road described in paragraph 1 A (5) above, although this would require the opening of a new pit.

7. METHODS OF HANDLING WASTE DISPOSAL.

- A. All cuttings will be disposed of in the drilling pits.
- B. Drilling fluids will be allowed to evaporate in the reserve pit until the pit is dry.
- C. No oil or water has been produced by the other wells in the area of the proposed well, and no such production is anticipated. In the event, however, that there is such production, water produced during tests will be disposed of in the drilling pit, and oil produced during tests will be stored in test tanks until sold.
- D. Current laws and regulations pertaining to the disposal of human waste will be complied with.

- E. Trash, waste paper, garbage and junk will be buried in a separate trash pit and covered with a minimum of 24 inches of dirt. All waste material will be contained to prevent scattering by the wind.
 - F. All trash and debris will be buried or removed from the wellsite within 30 days after finishing drilling and/or completion operations.
- 8. ANCILLARY FACILITIES.
 - A. None required.
- 9. WELLSITE LAYOUT.
 - A. Exhibit B shows the relative location and dimensions of the well pad, reserve pit, and major rig components.
 - B. The wellsite location rises gently from north to south. The higher level portion of the proposed well pad will be cut and leveled, and the soil thus removed will be used to fill and level the lower portion of the pad.
 - C. There are no plans to line the earthen reserve pit, since it should seal quite rapidly with drill solids and bentonite. Water used for drilling is of discharge quality.
 - D. The pad and pit area, as well as the proposed newly constructed access road, have been staked and flagged.
- 10. PLANS FOR RESTORATION OF THE SURFACE.
 - A. After completion of drilling and/or completion operations, all equipment and other material not needed for operations will be removed. Pits will be filled and the location cleaned of all trash and junk to leave the wellsite in as aesthetically pleasing a condition as possible.
 - B. Any unguarded pits containing fluids will be fenced until they have been filled.
 - C. If the proposed well is non-productive, all rehabilitation and/or vegetation requirements of the Bureau of Land Management and the United States Geological Survey will be complied with and will be accomplished as expeditiously as possible. All pits will be filled and leveled within 90 days after abandonment.
- 11. OTHER INFORMATION.
 - A. Topography: The land surface at the location inclines gently upward from the existing access road, with a rise of about 8 feet over the 200 lateral feet from the

road to the wellsite. There are only minor undulations in the surface.

- B. The topsoil at the wellsite is moderately hard sand.
- C. Flora and Fauna: The vegetation cover is moderately heavy, consisting of typical semi-arid growth such as prairie grass, broom weed, mesquite, cockleburrs, and miscellaneous weeds. Wildlife is typical of semi-arid desert land, including rabbits, kangaroo rats, reptiles, coyotes, doves, etc. The area is used for cattle grazing.
- D. There are no streams, rivers, ponds or lakes in the area.
- E. There are no occupied dwellings in the area of the wellsite.
- F. Surface Ownership: The wellsite is on federal surface.
- G. There is no evidence of any archeological, historical, or cultural sites in the area.

12. OWNER'S REPRESENTATIVE.

- A. The field representative responsible for assuring compliance with the approved surface use and operations plan is:

Mr. E. E. Frizzell
Field Foreman
Samedan Oil Corporation
P. O. Box 190
Hobbs, New Mexico 88240

Telephone: 505-393-2512 (office)
505-392-6080 (home)

13. CERTIFICATION.

- A. See attachment.

SAMEDAN OIL CORPORATION
WELL #ABBOTT FEDERAL #1

CERTIFICATION

I hereby certify that I, or persons under my direct supervision, have inspected the proposed drillsite and access route; that I am familiar with the conditions which presently exist; that the statements made in this plan are, to the best of my knowledge, true and correct; and that the work associated with the operations proposed herein will be performed by Samedan Oil Corp. and their contractors and subcontractors in conformity with this plan and the terms and conditions under which it is approved.



Name and Title

January 6, 1977

Date

ARTUREAU OF LAND MANAGEMENT

R. 26 E. R. 27 E. R. 28 E. R. 29 E.

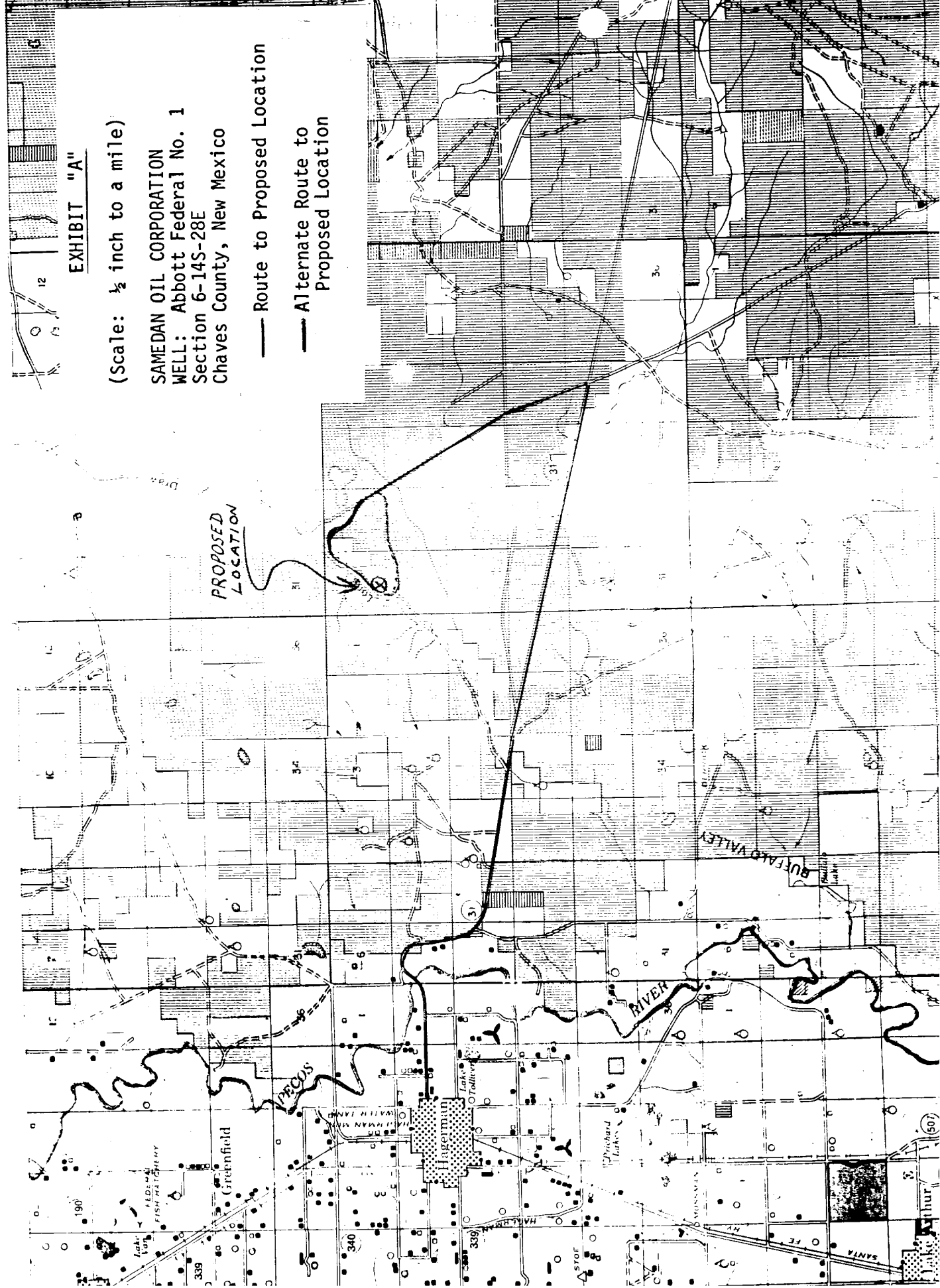


EXHIBIT "B"
(Scale: 1 inch = 40 ft.)
SAMEDAN OIL CORPORATION
WELL: Abbott Federal #1
Section 6-14S-28E
Chaves County, New Mexico

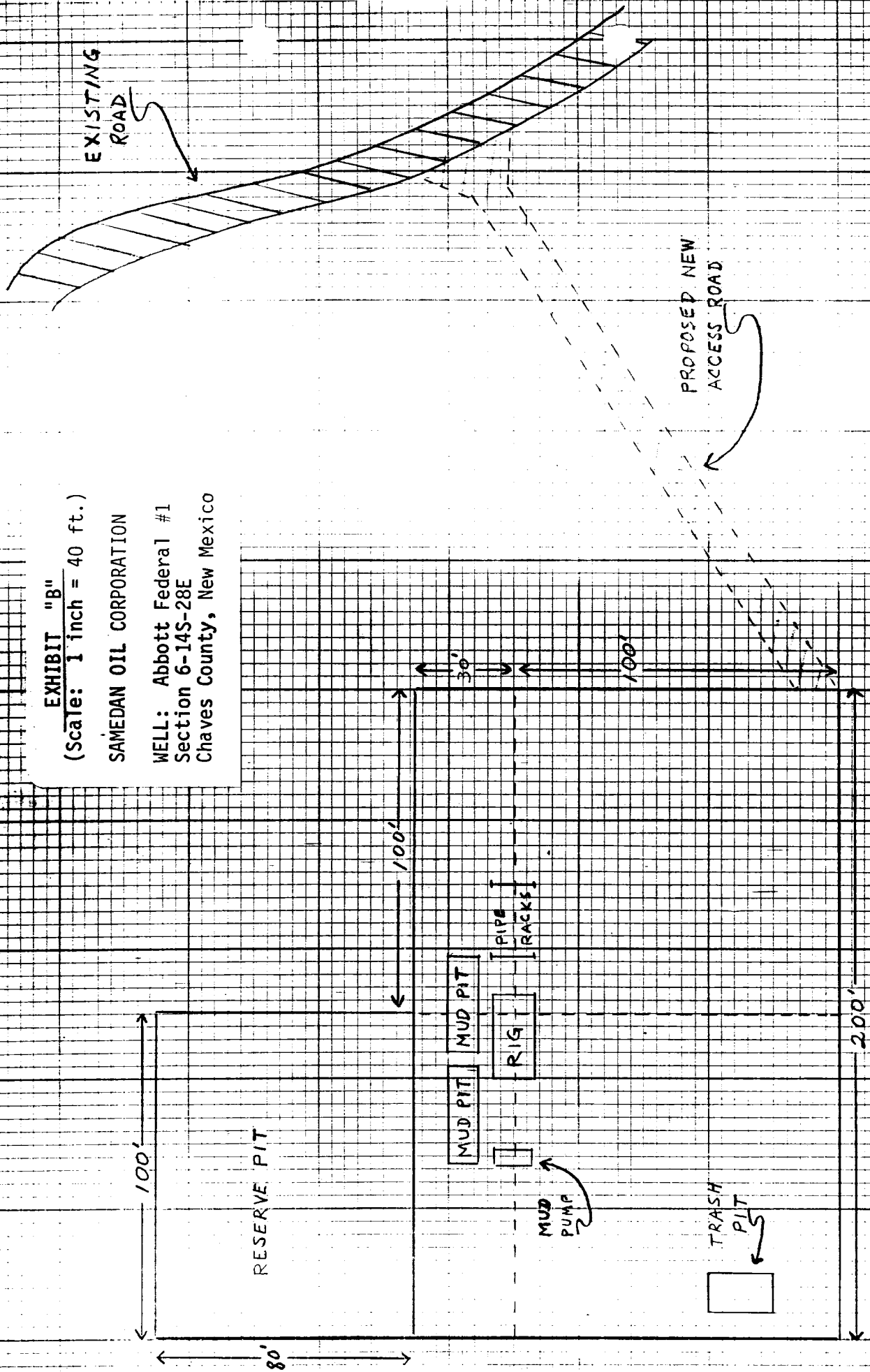


EXHIBIT "C"

(Scale: 1 square inch equals
1 section

1 inch equals 5,280
feet)

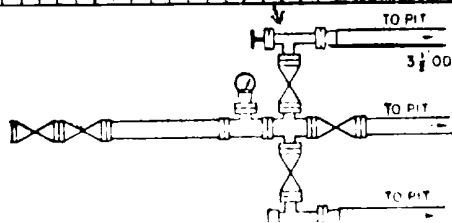
SAMEDAN OIL CORPORATION

WELL: Abbott Federal No. 1
Section 6-14S-28E
Chaves County, New Mexico

⊕ Gas Well

● Dry Hole

⊗ Proposed Location



R 28 E

R 27 E

T 13 S

T 14 S

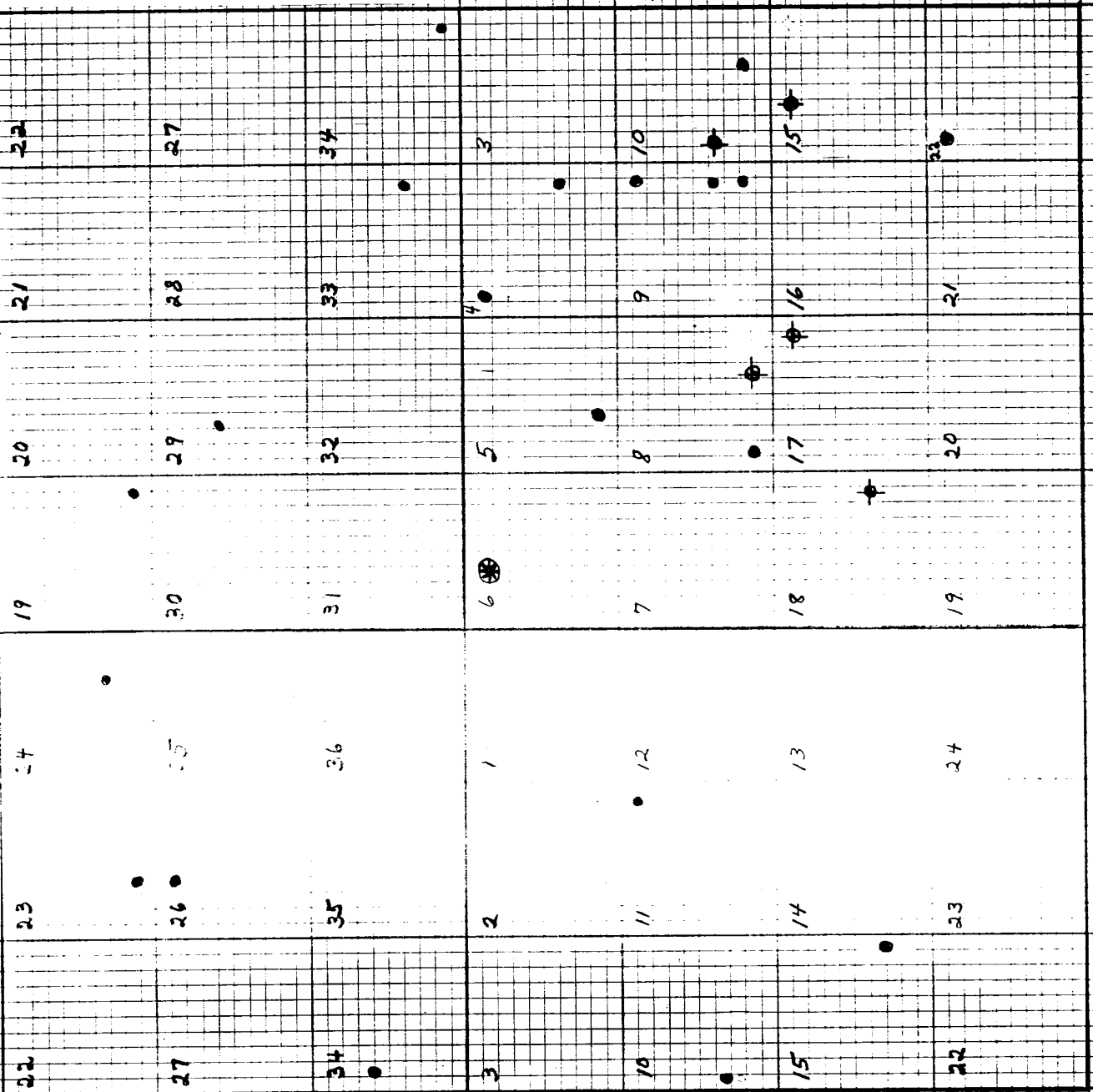
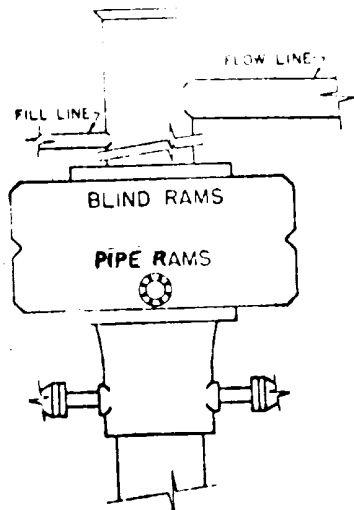


EXHIBIT "D"

SAMEDAN OIL CORPORATION

WELL: Abbott Federal No. 1
Section 6-14S-28E
Chaves County, New Mexico

BLOWOUT PREVENTER



CHOKE MANIFOLD

