

UNITED STATES
DEPARTMENT OF THE INTERIOR

GEOLOGICAL SURVEY

RECEIVED

APPLICATION FOR PERMIT TO DRILL, DEEPEN, OR PLUG BACK

1a. TYPE OF WORK

DRILL ☒MAY 9 1977
DEEPEN ☒PLUG BACK ☐

b. TYPE OF WELL

OIL
WELL ☒GAS
WELL ☐

OTHER

D.C.C.

SINGLE
ZONE ☒MULTIPLE
ZONE ☐

2. NAME OF OPERATOR

ARTESIA, OFFICE

Yates Petroleum Corporation

3. ADDRESS OF OPERATOR

207 South Fourth Street, Artesia, NM 88210

4. LOCATION OF WELL (Report location clearly and in accordance with any State requirements.)*

At surface

330' FNL & 2310' FWL of Sec. 6-7S-26E

At proposed prod. zone

14. DISTANCE IN MILES AND DIRECTION FROM NEAREST TOWN OR POST OFFICE*

29 miles NE of Roswell, NM.

10. DISTANCE FROM PROPOSED*

LOCATION TO NEAREST
PROPERTY OR LEASE LINE, FT.
(Also to nearest drlg. unit line, if any)

18. DISTANCE FROM PROPOSED LOCATION*

TO NEAREST WELL, DRILLING, COMPLETED,
OR APPLIED FOR, ON THIS LEASE, FT.

16. NO. OF ACRES IN LEASE

19. PROPOSED DEPTH

1200'

21. ELEVATIONS (Show whether DF, RT, GR, etc.)

3682' GR

23.

PROPOSED CASING AND CEMENTING PROGRAM

SIZE OF HOLE	SIZE OF CASING	WEIGHT PER FOOT	SETTING DEPTH	QUANTITY OF CEMENT
12 1/2"	8-5/8" New	24# J-55	Approx. 250'	150 sacks - Circulate
7-7/8"	5 1/2" New	15.5# J-55	Approx. 1200'	175 sacks - Circulate

Propose to drill a San Andres test well. Approximately 250' of surface casing will be run & cemented to the surface. Production casing will be cemented to the surface, perforated and stimulated as needed for production.

MUD PROGRAM: F. W. Gel & LCM from surface to TD.

BOP PROGRAM: Flow control head or pipe rams.

RECEIVED

APR 27 1977

U.S. GEOLOGICAL SURVEY
ARTESIA, NEW MEXICO

IN ABOVE SPACE DESCRIBE PROPOSED PROGRAM: If proposal is to deepen or plug back, give data on present productive zone and proposed new productive zone. If proposal is to drill or deepen directionally, give pertinent data on subsurface locations and measured and true vertical depths. Give blowout preventer program, if any.

24.

SIGNED

Eddie L. Halpern

TITLE

Engineer

DATE

4-27-77

(This space for Federal or State office use)

PERMIT NO.

APPROVAL DATE

APPROVED BY

CONDITIONS OF APPROVAL, IF ANY:

THIS APPROVAL IS RESCINDED IF OPERATIONS
ARE NOT COMMENCED WITHIN 3 MONTHS.
EXPIRES AUG - 6 1977

*See Instructions On Reverse Side

NEW MEXICO OIL CONSERVATION COMMISSION
WELL LOCATION AND ACREAGE DEDICATION PLAT

Form C-102
Supersedes C-128
Effective 1-1-65

All distances must be from the outer boundaries of the Section.

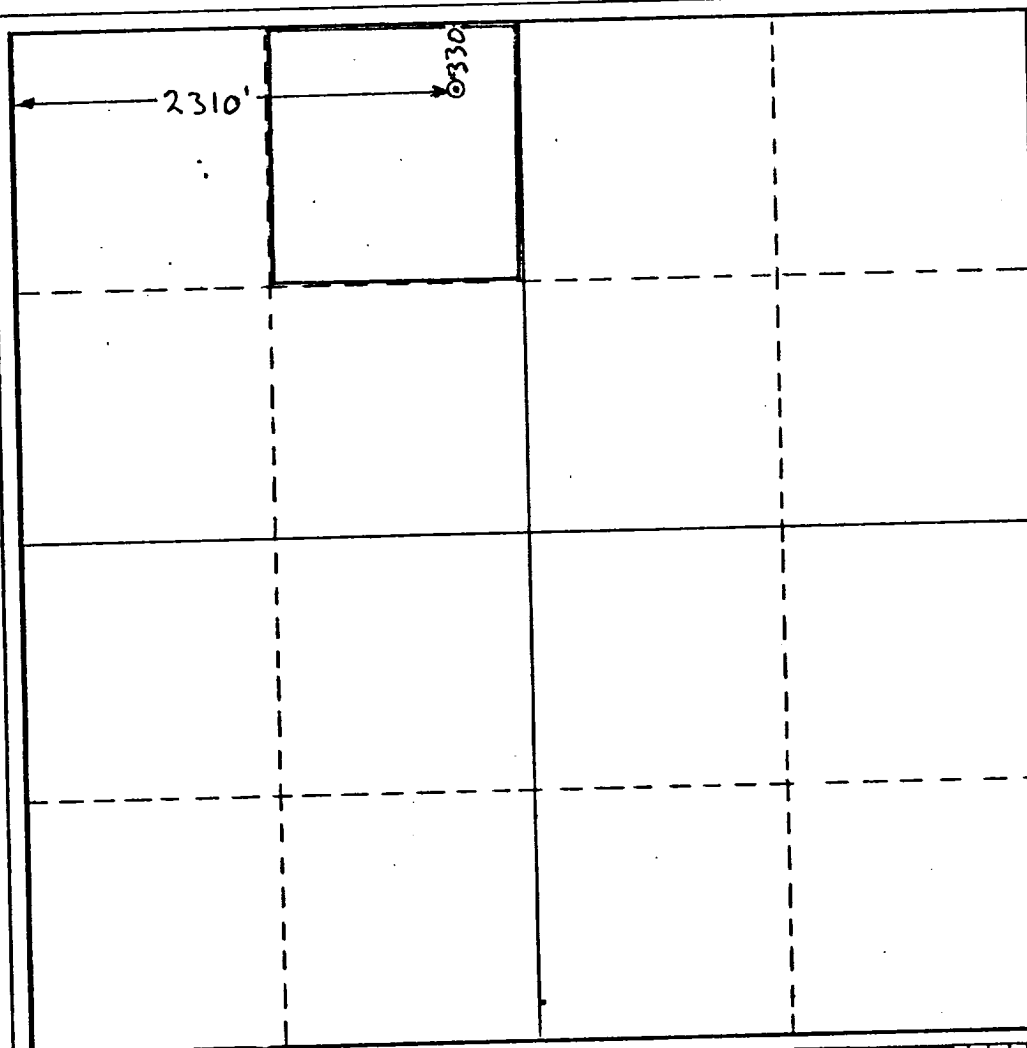
Operator Yates Petroleum Corp		Lease Sorenson "1B" Federal		Well No. 1	
Unit Letter C	Section 6	Township 7-S	Range 26-E	County Chaves	
Actual Footage Location of Well: 330 feet from the North line and 2310 feet from the West line					
Ground Level Elev. 3682	Producing Formation San Andres		Pool Linda S.A.		Dedicated Acreage: 40 Acres

1. Outline the acreage dedicated to the subject well by colored pencil or hachure marks on the plat below.
2. If more than one lease is dedicated to the well, outline each and identify the ownership thereof (but as to working interest and royalty).
3. If more than one lease of different ownership is dedicated to the well, have the interests of all owners been consolidated by communitization, unitization, force-pooling, etc?

☐ Yes ☐ No If answer is "yes," type of consolidation _____

If answer is "no," list the owners and tract descriptions which have actually been consolidated. (Use reverse side of this form if necessary.) _____

No allowable will be assigned to the well until all interests have been consolidated (by communitization, unitization, forced-pooling, or otherwise) or until a non-standard unit, eliminating such interests, has been approved by the Commission.



CERTIFICATION

I hereby certify that the information contained herein is true and complete to the best of my knowledge and belief.

Name
Eddie M. Mahfood

Position
Engineer

Company
Yates Petroleum Corp

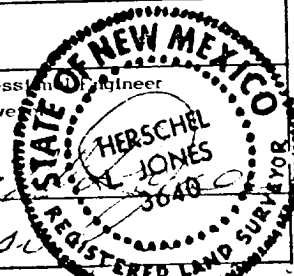
Date
4-26-77

I hereby certify that the well location shown on this plat was plotted from field notes of actual surveys made by me or under my supervision, and that the same is true and correct to the best of my knowledge and belief.

Date Surveyed

Registered Professional Engineer and/or Land Surveyor

Certificate No.



3640

0 330 660 990 1320 1650 1980 2310 2640 2000 1500 1000 500 0

YPC - Federal "IB" No. 1, 330/N 2310/W Sec 6-7S-26E, Chavez Co.

Other information to accompany form 9-331-C:

1. Surface formation: Quaternary Alluvium on Seven Rivers
2. Geologic Markers Anticipated: San Andres @ 502' GR.
3. Surface Water: Approx 60-120 ft.
Oil & Gas: Approx 970-1200 ft.
4. Casing Program: Approx. 250' 8 $\frac{1}{2}$ " 24" J-55 New;
Approx: 1200' 5 $\frac{1}{2}$ " 15.5" J-55 New.
5. Pressure Control: Flow control head or pipe rams.
6. Mud Program: Fresh water gel w/ LCM, m.w. 8.6 ppg, uncontrolled W.L.
7. Auxiliary Equipment: Sub with full-opening valve for drill pipe.
8. No testing or coring. Samples every 10ft from csg-pt to TD.
9. No abnormal pressures or temperatures anticipated; H₂S and other toxic gases are minimal or non-existent; hole will be loaded at all times with mud or water.
10. Anticipated starting date: Soon as approved; rig available 5-7-77.

Jim M.
4-26-77

YATES PETROLEUM CORPORATION - FEDERAL "B" NO. 1
330' FNL & 2310' FWL, Section 6-7S-26E, Chaves County, New Mexico

Surface Use Plan to Accompany "Applications to Drill, Federal Lease".

1. EXISTING ROADS: See Plat (Exhibit A) Go 69 miles north from Artesia (or 29 miles north from Roswell) on U.S. 285, then east on Cottonwood Ranch Road for 13.5 miles, then southeast for 1.5 miles to access road. This road is bladed only and county maintained, no gates or turnouts required.
2. PLANNED ACCESS ROADS: See Plat (Exhibit B) Approximately 50' of new road, 12' wide, will be bladed and watered as needed. There will be no fences to cut; no culverts or turnouts required.
3. LOCATION OF EXISTING WELLS: See Plat (Exhibit B) This test well will be a development well in the Linda San Andres field and is approximately 1 mile from producing oil wells. There are several windmills in area, the closest being approximately $\frac{1}{4}$ mile southeast of location.
4. LOCATION OF TANK BATTERIES, PRODUCTION FACILITIES, AND PRODUCTION, GATHERING AND SERVICE LINES: See Plat (Exhibits B & C) The tank battery will be located on south end of pad with adequate loading and turnaround for transport; above-ground steel flowline; fenced battery with berm; fenced unlined burn pit as provided for under NTL-2B.
5. LOCATION AND TYPE OF WATER SUPPLY: Fresh water supply for drilling to be hauled to location from any available commercial source.
6. SOURCE OF CONSTRUCTION MATERIAL: None needed.
7. METHODS FOR HANDLING WASTE DISPOSAL: Well cuttings will be disposed of in mud pit. Barrel containers will be located on drill site for trash. Waste will be hauled away periodically or burned. Treating water will be accumulated in one storage tank and hauled away periodically.
8. ANCILLARY FACILITIES: None.
9. WELL SITE LAYOUT: (rig, tanks, pits, racks, etc.) See Sketch (Exhibit C) (a) Mat size - 100' X 60', no caliche needed.
(b) No cut and fill; location is fairly level.
(c) Pit area will be 50' X 30', unlined.
(d) Surface will be bladed & watered as needed.
(e) Pad and burn pit are flagged.
(f) 3-phase 220-440v. lines run N-S approximately $\frac{1}{4}$ mile east of location.
10. PLANS FOR RESTORATION OF SURFACE: If productive, mud pit will be fenced and used as burn pit. Location will be cleaned and all surplus material removed. Upon abandonment, all pits will be filled and leveled. Location will be cleaned, and surface restored to near original or in compliance with BLM stipulations.
11. OTHER INFORMATION: (a) Land surface is flat with very gentle slope to the east, horseshoe ridge to west, south and east at distance ranging 0.2 to 0.4 mile.
(b) Soil is sandy loam overlaid with red beds.
(c) Vegetative cover is prairie grass & filaree, scattered mesquite.
(d) Location is approximately 1 mile west of Rio Pecos.
(e) Nearest occupied dwelling is ranch house approximately $\frac{1}{4}$ mile SE.
(f) Land use is cattle grazing.
(g) Surface is BLM with grazing lease issued to Joseph C. Kranz of Houston, TX.
12. LESSEE'S OR OPERATOR'S REPRESENTATIVES: Eddie Mahfood or Leon Bergstrom or Jim Jonas, 207 South Fourth Street, Artesia, NM. Phone: 746-3558.
13. CERTIFICATION:

I hereby certify that I, or persons under my direct supervision, have inspected the proposed drillsite and access route; that I am familiar with the conditions which presently exist; that the statements made in this plan are, to the best of my knowledge, true and correct; and, that the work associated with the operations proposed herein will be performed by Yates Petroleum Corporation and its contractors and sub-contractors in conformity with this plan and the terms and conditions under which it is approved.

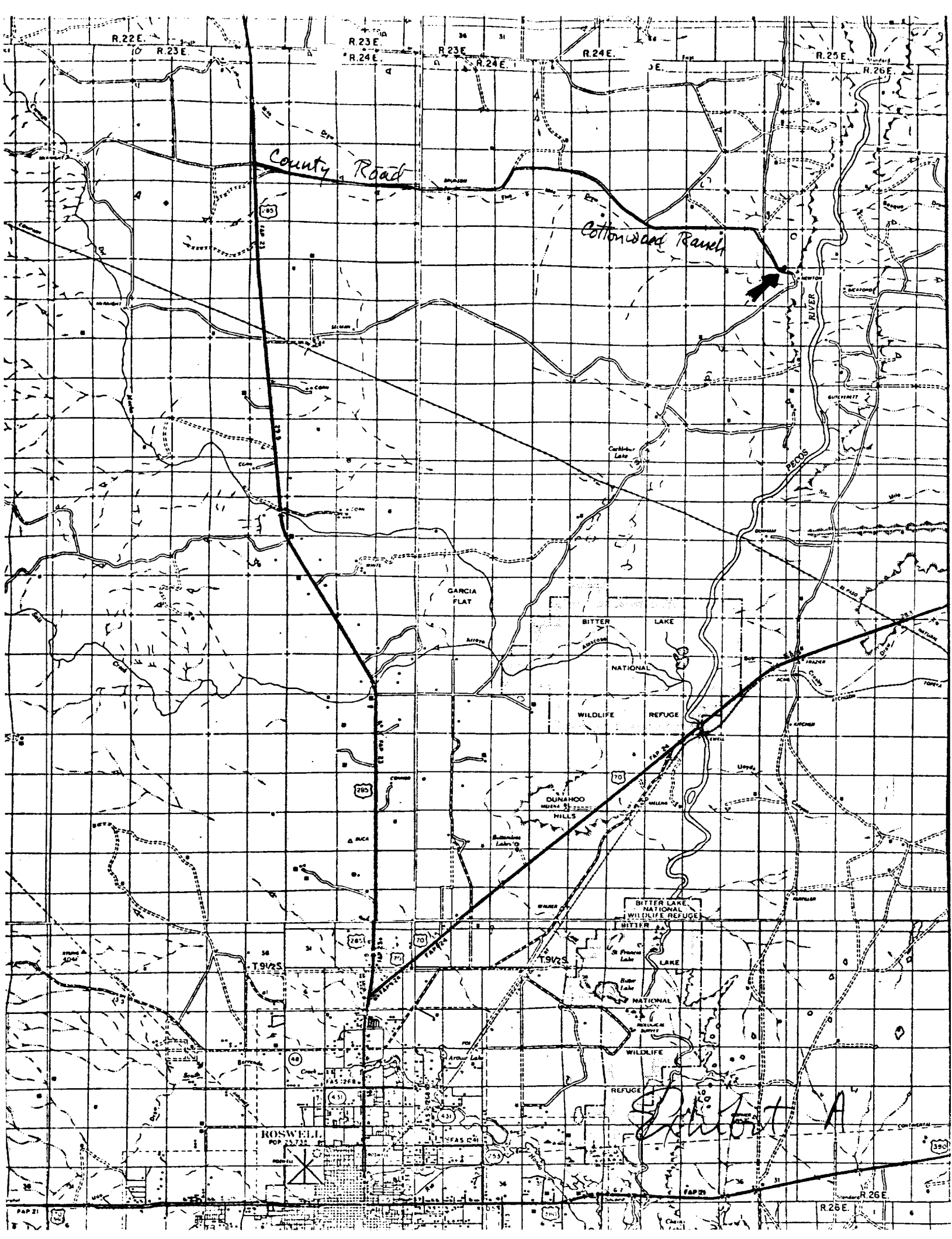
April 26, 1977
Date

Eddie M. Mahfood, Engineer
Name and Title

RECEIVED

APR 27 1977

U.S. GEOLOGICAL SURVEY
ARTESIA, NEW MEXICO



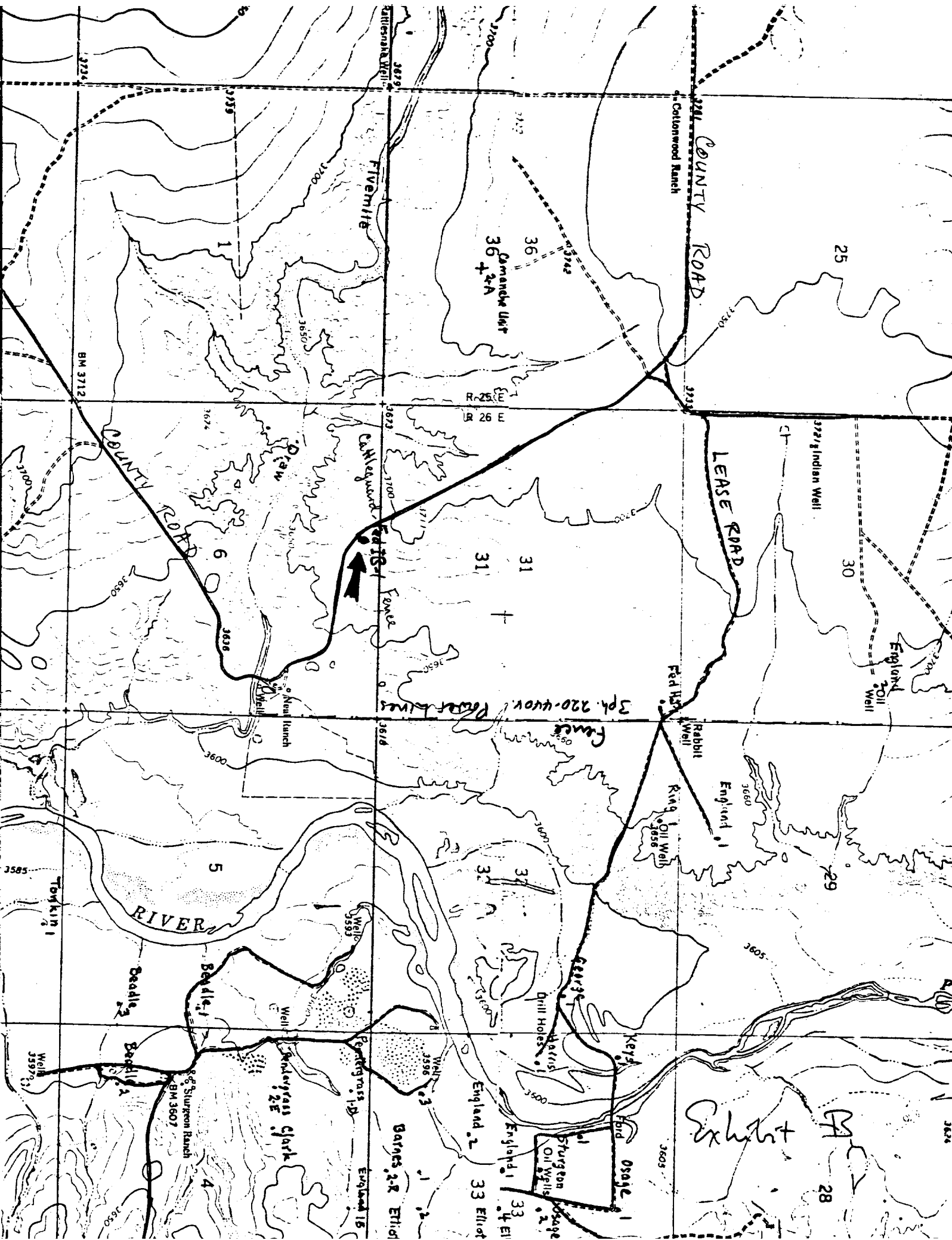


Exhibit
28

YPC - Sorenson "1B" Federal 110.1, 330/W 2310/W Sec 6-7-26E

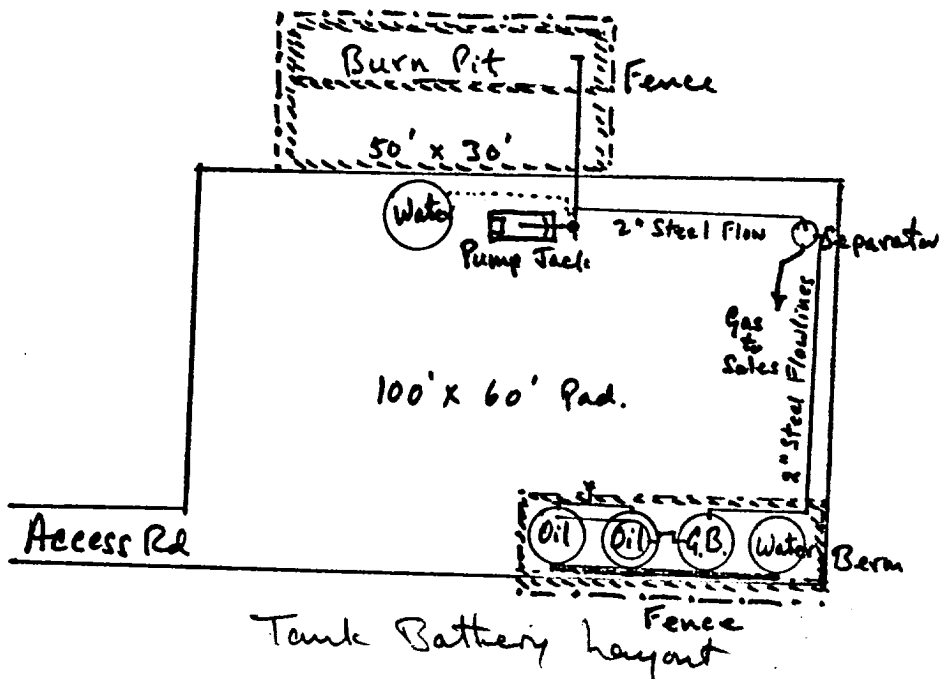
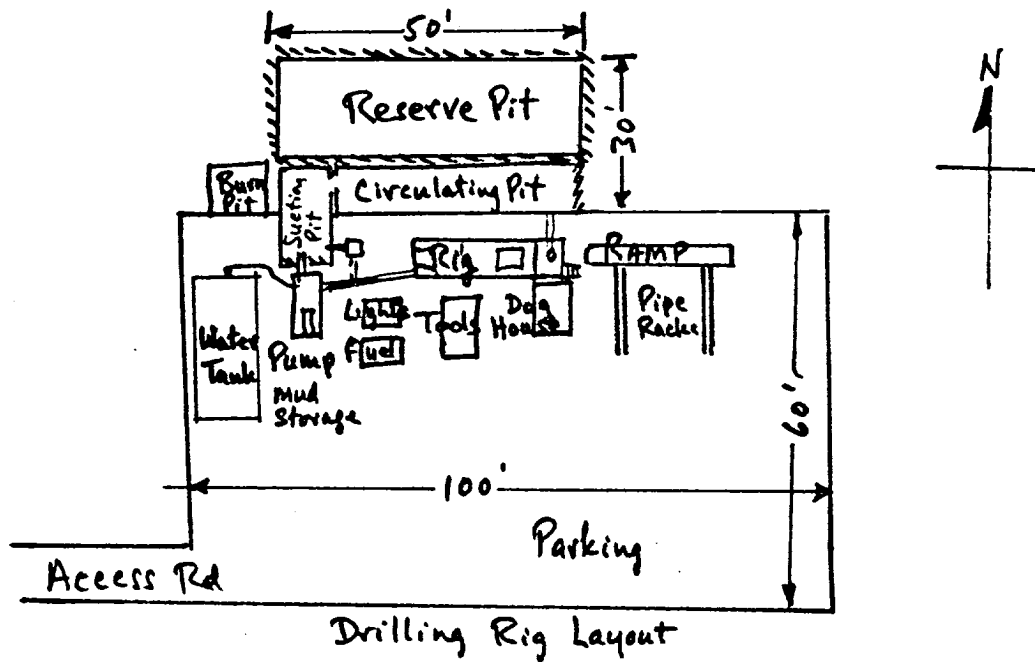


Exhibit "C"