

UNITED STATES  
DEPARTMENT OF THE INTERIOR  
GEOLOGICAL SURVEY30-005-60430  
5. LEASE DESIGNATION AND SERIAL NO.

NM 2349

6. IF INDIAN, ALLOTTEE OR TRIBE NAME

7. UNIT AGREEMENT NAME

8. FARM OR LEASE NAME

Federal "ID"

9. WELL NO.

1

10. FIELD AND POOL, OR WILDCAT

Undesignated 5A  
Linda San Andres11. SEC., T., R., M., OR BLK.  
AND SURVEY OR AREA

Sec. 1-7S-25E,

Unit H, NMPM

12. COUNTY OR PARISH 13. STATE

Chaves

NM

## 1a. TYPE OF WORK

DRILL ☒DEEPEN ☐PLUG BACK ☐

## b. TYPE OF WELL

OIL  
WELL ☒GAS  
WELL ☐

OTHER

SINGLE  
ZONE ☒MULTIPLE  
ZONE ☐

## 2. NAME OF OPERATOR

Yates Petroleum Corporation

## 3. ADDRESS OF OPERATOR

207 South Fourth Street, Artesia, NM 88210

## 4. LOCATION OF WELL (Report location clearly and in accordance with any State requirements.)

At surface

2310' FNL &amp; 990' FEL of Sec. 1-7S-25E

At proposed prod. zone

MAY 25 1977

## 14. DISTANCE IN MILES AND DIRECTION FROM NEAREST TOWN OR POST OFFICE\*

28 miles NE of Roswell, NM

C.C.C.  
ARTESIA, OFFICE

## 15. DISTANCE FROM PROPOSED\*

LOCATION TO NEAREST  
PROPERTY OR LEASE LINE, FT.  
(Also to nearest drlg. unit line, if any)

## 16. NO. OF ACRES IN LEASE

17. NO. OF ACRES ASSIGNED  
TO THIS WELL

40

18. DISTANCE FROM PROPOSED LOCATION\*  
TO NEAREST WELL, DRILLING, COMPLETED,  
OR APPLIED FOR, ON THIS LEASE, FT.

## 19. PROPOSED DEPTH

1200'

## 20. ROTARY OR CABLE TOOLS

Cable Tools or Rotary

## 21. ELEVATIONS (Show whether DF, RT, GR, etc.)

3678' GR

## 22. APPROX. DATE WORK WILL START\*

As soon as approved

## 23.

## PROPOSED CASING AND CEMENTING PROGRAM

SIZE OF HOLE	SIZE OF CASING	WEIGHT PER FOOT	SETTING DEPTH	QUANTITY OF CEMENT
12 1/4"	8-5/8" New	20# X-42	Approx. 250'	150 sacks - Circulate
7-7/8"	5 1/2" New	15.5# J-55	Approx. 1200'	175 sacks - Circulate

Propose to drill a San Andres test well. Approximately 250' of surface casing will be run and cemented to the surface. Production casing will be cemented to the surface, well perforated and stimulated as needed for production.

RECEIVED

MUD PROGRAM: F. W. Gel &amp; LCM from surface to TD.

MAY 02 1977

BOP PROGRAM: Flow control head or pipe rams.

U.S. GEOLOGICAL SURVEY  
ARTESIA, NEW MEXICO

IN ABOVE SPACE DESCRIBE PROPOSED PROGRAM: If proposal is to deepen or plug back, give data on present productive zone and proposed new productive zone. If proposal is to drill or deepen directionally, give pertinent data on subsurface locations and measured and true vertical depths. Give blowout preventer program, if any.

## 24.

SIGNED

*Eddie M. Halyard*

TITLE

Engineer

DATE

4-29-77

(This space for Federal or State office use)

PERMIT NO.

APPROVAL DATE

APPROVED BY  
CONDITIONS OF APPROVAL, IF ANY:

TITLE

3 MONTHS.

DATE

APPROVED  
Verbally 5-12-77  
MAY 24 1977  
A. L. B. [Signature]  
DISTRICT ENGINEERTHIS AND  
ARE NOT COMMENCED WITHIN  
EXPIRES AUG 24 1977

\*See Instructions On Reverse Side

NEW MEXICO OIL CONSERVATION COMMISSION  
WELL LOCATION AND ACREAGE DEDICATION AT

Form C-102  
Supersedes C-128  
Effective 1-1-65

All distances must be from the outer boundaries of the Section.

Operator <b>YATES PETROLEUM CORPORATION</b>			Lease <b>Federal "ID"</b>		Well No. <b>1</b>
Unit Letter <b>E</b>	Section <b>1</b>	Township <b>7 South</b>	Range <b>25 East</b>	County <b>Chaves</b>	
Actual Footage Location of Well: <b>2310</b> feet from the <b>North</b> line and <b>990</b> feet from the <b>East</b> line					
Ground Level Elev. <b>3678.0</b>	Producing Formation <b>San Andres</b>		Pool <b>Undesignated</b>		Dedicated Acreage: <b>40</b> Acres

1. Outline the acreage dedicated to the subject well by colored pencil or hachure marks on the plat below.
2. If more than one lease is dedicated to the well, outline each and identify the ownership thereof (both as to working interest and royalty).
3. If more than one lease of different ownership is dedicated to the well, have the interests of all owners been consolidated by communitization, unitization, force-pooling, etc?

☐ Yes ☐ No If answer is "yes," type of consolidation \_\_\_\_\_

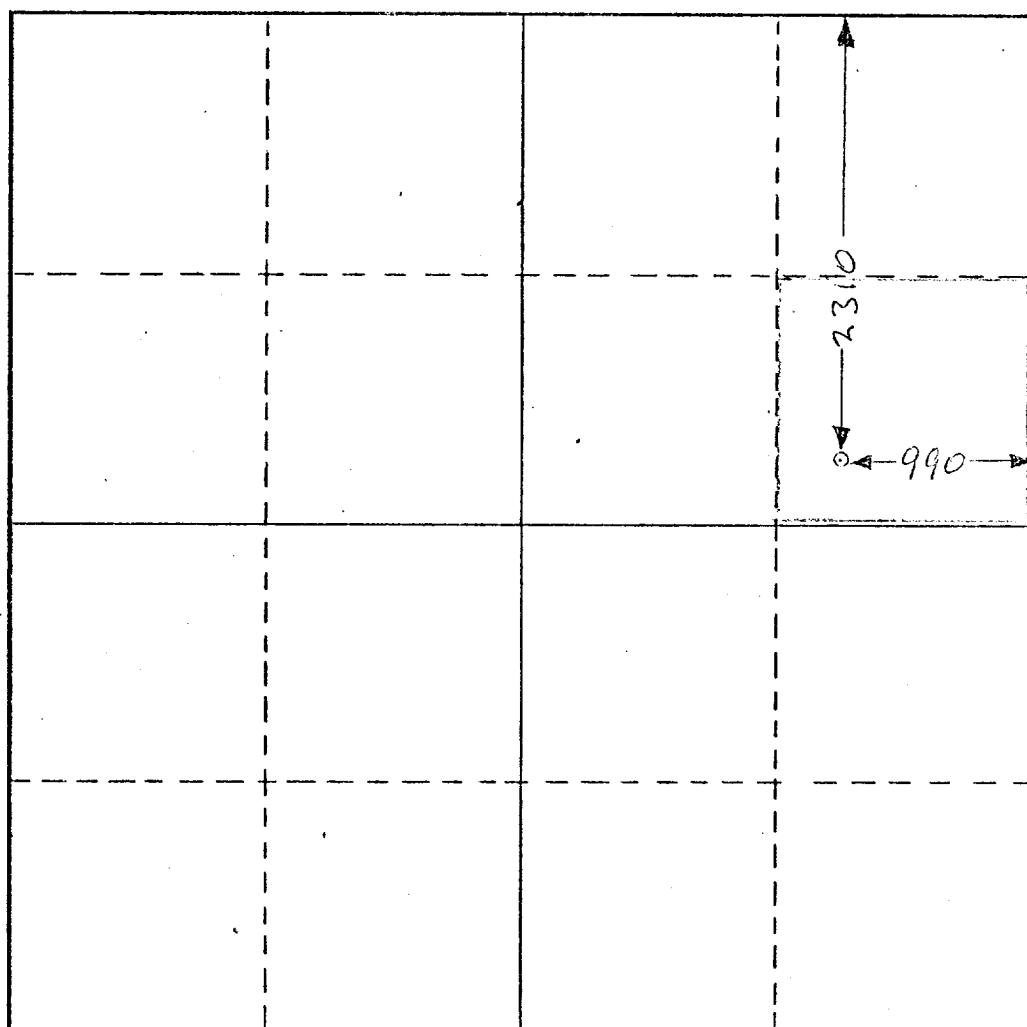
If answer is "no," list the owners and tract descriptions which have actually been consolidated. (Use reverse side of this form if necessary.) \_\_\_\_\_

No allowable will be assigned to the well until all interests have been consolidated (by communitization, unitization, forced-pooling, or otherwise) or until a non-standard unit, eliminating such interests, has been approved by the Commission.

**RECEIVED**

**MAY 02 1977**

**U.S. GEOLOGICAL SURVEY  
ARTESIA, NEW MEXICO**



**CERTIFICATION**

I hereby certify that the information contained herein is true and complete to the best of my knowledge and belief.

*Eddie M. Mahfood*

Name

**Eddie M. Mahfood**

Position

**Engineer**

Company

**Yates Petroleum Corp.**

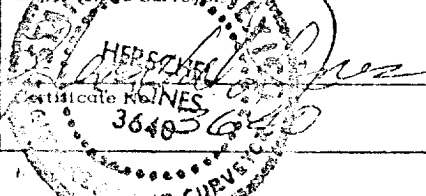
Date

**April 29, 1977**

I hereby certify that the well location shown on this plat was plotted from field notes of actual surveys made by me or under my supervision, and that the same is true and correct to the best of my knowledge and belief.

Date Surveyed

Registered Professional Engineer  
and State Surveyor



0 330 660 990 1320 1650 1980 2310 2640 2000 1500 1000 500 0

YPC - Federal "ID" No. 1, 2310/N 990/E, Sec. 1-7s-2SE, Chaves Co.

Other information to accompany Form 9-531-C:

1. Surface Formation: Quaternary Alluvium or Seven Rivers
2. Geologic Markers Anticipated: San Andres @ 410' GR.
3. Surface Water: Approx 60-120 ft.  
Oil & Gas : Approx 880-1150 ft
4. Casing Program: Approx. 250' 8 $\frac{1}{2}$ " 24" J-55 New;  
Approx: 1200' 5 $\frac{1}{2}$ " 15.5" J-55 New.
5. Pressure Control: Flow control head or pipe rams.
6. Mud Program: Fresh water gel w/ LCM, m.w. 8.6 ppg, uncontrolled w.L.
7. Auxiliary Equipment: Sub with full-opening valve for drill pipe.
8. No testing or coring. Samples every 10ft from csg-pt to TD.
9. No abnormal pressures or temperatures anticipated; H<sub>2</sub>S and other toxic gases are minimal or non-existent; hole will be loaded at all times with mud or water.
10. Anticipated starting date: Soon as approved; rig available 5-7-77.

Em. M.  
4-26-77

Surface Use Plan to Accompany "Applications to Drill, Federal Lease".

1. EXISTING ROADS: (See Exhibits A & B) Go 53 miles north from Artesia, or 13 miles north from Roswell on U.S. 285 (transformer station on left), go 2.5 mi E on Red Bluff Ranch county road then northeast for another 12.5 miles, then north on ranch road along east side of fence for 1.7 miles to E-W fence and access road.
2. PLANNED ACCESS ROAD: (See Exhibits A & B) Approximately 0.85 miles new road of which first 0.5 mile east of existing ranch road will be on south side of fence, then go through gate and east for 1/4 mile along north side of fence and northeast to location. Road will be 12' wide, bladed and watered, no culverts, two or three turnouts; will install one cattleguard in gate.
3. LOCATION OF EXISTING WELLS: (See Exhibit B) This test well will be 1.7 miles from nearest producer in the Linda San Andres field, 0.8 mile south of a dry hole & 3/4 mile southwest of the proposed Sorenson "IB" Federal in Unit C, Sec. 6-7S-26E. There are several windmills or water wells within 2 mile radius.
4. LOCATION OF TANK BATTERIES, PRODUCTION FACILITIES, AND PRODUCTION, GATHERING AND SERVICE LINES: (See Exhibits B & C) The tank battery will be located on west end of pad with loading and turnaround on the pad; above-ground steel flowline; fenced battery with berm; fenced unlined burn pit as provided for under NTL-2B. Tank battery area, add 50' to west end of drill pad.
5. LOCATION AND TYPE OF WATER SUPPLY: Fresh water supply for drilling to be hauled to location from any available commercial source.
6. SOURCE OF CONSTRUCTION MATERIAL: (See Exhibit C) None needed.
7. METHODS FOR HANDLING WASTE DISPOSAL: Well cuttings will be disposed of in mud pit. Barrel containers will be located on drill site for trash. Waste will be hauled away periodically or burned. Treating water will be accumulated in one storage tank and hauled away periodically.
8. ANCILLARY FACILITIES: None.
9. WELL SITE LAYOUT: (rig, tanks, pits, racks, etc.) (See Exhibit C) (a) Mat size - 100' X 60', no caliche needed.  
(b) 1-2 feet cut and fill from west to east side of pad.  
(c) Pit area will be 50' X 30', unlined.  
(d) Surface will be bladed & watered as needed.  
(e) Pad and burn pit are flagged.  
(f) 3-phase 220-440v. lines run N-S approximately 1/4 mile southeast of location.
10. PLANS FOR RESTORATION OF SURFACE: If productive, mud pit will be fenced and used as burn pit. Location will be cleaned and all surplus material removed. Upon abandonment, all pits will be filled and leveled. Location will be cleaned, and surface restored to near original or in compliance with BLM stipulations.
11. OTHER INFORMATION: (a) Land surface is a shaley gravel and gypsum ridge with gradual slope to the east, Five Mile Draw to the north, south and east.  
(b) Soil is thin sandy loam.  
(c) Vegetative cover is prairie grass & filaree, cacti, scattered mesquite & cocklebur.  
(d) Location is approximately 1 1/4 miles west of Rio Pecos.  
(e) Nearest occupied dwelling is ranch house approximately 1 mile to the east.  
(f) Land use - presently vacant but could be used for grazing.  
(g) Surface is BLM. Grazing allotment to Joe C. Kranz of Houston, TX.
12. LESSEE'S OR OPERATOR'S REPRESENTATIVE: Eddie Mahfood or Jim Jonas, 207 South Fourth Street, Artesia, NM 88210. PHONE: 746-3558.
13. CERTIFICATION:

I hereby certify that I, or persons under my direct supervision, have inspected the proposed drillsite and access route; that I am familiar with the conditions which presently exist; that the statements made in this plan are, to the best of my knowledge true and correct; and, that the work associated with the operations proposed herein will be performed by Yates Petroleum Corporation and its contractors and subcontractors in conformity with this plan and the terms and conditions under which it is approved.

RECEIVED

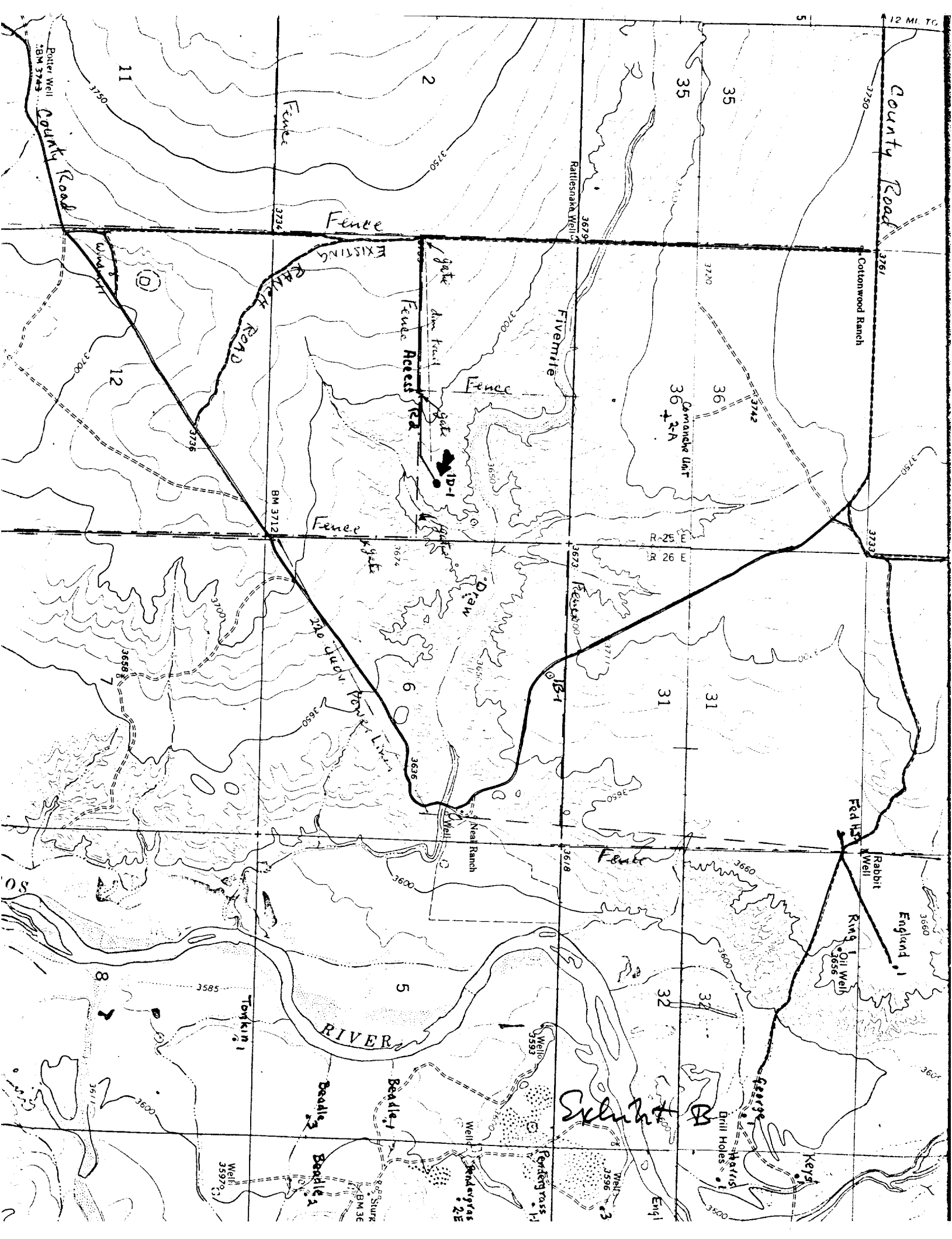
MAY 02 1977

U.S. GEOLOGICAL SURVEY  
ARTESIA, NEW MEXICO

4-29-77

Eddie M. Mahfood, Engineer





YPC- Federal ID #1, 2310/N 990/E, Sec 1-7S-25E, Chaves Co.

