

UNITED STATES
DEPARTMENT OF THE INTERIOR
GEOLOGICAL SURVEY

30-005-60444

APPLICATION FOR PERMIT TO DRILL, DEEPEN, OR PLUG BACK

1a. TYPE OF WORK

DRILL ☒DEEPEN ☐PLUG BACK ☐

b. TYPE OF WELL

OIL
WELL ☒GAS
WELL ☐

OTHER

SINGLE
ZONE ☒MULTIPLE
ZONE ☐

2. NAME OF OPERATOR

Penroc Oil Corporation

3. ADDRESS OF OPERATOR

P. O. Drawer 831, Midland, Texas 79702

4. LOCATION OF WELL (Report location clearly and in accordance with any State requirements.)*

At surface

(1) 330' FSL, 330' FWL

At proposed prod. zone

14. DISTANCE IN MILES AND DIRECTION FROM NEAREST TOWN OR POST OFFICE*

Approximately 26 miles northeast of Roswell, N. M.

15. DISTANCE FROM PROPOSED*

LOCATION TO NEAREST

PROPERTY OR LEASE LINE, FT.

(Also to nearest drlg. line, if any)

330'

18. DISTANCE FROM PROPOSED LOCATION*

TO NEAREST WELL, DRILLING, COMPLETED,
OR APPLIED FOR, ON THIS LEASE, FT.

--

16. NO. OF ACRES IN LEASE

120

19. PROPOSED DEPTH

(5) 1100'

17. NO. OF ACRES ASSIGNED

TO THIS WELL

40

20. ROTARY OR CABLE TOOLS

(4) Rotary

21. ELEVATIONS (Show whether DF, RT, GR, etc.)

(2) 3661.4' GR

22. APPROX. DATE WORK WILL START*

September 10, 1977

23.

(8) PROPOSED CASING AND CEMENTING PROGRAM

SIZE OF HOLE	SIZE OF CASING	WEIGHT PER FOOT	(9) SETTING DEPTH	QUANTITY OF CEMENT
8 1/2"	7"	23# K-55	250'	Circulate
6 1/4"	4 1/2"	10.50# K-55	1100'	100 sxs.

(All casing new)

(See attachment item 9 for
types of cement)

(3) Geologic name of surface formation - Permian Guadalupian

Blowout Preventer: Shaffer 8" Serieo 900 Double Manuel.

IN ABOVE SPACE DESCRIBE PROPOSED PROGRAM: If proposal is to deepen or plug back, give data on present productive zone and proposed new productive zone. If proposal is to drill or deepen directionally, give pertinent data on subsurface locations and measured and true vertical depths. Give blowout preventer program, if any.

24.

SIGNED

E. J. Dickey

TITLE

President

DATE 8/3/77

(This space for Federal or State office use)

PERMIT NO.

APPROVAL DATE

APPROVED

CONDITIONS OF APPROVAL, IF ANY:

AUG 26 1977

H. L. BUEKMAN
ACTING DISTRICT ENGINEER

TITLE

DATE

THIS APPROVAL IS RESCINDED IF OPERATIONS
ARE NOT COMMENCED WITHIN 3 MONTHS.
EXPIRES NOV 26 1977
See Instructions On Reverse Side

NEW MEXICO OIL CONSERVATION COMMISSION
WELL LOCATION AND ACREAGE DEDICATION PLAT

Form O-117
Supersedes C-128
Effective 1-1-65

All distances must be from the outer boundaries of the Section

Operator PENROC OIL CORP.		Lessee ELLIOT FEDERAL		Acres 1
Section M	Section 29	Township 6 South	Range 26 East	County Chaves
Acreage Dedication to Well:				
330		feet from the South	330	feet to the West
Ground Level Elev 3661.4	Producing Formation San Andres		Linda San Andres 40	

1. Outline the acreage dedicated to the subject well by colored pencil or hatchure marks on the plat below.
2. If more than one lease is dedicated to the well, outline each and identify the ownership thereof (both as to working interest and royalty).
3. If more than one lease of different ownership is dedicated to the well, have the interests of all owners been consolidated by communitization, unitization, force-pooling, etc?

☐ Yes ☐ No If answer is "yes," type of consolidation _____

If answer is "no," list the owners and tract descriptions which have actually been consolidated (Use reverse side of this form if necessary.) _____

No allowable will be assigned to the well until all interests have been consolidated (by communitization, unitization, forced-pooling, or otherwise) or until a non-standard unit, eliminating such interests, has been approved by the Commission.

RECEIVED

AUG 8 1977

U.S. GEOLOGICAL SURVEY

ARTESIA, NEW MEXICO

29

PENROC

LC-068127

FED.

CERTIFICATION

I hereby certify that the information contained herein is true and complete to the best of my knowledge and belief.

B. J. Dally
President

Penroc Oil Corporation

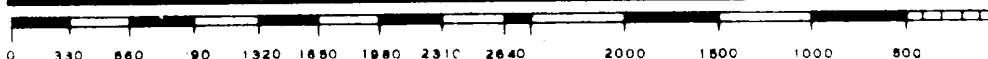
August 3, 1977

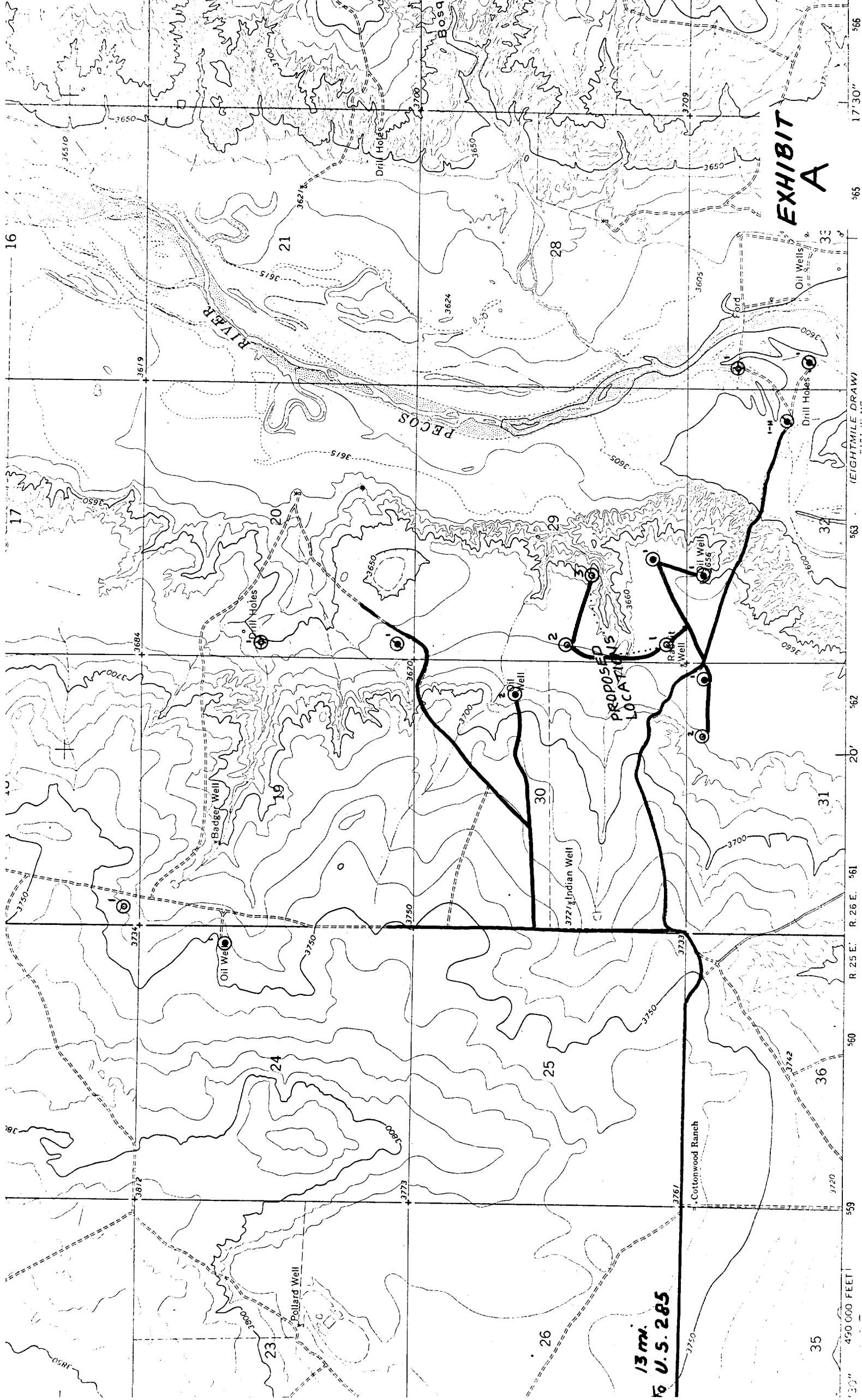
I hereby certify that the well location shown on this plat was plotted from field notes of actual surveys made by me or under my supervision, and that the same is true and correct to the best of my knowledge and belief.

Date Surveyed
July 27, 1977

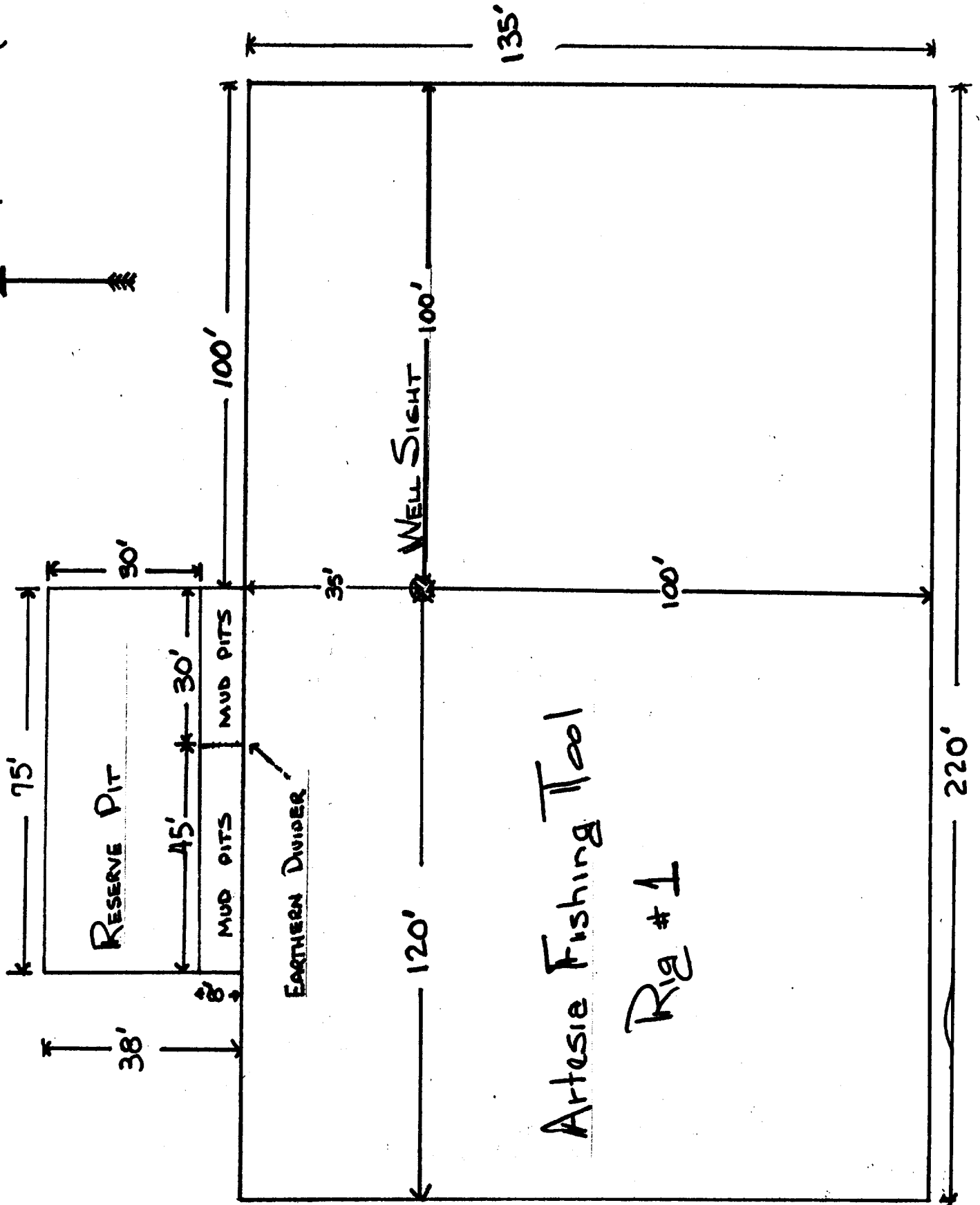
Registered Professional Engineer
in the State of New Mexico

John W. West
Certificate No. **676**





1 CM = 10 ft.
N



Artesia Fishing Tool
Rig #1

EXHIBIT
C