

OCC COPY  
UNITED STATES  
DEPARTMENT OF THE INTERIOR  
GEOLOGICAL SURVEYSUBMIT IN TRIPLICATE  
(Other instructions on reverse side)Form approved.  
Budget Bureau No. 42-R1425.Copy to 57  
30-005-60500

## APPLICATION FOR PERMIT TO DRILL, DEEPEN, OR PLUG BACK

## 1a. TYPE OF WORK

DRILL ☒DEEPEN ☐PLUG BACK ☐

## b. TYPE OF WELL

OIL  
WELL ☒GAS  
WELL ☐OTHER ☐SINGLE  
ZONE ☐MULTIPLE  
ZONE ☐

## 2. NAME OF OPERATOR

Supron Energy Corporation ✓

## 3. ADDRESS OF OPERATOR

1700 Campbell Centre

8350 North Central Expressway, Dallas, TX 75206

## 4. LOCATION OF WELL (Report location clearly and in accordance with any State requirements.)\*

At surface

NW/4 SW/4 1980' FSL &amp; 990' FWL

At proposed prod. zone

same as above

## 14. DISTANCE IN MILES AND DIRECTION FROM NEAREST TOWN OR POST OFFICE\*

12 miles East of Roswell

APR 17 1978

## 15. DISTANCE FROM PROPOSED\*

LOCATION TO NEAREST

PROPERTY OR LEASE LINE, FT.

(Also to nearest drlg. unit line, if any)

990'

## 16. NO. OF ACRES IN LEASE

400 ANTEBIA, OFFICE

## 17. NO. OF ACRES ASSIGNED TO THIS WELL

40

## 18. DISTANCE FROM PROPOSED LOCATION\*

TO NEAREST WELL, DRILLING, COMPLETED, OR APPLIED FOR, ON THIS LEASE, FT.

None

## 19. PROPOSED DEPTH

6600'

## 20. ROTARY OR CABLE TOOLS

Rotary

## 21. ELEVATIONS (Show whether DF, RT, GR, etc.)

3635.7' Gr

## 22. APPROX. DATE WORK WILL START\*

February 15, 1978

## 23.

## PROPOSED CASING AND CEMENTING PROGRAM

SIZE OF HOLE	SIZE OF CASING	WEIGHT PER FOOT	SETTING DEPTH	QUANTITY OF CEMENT
17½"	13 3/8"	48#	300'	320 sxs
11"	8 5/8"	24#	1500'	635 sxs
7 7/8"	4 1/2"	10.50#	Total Depth	230 sxs

Supron Energy Corporation proposes to drill &amp; complete this well as follows:

1. Drill 17½" hole to 300'. Set 13 3/8" surface casing & cement to surface.
2. Drill 11" hole to 1500'. Run 8 5/8" intermediate casing & cement as required.
3. Drill 7 7/8" hole to TD. ± 6600'. Run electric logs. If warranted, run 4½" production casing.
4. Stimulate and treat potential producing formations in order to establish commercial production.

RECEIVED

FEB 3 1978

IN ABOVE SPACE DESCRIBE PROPOSED PROGRAM: If proposal is to deepen or plug back, give data on present productive zone and proposed new productive zone. If proposal is to drill or deepen directionally, give pertinent data on subsurface locations and measurements. Give blowout prevention program, if any.

## 24.

SIGNED

Dan R. Collier

TITLE Operations Assistant

DATE 1/31/78

(This space for Federal or State office use)

PERMIT NO.

APPROVAL DATE

APR 14 1978

APPROVED BY

Joe D. Lara

TITLE ACTING DISTRICT ENGINEER

DATE APR 14 1978

CONDITIONS OF APPROVAL, IF ANY:

THIS APPROVAL IS RESCINDED IF OPERATIONS  
ARE NOT COMMENCED WITHIN 3 MONTHS.

EXPIRES JUL 14 1978

\*See Instructions On Reverse Side

N MEXICO OIL CONSERVATION COMMISSION  
WELL LOCATION AND ACREAGE DEDICATION PLAT

Form O-1-2  
Supersedes O-128  
Effective 10-65

All distances must be from the corner boundaries of the section.

Operator <b>Supron Energy Corp.</b>		<b>Conoco Federal</b>		Area <b>1</b>
Tract Letter <b>L</b>	Section <b>8</b>	Range <b>11 South</b>	Meridian <b>27 East</b>	County <b>Chaves</b>
Actual Location of Well <b>1980</b> <b>South</b> <b>990</b> <b>West</b>				
Ground Elevation <b>3635.7</b>	Depth and Direction <i>Wellbeat</i>			Depth <b>40</b>

- Outline the acreage dedicated to the subject well by colored pencil on the plat below.
- If more than one lease is entered to the well, outline each and identify the well owner and both as to working interest and royalty.
- If more than one lease of different ownership is entered to the well, have the owners been consolidated by communitization, unitization, forced pooling, or otherwise?

☐ Yes    ☐ No    If answer is "yes," type of consolidation:

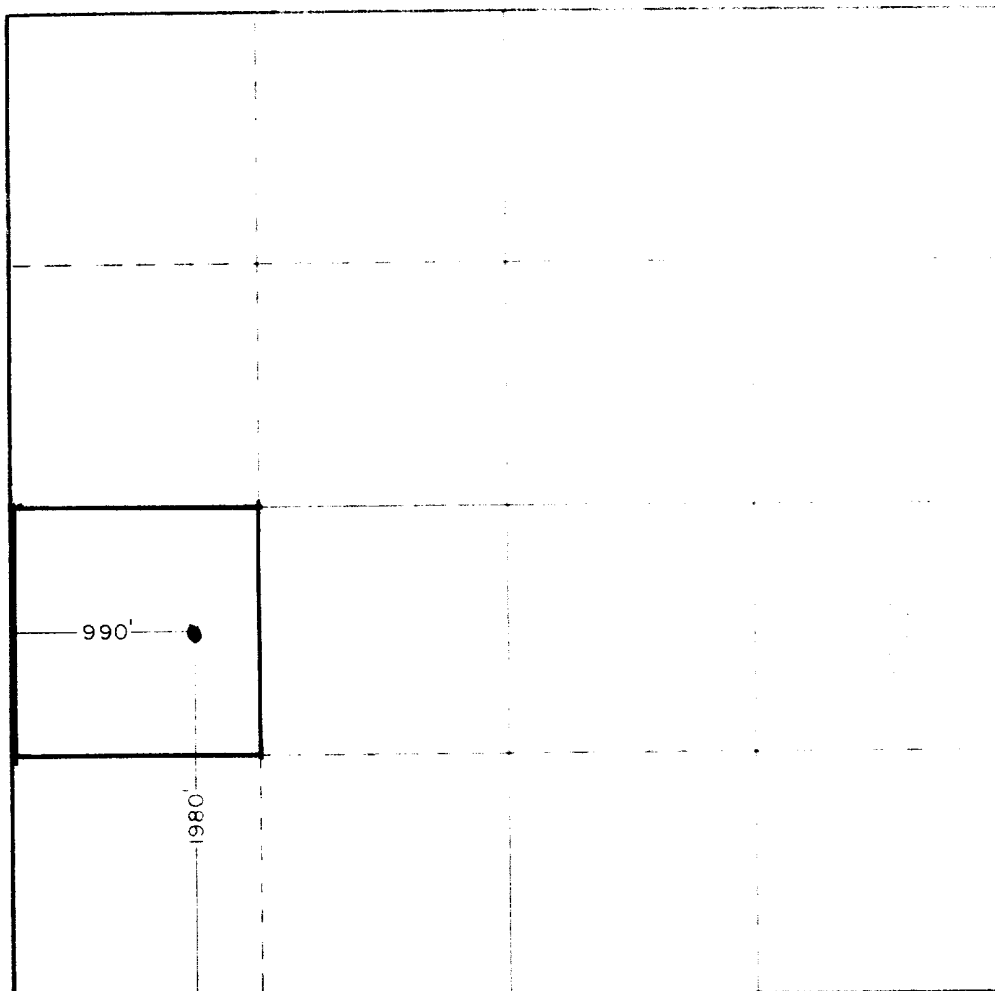
If answer is "no," list the owners and their interests (attach to actual plat or on reverse side of this form if necessary):

No allowable will be assigned to the well unless interests have been consolidated by communitization, unitization, forced-pooling, or otherwise for until a new standard unit is formed, such unit must be approved by the Commission.

**RECEIVED**

**FEB 3 1978**

**U.S. GEOLOGICAL SURVEY  
ARTESIA, NEW MEXICO**



**CERTIFICATION**

I hereby certify that the information contained herein is true and complete to the best of my knowledge and belief.

*Dan R. Collier*

**Dan R. Collier**

**Operations Assistant**

**SUPRON ENERGY CORPORATION**

**February 1, 1978**

I hereby certify that the well location shown on this plat was plotted from field notes and surveys made by me or by others under my supervision, and that the same are true to the best of my knowledge and belief.

**December 10, 1977**

*John W. West*  
**676**

NE MEXICO OIL CONSERVATION COMMISSION  
WELL LOCATION AND ACREAGE DEDICATION AT

Form C-112  
Supersedes C-128  
Effective 11-65

All distances must be from the corner boundary of the well.

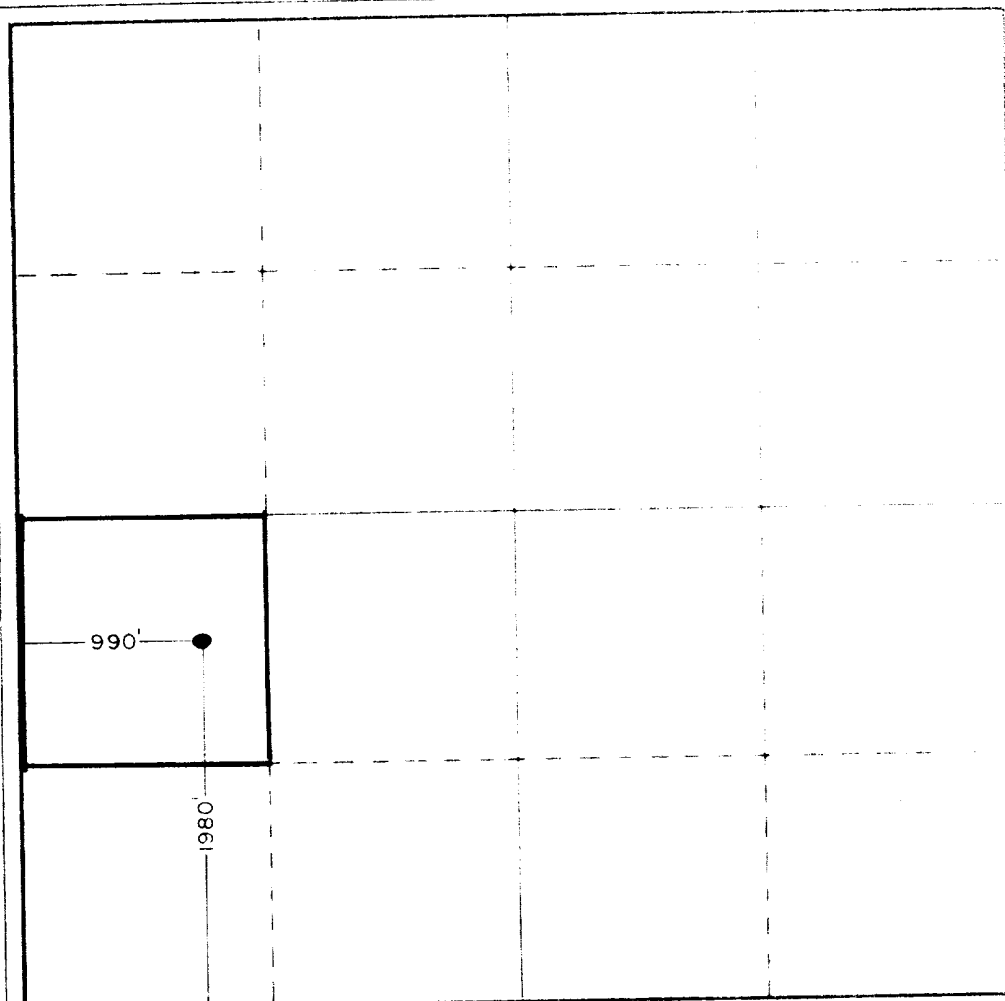
Operator <b>Supron Energy Corp.</b>		Conoco Federal		Acres <b>1</b>
Tract Lease <b>L</b>	Section <b>8</b>	Range <b>11 South</b>	Meridian <b>27 East</b>	County <b>Chaves</b>
Actual True North Location of Well				
<b>1980</b>	feet from the	<b>South</b>	<b>990</b>	feet from the
Ground surface elev. <b>3635.7</b>	Elevation of		<b>40</b>	feet from the

- Outline the acreage dedicated to the subject well by colored pencil or hatchure marks on the plat below.
- If more than one lease is dedicated to the well, outline each and identify the well stop thereof both as to working interest and royalty.
- If more than one lease of different ownership is dedicated to the well, have the interests of all owners been consolidated by communitization, unitization, forced pooling, etc.?

☐ Yes ☐ No If answer is "yes," type of consolidation \_\_\_\_\_

If answer is "no," list the owners and tract descriptions which have actually been consolidated (use reverse side of this form if necessary) \_\_\_\_\_

No allowable will be assigned to the well until all interests have been consolidated (by communitization, unitization, forced-pooling, or otherwise) or until a non-standard unit (eliminating such interests) has been approved by the Commission.



CERTIFICATION

I hereby certify that the information contained herein is true and complete to the best of my knowledge and belief.

*Dan R. Collier*

**Dan R. Collier**

**Operations Assistant**

**SUPRON ENERGY CORPORATION**

**February 1, 1978**

I hereby certify that the well location shown on this plat was plotted from field notes of actual surveys made by me or under my supervision, and that the same is true and correct to the best of my knowledge and belief.

**December 10, 1977**

\_\_\_\_\_  
Registered Professional Engineer

*John W. West*  
**676**

# SUPRON ENERGY CORPORATION

SUITE 1700, CAMPBELL CENTRE  
8350 NORTH CENTRAL EXPRESSWAY  
DALLAS, TEXAS 75206

TELEPHONE: (214) 691-9141  
TWX: (910) 861-9112  
SUPCO-DAL.

January 31, 1978

District Engineer  
United States Geological Survey  
Drawer U  
Artesia, New Mexico 88210

Dear Sir:

Listed below, as per Requirement for Compliance with NTL-6, is the geological and well control information for Supron Energy Corporation's "Conoco Federal No. 1 well located in the NW/4 SW/4 of Section 8, Township 11 South, Range 27 East, Chaves County, New Mexico:

1. The surface formation is Cretaceous.
2. The estimated tops of geological markers are shown on the attached geological prognosis.
3. a.) Gas and water producing zones could be encountered in the San Andres (Est 975'), and the Devonian-Pusselman dolomite (Est 6025').  
b.) Oil production is anticipated from the Ellenburger at 6250'.
4. The proposed casing program is as follows:  
a.) Surface Casing: 13 3/8", 48#, H-40 New.  
b.) Intermediate Casing: 8 5/8", 24#, K-55, New.  
c.) Production Casing: 4 1/2", 10.50#, K-55, New.
5. Pressure control equipment for the well will be as follows:  
a.) Casing head: 10" x 8 5/8" Series 900.  
b.) Blow out preventor: 10" Series 900 Schaffer type "B" double name hydraulic or equivalent. B.O.P. will be tested prior to drilling out and checked daily with the results entered on the Driller's Log. (See attached sketch).
6. A fresh water gel mud system will be used from Surface to TD.
7. Auxillary equipment will be as follows:  
a.) Kelly cocks--yes.  
b.) Floats at bit--no.  
c.) Mud system will be monitored by visual means only.  
d.) Full open safety valve on floor--yes.
8. Testing, logging and coring programs are as indicated on attached geological prognosis.
9. No abnormal pressures, temperatures, or hazards are anticipated.
10. The anticipated starting date is February 15, 1978 and operations should last approximately 30 days.

Yours very truly,

*Dan R. Collier*  
Dan R. Collier  
Operations Assistant

DRC/dr

September 23, 1977

WELL PROGNOSIS

COMMANCHE SPRINGS PROSPECT  
Chaves County, New Mexico

RECEIVED

FEB 3 1978

U.S. GEOLOGICAL SURVEY  
ARTESIA, NEW MEXICO

WELL NAME AND NUMBER:

Supron Energy Corp. #1 Conoco-Fed.

LOCATION:

990'  
1980'/S & 1320'/W of Sec. 8, T-11-S, R-27-E. (Approximately 12 miles east of Roswell, New Mexico.)

ELEVATION:

Ground level 3610 (est.) Kelly Bushing 3620 (est.)

PROPOSED DEPTH:

Approximately 6600' or depth sufficient to test the Ellenburger dolomite.

OBJECTIVES:

Primary objectives include the Permo-Penn sands and carbonates and the Devonian-Fusselman dolomite. Secondary objectives are the Ellenburger dolomite and the San Andres dolomite.

ESTIMATED FORMATION TOPS:

San Andres	975
Glorietta	2440
Tubb	3850
Abo	4600
Lower Wolfcamp	5225
Base of Penn-TopSiluro-Dev	6025
Ellenburger	6250

SAMPLES AND DRILLING TIME:

Two sets of 10' samples should be caught from the base of surface casing (or 500' whichever is the shallowest) to total depth. Two copies of 10' drilling time should be kept over the same interval.

CORES:

None anticipated.

OPEN HOLE LOGS:

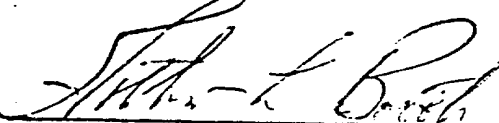
A one man mud logging unit will be used from approximately 5100' to total depth. Electric logs will consist of GR-CNL-Density w/Caliper and Dual Laterolog.

DRILLING PROBLEMS:

Possible heaving or "sticky" shale in the Abo at approximately 4600'. This problem can usually be controlled or prevented by minimal water loss control. No other problems are anticipated.


SUPRON ENERGY CORP. PERSONNEL:

Art Booth	(214) 691-9141 (office) (214) 424-2908 (home)
J. W. Higgins	(214) 691-9141 (office) (214) 387-9323 (home)
Haskell Fleetwood	(214) 691-9141 (office) (214) 234-5261 (home)



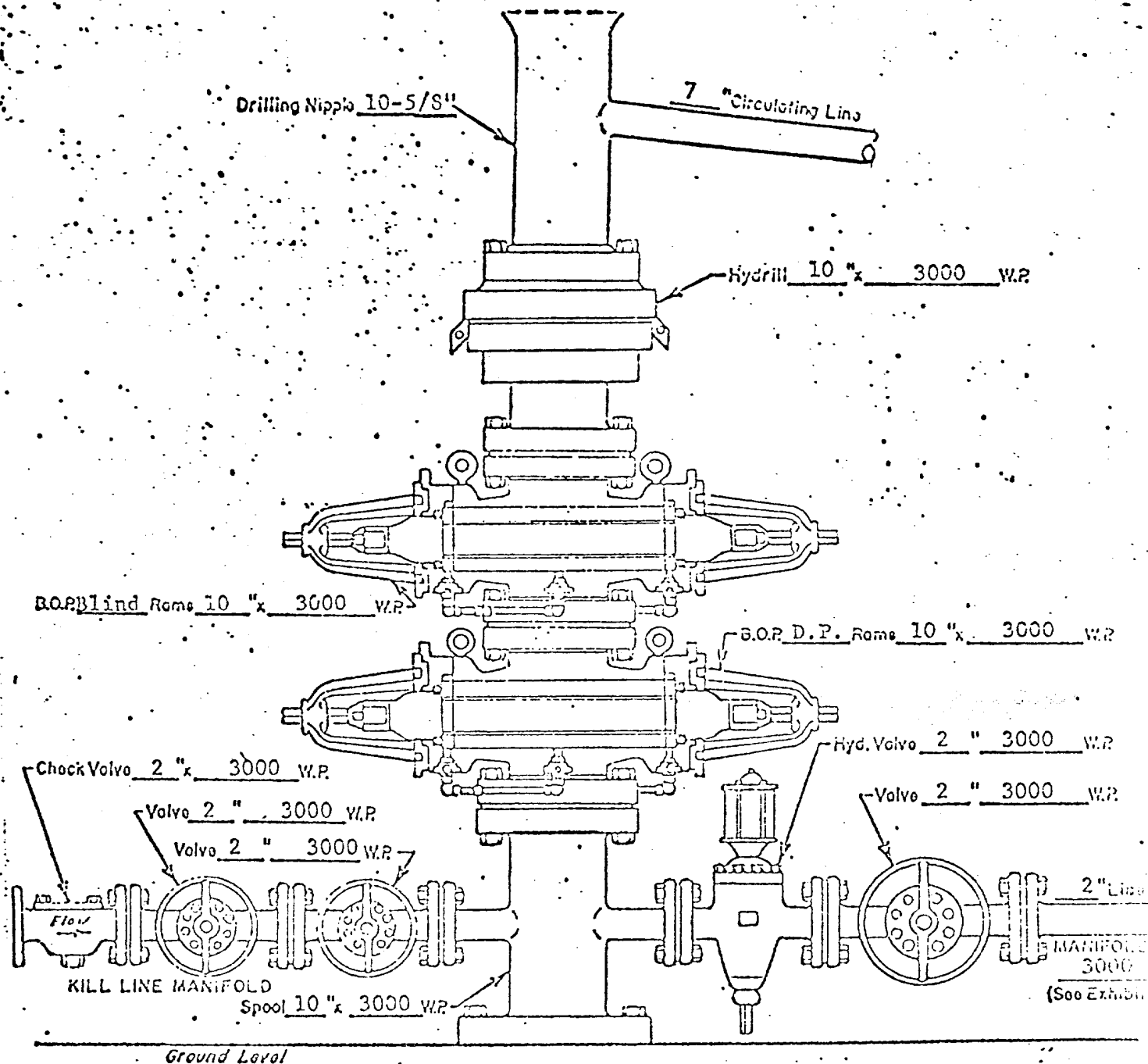
Arthur L. Booth  
Division Geologist

Approved: \_\_\_\_\_

  
J. W. Higgins

DISTRIBUTION

Mr. A. M. Wiederkehr  
Mr. L. S. Muennink  
Mr. J. W. Higgins  
Mr. Sudesh Arora  
Mr. H. Fleetwood  
Mr. B. J. Curtis  
Geology File



WELL HEAD B.O.P.  
3000 W.P.

☐ Manual  
☒ Hydraulic

# SUPRON ENERGY CORPORATION

SUITE 1700, CAMPBELL CENTRE  
8350 NORTH CENTRAL EXPRESSWAY  
DALLAS, TEXAS 75206

TELEPHONE: (214) 691-9141  
TWX: (910) 861-9112  
SUPCO-DAL.

January 31, 1978

District Engineer  
United States Geological Survey  
Drawer U  
Artesia, New Mexico 88210

Dear Sir:

Listed below, as required for compliance with NTL-6, are the multi-point requirements for Supron Energy Corporation's "Conoco Federal No. 1" well located in the NW/4 SW/4 Section 8, Township 11 South, Range 27 East, Chaves County, New Mexico:

1.
  - a.) See attached survey plat for the proposed well site as staked.
  - b.) The proposed location is approximately twelve miles East of Roswell, New Mexico (See attached map.)
  - c.) See attached map for existing roads.
  - d.) See attached map for existing roads with-in a 3-mile radius.
  - e.) See attached topographic map for existing roads with-in a 1-mile radius.
  - f.) Any damage to existing roads resulting from our operations in the area will be repaired by Supron Energy Corporation.
2. See attached topographic map for proposed access road.
  - a.) Proposed access will be approximately 16' wide.
  - b.) Maximum grade will be less than one per cent.
  - c.) There will be no turn-outs.
  - d.) For drilling operations, the access will be bladed for marking purposes only with a minimum or no drainage provided. If a successful well is made, the access will be upgraded with drainage provided as is necessary.
  - e.) No culverts or major cuts and fills will be required.
  - f.) Access will not be surfaced for drilling operations. If the well is successful, the road will be upgraded and surfaced as necessary with commercially available materials.
  - g.) No cattle guards will be required.
  - h.) The access has been staked.
3. Existing wells with-in a 1-mile radius are as shown on attached topographic map.
  - a.) Water wells--None
  - b.) Abandoned wells--Three



District Engineer  
United States Geological Survey  
Artesia, New Mexico

Page 2--continued

- c.) Temporarily Abandoned wells--One
  - d.) Disposal wells--None
  - e.) Drilling wells--None
  - f.) Producing wells--Three
  - g.) Injection wells--None
  - h.) Monitoring or Observation wells--None
4. a.) Supron does not have any production facilities in this area.
- b.) If production is established from this well, production facilities will be installed. (See attached lay-out sketch).
- c.) Disturbed areas no longer needed will be reshaped, top soil re-distributed as per B.L.M. requirements.
5. a.) Water to be used in the drilling operations of this well will be obtained from a water well we propose to drill at this location.
6. Any construction materials required will be obtained through commercial sources.
7. Waste materials will be contained and disposed as follows:
- a.) Cuttings--contained in earthen pit and buried after completion of operations.
  - b.) Drilling fluids--contained in earthen pits and back filled when sufficiently dry.
  - c.) Produced liquids--contained in tanks and disposed of in an acceptable manner yet to be determined.
  - d.) Sewage--approved sanitation facilities will be provided by the drilling contractor and employees required to use them.
  - e.) Garbage and other waste materials will be contained in an adequately fenced trash pit and buried after completion of operations.
  - f.) Area will be cleared as much as practical prior to the rig moving out and restored to B.L.M. requirements as soon as possible thereafter.
8. There will be no camps or airstrips constructed.
9. See attached layout sketch and topographic map.
- a.) Area is essentially level with no major cuts or fills required.
  - b.) See attached layout sketch.
  - c.) See attached layout sketch.
  - d.) Reserve pits will be lined if necessary.
10. Surface restoration will be as follows:
- a.) During construction, topsoil will be stripped and stock piled on the edge of the location. As soon as practical after completion of operations, the location will be leveled and the topsoil redistributed over the area. Waste material will be disposed of as stated in Section 7.

District Engineer  
United States Geological Survey  
Artesia, New Mexico

Page 3-continued

- b.) As soon as practical after completion of operations, the area will be re-vegetated as per B.L.M. requirements.
- c.) Reserve pits will be fenced prior to the rig being moved off.
- d.) All oil will be removed from reserve pits.
- e.) Rehabilitation will commence as soon as practical after completion of operations and diligently pursued to completion.

11. General Information

- a.) The proposed location is essentially level with no significant geological features. The soil is surface sand with sparse vegetation.
- b.) Surface ownership is Federal with a lease of grazing right to Lillian Graham.
- c.) The nearest occupied dwelling to the proposed location is approximately  $1\frac{1}{2}$  miles. There are no known archeological, historical or cultural sites in the area.

12. Supron Energy Corporation's representative will be:

Dan R. Collier  
1700 Campbell Centre  
8350 North Central Expressway  
Dallas, TX 75206 Phone: 214-691-9141

13. Certification:

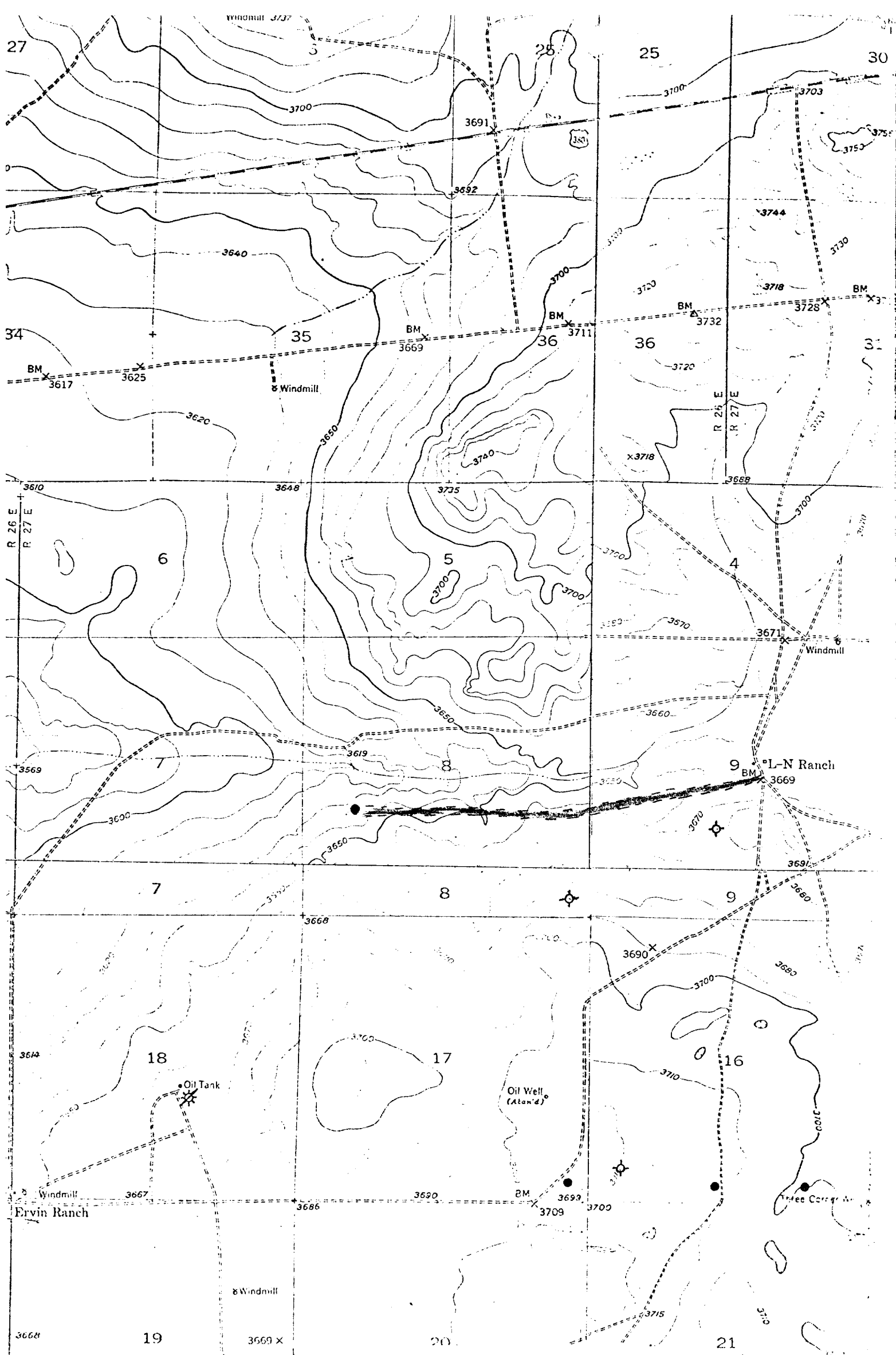
I hereby certify that I, or persons under my direct supervision, have inspected the proposed drillsite and access route; that I am familiar with the conditions which presently exist; that the statements made in this plan are, to the best of my knowledge, true and correct; and, that the work associated with the operations proposed herein will be performed by Supron Energy Corporation and it's contractors and sub-contractors in conformity with this plan and the terms and conditions under which it is approved.

2/1/78

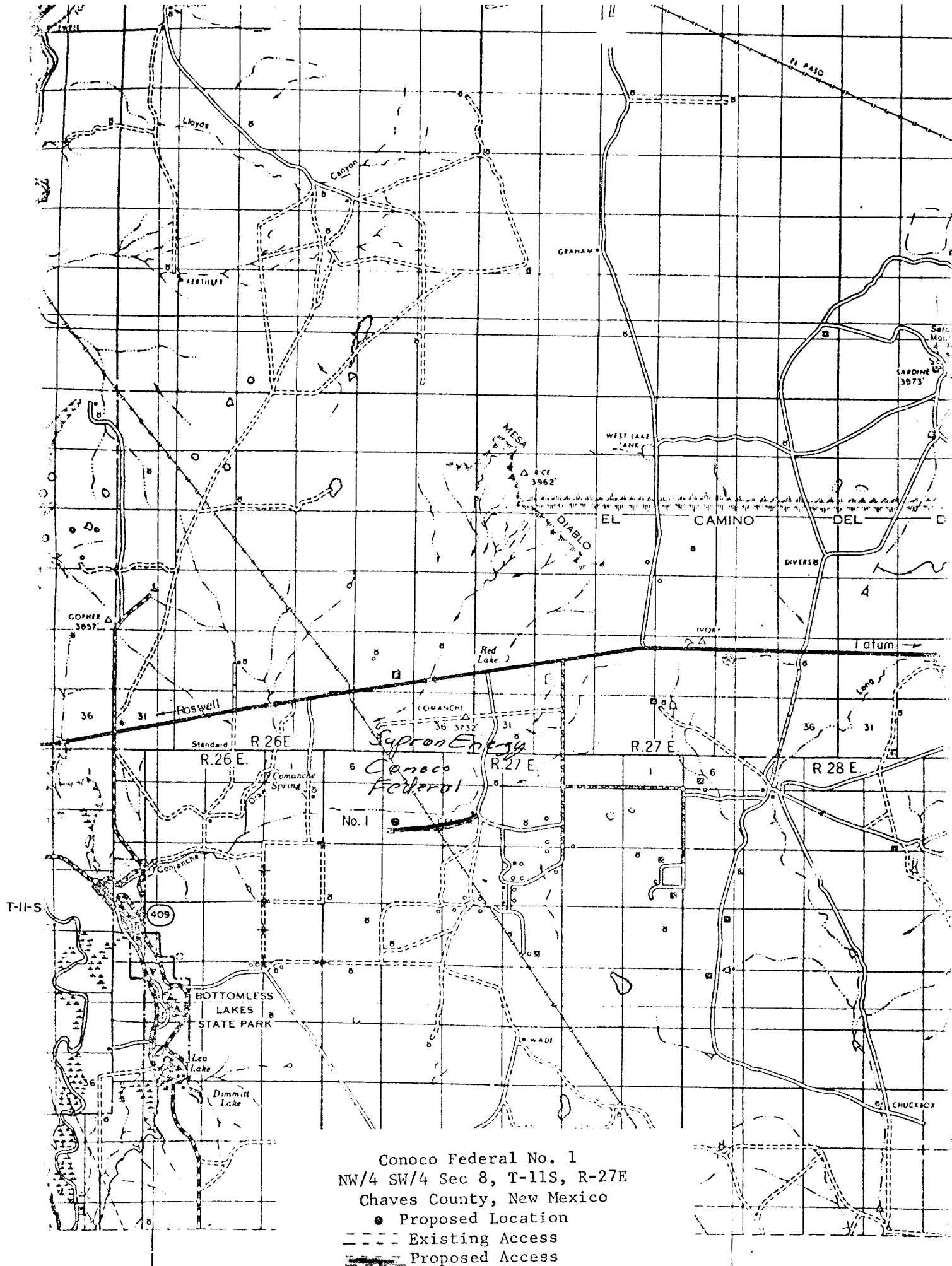
Date

Dan R. Collier

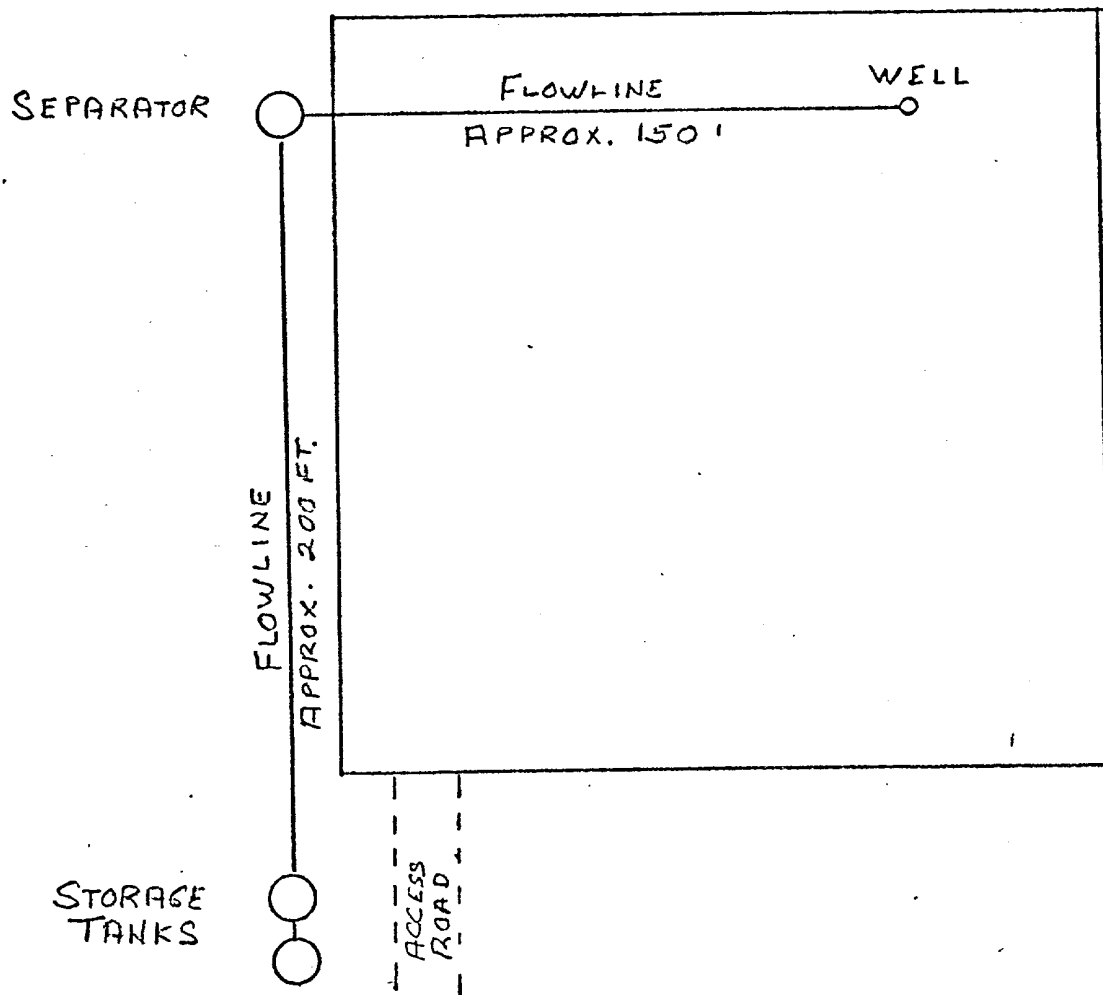
Dan R. Collier  
Operations Assistant



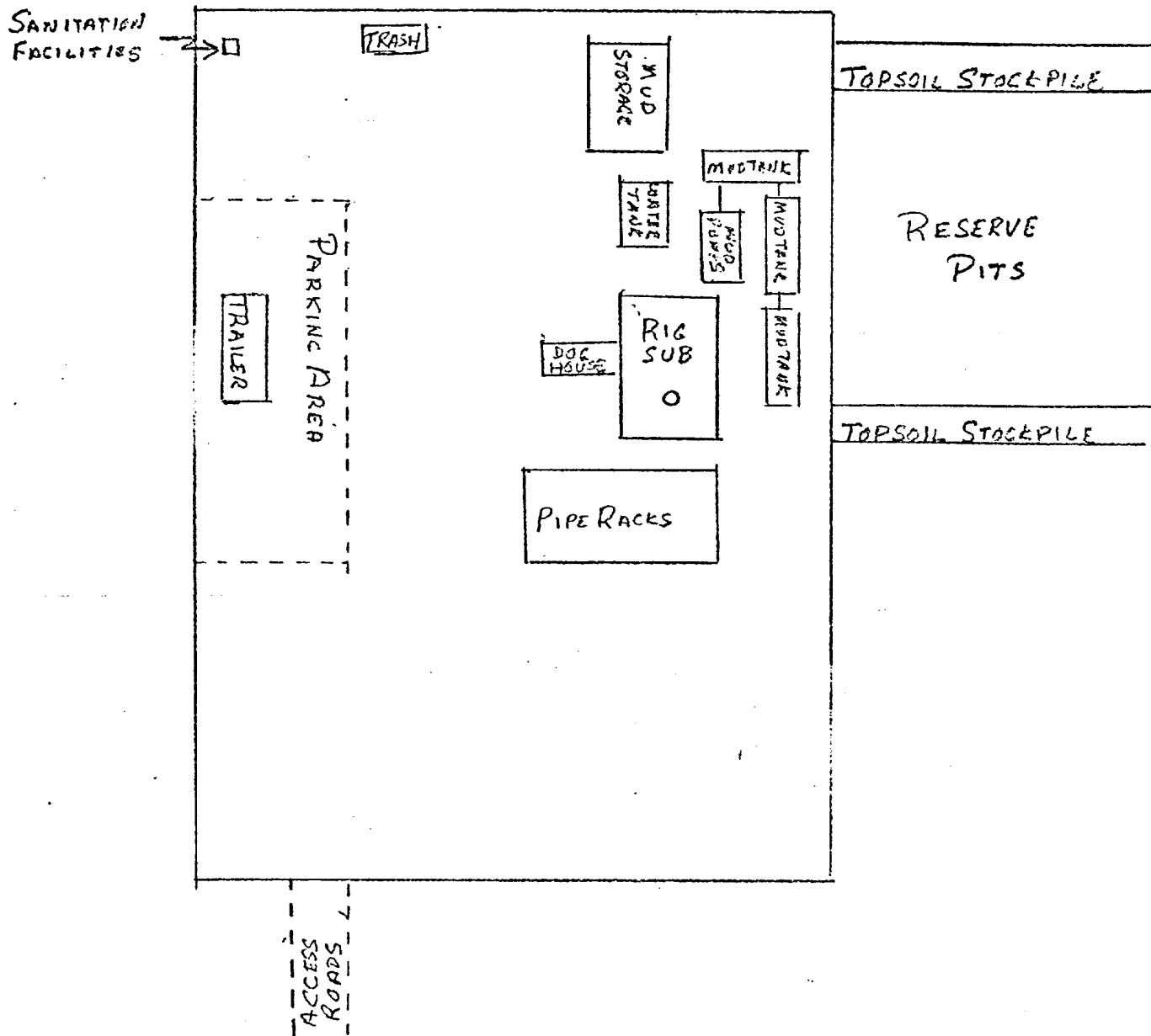
Conoco Federal No. 1  
NW/4 SW/4 Sec 8, T-11S, R-27E  
Chaves County, New Mexico  
● Proposed Location  
--- Existing Access  
--- Proposed Access



Conoco Federal No. 1  
 NW/4 SW/4 Sec 8, T-11S, R-27E  
 Chaves County, New Mexico



Proposed Production Facilities  
Conoco Federal No. 1  
Chaves County, New Mexico



Drig. Rig Set-up Sketch  
 Conoco Federal No. 1  
 Chaves County, New Mexico