

NE MEXICO OIL CONSERVATION COMMISSION
WELL LOCATION AND ACREAGE DEDICATION PLAT

Form C-102
Supersedes C-128
Effective 1-1-65

All distances must be from the outer boundaries of the Section.

Operator Fred Pool Drlg. Co.			Lease Plains State		Well No. No. 8
Unit Letter	Section 16	Township 11S	Range 28E	County Chaves	
Actual Footage Location of Well: 990 feet from the south line and 990 feet from the west line					
Ground Level Elev. 3676.23	Producing Formation S.A.		Pool W. E. Chisum S.A.		Dedicated Acreage: 40 Acres

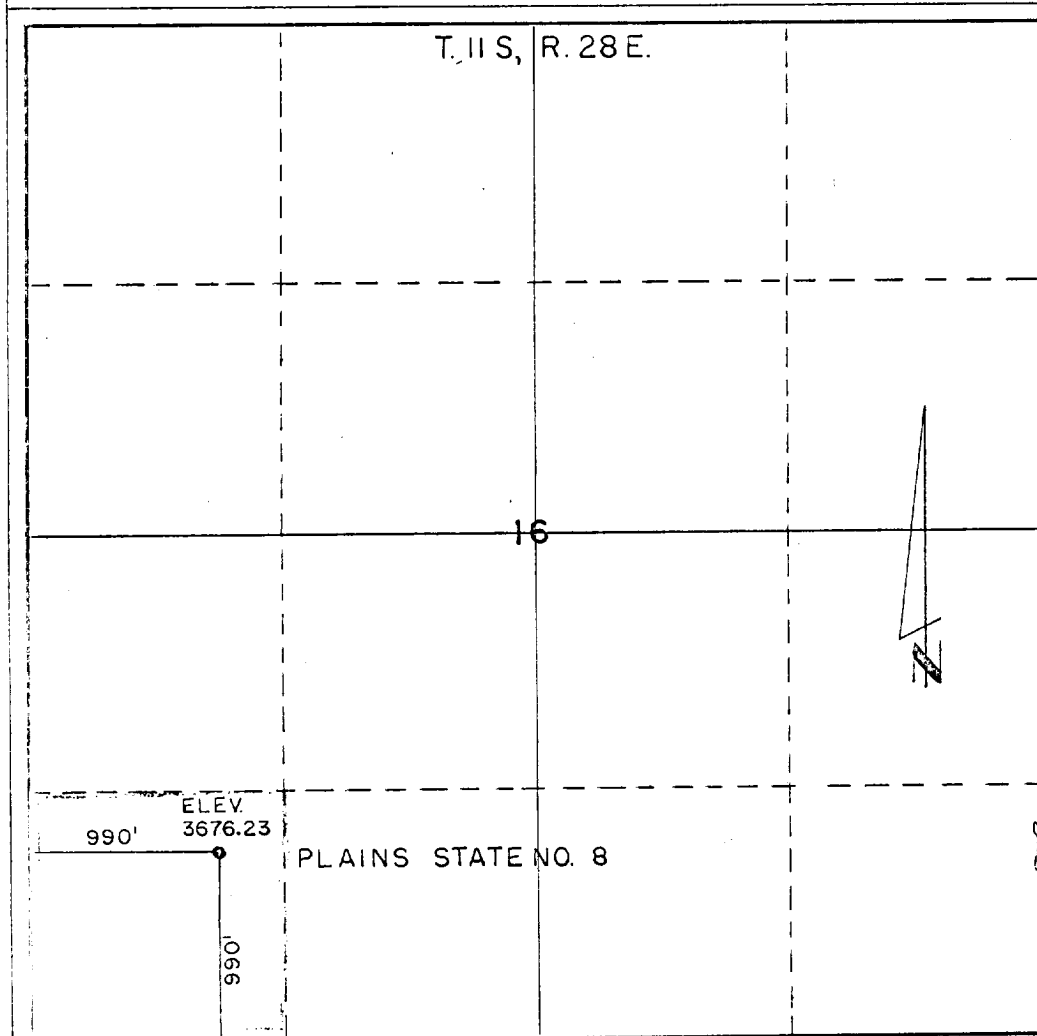
1. Outline the acreage dedicated to the subject well by colored pencil or hachure marks on the plat below.
2. If more than one lease is dedicated to the well, outline each and identify the ownership thereof (both as to working interest and royalty).
3. If more than one lease of different ownership is dedicated to the well, have the interests of all owners been consolidated by communitization, unitization, force-pooling, etc?

☐ Yes ☐ No If answer is "yes," type of consolidation ARTESIA, OFFICE

MAY - 9 1978

If answer is "no," list the owners and tract descriptions which have actually been consolidated (by communitization, unitization, forced-pooling, or otherwise) or until a non-standard unit, eliminating such interests, has been approved by the Commission.

No allowable will be assigned to the well until all interests have been consolidated (by communitization, unitization, forced-pooling, or otherwise) or until a non-standard unit, eliminating such interests, has been approved by the Commission.



CERTIFICATION

I hereby certify that the information contained herein is true and complete to the best of my knowledge and belief.

Fred Pool, Jr.

Name

Owner

Position

Fred Pool Drlg. Co.

Company

5-4-78

Date

Fred Pool, Jr.

I hereby certify that the well location shown on this plat was plotted from field notes of actual surveys made by me or under my supervision, and that the same is true and correct to the best of my knowledge and belief.

Date Surveyed

April 3, 1978

Registered Professional Engineer and/or Land Surveyor

Thomas T. Mann, P.E.

Certificate No.

NM No. 277