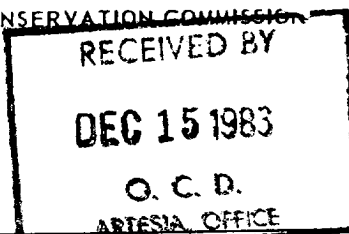


NO. OF COPIES RECEIVED	
DISTRIBUTION	
SANTA FE	✓
FILE	✓✓
U.S.G.S.	✓
LAND OFFICE	✓
OPERATOR	✓

NEW MEXICO OIL CONSERVATION COMMISSION



Form C-101
Revised 1-1-65

5A. Indicate Type of Lease
STATE ☒ FEE ☐

5. State Oil & Gas Lease No.

APPLICATION FOR PERMIT TO DRILL, DEEPEN, OR PLUG BACK

1a. Type of Work DRILL <input type="checkbox"/> DEEPEN <input type="checkbox"/> PLUG BACK <input type="checkbox"/>		7. Unit Agreement Name
b. Type of Well OIL WELL <input checked="" type="checkbox"/> GAS WELL <input type="checkbox"/> OTHER RE-ENTRY <input type="checkbox"/> SINGLE ZONE <input type="checkbox"/> MULTIPLE ZONE <input type="checkbox"/>		8. Farm or Lease Name Amoco State
2. Name of Operator Cibola Energy Corporation		9. Well No. 1
3. Address of Operator P.O. Box 1668, Albuquerque, New Mexico 87103		10. Field and Pool, or Wildcat Wildcat-San Andres
4. Location of Well UNIT LETTER J LOCATED 1980 FEET FROM THE South LINE AND 1980 FEET FROM THE East LINE OF SEC. 16 TWP. 12S RGE. 26E NMPM		12. County Chaves
19. Proposed Depth 1600'		19A. Formation San Andres
20. Rotary or C.T. Rotary		
21. Elevations (Show whether DF, RT, etc.) 4234 GL	21A. Kind & Status Plug. Bond Statewide	21B. Drilling Contractor Pecos Well Service
22. Approx. Date Work will start Dec. 25, 1983		

PROPOSED CASING AND CEMENT PROGRAM

SIZE OF HOLE	SIZE OF CASING	WEIGHT PER FOOT	SETTING DEPTH	SACKS OF CEMENT	EST. TOP
17 1/2"	13 3/8"	48#	322	350	Surface
12 1/4"	8 5/8"	24#	1360	1385	Surface

Cibola Energy Corporation proposes to drill out two plugs, the first at surface and the second from 1300' to 1400'. The hole will be cleaned out to 1600' and swab tested. If production looks possible 4 1/2" casing will be run to 1600'. It will be set with 125 sacks Class C Cement. If the hole is determined to be dry, the hole will be plugged as follows.

1st plug 50 sacks Class C cement 1300' to 1400'.

2nd plug 10 sacks at surface with dry hole marker.

APPROVAL VALID FOR 180 DAYS

PERMIT EXPIRES 6-16-84

UNLESS DRILLING UNDERWAY

OTD-6210

14A 7-1-98
Posted G.P. 9
9D-1048 Book
12-16-83

Formerly Cibola Energy Corp. - Amoco St. 1

IN ABOVE SPACE DESCRIBE PROPOSED PROGRAM: IF PROPOSAL IS TO DEEPEN OR PLUG BACK, GIVE DATA ON PRESENT PRODUCTIVE ZONE AND PROPOSED NEW PRODUCTIVE ZONE. GIVE BLOWOUT PREVENTER PROGRAM, IF ANY.

I hereby certify that the information above is true and complete to the best of my knowledge and belief.

Signed *Phyllis Boyd* Title Drilling Secretary Date 12-13-83

(This space for State Use)

APPROVED BY *M. J. H. H.* TITLE OIL AND GAS INSPECTOR DATE DEC 16 1983

CONDITIONS OF APPROVAL, IF ANY:

NEW MEXICO OIL CONSERVATION COMMISSION
WELL LOCATION AND ACREAGE DEDICATION AT
DEC 15 1983

Form O.C.D.
Supercedes C-128
Effective 12-83

All distances must be from the outer boundaries of the Section

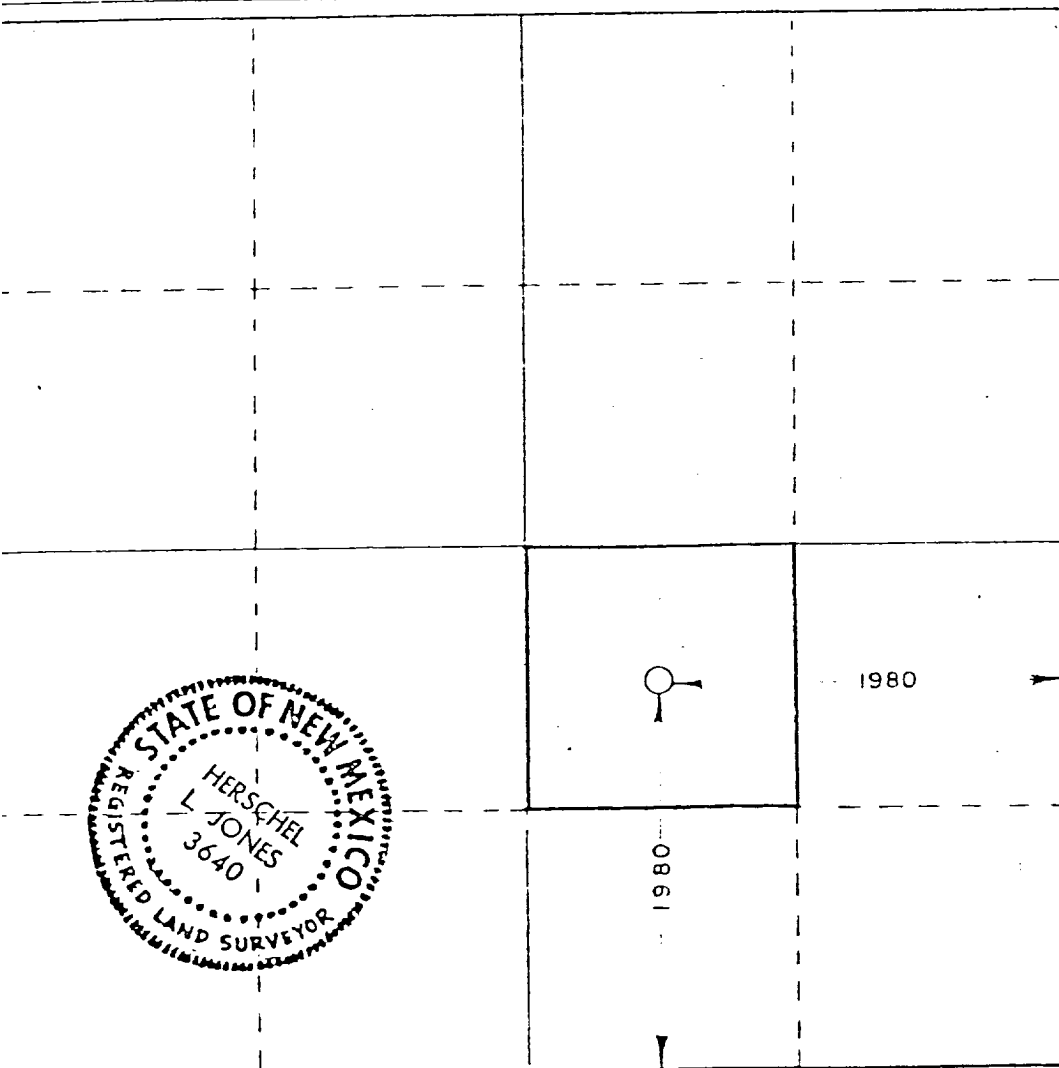
Operator Cibola Energy Corporation		Lease O. C. D. ARCO State ARTESIA, N.M.		Well No. 1
Section "J"	Section 16	Township 12 South	Range 26 East	County chaves
Well Location Location of well:				
1980	feet from the	South	line and	1980
				feet from the
				East
Well Elev. 3470.0	Producing Formation San Andres		Pool Wildcat	Dedicated Acreage 40

- 1 Outline the acreage dedicated to the subject well by colored pencil or hachure marks on the plat below.
- 2 If more than one lease is dedicated to the well, outline each and identify the ownership thereof (both as to working interest and royalty).
- 3 If more than one lease of different ownership is dedicated to the well, have the interests of all owners been consolidated by communitization, unitization, force-pooling, etc?

☐ Yes ☐ No If answer is "yes," type of consolidation _____

If answer is "no," list the owners and tract descriptions which have actually been consolidated. (Use reverse side of this form if necessary.) _____

No allowable will be assigned to the well until all interests have been consolidated (by communitization, unitization, forced-pooling, or otherwise) or until a non-standard unit, eliminating such interests, has been approved by the Commission.



CERTIFICATION

I hereby certify that the information contained herein is true and complete to the best of my knowledge and belief

By *[Signature]*

Agent

Company
Supron Energy Corporation

Date
May 12, 1978

I hereby certify that the well location shown on this plat was plotted from field notes of actual surveys made by me or under my supervision, and that the same is true and correct to the best of my knowledge and belief.

Date Surveyed
May 3 1978

Registered Professional Engineer
and or Land Surveyor

[Signature]

3640