

NO. OF COPIES RECEIVED	6
DISTRIBUTION	
SANTA FE	1
FILE	1
U.S.G.S.	2
LAND OFFICE	1
OPERATOR	1

RECEIVED

NEW MEXICO OIL CONSERVATION COMMISSION
MAY 25 1978

O. C. C.
ARTESIA, OFFICE

30-005-60505
Form C-101
Revised 1-1-65

5A. Indicate Type of Lease
STATE <input checked="" type="checkbox"/> FEE <input type="checkbox"/>
5. State Oil & Gas Lease No.
L 6998

APPLICATION FOR PERMIT TO DRILL, DEEPEN, OR PLUG BACK

1a. Type of Work		7. Unit Agreement Name	
b. Type of Well OIL WELL <input type="checkbox"/> GAS WELL <input checked="" type="checkbox"/> OTHER <input type="checkbox"/>		8. Farm or Lease Name Smith JR State Com.	
2. Name of Operator Yates Petroleum Corp. ✓		9. Well No. /	
3. Address of Operator 207 South 4th - Artesia		10. Field and Pool, or Wildcat Wildcat	
4. Location of Well UNIT LETTER L LOCATED 1980 FEET FROM THE South LINE AND 660 FEET FROM THE West LINE OF SEC. 14 TWP. 9S RGE. 26E NMPM		11. County Chaves	
21. Elevations (Show whether DF, RT, etc.) 3807 GR		19. Proposed Depth 6400	
21A. Kind & Status Plug. Bond Blanket		19A. Formation Devonian	
21B. Drilling Contractor LaRue & Muncy		20. Rotary or C.T. Rotary	
22. Approx. Date Work will start June 21, 1978			

PROPOSED CASING AND CEMENT PROGRAM

SIZE OF HOLE	SIZE OF CASING	WEIGHT PER FOOT	SETTING DEPTH	SACKS OF CEMENT	EST. TOP
17 1/2	13 3/8	48#	Approx 320	300SX	Circulate
12 1/4	8 5/8	24#	Approx 1600	800SX	Circulate
7 7/8	5 1/2 or 4 1/2	15.5 or 10.5	TD	250 SX	
			TD	300SX	

Propose to drill and test the Devonian and intermediate formations.
Approx. 320' of surface casing will be run to shut off gravel & casing
and intermediate casing will be set 100' below the Artesian Water zone,
cement circulated on both strings. If commercial will run & cement 5 1/2"
or 4 1/2" casing.

Mud Program: F.W. Gel & LCM to 1600'; KCL water-starch-driskpak to 4200',
Flosal-driskpak-KCL to TD.

BOP Program: BOP's on 8 5/8" casing and tested daily for operational.
Gas not dedicated.

APPROVAL AND
FOR SO DATA SHEET
DRILLING COMMENCED,

EXPIRES 8-29-78

IN ABOVE SPACE DESCRIBE PROPOSED PROGRAM: IF PROPOSAL IS TO DEEPEN OR PLUG BACK, GIVE DATA ON PRESENT PRODUCTIVE ZONE AND PROPOSED NEW PRODUCTIVE ZONE. GIVE BLOWOUT PREVENTER PROGRAM, IF ANY.

I hereby certify that the information above is true and complete to the best of my knowledge and belief.

Signed Eddie M. Mahfordy Title Engineer Date 5-24-78
(This space for State Use)

APPROVED BY W.A. Gussert TITLE SUPERVISOR, DISTRICT H DATE MAY 29 1978
CONDITIONS OF APPROVAL, IF ANY:

NEW MEXICO OIL CONSERVATION COMMISSION
WELL LOCATION AND ACREAGE DEDICATION PLAT

Form C-102
Supersedes C-128
Effective 1-1-65

All distances must be from the outer boundaries of the Section.

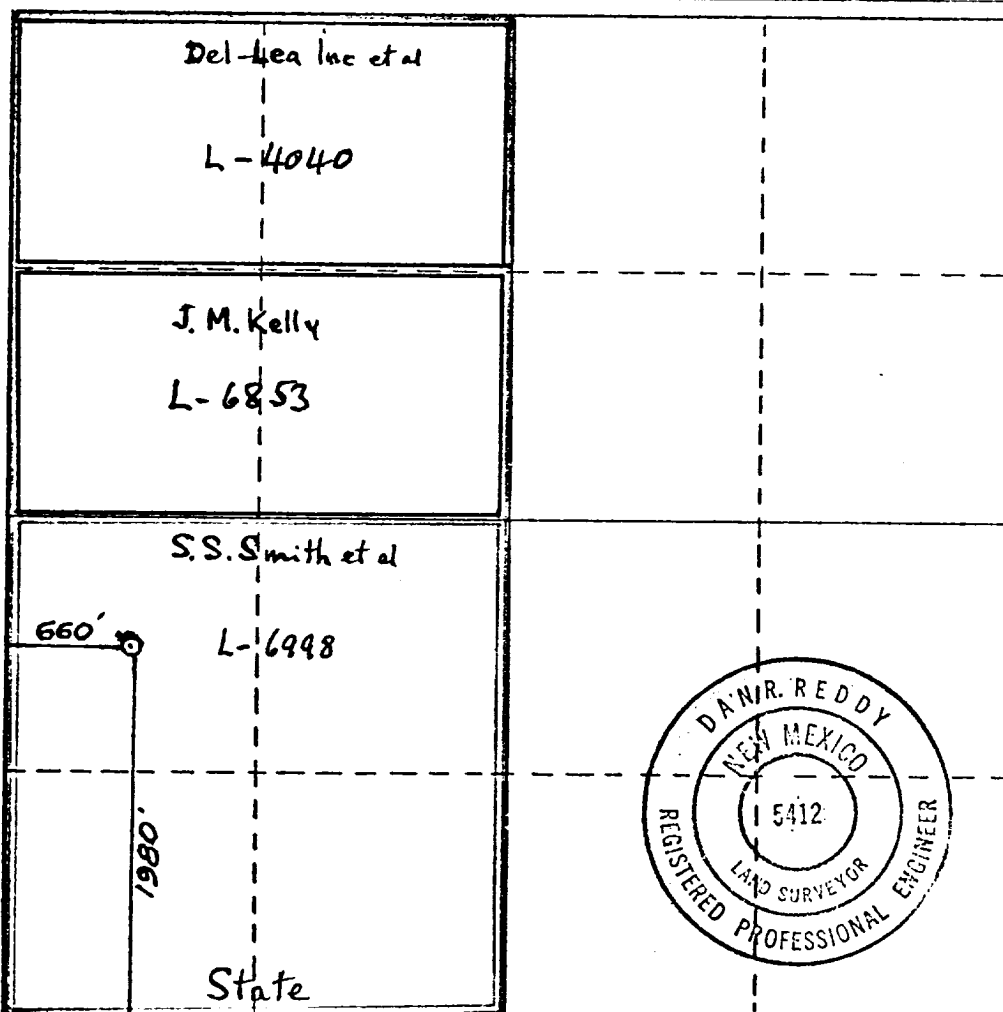
Operator YATES PETROLEUM CORPORATION			Lease Smith JR State Com.		Well No. #1
Unit Letter L	Section 14	Township 9 South	Range 26 East	County Chaves	
Actual Postage Location of Well:					
1980 feet from the South		Line and 660		feet from the West	
Ground Level Elev. 3807.0	Producing Formation Devonian		Pool Wildcat		Dedicated Acreage 3.20

1. Outline the acreage dedicated to the subject well by colored pencil or hatchure marks on the plat below.
2. If more than one lease is dedicated to the well, outline each and identify the ownership thereof (both as to working interest and royalty).
3. If more than one lease of different ownership is dedicated to the well, have the interests of all owners been consolidated by communitization, unitization, force-pooling, etc?

☒ Yes ☐ No If answer is "yes," type of consolidation Communitization

If answer is "no," list the owners and tract descriptions which have actually been consolidated. (Use reverse side of this form if necessary.)

No allowable will be assigned to the well until all interests have been consolidated (by communitization, unitization, forced-pooling, or otherwise) or until a non-standard unit, eliminating such interests, has been approved by the Commission.



CERTIFICATION

I hereby certify that the information contained herein is true and complete to the best of my knowledge and belief.

Eddie M. Mahfood
Name

Eddie M. Mahfood
Position

ENGINEER

YATES PETROLEUM CORP
Company

5-21-78
Date

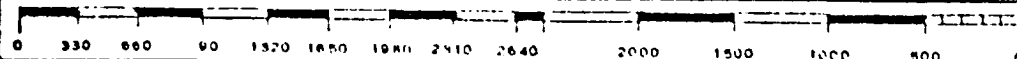
I hereby certify that the well location shown on this plat was plotted from field notes of actual surveys made by me or under my supervision, and that the same is true and correct to the best of my knowledge and belief.

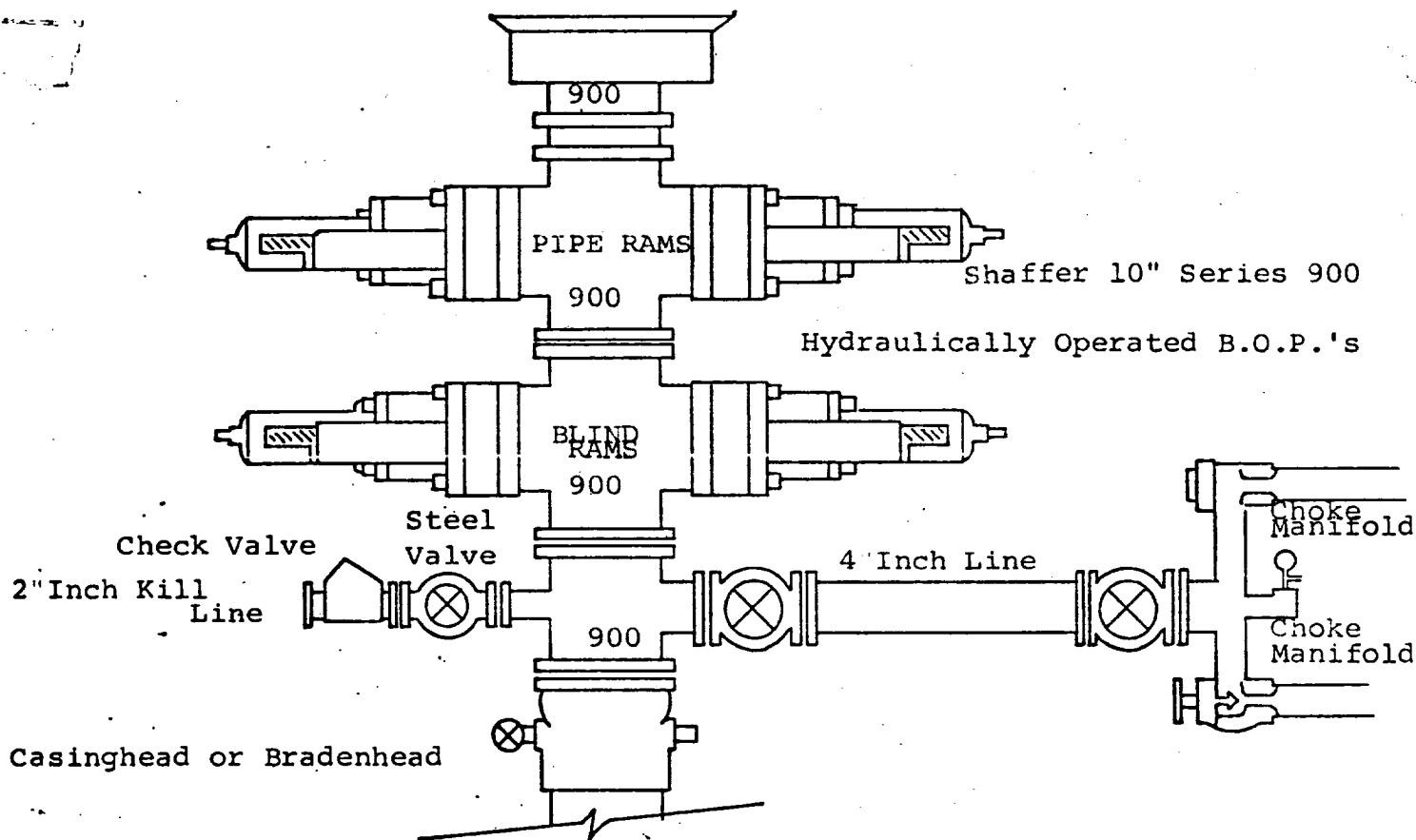
Date Surveyed
May 13, 1978

Registered Professional Engineer and/or Land Surveyor

Dan R. Reddy
Certificate No.

NM PE&LS #5412





THE FOLLOWING CONSTITUTE MINIMUM BLOWOUT PREVENTER REQUIREMENTS

1. All preventers to be hydraulically operated with secondary manual controls installed prior to drilling out from under casing.
2. Choke outlet to be a minimum of 4" diameter.
3. Kill line to be of all steel construction of 2" minimum diameter.
4. All connections from operating manifolds to preventers to be all steel. hole or tube a minimum of one inch in diameter.
5. The available closing pressure shall be at least 15% in excess of that required with sufficient volume to operate the B.O.P.'s.
6. All connections to and from preventer to have a pressure rating equivalent to that of the B.O.P.'s.
7. Inside blowout preventer to be available on rig floor.
8. Operating controls located a safe distance from the rig floor.
9. Hole must be kept filled on trips below intermediate casing. Operator not responsible for blowouts resulting from not keeping hole full.
10. D. P. float must be installed and used below zone of first gas intrusion.

