

NMOCC COPY

SUBMIT IN TRIPLICATE*

Form approved.
Budget Bureau No. 42-R1425.UNITED STATES
DEPARTMENT OF THE INTERIOR
GEOLOGICAL SURVEY

30-005-60509

APPLICATION FOR PERMIT TO DRILL, DEEPEN, OR PLUG BACK

1a. TYPE OF WORK

DRILL ☒DEEPEN ☐PLUG BACK ☐

b. TYPE OF WELL

OIL
WELL ☒GAS
WELL ☐

OTHER

SINGLE
ZONE ☐MULTIPLE
ZONE ☐

2. NAME OF OPERATOR

Paul Slayton ✓

3. ADDRESS OF OPERATOR

Post Office Box 1936, Roswell, New Mexico 88201

4. LOCATION OF WELL (Report location clearly and in accordance with any State requirements.)*

At surface

660' FNL & 330' FWL

At proposed prod. zone

14. DISTANCE IN MILES AND DIRECTION FROM NEAREST TOWN OR POST OFFICE*

12 miles east of Roswell, New Mexico

O. C. C.
ARTESIA, OFFICE

15. DISTANCE FROM PROPOSED*

LOCATION TO NEAREST
PROPERTY OR LEASE LINE, FT.
(Also to nearest drlg. unit line, if any)

330'

16. NO. OF ACRES IN LEASE

1120

17. NO. OF ACRES ASSIGNED
TO THIS WELL

40

18. DISTANCE FROM PROPOSED LOCATION*

TO NEAREST WELL, DRILLING, COMPLETED,
OR APPLIED FOR, ON THIS LEASE, FT.

660'

19. PROPOSED DEPTH

1265'

20. ROTARY OR CABLE TOOLS

Rotary and Cable Tool

21. ELEVATIONS (Show whether DF, RT, GR, etc.)

Approx. 3506 GR

22. APPROX. DATE WORK WILL START*

23.

PROPOSED CASING AND CEMENTING PROGRAM

SIZE OF HOLE	SIZE OF CASING	WEIGHT PER FOOT	SETTING DEPTH	QUANTITY OF CEMENT
10 3/4"	8 5/8"	26#	200'	Circ to surface
7 7/8"	5 1/2"	14#	1200'	100 sxs

After setting 8 5/8" csg we intend to install Controll Head. Drill to 1200' with Rotary Rig. Set 5 1/2" csg and move in Cable Tool Rig and tail in with tools to 1265'. No additional roads nor pad will be needed.

RECEIVED
MAY 15 1978
U.S. GEOLOGICAL SURVEY
ARTESIA, NEW MEXICO

IN ABOVE SPACE DESCRIBE PROPOSED PROGRAM: If proposal is to deepen or plug back, give data on present productive zone and proposed new productive zone. If proposal is to drill or deepen directionally, give pertinent data on subsurface locations and measured and true vertical depths. Give blowout preventer program, if any.

24.

SIGNED

Paul Slayton

TITLE

Operator

DATE

May 10, 1978

(This space for Federal or State office use)

PERMIT NO.

APPROVAL DATE

JUN 20 1978

APPROVED BY

Albert K. Hall

TITLE

ACTING DISTRICT ENGINEER

DATE

JUN 20 1978

CONDITIONS OF APPROVAL, IF ANY:

THIS APPROVAL IS RESCINDED IF OPERATIONS
ARE NOT COMMENCED WITHIN 3 MONTHS.

EXPIRES SEP 20 1978

*See Instructions On Reverse Side

NEW MEXICO OIL CONSERVATION COMMISSION
WELL LOCATION AND ACREAGE DEDICATION PLAT

Form C-102
Supersedes C-128
Effective 1-1-65

All distances must be from the outer boundaries of the Section.

Operator <i>Paul Slayton</i>			Lease <i>1111</i>		Well No. <i>1</i>
Unit Letter <i>R</i>	Section <i>14</i>	Township <i>11 South</i>	Range <i>26 E</i>	County <i>Chaves, New Mexico</i>	
Actual Footage Location of Well: <i>660</i> feet from the <i>North</i> line and <i>330'</i> feet from the <i>West</i> line					
Ground Level Elev. <i>3510 ±</i>	Producing Formation <i>S.A.</i>		Pool <i>U.I. Comanche SA</i>		Dedicated Acreage: <i>40</i> Acres

1. Outline the acreage dedicated to the subject well by colored pencil or hachure marks on the plat below.
2. If more than one lease is dedicated to the well, outline each and identify the owner (both as to working interest and royalty).
3. If more than one lease of different ownership is dedicated to the well, have the interests of all owners been consolidated by communitization, unitization, force-pooling, etc?

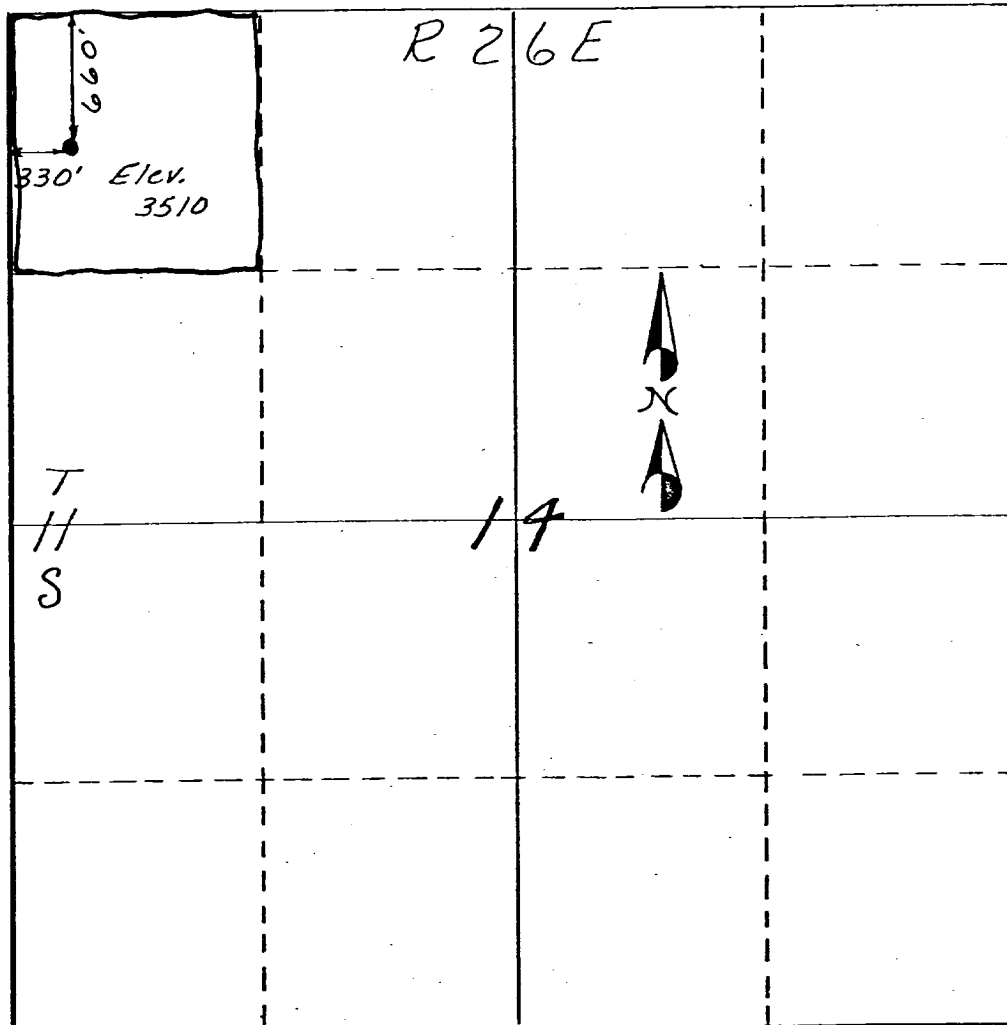
☐ Yes ☐ No If answer is "yes," type of consolidation _____

If answer is "no," list the owners and tract descriptions which have actually been consolidated. (Use reverse side of this form if necessary.) _____

No allowable will be assigned to the well until all interests have been consolidated (by communitization, unitization, forced-pooling, or otherwise) or until a non-standard unit, eliminating such interests, has been approved by the Commission.

RECEIVED

MAY 15 1978
U.S. GEOLOGICAL SURVEY
ARTESIA, NEW MEXICO



CERTIFICATION

I hereby certify that the information contained herein is true and complete to the best of my knowledge and belief.

Paul Slayton

Name

Paul Slayton

Position

Operator

Company

Date

May 10, 1978

I hereby certify that the well location shown on this plat was plotted from field notes of actual surveys made by me or under my supervision, and that the same is true and correct to the best of my knowledge and belief.

Date Surveyed

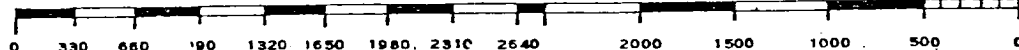
May 8, 1978

Registered Professional Engineer and/or Land Surveyor

Charles J. O'Meara Jr.

Certificate No.

N.M. #3954



RECEIVED

MAY 15 1978

U.S. GEOLOGICAL SURVEY
ARTESIA, NEW MEXICO

PAUL SLAYTON

No. 1 Union
660' FNL & 330' FWL, Sec. 14, T11S-R26E
Chaves County, New Mexico

MULTI-POINT SURFACE USE AND OPERATIONS PLAN

1. Attached maps:
 - a) Topographic map showing detail of abandoned and plugged oil wells.
 - b) Land plat showing lease ownership and all existing wells or known proposed wells in the area.
 - c) County road map showing all access roads to area.
2. Planned access roads:

None. All roads are presently existing.
3. Existing wells:

There are no existing wells except old plugged and abandoned wells.
4. Location of production facilities:

Production facilities will be minimum if we encounter oil. As shown on attached location diagram, no facilities (tanks, treaters, lease flow lines, etc.) are believed necessary.
5. Location of water supply:

Small amounts of water will be trucked from private sources on existing roads. Cable tool requirements are very small.
6. Source of construction materials:

None required.
7. Method of handling waste disposal:

Cuttings and small amounts of cable tool fluids will be contained in a small slush pit. After drilling operations are completed these will be dried and buried along with minor solid waste. Loose trash will be confined in a barrel and later removed to an approved dump.
8. Ancillary facilities:

None.
9. Well site layout:

See attached diagram.
10. Plans for restoration of surface:

Cut, dry and level slush pit. Surface is flat dry dirt. Will restore to present condition. Loose trash will be hauled away.

PAUL SLAYTON No. 1 Union, 14-11S-26E

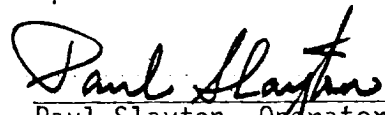
12. Operator's representative:

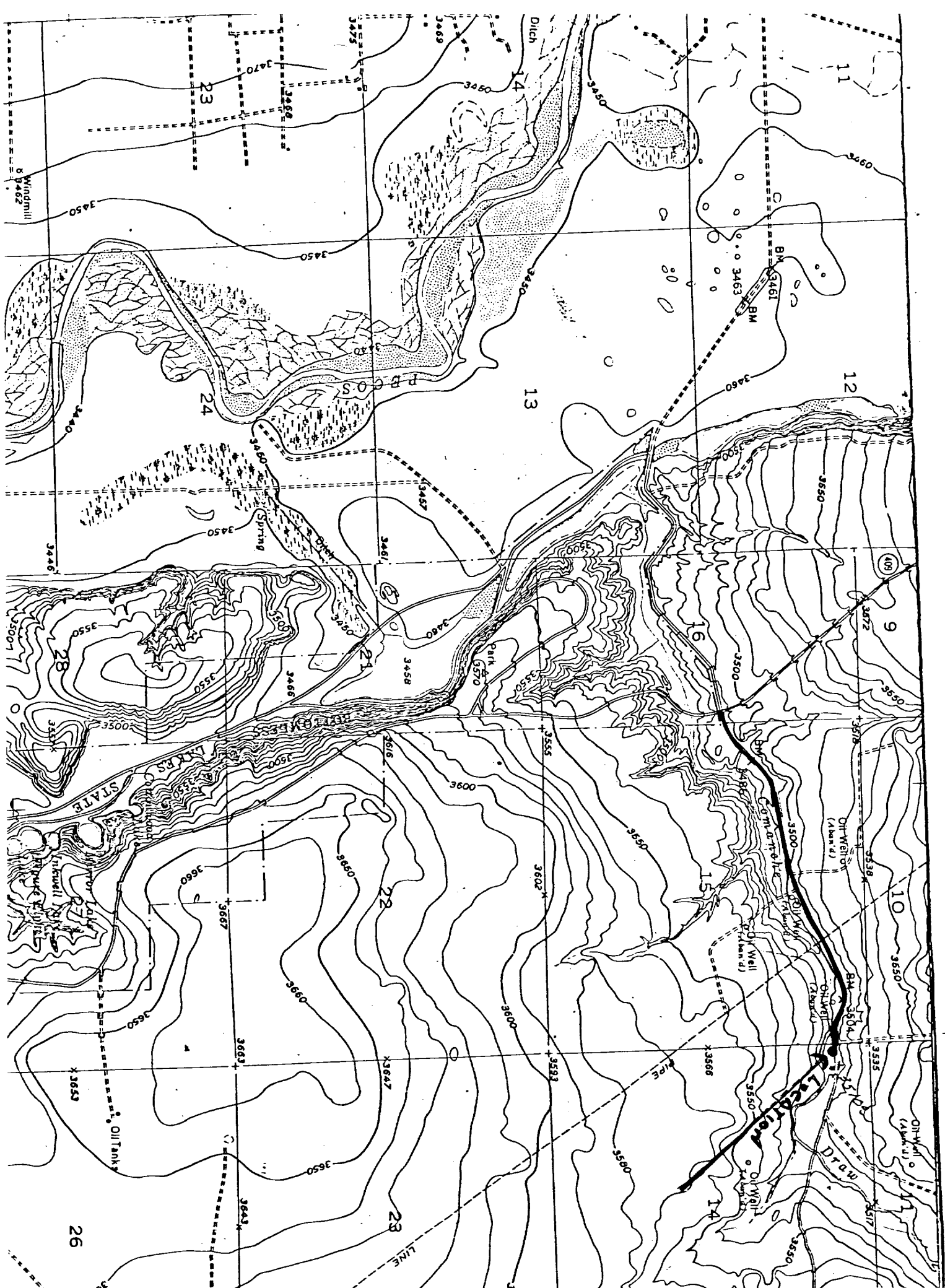
Paul Slayton
505-623-7184

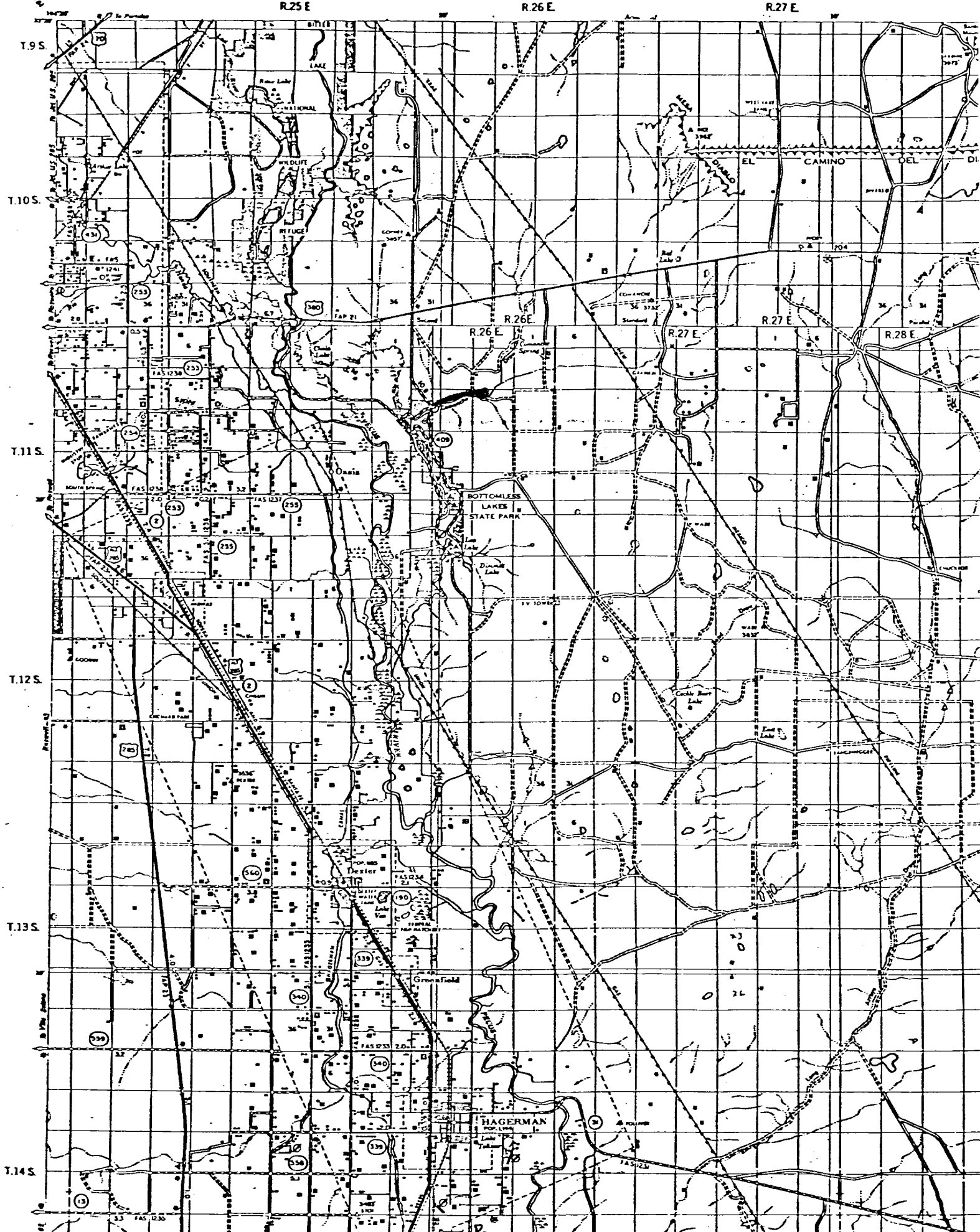
13. Certification:

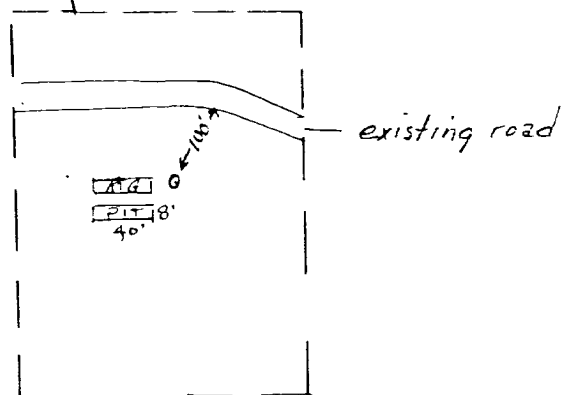
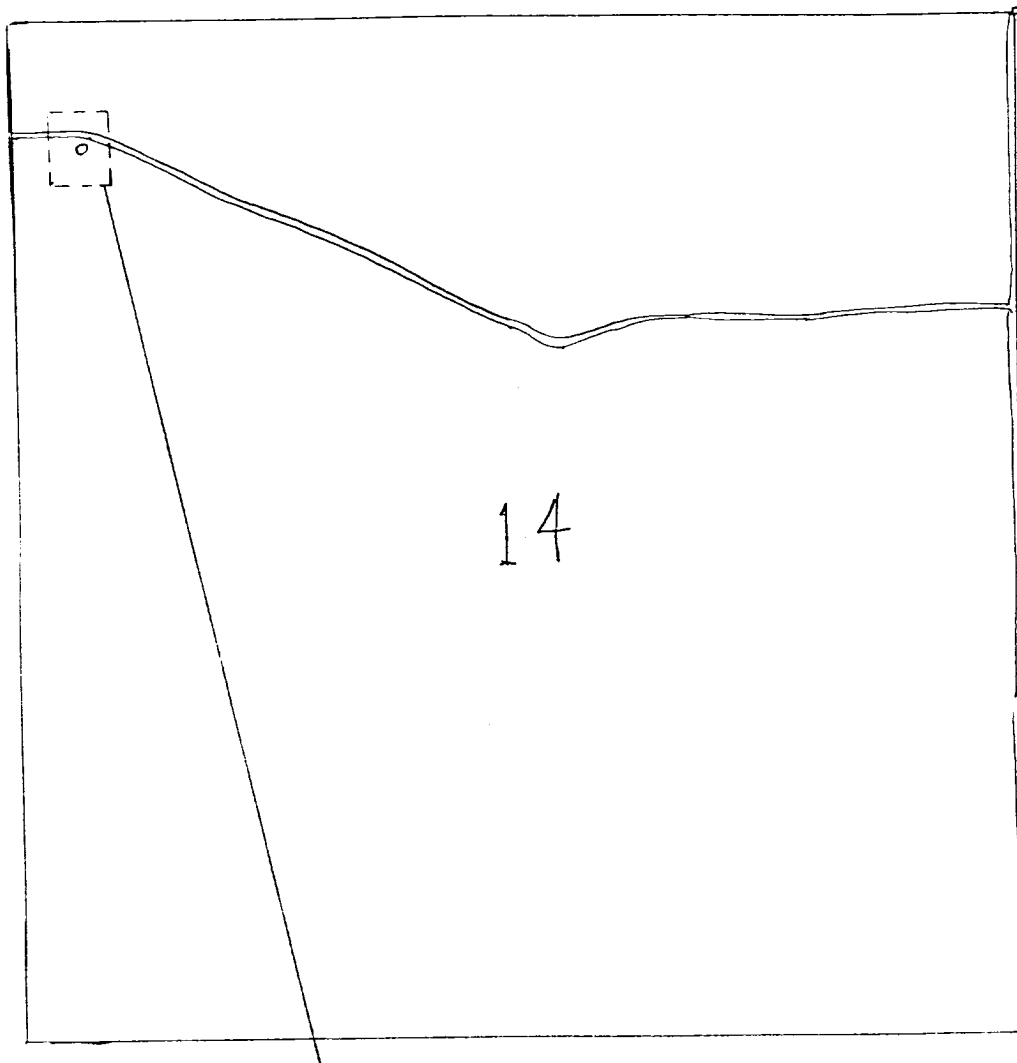
I hereby certify that I, or persons under my direct supervision, have inspected the proposed drillsite and access route; that I am familiar with the conditions which presently exist; that the statements made in this plan are, to the best of my knowledge, true and correct; and, that the work associated with the operations proposed herein will be performed by Paul Slayton and his contractors and sub-contractors in conformity with this plan and the terms and conditions under which it is approved.

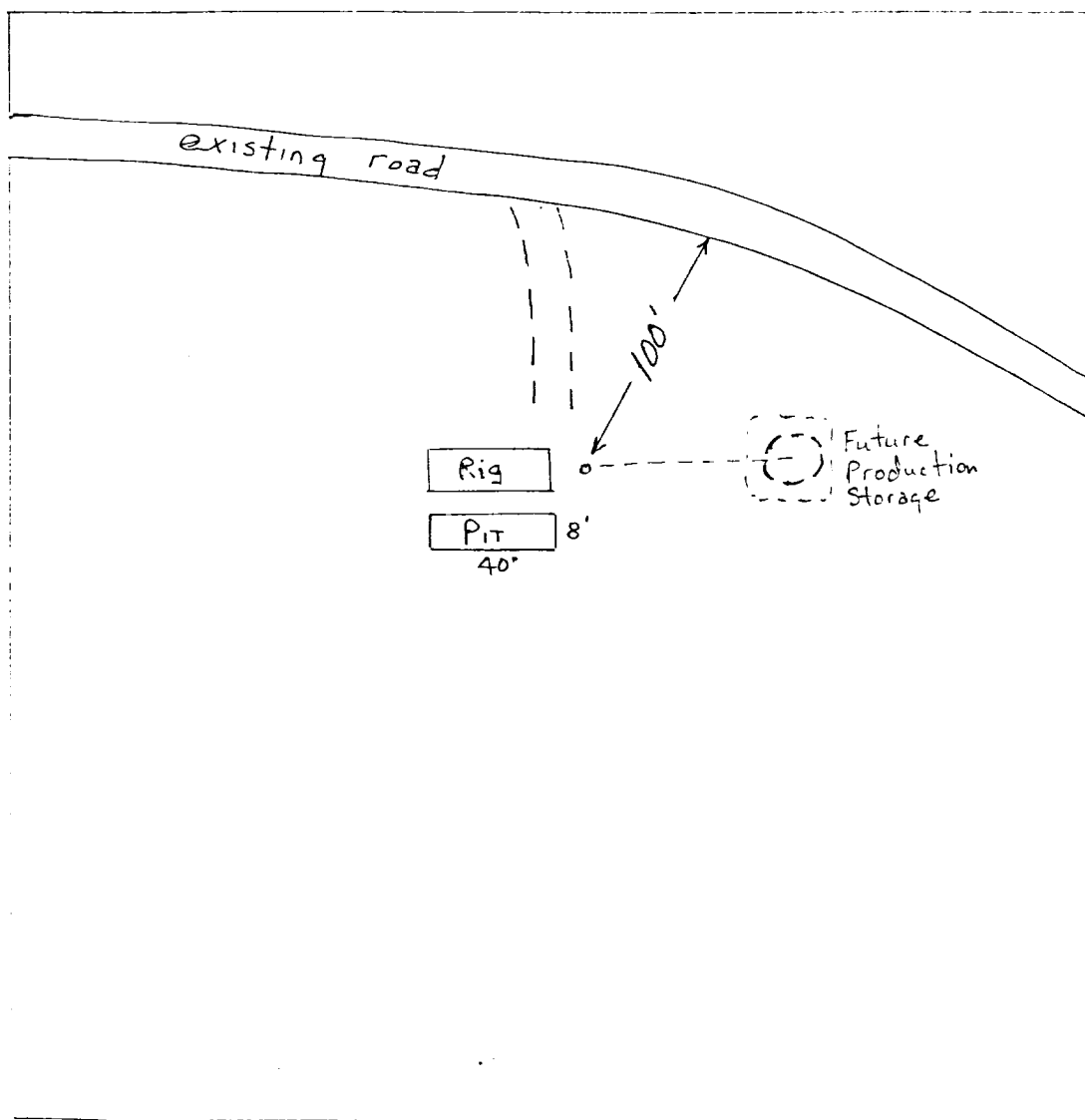
May 10, 1978


Paul Slayton, Operator









Surface utilization plat

Slayton #1 Union
14-115-26E
Chaves Co., NM
NM-14760