

N MEXICO OIL CONSERVATION COMMISS
WELL LOCATION AND ACREAGE DEDICATION PLAT

Form O-102
 Supersedes O-128
 Effective 1-1-65

All distances must be from the outer boundaries of the Section

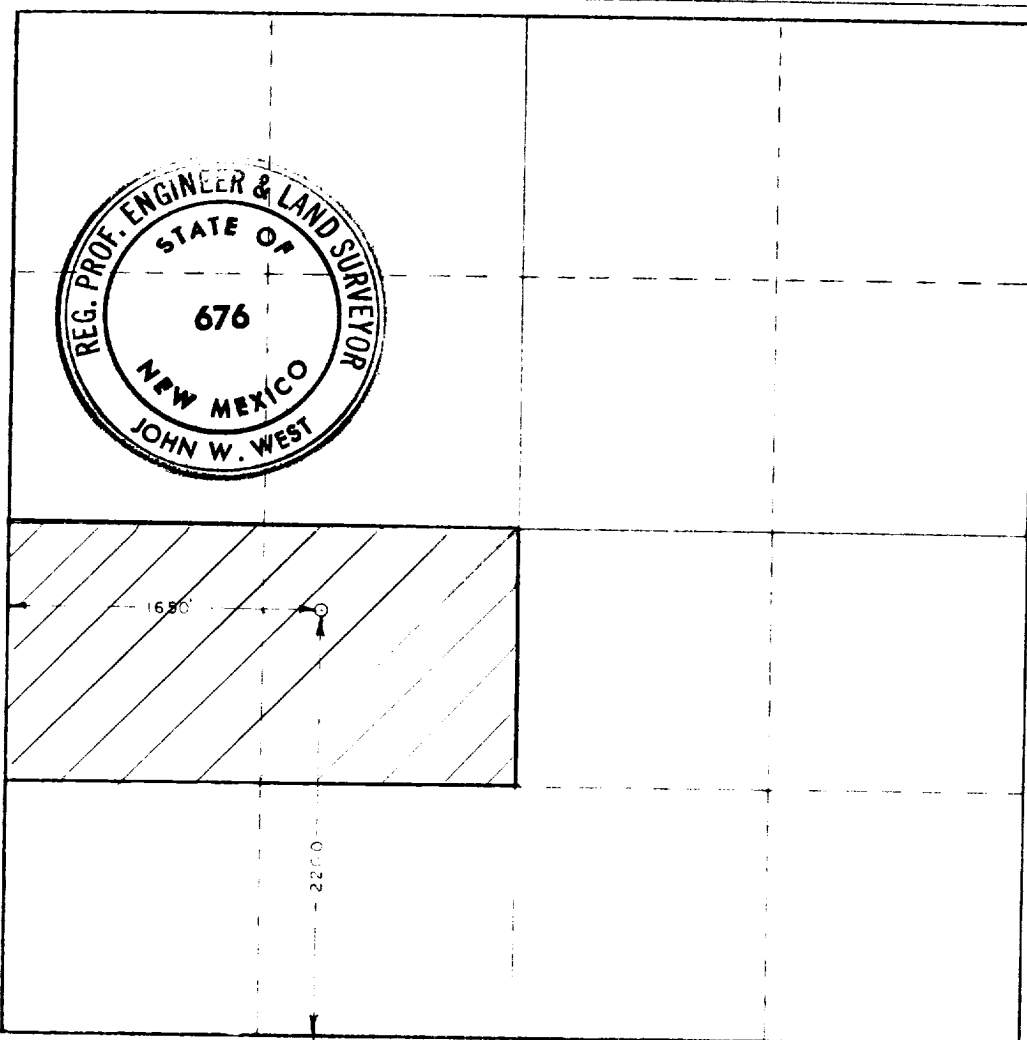
Name of Owner Williamson & Williamson			Lease Plains State			Well No. 1		
Section K	Township 16	Range 11 South	Meridian 28 East	County Chaves				
Distance from Section Corner 2200		Direction South	Distance from Section Corner 1650		Direction West			
Dedicated Acreage 3676.0		Description of Well DEEP			Distance from Section Corner 2200			

1. Outline the acreage dedicated to the subject well by colored pencil or hatchure marks on the plat below.
2. If more than one lease is dedicated to the well, outline each and identify the ownership thereof (both as to working interest and royalty).
3. If more than one lease of different ownership is dedicated to the well, have the interests of all owners been consolidated by communitization, unitization, force-pooling, etc?

Yes ☐ No ☒ If answer is "yes," type of consolidation _____

If answer is "no," list the owners and tract descriptions which have actually been consolidated. (Use reverse side of this form if necessary.) _____

No allowable will be assigned to the well until all interests have been consolidated (by communitization, unitization, forced-pooling, or otherwise) or until a non-standard unit, eliminating such interests, has been approved by the Commission.



CERTIFICATION

I hereby certify that the information contained herein is true and complete to the best of my knowledge and belief.

Name **RALPH E. W. [Signature]**
 Position **PLANNING**
 Company **[Signature]**
 Date **AUGUST 28, 1978**

I hereby certify that the well location shown on this plat was plotted from field notes of actual surveys made by me or under my supervision and that the same is true and correct to the best of my knowledge and belief.

August 25, 1978

Registered Professional Engineer and Land Surveyor

[Signature]

Certificate No. **John W. West** **676**

Ronald J. Eidson **3239**

15 160 170 180 190 200 210 220 230 240 250 260 270 280 290 300 310 320 330 340 350 360 370 380 390 400 410 420 430 440 450 460 470 480 490 500 510 520 530 540 550 560 570 580 590 600 610 620 630 640 650 660 670 680 690 700 710 720 730 740 750 760 770 780 790 800 810 820 830 840 850 860 870 880 890 900 910 920 930 940 950 960 970 980 990 1000

RECEIVED

NOV 8 1978

COMM. ON GOV. & ADMIN.
U.S. HOUSE OF REPRESENTATIVES