

NO. OF COPIES RECEIVED	5
DISTRIBUTION	
SANTA FE	
FILE	✓
U.S.G.S.	2
LAND OFFICE	
OPERATOR	1

W MEXICO OIL CONSERVATION COMMISSION

RECEIVED

JUL 20 1979

O. C. C.
ARTERIA OFFICE

30-005-60581

Form C-101
Revised 1-1-65

5A. Indicate Type of Lease

STATE ☐ FEE ☒

5. State Oil & Gas Lease No.

7. Unit Agreement Name

8. Farm or Lease Name

Union Happy

9. Well No.

1

10. Field and Pool, or Wildcat

Wildcat SA

12. County

Chaves

19. Proposed Depth

2800'

19A. Formation

San Andres

20. Rotary or C.T.

Rotary

21. Elevations (Show whether DF, RT, etc.)

4058' GL

21A. Kind & Status Plug. Bond

Blanket

21B. Drilling Contractor

LaRue Drilling Co.

22. Approx. Date Work will start

As soon as approved

PROPOSED CASING AND CEMENT PROGRAM

SIZE OF HOLE	SIZE OF CASING	WEIGHT PER FOOT	SETTING DEPTH	SACKS OF CEMENT	EST. TOP
12 1/4	8-5/8"	#24	250'	200	Circ. to top
7-7/8	4 1/2"	#10.5	2800'	200	1900

Adequate blowout prevention equipment will be utilized

APPROVAL AND
FOR 90 DAYS UNLESS
DRILLING COMMENCED,
EXPIRES 10-24-79

IN ABOVE SPACE DESCRIBE PROPOSED PROGRAM: IF PROPOSAL IS TO DEEPEN OR PLUG BACK, GIVE DATA ON PRESENT PRODUCTIVE ZONE AND PROPOSED NEW PRODUCTIVE ZONE. GIVE BLOWOUT PREVENTER PROGRAM, IF ANY.

hereby certify that the information above is true and complete to the best of my knowledge and belief.

Signed Ralph Nix Title Owner Date July 19, 1979

(This space for State Use)

APPROVED BY W. A. Gressett TITLE SUPERVISOR, DISTRICT II DATE JUL 24 1979

CONDITIONS OF APPROVAL, IF ANY:

NEW MEXICO OIL CONSERVATION COMMISSION
WELL LOCATION AND ACREAGE DEDICATION PLAT

Form C-102
Supersedes C-128
Effective 1-1-65

All distances must be from the outer boundaries of the Section.

Operator RALPH NIX		Lease UNION-HAPPY			Well No. 1
Unit Letter O	Section 1	Township 8 SOUTH	Range 28 EAST	County CHAVES	
Actual Footage Location of Well: 660 feet from the SOUTH line and 1980 feet from the EAST line					
Ground Level Elev. 4058	Producing Formation San Andres		Pool Wildcat	Dedicated Acreage 40 Acres	

1. Outline the acreage dedicated to the subject well by colored pencil or hachure marks on the plat below.
2. If more than one lease is dedicated to the well, outline each and identify the ownership thereof (both as to working interest and royalty).
3. If more than one lease of different ownership is dedicated to the well, have the interests of all owners been consolidated by communitization, unitization, force-pooling, etc?

RECEIVED

JUL 20 1979

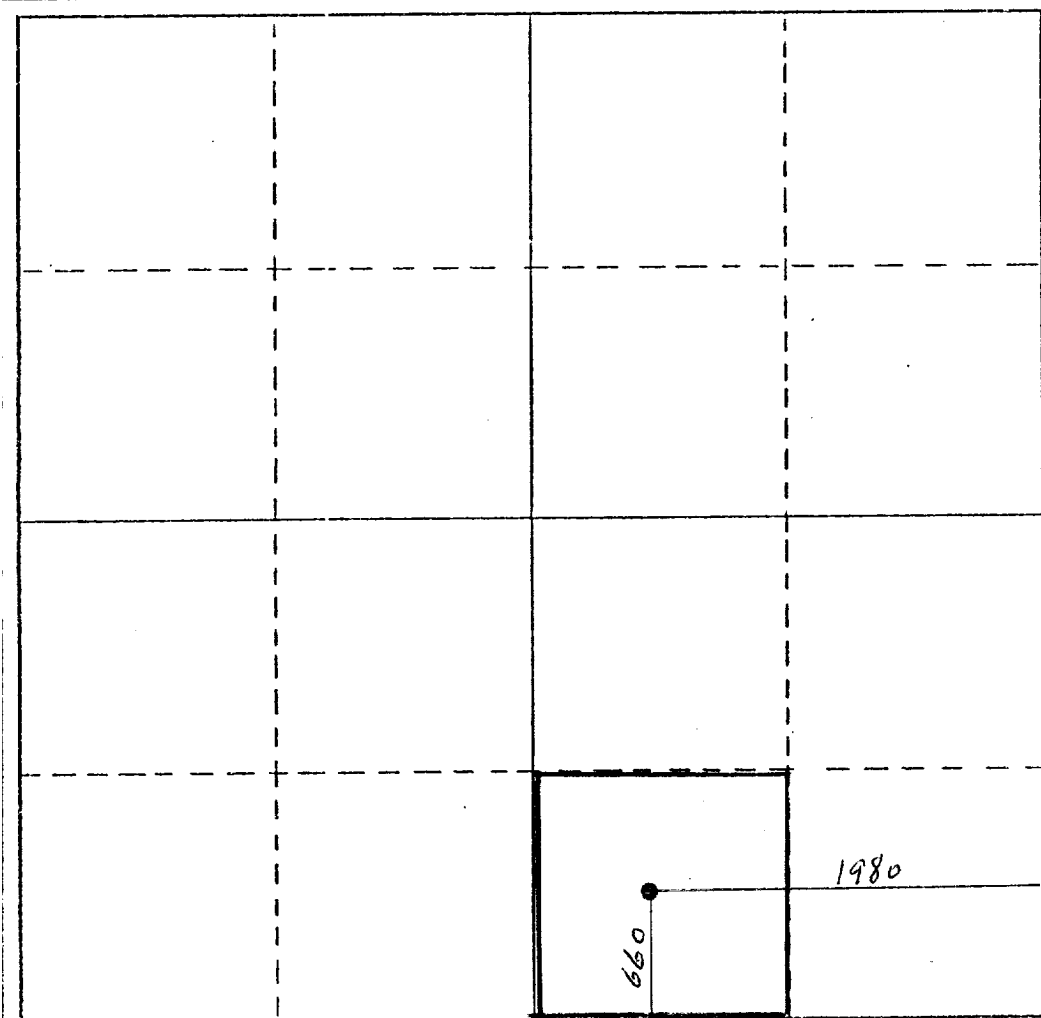
☐ Yes ☐ No If answer is "yes," type of consolidation _____

O. C. C.

ARTESIA, OFFICE

If answer is "no," list the owners and tract descriptions which have actually been consolidated. (Use reverse side of this form if necessary.) _____

No allowable will be assigned to the well until all interests have been consolidated (by communitization, unitization, forced-pooling, or otherwise) or until a non-standard unit, eliminating such interests, has been approved by the Commission.



CERTIFICATION

I hereby certify that the information contained herein is true and complete to the best of my knowledge and belief.

Ralph Nix

Name

Position

Owner

Company

Ralph Nix Oil Co.

Date

July 19, 1979

I hereby certify that the well location shown on this plat was plotted from field notes of actual surveys made by me or under my supervision, and that the same is true and correct to the best of my knowledge and belief.

Date Surveyed

JULY 13, 1979

Registered Professional Engineer and/or Land Surveyor

Jana Mathias

Certificate No.

1502

0 330 660 990 1320 1650 1980 2310 2640 2970 3300 3630 3960 4290 4620 4950 5280 5610 5940 6270 6600