

UNITED STATES  
DEPARTMENT OF THE INTERIOR  
GEOLOGICAL SURVEY

## APPLICATION FOR PERMIT TO DRILL, DEEPEN, OR PLUG BACK

## 1a. TYPE OF WORK

DRILL ☒DEEPEN ☐PLUG BACK ☐

## b. TYPE OF WELL

OIL  
WELL ☐GAS  
WELL ☒

OTHER

SINGLE  
ZONE ☒MULTIPLE  
ZONE ☐

## 2. NAME OF OPERATOR

Yates Petroleum Corporation

## 3. ADDRESS OF OPERATOR

207 South 4th Street, Artesia, New Mexico 88311

## 4. LOCATION OF WELL (Report location clearly and in accordance with any State Requirements.)\*

At surface

At proposed prod. zone 660' FNL & 1980' FWL  
710'

## 14. DISTANCE IN MILES AND DIRECTION FROM NEAREST TOWN OR POST OFFICE\*

Approx. 21 miles N NE of Roswell, New Mexico

O. C. C.  
ARTESIA, OFFICE

## 15. DISTANCE FROM PROPOSED\*

LOCATION TO NEAREST  
PROPERTY OR LEASE LINE, FT.  
(Also to nearest drlg. unit line, if any)

660'

## 16. NO. OF ACRES IN LEASE

480

17. NO. OF ACRES ASSIGNED  
TO THIS WELL

160

18. DISTANCE FROM PROPOSED LOCATION\*  
TO NEAREST WELL, DRILLING, COMPLETED,  
OR APPLIED FOR, ON THIS LEASE, FT.

.8 mile

## 19. PROPOSED DEPTH

Approx. 4300'

## 20. ROTARY OR CABLE TOOLS

Rotary

## 21. ELEVATIONS (Show whether DF, RT, GR, etc.)

3612' GR

## 22. APPROX. DATE WORK WILL START\*

As soon as approved  
Expiring Lease

## 23.

## PROPOSED CASING AND CEMENTING PROGRAM

SIZE OF HOLE	SIZE OF CASING	WEIGHT PER FOOT	SETTING DEPTH	QUANTITY OF CEMENT
15"	10 3/4"	32.7# J-55	Approx. 400'	Circulate
9 5/8"	7"	23# J-55	Approx. 1450'	Circulate
6 1/4"	4 1/2"	9.5# J-55	TD	

We propose to drill and test the Abo and intermediate formations. Approximately 400' of surface casing will be set and cement circulated. Casing will be set 100' below the water zone. If commercial, 4 1/2" production casing will be run.

MUD PROGRAM: FW gel and LCM to 400', native to 1450'  
Flosal-driskak KCL to TD. MW 8.7 - 9.0, Vis 34-39, W 14-7

BOP PROGRAM: BOP's will be installed on 7" casing and tested daily.

*gas is not dedicated*

IN ABOVE SPACE DESCRIBE PROPOSED PROGRAM: If proposal is to deepen or plug back, give data on present productive zone and proposed new productive zone. If proposal is to drill or deepen directionally, give pertinent data on subsurface locations and measured and true vertical depths. Give blowout preventer program, if any.

## 24.

SIGNED

*E. E. ...*

TITLE

Engineer

DATE

Sept. 13, 1979

(This space for Federal or State office use)

PERMIT NO.

APPROVAL DATE

9-20-79

APPROVED BY

TITLE

DATE

CONDITIONS OF APPROVAL, IF ANY:

NEW MEXICO OIL CONSERVATION COMMISSION  
WELL LOCATION AND ACREAGE DEDICATION PLAT

Form C-102  
Supersedes C-128  
Effective 1-1-65

All distances must be from the outer boundaries of the Section.

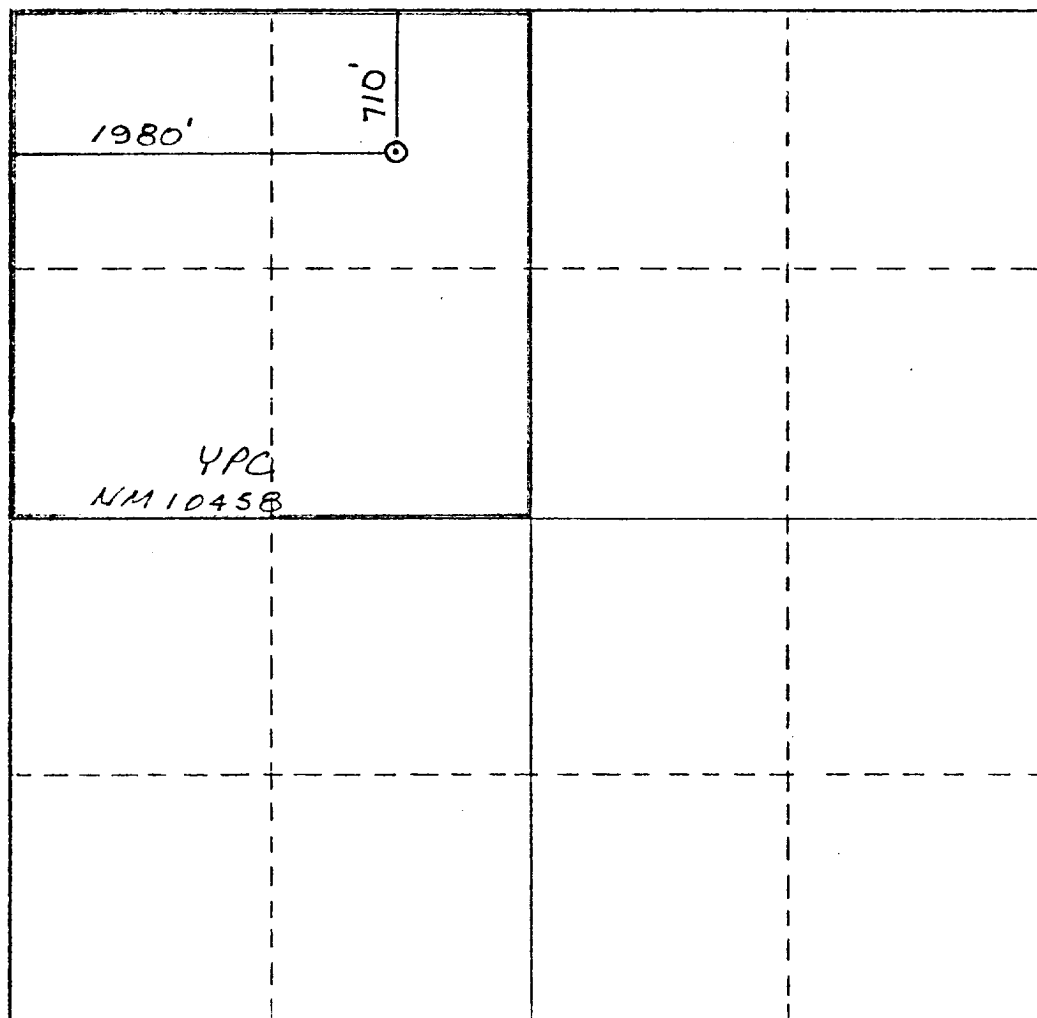
Operator <b>YATES PETROLEUM CORPORATION</b>			Lease <b>DUNCAN "LH" FEDERAL</b>		Well No. <b>1</b>
Unit Letter <b>C</b>	Section <b>3</b>	Township <b>8 SOUTH</b>	Range <b>25 EAST</b>	County <b>CHAVES</b>	
Actual Footage Location of Well: <b>710</b> feet from the <b>NORTH</b> line and <b>1980</b> feet from the <b>WEST</b> line					
Ground Level Elev. <b>3612.5</b>	Producing Formation <b>ABO</b>	Pool <b>WILDCAT</b>	Dedicated Acreage: <b>160</b> Acres		

- Outline the acreage dedicated to the subject well by colored pencil or machine mark on the plat below.
- If more than one lease is dedicated to the well, outline each and identify the ownership thereof (both as to working interest and royalty).
- If more than one lease of different ownership is dedicated to the well, outline each and identify the ownership thereof. If all owners have been consolidated by communitization, unitization, force-pooling, etc?

☐ Yes ☐ No If answer is "yes," type of consolidation \_\_\_\_\_

If answer is "no," list the owners and tract descriptions which have actually been consolidated. (Use reverse side of this form if necessary.) \_\_\_\_\_

No allowable will be assigned to the well until all interests have been consolidated (by communitization, unitization, forced-pooling, or otherwise) or until a non-standard unit, eliminating such interests, has been approved by the Commission.



CERTIFICATION

I hereby certify that the information contained herein is true and complete to the best of my knowledge and belief.

*Gliserio Rodriguez*

Name  
**GLISERIO RODRIGUEZ**

Position  
**GEOGRAPHER**

Company  
**YATES PETROLEUM CORP.**

Date  
**9-19-79**

I hereby certify that the well location shown on this plat was plotted from field notes of actual surveys made by me or under my supervision, and that the same is true and correct to the best of my knowledge and belief.

**REFER TO ORIGINAL PLAT**

Date Surveyed

Registered Professional Engineer and/or Land Surveyor

Certificate No.

NEW MEXICO OIL CONSERVATION COMMISSION  
WELL LOCATION AND ACREAGE DEDICATION PLAT

Form C-102  
Supersedes C-128  
Effective 1-1-65

All distances must be from the outer boundaries of the Section.

Operator <b>YATES PETROLEUM CORPORATION</b>			Lease <b>Duncan LH Federal</b>		Well No. <b>1</b>
Unit Letter <b>C</b>	Section <b>3</b>	Township <b>8 South</b>	Range <b>25 East</b>	County <b>Chaves</b>	
Actual Footage Location of Well: <b>660</b> feet from the <b>North</b> line and <b>1980</b> feet from the <b>West</b> line					
Ground Level Elev. <b>3612</b>	Producing Formation <b>AGD</b>		Pool <b>WILDCAT</b>	Dedicated Acreage: <b>160</b> Acres	

1. Outline the acreage dedicated to the subject well by colored pencil or hachure marks on the plat below.
2. If more than one lease is dedicated to the well, outline each and identify the ownership thereof (both as to working interest and royalty).
3. If more than one lease of different ownership is dedicated to the well, have the interests of all owners been consolidated by communitization, unitization, force-pooling, etc?

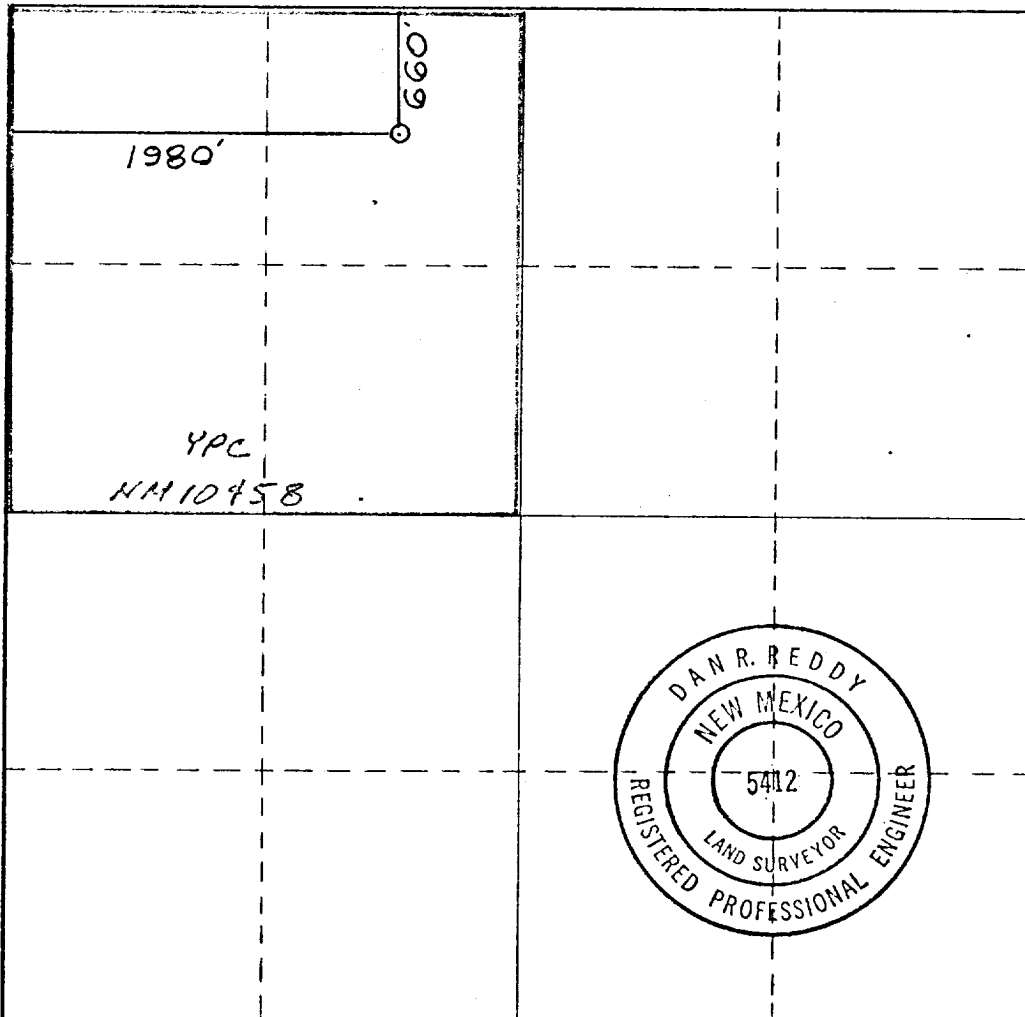
SEP 28 1979

O. C. C.

☐ Yes ☐ No If answer is "yes," type of **ARTS AND MINES OFFICE**

If answer is "no," list the owners and tract descriptions which have actually been consolidated. (Use reverse side of this form if necessary.)

No allowable will be assigned to the well until all interests have been consolidated (by communitization, unitization, forced-pooling, or otherwise) or until a non-standard unit, eliminating such interests, has been approved by the Commission.



CERTIFICATION

I hereby certify that the information contained herein is true and complete to the best of my knowledge and belief.

*Gliserio Rodriguez*

Name

*GLISERIO RODRIGUEZ*

Position

*GEOGRAPHER*

Company

*YATES PETROLEUM CORP*

Date

*9-13-79*

I hereby certify that the well location shown on this plat was plotted from field notes of actual surveys made by me or under my supervision, and that the same is true and correct to the best of my knowledge and belief.

Date Surveyed

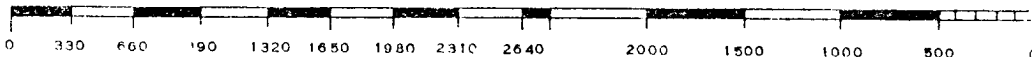
*Sept. 13, 1979*

Registered Professional Engineer and/or Land Surveyor

*Dan R. Reddy*

Certificate No.

**NMPE&LS #5412**





NO.C.D. COPY

# United States Department of the Interior

GEOLOGICAL SURVEY

P. O. Drawer U  
Artesia, New Mexico 88210

RECEIVED

SEP 28 1979

O. C. C.  
ARTESIA, OFFICE

September 20, 1979

Yates Petroleum Corporation  
207 South 4th Street  
Artesia, New Mexico 88210

Gentlemen:

YATES PETROLEUM CORPORATION  
Duncan "LH" Federal No. 1  
710 FNL 1980 FWL Sec. 3, T8S, R25E  
Chaves County Lease No. NM 10458

Above Data Required on Well Sign

Your APPLICATION FOR PERMIT TO DRILL the above-described well to a depth of 4,300 feet to test the Abo formation is hereby approved subject to compliance with the OIL AND GAS OPERATING REGULATIONS (30 CFR 221) and the following conditions:

1. Drilling operations authorized are subject to compliance with the GENERAL REQUIREMENTS FOR OIL AND GAS OPERATIONS ON FEDERAL LEASES, dated July 1, 1978.
2. Prior to commencing construction of road, pad, or other associated developments, operator will provide the dirt contractor with a copy of the SURFACE USE PLAN and this approval including the GENERAL REQUIREMENTS.
3. Submit a Daily Report of Operations from spud date until the Well Completion Report (form 9-330) is filed. The progress report should be not less than 8" x 5" in size and each page should identify the well.
4. All permanent above-ground structures and equipment shall be painted in accordance with the attached Painting Requirements. The color used should simulate Sandstone Brown (Federal Standard No. 595A, color 20318 or 30318).
5. Cement behind the 10-3/4" and 7" casing must be circulated.
6. Please have anyone contacting the Survey in regard to this well to identify the well with all of the information required above for the well sign.

Sincerely yours,

Albert R. Stall  
Acting District Engineer



Yates Petroleum Corporation  
Duncan "LH" Federal #1  
710 660' FNL and 1980' FWL  
Section 3 - T8S - R25E  
Chaves County, New Mexico

In conjunction with Form 9-331C, Application for Permit to Drill subject well, Yates Petroleum Corporation submits the following ten items of pertinent information in accordance with USGS requirements:

1. The geologic surface formation is quaternary alluvium.
2. The estimate tops of geologic markers are as follows:  
  
San Andres 163'  
Glorieta 1188'  
Abo 3490'  
Wolfcamp 4258'  
T.D. 4300'
3. The estimated depths at which anticipated water, oil, or gas formations are expected to be encountered:  
  
Water: Approximately 60'-120'  
  
Oil or Gas: Abo 3500'
4. Proposed Casing Program: See Form 9-331C.
5. Pressure Control Equipment: See Form 9-331C and Exhibit B.
6. Mud Program: See Form 9-331C.
7. Auxiliary Equipment: Kelly Cock; pit level indicators and flow sensor equipment; sub with full-opening valve on floor, drill pipe connection.
8. Testing, Logging and Coring Program:  
  
Samples: Surface casing to T.D.  
DST's: As Warranted  
Logging: Intermediate casing to T.D.  
Coring: CNL-FDC T.D. to casing with GR-CNL on to surface and  
DLL from T.D. to casing with selected min. R.O.  
x
9. No abnormal pressures or temperatures are anticipated.
10. Anticipated starting date: As soon as possible after approval  
Lease expiring 9/30/79.

MULTI-POINT SURFACE USE AND OPERATIONS PLAN

Yates Petroleum Corporation

Duncan "LH" Federal #1

Section 3 - T8S - R25E

710 ~~660~~' FNL and 1980' FWL  
(Exploratory Well)

RECEIVED

SEP 1973

This plan is submitted with Form 9-331C, Application for Permit to Drill, covering the above described well. The purpose of this plan is to describe the location of the proposed well, the proposed construction activities and operations plan, the magnitude of surface disturbance involved, and the procedures to be followed in rehabilitating the surface after completion of the operations, so that a complete appraisal can be made of the environmental effect associated with the operation.

1. EXISTING ROADS.

Exhibit A is a portion of a county map showing the well and roads in the vicinity of the proposed location. The proposed wellsite is located approximately 21 miles NNE of Roswell, New Mexico and the access route to the location is indicated in red and green on Exhibit A.

DIRECTIONS:

1. Proceed ~~east~~ <sup>North</sup> from Roswell on Highway 285 for a distance of approximately 13 miles.
2. Turn east for approximately 2½ miles and continue NE for 6 miles. Turn east onto the pipeline road, continue for 1.2 miles. The location will be on the south side of the pipeline.

2. PLANNED ACCESS ROAD.

- A. Then proposed new access will be approximately 200' in length from point of origin to the south edge of the drilling pad. The road will lie in a north-to-south direction.
- B. The new road will be 12 feet in width (driving surface) and will ramp over pipeline at least 24".
- C. The new road will be bladed and crowned, with drainage on one side. No turnouts will be built.
- D. The route of the road is visible.

3. LOCATION OF EXISTING WELL.

- A. There is drilling activity within a one-mile radius of the wellsite. Our Federal HY #2 and Williamson "LC" #1.

4. LOCATION OF EXISTING AND/OR PROPOSED FACILITIES.

- A. There are no production facilities on this lease at the present time.
- B. In the event that the well is productive, the necessary production facilities will be installed on the drilling pad. If the well is productive oil, a gas or diesel self-contained unit will be used to provide the necessary power. No power will be required if the well is productive of gas.

5. LOCATION AND TYPE OF WATER SUPPLY.

- A. It is planned to drill the proposed well with a fresh water system. The water will be obtained from commercial sources and will be hauled to the location by truck over the existing and proposed roads shown in Exhibit A.

6. SOURCE OF CONSTRUCTION MATERIALS.

- A. There is no existing pit of construction material so none will be used.

7. METHODS OF HANDLING WASTE DISPOSAL.

- A. Drill cuttings will be disposed of in the reserve pits.
- B. Drilling fluids will be allowed to evaporate in the reserve pits until the pits are dry.
- C. Water produced during operations will be collected in tanks until hauled to an approved disposal system, or separate disposal application will be submitted to the USGS for appropriate approval.
- D. Oil produced during operation will be stored in tanks until sold.
- E. Current laws and regulations pertaining to the disposal of human waste will be complied with.
- F. Trash, waste paper, garbage and junk will be buried in a separate trash pit and covered with a minimum of 24 inches dirt. All waste material will be contained of prevent scattering by the wind.
- G. All trash and debris will be buried or removed from the wellsite within 30 days after finishing drilling and/or completion operations.

8. ANCILLARY FACILITIES.

- A. None required.

9. WELLSITE LAYOUT.

- A. Exhibit C shows the relative location and dimensions of the well pad, the reserve pits, etc.
- B. The location surface is sloping. Minor cut and fill will be required on location.
- C. The reserve pits will be plastic lined.
- D. A 400' X 400' area has been staked and flagged.

10. PLANS FOR RESTORATION OF THE SURFACE.

- A. After finishing drilling and/or completion operations, all equipment and other material not needed for further operations will be removed. The location will be cleaned of all trash and junk to leave the wellsite in as aesthetically pleasing a condition as possible.

- B. Unguarded pits, if any, containing fluids will be fenced until they have dried and leveled.
- C. If the proposed well is non-productive, all rehabilitation and/or vegetation requirements of the BLM and the USGS will be complied with and will be accomplished as expeditiously as possible. All pits will be filled leveled within 90 days after abandonment.

11. OTHER INFORMATION.

- A. Topography: The land surface in the vicinity of the wellsite consists of sloping dunes. The immediate area of the wellsite is discussed above in paragraph 9B.
- B. Flora and Fauna: The vegetation cover on wellsite consists of mesquite and miscellaneous desert growth. No wildlife was observed, but the wildlife in the area probably includes those typical of semi-arid desert land. The area is used for cattle grazing.
- C. The Pecos River is approximately two miles SE.
- D. There are no inhabited dwellings in the vicinity of the proposed well.
- E. Surface Ownership: The wellsite is on federal surface.
- F. There is no evidence of any archeological, historical or cultural sites in the area.

12. OPERATOR'S REPRESENTATIVE.

- A. The field representative responsible for assuring compliance with the approved surface use plan is:

Gliserio "Rod" Rodriguez  
Yates Petroleum Corporation  
207 South 4th Street  
Artesia, New Mexico 88210  
(505) 746-3558

13. CERTIFICATION.

I hereby certify that I, or persons under my direct supervision, have inspected the proposed drillsite and access route, that I am familiar with the conditions which presently exist; that the statements made in this plan are to the best of my knowledge, true and correct; and, that the work associated with the operations proposed herein will be performed by Yates Petroleum Company and its contractors and subcontractors in conformity with this plan and the terms and conditions under which it is approved.

9-13-79

Date

*Gliserio Rodriguez*

Gliserio Rodriguez, Geographer

