

NO. OF COPIES RECEIVED	5
DISTRIBUTION	
SANTA FE	1
FILE	1 ✓
U.S.G.S.	2
LAND OFFICE	
OPERATOR	1

NEW MEXICO OIL CONSERVATION COMMISSION

RECEIVED

30-005-60605

Form C-101
Revised 1-1-65

OCT 18 1979

O. C. C.
ARTESIA, OFFICE

5A. Indicate Type of Lease	
STATE <input type="checkbox"/>	FEE <input checked="" type="checkbox"/>

5. State Oil & Gas Lease No.

APPLICATION FOR PERMIT TO DRILL, DEEPEN, OR PLUG BACK

1a. Type of Work		7. Unit Agreement Name	
b. Type of Well OIL WELL <input checked="" type="checkbox"/> GAS WELL <input type="checkbox"/> OTHER <input type="checkbox"/>		8. Farm or Lease Name Union Kerry	
2. Name of Operator Ralph Nix ✓		9. Well No. 1	
3. Address of Operator P. O. Box 617, Artesia, New Mexico 88210		10. Field and Pool, or Wildcat Undesignated, SA	
4. Location of Well UNIT LETTER H LOCATED 2310 FEET FROM THE North LINE AND 990 FEET FROM THE East LINE OF SEC. 1 TWP. 8-S RGE. 28-E NMPM		12. County Chaves	
19. Proposed Depth 2800'		19A. Formation San Andres	20. Rotary or C.T. Rotary
21. Elevations (Show whether DF, RT, etc.) 4025' GL	21A. Kind & Status Plug. Bond Blanket	21B. Drilling Contractor LaRue Drilling Co	22. Approx. Date Work will start As soon as approved

23.

PROPOSED CASING AND CEMENT PROGRAM

SIZE OF HOLE	SIZE OF CASING	WEIGHT PER FOOT	SETTING DEPTH	SACKS OF CEMENT	EST. TOP
12 1/4"	8 5/8"	24#	250'	200	circ. to top
7 7/8"	4 1/2"	10.5#	2800'	200	1900'

Adequate blowout prevention equipment will be utilized.

APPROVAL VALID
FOR 90 DAYS UNLESS
DRILLING COMMENCED,

EXPIRES 1-19-80

IN ABOVE SPACE DESCRIBE PROPOSED PROGRAM: IF PROPOSAL IS TO DEEPEN OR PLUG BACK, GIVE DATA ON PRESENT PRODUCTIVE ZONE AND PROPOSED NEW PRODUCTIVE ZONE. GIVE BLOWOUT PREVENTER PROGRAM, IF ANY.

I hereby certify that the information above is true and complete to the best of my knowledge and belief.

Signed William T. McLean Title Operations Manager Date 10/17/79

(This space for State Use)

APPROVED BY W. A. Gressett TITLE SUPERVISOR, DISTRICT 12 DATE OCT 19 1979

CONDITIONS OF APPROVAL, IF ANY:

N: MEXICO OIL CONSERVATION COMMISSION
WELL LOCATION AND ACREAGE DEDICATION PLAT

Form C-102
Supersedes C-128
Effective 1-1-65

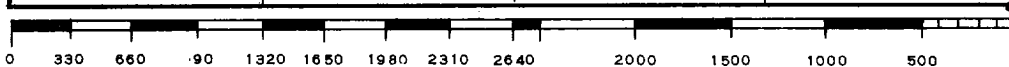
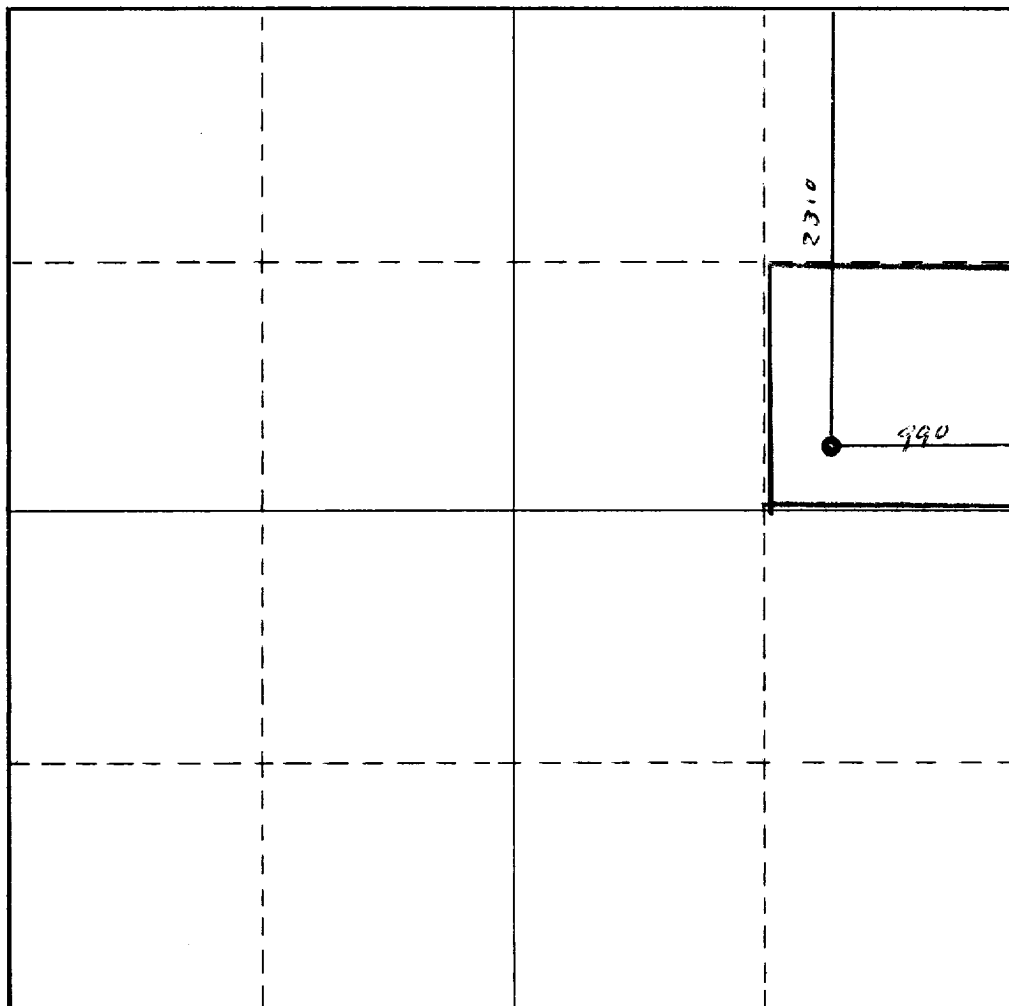
All distances must be from the outer boundaries of the Section.

Operator Ralph Nix		Lease Union Kerry		Well No. 1
Unit Letter H	Section 1	Township 8 South	Range 28 East	County Chaves
Actual Footage Location of Well:				
2310 feet from the North line and		990 feet from the East line		
Ground Level Elev. 4025	Producing Formation San Andres	Pool Undesignated	Dedicated Acreage: 40 Acres	

1. Outline the acreage dedicated to the subject well by colored pencil or hatchure marks on the plat below.
 2. If more than one lease is dedicated to the well, outline each and identify the ownership thereof (both as to working interest and royalty).
 3. If more than one lease of different ownership is dedicated to the well, have the interests of all owners been consolidated by communitization, unitization, force-pooling, etc?
- RECEIVED**
OCT 18 1979
O. C. C.
ARTESIA, OFFICE
- ☐ Yes ☐ No If answer is "yes," type of consolidation _____

If answer is "no," list the owners and tract descriptions which have actually been consolidated. (Use reverse side of this form if necessary.) _____

No allowable will be assigned to the well until all interests have been consolidated (by communitization, unitization, forced-pooling, or otherwise) or until a non-standard unit, eliminating such interests, has been approved by the Commission.



CERTIFICATION

I hereby certify that the information contained herein is true and complete to the best of my knowledge and belief.

Name William J. McMan
Position Operations Manager
Company Ralph Nix Oil
Date OCT 17 1979

I hereby certify that the well location shown on this plat was plotted from field notes of actual surveys made by me or under my supervision, and that the same is true and correct to the best of my knowledge and belief.

Date Surveyed October 11, 1979
Registered Professional Engineer and/or Land Surveyor
James A. Mathis Jr.
Certificate No. 1502