

RECEIVED

Form 9-331 C
(May 1963)

N.M.C.D. COPY

SUBMIT IN TRIPLICATE*
(Other instructions on reverse side)

Form approved
Budget Bureau No. 42 R1425

OCT 24 1979

UNITED STATES
DEPARTMENT OF THE INTERIOR

O. C. C.

GEOLOGICAL SURVEY

30-00560606

5. LEASE DESIGNATION AND SERIAL NO

NM 10593

6. IF INDIAN, ALLOTTEE OR TRIBE NAME

7. UNIT AGREEMENT NAME

8. FARM OR LEASE NAME

CHISUM FEDERAL

9. WELL NO.

10. FIELD AND POOL, OR WILDCAT

CHISUM-SAN ANDRES

11. SEC., T., R., M., OR BLK.
AND SURVEY OR AREA

SECTION 24-11S-27E

12. COUNTY OR PARISH

CHAVES

13. STATE

NM

22. APPROX. DATE WORK WILL START*

OCT 20 79

1A. TYPE OF WORK

DRILL ☒

DEEPEN ☐

PLUG BACK ☐

1B. TYPE OF WELL

OIL WELL ☒

GAS WELL ☐

OTHER ☐

SINGLE ZONE ☐

MULTIPLE ZONE ☐

2. NAME OF OPERATOR

FI-RO CORPORATION

3. ADDRESS OF OPERATOR

P.O. BOX 315 NATCHEZ, MS 39120

4. LOCATION OF WELL (Report location clearly and in accordance with any State requirements)

At surface

1660 ft FWL & 2980 ft FNL SECTION 24 T-11S R-27E

At proposed prod. zone

SAME

FSL

14. DISTANCE IN MILES AND DIRECTION FROM NEAREST TOWN OR POST OFFICE*

APPROX 24 MILES EAST OF ROSWELL NM.

15. DISTANCE FROM PROPOSED*

LOCATION TO NEAREST PROPERTY OR LEASE LINE, FT.
(Also to nearest drlg. unit line, if any)

340

16. NO. OF ACRES IN LEASE

1040

17. NO. OF ACRES ASSIGNED TO THIS WELL

40

18. DISTANCE FROM PROPOSED LOCATION*

TO NEAREST WELL, DRILLING COMPLETED, OR APPLIED FOR, ON THIS LEASE, FT.

2800 ft

19. PROPOSED DEPTH

2450

20. ROTARY OR CABLE TOOLS

C T

21. ELEVATIONS (Show whether DF, RT, GR, etc.)

3751.3 GR.

PROPOSED CASING AND CEMENTING PROGRAM

SIZE OF HOLE	SIZE OF CASING	WEIGHT PER FOOT	SETTING DEPTH	QUANTITY OF CEMENT
10	8 5/8	24	460	100 sks reg W/2%CaCl
8	5 1/2	15.50	2450	175 sks

WE PLAN TO DRILL TO 2450 WITH CABLE TOOLS TO TEST THE QUEEN AT APPROX 980 AND THE SAN ANDRES FROM APPROX 1400 to 2450 A 10 IN. HOLE WILL BE DRILLED TO ABOUT 450 AND A 5/8 WILL BE SET AND 100 SKS CEMENT CIRCULATED TO SURFACE FOR WATER SHUT OFF. AFTER 24HRS. BAIL HOLE DRY TO TEST FOR WATER SHUT OFF. THEN DRILL OUT WITH 8 IN. TO 2450 TO TEST THE QUEEN AND THE SAN ANDRES. IF SUFFICIENT OIL IS ENCOUNTERED, 5 1/2 CASING WILL BE SET AT 2450 AND CEMENTED WITH 175 SKS AND COMPLETION ATTEMPTED. AN 8 IN. CONTROL VALVE WILL BE USED WHILE DRILLING FROM 450 TO 2450. WE WILL DIG A 8X40X6ft DEEP PIT TO ALLOW BACK FILLING. NO ROAD CONSTRUCTION MATERIAL WILL BE USED FOR THE WELL TEST. WATER WILL BE PURCHASED FROM THE NEAREST COMMERCIAL SOURCE.

IN ABOVE SPACE DESCRIBE PROPOSED PROGRAM: If proposal is to deepen or plug back, give data on present productive zone and proposed new productive zone. If proposal is to drill or deepen directionally, give pertinent data on subsurface locations and measured and true vertical depths. Give blowout preventer program, if any

24.

SIGNED

Henry M. Wolf

TITLE

President

DATE

9-28-79

(This space for Federal or State office use)

PERMIT NO.

APPROVAL DATE

APPROVED BY

TITLE

DATE

CONDITIONS OF APPROVAL, IF ANY:

*See Instructions On Reverse Side

NEW MEXICO OIL CONSERVATION COMMISSION
WELL LOCATION AND ACREAGE DEDICATION AT

Form C-102
Supersedes C-128
Effective 1-1-65

All distances must be from the outer boundaries of the Section

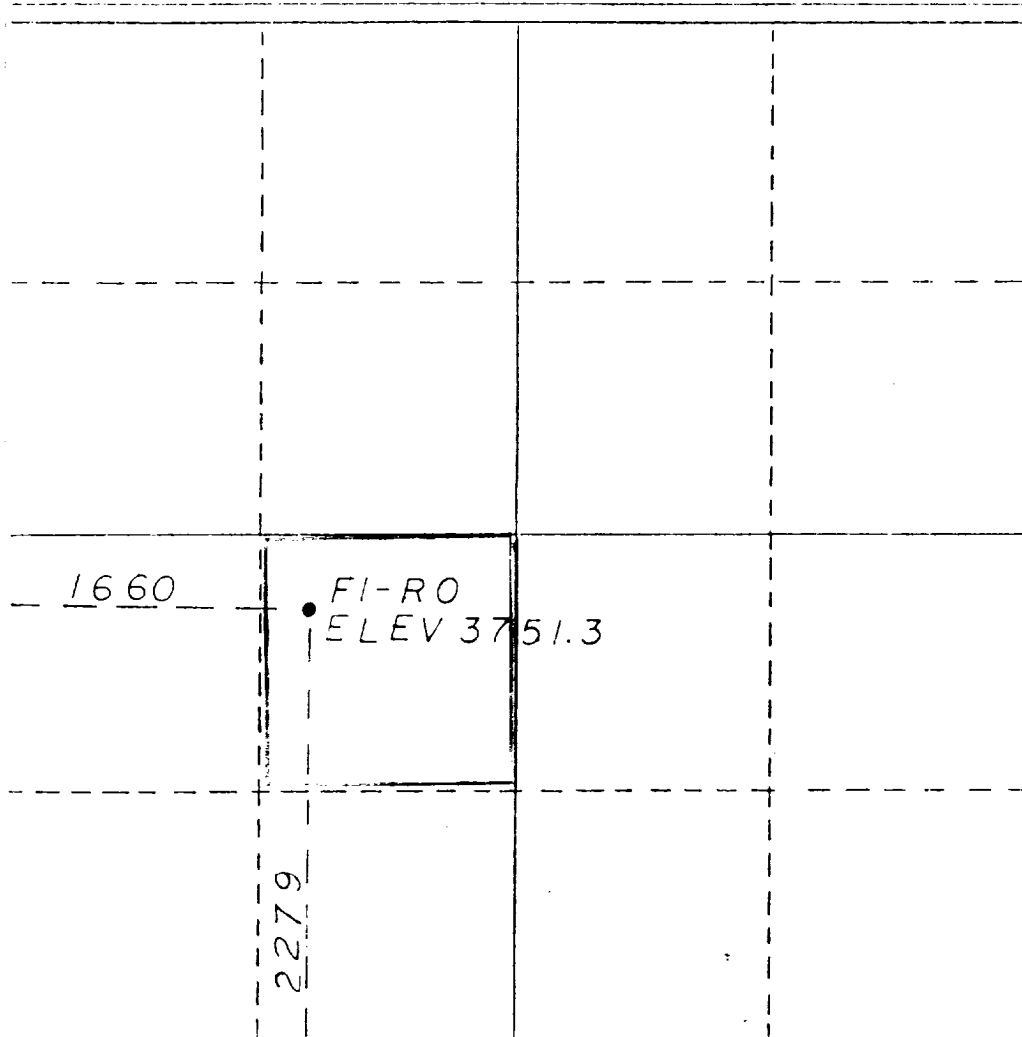
Operator FI-RO CORPORATION		Lease CHISUM FEDERAL		Well No. 2
Well Letter K	Section 24	Township 11-S	Range 27-E	County CHAVES
Actual Footage Location of Well:				
1660 feet from the WEST line and		2279 feet from the SOUTH line		
Ground Level Elev. 3751.3	Underlying Formation SAN ANDRES	Pool CHISUM SAN ANDRES	Dedicated Acreage 40	

- Outline the acreage dedicated to the subject well by colored pencil or hatchure marks on the plat below.
- If more than one lease is dedicated to the well, outline each and identify the ownership thereof (both as to working interest and royalty).
- If more than one lease of different ownership is dedicated to the well, have the interests of all owners been consolidated by communitization, unitization, force-pooling, etc?

☐ Yes ☐ No If answer is "yes," type of consolidation N/A

If answer is "no," list the owners and tract descriptions which have actually been consolidated. (Use reverse side of this form if necessary.)

No allowable will be assigned to the well until all interests have been consolidated (by communitization, unitization, forced-pooling, or otherwise) or until a non-standard unit, eliminating such interests, has been approved by the Commission.



CERTIFICATION

I hereby certify that the information contained herein is true and complete to the best of my knowledge and belief.

Tommy McDonald

Name

TOMMY McDONALD

Position

PRESIDENT

Company

FI-RO CORPORATION

Date

9-28-79

I hereby certify that the well location shown on this plat was plotted from field notes of actual surveys made by me or under my supervision, and that the same is true and correct to the best of my knowledge and belief.

9-27-79

Date Survey

THOMAS T. MAH

Registered Professional Engineer
and/or Land Surveyor

NAME LICENSE NO. **217**

122402

NEW MEXICO

THOMAS T. MAH

330 660 990 1320 1650 1980 2310 2640 2970 3300 3630 3960 4290 4620 4950 5280 5610 5940 6270 6600

NEW MEXICO OIL CONSERVATION COMMISSION
WELL LOCATION AND ACREAGE DEDICATION FORM

Form C-102
Supersedes C-128
Effective 1-1-65

All distances must be from the outer boundaries of the Section.

Operator FI-RO CORPORATION		Lease CHISUM FEDERAL		Well No. 2
Unit Letter K	Section 24	Township 11-S	Range 27-E	County Chaves
Actual Postage Location of Well: 1660 feet from the WEST line and 2980 feet from the NORTH line				
Ground Level Elev. 3751.3	Protecting Formation SAN ANDRES	Pool CHISUM SAN ANDRES	Dedicated Acreage: 40 Acres	

1. Outline the acreage dedicated to the subject well by colored pencil or hatchure marks on the plat below.

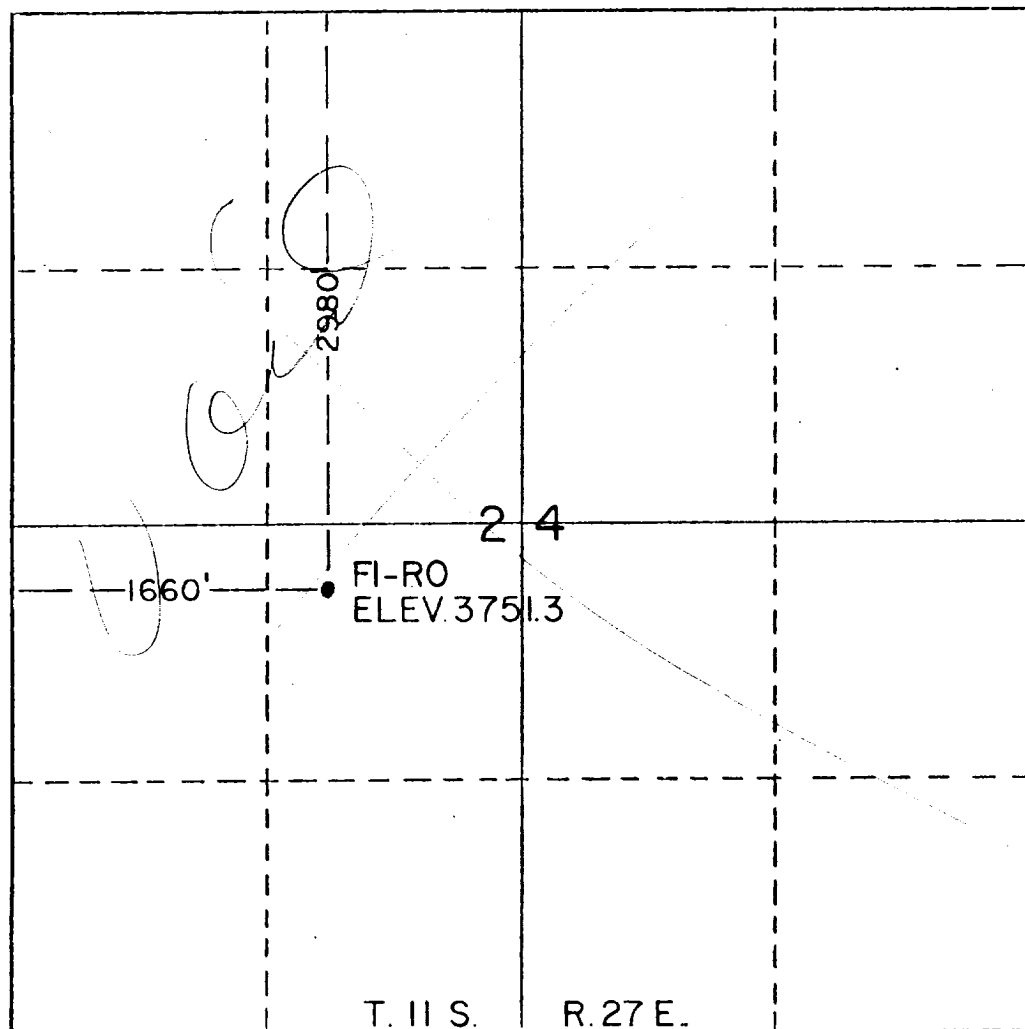
2. If more than one lease is dedicated to the well, outline each and identify the ownership thereof (both as to working interest and royalty).

3. If more than one lease of different ownership is dedicated to the well, have the interests of all owners been consolidated by communitization, unitization, force-pooling, etc.

☐ Yes ☐ No If answer is "yes," type of consolidation N/A

If answer is "no," list the owners and tract descriptions which have actually been consolidated. (Use reverse side of this form if necessary.)

No allowable will be assigned to the well until all interests have been consolidated (by communitization, unitization, forced-pooling, or otherwise) or until a non-standard unit, eliminating such interests, has been approved by the Commission.



CERTIFICATION

I hereby certify that the information contained herein is true and complete to the best of my knowledge and belief.

Tommy McDonald

Name
President *Tommy McDonald*

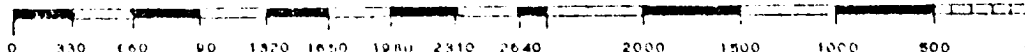
Position
FI-RO Corporation

Company
9-28-79

Date

I hereby certify that the well location shown on this plat was plotted from field notes of actual surveys made by me or under my supervision, and that the same is true and correct to the best of my knowledge and belief.

Thomas T. Mann
Date Surveyed
9-28-79
Registered Professional Engineer and/or Land Surveyor
NEW MEXICO
THOMAS T. MANN
N.M. License No. 277





FOOD. COPY

United States Department of the Interior

RECEIVED

GEOLOGICAL SURVEY
P. O. Drawer U
Artesia, New Mexico 88210

OCT 24 1979

O. C. C.
ARTESIA, OFFICE

FI-RO Corporation
P. O. Box 315
Natchez, Mississippi 39120

Gentlemen:

FI-RO CORPORATION
Chisum Federal No. 2
2300 FSL 1660 FWL Sec. 24 T.11S R.27E
Chaves County Lease No. NM 10593

Above Data Required on Well Sign

Your APPLICATION FOR PERMIT TO DRILL the above-described well to a depth of 2,450 feet to test the San Andres formation is hereby approved subject to compliance with the OIL AND GAS OPERATING REGULATIONS (30 CFR 221) and the following conditions:

1. Drilling operations authorized are subject to compliance with the GENERAL REQUIREMENTS FOR OIL AND GAS OPERATIONS ON FEDERAL LEASES, dated July 1, 1978.
2. Prior to commencing construction of road, pad, or other associated developments, operator will provide the dirt contractor with a copy of the SURFACE USE PLAN and this approval including the GENERAL REQUIREMENTS.
3. Submit a Daily Report of Operations from spud date until the Well Completion Report (form 9-330) is filed. The progress report should be not less than 8" x 5" in size and each page should identify the well.
4. All permanent above-ground structures and equipment shall be painted in accordance with the attached Painting Requirements. The color used should simulate Sandstone Brown (Federal Standard No. 595A, color 20318 or 30318).
5. Cement behind the 8-5/8" casing must be circulated.
6. Please have anyone contacting the Survey in regard to this well to identify the well with all of the information required above for the well sign.

Sincerely yours,

By: GEORGE H. STEWART

George H. Stewart
Acting District Engineer



Fi-Ro Corporation

Machine & Welding Works
P. O. BOX 315
NATCHEZ, MISSISSIPPI 39120
9-28-79

SURFACE USE
CHISUM FEDERAL No. 2

CHAVES COUNTY, N. M.
Section 24-R-27E-T11S

FILED
COT 5
U.S. DEPARTMENT OF AGRICULTURE
NATCHEZ, MISSISSIPPI

1. Existing Roads

The road connecting the "L. E." Ranch and the "Slash G" ranch will be intercepted at the NE corner of Section 24 and then SW to well site.

2. The road which is from the NE to SW corners of 24 passes through the SE corner of location.

3. No. 2 proposed location is 2650 ft. south and 660 feet west of the M-1 Fi-Ro Corporation Chisum Federal and would be approximately 1200 feet from the windmill water well in section 24. See exhibit A.

4. The location will be 200 ft. x 200 ft., with the well in the NE portion and the tank battery in the SW portion. See exhibit B.

5. Water will be purchased from the nearest commercial source and trucked to location by drilling contractor.

6. No construction material will be used for the road during drilling operations.

7. Drilling mud will be contained in a pit large enough to be buried when the job is completed.

8. No ancillary facilities.

9. See exhibit B. No cuts or fills will be required.

10. No reshaping will be required since no cuts or fills will be done. Only removal of mesquite scrub on location.


11. Soil is generally sand or sandy clay.

12. Operator is Fi-Ro Corporation --Representative-Tommy McDonald
P O Box 315 P O Box 577
Natchez, Ms. 39120 Natchez, Ms. 39120
Phone- 601-442-0281 Phone 601-442-0281

Ruidoso N.M. Phone 505-257-7150

I, hereby, certify that I or persons under my direct supervision have inspected the proposed drill site and access route. That I am familiar with condition which presently exist, that the statements made in this plan are to the best of my knowledge, true and correct, and, that the work associated with the operations proposed herein will be performed by Fi-Ro Corporation and its contractors and sub-contractors in conformity with the plan and the terms and conditions under which it is approved.

9-28-79



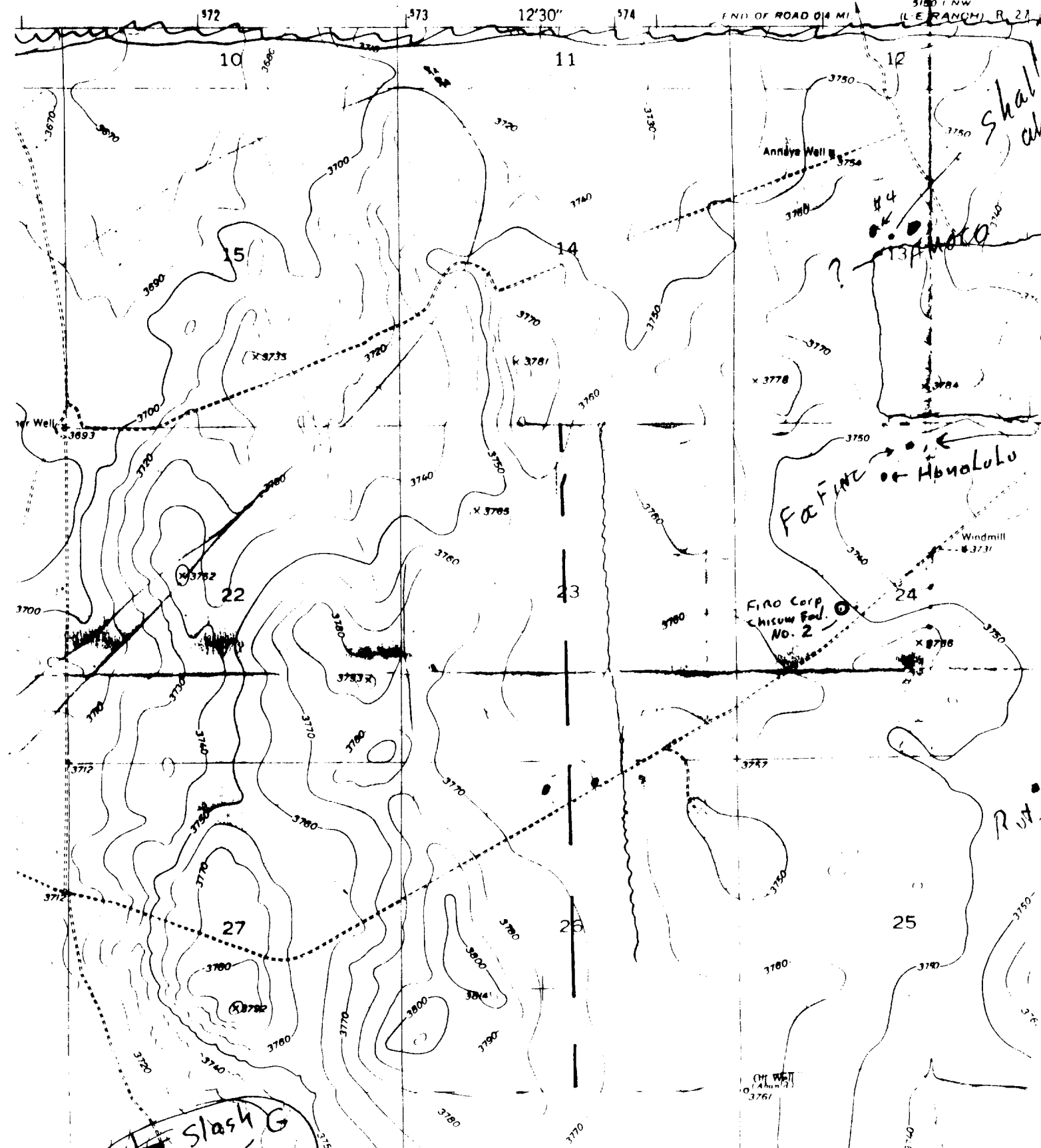
Tommy McDonald
President
Fi-Ro Corporation

A

Shallow well
was produced.

5150 1 NW

(L. E. RANCH) R. 21



Operated By:
TOMMY McDONALD

"All Types Steel Fabrication"

Bus. 445-9911
Res. 442-0281

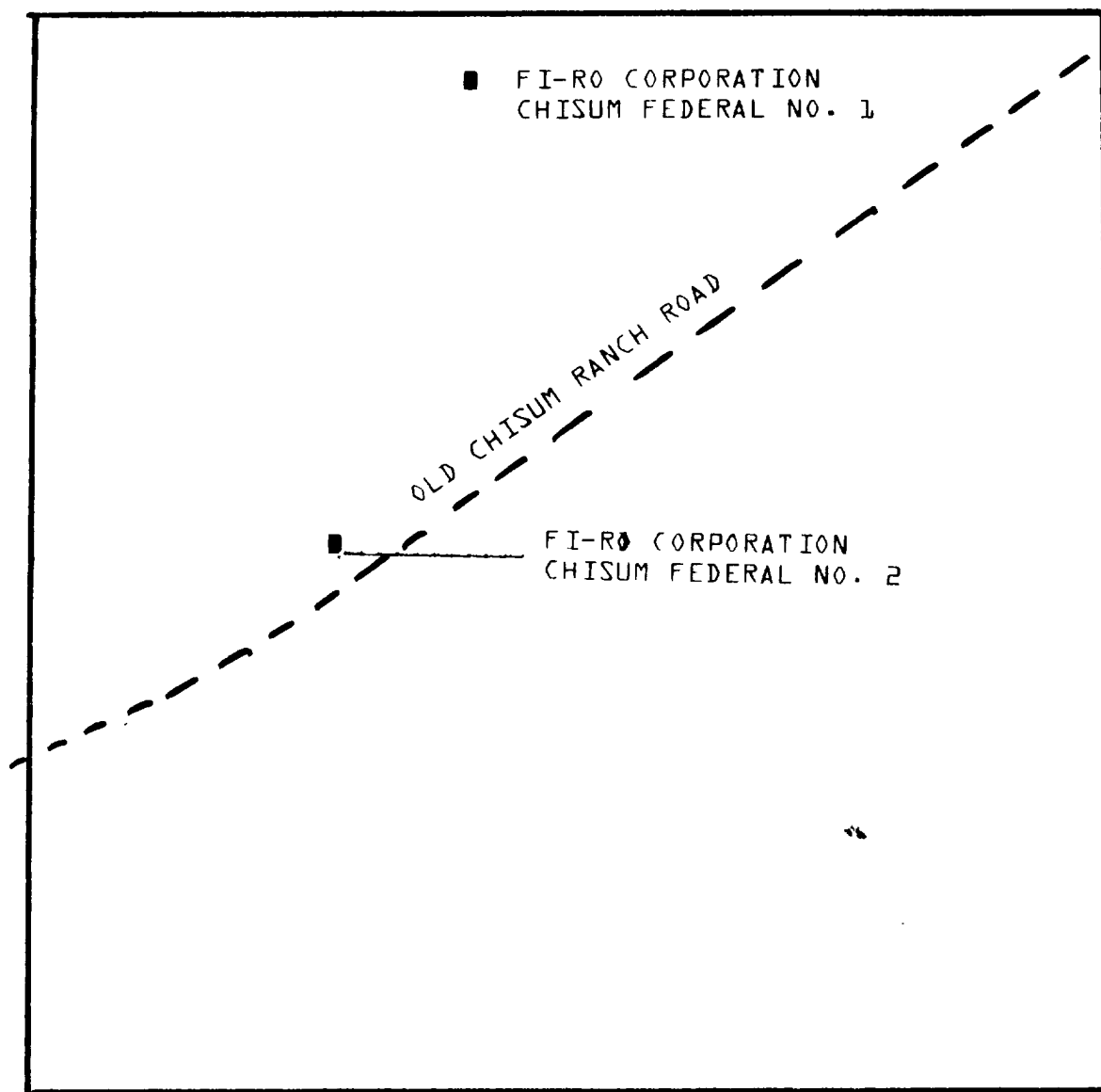
Fi-Ro Corporation

Machine & Welding Works

P. O. BOX 315
NATCHEZ, MISSISSIPPI 39120

FI-RO CORPORATION CHISUM FEDERAL NO. 2

SECTION 24 , T-11-S , R-27-E CHAVES COUNTY NEW MEXICO



Operated By
TOMMY McDONALD

"All Types Steel Fabrication"

Bus. 445-9911
Res. 442-0281

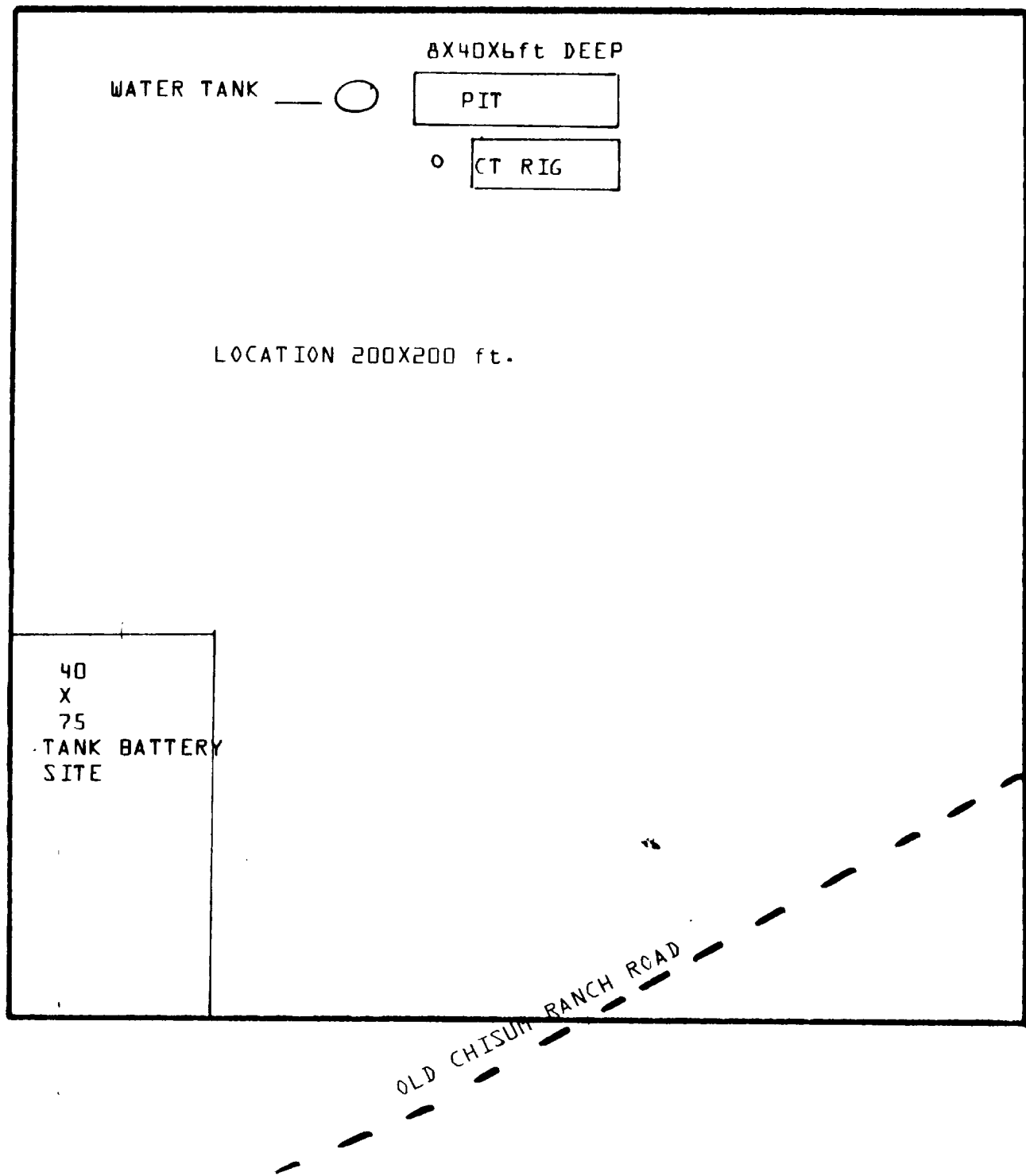
Fi-Ro Corporation

Machine & Welding Works

P. O. BOX 315

NATCHEZ, MISSISSIPPI 39120

B



Fi-Ro Corporation

Machine & Welding Works

P. O. BOX 315

NATCHEZ, MISSISSIPPI 39120

March 26, 1979

Slash G Cattle Company
P O Box 877
Roswell, N M 88201

Elmer and Jane Garnsey

Re: Chaves Co, New Mexico
T 11 S R 27 E
Sec. 24, 23, 25, 26, ~~27~~
and ~~28~~

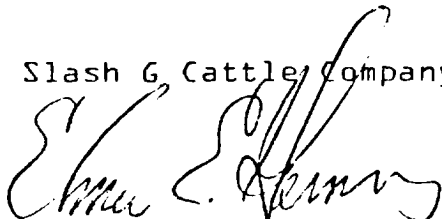
Handwritten: 27, 28, 29
yes.

As per our telephone conversation regarding location and road cost, it is my understanding that you wish us to use all existing roads and to make the smallest amount of new road possible. The route will be agreed upon by both yourselves and Tommy McDonald.

The price for each location is \$500.00 and \$300.00 per mile of new road used. We also assure you that the locations and roads will be kept clean of trash and pits will be fenced to keep cattle out.

If this meets with your approval, please sign and return 1 copy to Fi-Ro Corporation, Natchez, Miss.

Slash G Cattle Company


Elmer Garnsey

Fi-Ro Corporation


Tommy McDonald, Pres.

Archaeological Clearance Report

for

FI-RO Corporation

Chisum Federal Well No. 2

Prepared

By

Dr. J. Loring Haskell

Submitted

By

Dr. J. Loring Haskell
Principal Investigator
New Mexico Archaeological Services Inc.
Carlsbad, New Mexico

28 September 1979

Permit No. 79-NM-166

Introduction

On 28 September 1979, New Mexico Archaeological Services Inc., (NMAS), Carlsbad, undertook for FI-RO Corporation, Natchez, Mississippi, an archaeological reconnaissance of federal lands administered by the Bureau of Land Management in Chaves County, New Mexico. The reconnoitered area will be impacted by the construction of a drill location and associated access road. This project was advanced by Mr. Tommy McDonald, President, FI-RO Corporation, and expedited by Dr. J. Loring Haskell, Principal Investigator, NMAS, Inc.

Survey Technique

For this investigation, FI-RO's, proposed location was reconnoitered for evidence of man's past activities by walking it in a series of 20 ft wide, close interval (15° or less), zigzag transects. In addition, an added zone embracing 20 ft on each side of the staked 400 X 400 ft location, and hence lying outside the bounds of the proposed work area, was reconnoitered by a similar means as was the access road. Methodologically, this procedure served to promote optimal conditions for the visual examination of areas to be impacted by construction-related activities.

Chisum Federal Well No. 2

Location

The proposed location will measure 400 X 400 ft on federal lands and will be situated 1660 ft from the west line and 2980 ft from the north line of:

Section 24, T11S, R27E, NMPM, Chaves County, NM

Thus it will be situated in the:

NE $\frac{1}{4}$ SW $\frac{1}{4}$, Section 24, T11S, R27E, NMPM, Chaves County, NM

The associated access road will measure 12 X 50 ft and will be situated in the:

NE $\frac{1}{4}$ SW $\frac{1}{4}$, Section 24, T11S, R27E, NMPM, Chaves County, NM

Map Reference: USGS WADE RANCH QUADRANGLE, 7.5 Minute Series, 1949.

Terrain

The investigated location is situated on an undulating plain broken by occasional low eminences which serve to crenulate the horizon on both the east and west. Drainage is toward the east via an ill-defined network of drainages. The coeval surface is marked by an extensive system of low hummocks which average .50 m in height. Soils, in general, are typically compacted, non-calcareous, sandy loams, loamy sands, and sandy clay loams of probable Pleistocene age. Albeit rare, Typic Torripsamments contain occasional caliche inclusions; however, material of this type is more typical of the crests of nearby eminences. Scales and puddling are characteristic of some associated peds.

Floristics

The local floral community is dominated by a predominance of Prosopis juliflora and occasional Yucca glauca. Commonly observed forbs include: Croton sp., Zinnia acerosa, Astragalus sp., Perezia nana, Euphorbia spp., and Gutierrezia sarothrae. The Graminae is well represented on this landform's associated soils. Representative types include: Bouteloua spp., Aristida sp., Sporobolus spp., Muhlenbergia arenicola, Setaria macrostachys, Andropogon sp., and Panicum obtusum.

Cultural Resources

No archaeological resources were recorded during this reconnais-

sance. The overall dearth of cultural properties can be attributed to a shortage of lithic material suited to the needs of the lithic artisan, the general openness of the landform with its shallow deflation basins, a lack of surface water, and remoteness from localities possessing these resources and amenities. Locally, archaeological resources most typically occur nearer the bluffs of the Pecos Valley to the west, and in particular in the vicinity of sink holes, where there is a dependable supply of water.

Recommendations

NMAS recommends clearance for FI-RO Corporation's proposed Chisum Federal Well No. 2 and its access road and suggests that work-related activities proceed in accordance with company plans.