

NO. OF COPIES RECEIVED	6
DISTRIBUTION	
SANTA FE	1
FILE	1
U.S.G.S.	2
LAND OFFICE	1
OPERATOR	1

RECEIVED
NEW MEXICO OIL CONSERVATION COMMISSION

NOV 15 1979

O. C. C.
ARTEHIA, OFFICE

30-005-60615

Form C-101
Revised 1-1-65

5A. Indicate Type of Lease	
STATE <input checked="" type="checkbox"/>	FEE <input type="checkbox"/>
5. State Oil & Gas Lease No.	
L-4283	

APPLICATION FOR PERMIT TO DRILL, DEEPEN, OR PLUG BACK

1a. Type of Work		7. Unit Agreement Name	
DRILL <input checked="" type="checkbox"/> DEEPEN <input type="checkbox"/> PLUG BACK <input type="checkbox"/>			
b. Type of Well		8. Farm or Lease Name	
OIL WELL <input type="checkbox"/> GAS WELL <input checked="" type="checkbox"/> OTHER <input type="checkbox"/> SINGLE ZONE <input type="checkbox"/> MULTIPLE ZONE <input type="checkbox"/>		Cottonwood Ranch MK State	
2. Name of Operator		9. Well No.	
Yates Petroleum Corporation		1	
3. Address of Operator		10. Field and Pool, or Wildcat	
207 South 4th Street, Artesia, New Mexico 88210		Wildcat Granite Wash	
4. Location of Well		12. County	
UNIT LETTER <u>B</u> LOCATED <u>660</u> FEET FROM THE <u>North</u> LINE AND <u>1980</u> FEET FROM THE <u>east</u> LINE OF SEC. <u>36</u> TWP. <u>6S</u> RGE. <u>25E</u> NMPM		Chaves	
		19. Proposed Depth	
		5300	
		19A. Formation	
		Granite Wash	
		20. Rotary or C.T.	
		Rotary	
21. Elevations (Show whether DF, RT, etc.)		22. Approx. Date Work will start	
3752		ASAP	
21A. Kind & Status Plug. Bond		21B. Drilling Contractor	
Blanket		LaRue Drilling Co.	

23.

PROPOSED CASING AND CEMENT PROGRAM

SIZE OF HOLE	SIZE OF CASING	WEIGHT PER FOOT	SETTING DEPTH	SACKS OF CEMENT	EST. TOP
17 1/2"	13 3/8"	48# J-55	Approx. 450'	375	Circulate
12 1/2"	8 5/8"	24# J-55	Approx. 1350'	750	Circulate
8 3/4 or 7 7/8"	5 1/2 or 4 1/2"	15.5 or 10.5#	TD	200	

We propose to drill and test the granite wash and intermediate formations. Approximately 450' of surface casing will be set and cement circulated to shut off gravel and caving. Casing will be set 100' below the water zone. If commercial, 5 1/2 or 4 1/2" production casing will be run and cemented with an adequate cover, perforate and stimulate as needed for production.

MUD PROGRAM: FW gel and LCM to 1350'; Fresh water KCL to 3200', Gel, Drispak, oil and starch to TD, MW -9.7 Vis 36-46 WL 14-7

BOP PROGRAM: BOP's will be installed on 8 5/8" casing and tested daily.

GAS NOT DEDICATED.

APPROVAL VALID

FOR 90 DAYS UNLESS

DRILLING COMMENCED,

EXPIRES 2-16-80

IN ABOVE SPACE DESCRIBE PROPOSED PROGRAM: IF PROPOSAL IS TO DEEPEN OR PLUG BACK, GIVE DATA ON PRESENT PRODUCTIVE ZONE AND PROPOSED NEW PRODUCTIVE ZONE. GIVE BLOWOUT PREVENTER PROGRAM, IF ANY.

I hereby certify that the information above is true and complete to the best of my knowledge and belief.

Signed Glenn R. Rodriguez Title Geographer Date 11/14/79

(This space for State Use)

APPROVED BY W. A. Gussert TITLE SUPERVISOR, DISTRICT II DATE NOV 16 1979

CONDITIONS OF APPROVAL, IF ANY:

Cement must be circulated to
surface behind 13 3/8" & 8 5/8" casing

NEW MEXICO OIL CONSERVATION COMMISSION
WELL LOCATION AND ACREAGE DEDICATION PLAT

Form C-102
Supersedes C-128
Effective 1-1-65

All distances must be from the outer boundaries of the Section.

Operator YATES PETROLEUM CORPORATION			Lease Cottonwood Ranch MK State		Well No. 1
Unit Letter B	Section 36	Township 6 South	Range 25 East	County Chaves	
Actual Footage Location of Well: 660 feet from the North line and 1980 feet from the East line					
Ground Level Elev. 3752	Producing Formation GRANITE WASH		Pool WILDCAT Granite Wash		Dedicated Acreage: 320 Acres

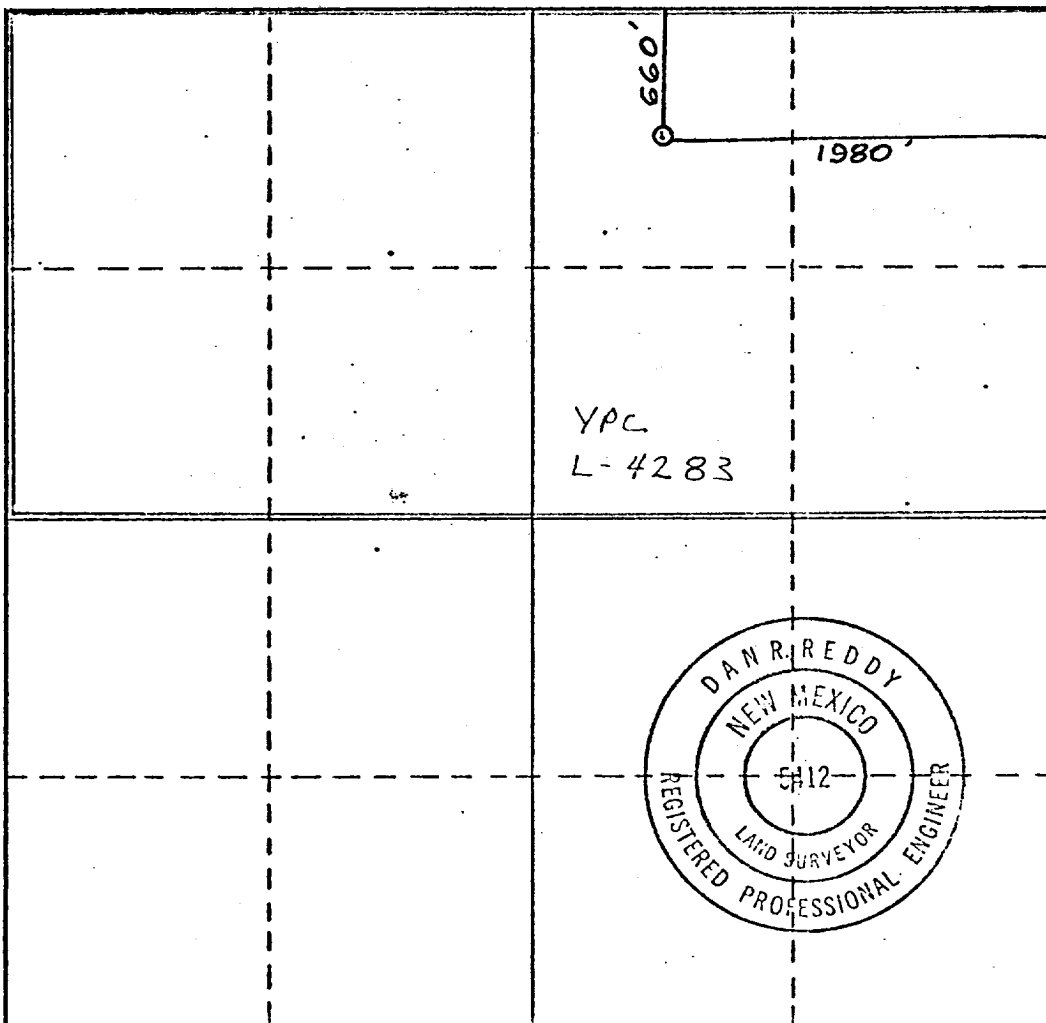
1. Outline the acreage dedicated to the subject well by colored pencil or machine marks on the plat below.
2. If more than one lease is dedicated to the well, outline each and identify the ownership thereof (both as to working interest and royalty).
3. If more than one lease of different ownership is dedicated to the well, have the interests of all owners been consolidated by communitization, unitization, force-pooling, etc?

RECEIVED
NOV 15 1979
O.F.C.
ARTESIA, OFFICE

☐ Yes ☐ No If answer is "yes," type of consolidation _____

If answer is "no," list the owners and tract descriptions which have actually been consolidated. (Use reverse side of this form if necessary.) _____

No allowable will be assigned to the well until all interests have been consolidated (by communitization, unitization, forced-pooling, or otherwise) or until a non-standard unit, eliminating such interests, has been approved by the Commission.



CERTIFICATION

I hereby certify that the information contained herein is true and complete to the best of my knowledge and belief.

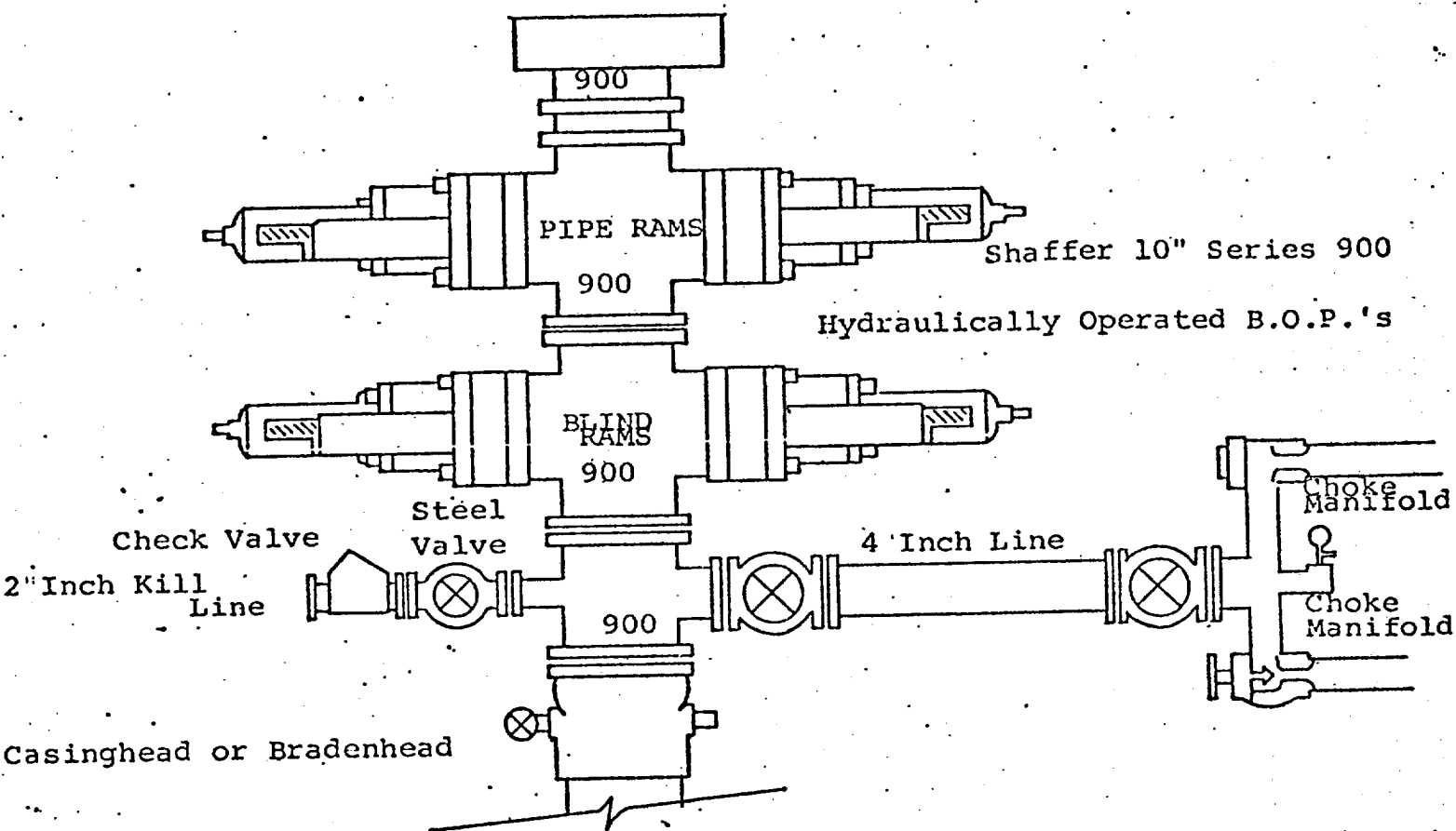
Alicerio Rodriguez
Name
GLISERIO RODRIGUEZ
Position
GEOGRAPHER
Company
YATES PETROLEUM CORP
Date
11-13-79

I hereby certify that the well location shown on this plat was plotted from field notes of actual surveys made by me or under my supervision, and that the same is true and correct to the best of my knowledge and belief.

Date Surveyed
Nov. 13, 1979
Registered Professional Engineer and/or Land Surveyor

Dan R. Reddy
Certificate No.
NM PE&LS #5412

0 330 660 990 1320 1650 1980 2310 2640 2970 3300 3630 3960 4290 4620 4950 5280 5610 5940 6270 6600



THE FOLLOWING CONSTITUTE MINIMUM BLOWOUT PREVENTER REQUIREMENTS

1. All preventers to be hydraulically operated with secondary manual controls installed prior to drilling out from under casing.
2. Choke outlet to be a minimum of 4" diameter.
3. Kill line to be of all steel construction of 2" minimum diameter.
4. All connections from operating manifolds to preventers to be all steel. hole or tube a minimum of one inch in diameter.
5. The available closing pressure shall be at least 15% in excess of that required with sufficient volume to operate the B.O.P.'s.
6. All connections to and from preventer to have a pressure rating equivalent to that of the B.O.P.'s.
7. Inside blowout preventer to be available on rig floor.
8. Operating controls located a safe distance from the rig floor.
9. Hole must be kept filled on trips below intermediate casing. Operator not responsible for blowouts resulting from not keeping hole full.
10. D. P. float must be installed and used below zone of first gas intrusion.