

NO. OF COPIES RECEIVED	6
DISTRIBUTION	
SANTA FE	1
FILE	1 ✓
U.S.G.S.	2
LAND OFFICE	1
OPERATOR	1

NEW MEXICO OIL CONSERVATION COMMISSION

RECEIVED

NOV 15 1979

O. C. C.
ARTESIA, OFFICE

30-005-60616

Form C-101
Revised 1-1-65

5A. Indicate Type of Lease
STATE <input checked="" type="checkbox"/> FEE <input type="checkbox"/>
5. State Oil & Gas Lease No.
L-5026

APPLICATION FOR PERMIT TO DRILL, DEEPEN, OR PLUG BACK			
1a. Type of Work		7. Unit Agreement Name	
b. Type of Well DRILL <input checked="" type="checkbox"/> DEEPEN <input type="checkbox"/> PLUG BACK <input type="checkbox"/> OIL WELL <input type="checkbox"/> GAS WELL <input checked="" type="checkbox"/> OTHER <input type="checkbox"/> SINGLE ZONE <input type="checkbox"/> MULTIPLE ZONE <input type="checkbox"/>		8. Farm or Lease Name Camp State	
2. Name of Operator Mesa Petroleum Co ✓		9. Well No. 1	
3. Address of Operator 1000 Vaughn Building / Midland, Texas 79701		10. Field and Pool, or Wildcat Undesignated-Wolfcamp Wildcat	
4. Location of Well UNIT LETTER H LOCATED 1980 FEET FROM THE North LINE AND 880 FEET FROM THE East LINE OF SEC. 6 TWP. 4S RGE. 26E NMPM		12. County Chaves	
19. Proposed Depth 4800		19A. Formation Wolfcamp	
20. Rotary or C.T. Rotary		21. Elevations (Show whether DF, RT, etc.) 3904.5' GR	
21A. Kind & Status Plug. Bond Blanket		21B. Drilling Contractor WEK	
22. Approx. Date Work will start November 15, 1979			

PROPOSED CASING AND CEMENT PROGRAM

SIZE OF HOLE	SIZE OF CASING	WEIGHT PER FOOT	SETTING DEPTH	SACKS OF CEMENT	EST. TOP
17-1/2"	13-3/8"	48#	300'	320	surface
11"	8-5/8"	24#	1500'	265LW/200 "C"	surface
7-7/8"	4-1/2"	10.5#	4800'	600LW/200 50/50 Poz	surface

Propose to run 13-3/8" casing from surface to 300' as conductor string due to circulation problems encountered in other area wells. Will circulate cement to surface then drill 11" hole to 1500' without BOPs using fresh water with lost circulation material added as needed. Set 8-5/8" casing and circulate cement to surface. Nipple up 10" API 3000 psi double BOPs and test to 600 psi. Drill 7-7/8" hole to TD, using fresh water, caustic soda (for pH 9.0 - 9.5) and corrosion inhibitors as required to 3700'. Then will mud up with starch and soda ash, maintaining mud weight less than 10 ppg and adding 3% kcl to the water gel mud. 4-1/2" production casing will be run and cement raised to the surface.

Gas is not dedicated.

APPROVAL VALID
FOR 90 DAYS UNLESS
DRILLING COMMENCED,
EXPIRES 2-16-80

ON ABOVE SPACE DESCRIBE PROPOSED PROGRAM: IF PROPOSAL IS TO DEEPEN OR PLUG BACK, GIVE DATA ON PRESENT PRODUCTIVE ZONE AND PROPOSED NEW PRODUCTIVE ZONE. GIVE BLOWOUT PREVENTER PROGRAM, IF ANY.

hereby certify that the information above is true and complete to the best of my knowledge and belief.

Signed N. P. Stachur Title Regulatory Coordinator Date November 13, 1979

(This space for State Use)

APPROVED BY W. A. Gussert TITLE SUPERVISOR, DISTRICT II DATE NOV 16 1979

CONDITIONS OF APPROVAL, IF ANY:

XC: MEC, TLS, JWH, JBH, FILE, WI OWNERS, NMOC ARTESIA (6) surface behind 13 3/8" & 8 5/8" casing

MEXICO OIL CONSERVATION COMMISSION
WELL LOCATION AND ACREAGE DEDICATION PLAT

Form O-102
Supersedes C-128
Effective 1-1-65

All distances must be from the outer boundaries of the Section.

Operator MESA PETROLEUM CO.		Lease Camp State		Section 1	
Unit Letter H	Section 6	Township 4 South	Range 26 East	County Chaves	
Actual Location of Well: 1980 feet from the North line and 880 feet from the East line.					
Ground Level Elev. 3904.5	Producing from zone Wolfcamp	Producing from zone Unassigned		Section number (320) 329.05	

- Outline the acreage dedicated to the subject well by colored pencil or hatchure marks on the plat below.
- If more than one lease is dedicated to the well, outline each and identify the ownership thereof (as to working interest and royalty).
- If more than one lease of different ownership is dedicated to the well, have the interests of all owners been consolidated by communization, unitization, force-pooling, etc?

RECEIVED

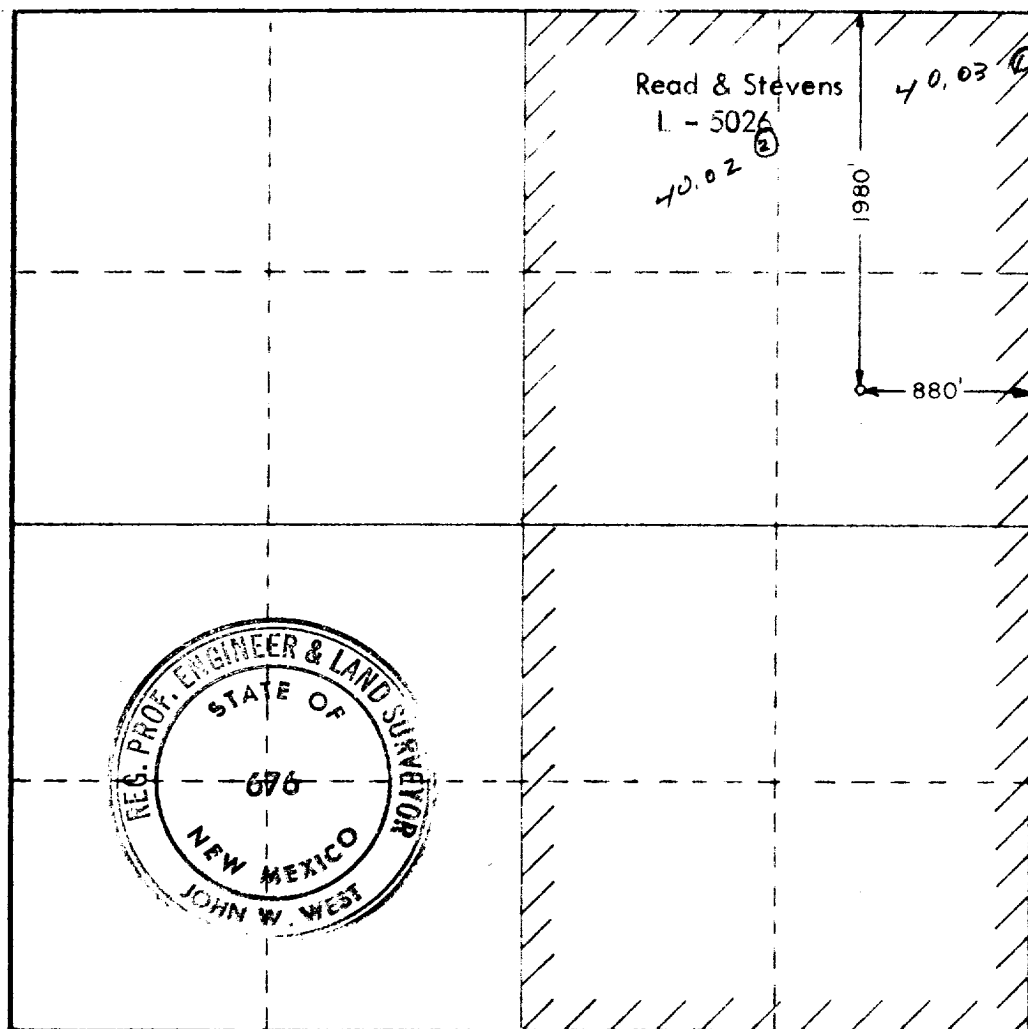
NOV 15 1979

O. E. C.
ARTESIA, OFFICE

☐ Yes ☐ No If answer is "yes," type of consolidation _____

If answer is "no," list the owners and tract descriptions which have actually been consolidated (Use reverse side of this form if necessary.) _____

No allowable will be assigned to the well until all interests have been consolidated (by communization, unitization, forced-pooling, or otherwise) or until a non-standard unit, eliminating such interests, has been approved by the Commission.



CERTIFICATION

I hereby certify that the information contained herein is true and complete to the best of my knowledge and belief.

R. E. Mathis

Name
R. E. Mathis

Position
Regulatory Coordinator

Company
Mesa Petroleum Company

Date
11 - 13 - 79

I hereby certify that the well location shown on this plat was plotted from field notes of actual surveys made by me or under my supervision and that the same is true and correct to the best of my knowledge and belief.

Date Surveyed
November 12, 1979

Registered Interest in Engineering and Land Surveying

John W. West

Certificate No. **JOHN W. WEST 676**
PATRICK A. ROMERO 6663
Ronald J. Eldon 3239

