

NEW MEXICO OIL CONSERVATION COMMISSION
WELL LOCATION AND ACREAGE DEDICATION PLAT

Form O-17
Supersedes O-128
Effective 1-1-65

All distances must be from the outer boundaries of the Section.

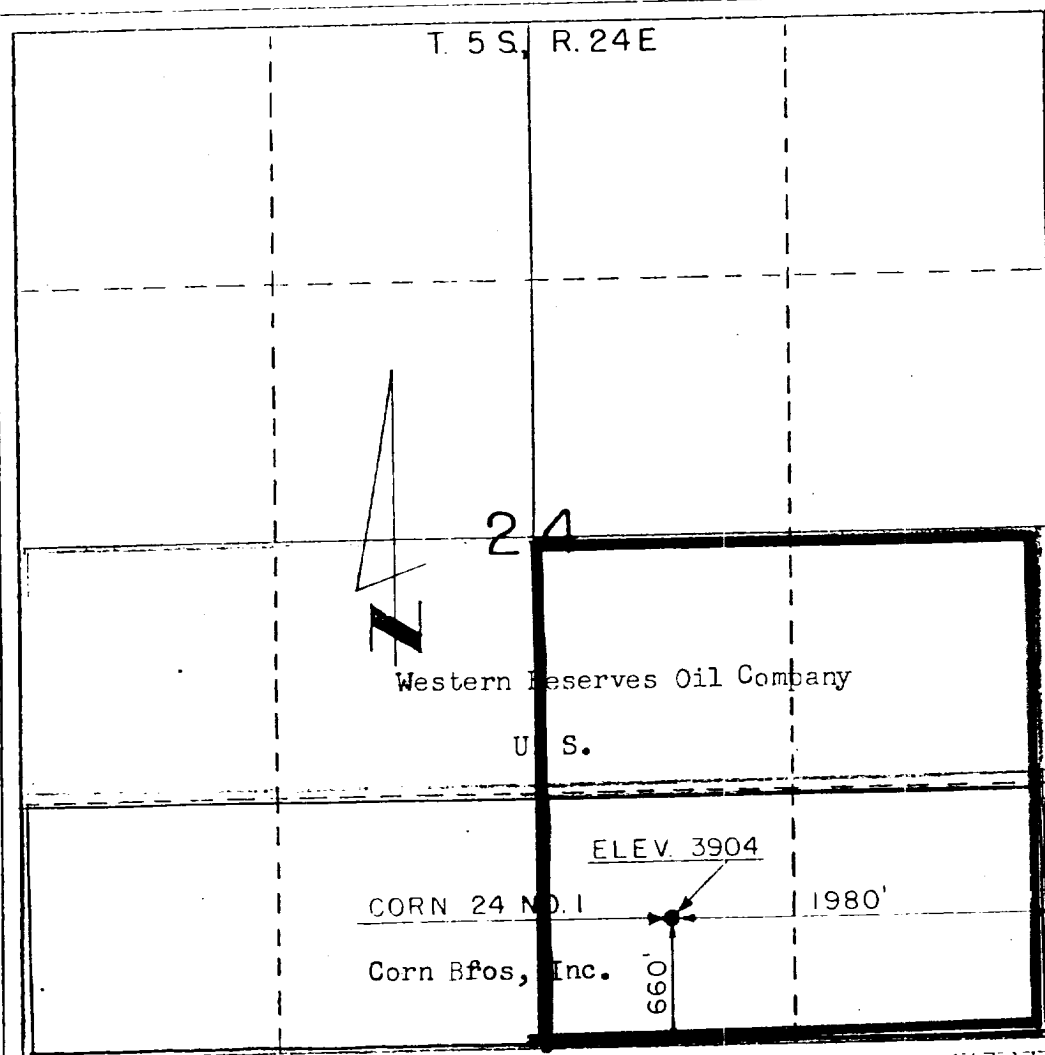
Operator Fred Pool, Dr. Co.		Lease Corn 24 Com.		Well No. 1
Unit Letter 0	Section 24	Township 5 South	Range 24 East	County Chaves
Actual Well Location of Well:				
1980'	feet from the east	line end	660'	feet from the south
Ground Level Elev. 3904'	Producing Formation Abo	Pool Wildcat Area Abo	Dedicated Acreage 160	

- Outline the acreage dedicated to the subject well by colored pencil or hatchure marks on the plat below.
- If more than one lease is dedicated to the well, outline each and identify the ownership thereof (both as to working interest and royalty).
- If more than one lease of different ownership is dedicated to the well, have the interests of all owners been consolidated by communization, unitization, force-pooling, etc?

☒ Yes ☒ No If answer is "yes," type of consolidation Comm. OFFICE

If answer is "no," list the owners and tract descriptions which have actually been consolidated. (Use reverse side of this form if necessary.)

No allowable will be assigned to the well until all interests have been consolidated (by communization, unitization, forced-pooling, or otherwise) or until a non-standard unit, eliminating such interests, has been approved by the Commission.



CERTIFICATION

I hereby certify that the information contained herein is true and complete to the best of my knowledge and belief.

Fred Pool, Jr.

Name

Operator

Position

Fred Pool Drlg. Co.

Company

1-4-80

Date

I hereby certify that the well location shown on this plat was plotted from field notes of actual surveys made by me or under my supervision, and that the same is true and correct to the best of my knowledge and belief.

Date Surveyed

January 4, 1980

Registered Professional Engineer and/or Land Surveyor

Thomas T. Mann

Certificate No.

N.M. 277

