

SUBMIT IN TRIPLICATE\*  
(Other instructions on  
reverse side)Form approved.  
Budget Bureau No. 42-R1425.UNITED STATES  
DEPARTMENT OF THE INTERIOR  
GEOLOGICAL SURVEY

30-005-60645

## APPLICATION FOR PERMIT TO DRILL, DEEPEN, OR PLUG BACK

1a. TYPE OF WORK DRILL <input checked="" type="checkbox"/> DEEPEN <input type="checkbox"/> PLUG BACK <input type="checkbox"/>		5. LEASE DESIGNATION AND SERIAL NO. USA - <del>RECEIVED</del> 8152
b. TYPE OF WELL OIL WELL <input type="checkbox"/> GAS WELL <input checked="" type="checkbox"/> OTHER <input type="checkbox"/>		6. IF INDIAN, ALLOTTEE OR TRIBE NAME
2. NAME OF OPERATOR Yates Petroleum Corporation		7. UNIT AGREEMENT 1980
3. ADDRESS OF OPERATOR 207 South 4th Street, Artesia, NM 88210		8. FARM OR LEASE NAME Iwanowski "Fed" #1
4. LOCATION OF WELL (Report location clearly and in accordance with any State requirements) At surface 1780 FNL & 560 FEL At proposed prod. zone		9. WELL NO. 1
14. DISTANCE IN MILES AND DIRECTION FROM NEAREST TOWN OR POST OFFICE Approx. 30 miles N NE of Roswell, NM		10. FIELD AND POOL, OR WILDCAT Wildcat
15. DISTANCE FROM PROPOSED* LOCATION TO NEAREST PROPERTY OR LEASE LINE, FT. (Also to nearest drig. unit line, if any) 560		11. SEC., T., R., M., OR BLK. AND SURVEY OR AREA Sec. 34-T6S-R24E
16. NO. OF ACRES IN LEASE 160		12. COUNTY OR PARISH 13. STATE Chaves NM
17. DISTANCE FROM PROPOSED* LOCATION TO NEAREST WELL, DRILLING, COMPLETED, OR APPLIED FOR, ON THIS LEASE, FT. 5400		14. NO. OF ACRES ASSIGNED TO THIS WELL 320
18. PROPOSED DEPTH 5400		15. ROTARY OR CABLE TOOLS Rotary
21. ELEVATIONS (Show whether DF, RT, GR, etc.) 3932.2 GR		22. APPROX. DATE WORK WILL START* As soon as approved

JAN 23 1980

U.S. GEOLOGICAL SURVEY  
ARTESIA, NEW MEXICO

## PROPOSED CASING AND CEMENTING PROGRAM

SIZE OF HOLE	SIZE OF CASING	WEIGHT PER FOOT	SETTING DEPTH	QUANTITY OF CEMENT
17 1/2"	13 3/8"	48# J-55	Approx. 450	Circulate
12 1/2"	8 5/8"	24# J-55	Approx 1500	Circulate
8 3/4 or	5 1/2 or	15.5 or	T.D.	
7 7/8	4 1/2	10.5 #		

We propose to drill and test the granite wash and intermediate formations. Approx. 350' of surface casing will be set and cement circulated to shut off gravel and caving. Casing will be set 100' below the water zone. If commercial, 5½ or 4½ production casing will be run and cemented with an adequate cover, perforate and stimulate as needed for production.

MUD PROGRAM: FW gel and LCM to 1500' Brine KCL Drispak & Starch to 4300', flosal-driskak KCL to TD. NW 10-10.2, Vis 34-39, WL 14-7

BOP PROGRAM: BOP's will be installed on 8 5/8" casing and tested daily.

GAS NOT DEDICATED.

IN ABOVE SPACE DESCRIBE PROPOSED PROGRAM: If proposal is to deepen or plug back, give data on present productive zone and proposed new productive zone. If proposal is to drill or deepen directionally, give pertinent data on subsurface locations and measured and true vertical depths. Give blowout preventer program, if any.

24. SIGNED [Signature] TITLE [Signature] DATE 1-21-80  
(This space for Federal or State office use)

PERMIT NO. \_\_\_\_\_ APPROVAL DATE 1-29-80

APPROVED BY \_\_\_\_\_ TITLE \_\_\_\_\_ DATE \_\_\_\_\_  
CONDITIONS OF APPROVAL, IF ANY:

NEW MEXICO OIL CONSERVATION COMMISSION  
WELL LOCATION AND ACREAGE DEDICATION PLAT

Form C-102  
Supersedes C-128  
Effective 1-1-65

All distances must be from the outer boundaries of the Section.

Operator <b>Yates Petroleum Corporation</b>			Lease <b>Iwanowski "MM" Federal</b>		Well No. <b>1</b>
Unit Letter <b>H</b>	Section <b>34</b>	Township <b>6 South</b>	Range <b>24 East</b>	County <b>Chaves</b>	
Actual Footage Location of Well: <b>1780</b> feet from the <b>North</b> line and <b>560</b> feet from the <b>East</b> line					
Ground Level Elev. <b>3932.2</b>	Producing Formation <b>PENN</b>		Pool <b>WILDCAT - UNDES.</b>	Dedicated Acreage: <b>320</b> Acres	

1. Outline the acreage dedicated to the subject well by colored pencil or hatchure marks on the plat below.
2. If more than one lease is dedicated to the well, outline each and identify the ownership thereof (both as to working interest and royalty).
3. If more than one lease of different ownership is dedicated to the well, have the interests of all owners been consolidated by communitization, unitization, force-pooling, etc?

RECEIVED

JAN 31 1980

U.S. GEOLOGICAL SURVEY

ARTESIA, OFFICE

☒ Yes ☐ No If answer is "yes," type of consolidation COMMUNITIZATION

If answer is "no," list the owners and tract descriptions which have actually been consolidated. (Use reverse side of this form if necessary.)

No allowable will be assigned to the well until all interests have been consolidated (by communitization, unitization, forced-pooling, or otherwise) or until a non-standard unit, eliminating such interests, has been approved by the Commission.

<p>RECEIVED</p> <p>JAN 23 1980</p> <p>U.S. GEOLOGICAL SURVEY ARTESIA, NEW MEXICO</p> <p>MOVED BY BLM &amp; ARCHAEOLOGIST</p>	<p>J. GRYNBERG NM 11457</p> <p>1780'</p>	<p>CERTIFICATION</p> <p>I hereby certify that the information contained herein is true and complete to the best of my knowledge and belief.</p> <p><i>Gliserio Rodriguez</i> Name <b>GLISERIO RODRIGUEZ</b> Position <b>GEOGRAPHER</b> Company <b>YATES PETROLEUM CORP</b> Date <b>1-2-80</b></p> <p>I hereby certify that the well location shown on this plat was plotted from field notes of actual surveys made by me or under my supervision, and that the same is true and correct to the best of my knowledge and belief.</p> <p><b>REFER TO ORIGINAL PLAT</b></p> <p>Date Surveyed</p> <p>Registered Professional Engineer and/or Land Surveyor</p> <p>Certificate No.</p>
	<p>YATES PET NM-28152</p> <p>560'</p>	
	<p>J. GRYNBERG NM-11457</p>	
	<p>0 330 660 990 1320 1650 1980 2310 2640 2970 3300 3630 3960 4290 4620 4950 5280 5610 5940 6270 6600</p>	

NEW MEXICO OIL CONSERVATION COMMISSION  
WELL LOCATION AND ACREAGE DEDICATION PLAT

Form C-102  
Supersedes C-128  
Effective 1-1-65

All distances must be from the outer boundaries of the Section.

Operator <b>Yates Petroleum Corporation</b>			Lease <b>Iwanowski MM Federal</b>		Well No. <b>1</b>
Unit Letter <b>H</b>	Section <b>34</b>	Township <b>6 South</b>	Range <b>24 East</b>	County <b>Chaves</b>	
Actual Postage Location of Well: <b>1980</b> <sup>1720</sup> feet from the <b>North</b> line and <b>660</b> feet from the <b>East</b> line					
Ground Level Elev. <b>3932.2</b>	Producing Formation	Pool	Dedicated Acreage		

1. Outline the acreage dedicated to the subject well by colored pencil or hachure marks on the plat below.
2. If more than one lease is dedicated to the well, outline each and identify the ownership thereof (both as to working interest and royalty).
3. If more than one lease of different ownership is dedicated to the well, have the interests of all owners been consolidated by communitization, unitization, force-pooling, etc?

☐ Yes ☐ No If answer is "yes," type of consolidation \_\_\_\_\_

If answer is "no," list the owners and tract descriptions which have actually been consolidated. (Use reverse side of this form if necessary.) \_\_\_\_\_

No allowable will be assigned to the well until all interests have been consolidated (by communitization, unitization, forced-pooling, or otherwise) or until a non-standard unit, eliminating such interests, has been approved by the Commission.

RECEIVED

JAN 23 1980

U.S. GEOLOGICAL SURVEY  
ARTESIA, NEW MEXICO


J.J. GRAMPERS  
NM 11457

YATES  
28152

J.J. GRYNBERG  
NM 11457

1980

660'



CERTIFICATION

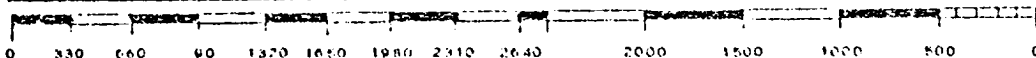
I hereby certify that the information contained herein is true and complete to the best of my knowledge and belief.

*Gliserio Rodriguez*  
Name  
**GLISERIO RODRIGUEZ**  
Position  
**GEOGRAPHER**  
Company  
**YATES PETROLEUM CORP**  
Date  
**1-2-80**

I hereby certify that the well location shown on this plot was plotted from field notes of actual surveys made by me or under my supervision, and that the same is true and correct to the best of my knowledge and belief.

Date Surveyed  
**12/27/79**  
Registered Professional Engineer and/or Land Surveyor

*Dan R. Reddy*  
Certificate No.  
**NMPE&LS #5412**





207 SOUTH FOURTH STREET  
ARTESIA, NEW MEXICO 88210  
TELEPHONE (505) 746-3558

RECEIVED

JAN 25 1980

U.S. GEOLOGICAL SURVEY  
ARTESIA, NEW MEXICO

MARTIN YATES, III  
VICE PRESIDENT  
JOHN A. YATES  
VICE PRESIDENT  
B. W. HARPER  
SEC. TREAS.

RECEIVED

JAN 31 1980

January 25, 1980

O. C. D.  
ARTESIA, OFFICE

U.S.G.S.  
P. O. Drawer U  
Artesia, New Mexico 88210

Re: Iwanowski "MM" Federal #1  
Lease NM-28152

Gentlemen:

Yates Petroleum Corporation is submitting an application to drill a well on surface patented to Corn Brothers, Inc., c/o Bronson Corn, Dunlap Star Route, Roswell, New Mexico 88201. This well will be located 1780' FNL and 560' FEL of Section 34, T6S-R24E in Chaves County.

In a telephone conversation with Mr. Bronson Corn, it was agreed that we would compensate him momentarily for the surface damaged in drilling this well. Also that in the event of a dry hole, we would leave the road intact as it is an existing ranch road. The pit area will be leveled after they are dry and along with the pad will be left to reseed naturally. The hole will be turned over to the rancher to use as a water well after formations below the water table are plugged off.

Sincerely,

YATES PETROLEUM CORPORATION

Rod Rodriguez  
Geographer

RR/ob



# United States Department of the Interior

## GEOLOGICAL SURVEY

P. O. Drawer U  
Artesia, New Mexico 88210

RECEIVED

JAN 31 1980

O. C. D.  
ARTESIA, OFFICE

January 29, 1980

Yates Petroleum Corporation  
207 South Fourth Street  
Artesia, New Mexico 88210

YATES PETROLEUM CORPORATION  
Iwanowski "MM" Fed No. 1  
1780 FNL 560 FEL Sec. 34 T.6S R.24E  
Chaves County Lease No. NM 28152

Gentlemen:

Above Data Required on Well Sign

Your APPLICATION FOR PERMIT TO DRILL the above-described well to a depth of 5,400 feet to test the Penn is hereby approved subject to approval of the unorthodox location by the New Mexico Oil Conservation Division and compliance with the OIL AND GAS OPERATING REGULATIONS (30 CFR 221) and the following conditions:

1. Drilling operations authorized are subject to compliance with the attached General Requirements for Oil and Gas Operations on Federal Leases, dated July 1, 1978.
2. Prior to commencing construction of road, pad, or other associated developments, operator will provide the dirt contractor with a copy of the Surface Use Plan and these Conditions of Approval including the attached General Requirements.
3. Submit a Daily Report of Operations from spud date until the well is completed and the Well Completion Report (form 9-330) is filed. The report should not be less than 8" x 5" in size and each page should identify the well.
4. All permanent above-ground structures and equipment shall be painted in accordance with the attached Painting Guidelines. The color used should simulate Sandstone Brown (Federal Standard No. 595A, color 20318 or 30318).
5. Before drilling below the 8-5/8" casing, the blowout preventer assembly will consist of a minimum of one annular type and two ram type preventers.
6. A kelly cock will be installed and maintained in operable condition.



7. After setting the 8-5/8" casing string and before drilling into the Wolfcamp formation, the blowout preventers and related control equipment shall be pressure tested to rated working pressures by an independent service company. Any equipment failing to test satisfactorily shall be repaired or replaced. This office should be notified in sufficient time for a representative to witness the tests and shall be furnished a copy of the pressure test report.
8. Mud system monitoring equipment, with derrick floor indicators and visual and audio alarms, shall be installed and operating before drilling into the Wolfcamp formation and used until production casing is run and cemented. Monitoring equipment shall consist of the following:
  - (1) A recording pit level indicator to determine pit volume gains and losses.
  - (2) A mud volume measuring device for accurately determining mud volume necessary to fill the hole on trips.
  - (3) A flow sensor on the flow-line to warn of any abnormal mud returns from the well.
9. Cement behind the 13-3/8" casing must be circulated.
10. Please have anyone contacting the Survey in regard to this well to identify the well with all of the information required above for the well sign.

Sincerely yours,

GEORGE H. STEWART

George H. Stewart  
Acting District Engineer

Yates Petroleum Corporation  
Iwanowski "MM" Federal #1  
1780 FNL and 560 FEL  
Section 34 - T6S - R24E  
Chaves County, New Mexico

In conjunction with Form 9-331C, Application for Permit to Drill subject well, Yates Petroleum Corporation submits the following ten items of pertinent information in accordance with USGS requirements:

1. The geologic surface formation is sandy residuum.
2. The estimate tops of geologic markers are as follows:

Glorieta	1432'	Penn	5050'
Abo	3430'	TD	5400'
Wolfcamp	4350'		
3. The estimated depths at which anticipated water, oil, or gas formations are expected to be encountered:

Water: Approximately 250' - 300'

Oil or Gas: 4400 - 5100
4. Proposed Casing Program: See Form 9-331C.
5. Pressure Control Equipment: See Form 9-331C and Exhibit B.
6. Mud Program: See Form 9-331C.
7. Auxiliary Equipment: Kelly Cock; pit level indicators and flow sensor equipment; sub with full-opening valve on floor, drill pipe connection.
8. Testing, Logging and Coring Program:

Samples: Surface casing to T.D.

DST's: As Warranted

Logging: Intermediate casing to T.D.

Coring: CNL-FDC T.D. to casing with GR-CNL on to surface and DLL from T.D. to casing.
9. No abnormal pressures to temperatures are anticipated.
10. Anticipated starting date: As soon as possible after approval.

Yates Petroleum Corporation  
Iwanowski "MM" Federal #1  
Section 34 - T6S - R24E  
1780' FNL and 560' FEL  
(Exploratory Well)

RECEIVED

JAN 23 1980

U.S. GEOLOGICAL SURVEY  
ARTESIA, NEW MEXICO

This plan is submitted with Form 9-331C, Application for a Drilling, covering the above described well. The purpose of this plan is to describe the location of the proposed well, the proposed construction activities and operations plan, the magnitude of surface disturbance involved, and the procedures to be followed in rehabilitation the surface after completion of the operations, so that a complete appraisal can be made of the environmental effect associated with the operation.

1. EXISTING ROADS.

Exhibit A is a portion of a county map showing the well and roads in the vicinity of the proposed location. The proposed wellsite is located approximately 27 miles North of Roswell, New Mexico and the access route to the location is indicated in red and green on Exhibit A.

DIRECTIONS:

1. Proceed north from Roswell on Highway 285 for a distance of approximately 27 miles.
2. Turn east for approximately 5 miles and turn south in from of Guy Craudell's place for 1 1/4 mile. The new road will start here. All existing roads will be bladed.

2. PLANNED ACCESS ROAD.

- A. The proposed new access will be approximately 1200' in length from point of origin to the south edge of the drilling pad. The road will lie in a east to west direction.
- B. The new road will be 12 feet in width (driving surface).
- C. The new road will be bladed with drainage on one side. No turnouts will be built.
- D. The route of the road is visible. The existing ranch road will be used.

3. LOCATION OF EXISTING WELL.

- A. There is drilling activity within a one-mile radius of the wellsite.

4. LOCATION OF EXISTING AND/OR PROPOSED FACILITIES.

- A. There are no production facilities on this lease at the present time.
- B. In the event that the well is productive, the necessary production facilities will be installed on the drilling pad. If the well is productive oil, a gas or diesel self-contained unit will be used to provide the necessary power. No power will be required if the well is productive of gas.



5. LOCATION AND TYPE OF WATER SUPPLY.

- A. It is planned to drill the proposed well with a fresh water system. The water will be obtained from commercial sources and will be hauled to the location by truck over the existing and proposed roads shown in the Exhibit A.

6. SOURCE OF CONSTRUCTION MATERIALS.

- A. There is no existing pit of construction material so none will be used.

7. METHODS OF HANDLING WASTE DISPOSAL.

- A. Drill cuttings will be disposed of in the reserve pits.
- B. Drilling fluids will be allowed to evaporate in the reserve pits until the pits are dry.
- C. Water produced during operations will be collected in tanks until hauled to an approved disposal system, or separate disposal application will be submitted to the USGS for appropriate approval.
- D. Oil produced during operation will be stored in tanks until sold.
- E. Current laws and regulations pertaining to the disposal of human waste will be complied with.
- F. Trash, waste paper, garbage and junk will be buried in a separate trash pit and covered with a minimum of 24 inches dirt. All waste material will be contained of prevent scattering by the wind.
- G. All trash and debris will be buried or removed from the wellsite within 30 days after finishing drilling and/or completion operations.

8. ANCILLARY FACILITIES.

- A. None required.

9. WELLSITE LAYOUT.

- A. Exhibit C shows the relative location and dimensions of the well pad, the reserve pits, etc.
- B. The location surface is sloping. Cut and fill will be required on location until pits to the NE.
- C. The reserve pits will be plastic lined.
- D. A 400' X 400' area has been staked and flagged.

10. PLANS FOR RESTORATION OF THE SURFACE.

- A. After finishing drilling and/or completion operations, all equipment and other material not needed for further operations will be removed. The location will be cleaned of all trash and junk to leave the wellsite in as aesthetically pleasing a condition as possible.

- B. Unguarded pits, if any, containing fluids will be fenced until they have dried and leveled.
- C. If the proposed well is non-productive, all rehabilitation and/or vegetation requirements of the Operator Landowner Agreement will be complied with and will be accomplished as expeditiously as possible. All pits will be filled leveled within 90 days after abandonment.

11. OTHER INFORMATION.

- A. Topography: The land surface in the vicinity of the wellsite consists of a minor draw on one side. The immediate area of the wellsite is discussed above in paragraph 9B.
- B. Flora and Fauna: The vegetation cover on wellsite consists of mesquite and miscellaneous desert growth. No wildlife was observed, but the wildlife in the area probably includes those typical of semi-arid desert land. The area is used for cattle grazing.
- C. The Pecos River is approximately 7 miles east. The location was moved out of a minor draw.
- D. There are no inhabited dwellings in the vicinity of the proposed well.
- E. Surface Ownership: The wellsite is on federal minerals and private surface.
- F. There are evidence of archeological, historical or cultural sites in the area. This is why location was moved north and east.

12. OPERATOR'S REPRESENTATIVE.

- A. The field representative responsible for assuring compliance with the approved surface use plan is:

Gliserio "Rod" Rodriguez  
Yates Petroleum Corporation  
207 South 4th Street  
Artesia, New Mexico 88210  
(505) 746-3558

13. CERTIFICATION.

I hereby certify that I, or persons under my direct supervision, have inspected the proposed drillsite and access route, that I am familiar with the conditions which presently exist; that the statements made in this plan are to the best of my knowledge, true and correct; and, that the work associated with the operations proposed herein will be preformed by Yates Petroleum Company and tis contractors and subcontractors in conformity with this plan and the terms and conditions under which it is approved.

1-21-80  
Date

Gliserio Rodriguez  
Gliserio Rodriguez, Geographer

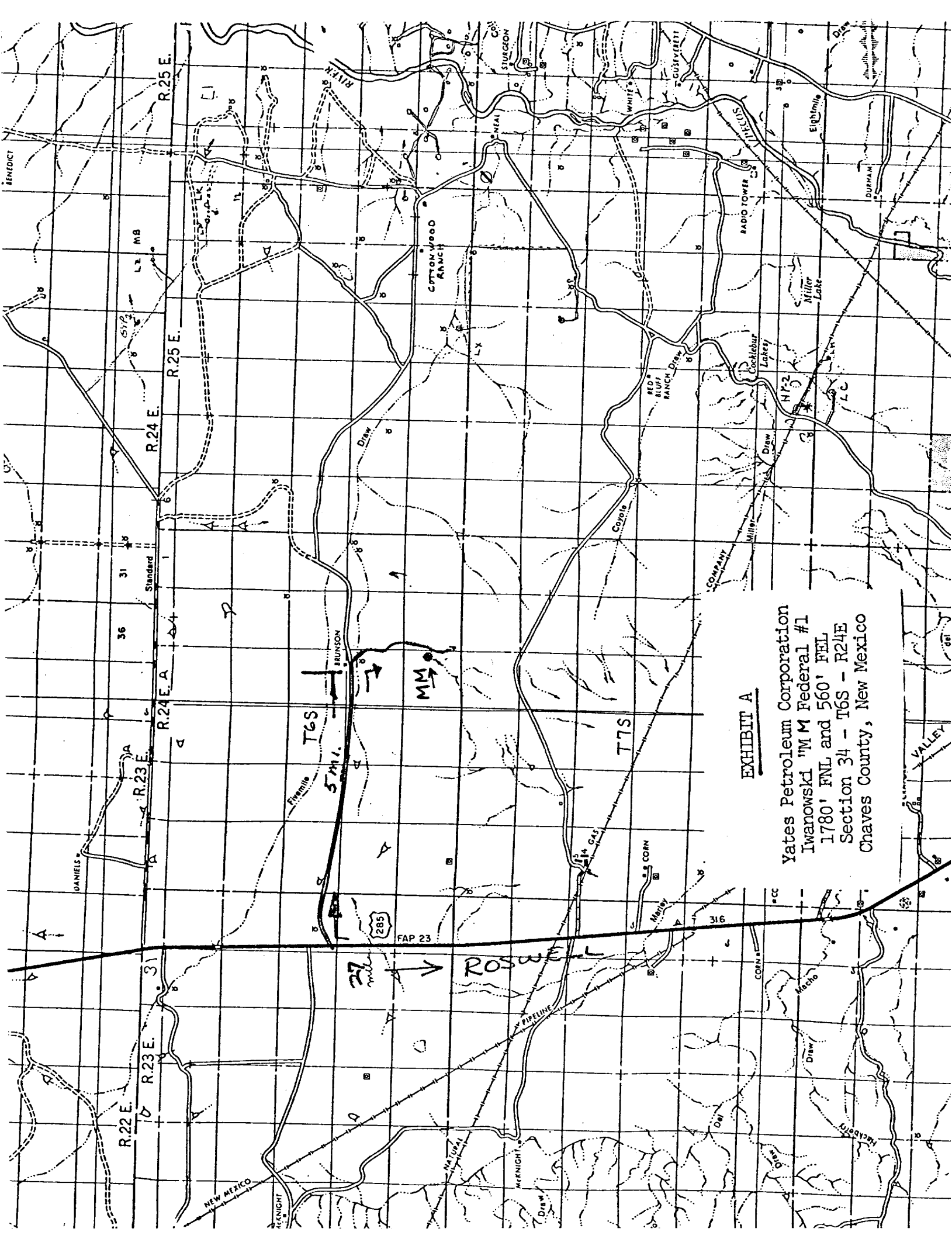
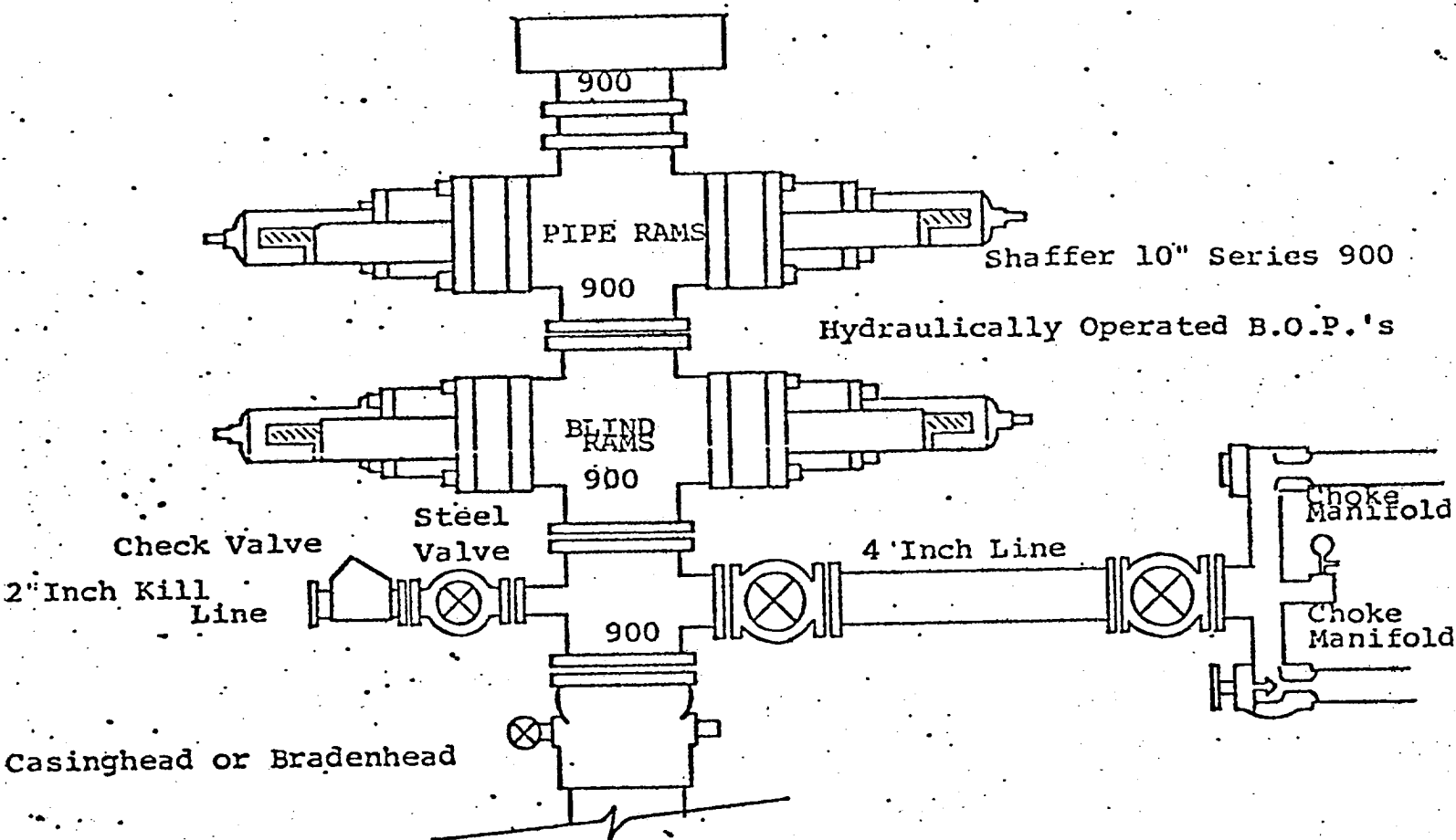


EXHIBIT A

Yates Petroleum Corporation  
Iwanowski "MM Federal #1  
1780' FNL and 560' FEL  
Section 34 - T6S - R24E  
Chaves County, New Mexico

## EXHIBIT B



### THE FOLLOWING CONSTITUTE MINIMUM BLOWOUT PREVENTER REQUIREMENTS

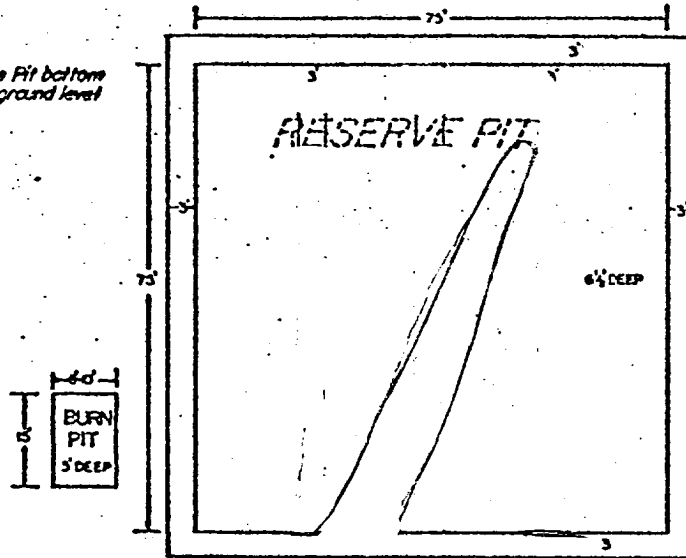
1. All preventers to be hydraulically operated with secondary manual controls installed prior to drilling out from under casing.
2. Choke outlet to be a minimum of 4" diameter.
3. Kill line to be of all steel construction of 2" minimum diameter.
4. All connections from operating manifolds to preventers to be all steel. hole or tube a minimum of one inch in diameter.
5. The available closing pressure shall be at least 15% in excess of that required with sufficient volume to operate the B.O.P.'s.
6. All connections to and from preventer to have a pressure rating equivalent to that of the B.O.P.'s.
7. Inside blowout preventer to be available on rig floor.
8. Operating controls located a safe distance from the rig floor.
9. Hole must be kept filled on trips below intermediate casing. Operator not responsible for blowouts resulting from not keeping hole full.
10. D. P. float must be installed and used below zone of first gas intrusion.

# EXHIBIT C

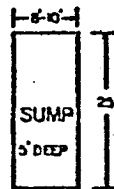
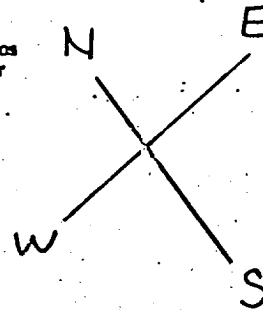
## YATES PETROLEUM CORP

0-6000 FT.

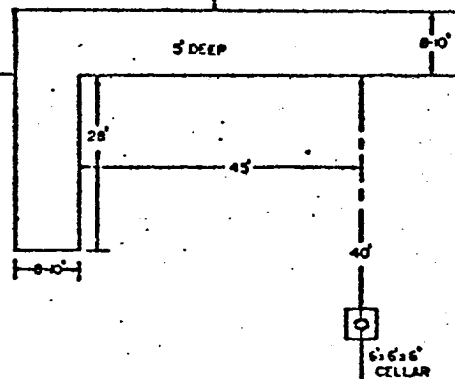
Reserve Pit bottom  
to be at ground level  
to -112.



NOTE:  
Inside walls must be as  
high and wide as outer  
walls of pit.



### PAD LAYOUT



NO SCALE



207 SOUTH FOURTH STREET  
ARTESIA, NEW MEXICO 88210

TELEPHONE (505) 746-3558

S. P. YATES  
PRESIDENT  
MARTIN YATES, III  
VICE PRESIDENT  
JOHN A. YATES  
VICE PRESIDENT  
B. W. HARPER  
SEC. TREAS

January 22, 1980

USGS  
P.O. Drawer U  
Artesia, NM 88210

Gentlemen:

RE: Iwanowski "MM" Fed. #1 Lease NM-28152

Yates Petroleum Corporation is submitting an application to drill a well on surface patented to Corn Brothers, Inc. c/o Bronson Corn, Dunlap Star Route, Roswell, NM 88201. This well will be located 1780' FNL and 560 FEL of Section 34, T6S-R24E in Chaves County.

In a telephone conversation with Mr. Bronson Corn, it was agreed that we would compensate him momentarily for the surface damaged in drilling this well.

Sincerely,

YATES PETROLEUM CORPORATION

Rod Rodriguez  
Geographer

RR/rb

RECEIVED

JAN 23 1980

U.S. GEOLOGICAL SURVEY  
ARTESIA, NEW MEXICO