

NO. OF COPIES RECEIVED	
DISTRIBUTION	
ANTA FE	1
FILE	1
U.S.G.S.	1
LAND OFFICE	
OPERATOR	1

NEW MEXICO OIL CONSERVATION COMMISSION  
RECEIVED

30-005-60647  
Form C-101  
Revised 1-1-85

JAN 31 1980

JAN 31 1980

O. C. D.

O. C. D.

ARTESIA, OFFICE

ARTESIA, OFFICE

APPLICATION FOR PERMIT TO DRILL, DEEPEN, OR PLUG BACK

1a. Type of Work		7. Unit Agreement Name	
b. Type of Well OIL WELL <input type="checkbox"/> GAS WELL <input checked="" type="checkbox"/> OTHER <input type="checkbox"/>		8. Farm or Lease Name Acme	
2. Name of Operator Mesa Petroleum Co.		9. Well No. 1	
3. Address of Operator 1000 Vaughn Building/ Midland, Texas 79701		10. Field and Pool, or Wildcat Wildcat <i>W. Camp</i>	
4. Location of Well UNIT LETTER <u>L</u> LOCATED <u>2080</u> FEET FROM THE <u>South</u> LINE AND <u>660</u> FEET FROM THE <u>West</u> LINE OF SEC. <u>29</u> TWP. <u>8S</u> RGE. <u>26E</u> NMPM		12. County Chaves	
21. Elevations (Show whether DF, RT, etc.) 3672' GR		20. Rotary or C.T. Rotary	
21A. Kind & Status Plug. Bond Blanket		22. Approx. Date Work will start May 1, 1980	
21B. Drilling Contractor Hondo			
19. Proposed Depth 4900		19A. Formation Wolfcamp	

PROPOSED CASING AND CEMENT PROGRAM

SIZE OF HOLE	SIZE OF CASING	WEIGHT PER FOOT	SETTING DEPTH	SACKS OF CEMENT	EST. TOP
17-1/2"	13-3/8"	48#	40'	Redimix	Surface
11"	8-5/8"	24#	1500'	265/200	Surface
7-7/8"	4-1/2"	10.5#	4900'	500/450	Surface or sufficient to cover pay.

Propose to drill 17-1/2" hole to 40' with rat hole machine and set 13-3/8" casing as a conductor string. Will then rig up flow line and drill 11" hole with fresh water to 1500' without BOP's and set 8-5/8" casing with centralizers on bottom three joints. Will cement with 265 sx Howco Lt + 1/4# Flocele + 2% CaCl at 12.4 ppg, tailing in with 200 sx Class "C" + 2% CaCl mixed at 14.8 ppg to circulate cement to surface. (If lost circulation is encountered will precede cement job with 200 sx thick set). Will cut off casing and install 8-5/8" SOW x 10" API 3000 psi casing head with 2" API 2500 psi ball valve and nipple up 10" API 3000 psi WP double BOP with pipe rams (bottom) and blind rams. Will test for 30 minutes at 600 psi and then drill 7-7/8" hole to TD of 4900' with fresh water and corrosion and water loss additives. Will run 4-1/2" casing with centralizers on jts 1, 3, 5, 7 and 9 and cement with 500 sx Howco Lt + 1/4# flocele + 10# salt mixed at 12.7 ppg and tail in with 450 sx 50/50 Poz mix + 2% gel + 8# salt + .3% CFR-2 mixed at 14.1 ppg. Will cut off 4-1/2" casing and nipple up 10" API 3000 psi x 6" API 3000 psi tubing spool. Operator's gas is not dedicated to a purchaser.

IN ABOVE SPACE DESCRIBE PROPOSED PROGRAM: IF PROPOSAL IS TO DEEPEN OR PLUG BACK, GIVE DATA ON PRESENT PRODUCTIVE ZONE AND PROPOSED NEW PRODUCTIVE ZONE. GIVE BLOWOUT PREVENTER PROGRAM, IF ANY.

I hereby certify that the information above is true and complete to the best of my knowledge and belief.

EXPIRES

5-6-80

Signed R. E. Mathis Title Regulatory Coordinator

Date 1-30-80

(This space for State Use)

APPROVED BY

W. A. Gussett

TITLE

SUPERVISOR, DISTRICT II

DATE

FEB 6 1980

CONDITIONS OF APPROVAL, IF ANY:

Cement must be circulated to

surface behind 8 7/8" casing

xc: NMOCD (6), MEC, TLS, JBH, JWH, PARTNERS, FILE, CENTRAL RECORDS, ACCOUNTING

**N MEXICO OIL CONSERVATION COMMISS**  
**WELL LOCATION AND ACREAGE DEDICATION PLAT**

RECEIVED

SEP 10 1979 Form C-102  
 Supersedes C-128  
 Effective 1-1-65

All distances must be from the outer boundaries of the Section

MESA-PED

Operator <b>MESA PETROLEUM CO</b>			Lease <b>ACME</b>		Well No. <b>1</b>
Section Letter <b>L</b>	Section <b>29</b>	Township <b>8 SOUTH</b>	Range <b>26 EAST</b>	County <b>CHAVES</b>	
Anterior Portage Location of Well: <b>2080</b> feet from the <b>SOUTH</b> line and <b>660</b> feet from the <b>WEST</b> line					
Ground Level Elev. <b>3672.2</b>	Producing Formation <b>Wolfcamp</b>	Pool <b>Wildcat Wolfcamp</b>		Dedicated Acreage: <b>W/2 320</b> Acres	

1. Outline the acreage dedicated to the subject well by colored pencil or have RECEIVED on the plat below.
2. If more than one lease is dedicated to the well, outline each and identify the ownership thereof (both as to working interest and royalty).
3. If more than one lease of different ownership is dedicated to the well, have One Certificates of all owners been consolidated by communitization, unitization, force-pooling, etc?

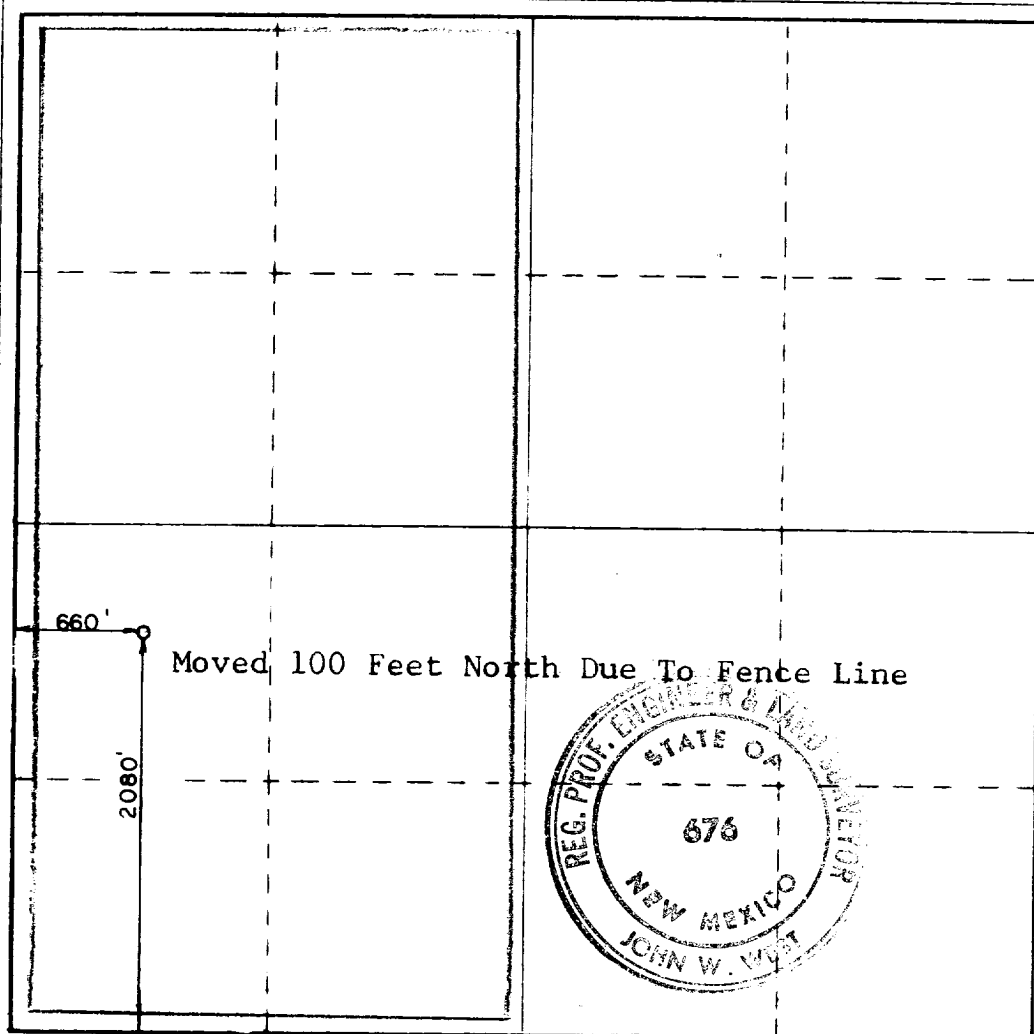
JAN 31 1980

On Certificates of all owners been consolidated by communitization, unitization, force-pooling, etc?  
 ARTESIA, OFFICE

☐ Yes ☐ No If answer is "yes," type of consolidation \_\_\_\_\_

If answer is "no," list the owners and tract descriptions which have actually been consolidated. (Use reverse side of this form if necessary.) \_\_\_\_\_

No allowable will be assigned to the well until all interests have been consolidated (by communitization, unitization, forced-pooling, or otherwise) or until a non-standard unit, eliminating such interests, has been approved by the Commission.



**CERTIFICATION**

I hereby certify that the information contained herein is true and complete to the best of my knowledge and belief.

*R. E. Mathis*

Name  
**R. E. Mathis**  
 Position  
**Regulatory Coordinator**  
 Company  
**Mesa Petroleum Co.**

Date  
**1-30-80**

I hereby certify that the well location shown on this plat was plotted from field notes of actual surveys made by me or under my supervision, and that the same is true and correct to the best of my knowledge and belief.

Date Surveyed  
**SEPTEMBER 13TH, 1979**

Registered Professional Engineer and/or Land Surveyor

*John W. West*

Certificate No. **John W. West 676**  
**Ronald J. Eidson 3239**

