

NO. OF COPIES RECEIVED	
DISTRIBUTION	
SANTA FE	1
FILE	1
U.S.G.S.	2
LAND OFFICE	1
OPERATOR	1

NEW MEXICO OIL CONSERVATION COMMISSION

FEB 22 1980

C. C. D.
ARTESIA, OFFICE

30-005-60665

Form C-101
Revised 1-1-65

5A. Indicate Type of Lease
STATE <input checked="" type="checkbox"/> FEE <input type="checkbox"/>
5. State Oil & Gas Lease No.
LG-4898

APPLICATION FOR PERMIT TO DRILL, DEEPEN, OR PLUG BACK

1a. Type of Work		7. Unit Agreement Name	
b. Type of Well OIL WELL <input type="checkbox"/> GAS WELL <input checked="" type="checkbox"/> OTHER <input type="checkbox"/>		8. Farm or Lease Name Nine Mile LV Com State	
2. Name of Operator Yates Petroleum Corporation		9. Well No. 1	
3. Address of Operator 207 South 4th Street, Artesia, New Mexico 88210		10. Field and Pool, or Wildcat Und. Buffalo Valley	
4. Location of Well UNIT LETTER I LOCATED 1650 FEET FROM THE South LINE AND 990 FEET FROM THE East LINE OF SEC. 31 TWP. 14S RGE. 28E NMPM		12. County Chaves	
21. Elevations (Show whether DF, RT, etc.) 3530.8		22. Approx. Date Work will start ASAP	
21A. Kind & Status Plug. Bond Blanket		21B. Drilling Contractor	
19. Proposed Depth 8620 6020		19A. Formation Morrow	
20. Rotary or C.T. Rotary			

23.

PROPOSED CASING AND CEMENT PROGRAM

SIZE OF HOLE	SIZE OF CASING	WEIGHT PER FOOT	SETTING DEPTH	SACKS OF CEMENT	EST. TOP
17 1/2	13 3/8	48# J-55	300'	175	circulate
12 1/4	8 5/8	24# J-55	1700'	500	circulate
7 7/8	5 1/2 or 4 1/2	15.5#-17# K-55 10.5 - 11.6#	TD		

We propose to drill and test the Pennsylvanian and intermediate horizons. Approximately 300' of surface casing will be run and cement circulated to shut off gravel and caving. Intermediate casing will be set 100' below the Artesian Water Zone and cemented to the surface. If commercial pay is encountered, will run 5 1/2 or 4 1/2" casing and cement with 600' of cover, perforate and stimulate as needed.

MUD PROGRAM: FW gel & LCM to 1700', fresh water to 5100', KCL water to 6900', starch-driskak KCL to 7800', flosal-driskak-KCL mud to TD: MW 8.9-9.0, Vis 34-39, WL 10-7.

BOP PROGRAM: BOP's and hydril on the 8-5/8" casing and tested, pipe rams on trips, Yellow Jacket prior to drilling Wolfcamp.

GAS NOT DEDICATED.

APPROVAL VALID
FOR 90 DAYS, UNLESS
DRILLING COMMENCED,
EXPIRES 5-25-80

IN ABOVE SPACE DESCRIBE PROPOSED PROGRAM: IF PROPOSAL IS TO DEEPEN OR PLUG BACK, GIVE DATA ON PRESENT PRODUCTIVE ZONE AND PROPOSED NEW PRODUCTIVE ZONE. GIVE BLOWOUT PREVENTER PROGRAM, IF ANY.

I hereby certify that the information above is true and complete to the best of my knowledge and belief.

Signed Glenn R. Roberts Title Geographer Date 2/20/80

(This space for State Use)

APPROVED BY W. A. Gussert TITLE SUPERVISOR, DISTRICT II DATE FEB 25 1980

CONDITIONS OF APPROVAL, IF ANY:

NEW MEXICO OIL CONSERVATION COMMISSION
WELL LOCATION AND ACREAGE DEDICATION PLAT

Form C-102
Supersedes C-128
Effective 1-1-65

All distances must be from the outer boundaries of the Section.

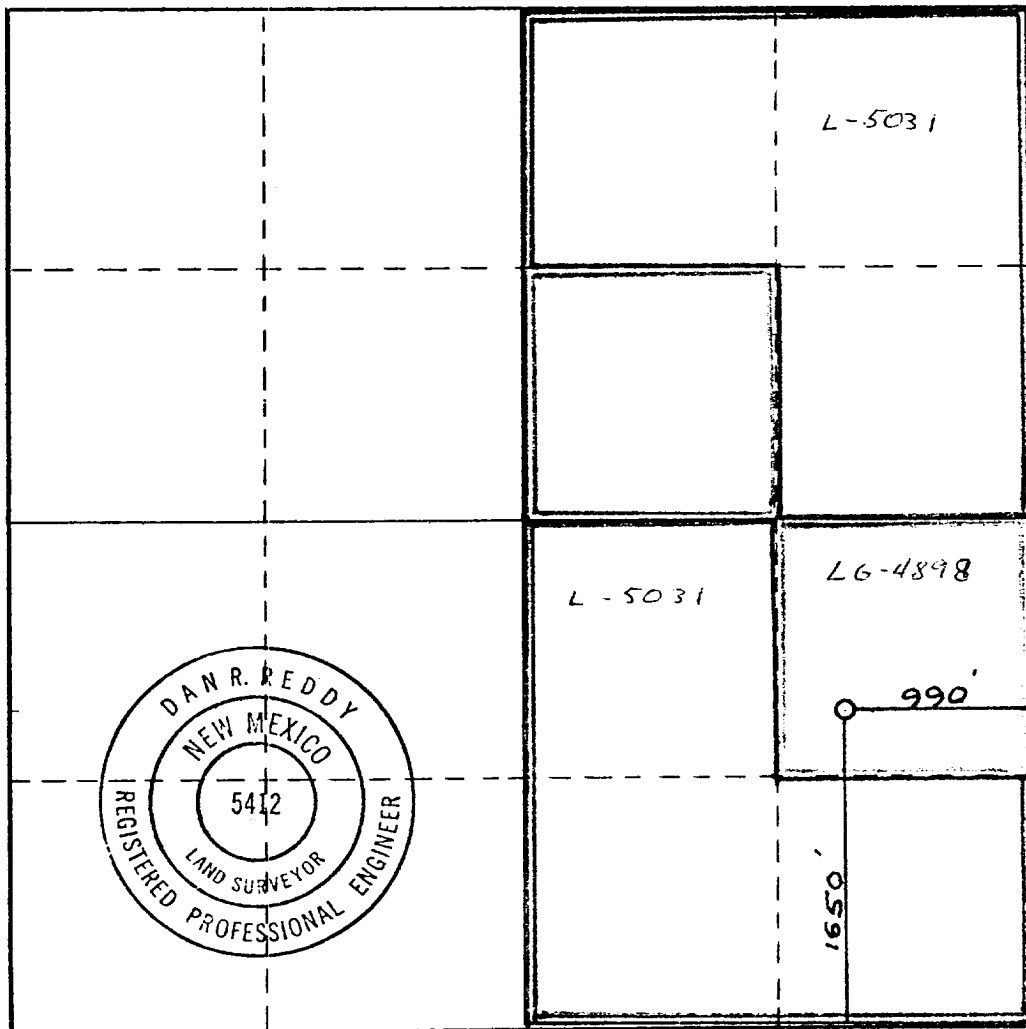
Operator YATES PETROLEUM CORPORATION		Lease Nine Mile LV State Com		Well No. 1
Unit Letter I	Section 31	Township 14 South	Range 28 East	County Eddy
Actual Footage Location of Well: 1650 feet from the South line and 990 feet from the East line				
Ground Level Elev. 3530.8	Producing Formation MCCORMICK	Pool und BUFFALO CREEK Penn.	Dedicated Acreage: 320 Acres	

1. Outline the acreage dedicated to the subject well by colored pencil or hachure marks on the plat below.
2. If more than one lease is dedicated to the well, outline each and identify the ownership thereof (both as to working interest and royalty).
3. If more than one lease of different ownership is dedicated to the well, have the interests of all owners been consolidated by communitization, unitization, force-pooling, etc?

☒ Yes ☐ No If answer is "yes," type of consolidation COMMUNITIZATION

If answer is "no," list the owners and tract descriptions which have actually been consolidated. (Use reverse side of this form if necessary.) _____

No allowable will be assigned to the well until all interests have been consolidated (by communitization, unitization, forced-pooling, or otherwise) or until a non-standard unit, eliminating such interests, has been approved by the Commission.



CERTIFICATION

I hereby certify that the information contained herein is true and complete to the best of my knowledge and belief.

Gliserio Rodriguez
Name

GLISERIO RODRIGUEZ

Position

GEOGRAPHER

Company

YATES PETROLEUM CORP.

Date

2-14-80

I hereby certify that the well location shown on this plat was plotted from field notes of actual surveys made by me or under my supervision, and that the same is true and correct to the best of my knowledge and belief.

Date Surveyed

Feb. 8, 1980

Registered Professional Engineer and/or Land Surveyor

Dan R. Reddy
Certificate No.

NM PE&LS #5412

Rotating head if necessary
2" Fill up Line

ROTATING
BOP
2000 psi

Flowline

ANNULAR BOP

(Hydrill)

EXHIBIT B

900

PIPE RAMS

900

Shaffer 10" Series 900

Hydraulically Operated B.O.P.'s

BLIND
RAMS

900

Check Valve

Steel
Valve

2" Inch Kill
Line

4" Inch Line

Choke
Manifold

Choke
Manifold

900

Casinghead or Bradenhead

THE FOLLOWING CONSTITUTE MINIMUM BLOWOUT PREVENTER REQUIREMENTS

1. All preventers to be hydraulically operated with secondary manual controls installed prior to drilling out from under casing.
2. Choke outlet to be a minimum of 4" diameter.
3. Kill line to be of all steel construction of 2" minimum diameter.
4. All connections from operating manifolds to preventers to be all steel. hole or tube a minimum of one inch in diameter.
5. The available closing pressure shall be at least 15% in excess of that required with sufficient volume to operate the B.O.P.'s.
6. All connections to and from preventer to have a pressure rating equivalent to that of the B.O.P.'s.
7. Inside blowout preventer to be available on rig floor.
8. Operating controls located a safe distance from the rig floor.
9. Hole must be kept filled on trips below intermediate casing. Operator not responsible for blowouts resulting from not keeping hole full.
10. D. P. float must be installed and used below zone of first gas intrusion.