

NO. OF COPIES RECEIVED	
DISTRIBUTION	
SANTA FE	1
FILE	1
U.S.G.S.	2
LAND OFFICE	1
OPERATOR	1

NEW MEXICO OIL CONSERVATION COMMISSION

30-005-60669
Form C-101
Revised 1-1-65

5A. Indicate Type of Lease
STATE <input checked="" type="checkbox"/> FEE <input type="checkbox"/>
5. State Oil & Gas Lease No.
LG 563

APPLICATION FOR PERMIT TO DRILL, DEEPEN, OR PLUG BACK

1a. Type of Work		7. Unit Agreement Name	
b. Type of Well OIL WELL <input type="checkbox"/> GAS WELL <input checked="" type="checkbox"/> OTHER <input type="checkbox"/>		8. Farm or Lease Name Smernoff "NL" State	
2. Name of Operator Yates Petroleum Corporation		9. Well No. 1	
3. Address of Operator 207 South 4th Street Artesia N.M. 88210		10. Field and Pool, or Wildcat Wildcat Abo	
4. Location of Well UNIT LETTER B LOCATED 660 FEET FROM THE North LINE AND 1980 FEET FROM THE East LINE OF SEC. 2 TWP. 5S. RGE. 24E NMPM		12. County Chaves	
19. Proposed Depth approx. 4300'		19A. Formation Abo	
20. Rotary or C.T. Rotary		21. Elevations (Show whether DF, RT, etc.) 3974'	
21A. Kind & Status Plug. Bond Blanket		21B. Drilling Contractor LaRue Drilling	
22. Approx. Date Work will start ASAP			

23.

PROPOSED CASING AND CEMENT PROGRAM

SIZE OF HOLE	SIZE OF CASING	WEIGHT PER FOOT	SETTING DEPTH	SACKS OF CEMENT	EST. TOP
17 1/2	13 3/8"	48# J-55	approx. 400	350 sx	Circulate
12 1/2	8 5/8"	24# J-55	approx. 1500'	800 sx	Circulate
8 7/8"	5 1/2 or 4 1/2"	15.5 or 10.5#	TD		

We propose to drill and test the Abo and intermediate formation. Approximately 400' of surface casing will be set and cement circulated to shut off gravel and caving. Casing will be set 100' below the water zone. If commercial, 5 1/2 or 4 1/2 production casing will be run and cemented with an adequate cover, perforate and stimulate as needed for production.

8 7/8" will be set only if hole conditions require same

MUD PROGRAM: FW gel and LCM to 1500', Brine KCL to 3300', KCL Drispak & starch to 4250', flosal-driskpak KCL to TD. NW 10-10.2, Vis 34 - 39, WL 14 - 7

BOP PROGRAM: BOP's will be installed on 8 5/8" casing and tested

GAS NOT DEDICATED.

APPROVAL FEE
\$100.00
EXPIRES 6-3-80

IN ABOVE SPACE DESCRIBE PROPOSED PROGRAM: IF PROPOSAL IS TO DEEPEN OR PLUG BACK, GIVE DATA ON PRESENT PRODUCTIVE ZONE AND PROPOSED NEW PRODUCTIVE ZONE. GIVE BLOWOUT PREVENTER PROGRAM, IF ANY.

I hereby certify that the information above is true and complete to the best of my knowledge and belief.

Signed Eddie L. Matlock Title Engineer Date 2/28/80

(This space for State Use)

APPROVED BY W.A. Gassett TITLE SUPERVISOR, DISTRICT II DATE 3/1/80
CONDITIONS OF APPROVAL, IF ANY:

NE., MEXICO OIL CONSERVATION COMMISSION
WELL LOCATION AND ACREAGE DEDICATION PLAT

Form C-102
Supersedes C-128
Effective 1-1-65

All distances must be from the outer boundaries of the Section.

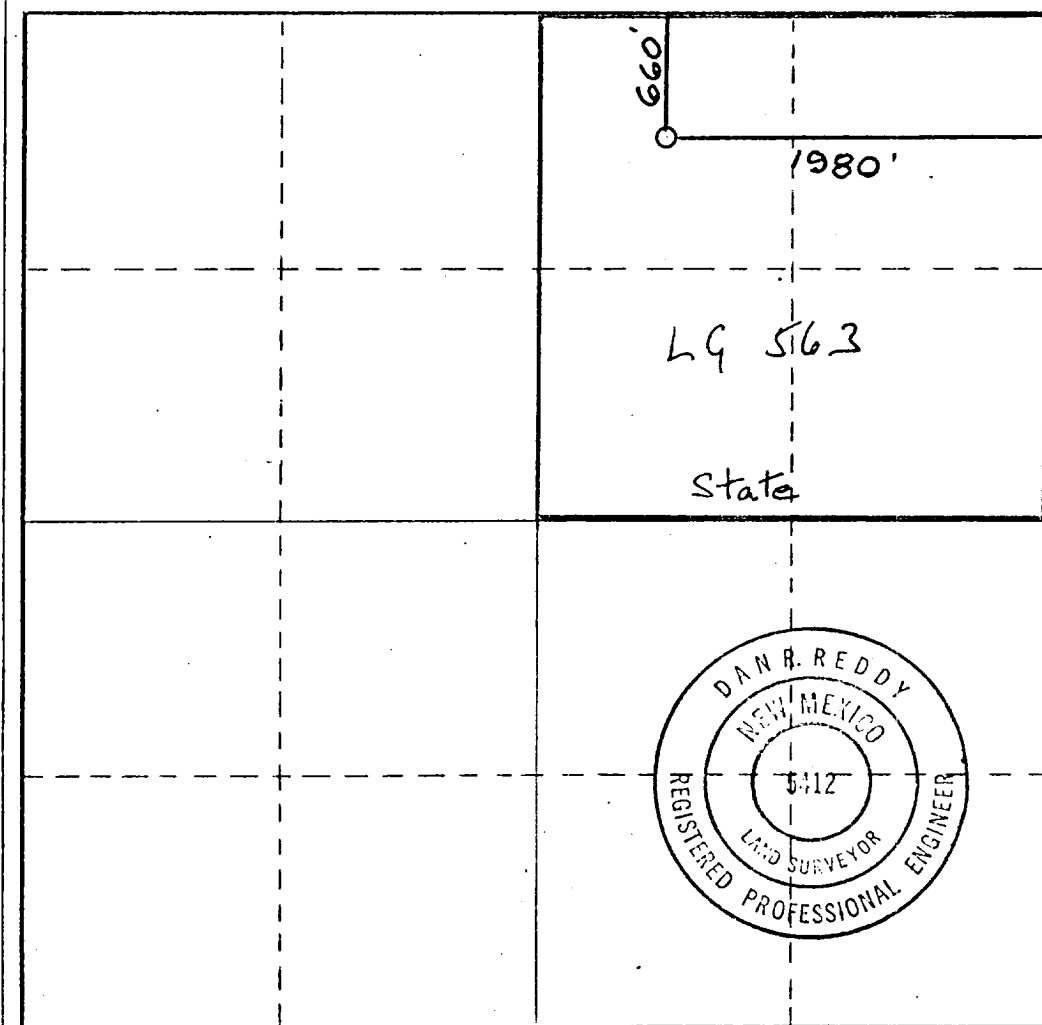
Operator Yates Petroleum Corporation		Lease Smernoff NL State		Well No. 1
Unit Letter B	Section 2	Township 5 South	Range 24 East	County Chaves
Actual Footage Location of Well:				
660 feet from the North line and		1980 feet from the East line		
Ground Level Elev. 3974	Producing Formation Abo	Pool Under Wildcat Hbo	Dedicated Acreage: 160 Acres	

- Outline the acreage dedicated to the subject well by colored pencil or hachure marks on the plat below.
- If more than one lease is dedicated to the well, outline each and identify the ownership thereof (both as to working interest and royalty).
- If more than one lease of different ownership is dedicated to the well, have the interests of all owners been consolidated by communitization, unitization, force-pooling, etc?

☐ Yes ☐ No If answer is "yes," type of consolidation _____

If answer is "no," list the owners and tract descriptions which have actually been consolidated. (Use reverse side of this form if necessary.) _____

No allowable will be assigned to the well until all interests have been consolidated (by communitization, unitization, forced-pooling, or otherwise) or until a non-standard unit, eliminating such interests, has been approved by the Commission.



CERTIFICATION

I hereby certify that the information contained herein is true and complete to the best of my knowledge and belief.

Eddie M. Mahfood
Name
Eddie M. Mahfood

Position
Engineer

Company
Yates Petroleum Corporation

Date
February 29, 1980

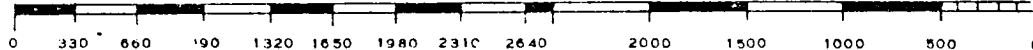
I hereby certify that the well location shown on this plat was plotted from field notes of actual surveys made by me or under my supervision, and that the same is true and correct to the best of my knowledge and belief.

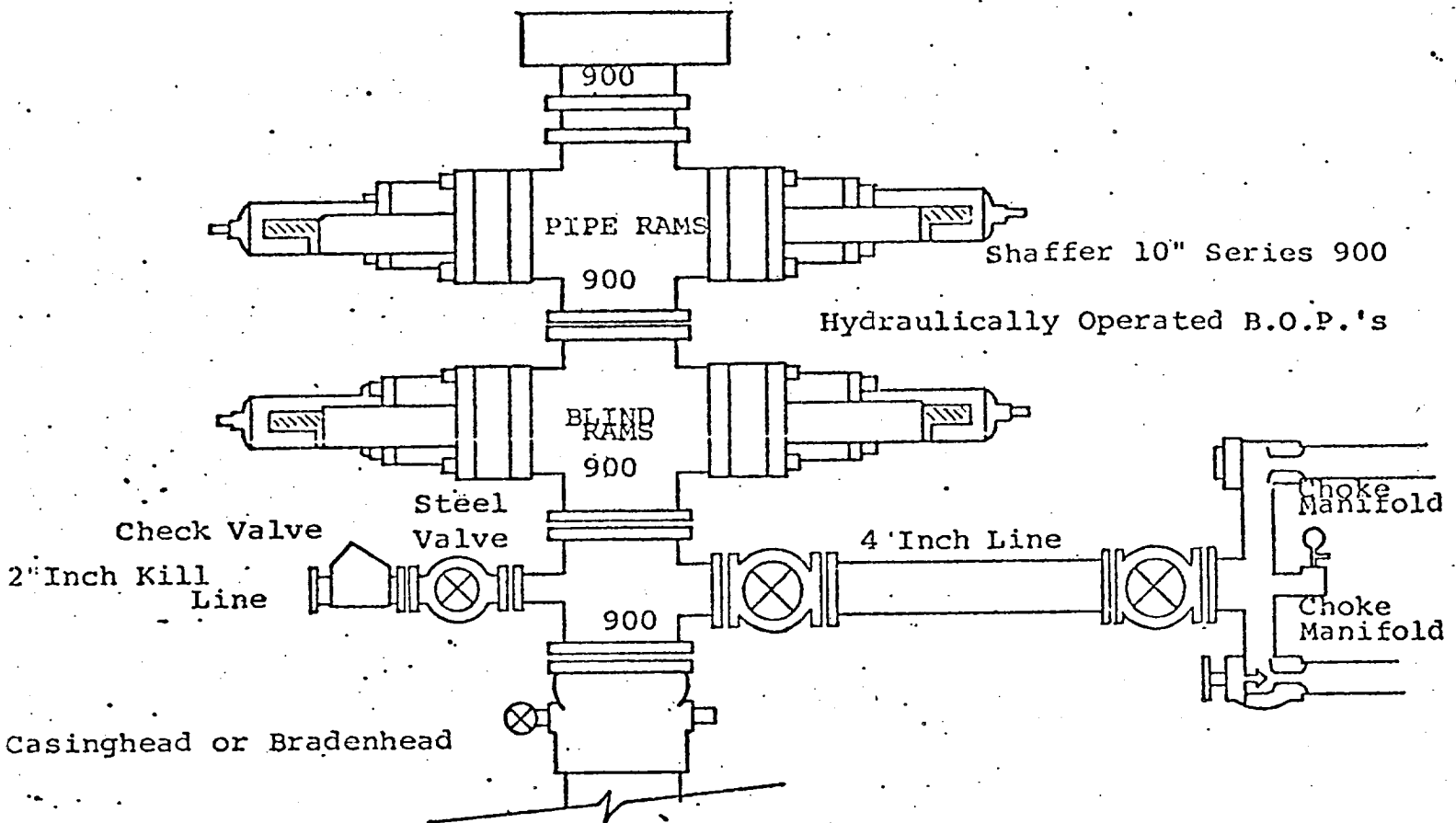
Date Surveyed
2/29/80

Registered Professional Engineer and/or Land Surveyor

Dan R. Reddy
Certificate No.

NMPE&LS #5412





THE FOLLOWING CONSTITUTE MINIMUM BLOWOUT PREVENTER REQUIREMENTS

1. All preventers to be hydraulically operated with secondary manual controls installed prior to drilling out from under casing.
2. Choke outlet to be a minimum of 4" diameter.
3. Kill line to be of all steel construction of 2" minimum diameter.
4. All connections from operating manifolds to preventers to be all steel. hole or tube a minimum of one inch in diameter.
5. The available closing pressure shall be at least 15% in excess of that required with sufficient volume to operate the B.O.P.'s.
6. All connections to and from preventer to have a pressure rating equivalent to that of the B.O.P.'s.
7. Inside blowout preventer to be available on rig floor.
8. Operating controls located a safe distance from the rig floor.
9. Hole must be kept filled on trips below intermediate casing. Operator not responsible for blowouts resulting from not keeping hole full.
10. D. P. float must be installed and used below zone of first gas intrusion.