

UNITED STATES
DEPARTMENT OF THE INTERIOR
GEOLOGICAL SURVEY

30-005-60682

APPLICATION FOR PERMIT TO DRILL, DEEPEN, OR PLUG BACK

1a. TYPE OF WORK DRILL <input checked="" type="checkbox"/> DEEPEN <input type="checkbox"/> PLUG BACK <input type="checkbox"/>		5. LEASE DESIGNATION AND SERIAL NO. USA-NM 11799	
b. TYPE OF WELL OIL WELL <input type="checkbox"/> GAS WELL <input checked="" type="checkbox"/> OTHER <input type="checkbox"/>		6. IF INDIAN, ALLOTTEE OR TRIBE NAME	
2. NAME OF OPERATOR Yates Petroleum Corporation		7. UNIT AGREEMENT NAME	
3. ADDRESS OF OPERATOR 207 South 4th Street, Artesia, NM 88210		8. FARM OR LEASE NAME Hahn "NH" Federal	
4. LOCATION OF WELL (Report location clearly and in accordance with any State requirements.) At surface 1980' FSL and 660' FEL At proposed prod. zone		9. WELL NO. 1	
14. DISTANCE IN MILES AND DIRECTION FROM NEAREST TOWN OR POST OFFICE* Approx. 29 miles N NE of Roswell, NM 88201		10. FIELD AND POOL, OR WILDCAT	
15. DISTANCE FROM PROPOSED* LOCATION TO NEAREST PROPERTY OR LEASE LINE, FT. (Also to nearest drlg. unit line, if any) 660'		11. SEC., T., R., M., OR BLK. AND SURVEY OR AREA Sec. 9-T7S-R25E	
16. NO. OF ACRES IN LEASE 640		12. COUNTY OR PARISH Chaves	
17. NO. OF ACRES ASSIGNED TO THIS WELL 320		13. STATE NM	
18. DISTANCE FROM PROPOSED LOCATION* TO NEAREST WELL, DRILLING, COMPLETED, OR APPLIED FOR, ON THIS LEASE, FT. 5200		20. ROTARY OR CABLE TOOLS Rotary	
21. ELEVATIONS (Show whether DF, RT, GR, etc.) 3864.8		22. APPROX. DATE WORK WILL START* As soon as approved	

23. PROPOSED CASING AND CEMENTING PROGRAM				
SIZE OF HOLE	SIZE OF CASING	WEIGHT PER FOOT	SETTING DEPTH	QUANTITY OF CEMENT
17½	13 3/8"	48# J-55	approx. 350'	350 sx circulate
12½	8 5/8"	24# J-55	approx. 1600'	850 sx circulate
8 3/4" or 7 7/8"	5½ or 4½"	15.5 or 10.5#	TD	

We propose to drill and test the Penn and intermediate formations. Approximately 350' of surface casing will be set and cement circulated to shut off grave and caving. Intermediate casing will be run only if needed. If commercial, 4½ production casing will be run and cemented with an adequate cover, perforate and stimulate as needed for production.

MUD PROGRAM: Gel and LCM to 1600', if hole is cased, Brine KCL to 3200', KCL drispak & starch to 4300', flosal-driskak KCL to TD. MW 10-10.2, Vis. 34-39, WL 14-7.

BOP PROGRAM: BOP's will be installed on 8 5/8" casing and tested daily.

GAS NOT DEDICATED.

IN ABOVE SPACE DESCRIBE PROPOSED PROGRAM: If proposal is to deepen or plug back, give data on present productive zone and proposed new productive zone. If proposal is to drill or deepen directionally, give pertinent data on subsurface locations and measured and true vertical depths. Give blowout preventer program, if any.

24. SIGNED Alicia K. Kelly TITLE Geographer DATE 3/3/80
(This space for Federal or State office use)

PERMIT NO. _____ APPROVAL DATE 3-17-80

APPROVED BY _____ TITLE _____ DATE _____
CONDITIONS OF APPROVAL, IF ANY:

NEW MEXICO OIL CONSERVATION COMMISSION
WELL LOCATION AND ACREAGE DEDICATION PLAT

Form C-102
Supersedes C-128
Effective 1-1-65

All distances must be from the outer boundaries of the Section.

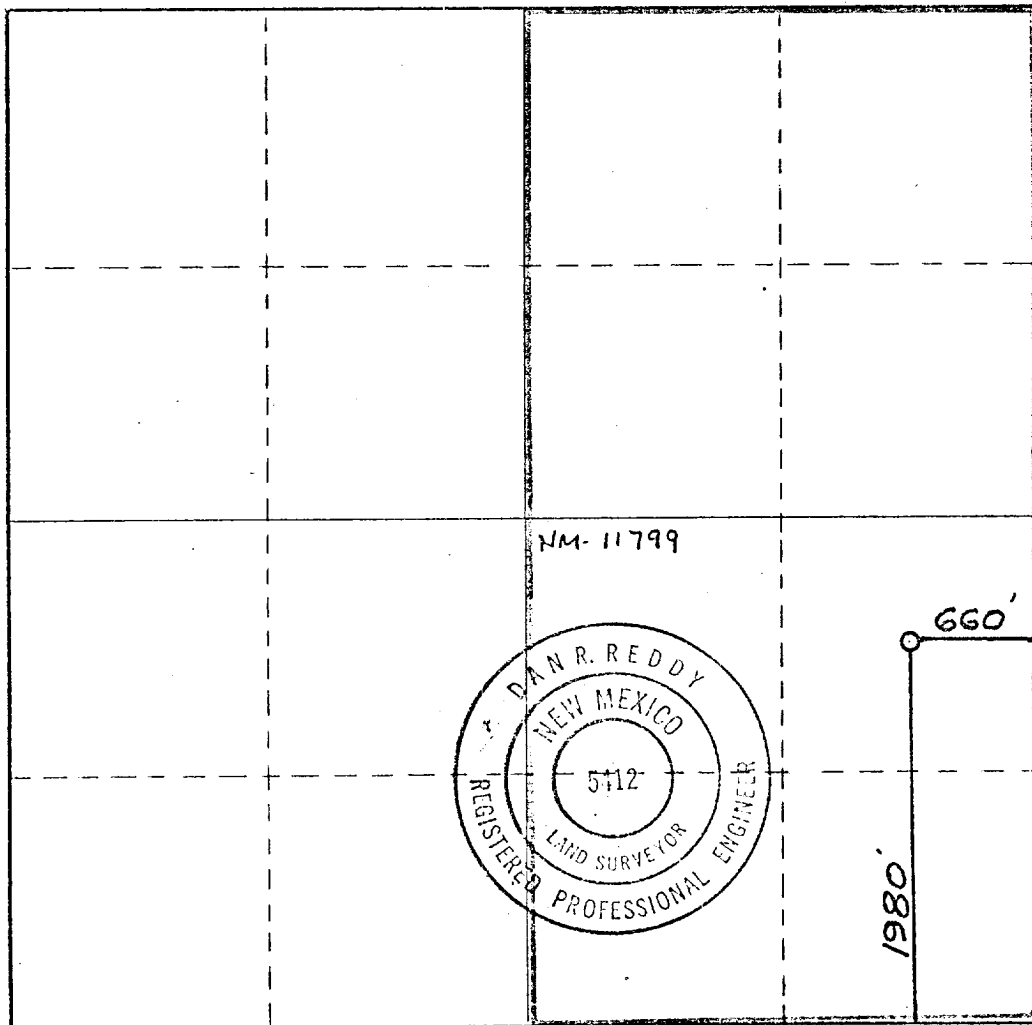
Operator YATES PETROLEUM CORPORATION			Lease Hahn NH Federal		Well No. 1
Unit Letter I	Section 9	Township 7 South	Range 25 East	County Chaves	
Actual Footage Location of Well: 660 feet from the East line and 1980 feet from the South line					
Ground Level Elev. 3864.8	Producing Formation PENN		Pool WILDCAT	Dedicated Acreage: 320 Acres	

1. Outline the acreage dedicated to the subject well by colored pencil or hachure marks on the plat below.
2. If more than one lease is dedicated to the well, outline each and identify the ownership thereof (both as to working interest and royalty).
3. If more than one lease of different ownership is dedicated to the well, have the interests of all owners been consolidated by communitization, unitization, force-pooling, etc?

☐ Yes ☐ No If answer is "yes," type of consolidation _____

If answer is "no," list the owners and tract descriptions which have actually been consolidated. (Use reverse side of this form if necessary.) _____

No allowable will be assigned to the well until all interests have been consolidated (by communitization, unitization, forced-pooling, or otherwise) or until a non-standard unit, eliminating such interests, has been approved by the Commission.



CERTIFICATION

I hereby certify that the information contained herein is true and complete to the best of my knowledge and belief.

Gliserio Rodriguez
Name

GLISERIO RODRIGUEZ
Position

GEOGRAPHER

Company

YATES PETROLEUM CORP

Date

3-3-80

I hereby certify that the well location shown on this plat was plotted from field notes of actual surveys made by me or under my supervision, and that the same is true and correct to the best of my knowledge and belief.

Date Surveyed

2/23/80

Registered Professional Engineer and/or Land Surveyor

Dan R. Reddy
Certificate No.

NMPE&LS #5412

0 330 660 990 1320 1650 1980 2310 2640 2000 1500 1000 500 0



N.M.O.C.D. COPY

United States Department of the Interior

GEOLOGICAL SURVEY

P. O. Drawer U
Artesia, New Mexico 88210

RECEIVED
MAR 18 1980

O. C. D.
ARTESIA, OFFICE
March 17, 1980

Yates Petroleum Corporation
207 South Fourth Street
Artesia, New Mexico 88210

Gentlemen:

YATES PETROLEUM CORPORATION
Hahn "NH" Fed No. 1
1980 FSL 660 FEL Sec. 9 T.7S R.25E
Chaves County Lease No. NM 11799

Above Data Required on Well Sign

Your APPLICATION FOR PERMIT TO DRILL the above-described well to a depth of 5,200 feet to test the Penn is hereby approved subject to compliance with the OIL AND GAS OPERATING REGULATIONS (30 CFR 221) and the following conditions:

1. Drilling operations authorized are subject to compliance with the attached General Requirements for Oil and Gas Operations on Federal Leases, dated July 1, 1978.
2. Prior to commencing construction of road, pad, or other associated developments, operator will provide the dirt contractor with a copy of the Surface Use Plan and these Conditions of Approval including the attached General Requirements.
3. All access roads will be limited to a 12 foot wide driving surface, excluding turnarounds. Surface disturbance associated with road construction will be limited to 20 feet in width.
4. Submit a Daily Report of Operations from spud date until the well is completed and the Well Completion Report (form 9-330) is filed. The report should not be less than 8" x 5" in size and each page should identify the well.
5. All permanent above-ground structures and equipment shall be painted in accordance with the attached Painting Guidelines. The color used should simulate Sandstone Brown (Federal Standard No. 595A, color 20318 or 30318).
6. Before drilling below the 8-5/8" casing, the blowout preventer assembly will consist of a minimum of one annular type and two ram type preventers.
7. A kelly cock will be installed and maintained in operable condition.

8. After setting the 8-5/8" casing string and before drilling into the Wolfcamp formation, the blowout preventers and related control equipment shall be pressure tested to rated working pressures by an independent service company. Any equipment failing to test satisfactorily shall be repaired or replaced. This office should be notified in sufficient time for a representative to witness the tests and shall be furnished a copy of the pressure test report.
9. Mud system monitoring equipment, with derrick floor indicators and visual and audio alarms, shall be installed and operating before drilling into the Wolfcamp formation and used until production casing is run and cemented. Monitoring equipment shall consist of the following:
 - (1) A recording pit level indicator to determine pit volume gains and losses.
 - (2) A mud volume measuring device for accurately determining mud volume necessary to fill the hole on trips.
 - (3) A flow sensor on the flow-line to warn of any abnormal mud returns from the well.
10. Notify the Survey by telephone 24 hours prior to spudding well.
11. Notify the Survey in sufficient time to witness the cementing of the 8-5/8" casing.
12. Cement behind the 13-3/8" and 8-5/8" casing must be circulated.
13. Please have anyone contacting the Survey in regard to this well to identify the well with all of the information required above for the well sign.

Sincerely yours,

George H. Stewart
Acting District Engineer

Yates Petroleum Corporation
Hahn "NH" Federal #1
1980' FSL and 660' FEL
Section 9 - T7S - R25E
Chaves County, New Mexico

In conjunction with Form 9-331C, Application for Permit to Drill subject well, Yates Petroleum Corporation submits the following ten items of pertinent information in accordance with USGS requirements:

1. The geologic surface formation is sandy residuum.
2. The estimate tops of geologic markers are as follows:

San Andres	585'	Penn	4865'
Glorieta	1569'	TD	5200'
Abo	3665'		
Wolfcamp	4285'		

3. The estimated depths at which anticipated water, oil, or gas formations are expected to be encountered:

Water: Approximately 275

Oil or Gas: 3680', 4900'

4. Proposed Casing Program: See Form 9-331C.
5. Pressure Control Equipment: See Form 9-331C and Exhibit B.
6. Mud Program: See Form 9-331C.
7. Auxiliary Equipment: Kelly Cock; pit level indicators and flow sensor equipment; sub with full-opening valve on floor, drill pipe connection.
8. Testing, Logging and Coring Program:

Samples: Surface casing to TD.
DST's: As Warranted
Logging: Intermediate casing to TD.
CNL-FDC TD to casing with GR-CNL on to surface and
DLL from TD to casing.

Coring: None
9. No abnormal pressures or temperatures are anticipated.
10. Anticipated starting date: As soon as possible after approval.

MULTI-POINT SURFACE USE AND OPERATIONS PLAN

Yates Petroleum Corporation
Hahn "NH" Federal #1
Section 9 - T7S - R25E
1980' FSL and 660' FEL
(Exploratory Well)

This plan is submitted with Form 9-331C, Application for Permit to Drill, covering the above described well. The purpose of this plan is to describe the location of the proposed well, the proposed construction activities and operations plan, the magnitude of surface disturbance involved, and the procedures to be followed in rehabilitating the surface after completion of the operations, so that a complete appraisal can be made of the environmental effect associated with the operation.

1. EXISTING ROADS.

Exhibit A is a portion of a county map showing the well and roads in the vicinity of the proposed location. The proposed wellsite is located approximately 30 miles NNE of Roswell, New Mexico and the access route to the location is indicated in red and green on Exhibit A.

DIRECTIONS:

1. Proceed north from Roswell on Highway 285 for a distance of approximately 13 miles.
2. Turn east for approximately 2½ miles and continue NE for 11 miles. Turn west at the "Potter" corral, go for 1.15 mile on the existing ranch road. Then turn due west - new road starts here.

2. PLANNED ACCESS ROAD.

- A. The proposed new access will be approximately ¾ of a mile in length from point of origin to the southeast edge of the drilling pad. The road will lie in a east-to-west direction.
- B. The new road will be 12 feet in width (driving surface).
- C. The new road will be bladed with drainage on one side. Two turnouts will be built.
- D. The route of the road is visible. The existing ranch road will be used for a ¼ mile.

3. LOCATION OF EXISTING WELL.

- A. There is drilling activity a mile from the wellsite.

4. LOCATION OF EXISTING AND/OR PROPOSED FACILITIES.

- A. There are no production facilities on this lease at the present time.
- B. In the event that the well is productive, the necessary production facilities will be installed on the drilling pad. If the well is productive oil, a gas or diesel self-contained unit will be used to provide the necessary power. No power will be required if the well is productive of gas.

5. LOCATION AND TYPE OF WATER SUPPLY.

- A. It is planned to drill the proposed well with a fresh water system. The water will be obtained from commercial sources and will be hauled to the location by truck over the existing and proposed roads shown in Exhibit A.

6. SOURCE OF CONSTRUCTION MATERIALS.

- A. There is no existing pit of construction material so none will be used.

7. METHODS OF HANDLING WASTE DISPOSAL.

- A. Drill cuttings will be disposed of in the reserve pits.
- B. Drilling fluids will be allowed to evaporate in the reserve pits until the pits are dry.
- C. Water produced during operations will be collected in tanks until hauled to an approved disposal system, or separate disposal application will be submitted to the USGS for appropriate approval.
- D. Oil produced during operation will be stored in tanks until sold.
- E. Current laws and regulations pertaining to the disposal of human waste will be complied with.
- F. Trash, waste paper, garbage and junk will be buried in a separate trash pit and covered with a minimum of 24 inches dirt. All waste material will be contained of prevent scattering by the wind.
- G. All trash and debris will be buried or removed from the wellsite within 30 days after finishing drilling and/or completion operations.

8. ANCILLARY FACILITIES.

- A. None required.

9. WELLSITE LAYOUT.

- A. Exhibit C shows the relative location and dimensions of the well pad, the reserve pits, etc.
- B. The location surface is almost flat. No cut and fill will be required on location.
- C. The reserve pits will be plastic lined.
- D. A 400' X 400' area has been staked and flagged.

10. PLANS FOR RESTORATION OF THE SURFACE.

- A. After finishing drilling and/or completion operations, all equipment and other material not needed for further operations will be removed. The location will be cleaned of all trash and junk to leave the wellsite in as aesthetically pleasing a condition as possible.

- B. Unguarded pits, if any, containing fluids will be fenced until they have dried and leveled.
- C. If the proposed well is non-productive, all rehabilitation and/or vegetation requirements of the USGS and the BLM will be complied with and will be accomplished as expeditiously as possible. All pits will be filled leveled within 90 days after abandonment.

11. OTHER INFORMATION.

- A. Topography: The land surface in the vicinity of the wellsite is all flat. The immediate area of the wellsite is discussed above in paragraph 9B.
- B. Flora and Fauna: The vegetation cover on wellsite consists of mesquite and miscellaneous desert growth. No wildlife was observed, but the wildlife in the area probably includes those typical of semi-arid desert land. The area is used for cattle grazing.
- C. The Pecos River is approximately 4.5 miles. Five Mile Draw is approximately 2.0 miles northeast of drill site.
- D. There are no inhabited dwellings in the vicinity of the proposed well.
- E. Surface Ownership: The wellsite is on federal minerals and surface.
- F. There is evidence of any archaeological, historical or cultural sites in the area.

12. OPERATOR'S REPRESENTATIVE.

- A. The field representative responsible for assuring compliance with the approved surface use plan is:

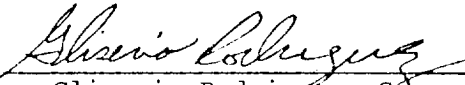
Gliserio "Rod" Rodriguez
Yates Petroleum Corporation
207 South 4th Street
Artesia, New Mexico 88210
(505) 746-3558

13. CERTIFICATION.

I hereby certify that I, or persons under my direct supervision, have inspected the proposed drillsite and access route, that I am familiar with the conditions which presently exist; that the statements made in this plan are to the best of my knowledge, true and correct; and, that the work associated with the operations proposed herein will be performed by Yates Petroleum Company and its contractors and subcontractors in conformity with this plan and the terms and conditions under which it is approved.

3-3-80

Date


Gliserio Rodriguez, Geographer