

NO. OF COPIES RECEIVED	
DISTRIBUTION	
SANTA FE	1
FILE	1 ✓
U.S.G.S.	2
LAND OFFICE	1
OPERATOR	1

# NEW MEXICO OIL CONSERVATION COMMISSION

RECEIVED

APR 2 1980

O. C. D.

ARTESIA, OFFICE

30-005-60689  
Form C-101  
Revised 1-1-65

5A. Indicate Type of Lease	
STATE <input checked="" type="checkbox"/>	FEE <input type="checkbox"/>
5. State Oil & Gas Lease No.	
L-4606	

## APPLICATION FOR PERMIT TO DRILL, DEEPEN, OR PLUG BACK

1a. Type of Work		7. Unit Agreement Name	
b. Type of Well DRILL <input checked="" type="checkbox"/> DEEPEN <input type="checkbox"/> PLUG BACK <input type="checkbox"/> OIL WELL <input type="checkbox"/> GAS WELL <input checked="" type="checkbox"/> OTHER <input type="checkbox"/> SINGLE ZONE <input checked="" type="checkbox"/> MULTIPLE ZONE <input type="checkbox"/>		8. Farm or Lease Name state Co Sink Hole "NR" com-st.	
2. Name of Operator Yates Petroleum Corporation		9. Well No. 1	
3. Address of Operator 207 South 4th Street, Artesia, New Mexico 88210		10. Field and Pool, or Wildcat X Wildcat Abo	
4. Location of Well UNIT LETTER G LOCATED 1980 FEET FROM THE North LINE AND 1980 FEET FROM THE East LINE OF SEC. 8 TWP. 10S RGE. 26E NMPM		12. County Chaves	
19. Proposed Depth 5200'		19A. Formation Abo	20. Rotary or C.T. Rotary
21. Elevations (Show whether DF, RT, etc.) 3800 GL	21A. Kind & Status Plug. Bond Blanket	21B. Drilling Contractor LaRue Drilling Co.	22. Approx. Date Work will start April 5, 1980

23.

### PROPOSED CASING AND CEMENT PROGRAM

SIZE OF HOLE	SIZE OF CASING	WEIGHT PER FOOT	SETTING DEPTH	SACKS OF CEMENT	EST. TOP
16	12 3/4	48#	approx. 80	Ready mix	Circulate
12 1/2	8 5/8	24#	approx. 840	350	circulate
7 7/8	5 1/2 or 4 1/2	14# or 9.5#	approx. 5200'	450	

Propose to drill and test the Abo and intermediate formations. Approx. 80' of conductor pipe will be set w/ready mix to surface and approx. 840' of 8 5/8" csg will be set into top of the San Andres and cemented to surface. If commercial, will run 5 1/2" or 4 1/2" casing with 600' cement covering the pay.

MUD PROGRAM: Gel and LCM to TD w/minimum fluid loss control

BOP CONTROL: BOP's will be installed on the 8 5/8" csg and tested.

GAS NOT DEDICATED.

APPROVAL VAWD  
FOR 90 DAYS UNLESS  
DRILLING COMMENCED,

EXPIRES 7-3-80

IN ABOVE SPACE DESCRIBE PROPOSED PROGRAM: IF PROPOSAL IS TO DEEPEN OR PLUG BACK, GIVE DATA ON PRESENT PRODUCTIVE ZONE AND PROPOSED NEW PRODUCTIVE ZONE. GIVE BLOWOUT PREVENTER PROGRAM, IF ANY.

I hereby certify that the information above is true and complete to the best of my knowledge and belief.

Signed Glenn Rodriguez Title Engineer Date 4/1/80  
(This space for State Use)

APPROVED BY W. A. Gracett TITLE SUPERVISOR, DISTRICT II DATE APR 3 1980  
CONDITIONS OF APPROVAL, IF ANY:

NEW MEXICO OIL CONSERVATION COMMISSION  
WELL LOCATION AND ACREAGE DEDICATION PLAT

Form C-102  
Supersedes C-128  
Effective 1-1-65

All distances must be from the outer boundaries of the Section.

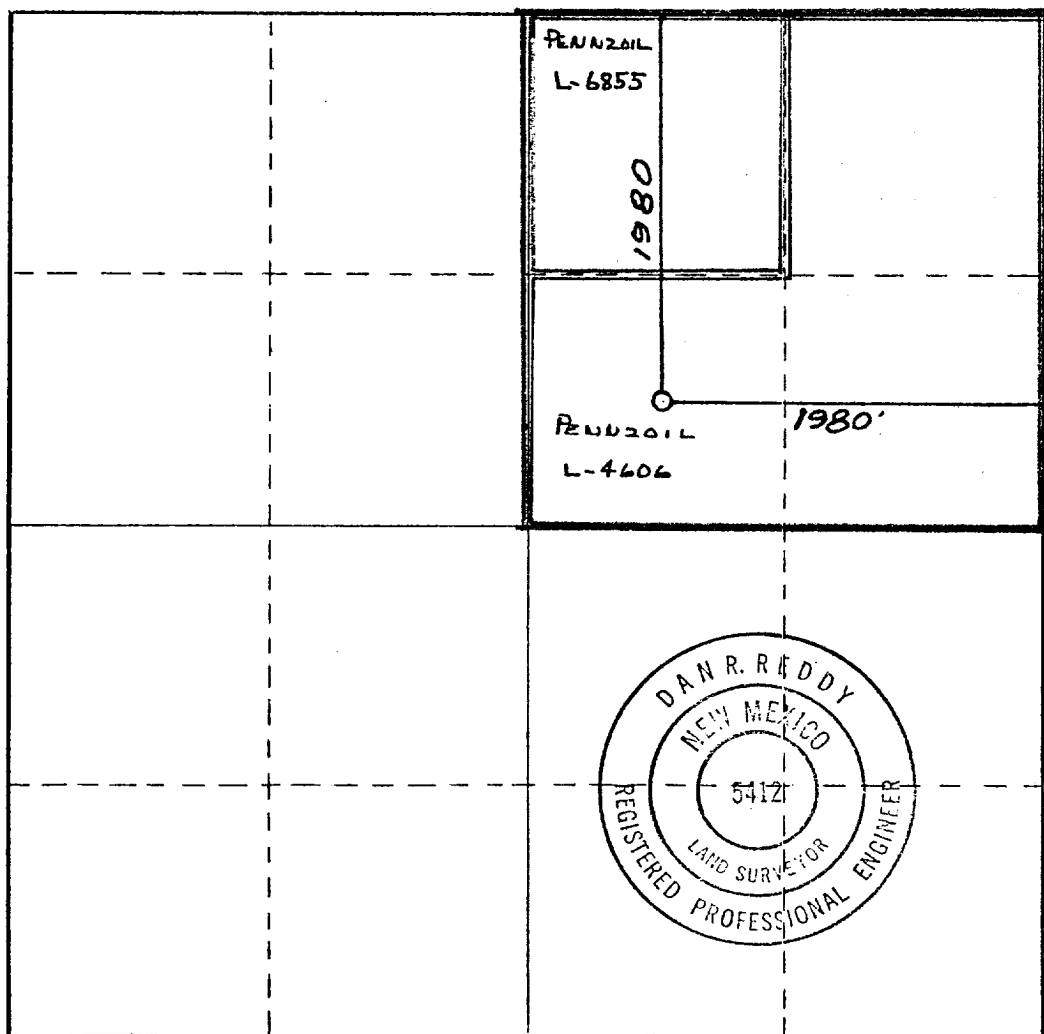
Operator <b>YATES PETROLEUM CORPORATION</b>			Lease <b>Sink Hole "NR" STATE Com</b>		Well No. <b>1</b>
Unit Letter <b>G</b>	Section <b>8</b>	Township <b>10 South</b>	Range <b>26 East</b>	County <b>Chaves</b>	
Actual Footage Location of Well: <b>1980</b> feet from the <b>North</b> line and <b>1980</b> feet from the <b>East</b> line					
Ground Level Elev. <b>3800'</b>	Producing Formation <b>ABO</b>	Pool <b>WILDCAT</b>		Dedicated Acreage: <b>160</b> Acres	

1. Outline the acreage dedicated to the subject well by colored pencil or machine marks on the plat below.
2. If more than one lease is dedicated to the well, outline each and identify the ownership thereof (both as to working interest and royalty).
3. If more than one lease of different ownership is dedicated to the well, have the interests of all owners been consolidated by communitization, unitization, force-pooling, etc?

☒ Yes ☐ No If answer is "yes," type of consolidation COMMUNITIZATION

If answer is "no," list the owners and tract descriptions which have actually been consolidated. (Use reverse side of this form if necessary.)

No allowable will be assigned to the well until all interests have been consolidated (by communitization, unitization, forced-pooling, or otherwise) or until a non-standard unit, eliminating such interests, has been approved by the Commission.



CERTIFICATION

I hereby certify that the information contained herein is true and complete to the best of my knowledge and belief.

*Gliserio Rodriguez*  
Name

*GLISERIO RODRIGUEZ*  
Position

*GEOGRAPHER*

Company  
*YATES PETROLEUM CORP*

Date  
*4-2-80*

I hereby certify that the well location shown on this plat was plotted from field notes of actual surveys made by me or under my supervision, and that the same is true and correct to the best of my knowledge and belief.

Date Surveyed

*April 2, 1980*

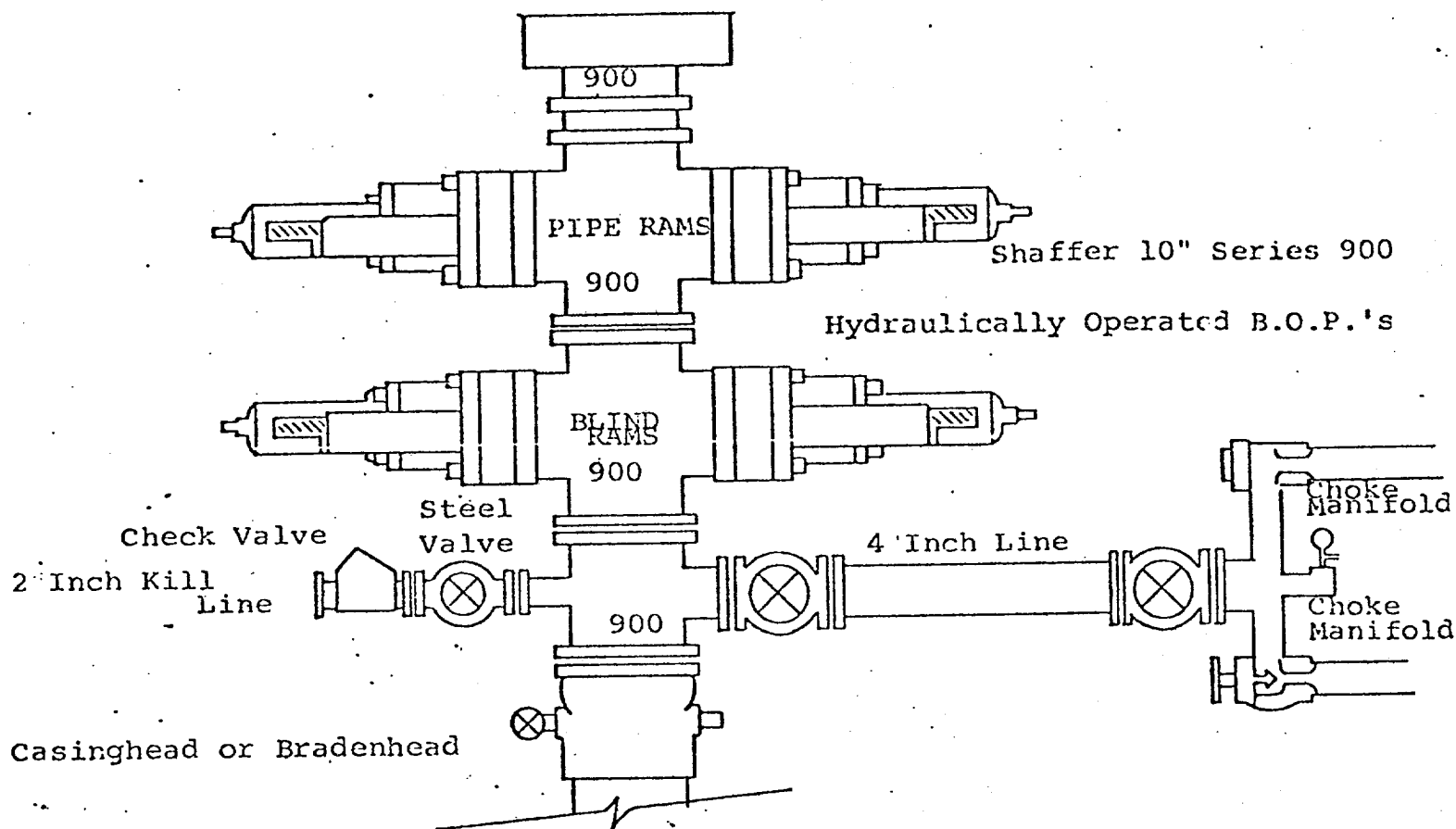
Registered Professional Engineer and/or Land Surveyor

*Dan R. Reddy*  
Certificate No.

*NM PE&LS #5412*

0 330 660 990 1320 1650 1980 2310 2640 2970 3300 3630 3960 4290 4620 4950 5280 5610 5940 6270 6600

# EXHIBIT B



## THE FOLLOWING CONSTITUTE MINIMUM BLOWOUT PREVENTER REQUIREMENTS

1. All preventers to be hydraulically operated with secondary manual controls installed prior to drilling out from under casing.
2. Choke outlet to be a minimum of 4" diameter.
3. Kill line to be of all steel construction of 2" minimum diameter.
4. All connections from operating manifolds to preventers to be all steel. hole or tube a minimum of one inch in diameter.
5. The available closing pressure shall be at least 15% in excess of that required with sufficient volume to operate the B.O.P.'s.
6. All connections to and from preventer to have a pressure rating equivalent to that of the B.O.P.'s.
7. Inside blowout preventer to be available on rig floor.
8. Operating controls located a safe distance from the rig floor.
9. Hole must be kept filled on trips below intermediate casing. Operator not responsible for blowouts resulting from not keeping hole full.
10. D. P. float must be installed and used below zone of first gas intrusion.