

DISTRICT I  
1625 N. French Dr., Hobbs, NM 88240

State of New Mexico  
Energy, Minerals and Natural Resources Department

Form C-101  
Revised March 17, 1999  
Instructions on back

DISTRICT II  
811 South First, Artesia, NM 88210

OIL CONSERVATION DIVISION

PO BOX 2088  
Santa Fe, NM 87504-2088

Submit to appropriate District Office

State Lease - 6 Copies  
Fee Lease - 5 Copies

DISTRICT III  
1000 Rio Brazos Rd., Aztec, NM 87410

DISTRICT IV  
2040 South Pacheco, Santa Fe, NM 87501

☐ AMENDED REPORT

APPLICATION FOR PERMIT TO DRILL, RE-ENTER, DEEPEN, PLUGBACK, OR ADD A ZONE

<sup>1</sup> Operator Name and Address Yates Petroleum Corporation 105 South Fourth Street Artesia, New Mexico 88210		<sup>2</sup> OGRID Number 025575
		<sup>3</sup> API Number 30- 30-005-60689
<sup>4</sup> Property Code 26888	<sup>5</sup> Property Name Hook AWX State	<sup>6</sup> Well No. 1

<sup>7</sup> Surface Location

UL or lot no.	Section	Township	Range	Lot Idn	Feet from the	North/South Line	Feet from the	East/West Line	County
G	8	10S	26E		1980'	North	1980'	East	Chaves

<sup>8</sup> Proposed Bottom Hole Location If Different From Surface

UL or lot no.	Section	Township	Range	Lot Idn	Feet from the	North/South Line	Feet from the	East/West Line	County
<sup>9</sup> Proposed Pool 1 <del>Basement</del> WC; Ordovician					<sup>10</sup> Proposed Pool 2				

<sup>11</sup> Work Type Code E	<sup>12</sup> Well Type Code G	<sup>13</sup> Cable/Rotary R	<sup>14</sup> Lease Type Code S	<sup>15</sup> Ground Level Elevation 3800'
<sup>16</sup> Multiple N	<sup>17</sup> Proposed Depth 6195'	<sup>18</sup> Formation Basement	<sup>19</sup> Contractor Not Determined	<sup>20</sup> Spud Date ASAP

<sup>21</sup> Proposed Casing and Cement Program

Hole Size	Casing Size	Casing weight/feet	Setting Depth	Sacks of Cement	Estimated TOC
12 1/4"	8 5/8"	24#	926'	600 sx	In Place
7 7/8"	5 1/2"	15.5#	6195'	500 sx	TOC 4000'
Cement to	cover all oil,	gas, and water	bearing zones.		

<sup>22</sup> Describe the proposed program. If this application is to DEEPEN or PLUG BACK give the data on the present production zone and proposed new production zone.  
Describe the blowout prevention program, if any. Use additional sheets if necessary.

SEE ATTACHED PAGE 2.



<sup>23</sup> I hereby certify that the information given above is true and complete to the best of my knowledge and belief. Signature: <i>Cy Cowan</i>		OIL CONSERVATION DIVISION	
Printed name: Cy Cowan		Approved by: <b>ORIGINAL SIGNED BY TIM W. GUM BSC</b>	
Title: Regulatory Agent		Title: <b>DISTRICT II SUPERVISOR</b>	
Date: 11/09/00		Approval Date: <b>NOV 15 2000</b> Expiration Date: <b>NOV 15 2001</b>	
Phone: (505) 748-1471		Conditions of Approval Attached <input type="checkbox"/>	

# **YATES PETROLEUM CORPORATION**

Hook AWX State #1

(Formerly the Sink Hole NR State Com. #1)

Drilling Prognosis

Page 2

This well was originally drilled by Yates Petroleum Corporation as the Sink Hole NR State #1. This well was spudded on May 5, 1980 and was Plugged and abandoned August 21, 1980.

Yates Petroleum Corporation proposes to re-enter this well which was drilled to a TD of 5220'. A drilling rig will be used to drill out the cement plugs and clean out the well to the 5 1/2" casing stub at 3325'. A sidetrack plug will be set from 3100' to 3325'. The casing will be sidetracked with a 7 7/8" bit and the well will then be deepened from 3100' to 6195'. (Please note: this well will be drilled vertically from top to bottom). 5 1/2" casing will be run and cemented back to 4400'. Completion attempts will be made in the Wolfcamp, Penn and Ordovician formations.

MUD PROGRAM: 0-3100' Cut Brine/Salt Gel (Weight: 9.4-10, Vis: 28-40).  
3100'-TD Starch/Salt Gel (Weight: 9.3-10.2, Vis 32-40).

BOPE PROGRAM: 2000 # BOPE will be nipped up on 8 5/8 in casing.

District I

1625 N. French Dr., Hobbs, NM 88240

District II

811 South First, Artesia, NM 88210

District III

1000 Rio Brazos Rd., Aztec, NM 87410

District IV

2040 South Pacheco, Santa Fe, NM 87505

State of New Mexico  
Energy, Minerals & Natural ResourcesOIL CONSERVATION DIVISION  
2040 South Pacheco  
Santa Fe, NM 87505Form C-102  
Revised March 17, 1999Submit to Appropriate District Office  
State Lease - 4 Copies  
Fee Lease - 3 Copies☐ AMENDED REPORT

## WELL LOCATION AND ACREAGE DEDICATION PLAT

'API Number		'Pool Code		'Pool Name Wildcat Basement	
'Property Code		'Property Name Hook AWX State			'Well Number 1
'OGRID No. 025575		'Operator Name YATES PETROLEUM CORPORATION			'Elevation 3800'

<sup>10</sup> Surface Location

UL or lot no.	Section	Township	Range	Lot Idn	Feet from the	North/South line	Feet from the	East/West line	County
G	8	10S	26E		1980'	North	1980'	East	Chaves

<sup>11</sup> Bottom Hole Location if Different From Surface

UL or lot no.	Section	Township	Range	Lot Idn	Feet from the	North/South line	Feet from the	East/West line	County

<sup>12</sup> Dedicated Acres 320	<sup>13</sup> Joint or Infill	<sup>14</sup> Consolidation Code	<sup>15</sup> Order No.
--------------------------------------	-------------------------------	----------------------------------	-------------------------

NO ALLOWABLE WILL BE ASSIGNED TO THIS COMPLETION UNTIL ALL INTERESTS HAVE BEEN CONSOLIDATED OR A NON-STANDARD UNIT HAS BEEN APPROVED BY THE DIVISION

<sup>16</sup>	<sup>17</sup> OPERATOR CERTIFICATION I hereby certify that the information contained herein is true and complete to the best of my knowledge and belief  Signature Cy Cowan Printed Name Regulatory Agent Title November 9, 2000 Date
	<sup>18</sup> SURVEYOR CERTIFICATION I hereby certify that the well location shown on this plat was plotted from field notes of actual surveys made by me or under my supervision, and that the same is true and correct to the best of my belief. Date of Survey Signature and Seal of Professional Surveyor: REFER TO ROIGINAL PLAT Certificate Number

**NEW MEXICO OIL CONSERVATION COMMISSION**  
**WEI LOCATION AND ACREAGE DEDICATION PLAT**

Form C-102  
 Supersedes C-128  
 Effective 1-1-65

All distances must be from the outer boundaries of the Section.

Operator <b>YATES PETROLEUM CORPORATION</b>			Lease <b>Sink Hole NR STATE Com</b>		Well No. <b>1</b>
Unit Letter <b>G</b>	Section <b>8</b>	Township <b>10 South</b>	Range <b>26 East</b>	County <b>Chaves</b>	
Actual Footage Location of Well: <b>1980</b> feet from the <b>North</b> line and <b>1980</b> feet from the <b>East</b> line					
Ground Level Elev. <b>3800'</b>	Producing Formation <b>ABO</b>		Pool <b>WILDCAT</b>		Dedicated Acreage: <b>160</b> Acres

1. Outline the acreage dedicated to the subject well by colored pencil or ~~hachure~~ marks on the plat below.
2. If more than one lease is dedicated to the well, outline each and identify the ownership thereof (both as to working interest and royalty).
3. If more than one lease of different ownership is dedicated to the well, have the interests of all owners been consolidated by communitization, unitization, force-pooling, etc?

RECEIVED

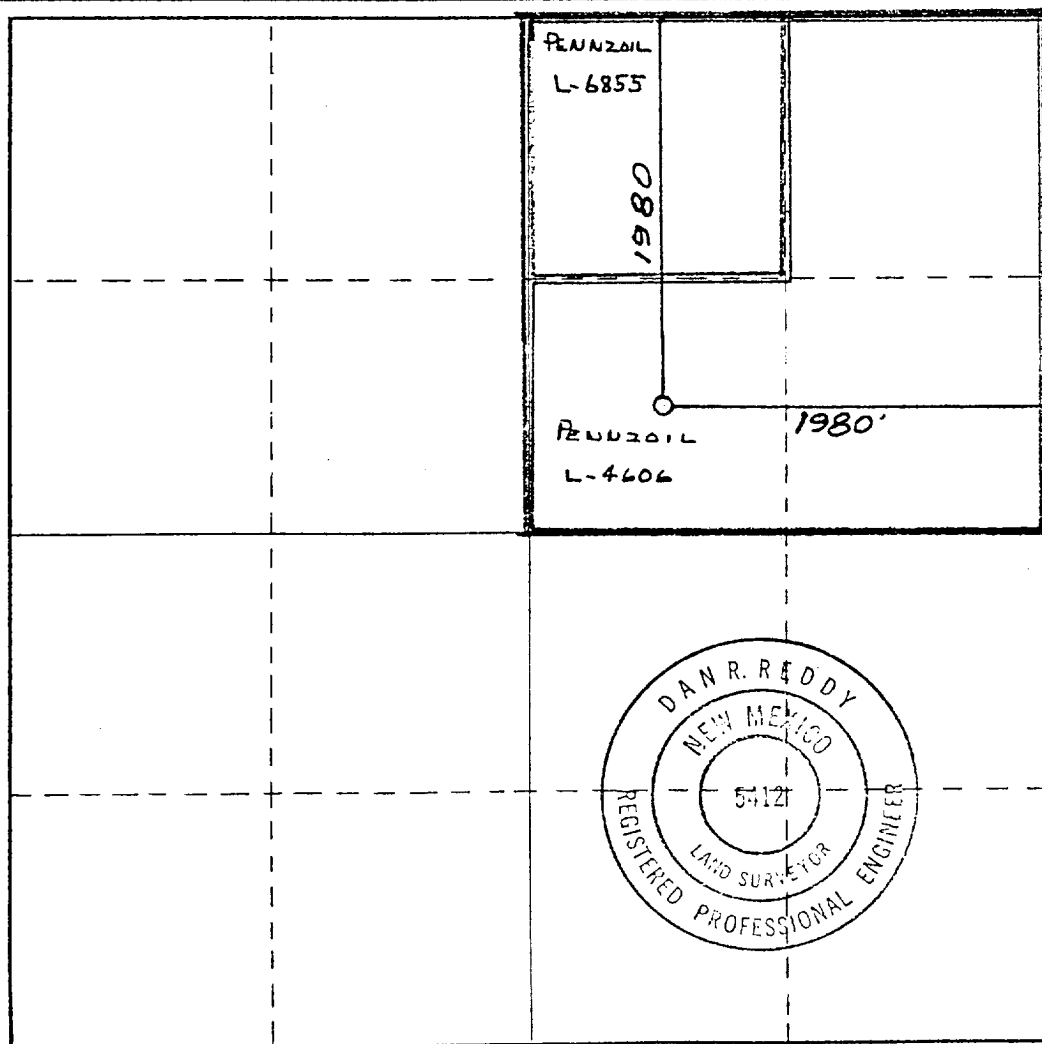
APR 2 1980

ARTESIA, OFFICE

☒ Yes    ☐ No    If answer is "yes," type of consolidation COMMUNITIZATION

If answer is "no," list the owners and tract descriptions which have actually been consolidated. (Use reverse side of this form if necessary.) \_\_\_\_\_

No allowable will be assigned to the well until all interests have been consolidated (by communitization, unitization, forced-pooling, or otherwise) or until a non-standard unit, eliminating such interests, has been approved by the Commission.



**CERTIFICATION**

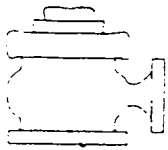
I hereby certify that the information contained herein is true and complete to the best of my knowledge and belief.

Glisario Rodriguez  
 Name  
GLISARIO RODRIGUEZ  
 Position  
GEOGRAPHER  
 Company  
YATES PETROLEUM CORP  
 Date  
4-2-80

I hereby certify that the well location shown on this plat was plotted from field notes of actual surveys made by me or under my supervision, and that the same is true and correct to the best of my knowledge and belief.

Date Surveyed  
April 2, 1980  
 Registered Professional Engineer  
 and/or Land Surveyor

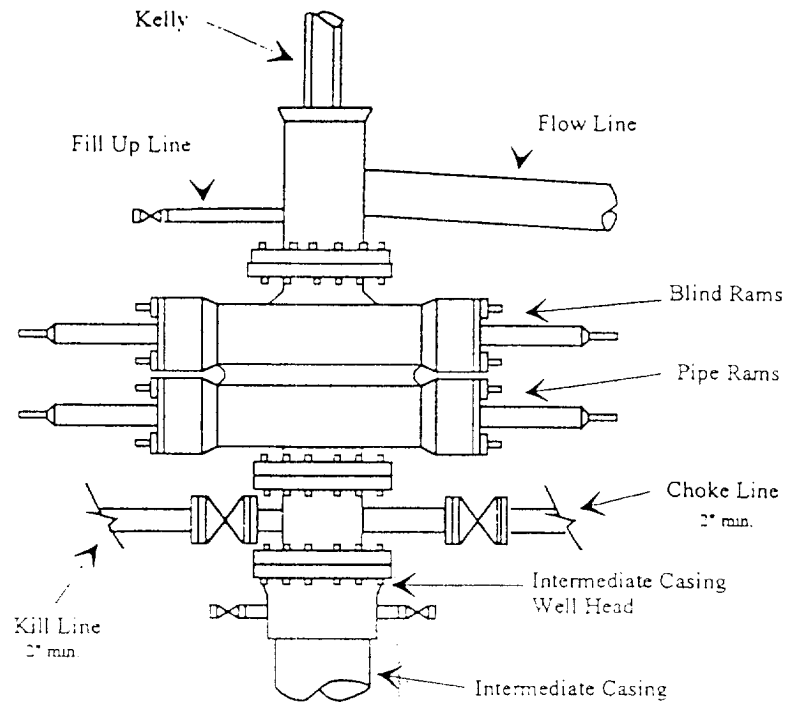
Dan R. Reddy  
 Certificate No.  
NM PE&LS #5412



# Yates Petroleum Corporation

BOP-2

## Typical 2,000 psi Pressure System Schematic Double Ram Preventer Stack



Typical 2,000 psi choke manifold assembly with at least these minimum features

