

**NEW MEXICO OIL CONSERVATION COMMISSION
WELL LOCATION AND ACREAGE DEDICATION PLAT**

Form C-102
Supersedes C-128
Effective 1-1-65

All distances must be from the outer boundaries of the Section.

Operator Coronado Exploration Corp.			Lease Mable		Well No. 1
Unit Letter A	Section 30	Township 10 South	Range 28 East	County Chaves	
Actual Footage Location of Well: 660 feet from the North line and 660 feet from the East line					
Ground Level Elev. 3744.0 Gr	Producing Formation San Andres		Pool Und Wildcat LE Ranch - SA		Dedicated Acreage: 40 Acres

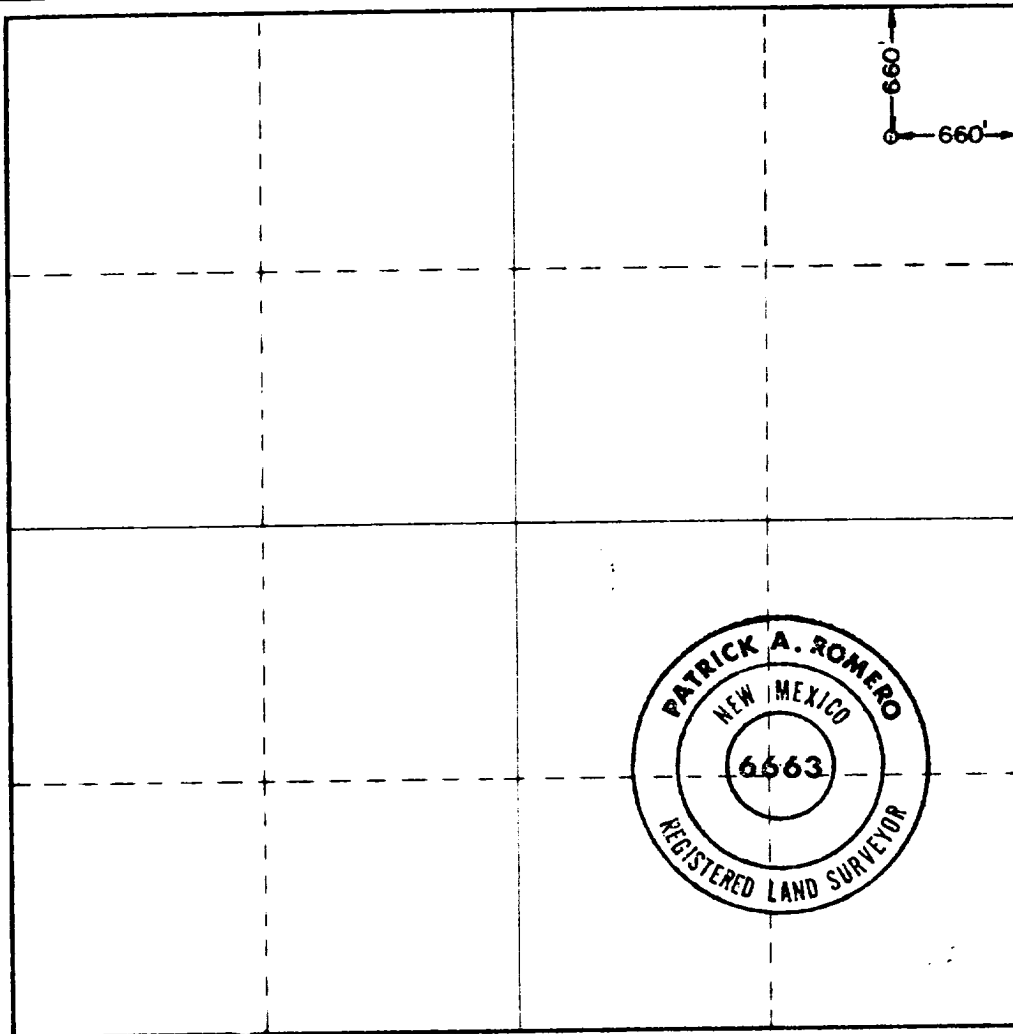
1. Outline the acreage dedicated to the subject well by colored pencil or hatchure marks on the plat below.
2. If more than one lease is dedicated to the well, outline each and identify the ownership thereof (both as to working interest and royalty).
3. If more than one lease of different ownership is dedicated to the well, have the interests of all owners been consolidated by communitization, unitization, force-pooling, etc?

RECEIVED
APR 28 1980
O. C. D.
ARTESIA, OFFICE

☐ Yes ☒ No If answer is "yes," type of consolidation _____

If answer is "no," list the owners and tract descriptions which have actually been consolidated. (Use reverse side of this form if necessary.) All leases held by operator and participating parties

No allowable will be assigned to the well until all interests have been consolidated (by communitization, unitization, forced-pooling, or otherwise) or until a non-standard unit, eliminating such interests, has been approved by the Commission.



CERTIFICATION

I hereby certify that the information contained herein is true and complete to the best of my knowledge and belief.

PL

Name **Phelps White**
Position **Engineer**
Company **Coronado Exploration Corp.**
Date **April 28, 1980**

I hereby certify that the well location shown on this plat was plotted from field notes of actual surveys made by me or under my supervision, and that the same is true and correct to the best of my knowledge and belief.

Date Surveyed **April 25, 1980**
Registered Professional Engineer and/or Land Surveyor
Patrick A. Romero
Certificate No. **JOHN W. WEST 678**
PATRICK A. ROMERO 6563
Ronald J. Eidson 3239

330 660 990 1320 1650 1980 2310 2640 2970 3300 3630 3960